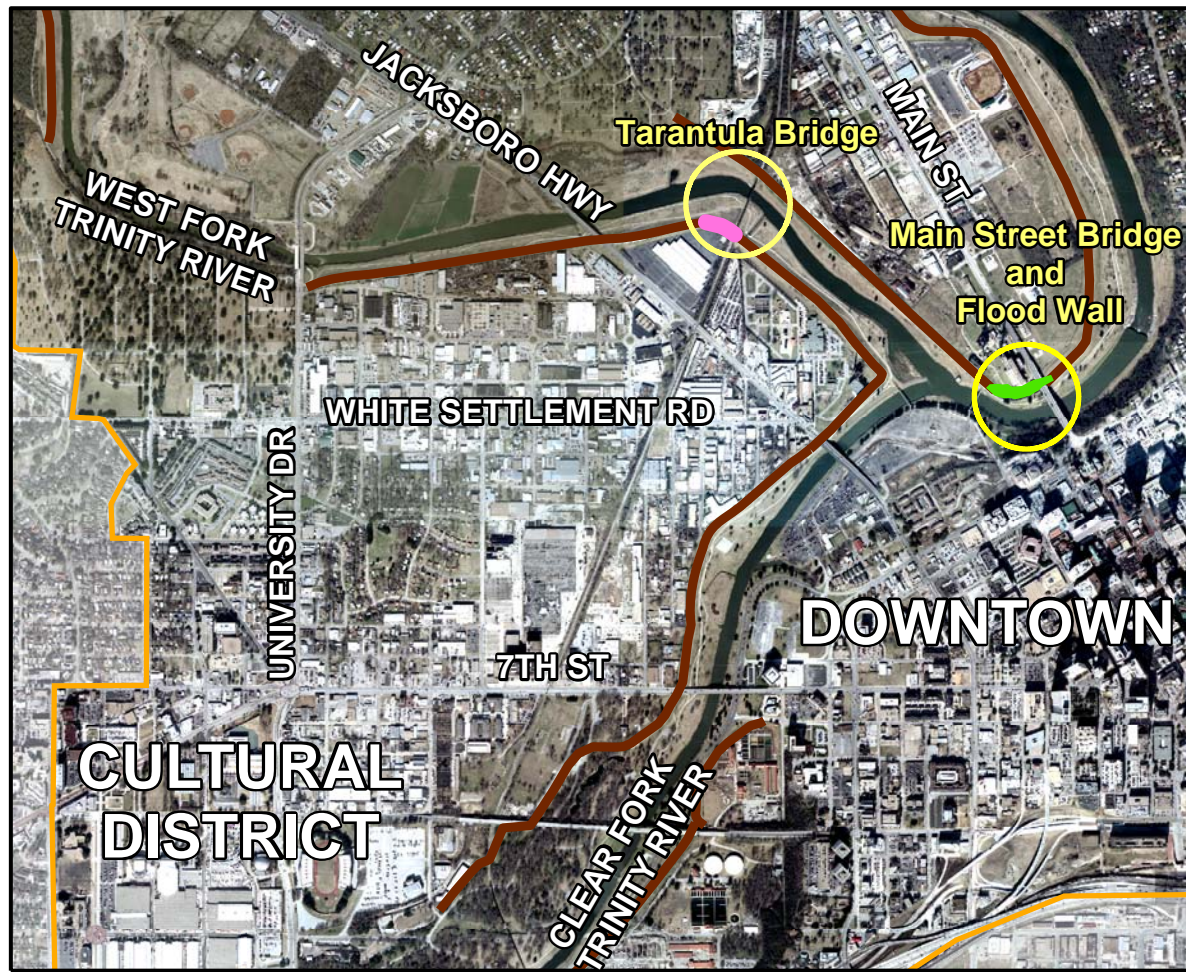
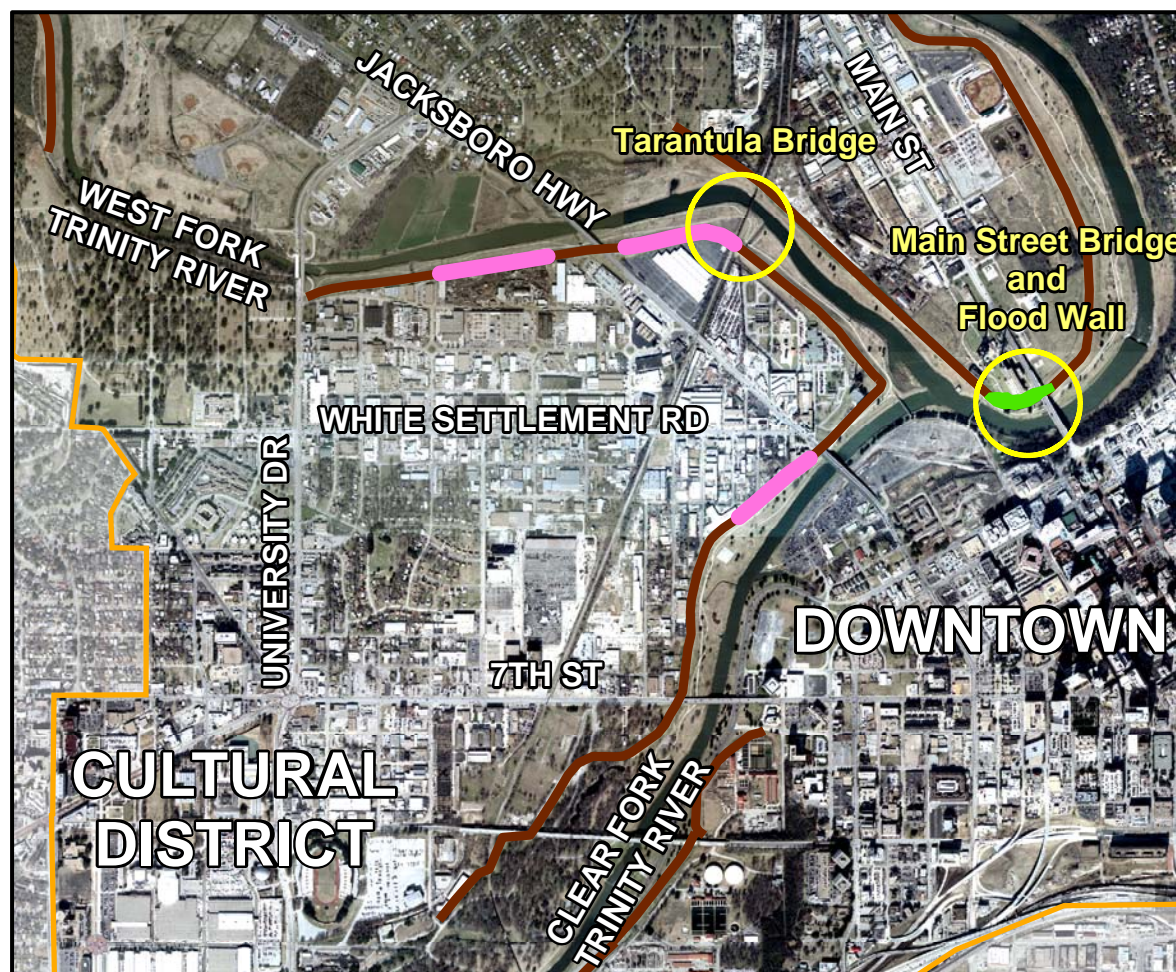


Central City

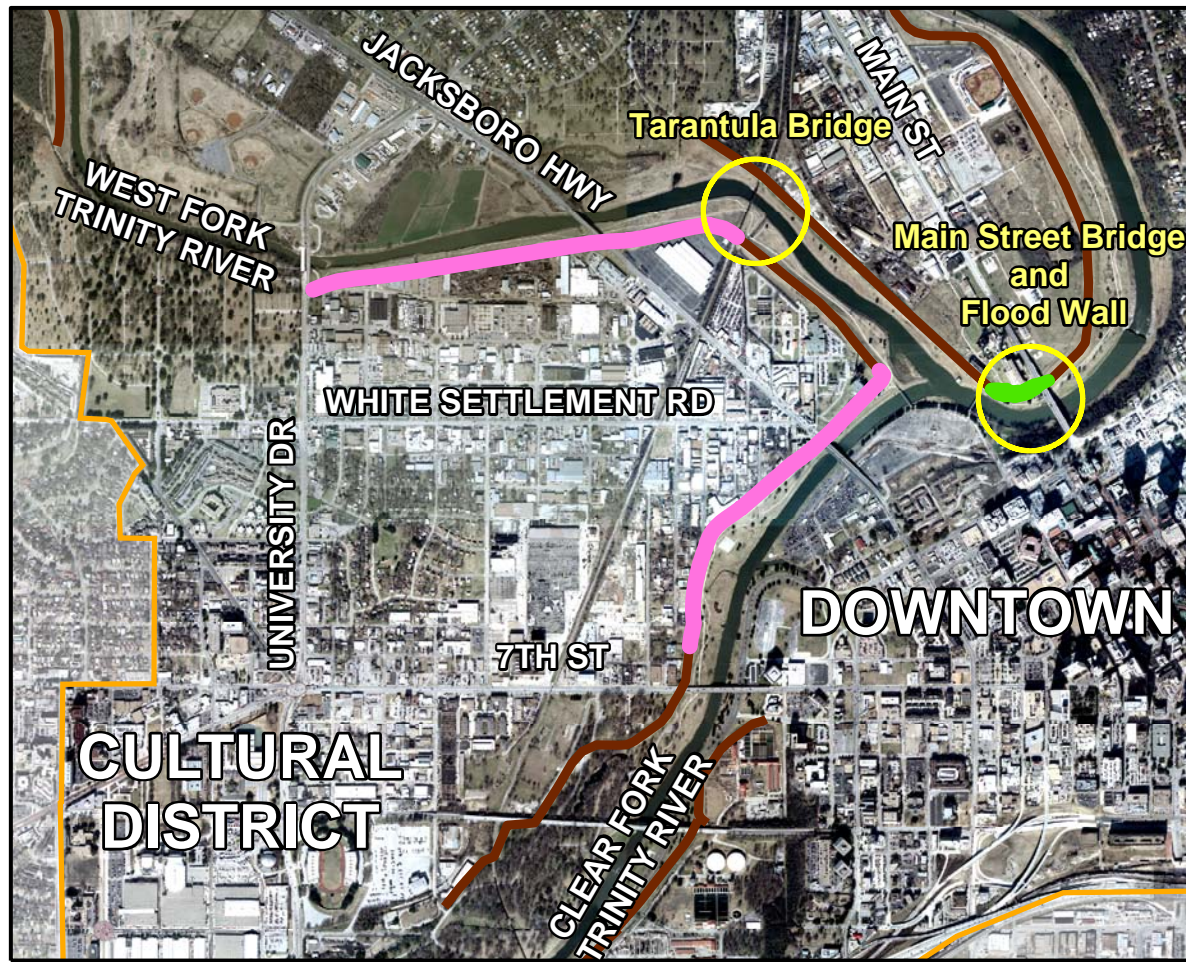
Figure 3 - 5. Measures Analyzed by the P&G Based Alternative for Bringing Cultural District and North Main Levees to Specified Level of Protection



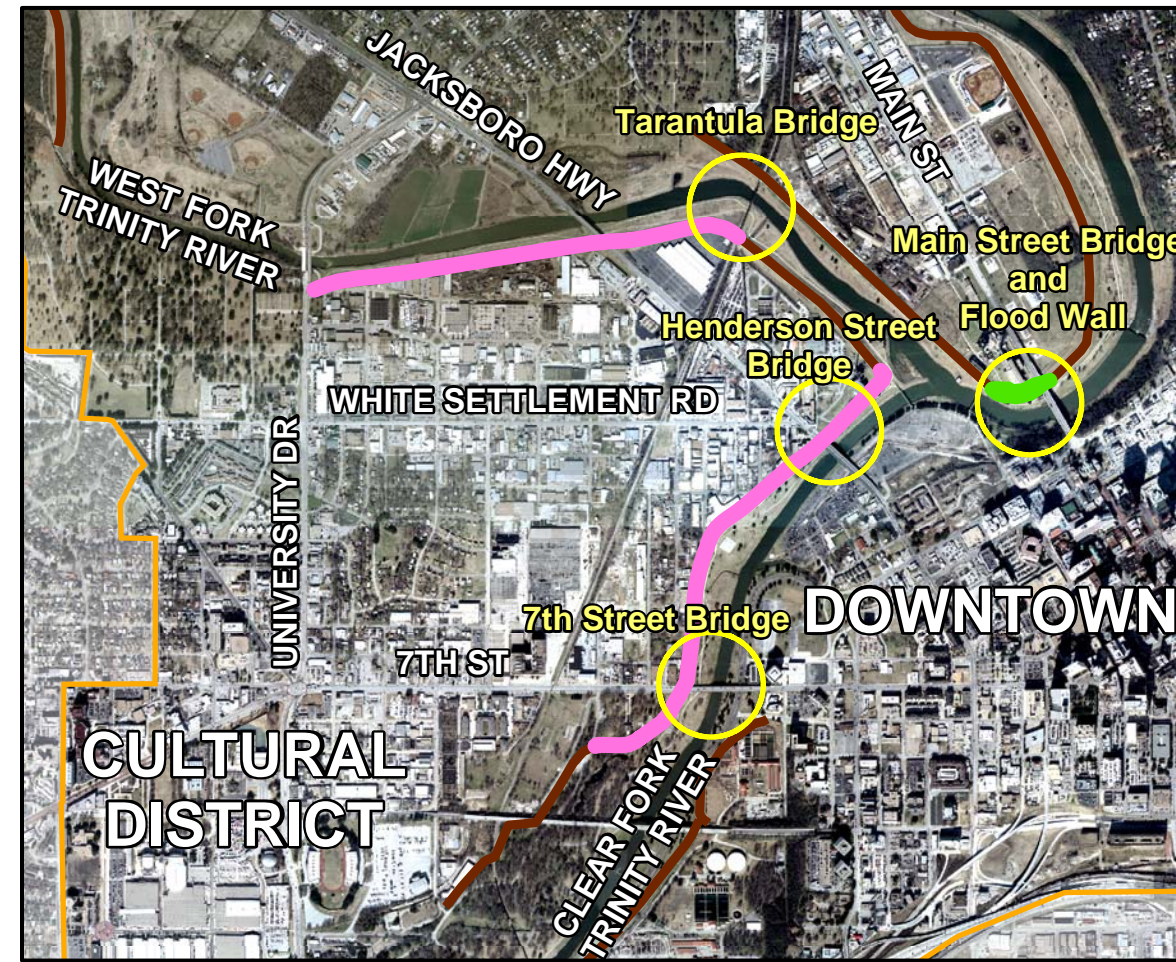
SPF +0



SPF +1









SPF +2




SPF +4

Legend

-  Existing Levee
-  Proposed Levee Modification
-  New Levee
-  Study Area

Aerial Photography Date: January 2003



US Army Corps of Engineers
Fort Worth District

ATTENTION

This product is reproduced from geospatial information prepared by the U.S. Army Corps of Engineers. GIS data and product accuracy may vary. They may be: developed from sources of differing accuracy, accurate only at certain scales, based on modeling or interpretation, incomplete while being created or revised, etc... Using GIS products for purposes other than those for which they were created may yield inaccurate or misleading results. The Corps of Engineers reserves the right to correct, update, modify, or replace GIS products without notification. For more information contact the Fort Worth District Planning office.

5/2/2005 at 10:44:29 PM