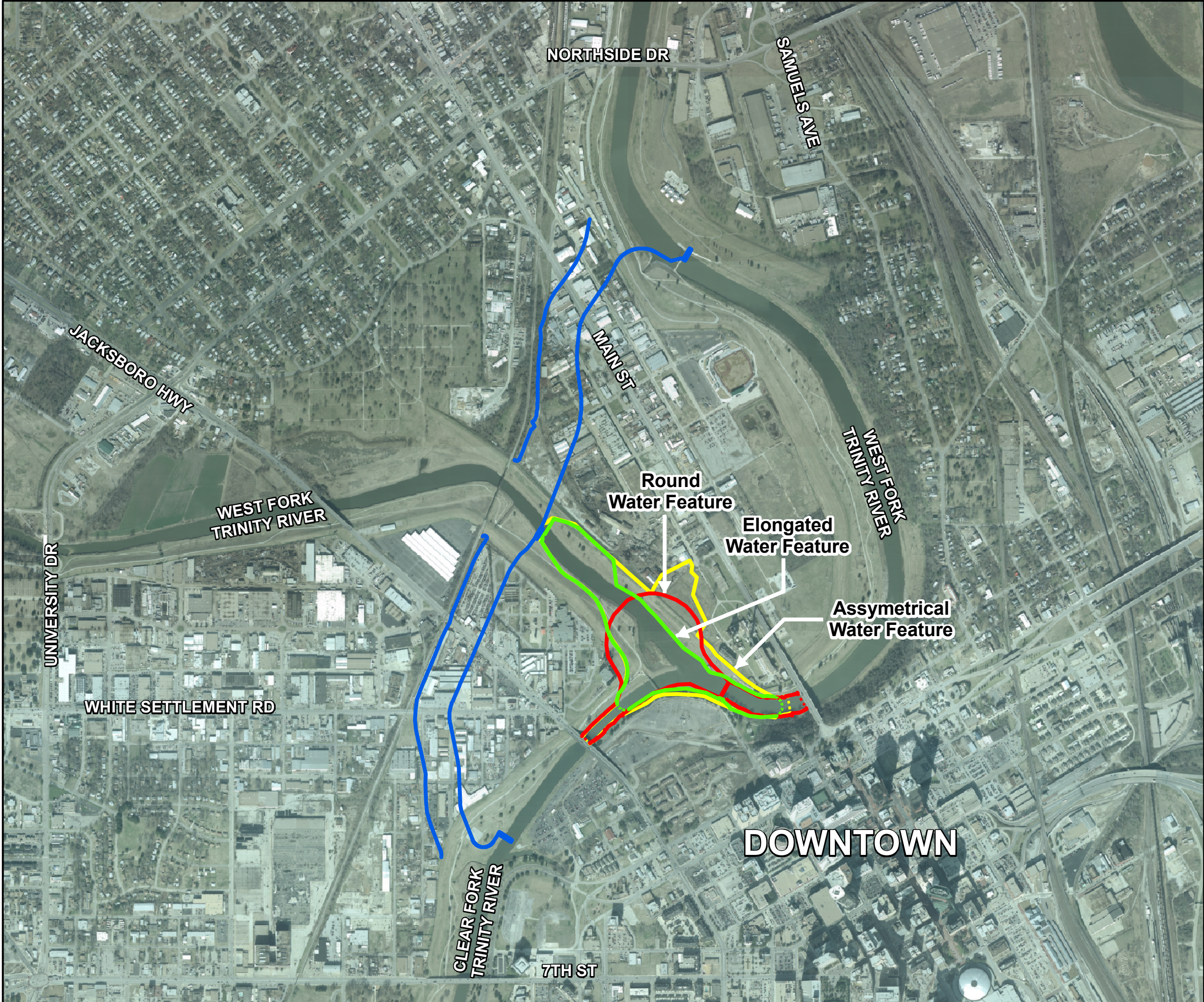
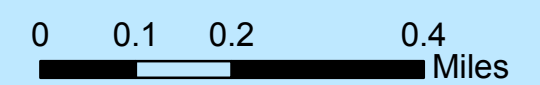
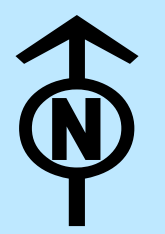


Central City
Figure 3-14. Configurations Considered for Interior Water Feature



Legend

- Bypass Channel
- Round Water Feature
- Assymetrical Water Feature
- Elongated Water Feature



Aerial Photography Date: January 2003



ATTENTION
 This product is reproduced from geospatial information prepared by the U.S. Army Corps of Engineers. GIS data and product accuracy may vary. They may be developed from sources of differing accuracy, accurate only at certain scales, based on modeling or interpretation, incomplete while being created or revised, etc... Using GIS products for purposes other than those for which they were created may yield inaccurate or misleading results. The Corps of Engineers reserves the right to correct, update, modify, or replace GIS products without notification. For more information contact the Fort Worth District Planning office.