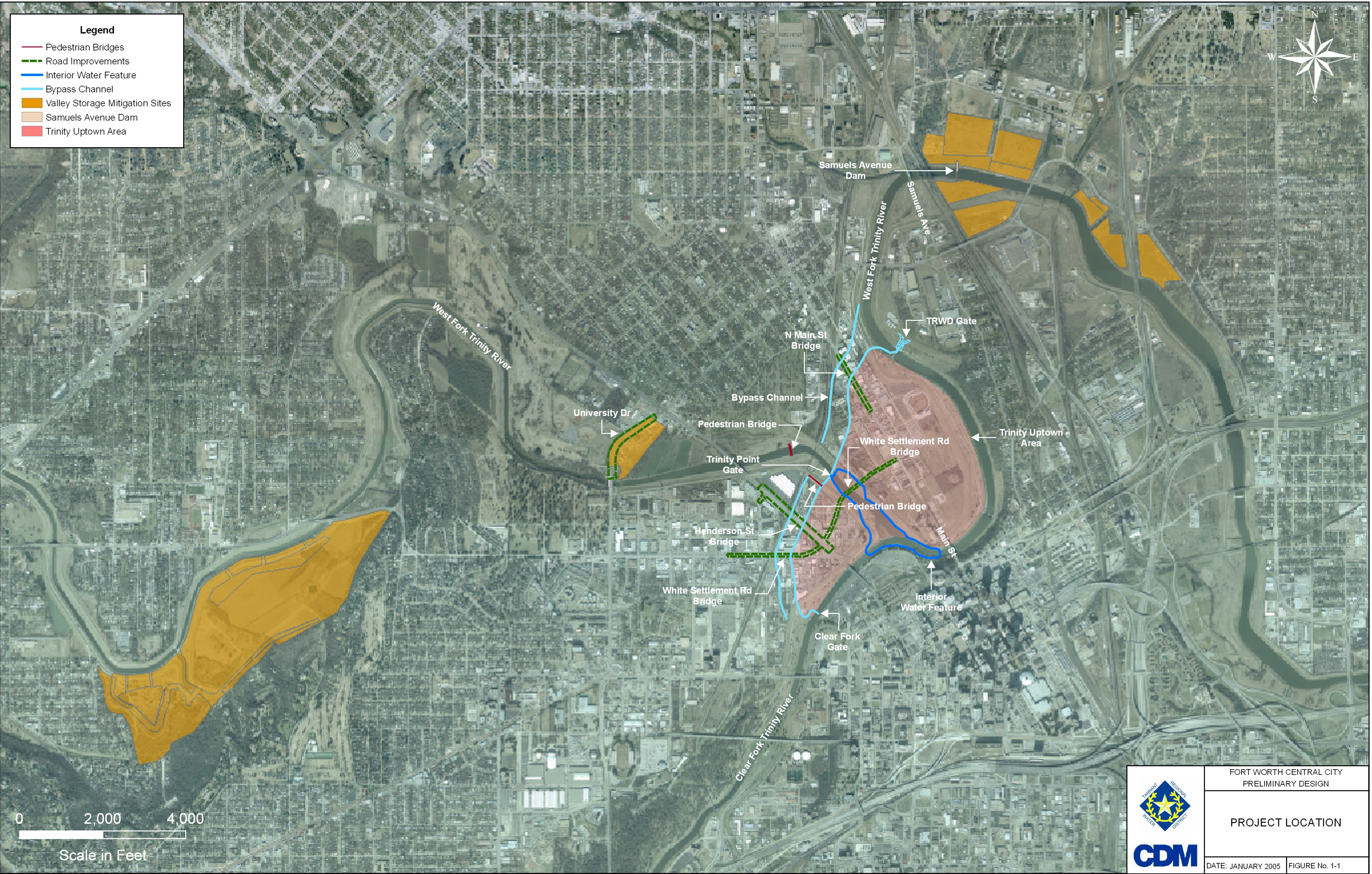


Legend

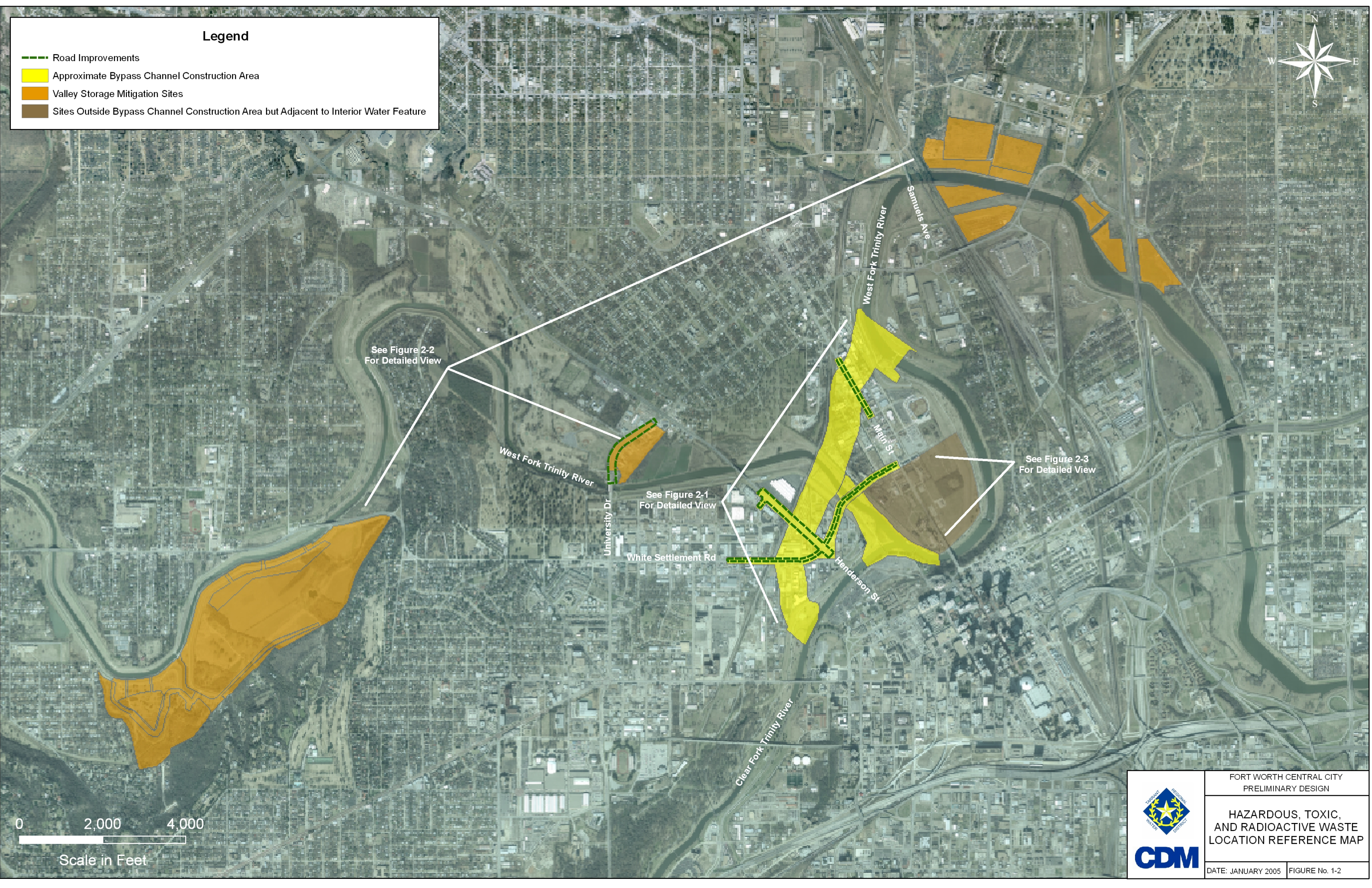
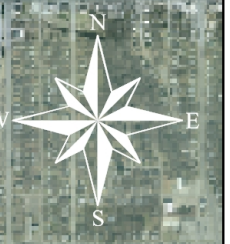
- Pedestrian Bridges
- Road Improvements
- Interior Water Feature
- Bypass Channel
- Valley Storage Mitigation Sites
- Samuels Avenue Dam
- Trinity Uptown Area



	FORT WORTH CENTRAL CITY PRELIMINARY DESIGN	
	PROJECT LOCATION	
	DATE: JANUARY 2005	FIGURE No. 1-1

Legend

- Road Improvements
- Approximate Bypass Channel Construction Area
- Valley Storage Mitigation Sites
- Sites Outside Bypass Channel Construction Area but Adjacent to Interior Water Feature









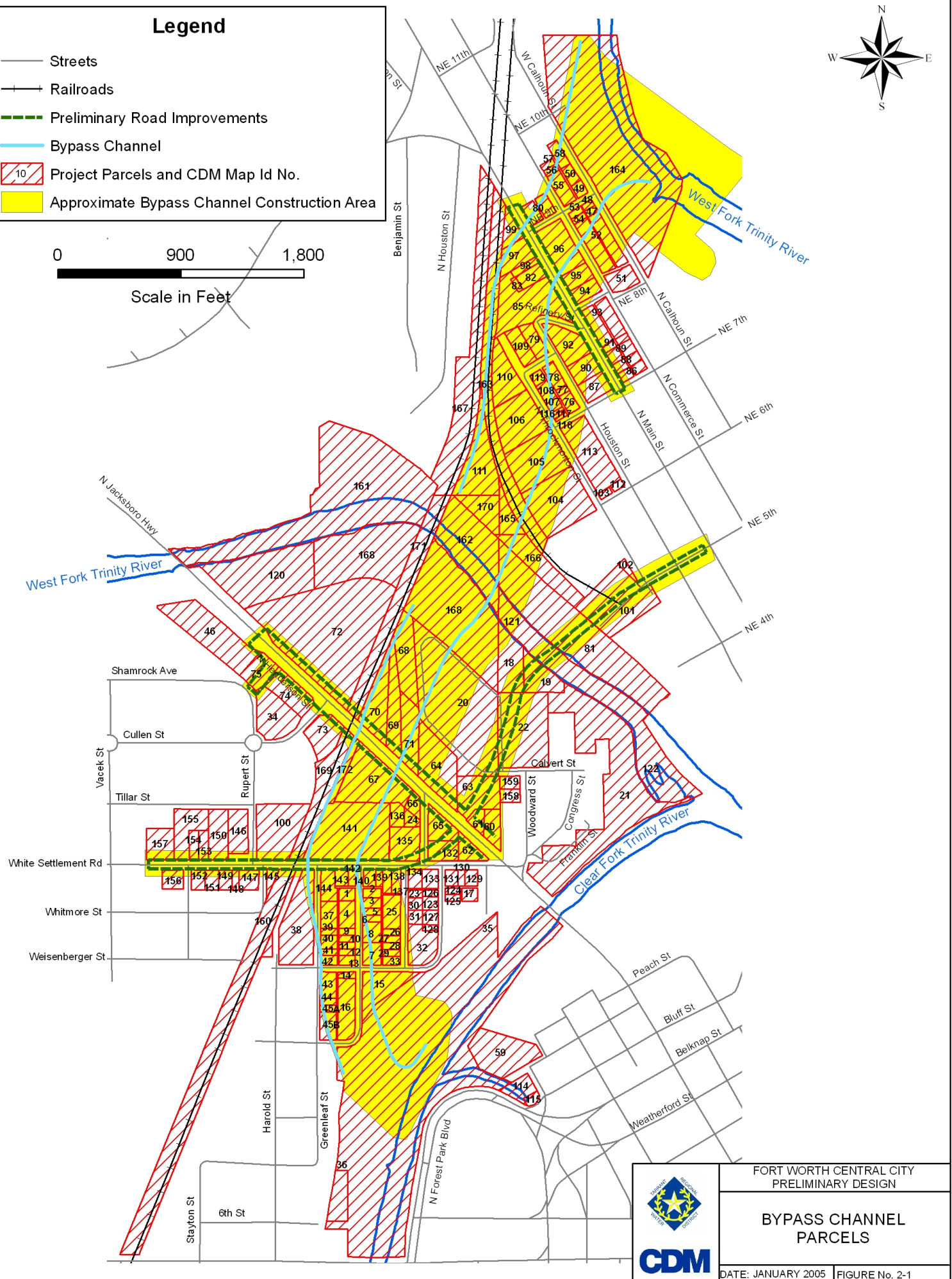
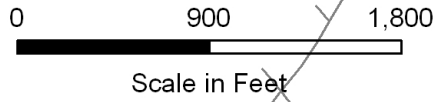
FORT WORTH CENTRAL CITY
PRELIMINARY DESIGN

HAZARDOUS, TOXIC,
AND RADIOACTIVE WASTE
LOCATION REFERENCE MAP

DATE: JANUARY 2005 FIGURE No. 1-2

Legend

-  Streets
-  Railroads
-  Preliminary Road Improvements
-  Bypass Channel
-  Project Parcels and CDM Map Id No.
-  Approximate Bypass Channel Construction Area



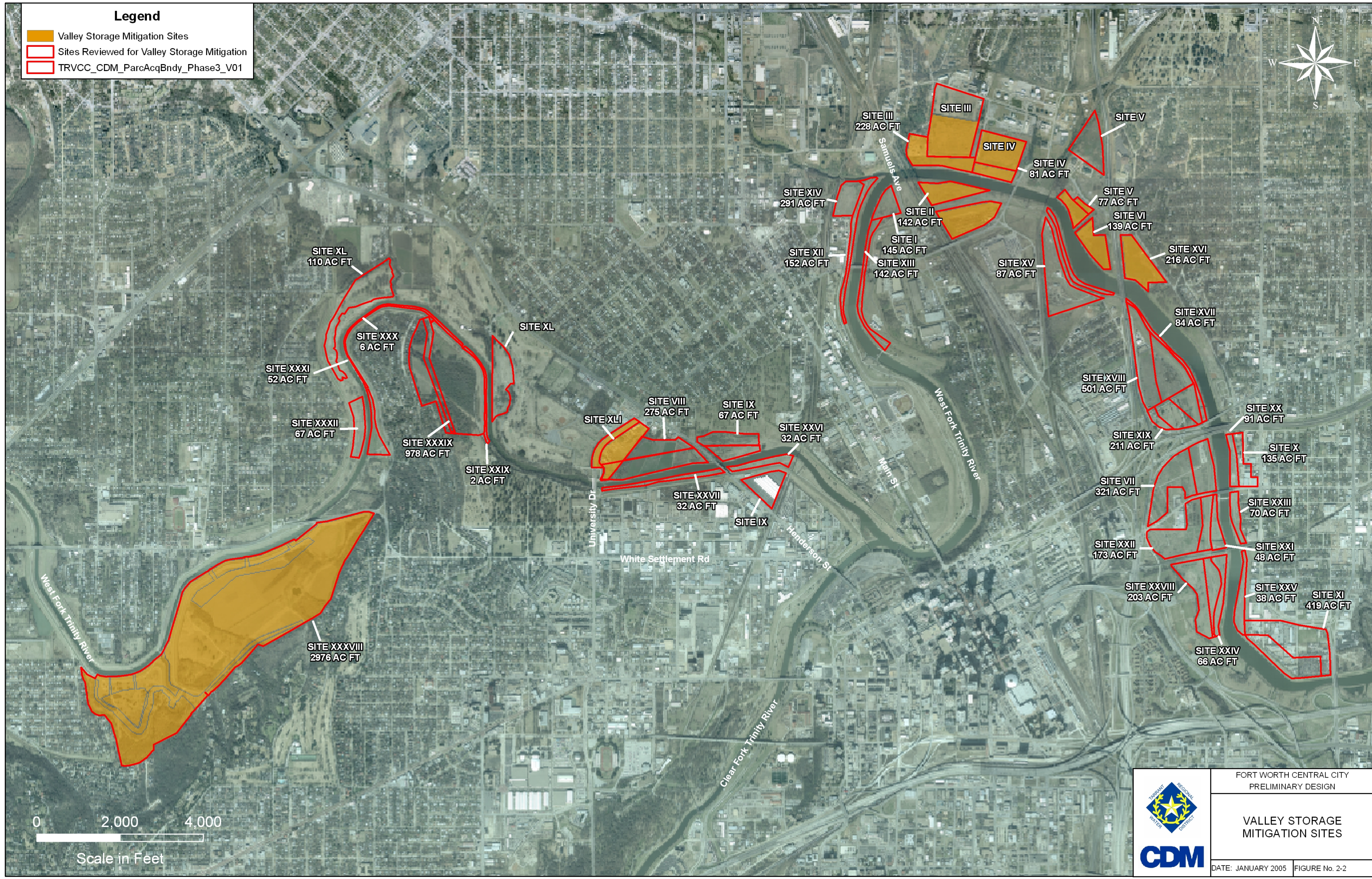
FORT WORTH CENTRAL CITY
PRELIMINARY DESIGN

**BYPASS CHANNEL
PARCELS**

DATE: JANUARY 2005 FIGURE No. 2-1

Legend

- Valley Storage Mitigation Sites
- Sites Reviewed for Valley Storage Mitigation
- TRVCC_CDM_ParcAcqBndy_Phase3_V01



FORT WORTH CENTRAL CITY
PRELIMINARY DESIGN

VALLEY STORAGE
MITIGATION SITES

DATE: JANUARY 2005 FIGURE No. 2-2



Former TechniCoat

Former American Cyanamid

Jay's Salvage

TXU Generation Co.

Bypass Channel

Main St

West Fork Trinity River

Clear Fork Trinity River

Interior Water Feature

0 500 1,000

Scale in Feet




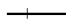




CDM

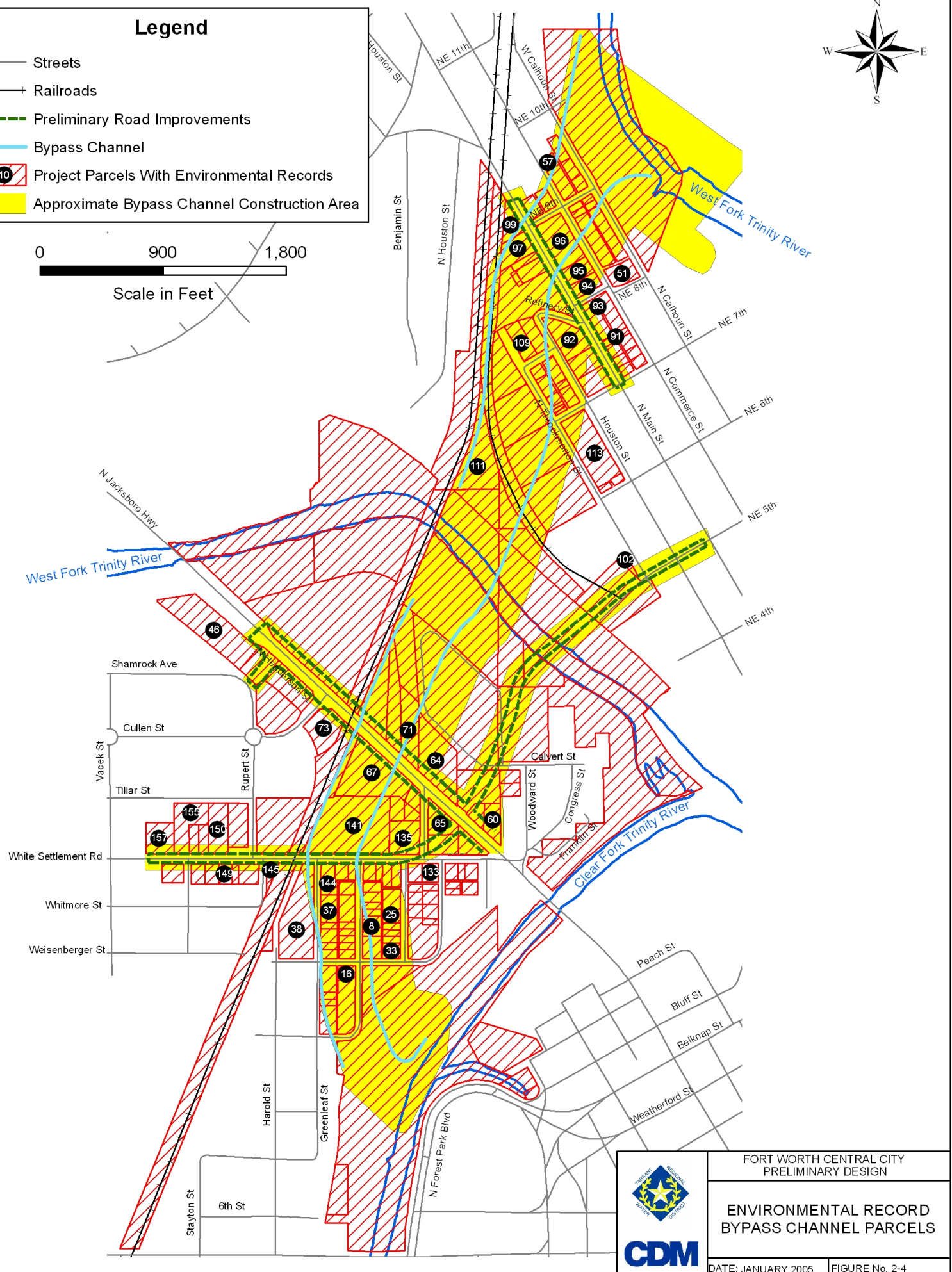
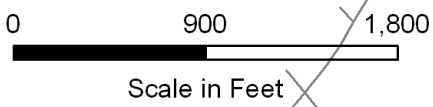
FORT WORTH CENTRAL CITY
PRELIMINARY DESIGN

**INTERIOR WATER FEATURE
PARCELS**

DATE: JANUARY 2005 | FIGURE No. 2-3

Legend

-  Streets
-  Railroads
-  Preliminary Road Improvements
-  Bypass Channel
-  Project Parcels With Environmental Records
-  Approximate Bypass Channel Construction Area








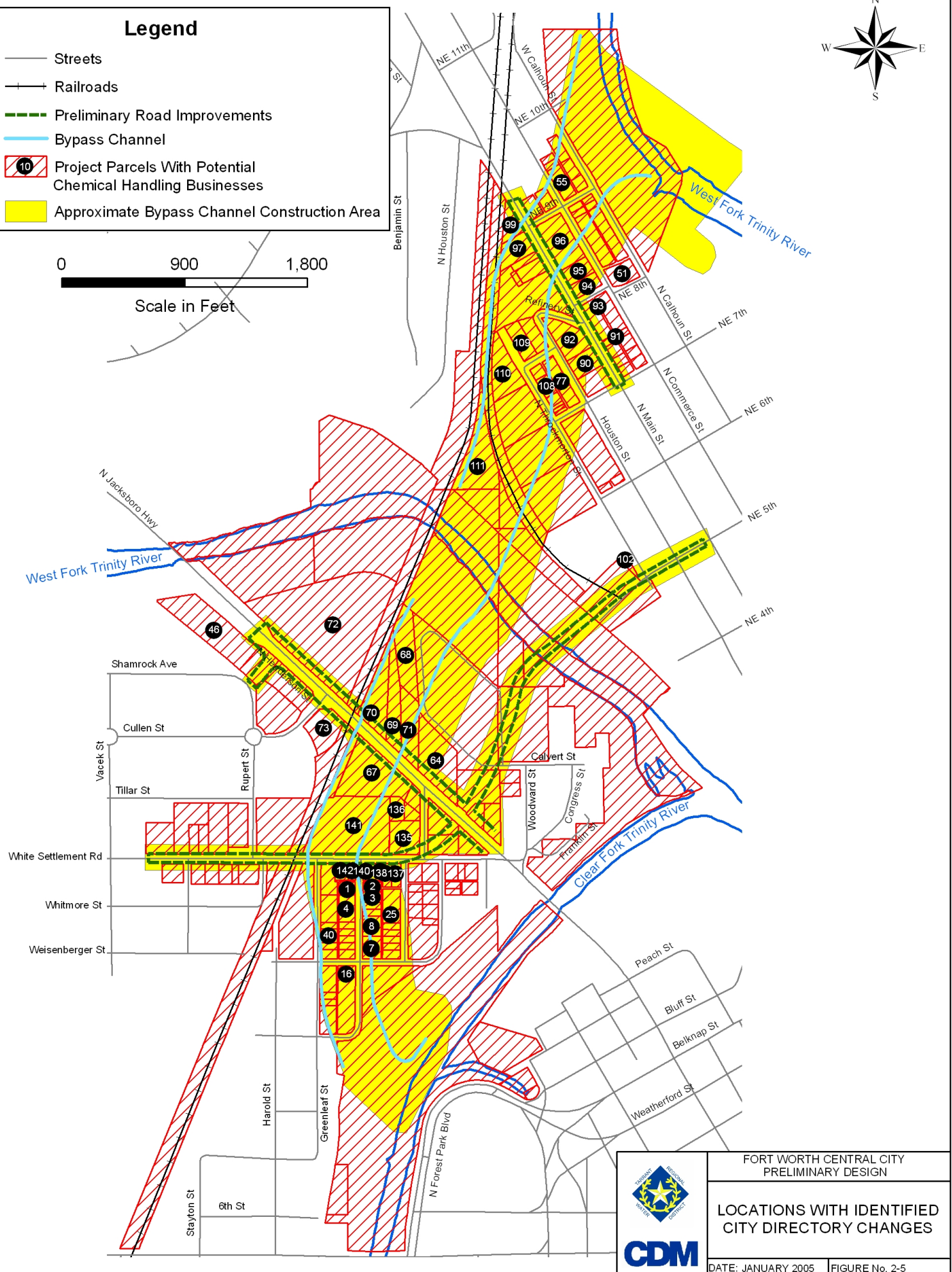
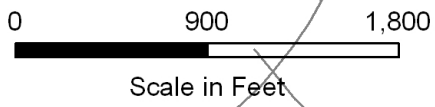
FORT WORTH CENTRAL CITY
PRELIMINARY DESIGN

**ENVIRONMENTAL RECORD
BYPASS CHANNEL PARCELS**

DATE: JANUARY 2005 FIGURE No. 2-4

Legend

-  Streets
-  Railroads
-  Preliminary Road Improvements
-  Bypass Channel
-  Project Parcels With Potential Chemical Handling Businesses
-  Approximate Bypass Channel Construction Area



FORT WORTH CENTRAL CITY
PRELIMINARY DESIGN

**LOCATIONS WITH IDENTIFIED
CITY DIRECTORY CHANGES**

DATE: JANUARY 2005 | FIGURE No. 2-5



FORT WORTH CENTRAL CITY
PRELIMINARY DESIGN

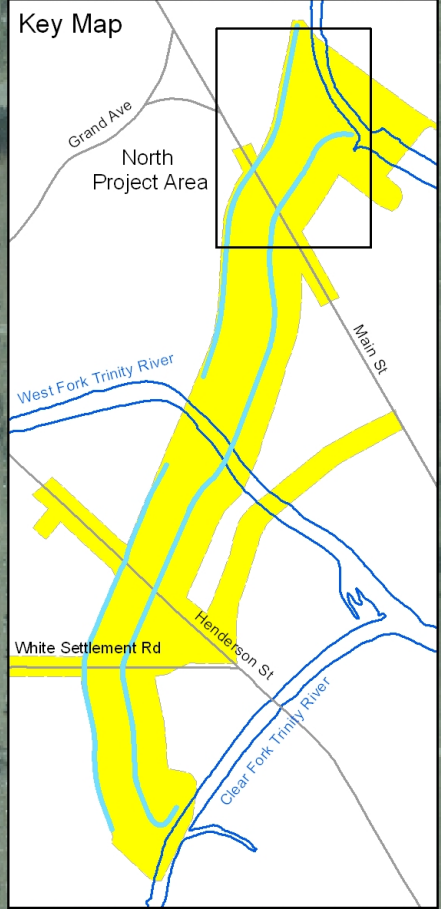
**BYPASS CHANNEL BORING AND
MONITORING WELL LOCATIONS**



DATE: JANUARY 2005 FIGURE No. 3-1

Legend

10 Parcels Assumed to have RECs and Requiring Remediation



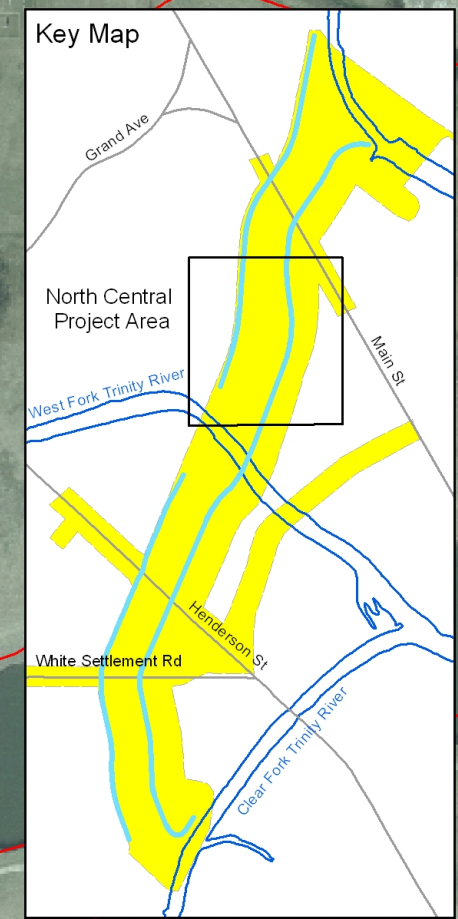
FORT WORTH CENTRAL CITY
PRELIMINARY DESIGN

**NORTH BYPASS CHANNEL
AREA RECs**

DATE: JANUARY 2005 FIGURE No. 5-1

Legend

10 Parcels Assumed to have RECs and Requiring Remediation



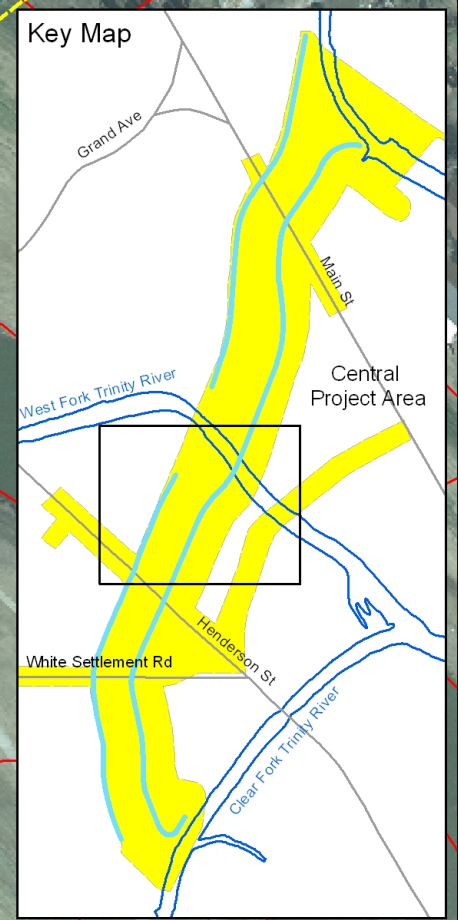
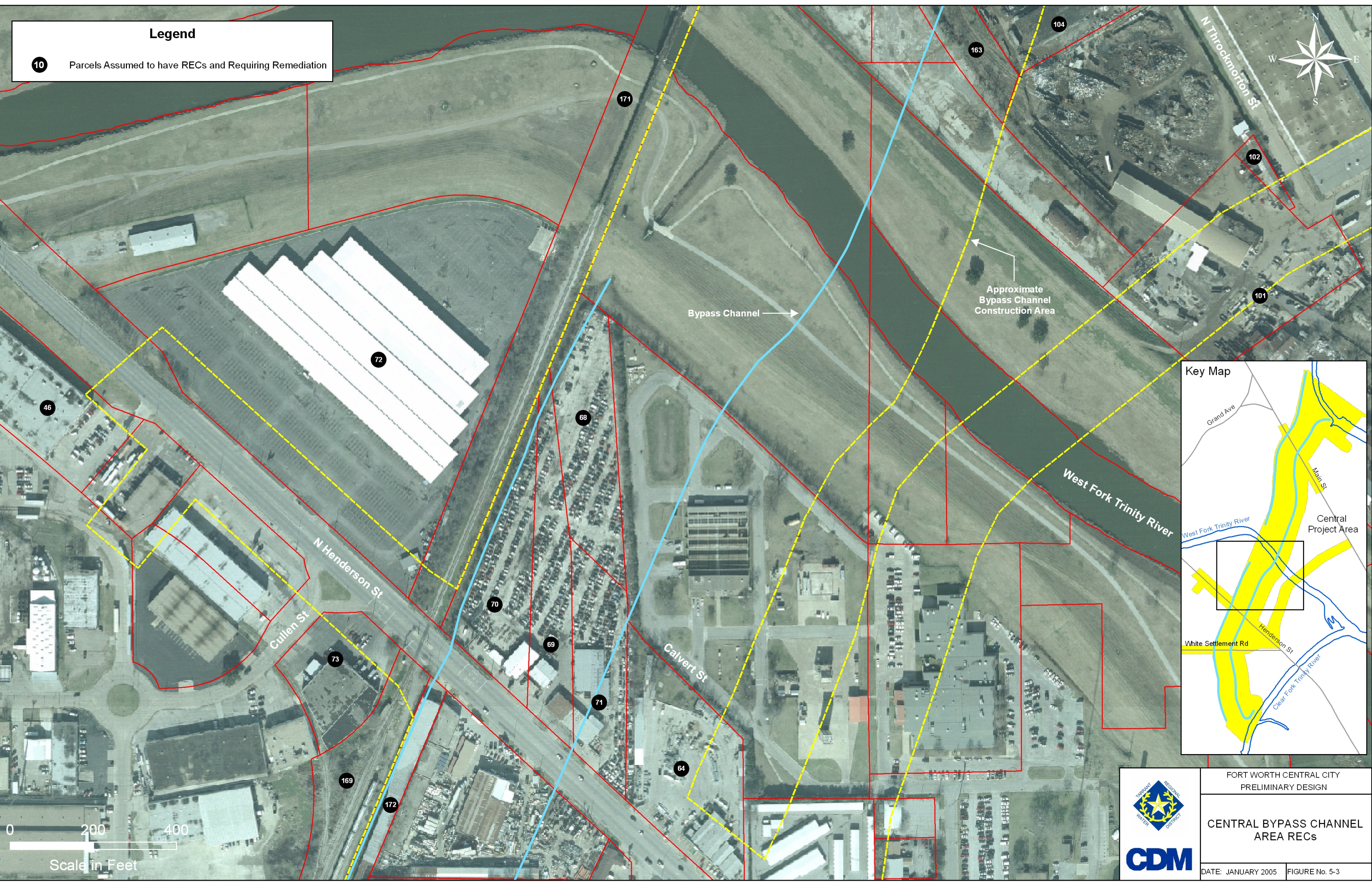
FORT WORTH CENTRAL CITY
PRELIMINARY DESIGN

**NORTH CENTRAL
BYPASS CHANNEL
AREA RECs**

DATE: JANUARY 2005 FIGURE No. 5-2

Legend

10 Parcels Assumed to have RECs and Requiring Remediation



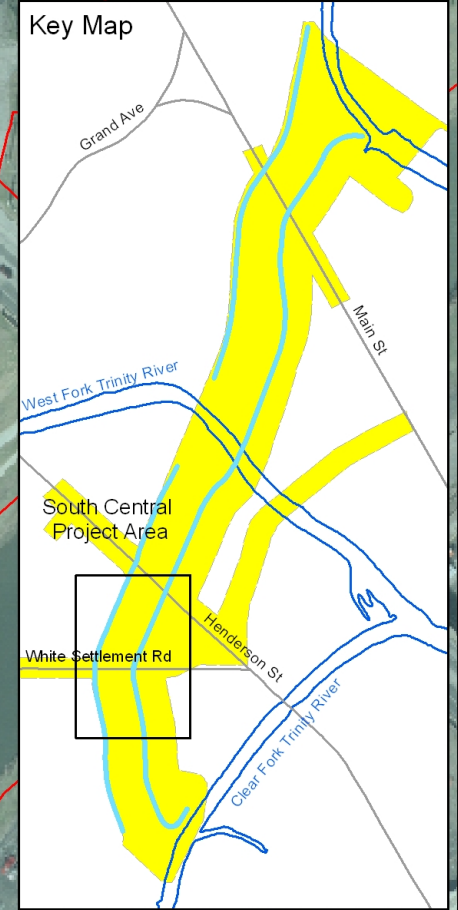
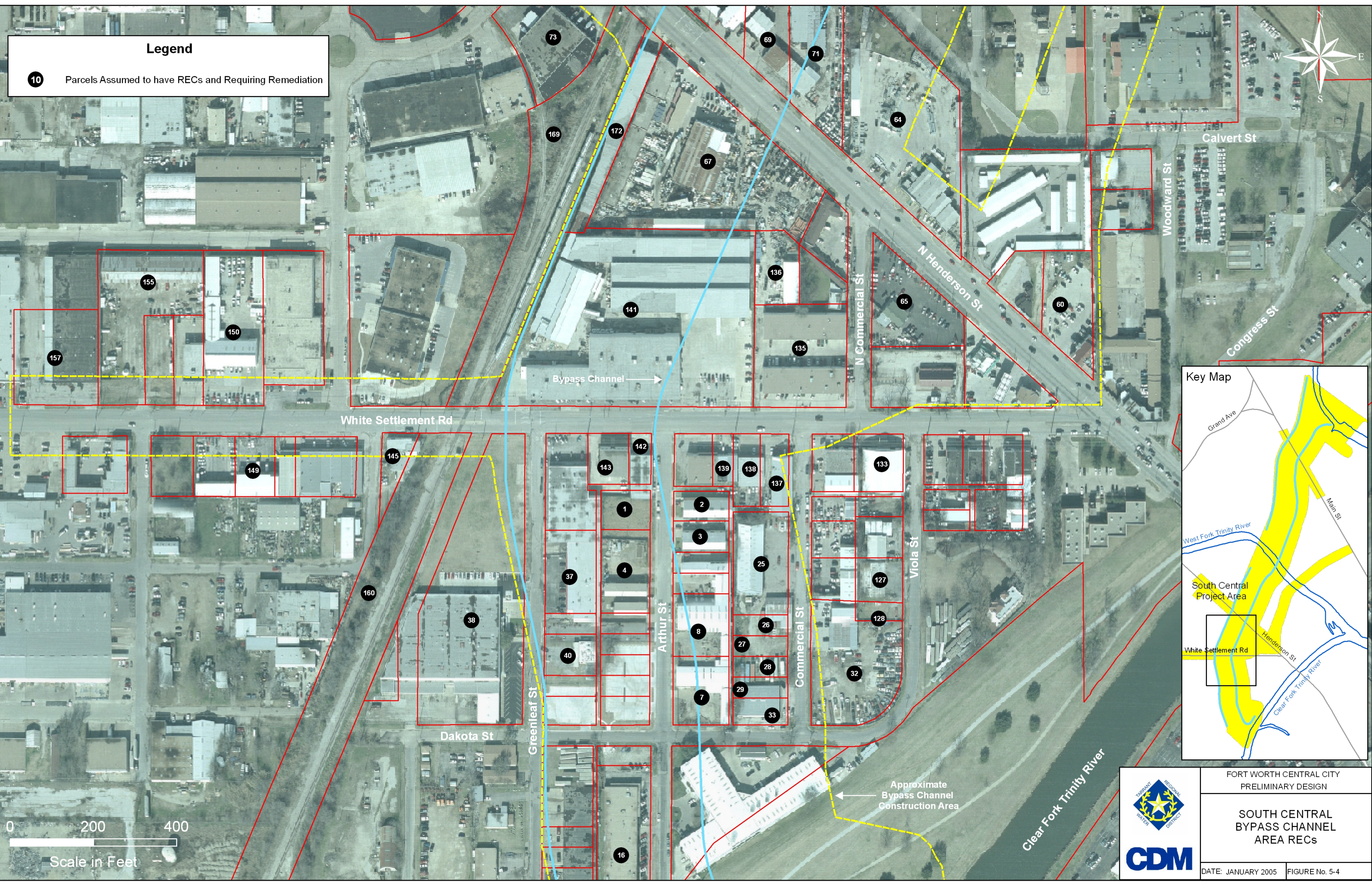
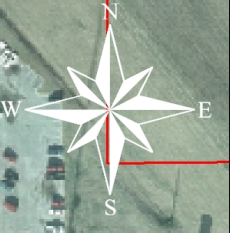
FORT WORTH CENTRAL CITY
PRELIMINARY DESIGN

**CENTRAL BYPASS CHANNEL
AREA RECs**

DATE: JANUARY 2005 FIGURE No. 5-3

Legend

10 Parcels Assumed to have RECs and Requiring Remediation



Approximate Bypass Channel Construction Area



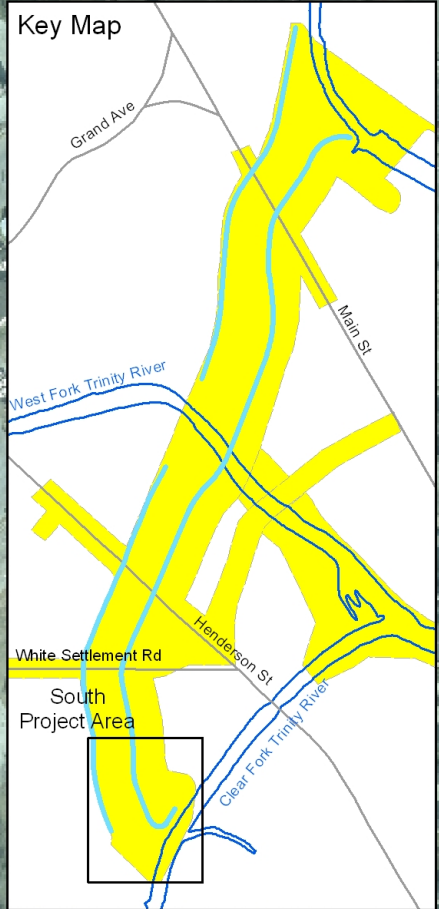
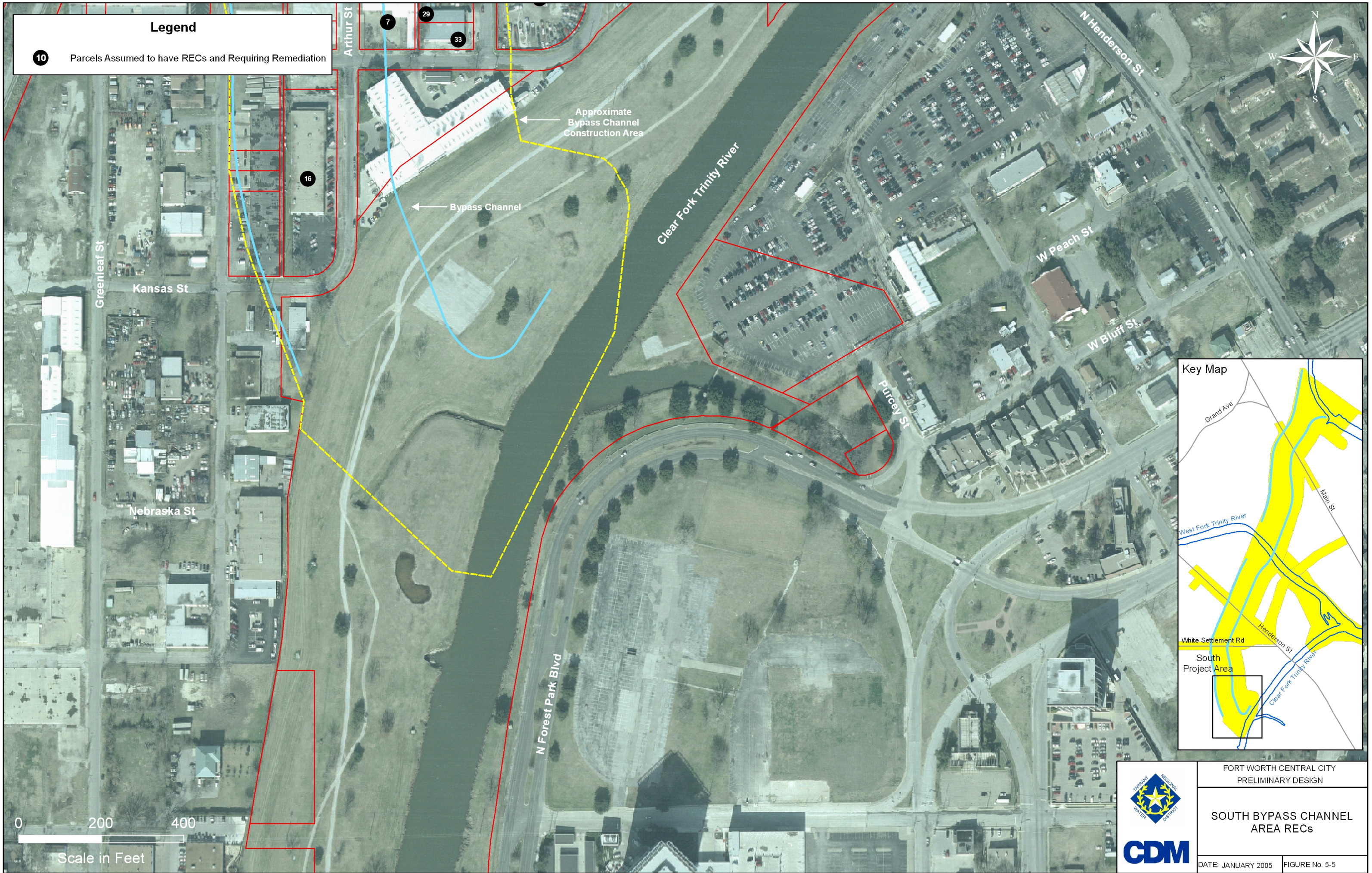
FORT WORTH CENTRAL CITY
PRELIMINARY DESIGN

**SOUTH CENTRAL
BYPASS CHANNEL
AREA RECS**

DATE: JANUARY 2005 FIGURE No. 5-4

Legend

10 Parcels Assumed to have RECs and Requiring Remediation



FORT WORTH CENTRAL CITY
PRELIMINARY DESIGN

**SOUTH BYPASS CHANNEL
AREA RECs**

DATE: JANUARY 2005 FIGURE No. 5-5