

**South Carolina CROP 2
ROMs**
(Resource Offering/Removal Maps)

October 2006

Prepared by:

Catherine M. Mater
Mater Engineering, Ltd.
101 SW Western Blvd.
Corvallis, Oregon 97333
Tel: 541-753-7335 Fx: 541-752-2952
mater@mater.com
www.mater.com

**South Carolina CROP 2
ROMs
(Center point: Saluda)**

October 2006

Table of Contents

	<i>Page</i>
South Carolina 2 All Agencies	4
All Agencies Location Map	5
NEPA Overviews	6
NEPA All Agencies	6
<i>Sumter NF: (Long Cane RD, Enoree RD)</i>	7
ROMs by Species.....	8
a) <u>Loblolly Pine Overview</u>	9
b) Loblolly Pine Location Map	10
c) Diameter by Year	11
d) Source Specific:	
<i>Charleston AFB (located in North, SC):</i>	12
<i>SC DNR:</i>	12
<i>Savannah River:</i>	13
<i>Sumter NF: (Long Cane RD, Enoree RD)</i>	14-15
a) <u>Longleaf Overview</u>	16
b) Longleaf Location Map.....	17
c) Diameter by Year	18
d) Source Specific:	
<i>Savannah River:</i>	19
a) <u>Slash Pine Overview</u>	20
b) Slash Pine Location Map	21
c) Diameter by Year	22
d) Source Specific:	
<i>Savannah River:</i>	23
a) <u>Gum Species Overview</u>	24
b) Gum Species Location Map	25
c) Diameter by Year	26
d) Source Specific:	
<i>Savannah River:</i>	27
<i>Sumter NF: (Enoree RD)</i>	27

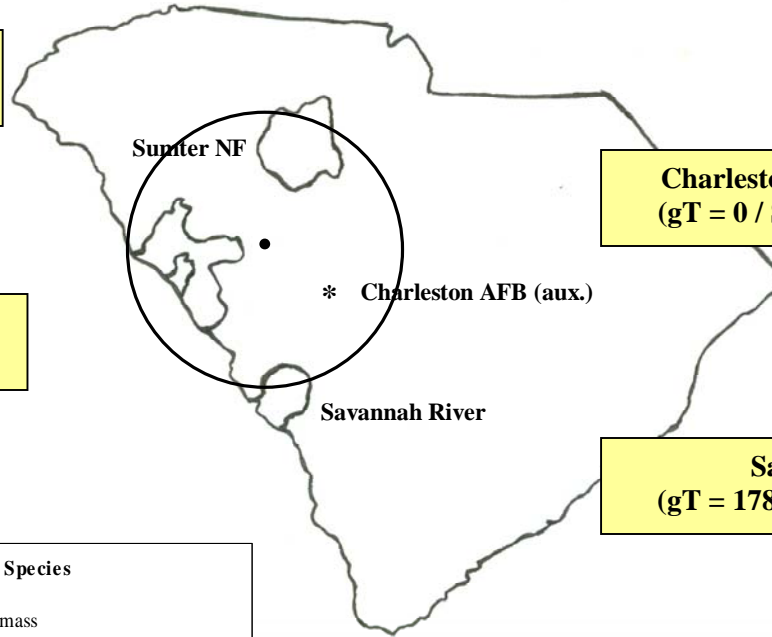
Table of Contents (cont.)

	<i>Page</i>
a) <u>Oak Species Overview</u>	28
b) Oak Species Location Map	29
c) Diameter by Year	30
d) Source Specific:	
<i>Charleston AFB (located in North, SC):</i>	31
<i>Savannah River:</i>	31
a) <u>Hardwoods Overview</u>	32
b) Hardwoods Location Map.....	33
c) Diameter by Year	34
d) Source Specific:	
<i>Charleston AFB (located in North, SC):</i>	35
<i>Savannah River:</i>	35
<i>Sumter NF: (Enoree RD)</i>	36

**South Carolina 2: All Agencies CROP offering '06 – '10
(gT = 354,000 / S = 102.13 mmbf / L = 194.86 mmbf)**

gT = green tons (up to 7" dbh)
S = small log mmbf (>7"-12" dbh)
L = large log mmbf (>12" dbh)

**Sumter NF: 2 RDs – 50%
(gT = 175,200 / S = 48.5 / L = 101.7)**



**Charleston AFB: – <1%
(gT = 0 / S = 0 / L = .496)**

**SC DNR: <1%
(gT = 0 / S = 0 / L = 1.089)**

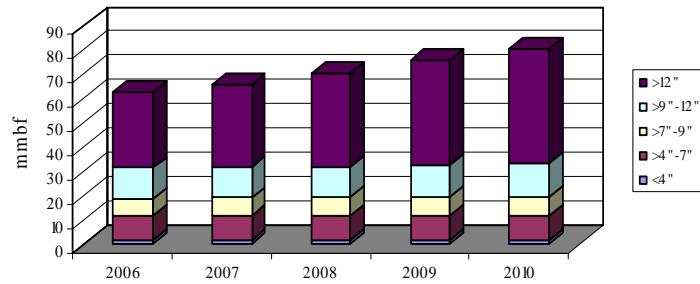
**Savannah River: – 49%
(gT = 178,800 / S = 53.625 / L = 91.575)**

**South Carolina 2 - All Agencies: All Species
(5-yr total = 355.986 mmbf)**

59 mmbf is <7" = 354,000 gT of biomass

102.125 mmbf is >7"-12" = small logs

194.861 mmbf is >12" = large logs



	gT	mmbf	
	Biomass	Small Log	Large Log
2006	69960	19.825	31.61914272
2007	69960	20.125	34.09714286
2008	71160	20.325	38.415
2009	71160	20.725	43.115
2010	71760	21.125	47.615
Totals	354000	102.125	194.8612856
%	17%	29%	55%
mmbf	59		

355.9862856

**South Carolina 2: All Agencies CROP offering '06 – '10
(gT = 354,000 / S = 102.13 mmbf / L = 194.86 mmbf)**

Charleston AFB: *

A Charleston AFB (.496429 mmbf)

SC DNR:

B SC DNR (1.089857 mmbf)

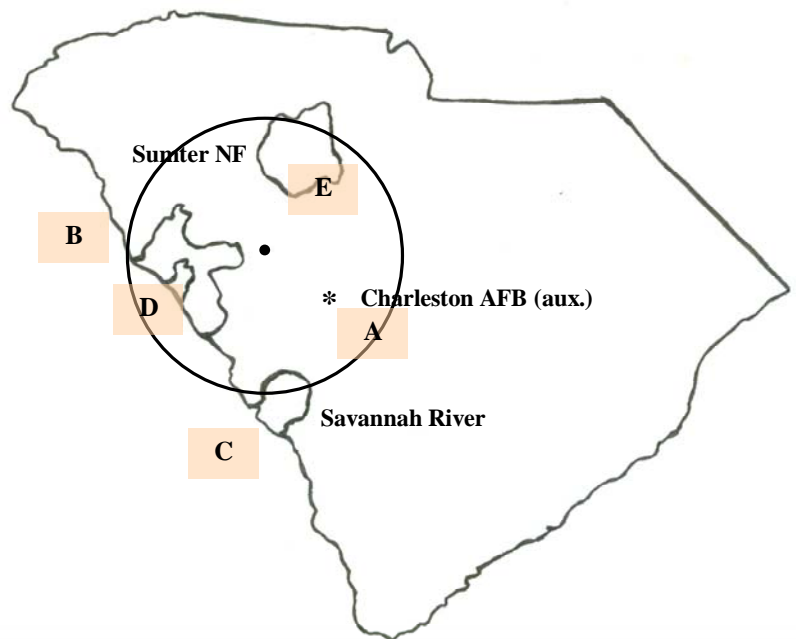
Savannah River:

C Savannah River (175 mmbf)

Sumter NF:

D Long Cane RD (94.9 mmbf)

E Enoree RD (84.5 mmbf)



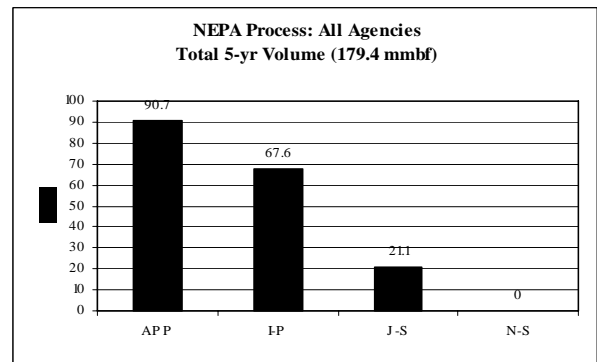
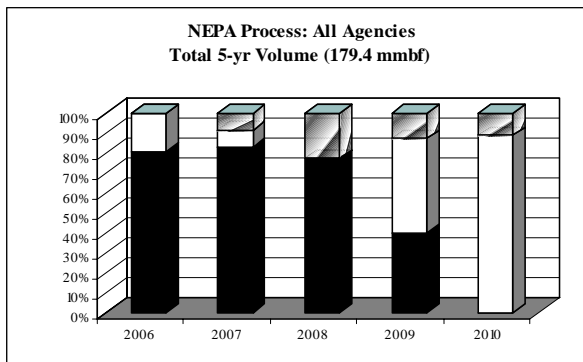
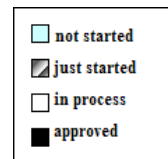
*located in North, SC

NEPA Overviews

(National Environmental Policy Act)

NEPA Process – All Agencies: Total 5-yr volume (179.4 mmbf; includes gT as mmbf)

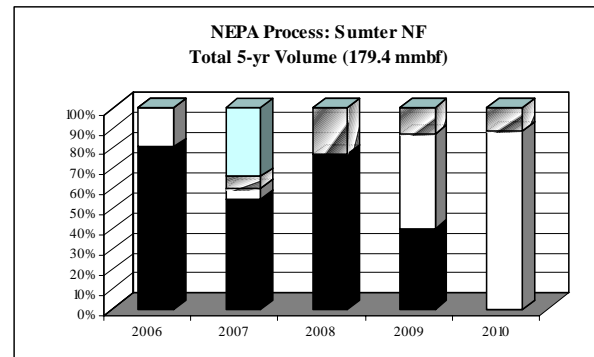
	<i>mmbf</i>	<i>% of total</i>
<i>Approved</i>	90.7	51%
<i>In process</i>	67.6	38%
<i>Just started</i>	21.1	12%
<i>Not started</i>	0	0%





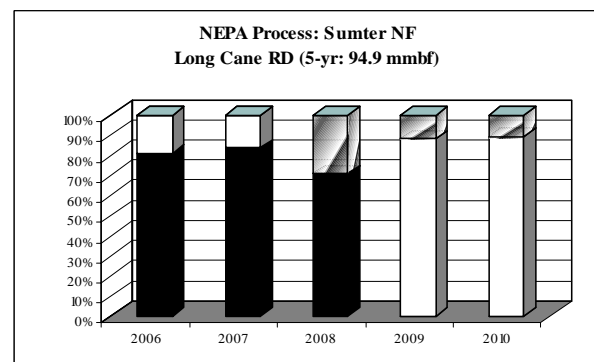
Sumter NF: Total 5-yr volume (179.4 mmbf; includes gT as mmbf)

	<i>mmbf</i>	<i>% of total</i>
Approved	90.7	51%
In process	67.6	38%
Just started	21.1	12%
Not started	0	0%



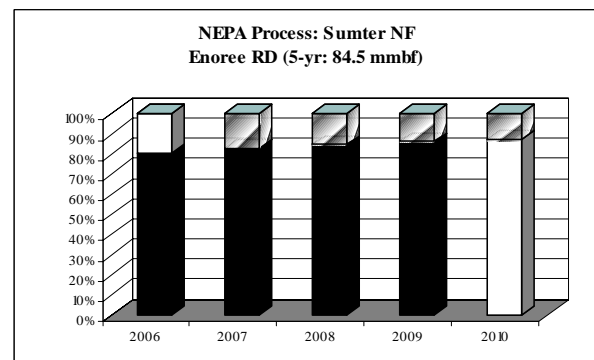
Sumter NF – Cane RD: (94.9 mmbf; includes gT as mmbf)

	<i>mmbf</i>	<i>% of total</i>
Approved	37.5	40%
In process	46.7	49%
Just started	10.7	11%
Not started	0	0%



Sumter NF – Enoree RD: (84.5 mmbf; includes gT as mmbf)

	<i>mmbf</i>	<i>% of total</i>
Approved	53.2	63%
In process	20.9	25%
Just started	10.4	12%
Not started	0	0%



ROMs by Species

(Resource Offering/Removal Maps)

South Carolina 2: Loblolly Pine CROP offering '06 - '10
(gT = 266,527 / S = 74.49 mmbf / L = 150.92 mmbf)

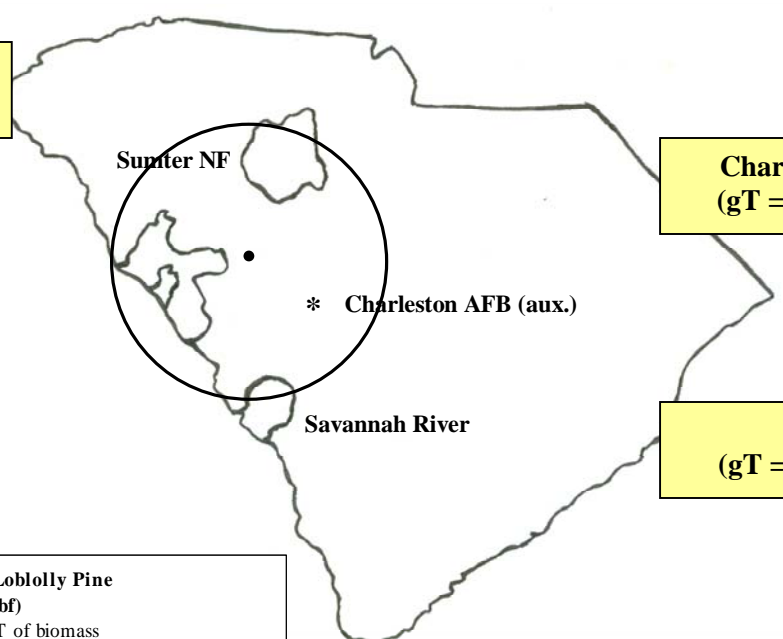
ROM # LLP 1

gT = green tons (up to 7" dbh)
 S = small log mmbf (>7"-12" dbh)
 L = large log mmbf (>12" dbh)

Sumter NF: 2 RDs - 66%
(gT = 175,200 / S = 47.5 / L = 101.2)

Charleston AFB: - <1%
(gT = 0 / S = 0 / L = .393)

SC DNR: - <1%
(gT = 0 / S = 0 / L = 1.089)



Savannah River: - 34%
(gT = 91,327 / S = 26.99 / L = 48.235)

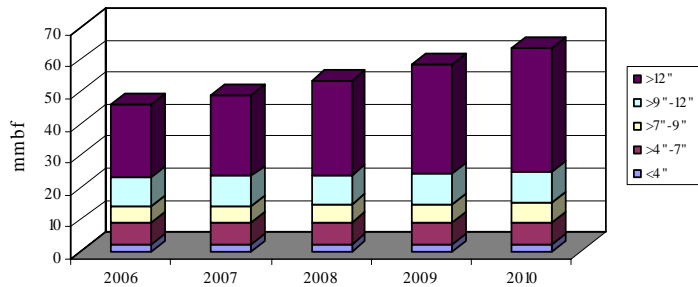
South Carolina 2- All Agencies: Loblolly Pine

(5-yr total = 269.83 mmbf)

44.421 mmbf is <7" = 266,527.5 gT of biomass

74.491 mmbf is >7"-12" = small logs

150.918 mmbf is >12" = large logs



	gT	mmbf	
	Biomass	Small Log	Large Log
2006	52465.5	14.29825	22.82257129
2007	52465.5	14.59825	25.25414286
2008	53665.5	14.79825	29.647
2009	53665.5	15.19825	34.347
2010	54265.5	15.59825	38.847
Totals	266527.5	74.49125	150.9177141
%	16%	28%	56%
mmbf	44.42125		

269.8302141

South Carolina 2: *Loblolly Pine* CROP offering '06 – '10
(gT = 266,527 / S = 74.49 mmbf / L = 150.92 mmbf)

ROM # LLP 1.1

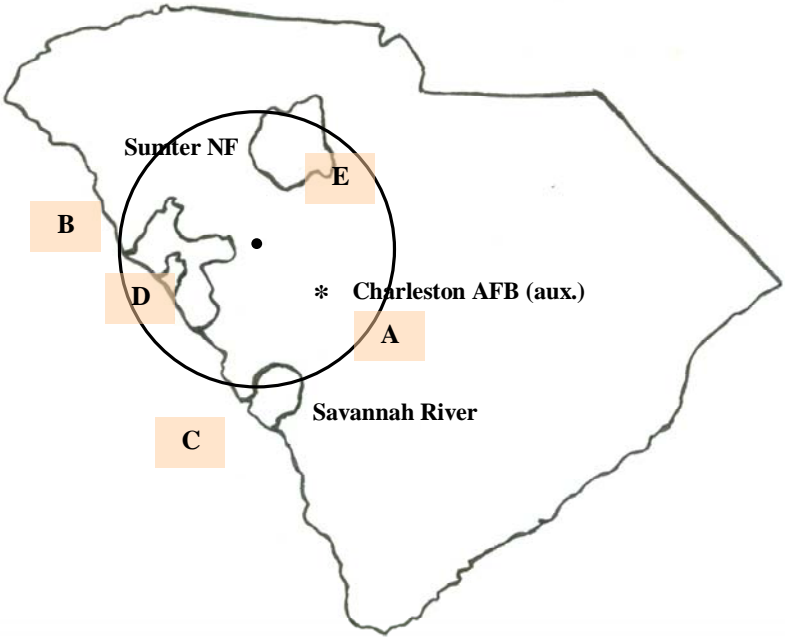
LLP = loblolly pine

Charleston AFB:
A *Charleston AFB (aux.)**

SC DNR:
B *SC DNR*

Savannah River:
C *Savannah River*

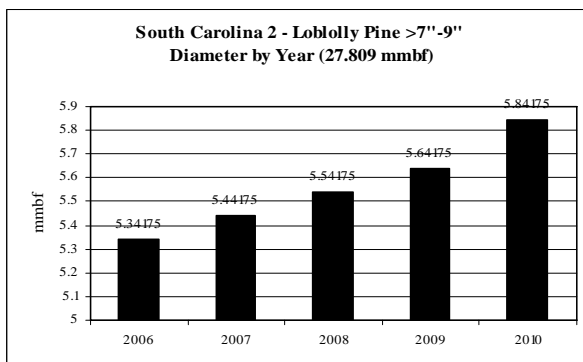
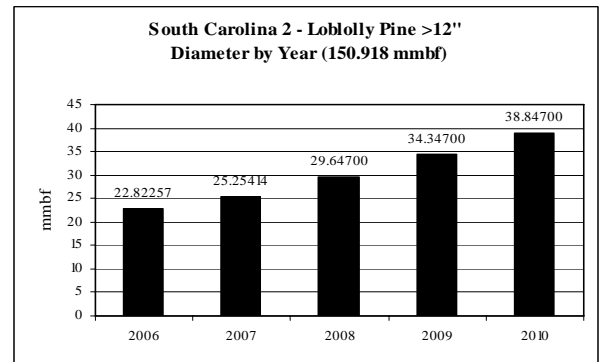
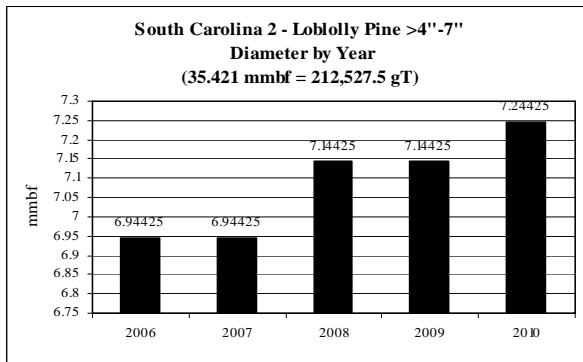
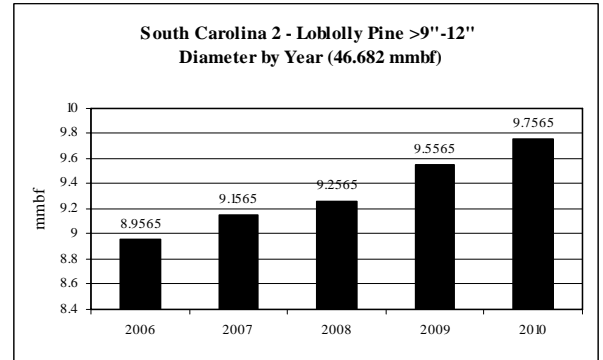
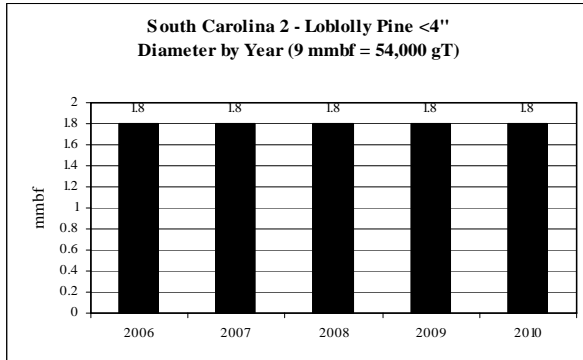
Sumter NF:
D *Long Cane RD*
E *Enoree RD*



*located in North, SC
**italics/bold = species offering in CROP

Loblolly Pine: Diameter by Year

ROM # LLP 1.2



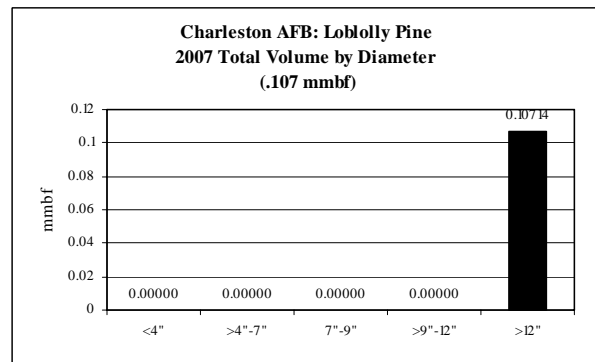
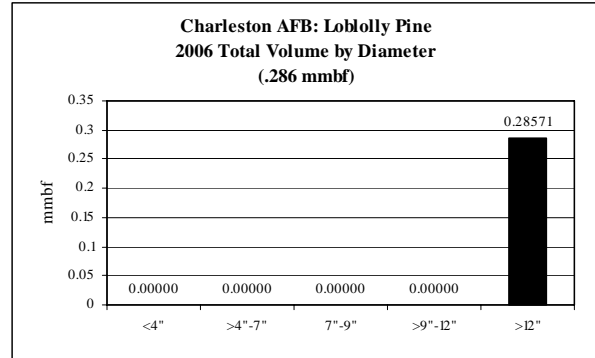
**South Carolina 2: Loblolly Pine CROP offering '06 – '10
(by agency)**

ROM # LLP 1.3

gT = green tons (up to 7" dbh)
S = small log mmbf (>7"-12" dbh)
L = large log mmbf (>12" dbh)

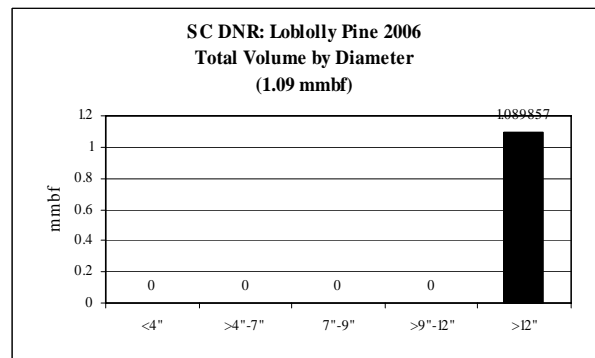
A

Loblolly Pine Charleston AFB: (North, SC)	5-yr = .393 mmbf
	<ul style="list-style-type: none"> • Only offered in '06 & '07
gT = 0	<ul style="list-style-type: none"> • <4" = 0% (0 mmbf) • >4"-7" = 0% (0 mmbf)
S = 0	<ul style="list-style-type: none"> • >7"-9" = 0% (0 mmbf) • >9"-12" = 0% (0 mmbf)
L = .393	<ul style="list-style-type: none"> • >12" = 100% (.393 mmbf)



B

Loblolly Pine SC DNR	5-yr = 1.09 mmbf
	<ul style="list-style-type: none"> • Only offered in '06
gT = 0	<ul style="list-style-type: none"> • <4" = 0% (0 mmbf) • >4"-7" = 0% (0 mmbf)
S = 0	<ul style="list-style-type: none"> • >7"-9" = 0% (0 mmbf) • >9"-12" = 0% (0 mmbf)
L = 1.09	<ul style="list-style-type: none"> • >12" = 100% (1.09 mmbf)



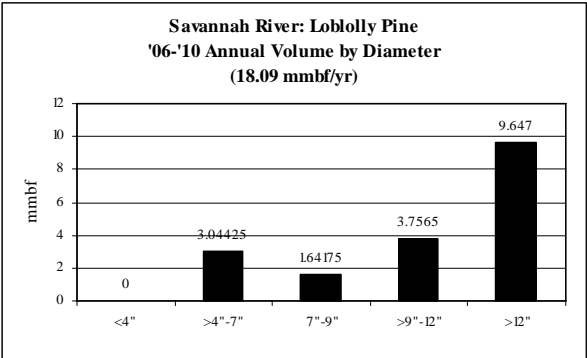
**South Carolina 2: Loblolly Pine CROP offering '06 – '10
(by agency)**

ROM #LLP 1.4

gT = green tons (up to 7" dbh)
S = small log mmbf (>7"-12" dbh)
L = large log mmbf (>12" dbh)

C

Loblolly Pine Savannah River	5-yr = 90.45 mmbf; 18.09 mmbf/yr
	<ul style="list-style-type: none"> • Level supply from year to year
gT =91,327	<ul style="list-style-type: none"> • <4" = 0% (0 mmbf) • >4"-7" = 17% (15.221 mmbf)
S = 26.991	<ul style="list-style-type: none"> • >7"-9" = 9% (8.209 mmbf) • >9"-12" = 21% (18.782 mmbf)
L = 48.235	<ul style="list-style-type: none"> • >12" = 53% (48.235 mmbf)



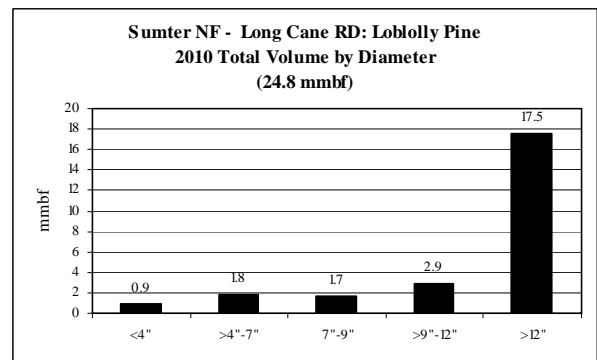
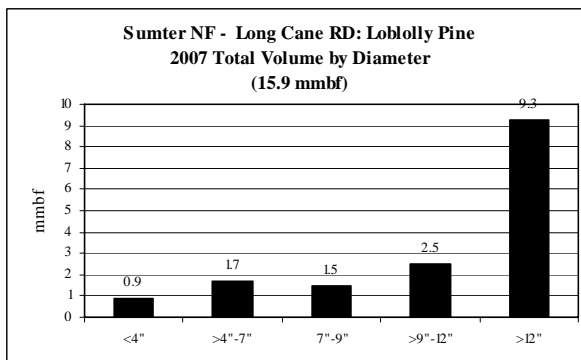
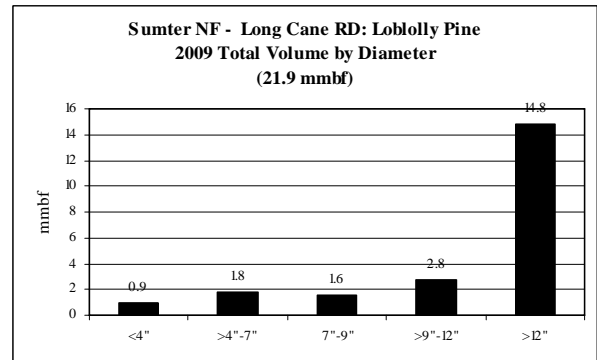
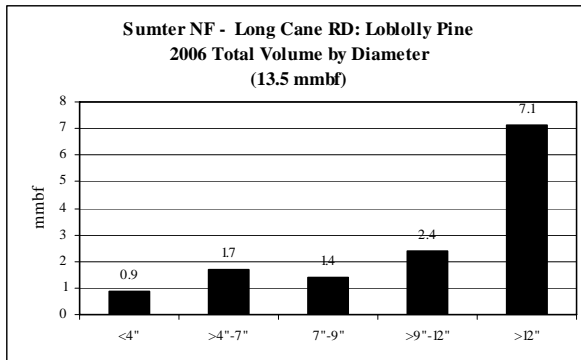
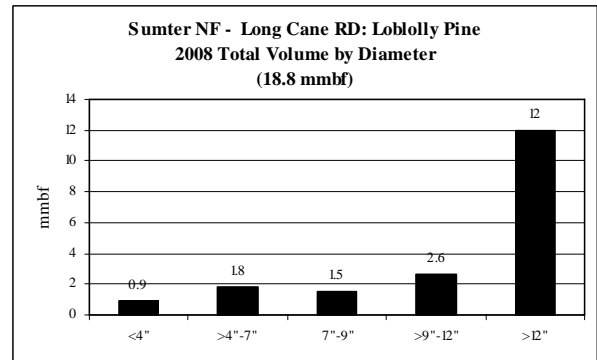
**South Carolina 2: Loblolly Pine CROP offering '06 – '10
(by agency)**

ROM #LLP 1.5

gT = green tons (up to 7" dbh)
S = small log mmbf (>7"-12" dbh)
L = large log mmbf (>12" dbh)

D

Loblolly Pine Sumter NF: Long Cane RD	5-yr = 94.9 mmbf
	<ul style="list-style-type: none"> • Unlevel, but growing supply from year to year
gT = 79,800	<ul style="list-style-type: none"> • <4" = 5% (4.5 mmbf) • >4"-7" = 9% (8.8 mmbf)
S = 20.9	<ul style="list-style-type: none"> • >7"-9" = 8% (7.7 mmbf) • >9"-12" = 14% (13.2 mmbf)
L = 60.7	<ul style="list-style-type: none"> • >12" = 64% (60.7 mmbf)



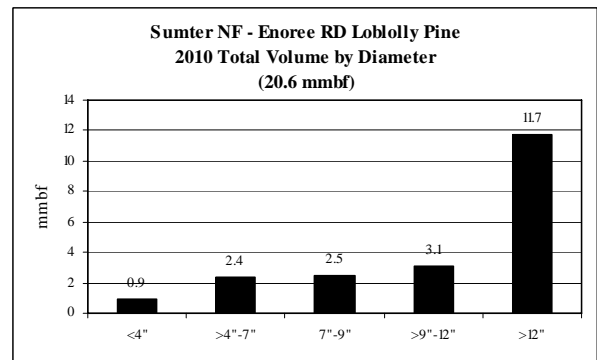
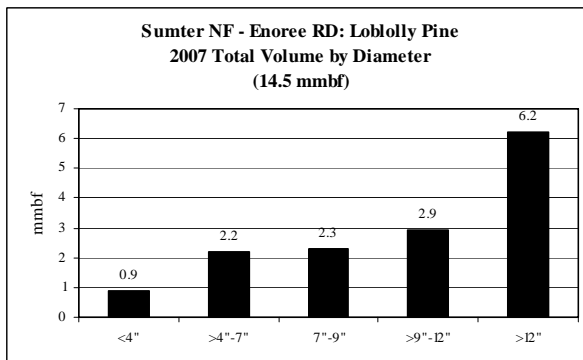
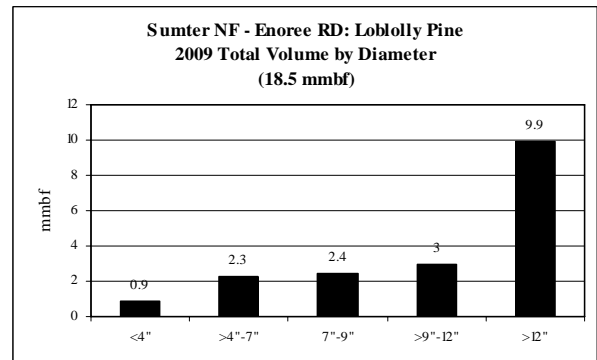
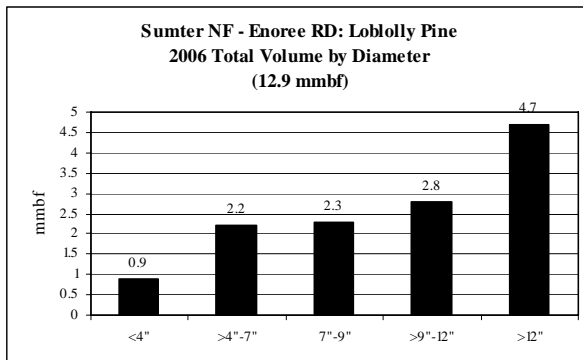
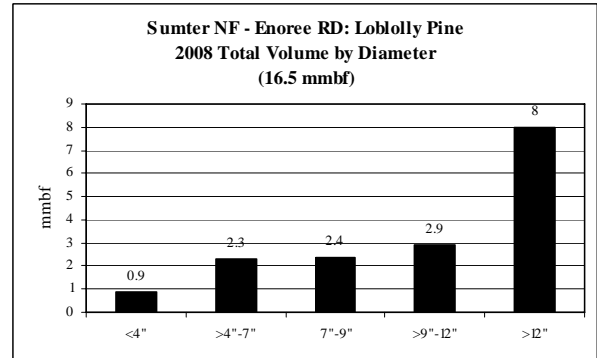
**South Carolina 2: Loblolly Pine CROP offering '06 – '10
(by agency)**

ROM #LLP 1.6

gT = green tons (up to 7" dbh)
S = small log mmbf (>7"-12" dbh)
L = large log mmbf (>12" dbh)

E

Loblolly Pine Sumter NF: Enoree RD	5-yr = 83 mmbf
	<ul style="list-style-type: none"> • Unlevel, but growing supply from year to year
gT = 95,400	<ul style="list-style-type: none"> • <4" = 5% (4.5 mmbf) • >4"-7" = 14% (11.4 mmbf)
S = 26.6	<ul style="list-style-type: none"> • >7"-9" = 14% (11.9 mmbf) • >9"-12" = 18% (14.7 mmbf)
L = 40.5	<ul style="list-style-type: none"> • >12" = 49% (40.5 mmbf)

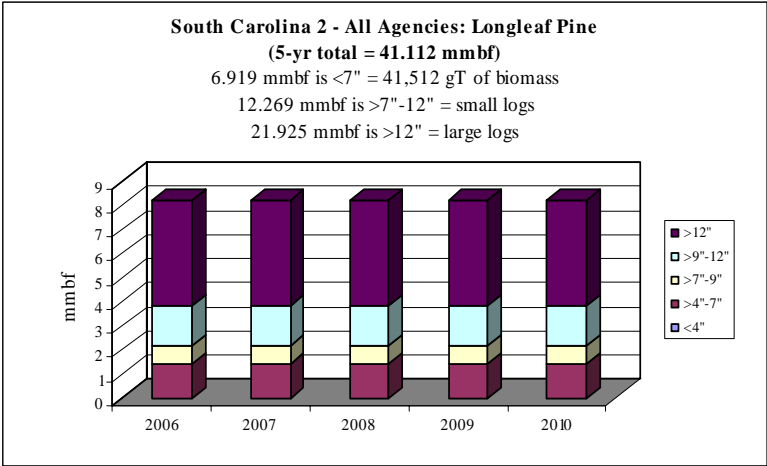
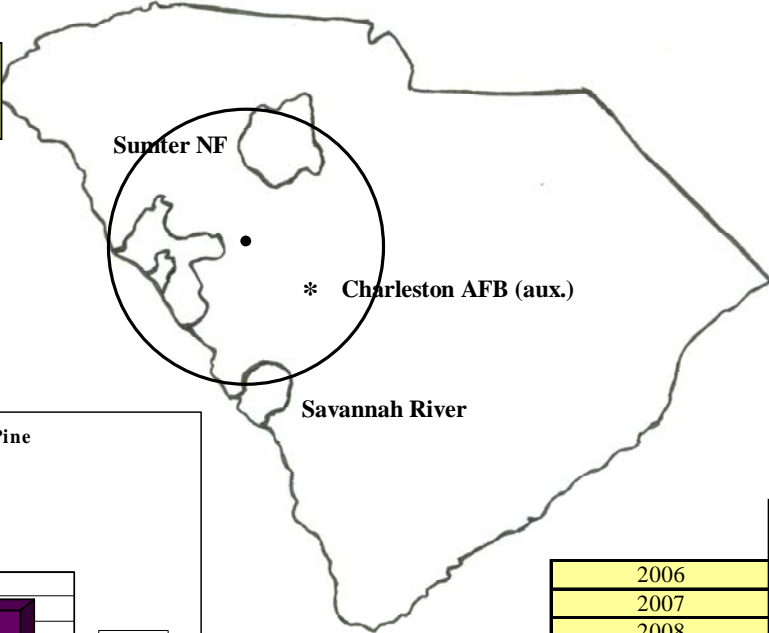


South Carolina 2: Longleaf Pine CROP offering '06 - '10
(gT = 41,512.5 / S = 12.269 mmbf / L = 21.925 mmbf)

ROM # L. Leaf.1

gT = green tons (up to 7" dbh)
 S = small log mmbf (>7"-12" dbh)
 L = large log mmbf (>12" dbh)

Savannah River - 100%
(gT = 41,512.5 / S = 12.269 / L = 21.925)



	gT	mmbf	
	Biomass	Small Log	Large Log
2006	8302.5	2.45375	4.385
2007	8302.5	2.45375	4.385
2008	8302.5	2.45375	4.385
2009	8302.5	2.45375	4.385
2010	8302.5	2.45375	4.385
Totals	41512.5	12.26875	21.925
%	17%	30%	53%
mmbf	6.91875		

41.1125

South Carolina 2: *Longleaf Pine* CROP offering '06 – '10
(gT = 41,512.5 / S = 12.269 mmbf / L = 1.622 mmbf)

ROM #L. Leaf 1.1

L. Leaf = longleaf pine

Charleston AFB: *

A Charleston AFB

SC DNR:

B SC DNR

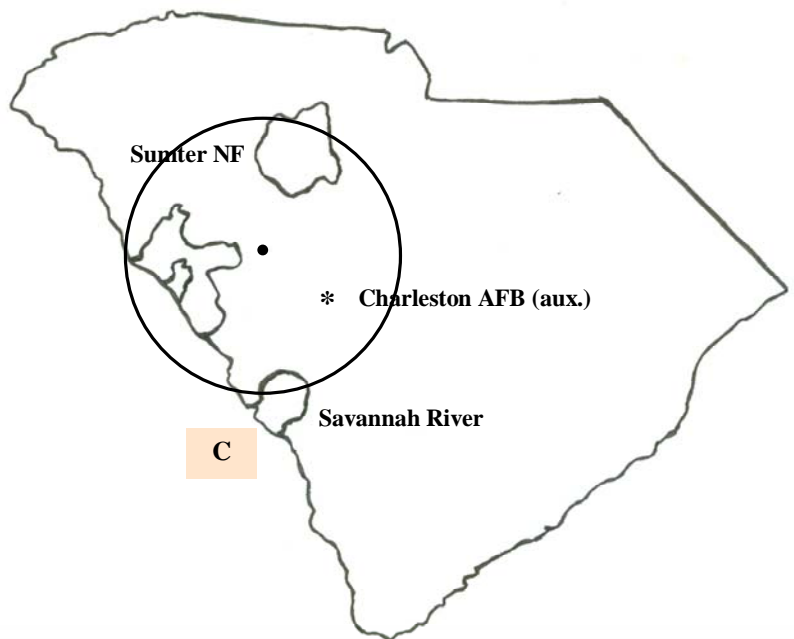
Savannah River:

C *Savannah River*

Sumter NF:

D Long Cane RD

E Enoree RD

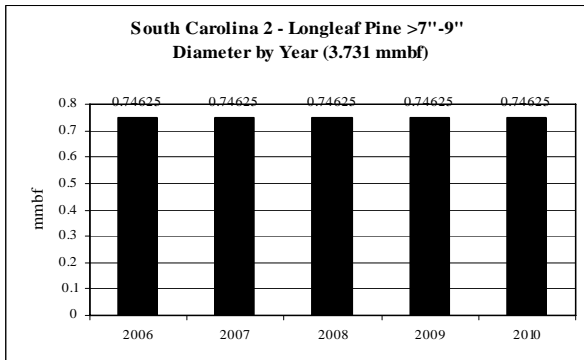
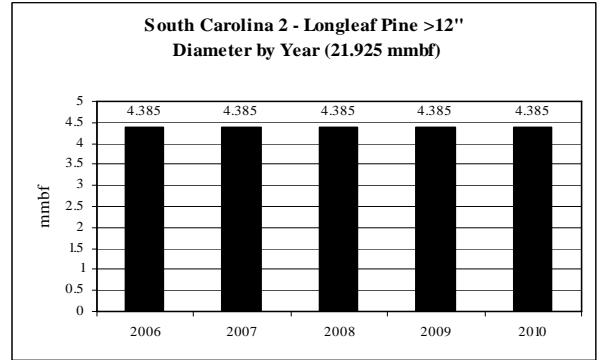
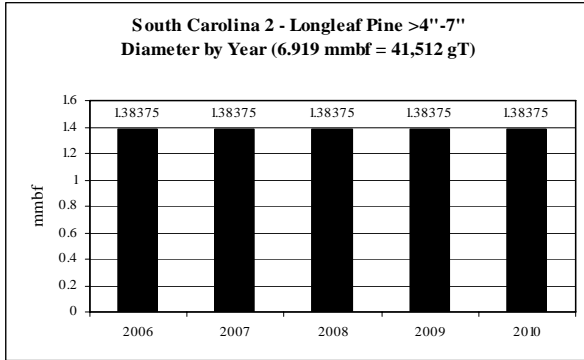


*located in North, SC

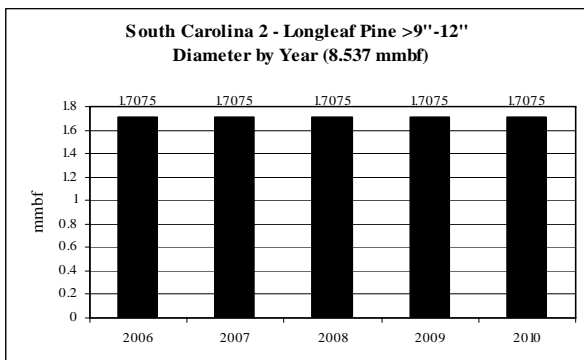
**italics/bold = species offering in CROP

Longleaf Pine: Diameter by Year

ROM # L. Leaf 1.2



No volume for <4" dbh



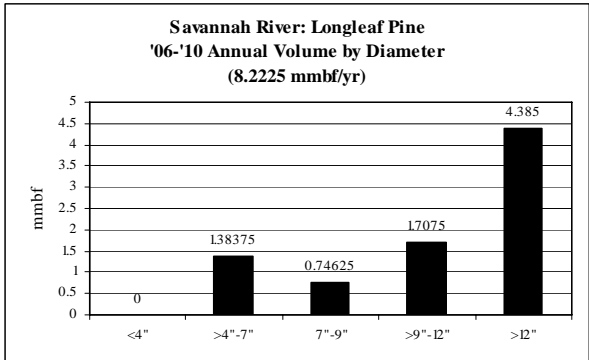
**South Carolina 2: Longleaf Pine CROP offering '06 – '10
(by agency)**

ROM # L. Leaf 1.3

gT = green tons (up to 7" dbh)
S = small log mmbf (>7"-12" dbh)
L = large log mmbf (>12" dbh)

C

Longleaf Pine Savannah River	5-yr = 41.112 mmbf; 8.225 mmbf/yr
	<ul style="list-style-type: none"> • Level supply from year to year
gT = 41,512	<ul style="list-style-type: none"> • <4" = 0% (0 mmbf) • >4"-7" = 17% (6.9187 mmbf)
S = 12.268	<ul style="list-style-type: none"> • >7"-9" = 9% (3.731 mmbf) • >9"-12" = 21% (8.537 mmbf)
L = 21.925	<ul style="list-style-type: none"> • >12" = 53% (21.925 mmbf)

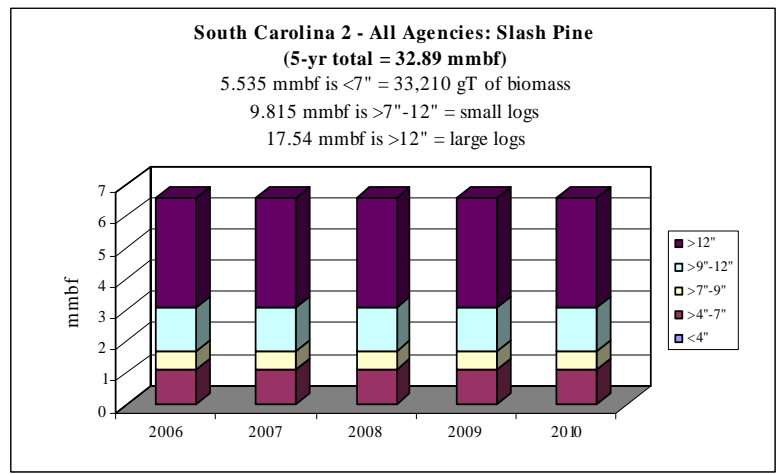
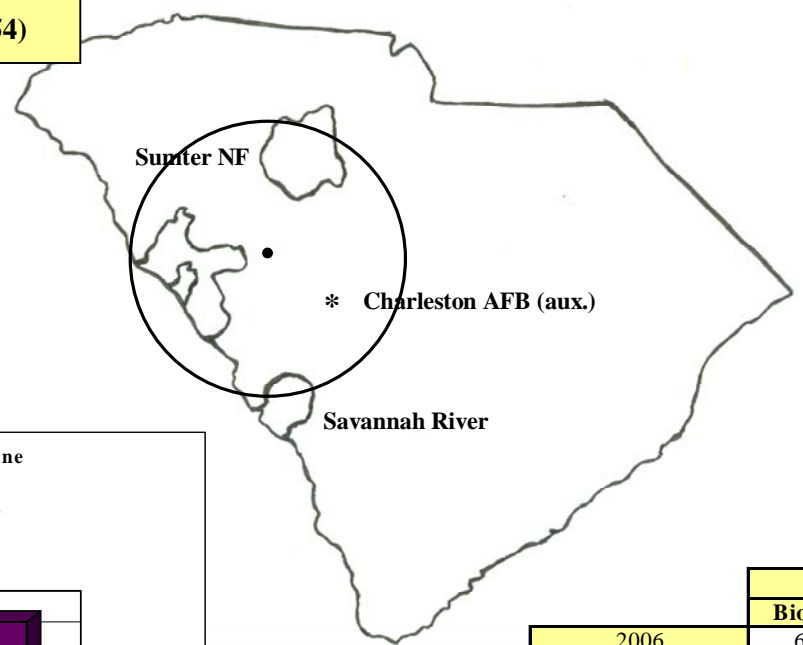


South Carolina 2: Slash Pine CROP offering '06 – '10
(gT = 33,210 / S = 9.815 mmbf / L = 17.54 mmbf)

ROM # Slash P 1

gT = green tons (up to 7" dbh)
 S = small log mmbf (>7"-12" dbh)
 L = large log mmbf (>12" dbh)

Savannah River: 100%
(gT = 33,210 / S = 9.815 / L = 17.54)



	gT	mmbf	
	Biomass	Small Log	Large Log
2006	6642	1.963	3.508
2007	6642	1.963	3.508
2008	6642	1.963	3.508
2009	6642	1.963	3.508
2010	6642	1.963	3.508
Totals	33210	9.815	17.54
%	17%	30%	53%
mmbf	5.535		

32.89

South Carolina 2: *Slash Pine* CROP offering '06 – '10
(gT = 33,210 / S = 9.815 mmbf / L = 17.54 mmbf)

ROM # Slash P 1.1

Slash P = slash pine

Charleston AFB: *

A Charleston AFB

SC DNR:

B SC DNR

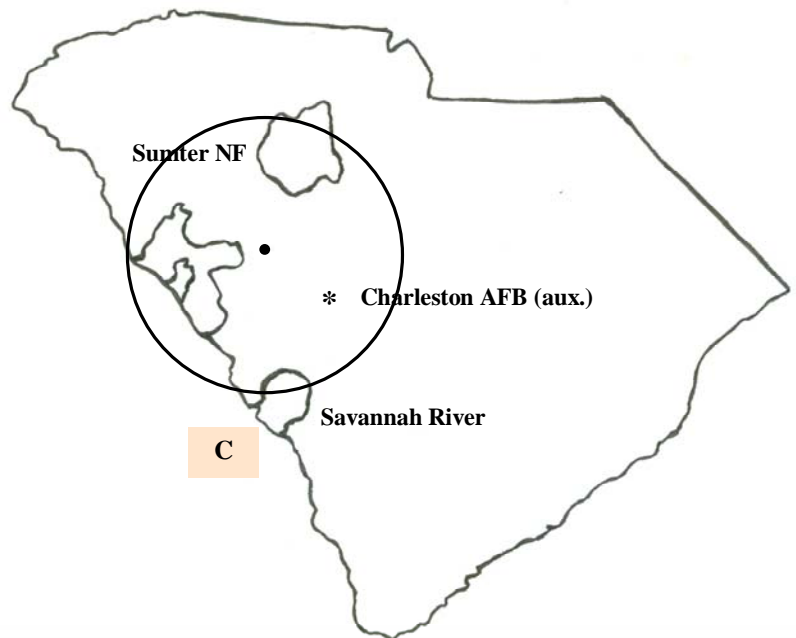
Savannah River:

C *Savannah River*

Sumter NF:

D Long Cane RD

E Enoree RD

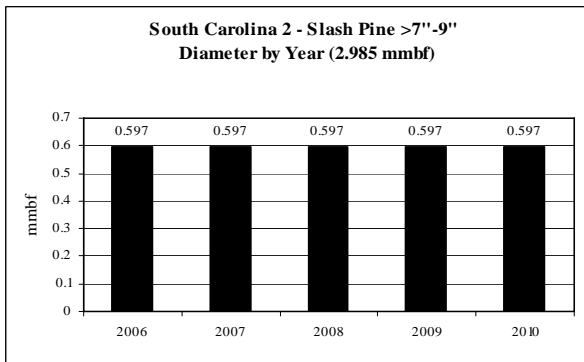
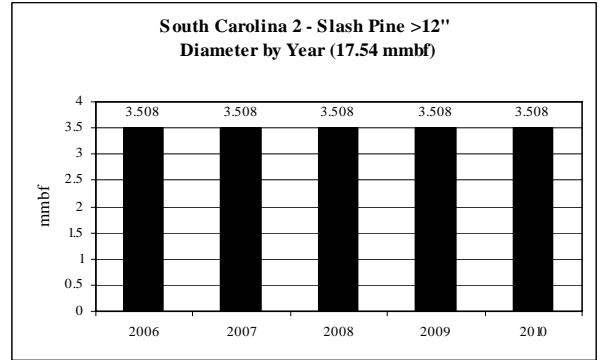
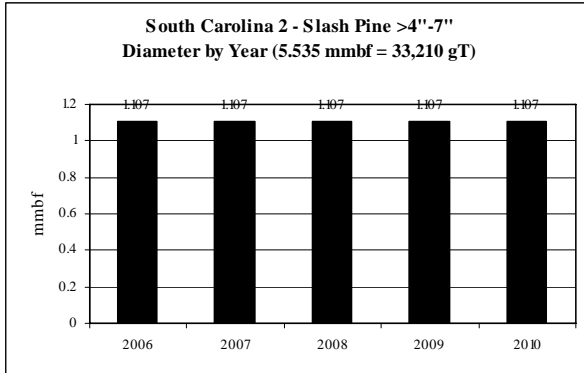


*located in North, SC

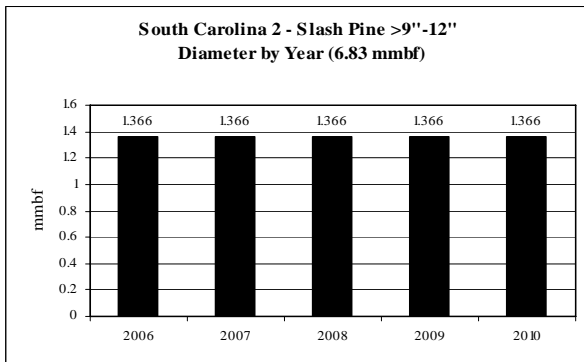
**italics/bold = species offering in CROP

Slash Pine: Diameter by Year

ROM # Slash P 1.2



No volume for <4" dbh



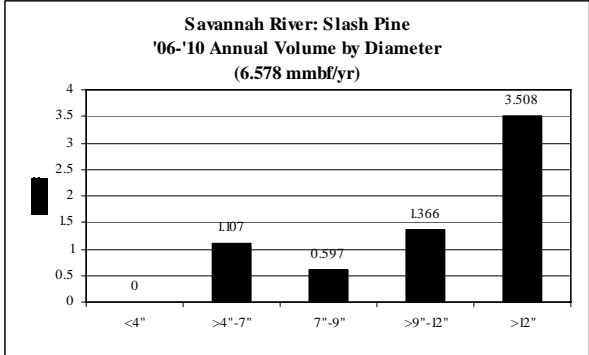
**South Carolina: Slash Pine CROP offering '06 – '10
(by agency)**

ROM # Slash P 1.3

gT = green tons (up to 7" dbh)
S = small log mmbf (>7"-12" dbh)
L = large log mmbf (>12" dbh)

C

Slash Pine Savannah River	5-yr = 32.89 mmbf; 6.578 mmbf/yr
	<ul style="list-style-type: none"> • Level supply from year to year
gT = 33,210	<ul style="list-style-type: none"> • <4" = 0% (0 mmbf) • >4"-7" = 17% (5.535 mmbf)
S = 9.815	<ul style="list-style-type: none"> • >7"-9" = 9% (2.985 mmbf) • >9"-12" = 21% (6.83 mmbf)
L = 17.54	<ul style="list-style-type: none"> • >12" = 53% (17.54 mmbf)

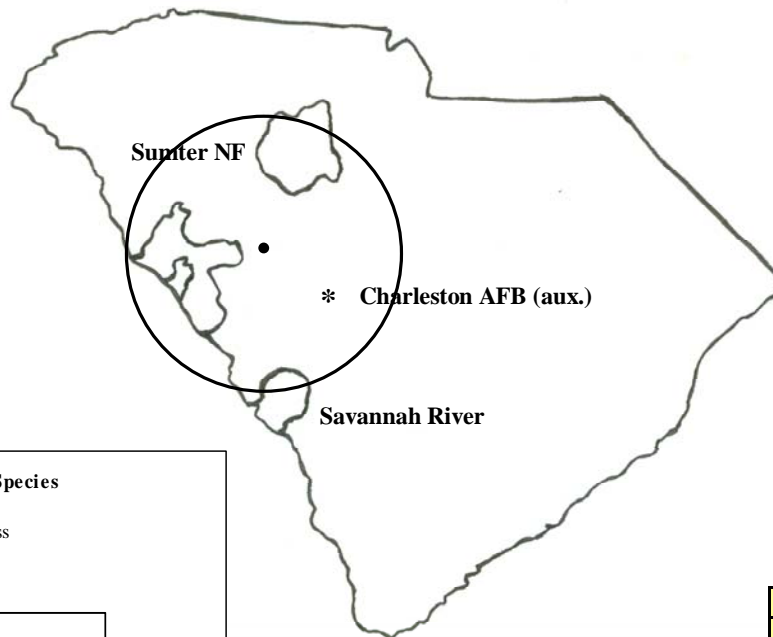


South Carolina 2: Gum Species CROP offering '06 - '10
(gT = 5,100 / S = 2.62 mmbf / L = 1.95 mmbf)

ROM # Gum Sp 1

gT = green tons (up to 7" dbh)
 S = small log mmbf (>7"-12" dbh)
 L = large log mmbf (>12" dbh)

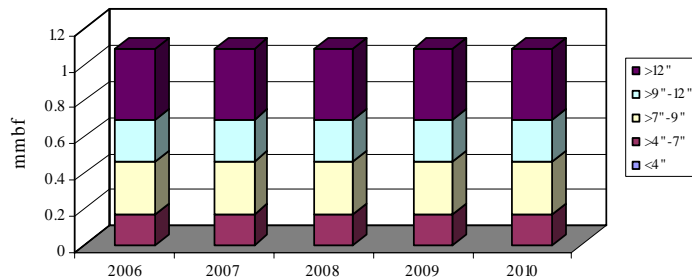
Savannah River: -78%
(gT = 5,100 / S = 1.82 / L = 1.55)



Sumter NF: 1 RD -22%
(gT = 0 / S = .8 / L = .4)

South Carolina 2 - All Agencies: Gum Species
(5-yr total = 5.42 mmbf)

.85 mmbf is <7" = 5,100 gT of biomass
 2.62 mmbf is >7"-12" = small logs
 1.95 mmbf is >12" = large logs



	gT	mmbf	
	Biomass	Small Log	Large Log
2006	1020	0.524	0.39
2007	1020	0.524	0.39
2008	1020	0.524	0.39
2009	1020	0.524	0.39
2010	1020	0.524	0.39
Totals	5100	2.62	1.95
%	16%	48%	36%
mmbf	0.85		

***Gum Species* CROP offering '06 – '10**
(gT = 5,100 / S = 2.62 mmbf / L = 1.95 mmbf)

ROM #Gum Sp 1.1

Gum Sp = gum species

Charleston AFB: *

A Charleston AFB

SC DNR:

B SC DNR

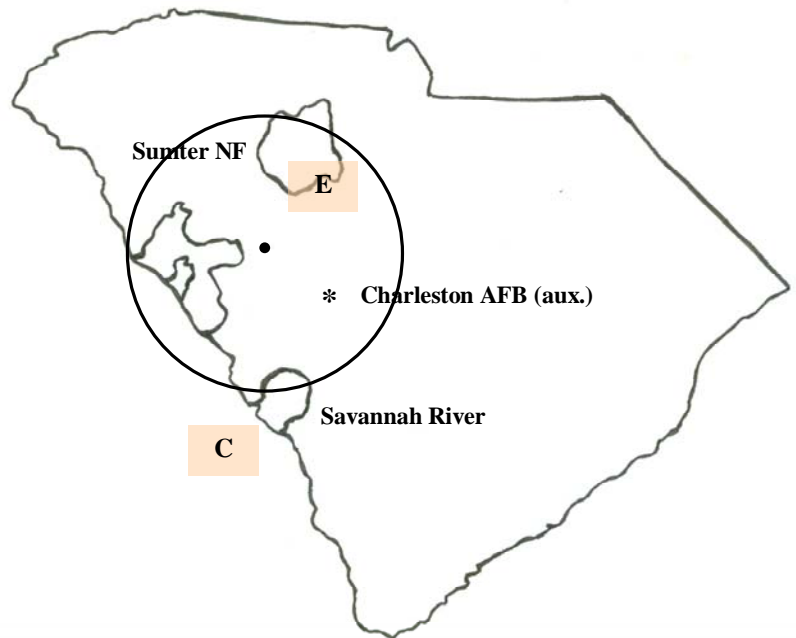
Savannah River:

C *Savannah River*

Sumter NF:

D Long Cane RD

E *Enoree RD*

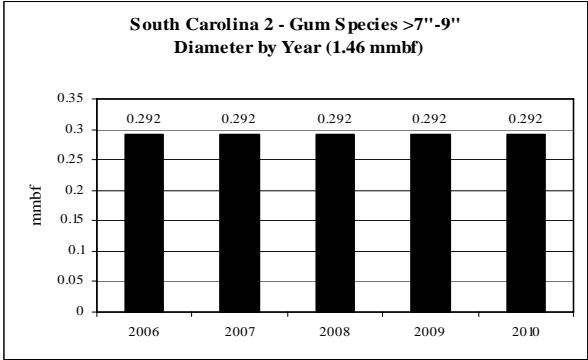
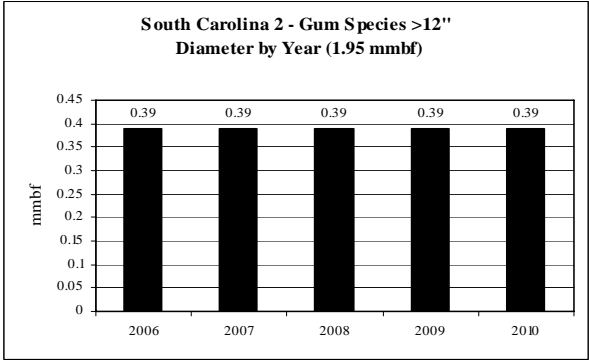
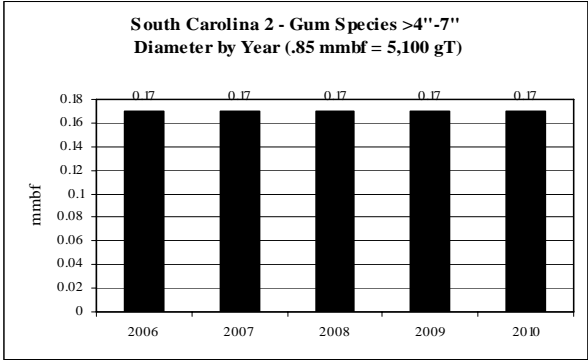


*located in North, SC

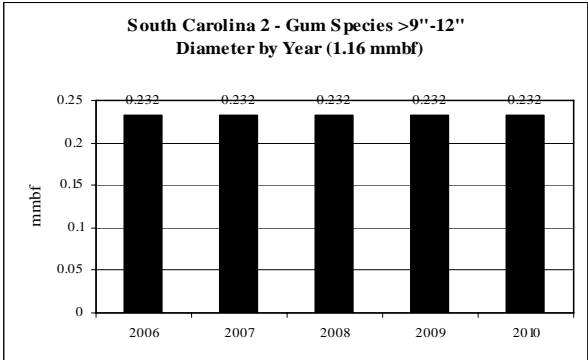
**italics/bold = species offering in CROP

Gum Species: Diameter by Year

ROM # Gum Sp 1.2



No volume for <4" dbh



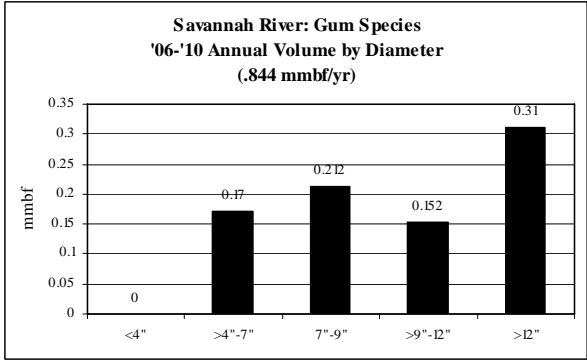
**South Carolina 2: Gum Species CROP offering '06 – '10
(by agency)**

ROM # Gum Sp 1.3

gT = green tons (up to 7" dbh)
S = small log mmbf (>7"-12" dbh)
L = large log mmbf (>12" dbh)

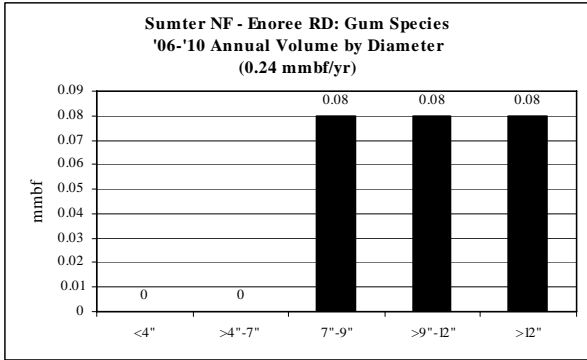
C

Gum Species Savannah River	5-yr = 4.22 mmbf; .844 mmbf/yr
	<ul style="list-style-type: none"> • Level supply from year to year
gT = 5,100	<ul style="list-style-type: none"> • <4" = 0% (0 mmbf) • >4"-7" = 20% (.85 mmbf)
S = 1.82	<ul style="list-style-type: none"> • >7"-9" = 25% (1.06 mmbf) • >9"-12" = 18% (.76 mmbf)
L = 1.55	<ul style="list-style-type: none"> • >12" = 37% (1.55 mmbf)



E

Gum Species Sumter NF: Enoree RD	5-yr = 1.2 mmbf; .24 mmbf/yr
	<ul style="list-style-type: none"> • Level supply from year to year
gT = 0	<ul style="list-style-type: none"> • <4" = 0% (0 mmbf) • >4"-7" = 0% (0 mmbf)
S = .8	<ul style="list-style-type: none"> • >7"-9" = 33% (.4 mmbf) • >9"-12" = 33% (.4 mmbf)
L = .4	<ul style="list-style-type: none"> • >12" = 33% (.4 mmbf)



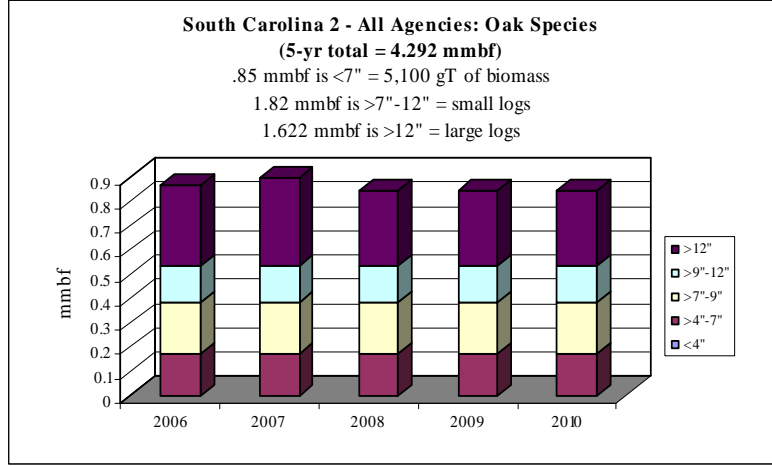
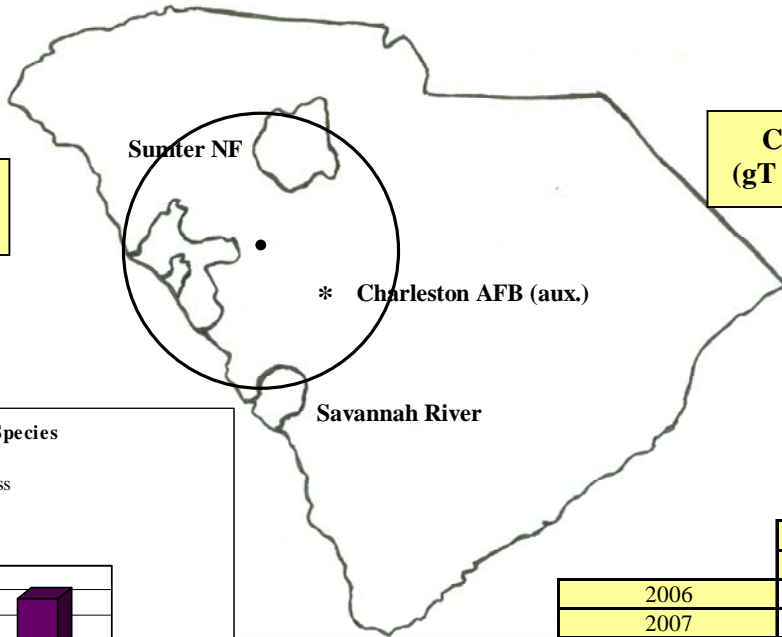
South Carolina 2: Oak Species CROP offering '06 – '10
(gT = 5,100 / S = 1.82 mmbf / L = 1.62 mmbf)

ROM # Oak Sp 1

gT = green tons (up to 7" dbh)
 S = small log mmbf (>7"-12" dbh)
 L = large log mmbf (>12" dbh)

Savannah River: 98%
(gT = 5,100 / S = 1.82 / L = 1.55)

Charleston AFB: 2%
(gT = 0 / S = 0 / L = .0725)



	gT	mmbf	
	Biomass	Small Log	Large Log
2006	1020	0.364	0.33
2007	1020	0.364	0.3625
2008	1020	0.364	0.31
2009	1020	0.364	0.31
2010	1020	0.364	0.31
Totals	5100	1.82	1.6225
%	20%	42%	38%
mmbf	0.85		

South Carolina 2: *Oak Species* CROP offering '06 – '10
(gT = 5,100 / S = 1.82 mmbf / L = 1.62 mmbf)

ROM # Oak Sp 1.1

Oak Sp= oak species

Charleston AFB: *

A *Charleston AFB*

SC DNR:

B SC DNR

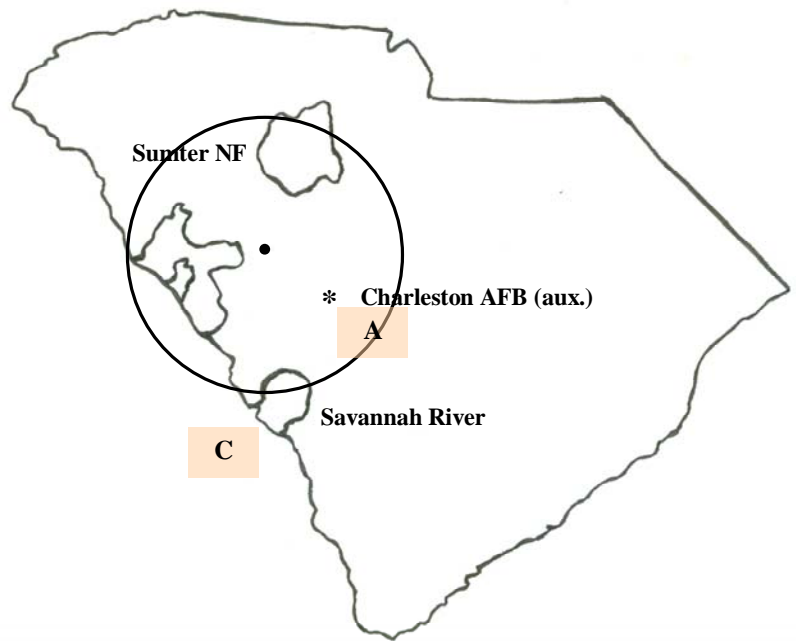
Savannah River:

C *Savannah River*

Sumter NF:

D Long Cane RD

E Enoree RD

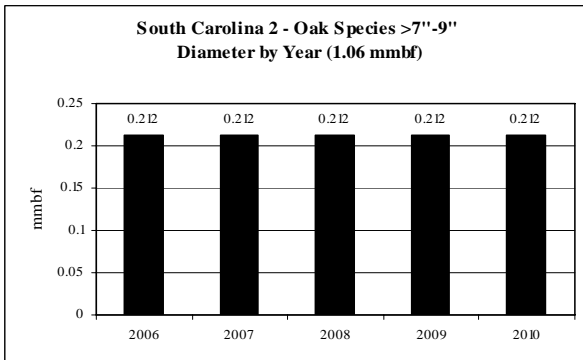
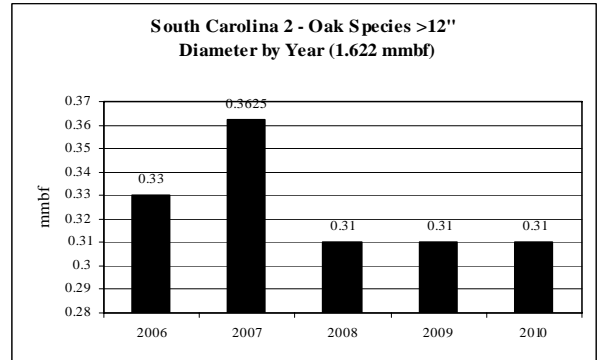
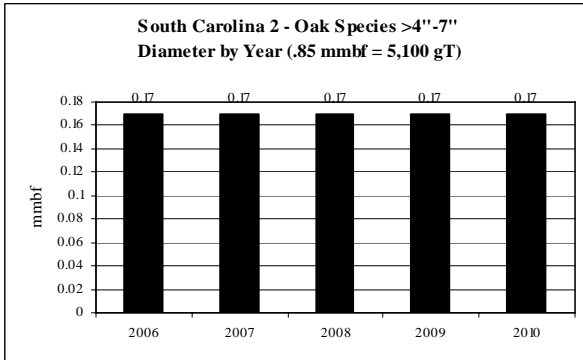


*located in North, SC

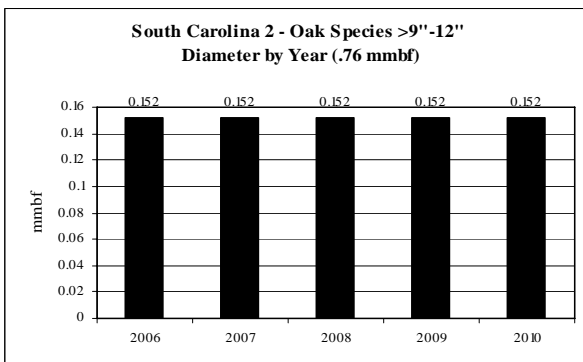
**italics/bold = species offering in CROP

Oak Species: Diameter by Year

ROM # Oak Sp 1.2



No volume for <4" dbh



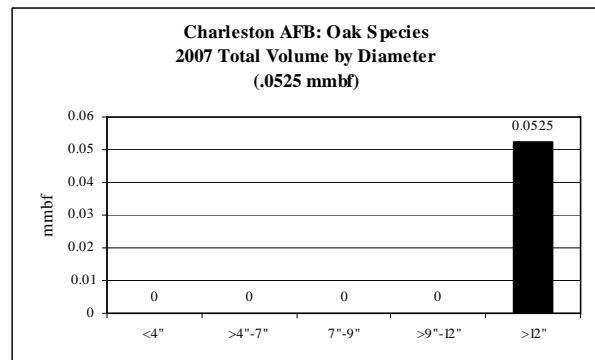
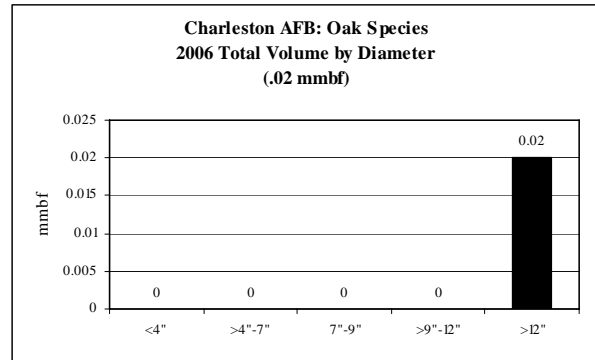
**South Carolina 2: Oak Species CROP offering '06 – '10
(by agency)**

ROM # Oak Sp 1.3

gT = green tons (up to 7" dbh)
S = small log mmbf (>7"-12" dbh)
L = large log mmbf (>12" dbh)

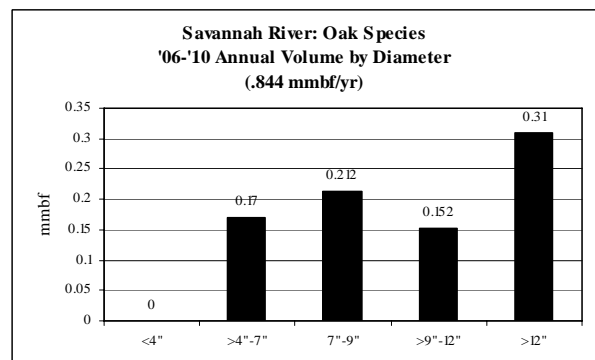
A

Oak Species Charleston AFB: (North, SC)	5-yr = .0725 mmbf
	<ul style="list-style-type: none"> • Only offered in '06 & '07
gT = 0	<ul style="list-style-type: none"> • <4" = 0% (0 mmbf) • >4"-7" = 0% (0 mmbf)
S = 0	<ul style="list-style-type: none"> • >7"-9" = 0% (0 mmbf) • >9"-12" = 0% (0 mmbf)
L = .0725	<ul style="list-style-type: none"> • >12" = 100% (.0725 mmbf)



C

Oak Species Savannah River	5-yr = 4.22 mmbf; .844 mmbf/yr
	<ul style="list-style-type: none"> • Level supply from year to year
gT = 5,100	<ul style="list-style-type: none"> • <4" = 0% (0 mmbf) • >4"-7" = 20% (.85 mmbf)
S = 1.82	<ul style="list-style-type: none"> • >7"-9" = 25% (1.06 mmbf) • >9"-12" = 18% (.76 mmbf)
L = 1.55	<ul style="list-style-type: none"> • >12" = 37% (1.55 mmbf)



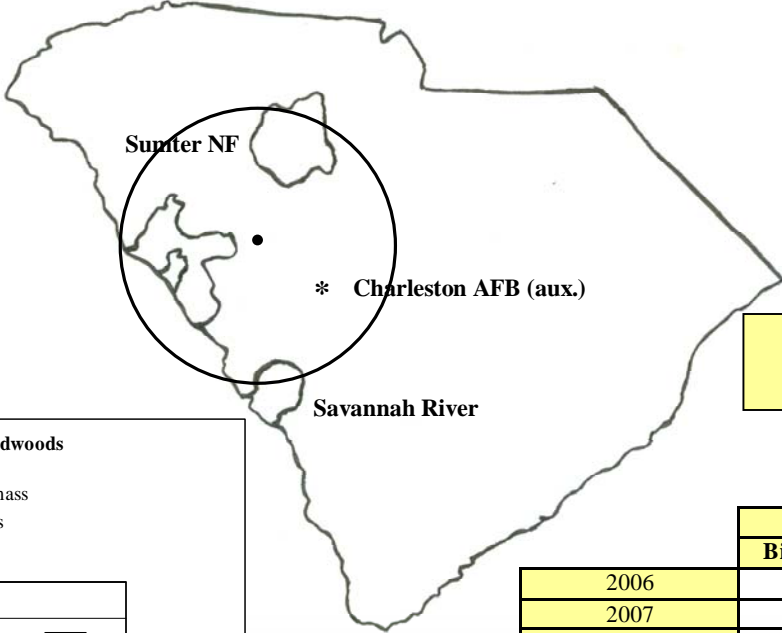
South Carolina 2: Hardwoods CROP offering '06 – '10
(gT = 2,550 / S = 1.11 mmbf / L = .906 mmbf)

ROM # HWD 1

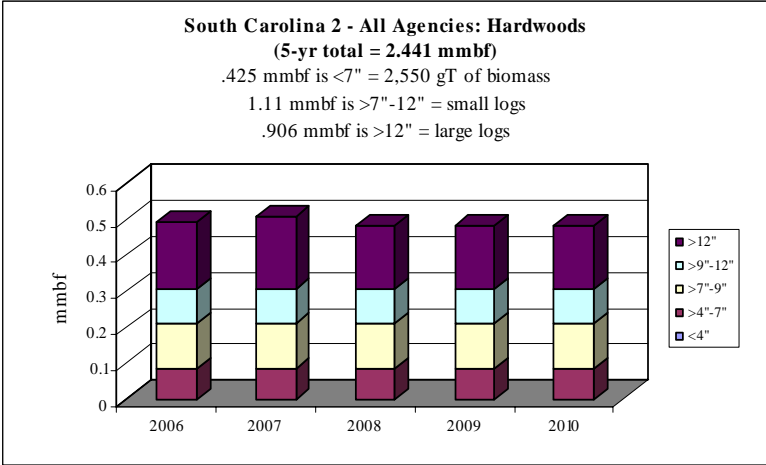
gT = green tons (up to 7" dbh)
 S = small log mmbf (>7"-12" dbh)
 L = large log mmbf (>12" dbh)

Savannah River: – 86%
(gT = 2,550 / S = .91 / L = .775)

Charleston AFB: – 1%
(gT = 0 / S = 0 / L = .0311)



Sumter NF: 1 RD – 12%
(gT = 0 / S = .2 / L = .1)



	gT	mmbf	
	Biomass	Small Log	Large Log
2006	510	0.222	0.183571429
2007	510	0.222	0.1975
2008	510	0.222	0.175
2009	510	0.222	0.175
2010	510	0.222	0.175
Totals	2550	1.11	0.906071429
%	17%	45%	37%
mmbf	0.425		

South Carolina 2: *Hardwoods* CROP offering '06 – '10
(gT = 2,550 / S = 1.11 mmbf / L = .906 mmbf)

ROM # HWD 1.1

HWD= *hardwoods*

Charleston AFB: *

A *Charleston AFB*

SC DNR:

B SC DNR

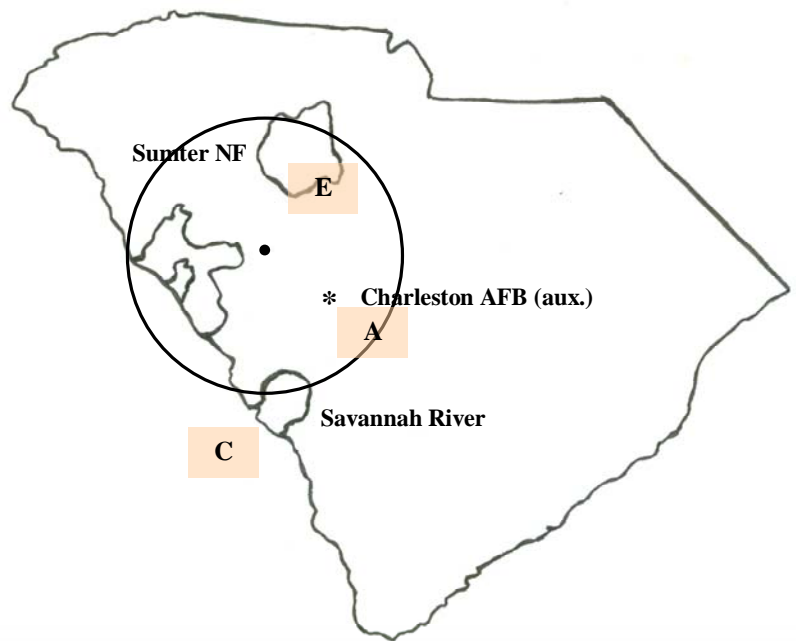
Savannah River:

C *Savannah River*

Sumter NF:

D Long Cane RD

E *Enoree RD*

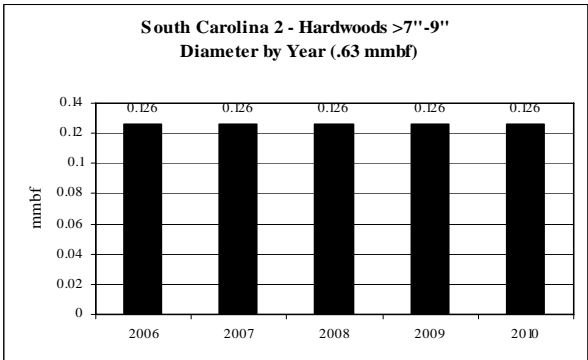
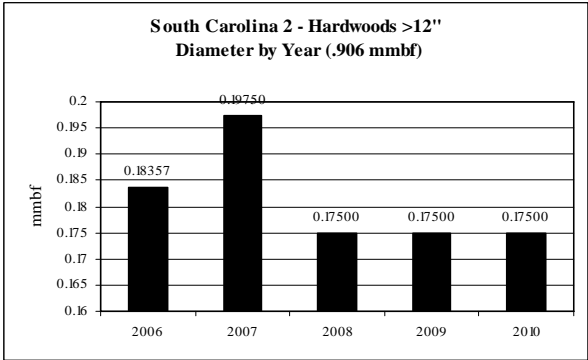
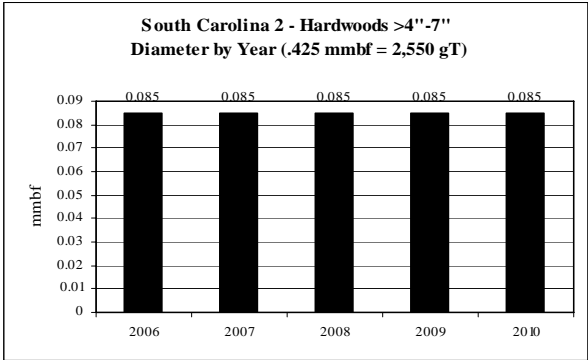


*located in North, SC

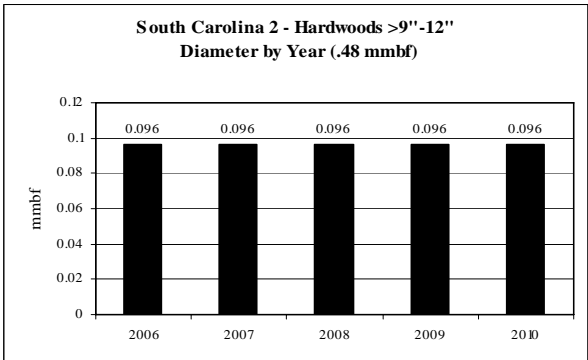
**italics/bold = species offering in CROP

Hardwoods: Diameter by Year

ROM # HWD 1.2



No volume for <4" dbh



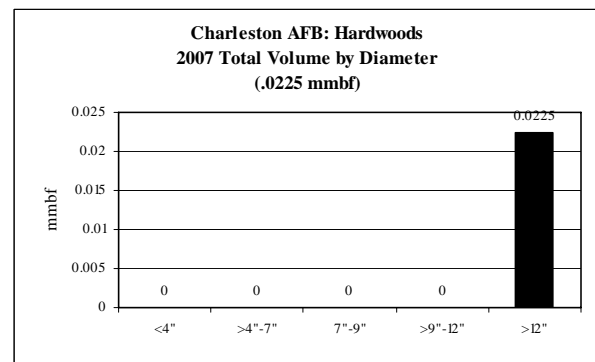
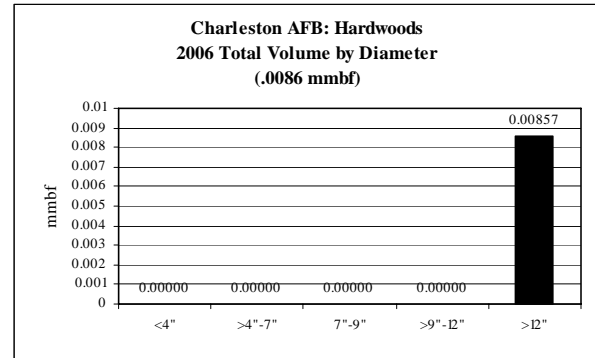
**South Carolina 2: Hardwoods CROP offering '06 – '10
(by agency)**

ROM # HWD 1.3

gT = green tons (up to 7" dbh)
S = small log mmbf (>7"-12" dbh)
L = large log mmbf (>12" dbh)

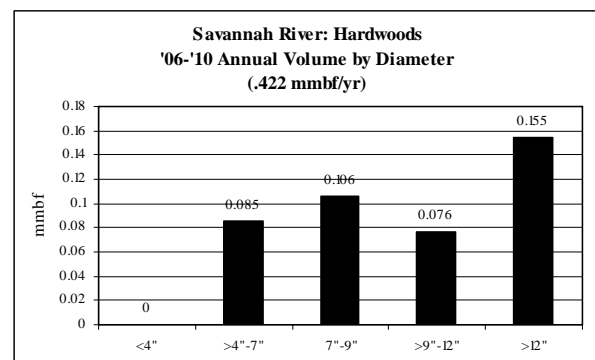
A

Hardwoods Charleston AFB: (North, SC)	5-yr = .0311 mmbf
	<ul style="list-style-type: none"> • Only offered in '06 & '07
gT = 0	<ul style="list-style-type: none"> • <4" = 0% (0 mmbf) • >4"-7" = 0% (0 mmbf)
S = 0	<ul style="list-style-type: none"> • >7"-9" = 0% (0 mmbf) • >9"-12" = 0% (0 mmbf)
L = .0311	<ul style="list-style-type: none"> • >12" = 100% (.0311 mmbf)



C

Hardwoods Savannah River	5-yr = 2.11 mmbf; .422 mmbf/yr
	<ul style="list-style-type: none"> • Level supply from year to year
gT = 2,550	<ul style="list-style-type: none"> • <4" = 0% (0 mmbf) • >4"-7" = 20% (.425 mmbf)
S = .91	<ul style="list-style-type: none"> • >7"-9" = 25% (.53 mmbf) • >9"-12" = 18% (.38 mmbf)
L = .775	<ul style="list-style-type: none"> • >12" = 37% (.775 mmbf)



**South Carolina 2: Hardwoods CROP offering '06 – '10
(by agency)**

ROM # HWD 1.4

gT = green tons (up to 7" dbh)
S = small log mmbf (>7"-12" dbh)
L = large log mmbf (>12" dbh)

E

Hardwoods Sumter NF: Enoree RD	5-yr = .3 mmbf; .06 mmbf/yr
	<ul style="list-style-type: none"> • Level supply from year to year
gT = 0	<ul style="list-style-type: none"> • <4" = 0% (0 mmbf) • >4"-7" = 0% (0 mmbf)
S = .2	<ul style="list-style-type: none"> • >7"-9" = 33% (.1 mmbf) • >9"-12" = 33% (.1 mmbf)
L = .1	<ul style="list-style-type: none"> • >12" = 33% (.1 mmbf)

