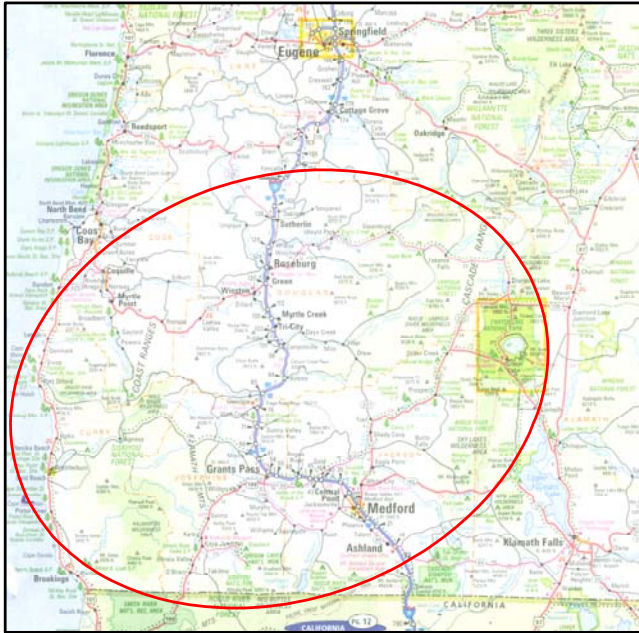


**Cow Creek CROP**  
**A Summary of CROP Landscape Analyses Results**  
**(2007 – 2011)**



**Cow Creek CROP:**  
**Center Point:**  
**Myrtle Creek**  
**(40 miles N; 70 miles S;**  
**60 miles E; 80 miles W)**

- 2 National Forests
- 8 Ranger Districts
- 4 BLM Districts
- 3 Counties
- State Lands
- Private Lands

gT = green tons (up to 7" dbh)  
 S = small log mmbf (>7"-12" dbh)  
 L = large log mmbf (>12" dbh)

<i>By Species*</i>	<b>5-yr total (Biomass = gT)</b>	<b>5-yr total Small log (mmbf)</b>	<b>5-yr total Large log (mmbf)</b>
<b>Douglas fir</b> (81% of 5-yr. total)	792,115.47	529.3	604.83
<b>White fir</b> (4% of 5-yr. total)	52,856.8	25.64	30.46
<b>Western hemlock</b> (3% of 5-yr. total)	5,844	25.09	20.16
<b>Madrone</b> (3% of 5-yr. total)	124,692	9.84	6.02
<b>Pine species</b> (2% of 5-yr. total)	40,764	8.2	11.579
<b>Ponderosa pine</b> (1% of 5-yr. total)	45,623	6.41	5.171
<b>Red Alder</b> (1% of 5-yr. total)	876	6.42	5.73
<b>Sitka spruce</b> (1% of 5-yr. total)	2,812.5	3.93	7.68
<b>Incense cedar</b> (1% of 5-yr. total)	13,629	3.01	3.0
<b>Tanoak</b> (1% of 5-yr. total)	50,673	6.17	4.35
<b>Chinkapin</b> (1% of 5-yr. total)	27,537.87	1.961	1.779

*\*22 species analyzed in CROP, but only half comprise 99% of the total 5-yr volume*

**Rogue River/Siskiyou NF:** (gT= 227,450; Small log = 75 mmbf; Large log = 175 mmbf)

Ranger Districts	5-yr total (Biomass = gT)	5-yr total Small log (mmbf)	5-yr total Large log (mmbf)
Cascade Zone (Prospect/Butte Falls)	58,750	26.4	61.6
Siskiyou Zone (Ashland/Applegate)	50,250	9.3	21.7
Two Rivers Zone (Galice/Illinois Valley)	47,750	7.5	17.5
Pacific Zone (Chetco/Gold Beach)	51,950	22.5	52.5
Power	18,750	9.3	21.7

**Umpqua NF:** (gT= 28,706; Small log = 50.05 mmbf; Large log = 85.48 mmbf)

Ranger Districts	5-yr total (Biomass = gT)	5-yr total Small log (mmbf)	5-yr total Large log (mmbf)
Diamond Lake	5,485	18.84	21
North Umpqua	8,301.44	15.74	11.08
Tiller	14,920	15.46	53.4

**OR BLM:** (gT= 894,300; Small log = 457.84 mmbf; Large log = 320.14 mmbf)

Field Offices	5-yr total (Biomass = gT)	5-yr total Small log (mmbf)	5-yr total Large log (mmbf)
Eugene	3,000	3.5	1
Coos Bay	3,000	149.62	49.87
Roseburg	23,000	128.08	58.46
Medford	865,300	176.63	210.80

OR Counties: (gT= 11,250; Small log = 20.91 mmbf; Large log = 44.98 mmbf)

Counties	5-yr total (Biomass = gT)	5-yr total Small log (mmbf)	5-yr total Large log (mmbf)
Douglas	0	0	7.5
Coos	11,250	15.75	27
Josephine	0	5.16	10.48

OR Agencies: (gT= 18,790.7; Small log = 33.82 mmbf; Large log = 87.78 mmbf)

Agency	5-yr total (Biomass = gT)	5-yr total Small log (mmbf)	5-yr total Large log (mmbf)
ODOT	0	0	.0975
DSL	18,228.25	32.81	85.06
ODF	562.5	1.012	2.625

**Cow Creek: All Agencies CROP offering/removal '07- '11**  
**(gT = 1,180,497 / S = 637.63 mmbf / L = 713.4 mmbf)**  
**(1,587 mmbf total 5-yr volume)**

**ODOT: (.0975 mmbf) <1%**  
**(gT = 0 / S = 0 / L = .097)**

**OR-Counties: (68.154 mmbf) 4%**  
**(gT = 11,250 / S = 20.916 / L = 44.988)**

**DSL: (121.52 mmbf) 8%**  
**(gT = 18,228 / S = 32.811 / L = 85.065)**

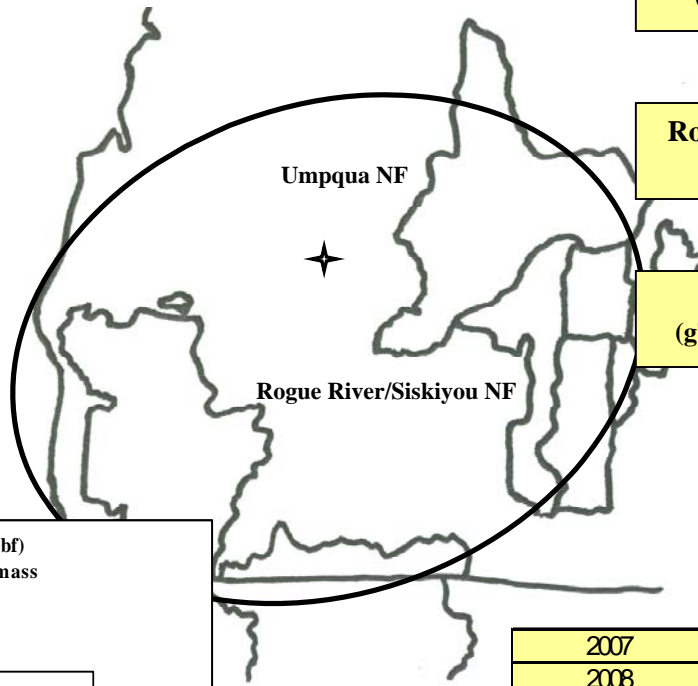
**OR-BLM: (956.844 mmbf) 60%**  
**(gT = 894,300 / S = 457.84 / L = 320.144)**

gT = green tons (up to <7" dbh)  
 S = small log mmbf (>7"-12" dbh)  
 L = large log mmbf (>12" dbh)

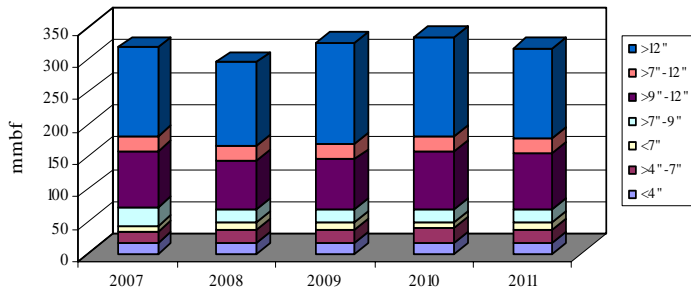
**Umpqua NF: (141.279 mmbf) 9%**  
**(gT = 28,706 / S = 50.054 / L = 85.484)**

**Rogue River-Siskiyou NF: (295.49 mmbf) 19%**  
**(gT = 227,450 / S = 75 / L = 175)**

**ODF: (3.75 mmbf) <1%**  
**(gT = 562 / S = 1.012 / L = 2.625)**



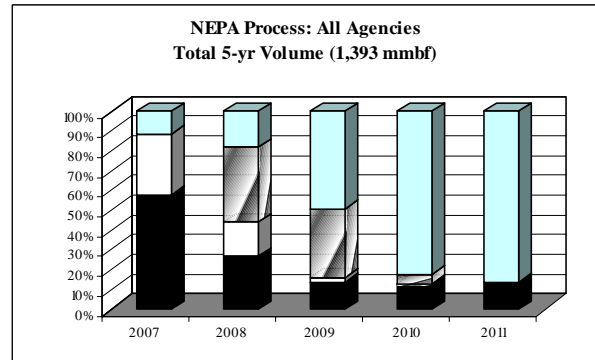
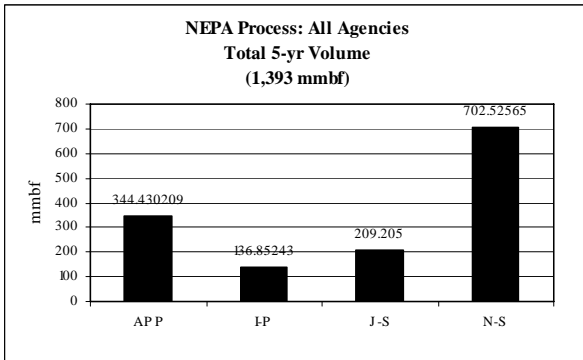
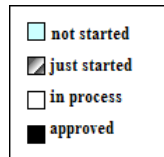
**All Agencies: (5-yr total = 1,587.136 mmbf)**  
**236.099 mmbf is <7" = 1,180,497 gT of biomass**  
**637.63 mmbf is >7"-12" = small logs**  
**713.4 mmbf is >12" = large logs**



	gT	mmbf	
	Biomass	Small Log	Large Log
2007	217891.2	137.1258613	137.1032197
2008	240068.275	119.1588613	127.4292197
2009	236526.145	120.7368613	156.9502197
2010	245813.55	130.7618613	153.0782197
2011	240198.15	129.8498613	138.8432197
Totals	1180497.32	637.633065	713.404985
%	15%	40%	45%
mmbf	236.099464		<b>1587.136869</b>

NEPA Process – All Agencies: Total 5-yr volume (1,393 mmbf; includes gT as mmbf)

	<i>mmbf</i>	<i>% of total</i>
<b>Approved</b>	<b>344.43</b>	<b>25%</b>
<b>In process</b>	<b>136.85</b>	<b>10%</b>
<b>Just started</b>	<b>209.2</b>	<b>15%</b>
<b>Not started</b>	<b>703.12</b>	<b>50%</b>



**Cow Creek: All Agencies CROP offering/removal '07- '11**  
**(gT = 1,180,497 / S = 637.63 mmbf / L = 713.4 mmbf)**  
**(1,587 mmbf total 5-yr volume)**

**Rogue River-Siskiyou NF:**

- A Cascade Zone: Prospect/Butte Falls RDs (99.75 mmbf)
- B Siskiyou Zone: Ashland/Applegate RDs (41.05 mmbf)
- C Two Rivers Zone: Galice/Illinois Valley RDs (34.55 mmbf)
- D Pacific Zone: Chetco/Gold Beach RDs (85.39 mmbf)
- E Powers RD (34.75 mmbf)

**Umpqua NF:**

- F Diamond Lake RD (40.942 mmbf)
- G North Umpqua RD (28.485 mmbf)
- H Tiller RD (71.852 mmbf)

**OR-BLM (FO = field office):**

- I Eugene FO (5.1 mmbf)
- J Coos Bay FO (200.1 mmbf)
- K Roseburg FO (191.15 mmbf)
- L Medford FO (560.494 mmbf)

**Division of State Lands (DSL):**

- M DSL (121.522 mmbf)

**OR-Counties:**

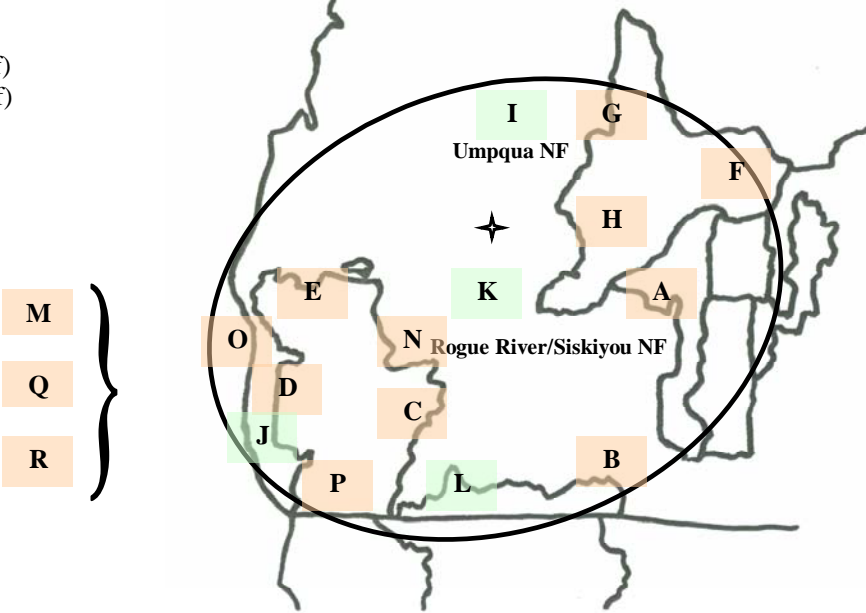
- N Douglas Co. (7.5 mmbf)
- O Coos Co. (45 mmbf)
- P Josephine Co. (15.654 mmbf)

**Oregon Department of Forestry (ODF):**

- Q ODF (3.75 mmbf)

**Oregon Dept. of Transportation (ODOT):**

- R ODOT (.0975 mmbf)



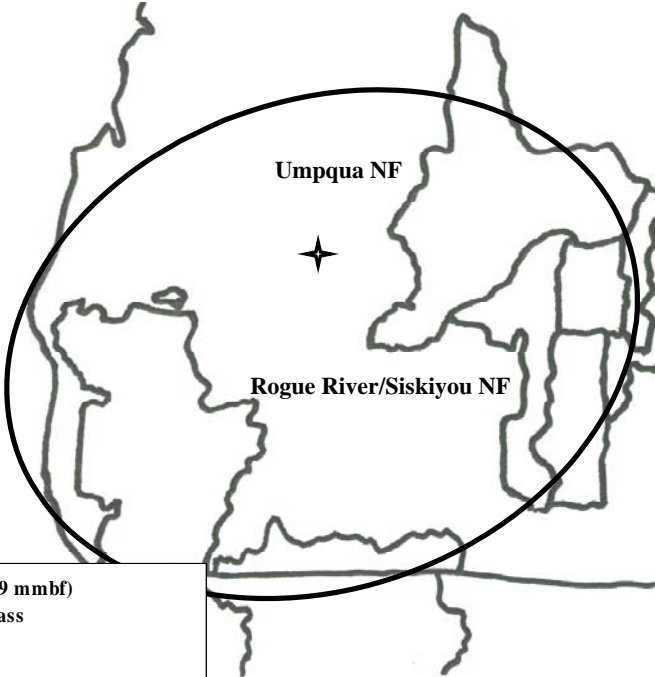
**Cow Creek: Douglas Fir CROP offering/removal '07 – '11**  
**(gT = 792,115 / S = 529.305 mmbf / L = 604.83 mmbf)**

gT = green tons (up to <7" dbh)  
 S = small log mmbf (>7"-12" dbh)  
 L = large log mmbf (>12" dbh)

**ODOT: <1%**  
**(gT = 0 / S = 0 / L = .02925)**

**OR-Counties: 3 Counties 3%**  
**(gT = 5,625 / S = 12.78 / L = 29.089)**

**DSL: 8%**  
**(gT = 16,510 / S = 29.709 / L = 77.05)**

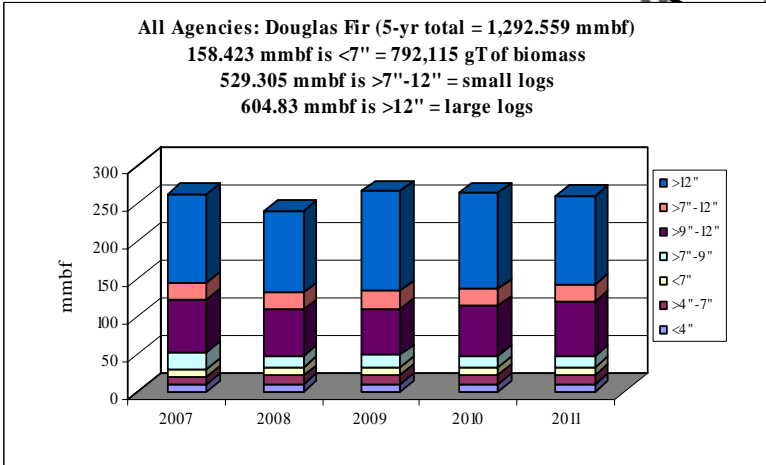


**Umpqua NF: 3 RDs 8%**  
**(gT = 16,846 / S = 32.33 / L = 69.45)**

**Rogue River-Siskiyou NF: 5 RDs 23%**  
**(gT = 227,450 / S = 75 / L = 175)**

**ODF: <1%**  
**(gT = 506 / S = .911 / L = 2.362)**

**OR-BLM: 4 FOs 57%**  
**(gT = 525,177 / S = 378.56 / L = 251.85)**



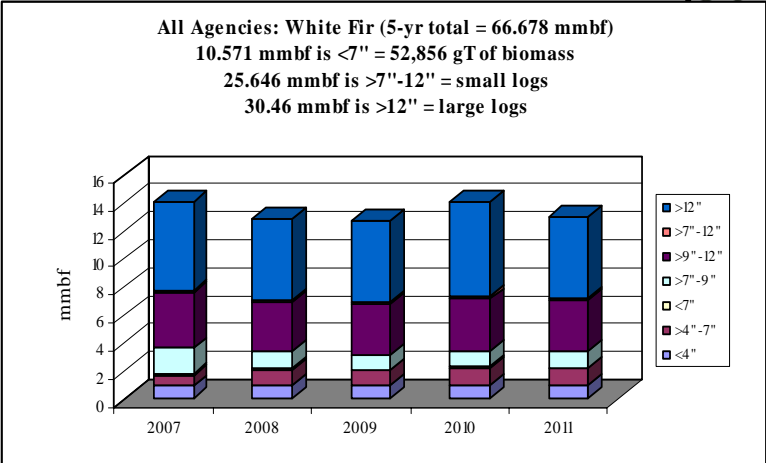
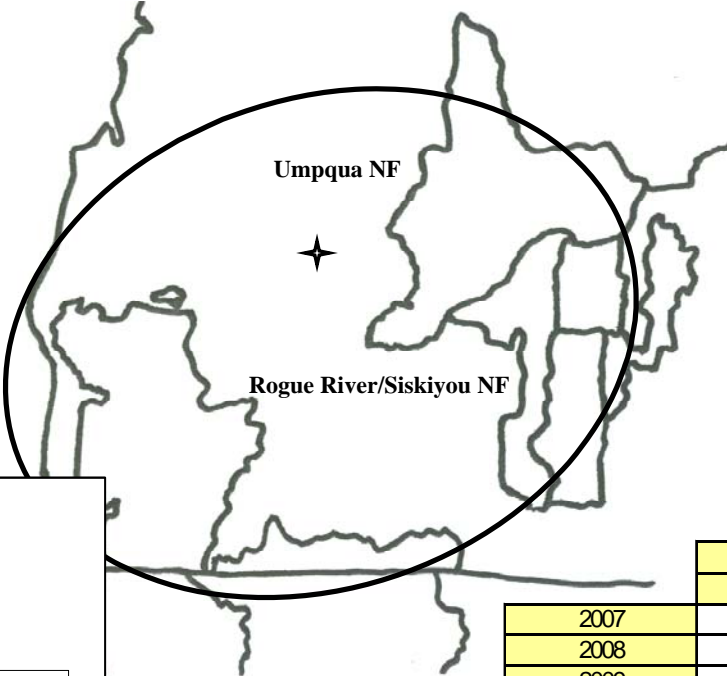
	gT	mmbf	
	Biomass	Small Log	Large Log
2007	151215.205	115.4036448	116.3199892
2008	158076.38	99.33839479	108.8486692
2009	159659.255	101.4722448	133.4465192
2010	162557.78	103.6200948	127.9324692
2011	160606.855	109.4710948	118.2826692
<b>Totals</b>	<b>792115.475</b>	<b>529.3054739</b>	<b>604.8303161</b>
%	12%	41%	47%
<b>mmbf</b>	<b>158.423095</b>		

**1292.558885**

**Cow Creek: White Fir CROP offering/removal '07 – '11**  
**(gT = 52,856 / S = 25.646 mmbf / L = 30.46 mmbf)**

gT = green tons (up to <7" dbh)  
 S = small log mmbf (>7"-12" dbh)  
 L = large log mmbf (>12" dbh)

**OR-BLM: 2 FO 100%**  
**(gT =52,856 / S = 25.646 / L = 30.46)**



	gT	mmbf	
	Biomass	Small Log	Large Log
2007	8953.8	5.92506	6.35704
2008	10818.95	4.94006	5.77865
2009	10522.8	4.79726	5.77485
2010	11371.45	5.01196	6.80125
2011	11189.8	4.97196	5.74865
Totals	52856.8	25.6463	30.46044
%	16%	38%	46%
mmbf	10.57136		

**66.6781**



**Cow Creek: Western Hemlock CROP offering/removal '07 – '11**  
**(gT = 5,844 / S = 25.098 mmbf / L = 20.16 mmbf)**

gT = green tons (up to <7" dbh)  
 S = small log mmbf (>7"-12" dbh)  
 L = large log mmbf (>12" dbh)

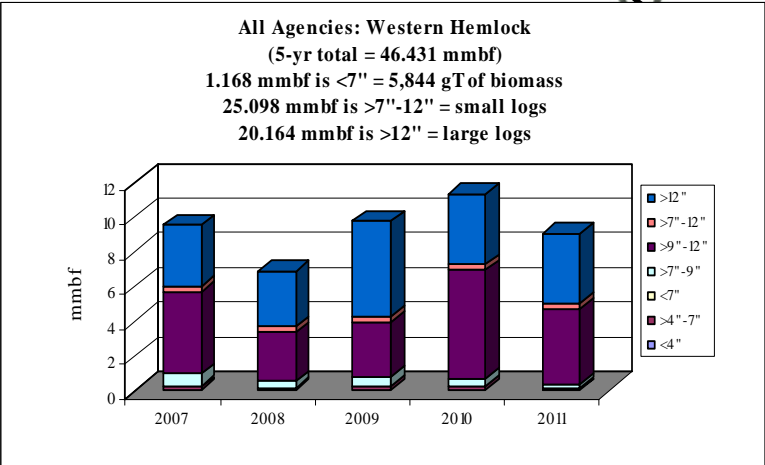
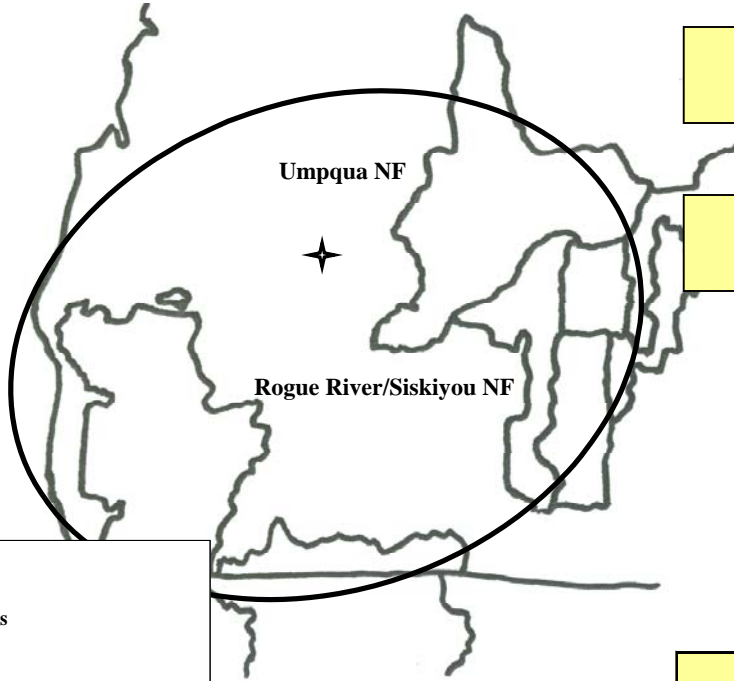
**OR-Counties: 2 Counties 21%**  
 (gT = 2,250 / S = 3.15 / L = 6.34)

**Umpqua NF: 3 RDs 27%**  
 (gT = 2,247 / S = 6.79 / L = 5.13)

**DSL: 13%**  
 (gT = 869 / S = 1.56 / L = 4.05)

**OR-BLM: 1 Field Office 39%**  
 (gT = 450 / S = 13.54 / L = 4.51)

**ODF: <1%**  
 (gT = 28 / S = .05 / L = .13)



	gT	mmbf	
	Biomass	Small Log	Large Log
2007	1360.525	5.7179605	3.536805
2008	956.925	3.4957105	3.194055
2009	1399.075	4.0144605	5.423305
2010	1405.925	6.9569605	4.052805
2011	721.925	4.9129605	3.957305
Totals	5844.375	25.0980525	20.164275
%	3%	54%	43%
mmbf	1.168875		

46.4312025

**Cow Creek: Red Alder CROP offering/removal '07 – '11**  
**(gT = 876 / S = 6.426 mmbf / L = 5.736 mmbf)**

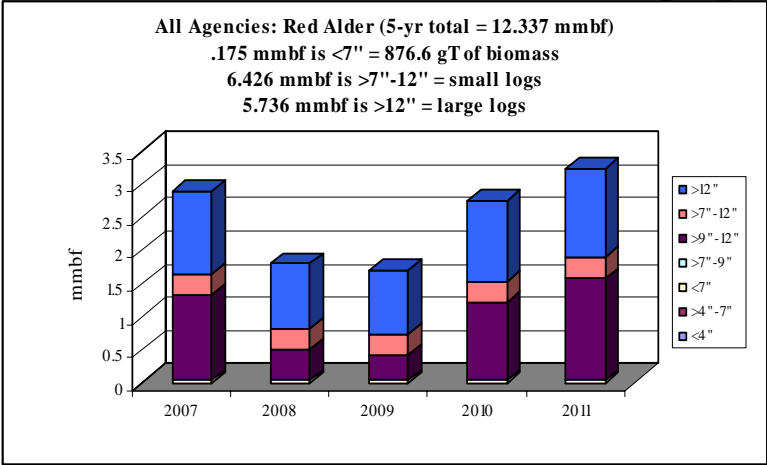
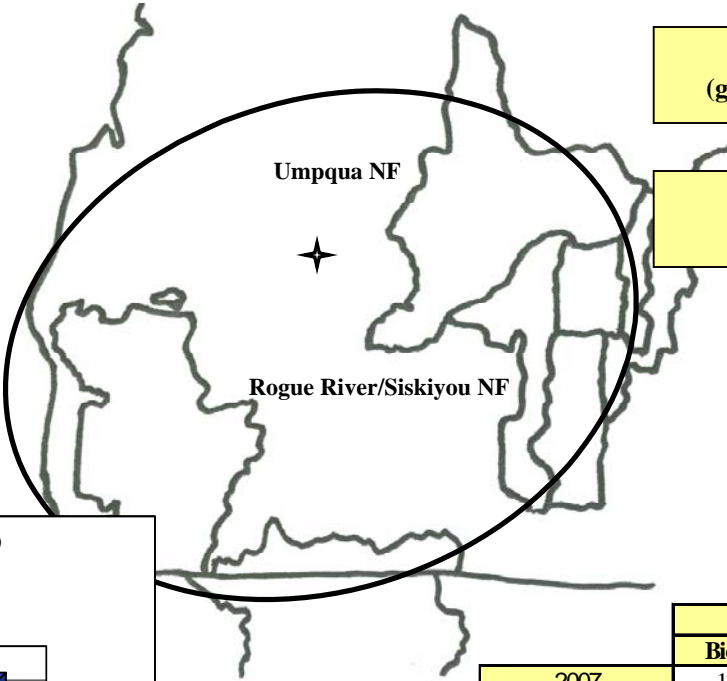
gT = green tons (up to <7" dbh)  
 S = small log mmbf (>7"-12" dbh)  
 L = large log mmbf (>12" dbh)

**ODOT: <1%**  
 (gT = 0 / S = 0 / L = .0292)

**ODF: 2%**  
 (gT = 28 / S = .0506 / L = .131)

**DSL: 46%**  
 (gT = 848.475 / S = 1.53 / L = 3.96)

**OR-BLM: 1 FO 52%**  
 (gT = 0 / S = 4.848 / L = 1.616)



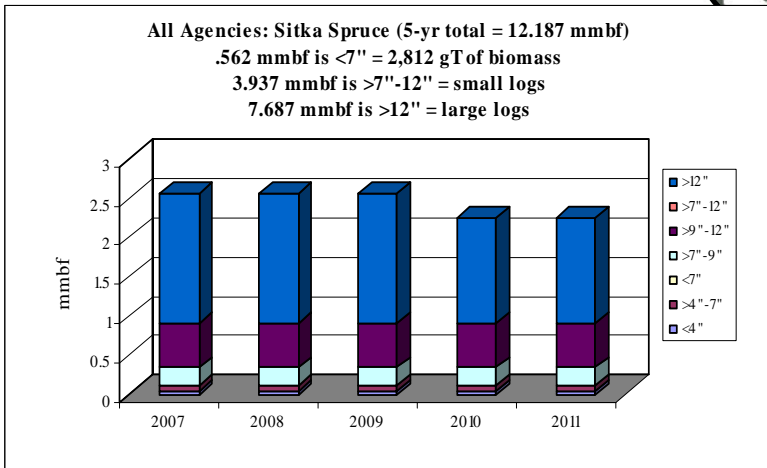
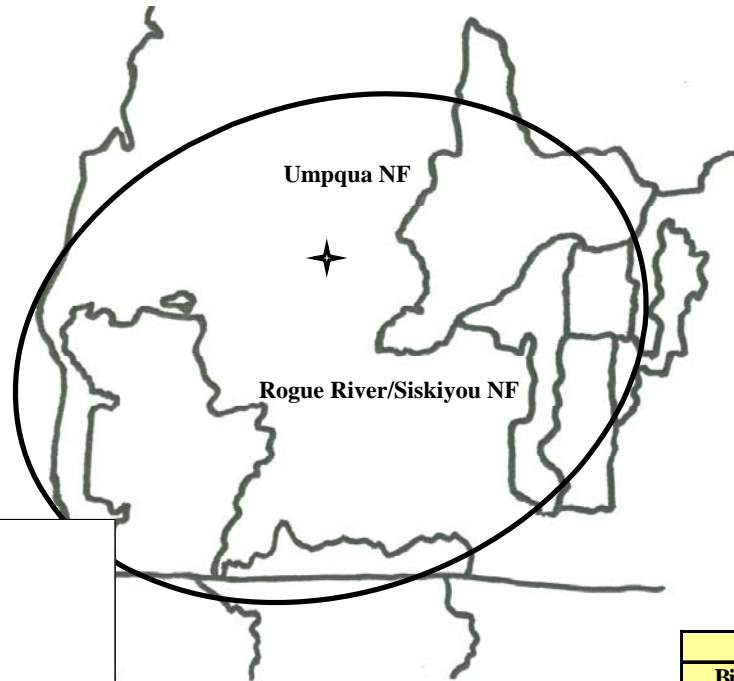
	gT	mmbf	
	Biomass	Small Log	Large Log
2007	175.32	1.605576	1.25401
2008	175.32	0.780576	0.97901
2009	175.32	0.696576	0.95101
2010	175.32	1.497576	1.21801
2011	175.32	1.845576	1.33401
Totals	876.6	6.42588	5.73605
%	1%	52%	46%
mmbf	0.17532		

**12.33725**

**Cow Creek: Sitka Spruce CROP offering/removal '07 – '11  
(gT = 2,812 / S = 3.937 mmbf / L = 7.687 mmbf)**

gT = green tons (up to <7" dbh)  
S = small log mmbf (>7"-12" dbh)  
L = large log mmbf (>12" dbh)

**OR-Counties: 2 Counties 100%  
(gT = 2,812 / S = 3.937 / L = 7.687)**



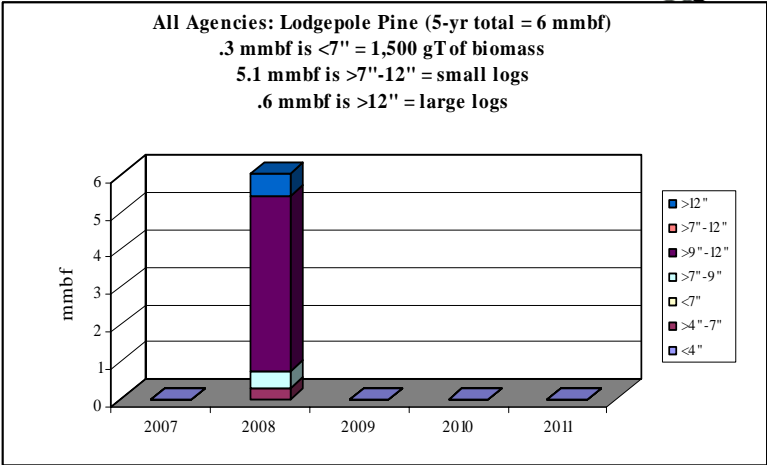
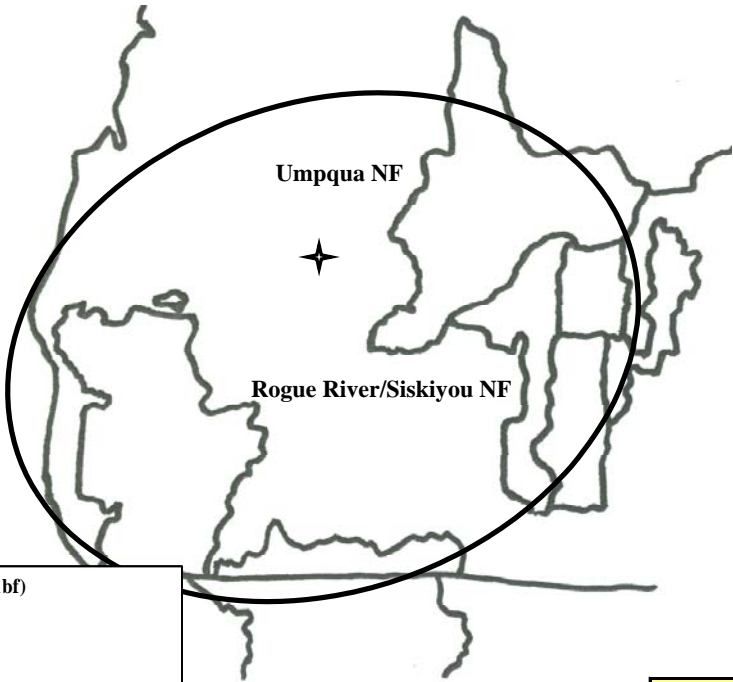
	gT	mmbf	
	Biomass	Small Log	Large Log
2007	562.5	0.7875	1.6625
2008	562.5	0.7875	1.6625
2009	562.5	0.7875	1.6625
2010	562.5	0.7875	1.35
2011	562.5	0.7875	1.35
Totals	2812.5	3.9375	7.6875
%	5%	32%	63%
mmbf	0.5625		

12.1875

**Cow Creek: Lodgepole Pine CROP offering/removal '07 – '11  
(gT = 1,500 / S = 5.1 mmbf / L = .6 mmbf)**

gT = green tons (up to <7" dbh)  
S = small log mmbf (>7"-12" dbh)  
L = large log mmbf (>12" dbh)

**Umpqua NF: 1 RD 100%  
(gT = 1,500 / S = 5.1 / L = .6)**

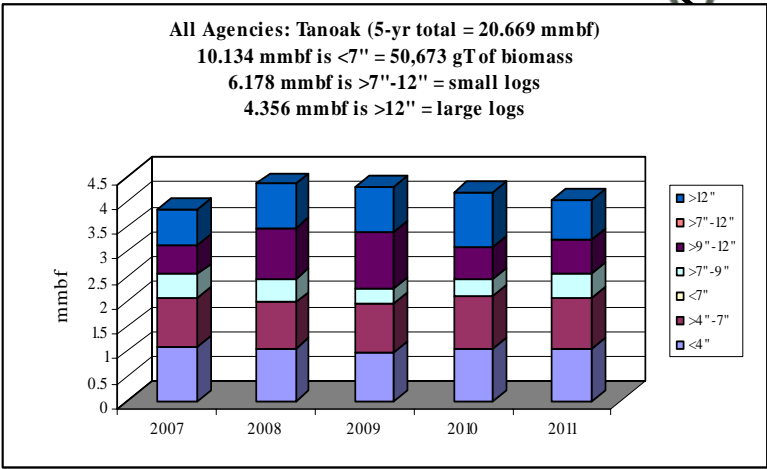
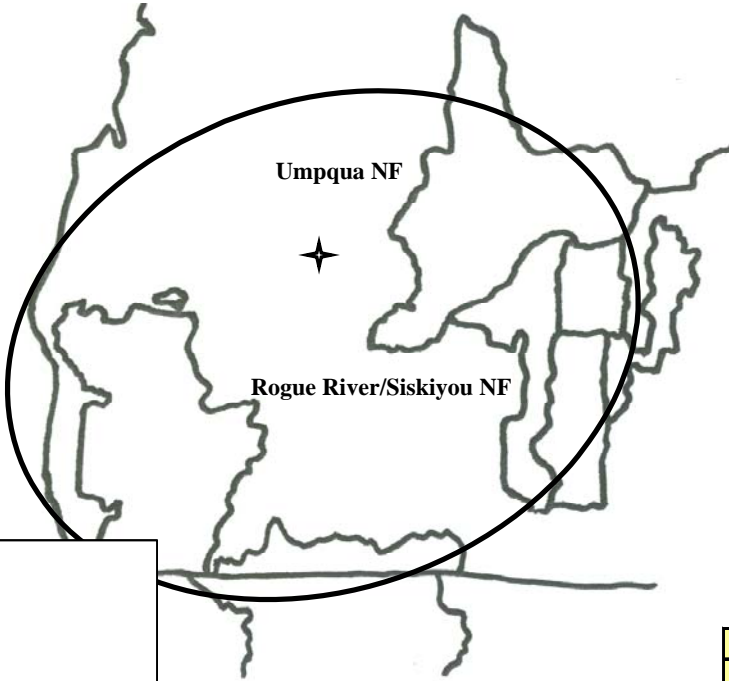


	gT	mmbf	
	Biomass	Small Log	Large Log
2007	0	0	0
2008	1500	5.1	0.6
2009	0	0	0
2010	0	0	0
2011	0	0	0
Totals	1500	5.1	0.6
%	5%	85%	10%
mmbf	0.3		

**Cow Creek: Tanoak CROP offering/removal '07 – '11**  
**(gT = 50,673 / S = 6.178 mmbf / L = 4.356 mmbf)**

gT = green tons (up to <7" dbh)  
 S = small log mmbf (>7"-12" dbh)  
 L = large log mmbf (>12" dbh)

**OR-BLM: 2 FO 100%**  
**(gT = 50,673 / S = 6.178 / L = 4.356)**



	gT	mmbf	
	Biomass	Small Log	Large Log
2007	10284.9	1.06962	0.71608
2008	9834.9	1.50462	0.8728
2009	9696.9	1.45227	0.90145
2010	10521.9	0.98742	1.081
2011	10334.4	1.16442	0.7848
Totals	50673	6.17835	4.35613
%	49%	30%	21%
mmbf	10.1346		

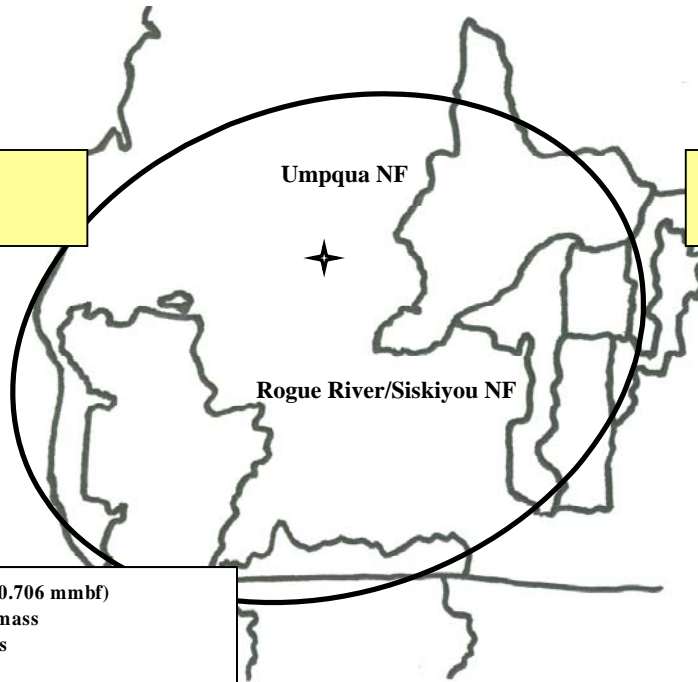
**20.66908**

**Cow Creek: Ponderosa Pine CROP offering/removal '07 - '11**  
**(gT = 45,623 / S = 6.41 mmbf / L = 5.17 mmbf)**

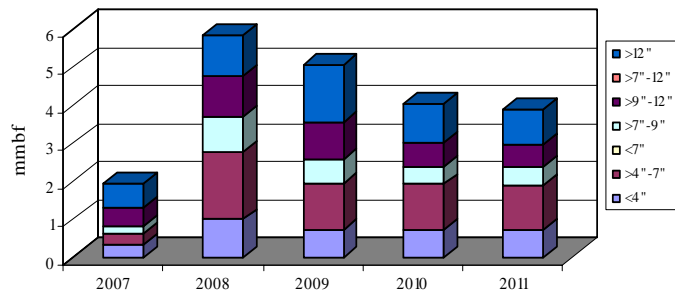
gT = green tons (up to <7" dbh)  
 S = small log mmbf (>7"-12" dbh)  
 L = large log mmbf (>12" dbh)

**Umpqua NF: 3 RDs 17%**  
**(gT = 463 / S = 1.527 / L = 1.863)**

**OR-BLM: 1 FO 83%**  
**(gT = 45,160 / S = 4.883 / L = 3.308)**



**All Agencies: Ponderosa Pine (5-yr total = 20.706 mmbf)**  
 9.125 mmbf is <7" = 45,623 gT of biomass  
 6.41 mmbf is >7"-12" = small logs  
 5.171 mmbf is >12" = large logs



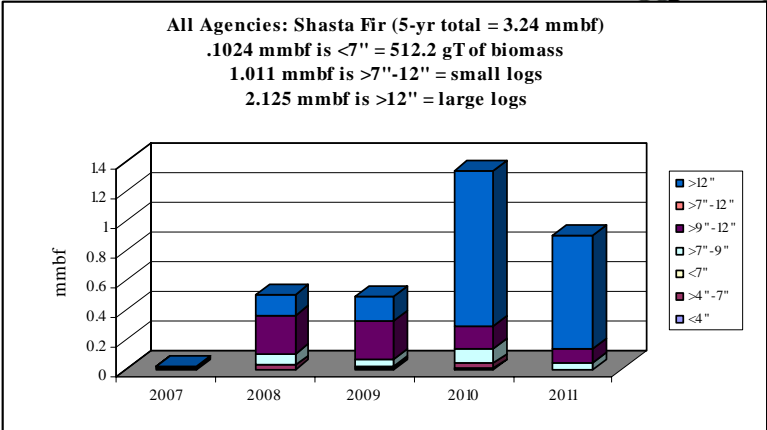
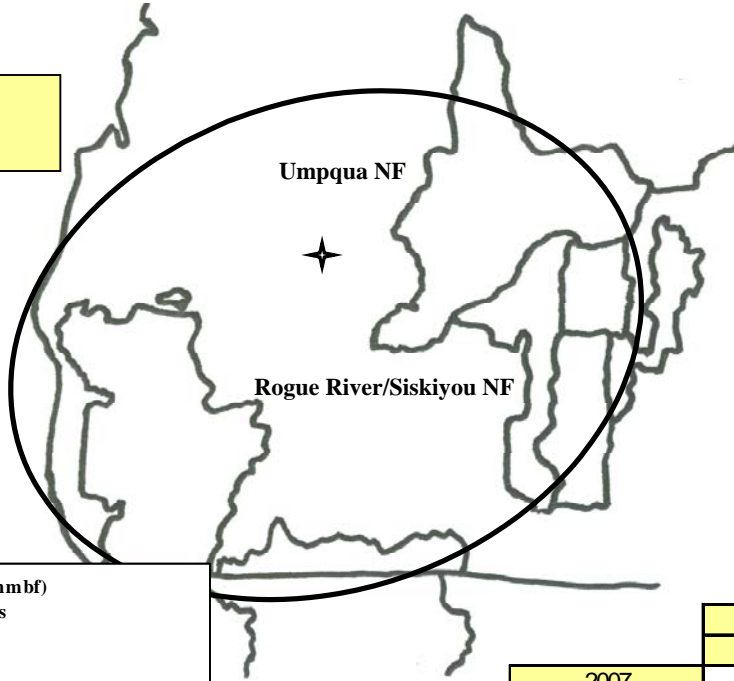
	gT	mmbf	
	Biomass	Small Log	Large Log
2007	3147.65	0.667	0.632
2008	13781	1.978	1.096
2009	9691.859	1.597	1.517
2010	9521.6	1.11	1.02
2011	9481	1.058	0.906
Totals	45623.109	6.41	5.171
%	44%	31%	25%
mmbf	9.1246218		

**20.7056218**

**Cow Creek: Shasta Fir CROP offering/removal '07 – '11  
(gT = 512 / S = 1.011 mmbf / L = 2.125 mmbf)**

gT = green tons (up to <7" dbh)  
S = small log mmbf (>7"-12" dbh)  
L = large log mmbf (>12" dbh)

**Umpqua NF: 3 RDs 100%  
(gT = 512 / S = 1.011 / L = 2.125)**



	gT	mmbf	
	Biomass	Small Log	Large Log
2007	81.1	0	0
2008	127.5	0.33	0.145
2009	114.65	0.297	0.165
2010	186.5	0.249	1.0505
2011	2.5	0.135	0.765
<b>Totals</b>	<b>512.25</b>	<b>1.011</b>	<b>2.1255</b>
<b>%</b>	<b>3%</b>	<b>31%</b>	<b>66%</b>
<b>mmbf</b>	<b>0.10245</b>		

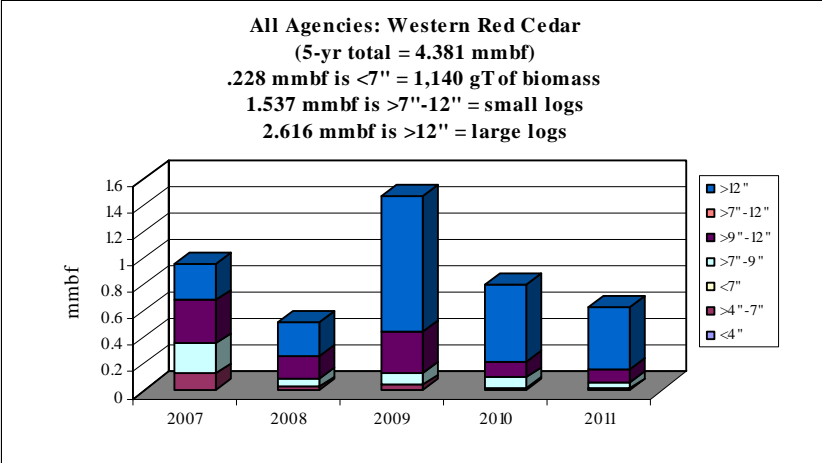
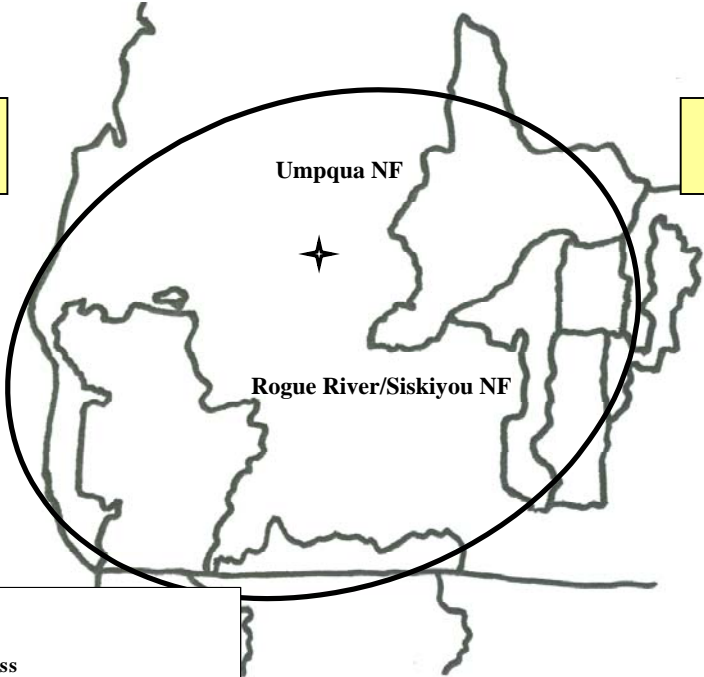
**3.23895**

**Cow Creek: Western Red Cedar CROP offering/removal '07 - '11  
(gT = 1,140 / S = 1.537 mmbf / L = 2.616 mmbf)**

gT = green tons (up to <7" dbh)  
S = small log mmbf (>7"-12" dbh)  
L = large log mmbf (>12" dbh)

**Umpqua NF: 3 RDs 69%**  
(gT = 803 / S = 1.065 / L = 1.806)

**OR-Counties: 1 County 31%**  
(gT = 337 / S = .472 / L = .81)



	gT	mmbf	
	Biomass	Small Log	Large Log
2007	625.15	0.5525	0.28
2008	133.5	0.2335	0.26
2009	204.359	0.4025	1.026
2010	109.1	0.2005	0.582
2011	68.5	0.1485	0.468
<b>Totals</b>	<b>1140.609</b>	<b>1.5375</b>	<b>2.616</b>
%	5%	35%	60%
<b>mmbf</b>	<b>0.2281218</b>		

**4.3816218**

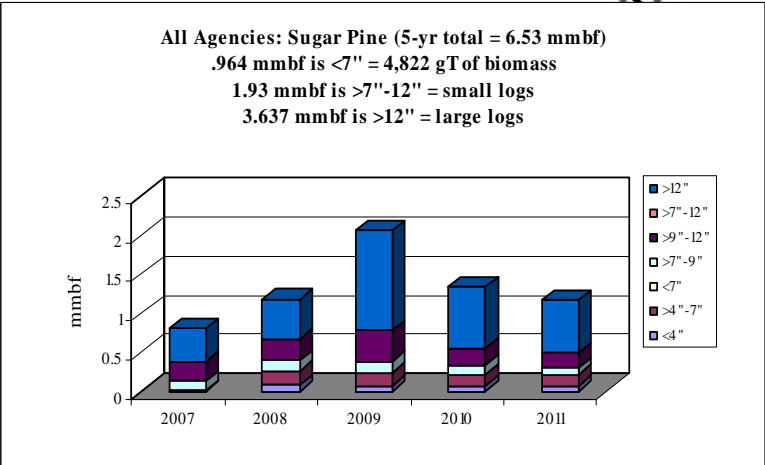
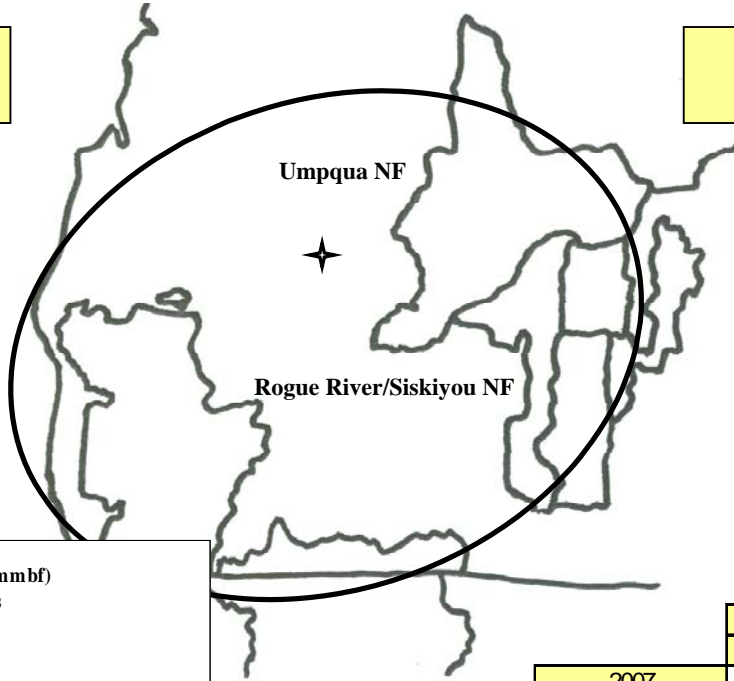


**Cow Creek: Sugar Pine CROP offering/removal '07 – '11  
(gT = 4,822 / S = 1.93 mmbf / L = 3.637 mmbf)**

gT = green tons (up to <7" dbh)  
S = small log mmbf (>7"-12" dbh)  
L = large log mmbf (>12" dbh)

**Umpqua NF: 3 RDs 43%**  
**(gT = 338 / S = .872 / L = 1.863)**

**OR-BLM: 1 FO 57%**  
**(gT = 4,484 / S = 1.06 / L = 1.774)**



	gT	mmbf	
	Biomass	Small Log	Large Log
2007	81.65	0.3662	0.42
2008	1321	0.4145	0.4945
2009	1216.859	0.536	1.277
2010	1121.6	0.334	0.78
2011	1081	0.282	0.666
Totals	4822.109	1.9327	3.6375
%	15%	30%	56%
mmbf	0.9644218		

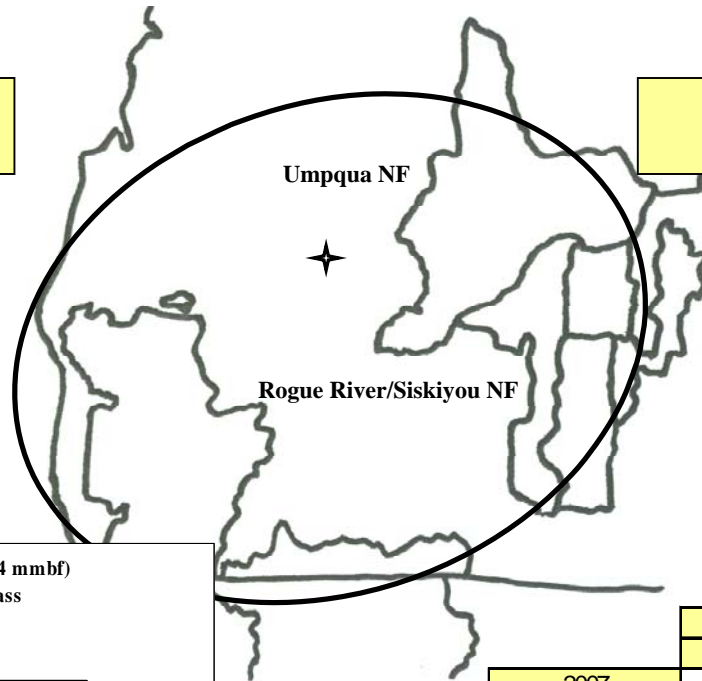
**6.5346218**

**Cow Creek: Incense Cedar CROP offering/removal '07 – '11**  
**(gT = 13,629 / S = 3.01 mmbf / L = 3.01 mmbf)**

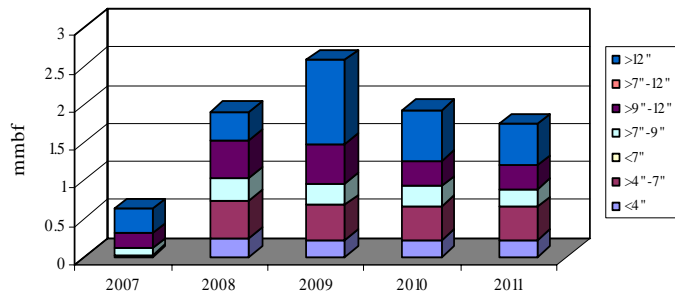
gT = green tons (up to <7" dbh)  
 S = small log mmbf (>7"-12" dbh)  
 L = large log mmbf (>12" dbh)

**Umpqua NF: 3 RDs 32%**  
**(gT = 303 / S = .915 / L = 1.8)**

**OR-BLM: 1 FO 68%**  
**(gT = 13,326 / S = 2.09 / L = 1.206)**



**All Agencies: Incense Cedar (5-yr total = 8.74 mmbf)**  
 2.725 mmbf is <7" = 13,629 gT of biomass  
 3.01 mmbf is >7"-12" = small logs  
 3.01 mmbf is >12" = large logs



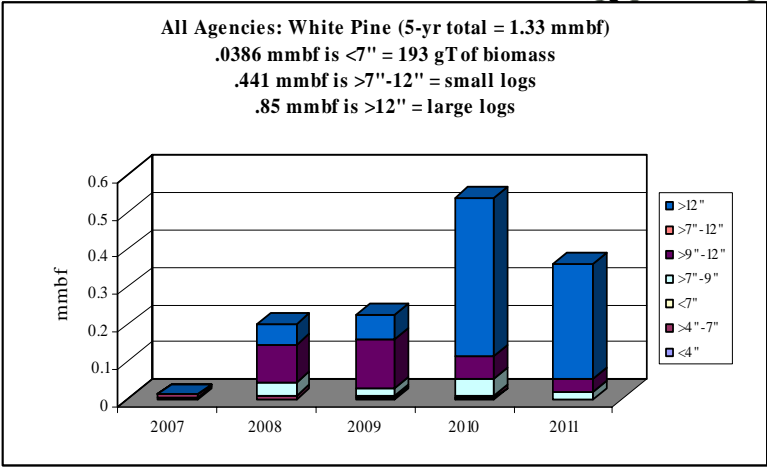
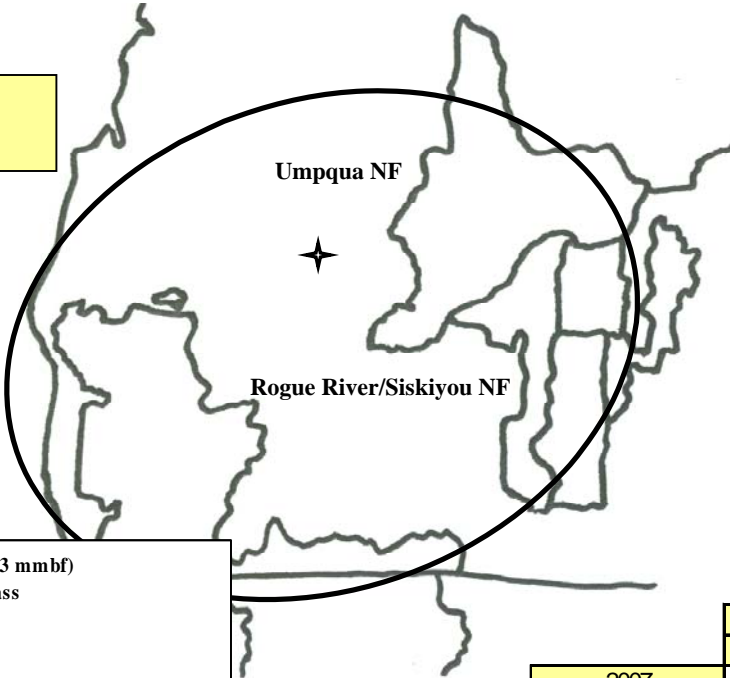
	gT	mmbf	
	Biomass	Small Log	Large Log
2007	73.65	0.2888	0.324
2008	3656	0.7895	0.3725
2009	3376.859	0.796	1.104
2010	3281.6	0.594	0.66
2011	3241	0.542	0.546
Totals	13629.109	3.0103	3.0065
%	31%	34%	34%
mmbf	2.7258218		

**8.7426218**

**Cow Creek: White Pine CROP offering/removal '07 – '11  
(gT = 193 / S = .441 mmbf / L = .85 mmbf)**

gT = green tons (up to <7" dbh)  
S = small log mmbf (>7"-12" dbh)  
L = large log mmbf (>12" dbh)

**Umpqua NF: 3 RDs 100%  
(gT = 193 / S = .441 / L = .85)**



	gT	mmbf	
	Biomass	Small Log	Large Log
2007	52.65	0	0
2008	51	0.132	0.058
2009	46.859	0.149	0.066
2010	41.6	0.106	0.42
2011	1	0.054	0.306
<b>Totals</b>	<b>193.109</b>	<b>0.441</b>	<b>0.85</b>
<b>%</b>	<b>3%</b>	<b>33%</b>	<b>64%</b>
<b>mmbf</b>	<b>0.0386218</b>		

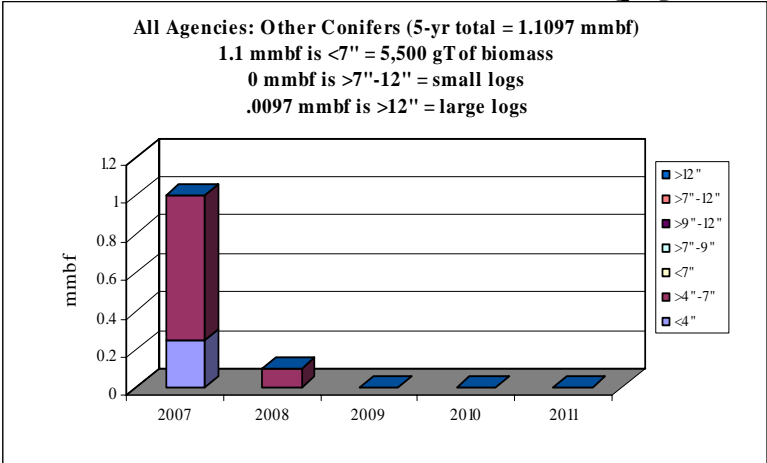
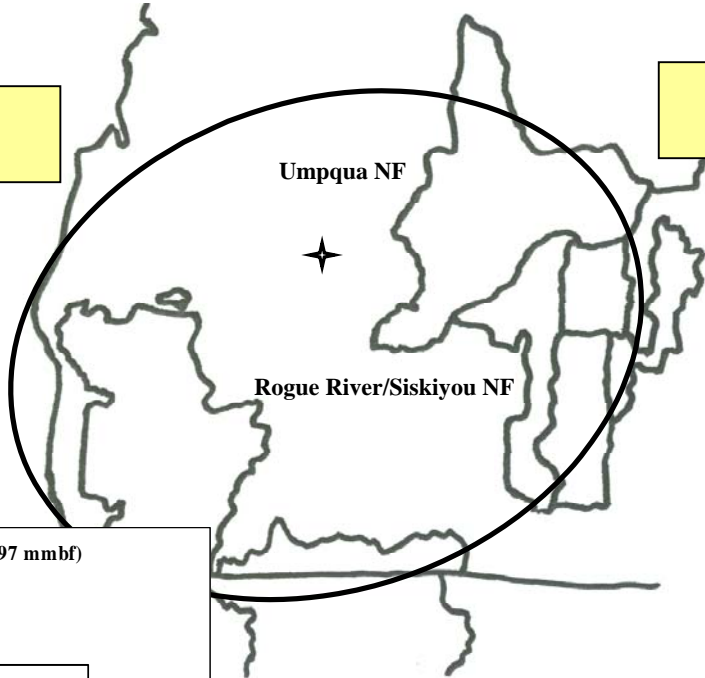
**1.3296218**

**Cow Creek: Other Conifers CROP offering/removal '07 - '11**  
**(gT = 5,500 / S = 0 mmbf / L = .0097 mmbf)**

gT = green tons (up to <7" dbh)  
 S = small log mmbf (>7"-12" dbh)  
 L = large log mmbf (>12" dbh)

**Umpqua NF: 1 RD 99 %**  
**(gT = 5,500 / S = 0 / L = 0)**

**ODOT: 1%**  
**(gT = 0 / S = 0 / L = .0097)**



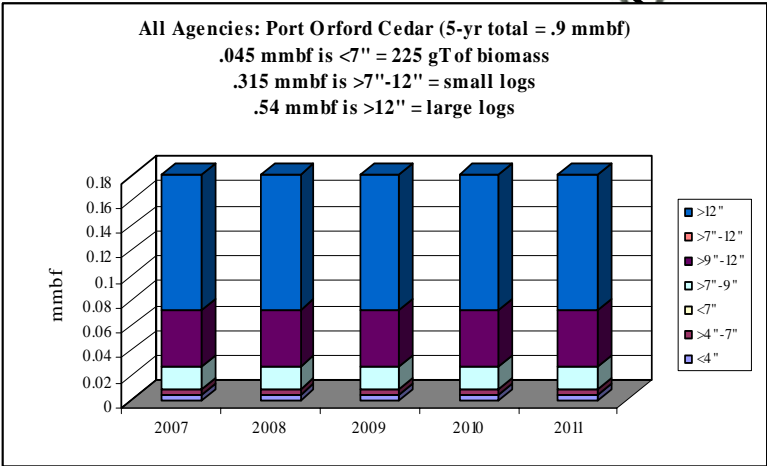
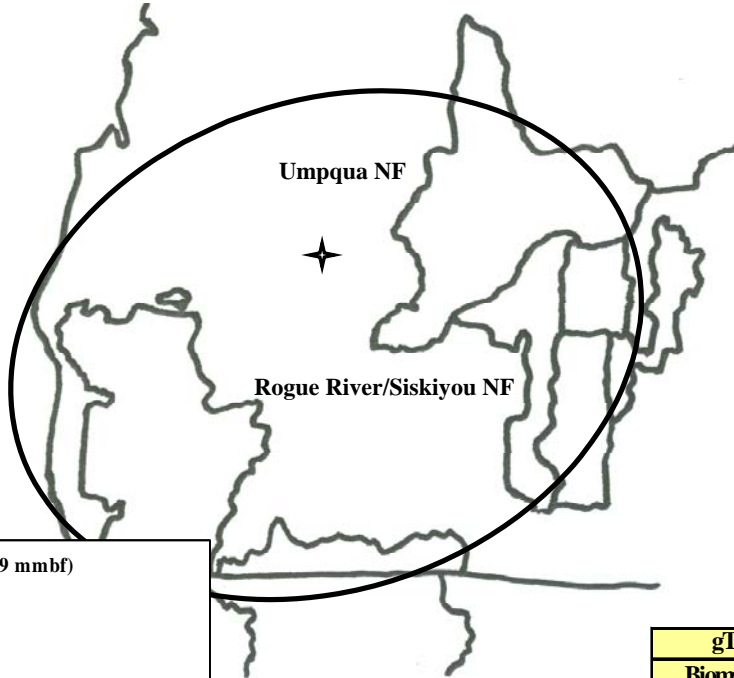
	gT	mmbf	
	Biomass	Small Log	Large Log
2007	5000	0	0.00195
2008	500	0	0.00195
2009	0	0	0.00195
2010	0	0	0.00195
2011	0	0	0.00195
Totals	5500	0	0.00975
%	99%	0%	1%
mmbf	1.1		

**1.10975**

**Cow Creek: Port Orford Cedar CROP offering/removal '07 – '11  
(gT = 225 / S = .315 mmbf / L = .54 mmbf)**

gT = green tons (up to <7" dbh)  
S = small log mmbf (>7"-12" dbh)  
L = large log mmbf (>12" dbh)

**OR-Counties: 1 County 100%**  
(gT = 225 / S = .315 / L = .54)



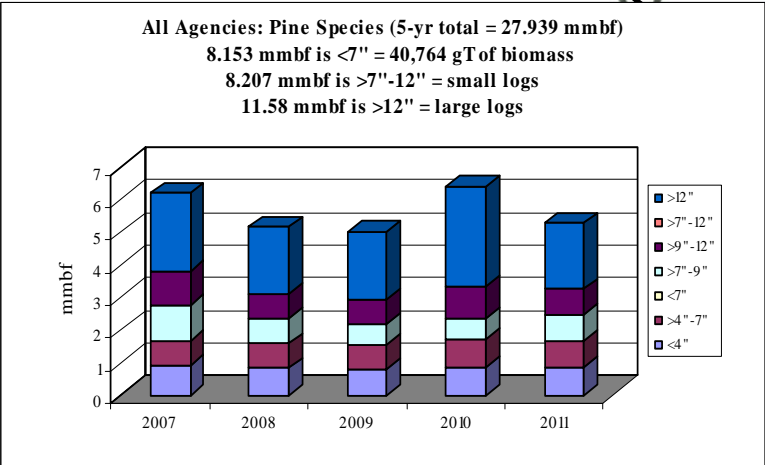
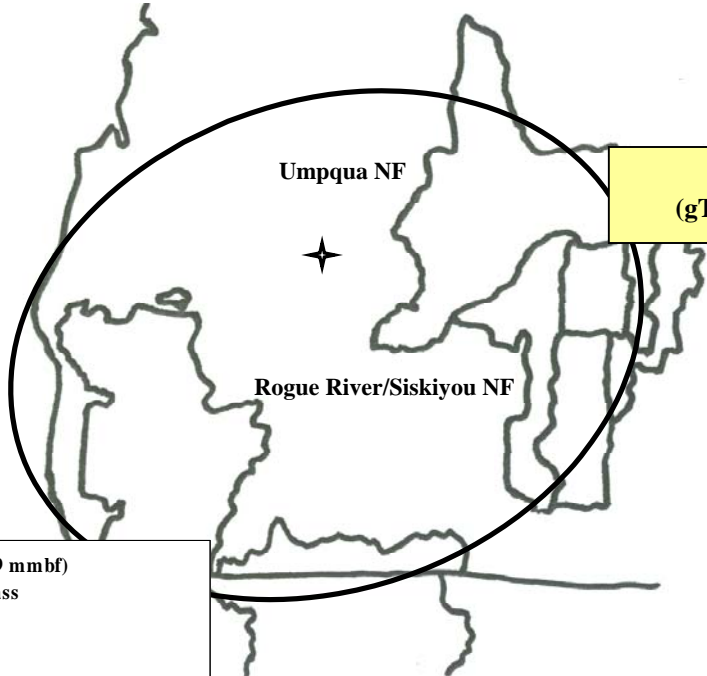
	gT	mmbf	
	Biomass	Small Log	Large Log
2007	45	0.063	0.108
2008	45	0.063	0.108
2009	45	0.063	0.108
2010	45	0.063	0.108
2011	45	0.063	0.108
<b>Totals</b>	<b>225</b>	<b>0.315</b>	<b>0.54</b>
<b>%</b>	<b>5%</b>	<b>35%</b>	<b>60%</b>
<b>mmbf</b>	<b>0.045</b>		

**Cow Creek: *Pine Species* CROP offering/removal '07 – '11**  
**(gT = 40,764 / S = 8.207 mmbf / L = 11.58 mmbf)**

gT = green tons (up to <7" dbh)  
 S = small log mmbf (>7"-12" dbh)  
 L = large log mmbf (>12" dbh)

**OR-Counties: 1 County 3%**  
 (gT = 0 / S = .258 / L = .524)

**OR-BLM: 1 FO 97%**  
 (gT 40,764 = / S 7.95 = / L = 11.05)



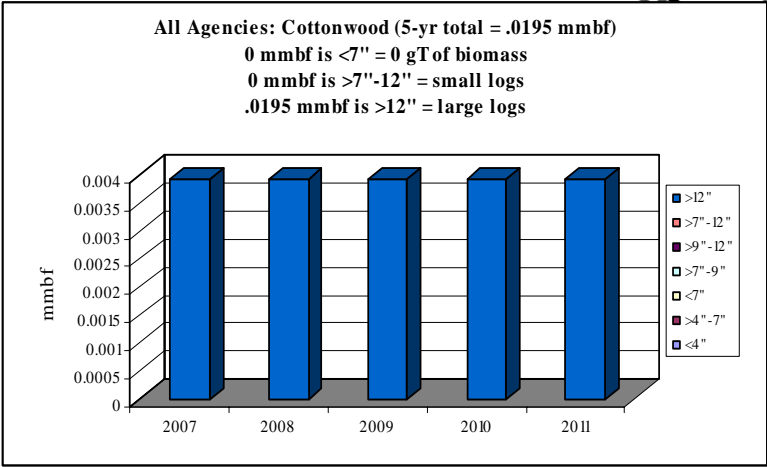
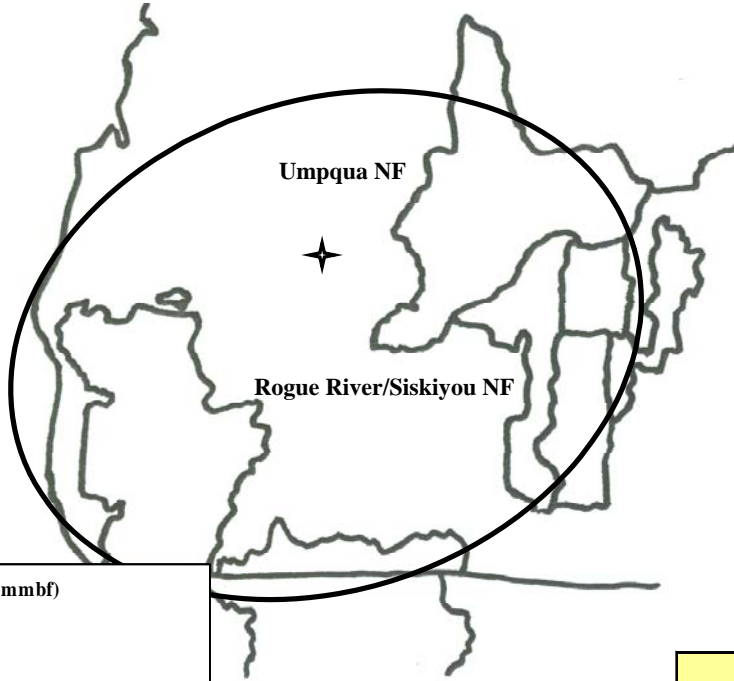
	gT	mmbf	
	Biomass	Small Log	Large Log
2007	8255	2.116720015	2.409975485
2008	7852.575	1.529220015	2.040535485
2009	7738.75	1.390670015	2.042985485
2010	8548.075	1.605370015	3.069385485
2011	8369.75	1.565370015	2.016785485
Totals	40764.15	8.207350075	11.57966743
%	29%	29%	41%
mmbf	8.15283		

**27.9398475**

**Cow Creek: Cottonwood CROP offering/removal '07 - '11**  
**(gT = 0 / S = 0 mmbf / L = .0195 mmbf)**

gT = green tons (up to <7" dbh)  
 S = small log mmbf (>7"-12" dbh)  
 L = large log mmbf (>12" dbh)

**ODOT: 100%**  
**(gT = 0 / S = 0 / L = .0195)**



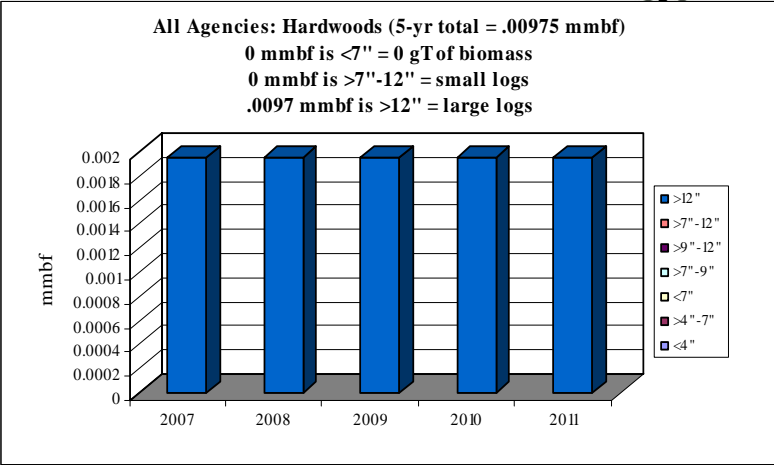
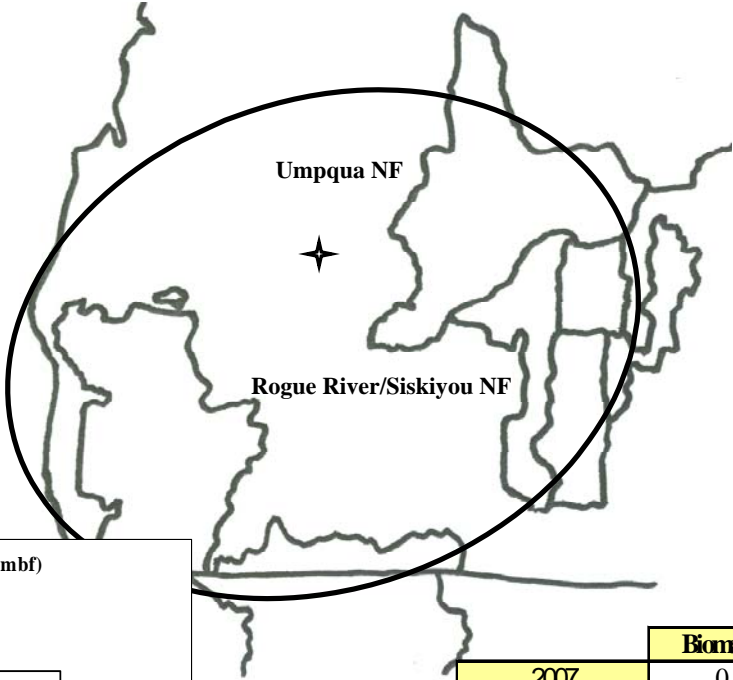
	gT	mmbf	
	Biomass	Small Log	Large Log
2007	0	0	0.0039
2008	0	0	0.0039
2009	0	0	0.0039
2010	0	0	0.0039
2011	0	0	0.0039
Totals	0	0	0.0195
%	0%	0%	100%
mmbf	0		

**0.0195**

**Cow Creek: Hardwoods CROP offering/removal '07 – '11  
(gT = 0 / S = 0 mmbf / L = .0097 mmbf)**

gT = green tons (up to <7" dbh)  
S = small log mmbf (>7"-12" dbh)  
L = large log mmbf (>12" dbh)

**ODOT: 100%**  
(gT = 0 / S = 0 / L = .0097)



	Biomass	Small Log	Large Log
2007	0	0	0.00195
2008	0	0	0.00195
2009	0	0	0.00195
2010	0	0	0.00195
2011	0	0	0.00195
Totals	0	0	0.00975
%	0%	0%	100%
mmbf	0		

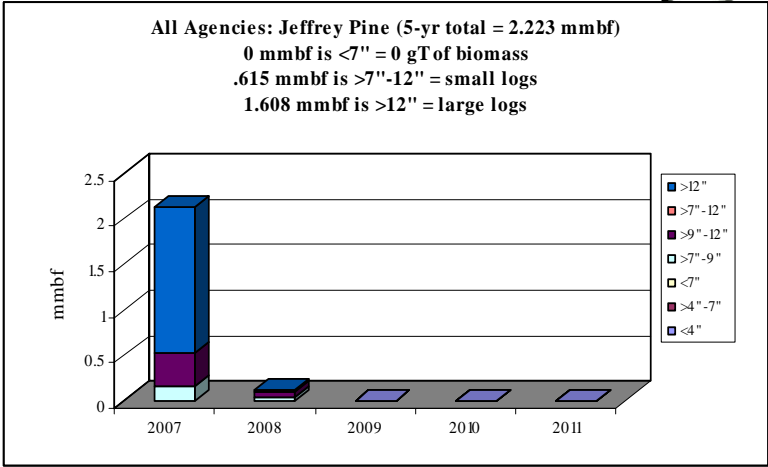
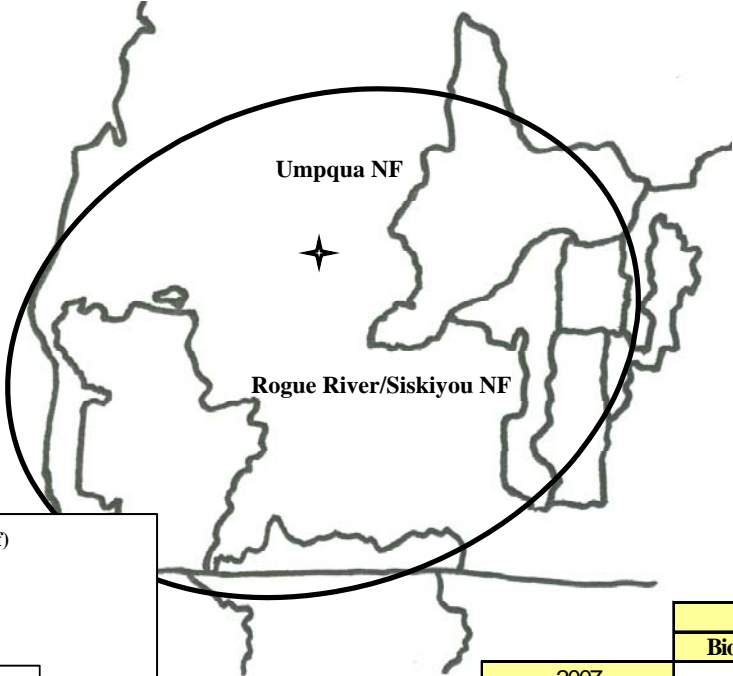
**0.00975**



**Cow Creek: Jeffrey Pine CROP offering/removal '07 – '11  
(gT = 0 / S = .615 mmbf / L = 1.608 mmbf)**

gT = green tons (up to <7" dbh)  
S = small log mmbf (>7"-12" dbh)  
L = large log mmbf (>12" dbh)

**OR-BLM: 1 FO 100%**  
(gT = 0 / S = .615 / L = 1.608)



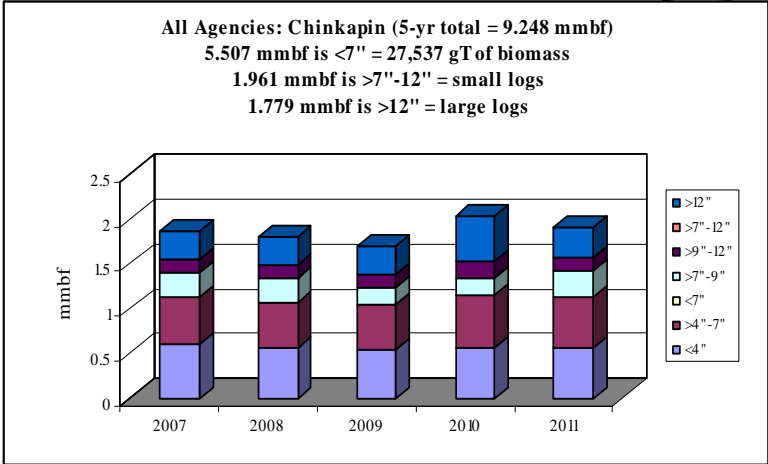
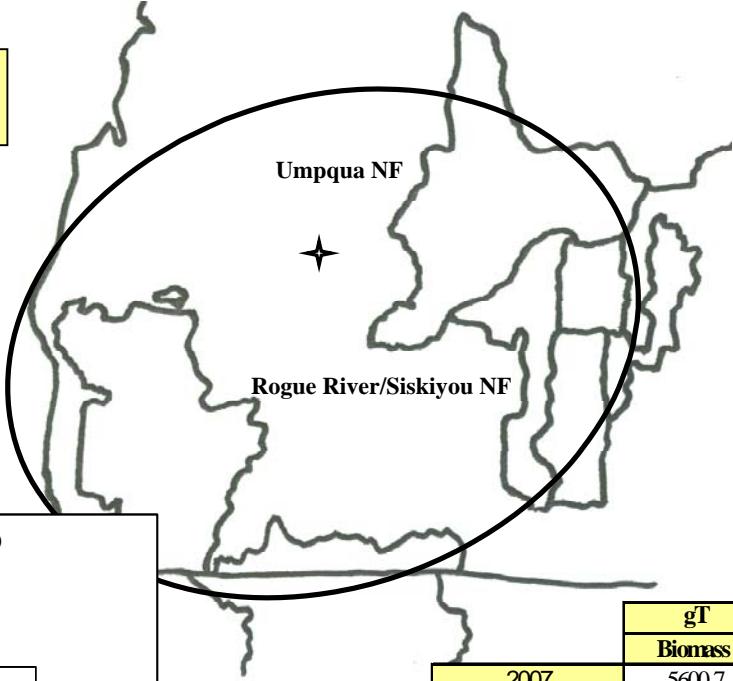
	gT	mmbf	
	Biomass	Small Log	Large Log
2007	0	0.525	1.59
2008	0	0.09	0.018
2009	0	0	0
2010	0	0	0
2011	0	0	0
Totals	0	0.615	1.608
%	0%	28%	72%
mmbf	0		

**2.223**

**Cow Creek: Chinkapin CROP offering/removal '07 – '11  
(gT = 27,537 / S = 1.961 mmbf / L = 1.779 mmbf)**

gT = green tons (up to <7" dbh)  
S = small log mmbf (>7"-12" dbh)  
L = large log mmbf (>12" dbh)

**OR-BLM: 1 FO 100%**  
(gT = 27,537 / S = 1.961 / L = 1.779)



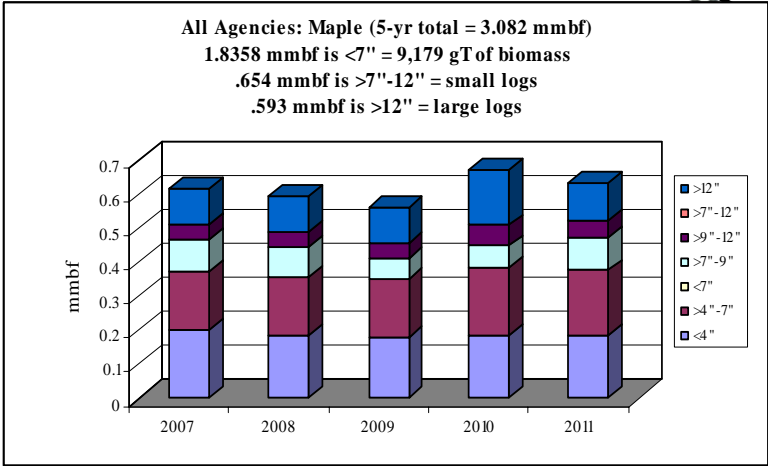
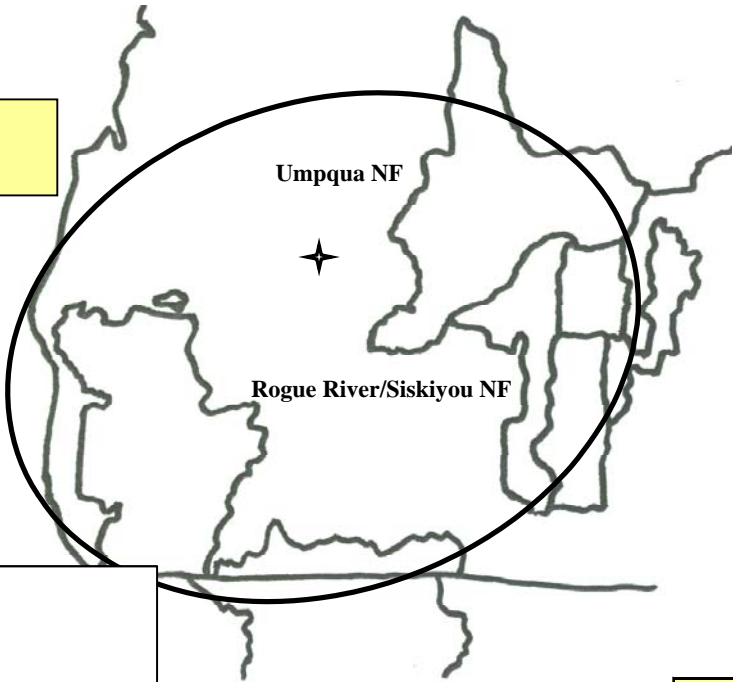
	gT	mmbf	
	Biomass	Small Log	Large Log
2007	5600.7	0.41766	0.31404
2008	5330.825	0.40716	0.314775
2009	5242.95	0.32361	0.313725
2010	5737.95	0.37656	0.499125
2011	5625.45	0.43656	0.338025
<b>Totals</b>	<b>27537.875</b>	<b>1.96155</b>	<b>1.77969</b>
%	60%	21%	19%
<b>mmbf</b>	<b>5.507575</b>		

**9.248815**

**Cow Creek: Maple CROP offering/removal '07 - '11**  
**(gT = 9,179 / S = .654 mmbf / L = .593 mmbf)**

gT = green tons (up to <7" dbh)  
 S = small log mmbf (>7"-12" dbh)  
 L = large log mmbf (>12" dbh)

**OR-BLM: 1 FO 100%**  
**(gT = 9,179 / S = .654 / L = .593)**



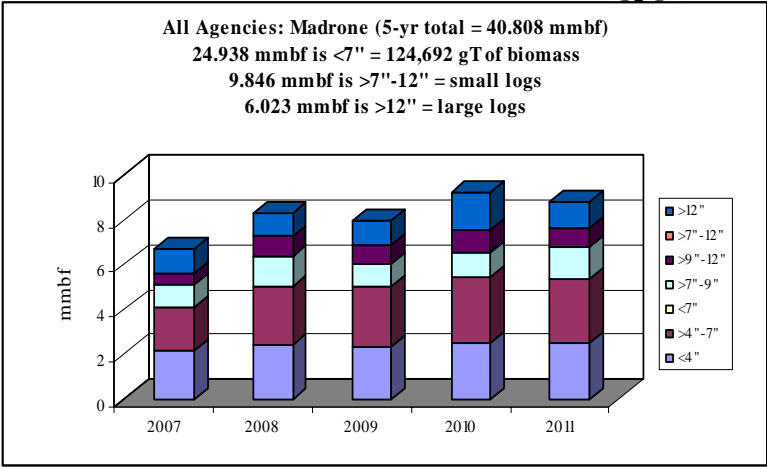
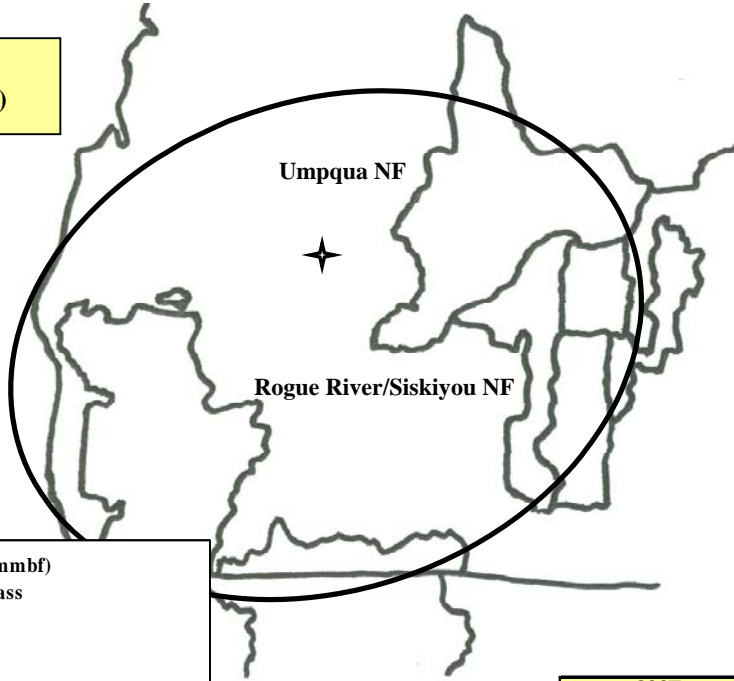
	gT	mmbf	
	Biomass	Small Log	Large Log
2007	1866.9	0.13922	0.10468
2008	1776.9	0.13572	0.104925
2009	1747.65	0.10787	0.104575
2010	1912.65	0.12552	0.166375
2011	1875.15	0.14552	0.112675
Totals	9179.25	0.65385	0.59323
%	60%	21%	19%
mmbf	1.83585		

**3.08293**

**Cow Creek: Madrone CROP offering/removal '07 – '11  
(gT = 124,692 / S = 9.846 mmbf / L = 6.023 mmbf)**

gT = green tons (up to <7" dbh)  
S = small log mmbf (>7"-12" dbh)  
L = large log mmbf (>12" dbh)

**OR-BLM: 1 FO 100%**  
(gT = 124,692 / S = 9.846 / L = 6.023)



	gT	mmbf	
	Biomass	Small Log	Large Log
2007	20509.5	1.4804	1.0663
2008	25068	2.2094	1.0735
2009	25084.5	1.8539	1.0585
2010	27213	2.0364	1.6795
2011	26817	2.2664	1.1455
<b>Totals</b>	<b>124692</b>	<b>9.8465</b>	<b>6.0233</b>
%	61%	24%	15%
<b>mmbf</b>	<b>24.9384</b>		

**40.8082**

*For more information contact:*

**Catherine M. Mater:**

President—Mater Ltd.  
136 SW Washington Avenue; Suite 201  
Corvallis, Oregon; 97333  
tel: (541) 753-7335 fax: (541) 752-2952  
*E-mail: catherine@mater.com*

**Ms. Amy Amoroso:**

Natural Resource Director  
Cow Creek Band of Umpqua Tribe of Indians  
Roseburg, OR  
tel: (541) 677-5575 fax: (541) 677-5574  
*E-mail: aamoroso@cowcreek.com*