

Colorado CROP

A Summary of CROP Landscape Analyses Results

Presented by

Catherine M. Mater

President—Mater Engineering

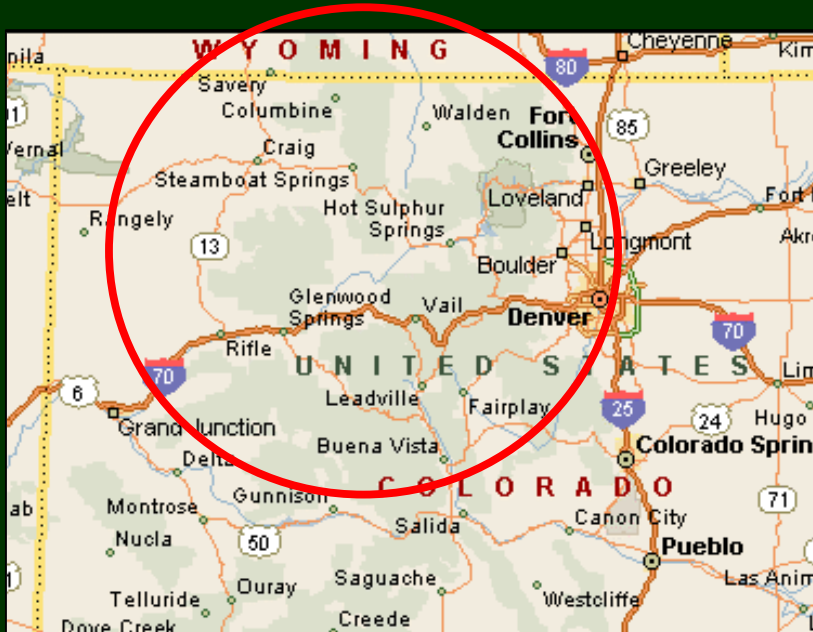
Senior Fellow – The Pinchot Institute for Conservation

Corvallis, Oregon; Washington, DC

Tel: 541-753-7335 Fx: 541-752-2952

E-mail: catherine@mater.com

Colorado CROP: Kremmling, CO (centerpoint)



- *3 States*
- *6 National Forests*
- *22 Ranger Districts*
- *9 BLM Districts*
- *29 Counties*
- *State Lands*

National Forests: 22 Ranger Districts

- **Arapaho/Roosevelt NF:** Clear Creek, Sulphur, Boulder, Canyon Lakes
- **White River NF:** Aspen/Sopris, Dillon, Holy Cross/Eagle, Blanco, Rifle
- **Grand Mesa, Uncompahgre, Gunnison:** Grand Valley, Gunnison, Paonia
- **Pike NF:** South Park, Pikes Peak, South Platte
- **San Isabel NF:** Leadville, Salida
- **Medicine Bow – Routt NF:** Brush Creek/Hayden, Laramie, Hahn Peak and Bear Ears, Parks, Yampa

9 BLM Districts

CO:

Glenwood Springs, Grand Junction, Royal Gorge, Kremmling, Little Snake, Gunnison, White River, Uncompahgre

WY: Rawlings

29 Counties:

CO:

Jefferson	Summit	Mesa	Denver	Rio Blanco
Pitkin	Clear Creek	Adams	Arapahoe	Chaffee
Delta	Douglas	Eagle	Garfield	Gilpin
Grand	Gunnison	Jackson	Lake	Larimer
Moffat	Park	Routt	Teller	Weld

WY: Carbon, Albany, Laramie

What was asked for (5-yr. Period):

- *Volume* (by mmbf; green/dry tons; ccf) w/conversions
- *Diameter sizes* <4" 4"-7" 7"-9" 9"-12" >12"
- *Species* (10 species evaluated for resource flow)
- *Harvest "type"*: fuel load reduction, timber sales, PCT, post and pole
- *Location* of resource offering
- *NEPA phase* for each resource offering
- *Road accessibility* for each resource offering

**So, let's take a look at
the final results . . .**

Overall:

Year	Total Biomass (273,726 gT)	% of 5-yr volume
2006	58,181.25	21%
2007	51,245	19%
2008	61,005.5	22%
2009	57,531.75	21%
2010	45,763	17%

Biomass = 12%
(up to 7" dbh)

Total Small Log (279.105 mmbf)	% of 5-yr volume
72.630	26%
53.13	19%
60.746	22%
53.536	19%
39.062	14%

Small Logs = 60%
(7" – 12" dbh)

Total Large Log (128.11 mmbf)	% of 5-yr volume
36.746	29%
25.56	20%
25.34	20%
22.36	17%
18.104	14%

Large Logs = 28%
(>12" dbh)

Who's providing what?

Agency	5-yr Total <i>Biomass (gT)</i>	5-yr Total <i>Small Log (mmbf)</i>	5-yr Total <i>Large Log (mmbf)</i>	% of 5-yr Total
Medicine Bow/Routt NF	14,555	78.37	65.87	32%
Arapaho/Roosevelt NF	138,250	64.52	6.11	21%
White River NF	43,600	57.8	21.85	19%
CO-DNR	0	22.62	22.62	10%
Pike NF	21,484	19.966	3.3329	6%
CO BLM	32,525	15.26	2.05	5%
San Isabel NF	9,850	9.79	3.11	3%
Grand Mesa NF	6,800	2.21	1.46	1%
WY BLM	0	5	0	1%
WY SFD	1,562	1.93	1.28	1%
Co Counties	5,100	1.59	.382	1%

Medicine Bow - Routt NF: (gT= 14,555; Small log = 78.37 mmbf; Large log = 65.87 mmbf)

Ranger Districts	5-yr Total (biomass = gT)	5-yr Total Small log (mmbf)	5-yr Total Large log (mmbf)
Brush Creek/Hayden	1,020	12	9.79
Laramie	8,827.5	13.49	10.82
Hahns Peak/Bear Ears	690	8.67	6.65
Parks	2,612.5	28.24	25.08
Yampa	1405	15.96	13.52

San Isabel NF: (gT= 9,850; Small log = 9.79 mmbf; Large log = 3.11 mmbf)

Ranger Districts	5-yr Total (biomass = gT)	5-yr Total Small log (mmbf)	5-yr Total Large log (mmbf)
Leadville	9,850	2.75	.625
Salida	0	7.04	2.49

Arapaho/Roosevelt NF: (*gT= 138,250; Small log = 64.52 mmbf; Large log = 6.11 mmbf*)

Ranger Districts	5-yr Total (biomass = gT)	5-yr Total Small log (mmbf)	5-yr Total Large log (mmbf)
Clear Creek	4,400	.32	.08
Sulphur	34,750	49.35	4
Canyon Lakes	74,700	13.14	1.73
Boulder	24,400	1.71	.3

Pike NF: (*gT= 21,484; Small log = 19.96 mmbf; Large log = 3.329 mmbf*)

Ranger Districts	5-yr Total (biomass = gT)	5-yr Total Small log (mmbf)	5-yr Total Large log (mmbf)
Pikes Peak	6,667	4.468	.743
South Platte	8,027	5.219	1.2
South Park	6,789	10.279	1.386

Whiteriver NF: (gT= 43,600; Small log = 57.8 mmbf; Large log = 21.85 mmbf)

Ranger Districts	5-yr Total (biomass = gT)	5-yr Total Small log (mmbf)	5-yr Total Large log (mmbf)
Aspen/Sopris	2,500	5.1	1.55
Dillon	23,900	19.9	11
Holy Cross/Eagle	8,000	18.4	8.3
Blanco	9,200	6.2	0
Rifle	0	8.2	1

Grand Mesa, U, & G NF: (gT= 6,800; Small log = 2.21 mmbf; Large log = 1.46 mmbf)

Ranger Districts	5-yr Total (biomass = gT)	5-yr Total Small log (mmbf)	5-yr Total Large log (mmbf)
Grand Valley	1,500	1.8	1.1
Gunnison	150	0	0
Paonia	5,150	.29	.28

BLM: (*gT* = 32,525; *Small log* = 20.26 mmbf; *Large log* = 2.05 mmbf)

Agency	Field Offices	5-yr Total (biomass = gT)	5-yr Total Small log (mmbf)	5-yr Total Large log (mmbf)
CO BLM <i>gT</i> = 32,525 <i>Small log</i> = 15.26 mmbf <i>Large log</i> = 2.05 mmbf	Royal Gorge	1,125	.185	0
	Whiteriver	3,250	3.5	0
	Little Snake	4,000	.25	0
	Glenwood Springs	6,300	0	0
	Kremmling	300	6.383	2.05
WY BLM <i>gT</i> = 0 <i>Small log</i> = 5 mmbf <i>Large log</i> = 0 mmbf	Rawlings	0	5	0

Agency	5-yr Total (biomass = gT)	5-yr Total Small log (mmbf)	5-yr Total Large log (mmbf)
CO DNR	0	22.62	22.62

Agency	5-yr Total (biomass = gT)	5-yr Total Small log (mmbf)	5-yr Total Large log (mmbf)
WY SFD	1,562	1.93	1.28

Agencies	5-yr Total (biomass = gT)	5-yr Total Small log (mmbf)	5-yr Total Large log (mmbf)
Colorado Counties	5,100	1.59	.382

<i>By Species</i>		5-yr Total (biomass = gT)	5-yr Total Small log (mmbf)	5-yr Total Large log (mmbf)
Lodgepole pine	(78% of 5-yr. total)	147,736	224.17	107.87
Ponderosa pine	(8% of 5-yr. total)	42,287	24.38	5.54
Douglas fir	(5% of 5-yr. total)	62,038	10.65	2.42
Engelmann spruce	(3% of 5-yr. total)	3,500	7.50	7.21
Aspen	(2% of 5-yr. total)	9150	5.80	1.62
Subalpine fir	(<1% of 5-yr. total)	1500	1.40	2.82
Pinyon pine/juniper	(<1% of 5-yr. total)	3550	2.84	.101
Limber pine	(<1% of 5-yr. total)	0	1.25	0
Pinyon pine	(<1% of 5-yr. total)	0	.75	0
Juniper	(<1% of 5-yr. total)	2500	.25	0
Gambel oak	(<1% of 5-yr. total)	1350	0	0
Blue spruce	(<1% of 5-yr. total)	114	.06	.01
Other conifers	(<1% of 5-yr. total)	0	.03	.03

Good picture for small log processing where largest percentage of volume is projected to be in the >9"-12" log strata.

(% of total volume)	4"-7"	>7"-9"	>9"-12"
Lodgepole pine	7%	13%	43%
Ponderosa Pine	14	26	34
Douglas fir	17	16	25
Englemann Spruce	5	5	44
SubAlpine Fir	7	15	16
Pinyon pine/juniper	19	33	42
Limber pine	0	0	100
Pinyon pine	0	0	80
Juniper	67	33	0
Gambel Oak	7	0	0
Blue Spruce	10	31	31
Other Conifers	0	0	0
Aspen	19	28	23

Resource Offering Maps (ROMS):

Here's what you get for each species . . .

- ✓ Who will supply?
- ✓ When will supply be offered?
- ✓ How much will be offered?
- ✓ What diameter size will it be offered in?
- ✓ Will supply be consistent and levelized over time to invite purchase and investment?

For each species:

- ✓ Locator map per specific supplier
- ✓ Summary sheet
- ✓ Detailed supply breakouts by volume, diameter, and year per supplier

*Let's look at Lodgepole Pine
as an example . . .*

Colorado CROP

Lodgepole Pine CROP offering '06 - '10
 (gT = 147,736 / S = 224.17 mmbf / L = 107.87 mmbf)

ROM # LP 1.1

LP= lodgepole pine

BLM:

- A Royal Gorge District (CO)
- B White River District (CO)
- C Little Snake District (CO)
- D Glenwood Springs District (CO)
- E Kremmling District (CO)
- F Rawlins District (WY)

WY - SFD:

- G SFD

Arapaho/Roosevelt NF:

- H Clear Creek RD
- I Sulphur RD
- J Canyon Lakes RD
- K Boulder RD

Grand Mesa, U & G NFs:

- L Grand Valley RD
- M Gunnison RD
- N Paonia RD

Medicine Bow/Routt NFs:

- O Brush Creek/Hayden RD
- P Laramie RD
- Q Hahns Peak/Bears Ear RD
- R Parks RD
- S Yampa RD

Pike NF:

- T Pikes Peak RD
- U South Platte RD
- V South Park RD

San Isabel NF:

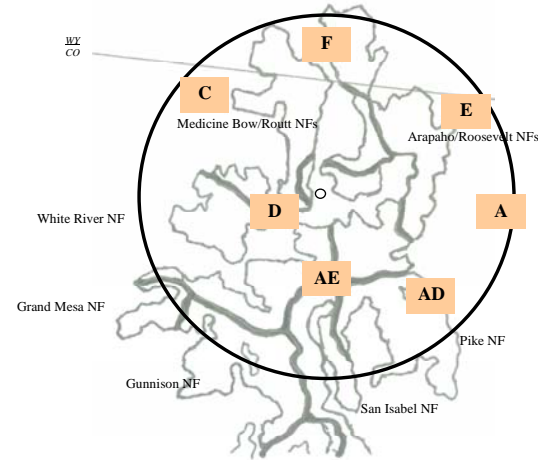
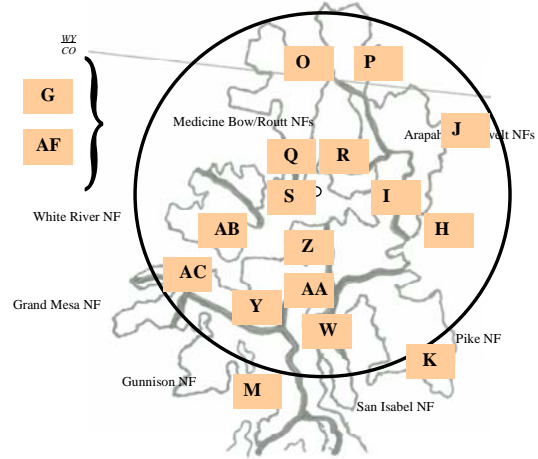
- W Leadville RD
- X Salida RD

White River NF:

- Y Aspen/Sopris RD
- Z Dillon RD
- AA Holy Cross/Eagle RD
- AB Blanco RD
- AC Rifle RD

Colorado Counties:

- AD Jefferson Co.
- AE Summit Co.



Locator map

Summary Sheet

Colorado CROP

Colorado: Lodgepole Pine CROP offering '06 - '10
 (gT = 147,736 / S = 224.17 mmbf / L = 107.87 mmbf)

ROM # LP 1

gT = green tons (up to 7" dbh)
 S = small log mmbf (>7"-12" dbh)
 L = large log mmbf (>12" dbh)

Medicine Bow/Routt NF: 5 RDs - 37%
 (gT = 14,555 / S = 74.945 / L = 57.63)

White River NF: 5 RDs - 21%
 (gT = 36,100 / S = 49.6 / L = 20.3)

Grand Mesa, U & G NF: 1 RD - <1%
 (gT = 150 / S = 0 / L = 0)

WY-SFD: 1%
 (gT = 1,562 / S = 1.93 / L = 1.28)

CO-DNR: 11%
 (gT = 0 / S = 20.243 / L = 20.243)

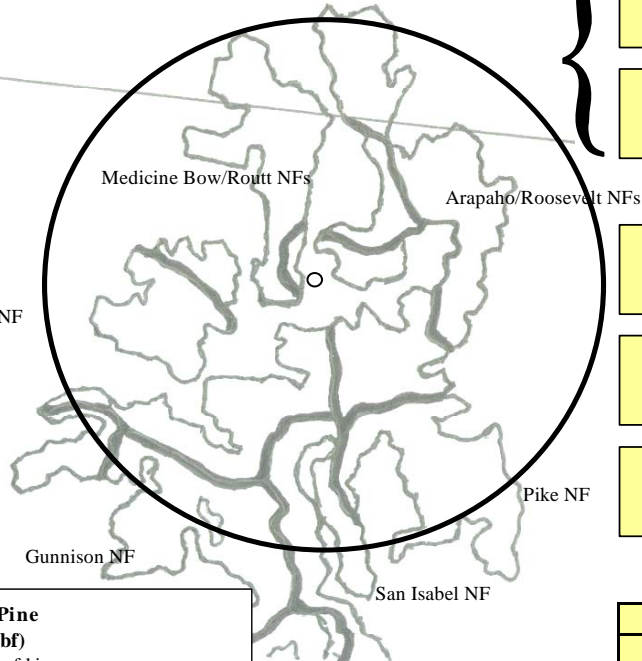
CO-BLM: 4 districts - 5%
 (gT = 20,175 / S = 11.27 / L = 2.05)

WY-BLM: 1 district - <1%
 (gT = 0 / S = .5 / L = 0)

Arapaho/Roosevelt NF: 4 RDs - 23%
 (gT = 69,000 / S = 63.5 / L = 5.92)

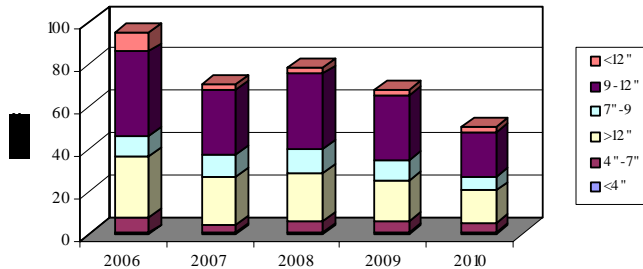
CO-Counties: 2 Counties <1%
 (gT = 531.2 / S = .232 / L = 0)

San Isabel NF: 1 RD - 1%
 (gT = 5,662 / S = 1.947 / L = .438)



All Agencies: Lodgepole Pine
 (5-yr total = 361.596 mmbf)

29,547 mmbf is <7" = 147,736 gT of biomass
 224.17 mmbf is >7"-12" = small logs
 107.87 mmbf is >12" = large logs



	(gT)	mmbf	
	Biomass (gT)	Small Logs	Large Logs
2006	37957.5	58.3285	28.9765
2007	23080	44.006	22.0845
2008	32003.75	49.51875	22.054
2009	29680	42.423	19.4175
2010	25015	29.8985	15.342
Totals	147736.25	224.17475	107.8745
%	8.171331857	61.99582961	29.83283854
mmbf	29.54725		

Colorado CROP

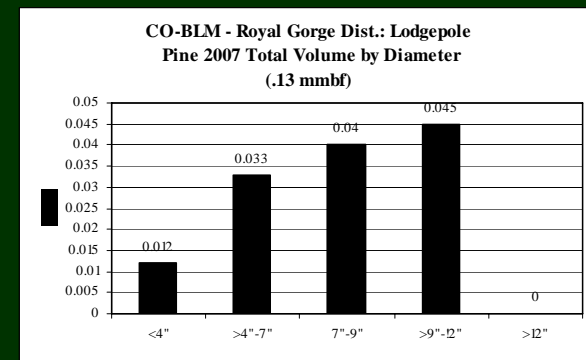
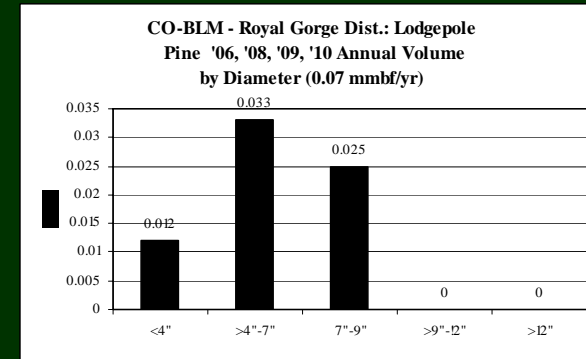
Colorado: Lodgepole Pine CROP offering '06 – '10
(by agency)

ROM # LP 1.3

gT = green tons (up to 7" dbh)
S = small log mmbf (>7"-12" dbh)
L = large log mmbf (>12" dbh)

Detailed Breakout by Supplier

Lodgepole Pine CO-BLM: Royal Gorge Dist.	5-yr = .41 mmbf
	<ul style="list-style-type: none"> Fairly level supply from year to year
gT = 1,125	<ul style="list-style-type: none"> <4" = 15% (.06 mmbf) >4"-7" = 40% (.135 mmbf)
S = .185	<ul style="list-style-type: none"> >7"-9" = 36% (.14 mmbf) >9"-12" = 11% (.045 mmbf) <12" = 0% (0 mmbf)
L = 0	<ul style="list-style-type: none"> >12" = 0% (0 mmbf)



SO . . . with CROP, we're able to look at:

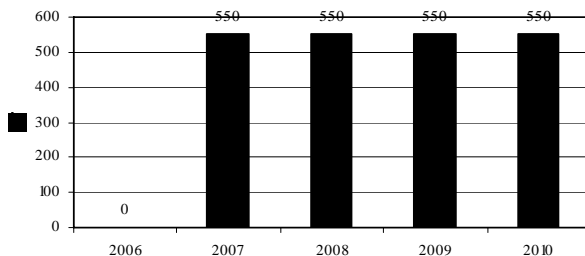
- performance between different public agencies to identify needed coordination of supply; and
- performance between ranger districts in a single NF to see where coordination of supply offering might be needed .

Let's take a look ...

Lodgepole Pine: Arapaho/Roosevelt NF – 4 RDs – biomass offerings

Clear Creek RD

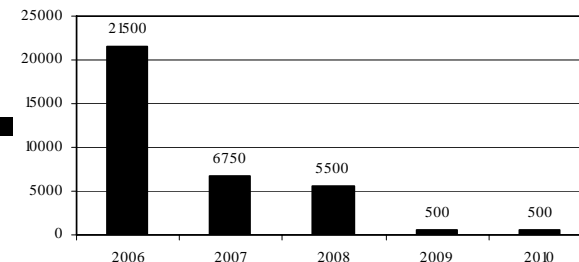
Arapaho/Roosevelt NF - Clear Creek RD:
Lodgepole Pine Total 5-yr Biomass
(up to 7" dbh) by Specie (2,200 gT)



3%

Sulphur RD

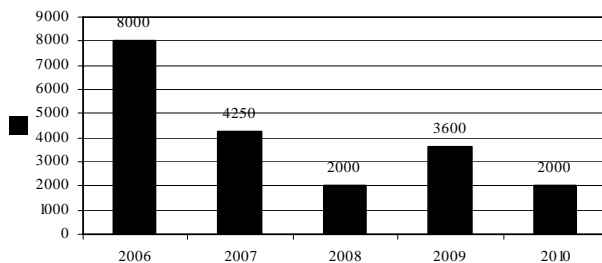
Arapaho/Roosevelt NF - Sulphur Springs RD: Lodgepole
Pine Total 5-yr Biomass
(up to 7" dbh) by Specie (34,750 gT)



50%

Canyon Lakes RD

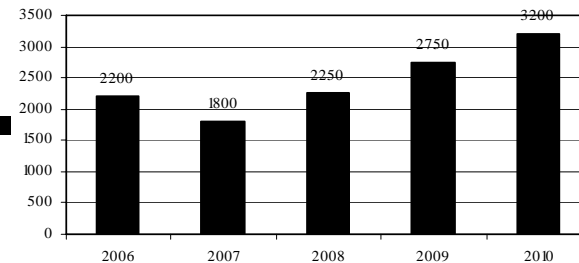
Arapaho/Roosevelt NF - Canyon Lakes RD: Lodgepole
Pine Total 5-yr Biomass
(up to 7" dbh) by Specie (19,850 gT)



29%

Boulder RD

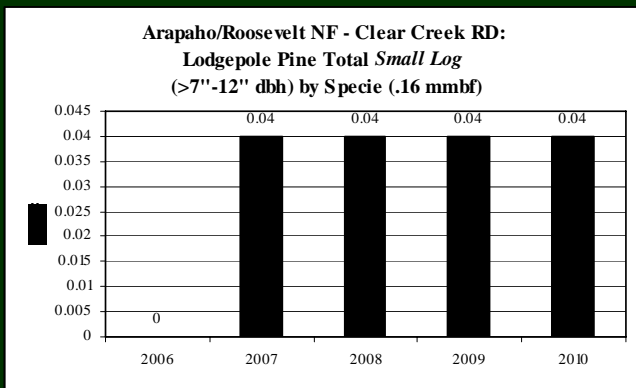
Arapaho/Roosevelt NF - Boulder RD: Lodgepole Pine
Total 5-yr Biomass
(up to 7" dbh) by Specie (12,200 gT)



18%

Lodgepole Pine: Arapaho/Roosevelt NF – 4 RDs – small log offerings

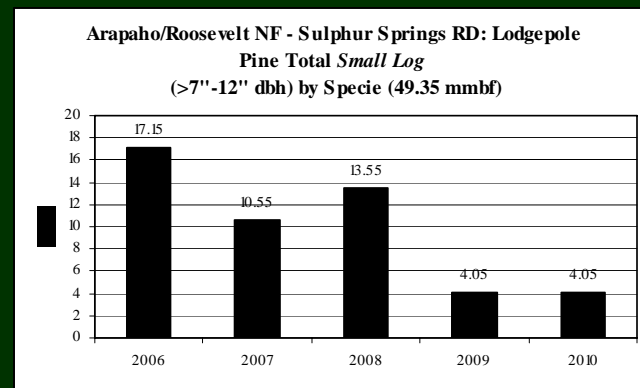
Clear Creek RD



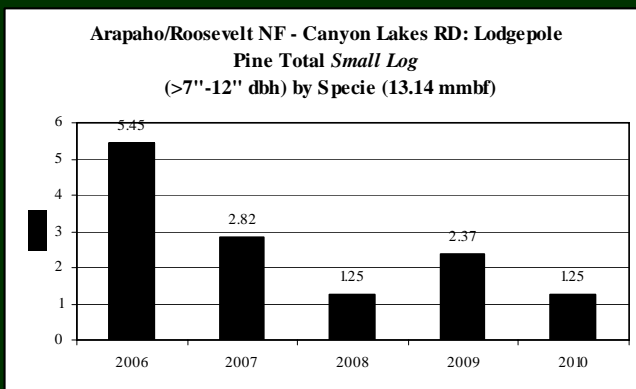
<1%

78%

Sulphur RD



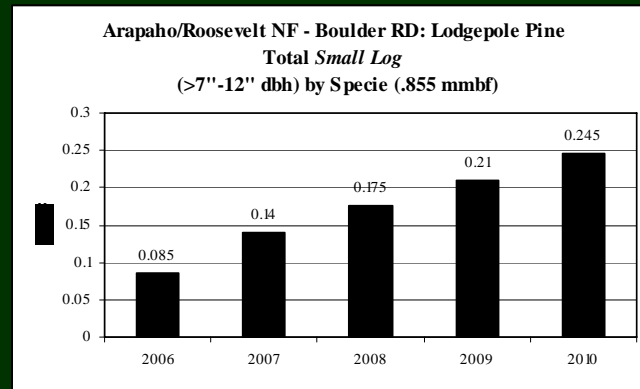
Canyon Lakes RD



21%

1%

Boulder RD

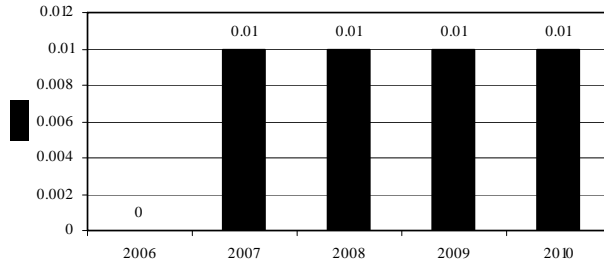


Colorado CROP

Lodgepole Pine: Arapaho/Roosevelt NF – 4 RDs – large log offerings

Clear Creek RD

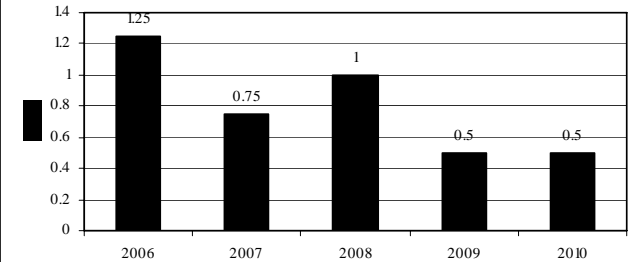
Arapaho/Roosevelt NF - Clear Creek RD:
Lodgepole Pine Total 5-yr Large Log
(>12" dbh) by Specie (.04 mmbf)



1%

Sulphur RD

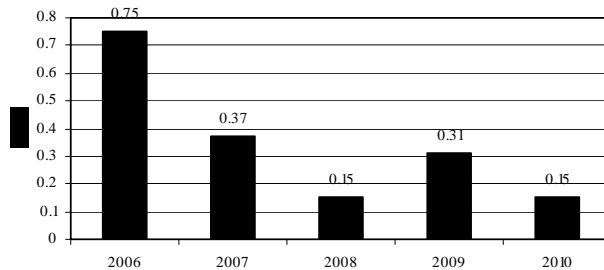
Arapaho/Roosevelt NF - Sulphur Springs RD: Lodgepole
Pine Total 5-yr Large Log
(>12" dbh) by Specie (4 mmbf)



68%

Canyon Lakes RD

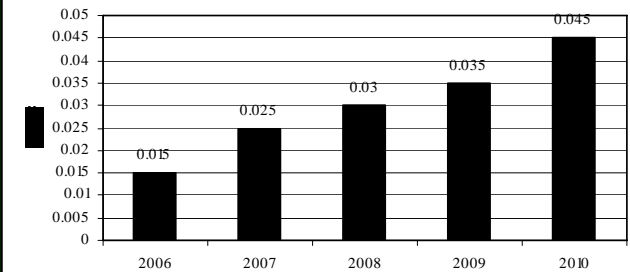
Arapaho/Roosevelt NF - Sulphur Springs RD: Lodgepole
Pine Total 5-yr Large Log
(>12" dbh) by Specie (1.73 mmbf)



29%

Boulder RD

Arapaho/Roosevelt NF - Boulder RD: Lodgepole Pine
Total 5-yr Large Log
(>12" dbh) by Specie (.15 mmbf)



3%

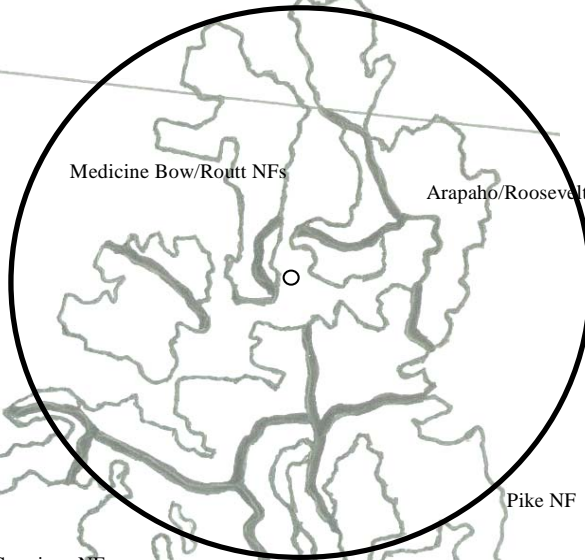
Let's look at species Summary Sheets for the other top Colorado CROP species . . .

Colorado CROP

Colorado: **Ponderosa Pine CROP** offering '06 - '10
 (gT = 42,287.87 / S = 24.38 mmbf / L = 5.54 mmbf)

ROM # PP.1

gT = green tons (up to 7" dbh)
 S = small log mmbf (>7"-12" dbh)
 L = large log mmbf (>12" dbh)



CO-Counties: 2 Counties 4%
 (gT = 2,337 / S = .701 / L = .191)

San Isabel NF: 2 RDs - 26%
 (gT = 2,093.75 / S = 7.181 / L = 2.444)

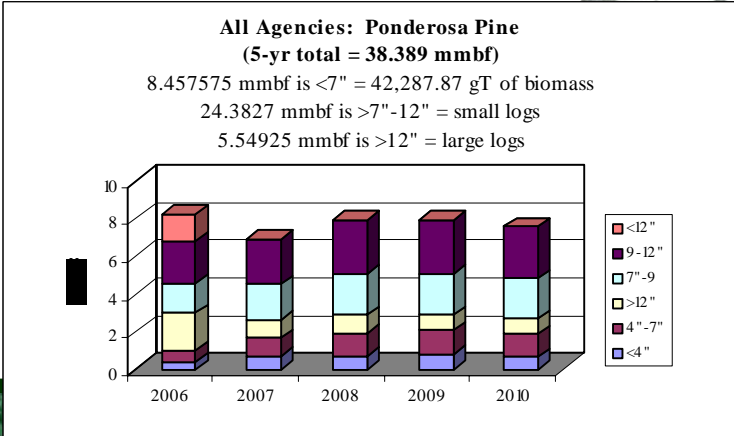
CO-DNR: - 7%
 (gT = 0 / S = 1.41 / L + 1.41)

CO-BLM: 1 district - 3%
 (gT = 4,950 / S = 0 / L = 0)

WY-BLM: 1 district - 5%
 (gT = 0 / S = 1.75 / L = 0)

Arapaho/Roosevelt NF: 3 RDs - 16%
 (gT = 25,370 / S = 1.015 / L = .19)

Pike NF: 3 RDs - 39%
 (gT = 7,536.6 / S = 12.324 / L = 1.313)



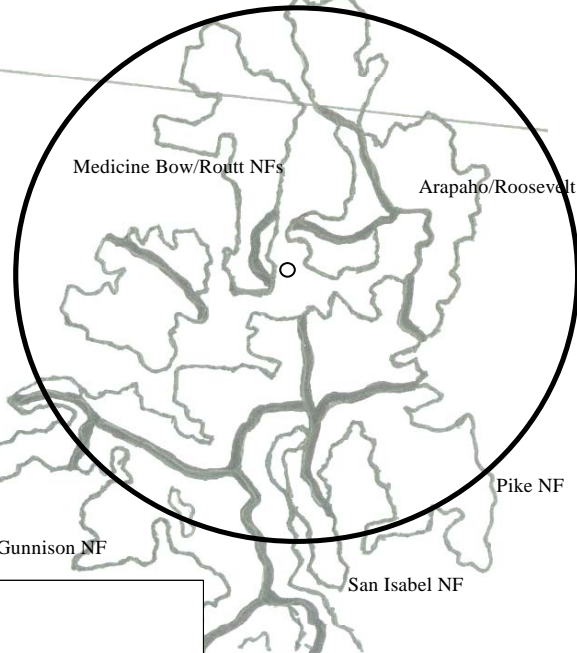
	(gT)	mmbf	
	Biomass (gT)	Small Logs	Large Logs
2006	4878.125	5.22145	2.00825
2007	8253.75	4.23675	0.9755
2008	9531	5.0465	0.9575
2009	10349.75	5.0055	0.7975
2010	9275.25	4.8725	0.8105
Totals	42287.875	24.3827	5.54925
%	22%	64%	14%
	8.457575		

Colorado CROP

Colorado: Douglas Fir CROP offering '06 - '10
 (gT = 62,038.25 / S = 10.65165 / L = 2.425 mmbf)

ROM # DF 1

gT = green tons (up to 7" dbh)
 S = small log mmbf (>7"-12" dbh)
 L = large log mmbf (>12" dbh)



Pike NF: 3 RDs - 48%
 (gT = 13,833 / S = 7.5816 / L = 2)

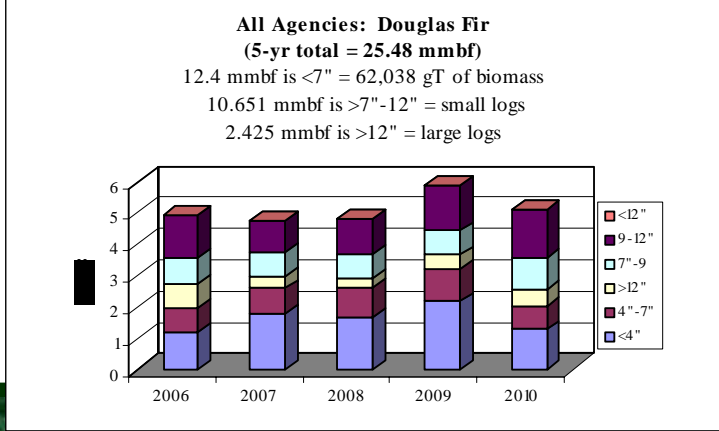
CO-BLM: 1 district - 4%
 (gT = 0 / S = 1 / L = 0)

WY-BLM: 1 district - 3%
 (gT = 0 / S = .75 / L = 0)

CO-Counties: 1 County 5%
 (gT = 2,231.2 / S = .6587 / L = .191)

Arapaho/Roosevelt NF: 1 RD - 34%
 (gT = 43,880 / S = 0 / L = 0)

San Isabel NF: 2 RDs - 5%
 (gT = 2,093.5 / S = .6612 / L = .2337)



	(gT)	mmbf	
	Biomass (gT)	Small Logs	Large Logs
2006	9781.5	2.17715	0.7834
2007	12911.25	1.81225	0.3635
2008	13120.75	1.889	0.31025
2009	16152	2.232	0.4265
2010	10072.75	2.54125	0.54225
Totals	62038.25	10.65165	2.4259
%	49%	42%	10%
	12.40765		

Colorado CROP

Colorado: **Engelmann Spruce** CROP offering '06 - '10
 (gT = 3,500 / S = 7.5018 mmbf / L = 7.2143 mmbf)

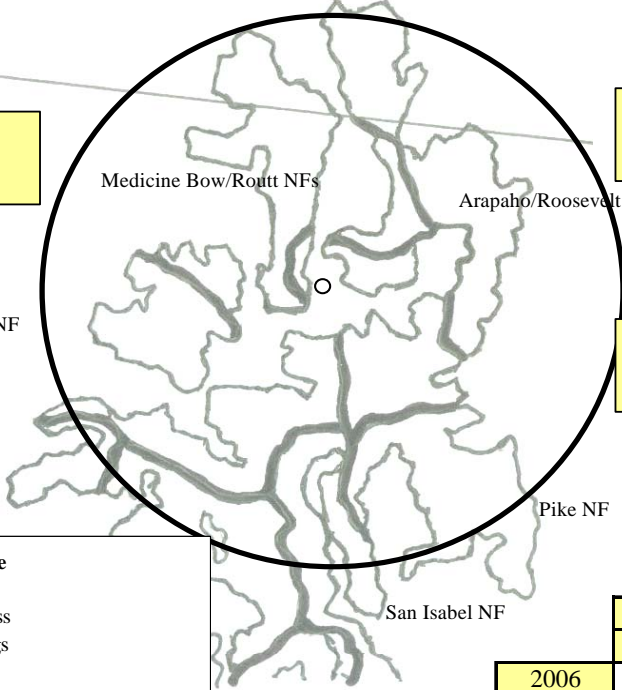
ROM # ES 1

gT = green tons (up to 7" dbh)
 S = small log mmbf (>7"-12" dbh)
 L = large log mmbf (>12" dbh)

WY
CO

Medicine Bow/Routt NF: 5 RDs - 49%
 (gT = 0 / S = 2.0575 / L = 5.49)

CO-DNR: <1%
 (gT = 0 / S = .0143 / L = .0143)

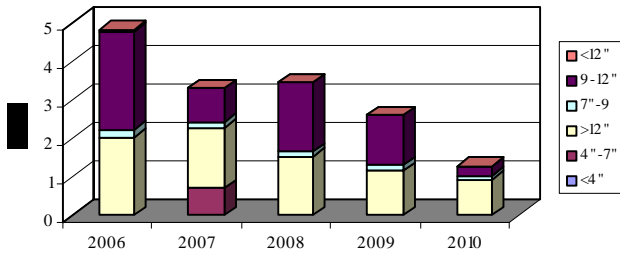


Grand Mesa NF: 2 RDs - 7%
 (gT = 3,500 / S = .23 / L = .16)

White River NF: 2 RDs - 44%
 (gT = 0 / S = 5.2 / L = 1.55)

All Agencies: Engelmann Spruce
 (5-yr total = 15.416 mmbf)

.7 mmbf is <7" = 3,500 gT of biomass
 7.5018 mmbf is >7"-12" = small logs
 7.2143 mmbf is >12" = large logs



	(gT)	mmbf	
	Biomass (gT)	Small Logs	Large Logs
2006	0	2.77579	2.03129
2007	3500	1.009	1.594
2008	0	1.917	1.529
2009	0	1.4575	1.1465
2010	0	0.3425	0.9135
Totals	3500	7.50179	7.21429
%	5%	49%	47%
	0.7		



How levelized will the supply be?

Let's take a look . . .

Levelized supply for five years?

(R = relatively; NA = Not applicable)

	gT Biomass		Small Logs		Large Logs	
	yes	no	yes	no	yes	no
<i>Lodgepole Pine</i>	R			✓	R	
<i>Ponderosa Pine</i>	R		R			✓
<i>Douglas Fir</i>		✓	✓		R	
<i>Engelmann Spruce</i>		✓		✓		✓
<i>Subalpine Fir</i>		✓	R		R	
<i>Pinyon Pine/Juniper</i>	R		R		R	
<i>Limber Pine</i>	NA		✓		NA	
<i>Pinyon Pine</i>	NA		✓		NA	
<i>Juniper</i>	✓		✓		✓	
<i>Gambel Oak</i>		✓	NA		NA	
<i>Blue Spruce</i>		✓		✓		✓
<i>Other Conifers</i>	NA			✓		✓
<i>Aspen</i>		✓		✓		✓

Looking at the lodgepole pine. . .

- ✓ There will be a levelized supply of green tonnage biomass and large log supply
- ✓ This is important as the specie will comprise 54% of the total CROP gT biomass and 84% of the total CROP large log supply, *but ...*
- ✓ There will be an unlevelized supply of small logs in this specie that will comprise 80% of the total CROP small log supply.

Here's how it looks on an agency-by-agency basis . . .

Levelized Supply?

Not a desired picture for lodgepole pine.

<i>R = relatively</i>	<u>Lodgepole Pine (295.84 mmbf)</u>		
	yes	no	Comments
Medicine Bow/Routt NF			
Brush Creek/Hayden		✓	from 8.3 mmbf to .32 mmbf
Laramie	R		fairly level supply from year to year
Hahns Peak/Bears Ear		✓	notable drop in supply in 2010
Parks		✓	from 15 mmbf to 3 mmbf
Yampa	✓		level supply from year to year
White River NF			
Aspen/Sopris		✓	no volume in '07 & '08; then unlevel supply from year to year
Dillon		✓	from 2.9 mmbf to 12.6 mmbf
Holy Cross/Eagle		✓	from 2.5 mmbf to 11.2 mmbf
Blanco		✓	from .25 mmbf to 2 mmbf
Rifle		✓	from .1 mmbf to 2 mmbf
Arapaho/Roosevelt NF			
Clear Creek	R		from .03 mmbf to .08 mmbf
Sulphur		✓	from 22 mmbf to 4 mmbf
Canyon Lakes		✓	from 7.8 mmbf to 1.8 mmbf
Boulder	R		fairly level supply from year to year

Overall . . . *better coordination of resource offering in lodgepole pine, Douglas fir, and Engelmann spruce* likely preferred to help:

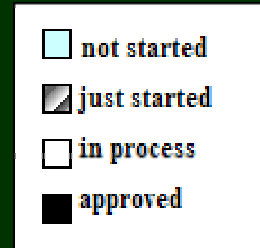
- **Reduce investor risk**
- **Increase purchaser confidence**
- **Achieve fuel load reduction goals**
- **Achieve forest restoration goals**

What about NEPA?
It's important to know!

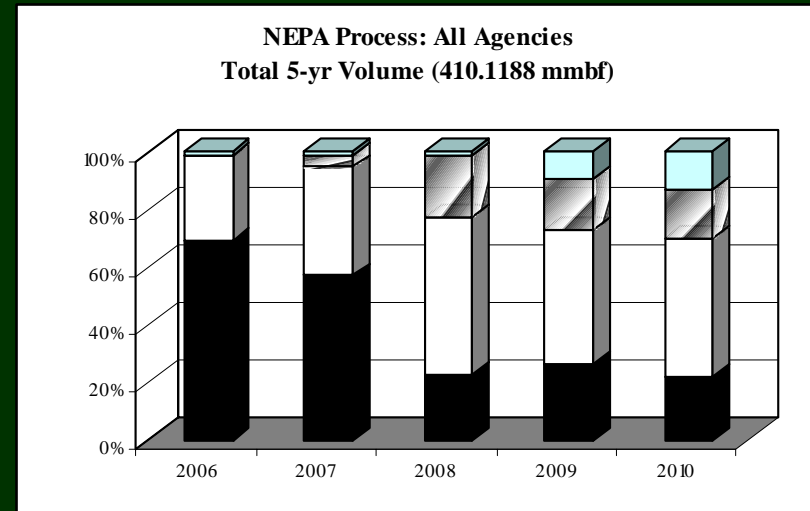
... here's how it looks

NEPA Picture for CROP Landscape

All NF & BLM lands:
 88% of 5-yr total = (410.11 mmbf; includes gT as mmbf)



	<i>mmbf</i>	<i>% of total</i>
<i>Approved</i>	169.15	41%
<i>In process</i>	174.84	43%
<i>Just started</i>	47.65	12%
<i>Not started</i>	18.48	5%



Over 80% of CROP resource offering either NEPA approved or in-process



... but story best told on agency-by-agency basis.

NEPA Risk Rating

1 Lowest	2 Low	3 Medium	4 High	5 Highest
-------------	----------	-------------	-----------	--------------

For low risk rating, 3 key desired attributes:

- ✓ Volume *approved* in first 2 years, followed by *in-process*.
- ✓ Consistency in supply; no dramatic gaps from year to year (eg: *approved/not started/in-process*).
- ✓ Overall – no major emphasis on *just started* or *not started*.

Medicine Bow/Routt NF

		NEPA Risk Rating
Brush/Creek/Hayden	20 mmbf	medium
Laramie	24 mmbf	medium
Hahns Peak/Bears Ear	14 mmbf	medium
Parks	49 mmbf	lowest
Yampa	27 mmbf	medium

White River NF

		NEPA Risk Rating
Aspen/Sopris	2.2 mmbf	highest
Dillon	36 mmbf	high
Holy Cross/Eagle	28 mmbf	highest
Blanco	6 mmbf	high
Rifle	5 mmbf	high

Arapaho-Roosevelt NF

NEPA
Risk
Rating

		NEPA Risk Rating
Clear Creek	1.28 mmbf	lowest
Sulfur	60 mmbf	medium
Canyon Lakes	29 mmbf	low
Boulder	6.8 mmbf	low

Grand Mesa, U & G NF

NEPA
Risk
Rating

		NEPA Risk Rating
Grand Valley	3.2 mmbf	lowest
Gunnison	.23 mmbf	lowest
Paonia	1.6 mmbf	highest

Pike NF

NEPA
Risk
Rating

		NEPA Risk Rating
Pikes Peak	6.5 mmbf	lowest
South Platte	8 mmbf	low
South Park	13 mmbf	lowest

San Isabel NF

NEPA
Risk
Rating

		NEPA Risk Rating
Leadville	5.3 mmbf	high
Salida	9.5 mmbf	highest

Colorado BLM		NEPA Risk Rating
Royal Gorge	.41 mmbf	low
White River	4.1 mmbf	highest
Little Snake	1 mmbf	high
Glenwood Springs	9.7 mmbf	highest
Kremmling	8.4 mmbf	highest

Wyoming BLM		NEPA Risk Rating
Rawlins	5 mmbf	highest

What about road access to supply? Here's how it looks . . .

Agency	5-yr total volume	Affected by No Current Road Access		
	mmbf	mmbf	% of total volume with no road access	Species affected
CO BLM	23.816	0	0%	
WY BLM	5	5	100%	LP, DF, PP, Lim P, Pp
Arapaho/Roosevelt NF	98.28	3.1	3%	LP, PP
Grand Mesa, U & G NFs	5.03	3.2	64%	ASP
Medicine Bow/Routt NF	147.156	0	0%	
Pike NF	27.592	0	0%	
San Isabel NF	14.875	0	0%	
White River NF	88.37	8.85	10%	LP, ES
WY State Forestry Div.	3.533	.75	21%	LP
CO Counties	2.994	.067	2%	LP
CO-DNR	45.324	0	0%	
Total	461.9695	20.967	5%	

Conclusions for Colorado CROP

Not a bad picture. . .

- ✓ Total annual volume may be sufficient to ***invite investment in small log processing*** and create viable options for biomass to energy use.

- ✓ ***Sufficient volume already NEPA approved or in-process*** to reduce investor risk and increase purchaser confidence.

but . . .

- ✓ ***Levelizing of supply between agencies from year to year is needed*** – especially for lodgepole pine.

For more information:

Catherine M. Mater:

President—Mater Engineering
Senior Fellow – The Pinchot Institute for Conservation
Corvallis, Oregon; Washington, DC
tel: (541) 753-7335 fax: (541) 752-2952; cell: (541) 760-5526
E-mail: catherine@mater.com

Edmund Gee:

Nat'l Woody Biomass Utilization Team Leader
Nat'l Partnership Coordinator USFS
Washington DC
tel: (202) 205-1787 fax: (202) 205-1045 cell: (202) 236-5153
E-mail: eagee@fs.fed.us