

# Transpiration of cottonwood/willow forest estimated from sap flux

Sean M. Schaeffer<sup>a,b,\*</sup>, David G. Williams<sup>a</sup>, David C. Goodrich<sup>c</sup>

<sup>a</sup> School of Renewable Natural Resources, The University of Arizona, Tucson, AZ 85721, USA

<sup>b</sup> Department of Biological Sciences, University of Arkansas, 601 Science and Engineering Bldg., Fayetteville, AR 72701, USA

<sup>c</sup> Southwest Watershed Research Center, USDA-ARS, Tucson, AZ 85719-1596, USA

## Abstract

Cottonwood/willow forests in the American Southwest consist of discrete, even-aged vegetation patches arranged in narrow strips along active and abandoned stream channels of alluvial flood plains. We used the heat-pulse velocity technique in this study to estimate transpiration in 12 such forest patches along a perennially flowing reach of the San Pedro River in southeastern Arizona, USA during five periods from April to October 1997. Transpiration per unit sapwood area was consistently higher for the larger cottonwood trees found on outer secondary channels compared to that of smaller cottonwood trees along the active channel, but statistically significant differences were found only in August and October. Conversely, transpiration per unit sapwood area in willow was markedly higher for trees along the primary channel than for those few larger trees that were sampled on the outer margins of the forest. Average daily transpiration at the canopy scale among the patches in July was  $4.8 \pm 0.7$  mm per day and ranged from  $5.7 \pm 0.6$  mm per day in young forest patches adjacent to the primary stream channel to  $3.1 \pm 0.6$  mm per day in more successional advanced patches on secondary channels. Differences in our estimates of transpiration between forest patches along primary and secondary stream channels were related to differences in the ratio of sapwood area to ground area of the forest patches, and leaf area index. Estimates of transpiration from this forest type, and projections of transpiration and groundwater flux over larger areas on the San Pedro River, should take into account structural variation in these forests that relate to population dynamics of dominant trees. © 2000 Published by Elsevier Science B.V.

*Keywords:* Sap flow; Transpiration; Patch dynamics; Forest structure; Cottonwood; Willow; *Salix goodingii*; *Populus fremontii*

## 1. Introduction

Riparian forests of arid and semi-arid regions of western North America are occupied by drought intolerant tree species that rely on shallow groundwater for establishment, growth, and transpiration (Smith et al., 1991; Busch et al., 1992; Stromberg, 1993; Snyder and Williams, this issue). Forests dominated by cottonwood (*Populus*) and willow (*Salix*),

for instance, are locally restricted to primary floodplains of rivers, streams, and dry washes where groundwater is no deeper than about 5 m (Reichenbacher, 1984; Asplund and Gooch, 1988; Stromberg, 1998). Persistence of these forests depends on disturbance; local regeneration is controlled by flooding that destroys existing vegetation and creates “safe sites” for seedling establishment on scoured and exposed sand bars (Stromberg, 1993). Because of very localized patterns of seedling establishment and bank erosion, cottonwood/willow forests are characteristically comprised of discrete, even-aged “patches” arranged in narrow strips along active and abandoned stream channels (Bradley and Smith, 1985; Johnson, 1994). As forest patches age, they

\* Corresponding author. Present address: Department of Biological Sciences, University of Arkansas, 601 Science and Engineering Bldg., Fayetteville, AR 72701, USA. Tel.: +1-501-575-7057; fax: +1-501-575-4010.

E-mail address: smschae@comp.uark.edu (S.M. Schaeffer).

become less dense because of mortality. Eventually these patches become dominated by just a few very large cottonwood and willow individuals (Stromberg, 1998).

Cottonwood/willow forests potentially transpire large quantities of groundwater from channel aquifers. Structural dynamics at local scales in these forests, therefore, may have important ramifications for transpiration at larger scales. It is not known, for instance, if transpiration from these forest patches declines during succession as trees become separated from the active stream channel or if individuals that survive in a patch develop higher transpiration rates due to competitive release. Enhanced growth and gas exchange is commonly observed in trees released from competition following artificial forest thinning (Kozlowski et al., 1991). Linking patch dynamics and transpiration in these forests, therefore, may be useful for modeling catchment-scale hydrologic dynamics in flood plain environments in the southwest.

There are few estimates of the magnitude or spatial and temporal heterogeneity of transpiration fluxes in arid and semi-arid riparian forests. In particular, the unique structure of southwestern cottonwood/willow forests precludes the use of micrometeorological approaches for transpiration estimates (but see Hipps et al., 1997). Here, we use the heat-pulse velocity (HPV) method to characterize spatial and seasonal variability of transpiration from cottonwood/willow forest in southeastern Arizona as a contribution to the Semi-Arid Land-Surface-Atmosphere (SALSA) program field campaigns in the riparian ecosystem on the San Pedro River (see Goodrich et al., this issue for overview). Estimates of whole-tree transpiration from HPV sensors tend to differ by less than 15% from cut-tree (potometer) measurements (Olbrich, 1991; Smith, 1991; Barret et al., 1995; Hatton et al., 1995). In homogeneous broad-leaf and coniferous forests, estimates of transpiration from the HPV method agree favorably to estimates from micrometeorological methods such as Bowen ratio and eddy covariance (Kelliher et al., 1992; Loustau et al., 1996; Saugier et al., 1997).

Since establishment of cottonwood and willow seedlings does not occur beneath existing cottonwood/willow canopies, we hypothesized that transpiration should decline systematically as patches of this vegetation type age and thin. Thus, we predicted that

transpiration on a canopy area basis would be lower in forest patches consisting of large trees found on secondary stream channels than in recently established patches along the active primary channels.

## 2. Materials and methods

### 2.1. Study site

Our study was conducted along a perennially flowing reach of the San Pedro River (Lewis Springs study site; 31°33'N, 110°07'W; 1250 m elevation) within the San Pedro National Riparian Conservation Area in southeastern Arizona, USA. The riparian forest vegetation consisted of Frémont cottonwood (*Populus fremontii* Wats.) and Gooding willow (*Salix goodingii* Ball) as dominant and sub-dominant overstory species, respectively. Mesquite (*Prosopis velutina* Woot.) and seep-willow (*Baccharis glutinosa* Pers.) formed a sparse woody understory. Patches of cottonwood/willow riparian forest were located along both the primary stream channel and along dry secondary channels.

### 2.2. HPV estimates of transpiration

HPV probes (Thermal Logic, Pullman, WA) were implanted in cottonwood and willow trees of differing diameters proportional to the range of tree basal diameter classes determined from vegetation surveys. Vegetation surveys consisted of four belt transects on each side of the stream channel and extended to the edge of the riparian forest. Transects were 30 m wide and were divided into 10-m long sections. Total counts of individual trees, as well as their corresponding diameters (diameter at approximately 1.35 m height), were recorded for cottonwood and willow.

Transpiration was estimated using the HPV method for five periods during the 1997-growing season: 20 and 21 April, 6–10 June, 10–13 July, 11–16 August, and 11–16 October. Nine cottonwood trees were selected with diameters ranging from 0.14 to 0.75 m. Six willow trees were selected with diameters ranging from 0.15 to 0.24 m. Each tree, depending on its diameter, received from three to five probes, placed equidistant around the trunk. Bark was removed until

the cambium was exposed and sensors were inserted into holes drilled parallel with the grain of the wood. Before insertion, probes were coated with silicone gel to ensure good thermal contact between probe elements and sapwood. After insertion, exposed cambium was covered with silicone gel to reduce evaporation from the wood surface, and then covered with aluminum foil to reduce effects of ambient temperature fluctuations and solar radiation.

Four independent data logger (CR10X, Campbell Scientific, Logan, UT) and control systems with multiplexors (AM416, Campbell Scientific, Logan, UT), relay drivers (A21REL-12, Campbell Scientific, Logan, UT), and 12-V marine batteries were used to generate heat pulses and monitor their travel through the xylem. Eight-second heat pulses were produced by the upstream heating elements. Three downstream thermocouples (at 10, 20, 30 mm depth into the xylem) measured xylem temperature for 60 s after initiation of the heat pulse. Sap velocity  $V$  ( $\text{cm h}^{-1}$ ) was calculated from Cohen et al. (1981) as

$$V = r \frac{(1 - t_m/t_{m0})^{1/2}}{t_{m0}} \quad (1)$$

where  $r$  is the distance between heater and thermocouple (6 mm),  $t_m$  the time to maximum recorded temperature, and  $t_{m0}$  is the time to maximum temperature at zero flow (assumed to be at pre-dawn, 02:00–04:00 h). The HPV method has been shown, through numerical analysis, to be less accurate at low sap velocities than at higher sap velocities (Swanson and Whitfield, 1981; Barret et al., 1995). Based on conservative calculations from formulas described by Swanson and Whitfield (1981), velocities below  $10 \text{ cm h}^{-1}$  were ignored and assumed to be 0. Mass flow of sap  $J$  (volume per unit time) was calculated from Cohen et al. (1981) as

$$J = \frac{\rho c}{\rho_w c_w} \sum V_i A_i \quad (2)$$

where  $\rho c$  and  $\rho_w c_w$  are the volumetric specific heats ( $\text{MJ m}^{-3} \text{ per } ^\circ\text{C}$ ) of wet wood and water, respectively.  $V_i$  and  $A_i$  are the sap velocity and the cross-sectional area of the  $i$ th increment of sapwood being measured by a thermocouple. The volumetric specific heat of wet wood ( $\rho c$ ) was determined during the presumed period of zero flow (02:00–04:00 h) using the relationship for dissipation of a heat pulse with no fluid correction developed by Campbell et al. (1991):

$$\rho c = \frac{Q}{e\pi r^2 \Delta T_m} \quad (3)$$

where  $\Delta T_m$  is the maximum temperature rise recorded by the thermocouple.  $Q$  is the heat input ( $\text{J m}^{-1}$ ) of the heat pulse calculated as

$$Q = I^2 \left( \frac{R_h}{L} \right) \quad (4)$$

where  $t$  is the heating time (8 s),  $I$  the heater current, and  $R_h/L$  is the resistance per meter of the heater (in this case,  $1141 \text{ W m}^{-1}$ ). Gravimetric assessment of  $\rho c$  was identical to  $\rho c$  calculated using zero-flow.

Transpiration ( $E$ ) was expressed as sap flux on a sapwood area basis. In order to calculate sap flux ( $\text{g cm}^{-2} \text{ h}^{-1}$ ) for a given tree,  $J$  (Eq. (2)) was divided by the sapwood area of the tree. The amount of sapwood area was determined by taking an increment core and discriminating between sapwood and heartwood based on color differences. By expressing  $E$  in terms of sapwood area, all the trees within the sample area could be directly compared. This final step in calculating  $E$  for a single tree normalizes  $E$  with respect to sapwood area.

HPV sensors were compared with temperature difference probes (Dynamax, Houston, TX) to gauge the comparative reliability of our estimates. Temperature difference probes (TDPs) use a constant heat-balance method to estimate sap flux similar to the method outlined by Granier (1985, 1987). In June 1997, both probe types were implanted in a single cottonwood tree and sap flow was recorded for 2 days. A relatively young tree was chosen for comparison to minimize effects of probe placement; younger trees generally have uniform grain and xylem structure and are less likely to show positional effects.

### 2.3. Aggregation

Transpiration estimates for different forest patches and the entire stand were derived from scaling of the direct measurements of the amount of water used by individual trees of each species and size class (Kelliher et al., 1992; Hatton et al., 1995; Granier et al., 1996). Data from the HPV method yielded transpiration in terms of the sapwood area of a given tree.

To relate sapwood area to an easily measured parameter, 19 cottonwood and 29 willow trees were cored and measured for diameter and sapwood area.

As stated previously, sharp transitions from lightly colored, apparently active xylem, to darkly colored and water saturated wood was used to distinguish between the sapwood and heartwood boundary. Data for tree diameters from forest patches were then converted to sapwood area using predictive equations generated from regression analysis. Sapwood area estimates were combined with estimates of  $E$  for aggregation.

Estimation of patch and stand transpiration on a canopy area basis was extrapolated from individual tree sapwood flux using sapwood area for cottonwood and willow and projected canopy area of forest patches. Twelve forest patches were selected representing five newly established and seven successional advanced patches in which projected canopy area

could be assessed digitally using aerial photographs (Fig. 1). The diameter of all cottonwood and willow trees in each patch and the canopy area ( $m^2$ ) of each patch was measured (Table 1). Combined cottonwood and willow sapwood area of each forest patch was estimated using sapwood area-to-diameter relationships previously developed. Sapwood area of clusters and average  $E$  (sapwood area basis) calculated from individual trees were used to estimate the total flow of water ( $mm\ d^{-1}$ ) from a forest patch.

#### 2.4. Error estimates of transpiration

The error associated with estimates of patch- and stand-level transpiration was a function of the error

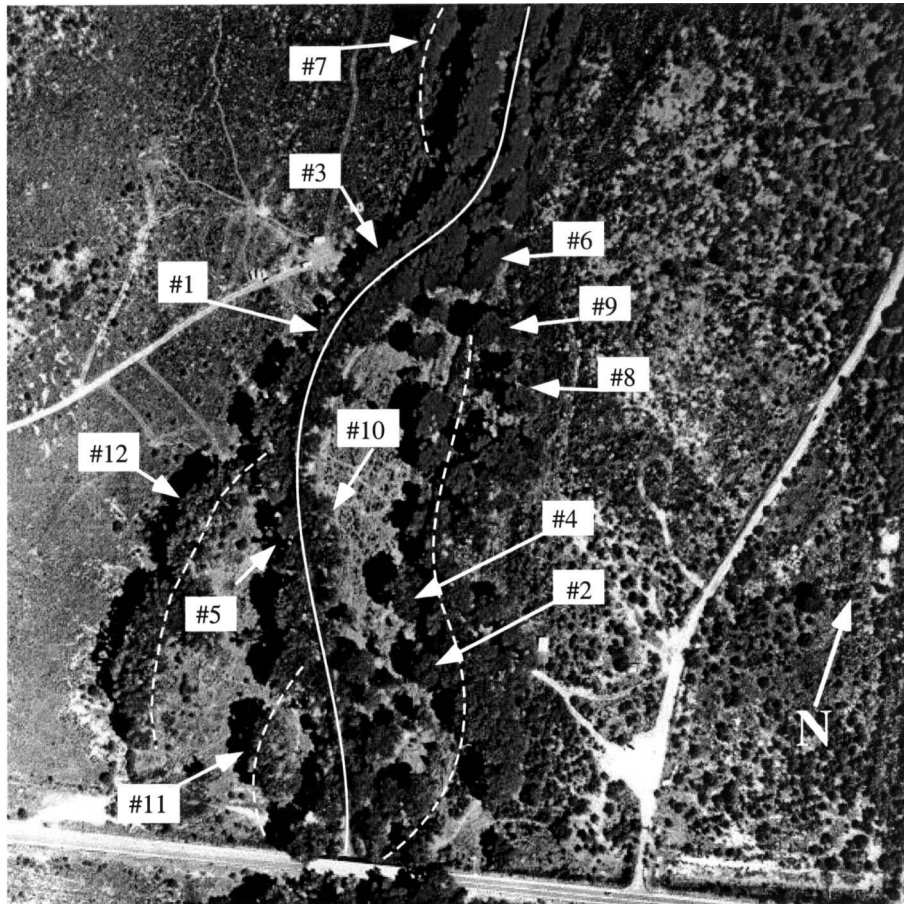


Fig. 1. Aerial view of the Lewis Springs study site on the San Pedro River in southeastern Arizona. The image depicts the location of the forest patches selected for comparisons of transpiration on primary (solid line) and secondary (dashed line) stream channels.

Table 1  
Stand structural characteristics for 12 patches of riparian forest vegetation at the Lewis Springs study site on the San Pedro River in southeastern Arizona<sup>a</sup>

Position	Patch number	Canopy area (m <sup>2</sup> )	Stems		Sapwood area/canopy area (cm <sup>2</sup> m <sup>-2</sup> )		
			Cottonwood	Willow	Cottonwood	Willow	% Willow
Primary	1	444	8	14	13.8	7.1	34
	3	643	31	25	15.8	3.9	20
	5	756	4	13	5.0	4.8	49
	6	800	33	43	18.1	2.9	14
	10	1028	58	13	16.4	1.3	7
Mean		734 (95)	26.8 (9.7)	21.6 (5.8)	13.8 (2.3)	4.0 (1.0)	25 (8)
Secondary	2	462	2	5	3.9	1.3	25
	4	664	9	20	9.1	2.2	20
	7	814	4	0	6.1	0.0	0
	8	828	12	5	9.7	0.1	1
	9	997	2	8	4.6	0.3	5
	11	1421	13	7	9.8	0.9	8
	12	1985	41	1	17.9	0.2	1
Mean		1021 (196)	11.9 (5.2)	6.6 (2.5)	8.7 (1.8)	0.7 (0.3)	9 (4)

<sup>a</sup> Canopy area, number of stems, and sapwood area/canopy area ratio are given for patches located along the primary and secondary stream channels. Canopy area (m<sup>2</sup>) refers to the planar projected area of the canopy as seen from aerial photography. Percentage (%) willow refers to the percentage of the total sapwood area that willow contributes to a given patch. Mean values (and S.E. of mean in parenthesis) are shown for the structural characteristics of all patches on either primary or secondary stream channels.

estimates for each step in the aggregation scheme. The total error for a given patch of riparian vegetation was an additive function of the error in the estimation of sapwood area based on diameter for each tree in a given patch and the error in the estimation water flux on a sapwood area basis (g cm<sup>-2</sup> h<sup>-1</sup>) for the selected trees. For primary and secondary corridor forest, and the riparian forest as a whole, the total error was estimated by averaging the errors across patches.

### 2.5. Micrometeorological variables

Micrometeorological measurements of the bulk air flowing into the forest canopy were taken concurrent with sap flow measurements. Air temperature, relative humidity, and photosynthetic photon flux density (PPFD) were measured at 2.1 m height above the ground on an upper flood-plain terrace which placed the sensors approximately 5 m above the active stream channel where the riparian vegetation was located.

### 2.6. Leaf area index

Leaf area index (LAI) was estimated using a plant canopy analyzer (LAI-2000, LiCor, Lincoln, NE). LAI

was calculated for primary and secondary channel patches by averaging the individual estimates of LAI at eight points under the canopies of individual trees. Six trees (two in newly established and four in successional advanced patches) were selected for measurement. Point measurements of LAI were made at 3 and 7 m from the base of a given tree in the four cardinal directions. Since LAI was estimated under the canopies of selected trees, the measurement of LAI is considered relative because no accounting was made for the gap fraction.

## 3. Results

In addition to variation in size (canopy area, m<sup>2</sup>) and composition of the 12 riparian forest patches (Table 1), there were also differences in structure between patches located on primary and secondary stream channels. Patch canopy areas assessed from aerial photos (Fig. 1) ranged from 462 to 1985 m<sup>2</sup>. The percentage of sapwood area per unit canopy area contributed by willow ranged from 0 to 49% among patches. The average diameter of cottonwood and willow trees in patches (weighted by the relative

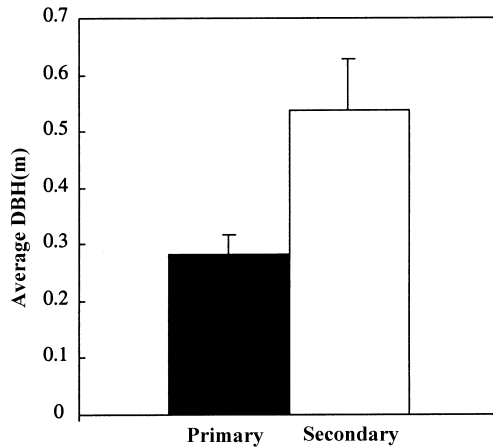


Fig. 2. Structural characteristics for forest patches on primary and secondary stream channels at the Lewis Springs study site on the San Pedro River in southeastern Arizona. Mean tree diameter at 1.35 m height (mean tree diameter is the weighted average for both cottonwood and willow trees based on the respective sapwood area contribution of each species within a given patch). The means were significantly different ( $p = 0.03$ ).

sapwood area contribution of each species to the patch, Fig. 2) was significantly ( $p = 0.03$ ) smaller within forest patches located along the primary channel ( $28 \pm 4$  cm) than in patches located along secondary ( $54 \pm 9$  cm) channels. Likewise, sapwood area to total canopy area ratios were higher for patches along the primary channel than for patches along secondary channels (Table 1). Generally, fewer willow trees were found along secondary channels.

Transpiration estimates for individual cottonwood and willow trees were averaged to calculate mean sap flux on a sapwood area basis ( $J_s$ ) for a given species, for trees located along the primary and secondary stream channels.  $J_{smax}$  was calculated for each tree as the mean of the three highest values of  $J_s$  over the course of a given day (Fig. 3).  $J_{smax}$  for cottonwood was consistently higher for trees along primary stream channels in June (day of year, DOY 158 and 159) and higher for trees along secondary stream channels in April, July, August, and October (DOY 111 and 112, 191–193, 223–227, and 285–288, respectively). But, significant differences ( $p < 0.05$ ) between  $J_{smax}$  of cottonwood along primary and secondary stream channel were found only in August and October (DOY 224 and 286, respectively). Conversely,  $J_{smax}$  for willow

was higher for trees along primary stream channels at all time periods except October. There were no days on which  $J_{smax}$  of willow trees was statistically different ( $p < 0.05$ ) between trees along primary and secondary channels, although sample size was relatively small ( $n = 2$ ). There were, however, apparent trends in the differences in  $J_{smax}$  between trees along primary and secondary stream channels for both species that justified separate calculations for these two patch types.

$J_s$  ( $\text{g cm}^{-2} \text{h}^{-1}$ ) for cottonwood and willow is shown in Figs. 4 and 5, respectively. For cottonwood (Fig. 4), maximum rates of  $J_s$  were low in April ( $12\text{--}25 \text{ g cm}^{-2} \text{h}^{-1}$  for primary channel trees and  $28\text{--}29 \text{ g cm}^{-2} \text{h}^{-1}$  for secondary channel trees) when leaves had just reached full expansion. Highest  $J_s$  ( $37.0 \pm 1.5 \text{ g cm}^{-2} \text{h}^{-1}$  for trees on the primary channel and  $44.4 \pm 12.5 \text{ g cm}^{-2} \text{h}^{-1}$  for trees on secondary channels) occurred in July when air temperatures and vapor pressure deficit were highest (data not shown). Lowest maximum  $J_s$  ( $12.5 \pm 3.2 \text{ g cm}^{-2} \text{h}^{-1}$  for trees on the primary channel and  $29.6 \pm 6.1 \text{ g cm}^{-2} \text{h}^{-1}$  for trees on secondary channels) occurred in October following a morning frost on day 285.  $J_s$  remained low for at least 4 days after the frost event. For both species, there was a reduction in  $J_s$  in August on day 224 when irradiance (PPFD,  $\mu\text{mol photons m}^{-2} \text{s}^{-1}$ ) was low due to cloud cover (data not shown).  $J_s$  for willow was much lower than that for cottonwood in April and October ( $J_s < 15 \text{ g cm}^{-2} \text{h}^{-1}$  for both patch types) while the highest  $J_s$  was observed in June ( $51.4 \pm 16.8 \text{ g cm}^{-2} \text{h}^{-1}$  for primary channel trees and  $31.6 \pm 5.2 \text{ g cm}^{-2} \text{h}^{-1}$  for secondary channel trees, Fig. 5). The sapwood area of all trees fitted with HPV probes was directly measured using increment cores, thus the error reported in the text above is due to the variance among trees.

An estimate of the daily transpiration of individual trees on a single day (DOY 159) is shown in Fig. 6. The largest cottonwood trees (those greater than 0.5 m in diameter) fitted with sensors were found to transpire between 200 and 500 l of water on a typical day. The range in size of willow trees at Lewis Springs was much smaller than that of cottonwood. Willow trees fitted with sensors transpired between 30 and 100 l of water per day on DOY 159.

The HPV sensors used in this study showed strong agreement with TDPs in estimations of transpiration

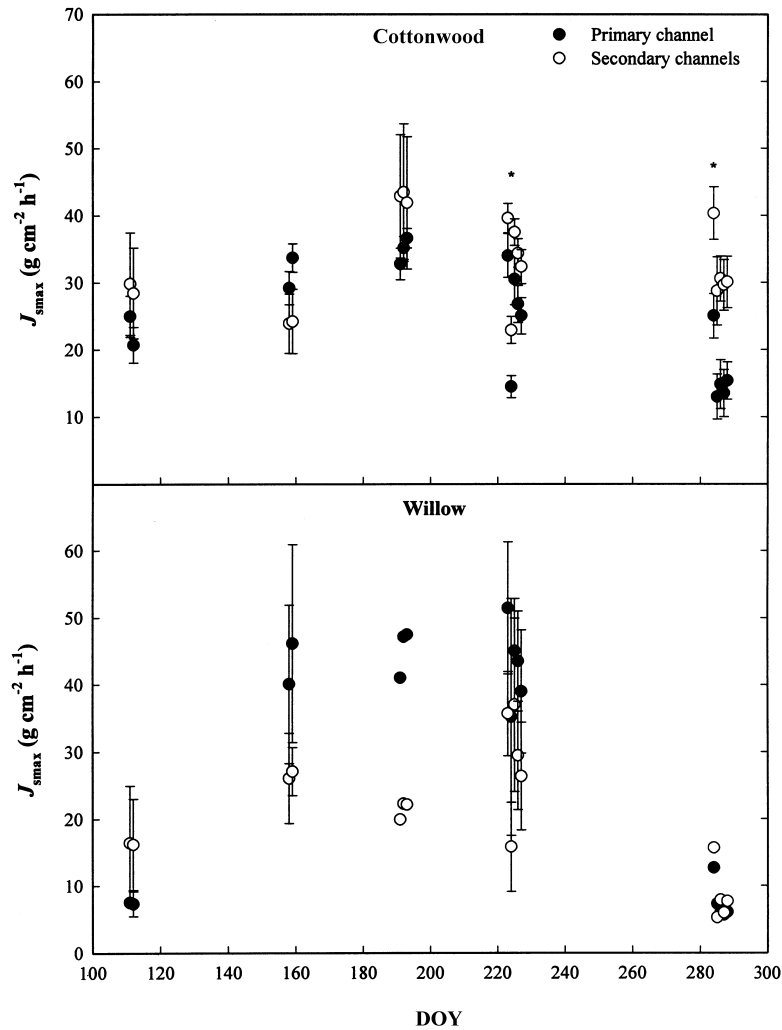


Fig. 3. Mean maximum daily sap flux on a sapwood area basis ( $J_{smax}$ ,  $g\ cm^{-2}\ h^{-1}$ ) for cottonwood (*P. fremontii*) and willow (*S. goodingii*) trees along primary (solid symbol) and secondary (open symbol) stream channels at the Lewis Springs site in 1997. Statistically significant differences ( $p < 0.05$ ) between  $J_{smax}$  of trees on primary and secondary channels (day of year, DOY 224 and 286 for cottonwood) are denoted by '\*'.

(*E*) from a cottonwood tree fitted with both sensor types (Fig. 7). Estimates using the two methods are positively correlated ( $r^2 = 0.94$ ,  $p < 0.0001$ ) and follow the 1:1 line.

Relationships between sapwood area ( $m^2$ ) and tree basal diameter (m) for cottonwood and willow are shown in Fig. 8. Diameter of cottonwood trees bored for sapwood area estimates ranged from 16 to 100 cm and sapwood area ranged from 100 to 2100  $cm^2$ .

Diameter of willow ranged from 7 to 37 cm, and sapwood area ranged from 25 to 600  $cm^2$ . The curve for both cottonwood ( $r^2 = 0.95$ ) and willow ( $r^2 = 0.88$ ) followed a power ( $y = m^*x^b$ ) relationship that has been observed in other tree species (Vertessy et al., 1995).

Mean daily transpiration at the canopy scale for all patches in July was  $4.8 \pm 0.7$  mm per day and ranged from  $5.7 \pm 0.6$  mm per day in young forest

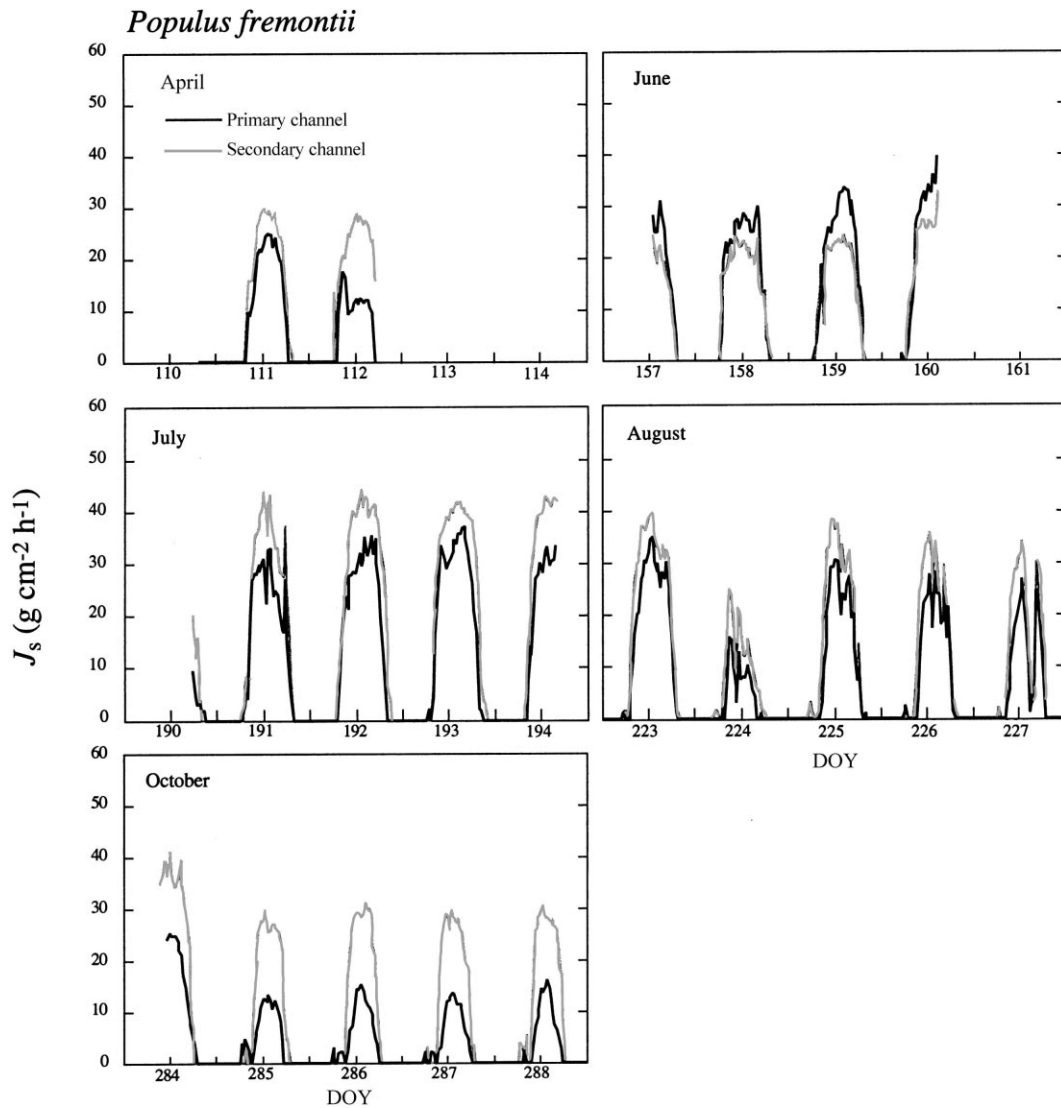


Fig. 4. Mean sap flux on a sapwood area basis ( $J_s$ ,  $\text{g cm}^{-2} \text{h}^{-1}$ ) for cottonwood trees (*P. fremontii*) located on primary and secondary channels at the Lewis Springs study site on the San Pedro River in southeastern Arizona. Measurements were taken for a total of 21 days during five key periods during the growing season in 1997.

patches adjacent to the primary stream channel to  $3.1 \pm 0.6$  mm per day in successional advanced patches on secondary channels (Fig. 9). Diurnal and seasonal patterns of  $E$  for trees along primary and secondary channels followed the same patterns as those found for cottonwood and willow separately. Also, mean LAI ( $\text{m}^2$  leaf area  $\text{m}^{-2}$  ground area) was significantly ( $p < 0.0002$ ) higher in patches located on primary channels

than along secondary stream channels over the course of the growing season (Fig. 10).

#### 4. Discussion

Daily transpiration for the cottonwood/willow forest in 1997 along the San Pedro River at the location



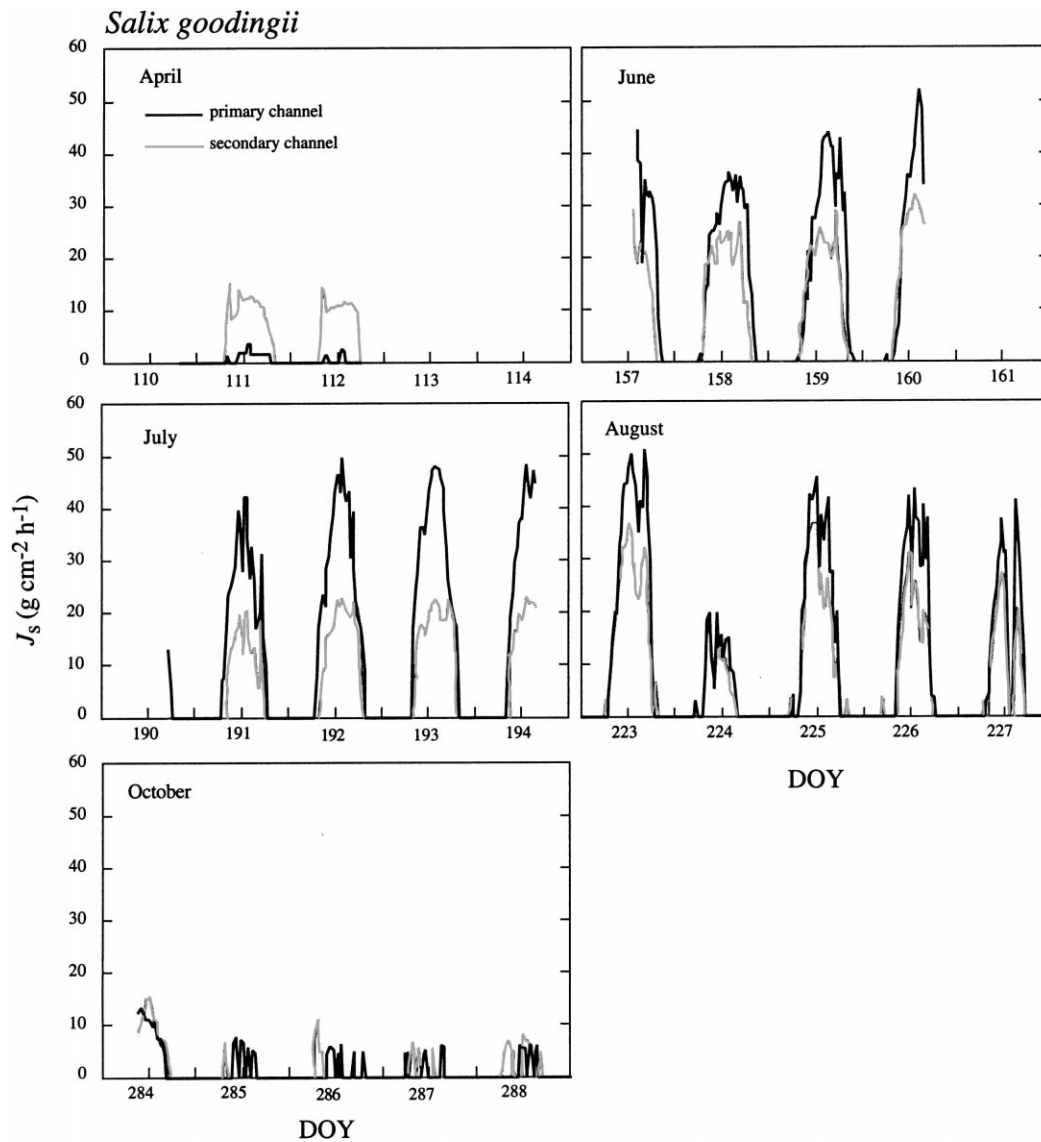


Fig. 5. Mean sap flux on a sapwood area basis ( $J_s$ ,  $\text{g cm}^{-2} \text{h}^{-1}$ ) for willow trees (*S. goodingii*) located on primary and secondary channels at the Lewis Springs study site on the San Pedro River in southeastern Arizona. Measurements were taken for a total of 21 days during five key periods during the growing season in 1997.

of the SALSA program measurement campaigns ranged from 1.2 to 4.8 mm per day. Transpiration rates appear to fall within the range of that found in broadleaf (David et al., 1997) and tropical-dry forests (Granier et al., 1996). These transpiration rates are low compared to that of salt cedar (*Tamarix ramosissima*) stands in similar environments. Salt cedar, a

non-native tree, has completely replaced native riparian forest in many areas in western North America (Brotherson and Field, 1987; Busch and Smith, 1995). Sala et al. (1996) and Devitt et al. (1998) reported maximum evapotranspiration rates in stands of salt cedar of 10–12 mm per day. Even though these estimates include evaporation from the soil surface, and

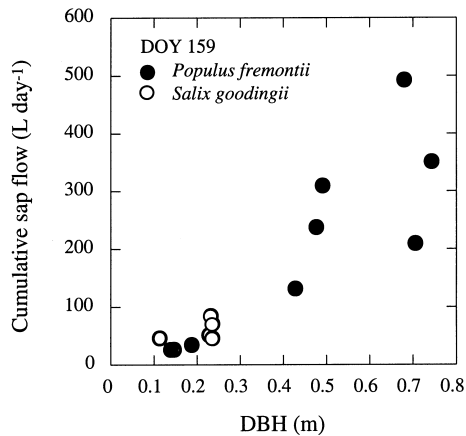


Fig. 6. Daily cumulative sap flow (l per day) of the nine cottonwood (*P. fremontii*) and six willow (*S. goodingii*) trees fitted with sap flow sensors at the Lewis Springs study site on DOY 159, 1997.

come from a different river system, these rates are more than twice the rate found in cottonwood/willow forest as reported here. This large difference in transpiration has important implications for regional water budgets in areas where salt cedar has the poten-

tial to replace, or already has replaced, native riparian species, and gives an indication of the potential effects of salt cedar removal and restoration of native forest.

What may be more significant than average transpiration rates from cottonwood/willow forests is the heterogeneity of transpiration at the patch scale. Cottonwood/willow forest dynamics in the southwest are strongly controlled by flood disturbance. *Salix* and *Populus* establish on exposed alluvial deposits along active channels (Stromberg, 1993, 1998), but further establishment within these intact forests is limited. As the forest patches develop and the stream changes course, stem densities decline and eventually patches become dominated by just a few large cottonwood and willow individuals. These patches often line the outer margins of the riparian flood plain on abandoned secondary channels (Asplund and Gooch, 1988). Forest dynamics at this scale have large ramifications for evapotranspiration.

Our data show that transpiration per unit ground area declines with successional development of cottonwood/willow forest at the Lewis Springs study site. During the peak of the growing season (June–August), transpiration in young forest patches near the primary

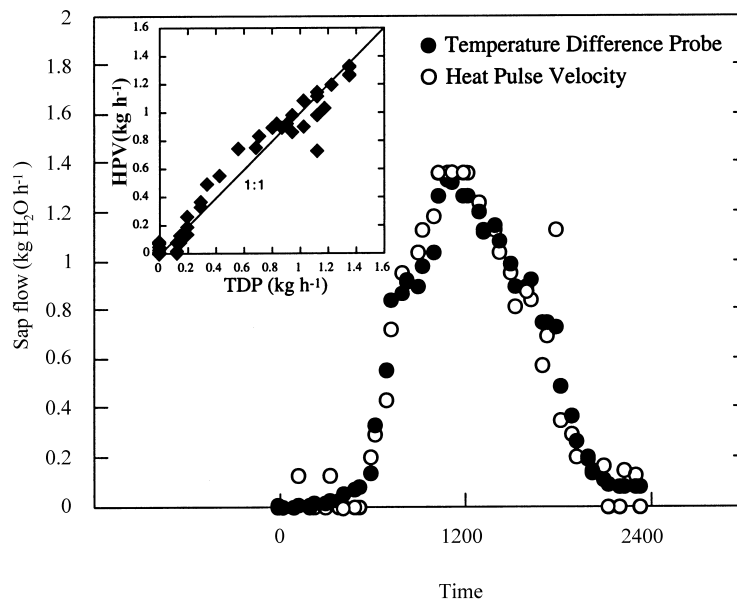


Fig. 7. Comparison of HPV and TDP estimates of transpiration. Measurements were conducted on one cottonwood tree over a 24-h period at the Lewis Springs site in June, 1998.

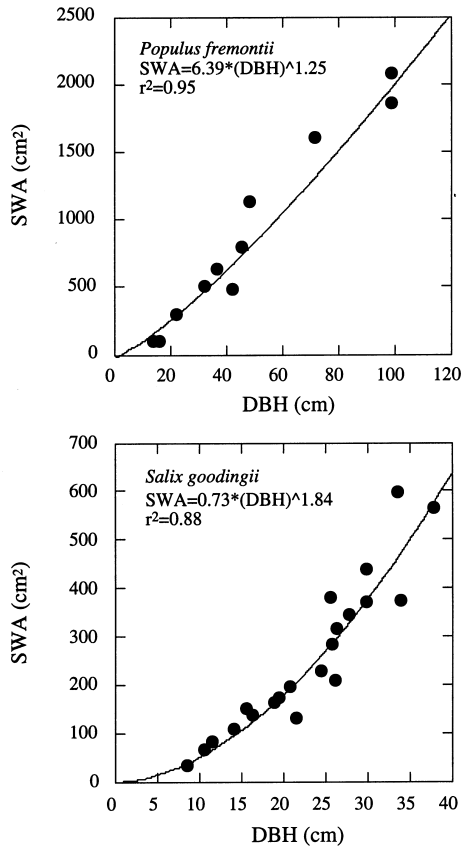


Fig. 8. Relationship between sapwood area (SWA, cm<sup>2</sup>) and tree diameter at 1.35 m (DBH) for cottonwood (*P. fremontii*) and willow (*S. goodingii*) at the Lewis Springs study site on the San Pedro River in southeastern Arizona. Regression analyses yielded a power relationship with  $r^2 = 0.95$  for cottonwood and  $r^2 = 0.88$  for willow.

stream channel was as much as twice that in older patches on outer secondary channels. Admittedly, our estimates of patch transpiration were based on a limited set of trees fitted with sap flux sensors. Cooper et al. (2000), however, using LIDAR found remarkable agreement with our estimates of the spatial variation in transpiration across the forest stand at the Lewis Springs study site.

Variations in transpiration between patches in this forest were a function of structural differences at that level. Structural differences include the ratio of sapwood area to canopy area (Table 1) and LAI (Fig. 10), as well as differences in the transpiration rate per unit sapwood area for cottonwood and willow

trees along primary and secondary channels related to tree diameter (Fig. 2). Declines in transpiration with successional development appear to be related to thinning within the stand and reductions in sapwood area and leaf area of the patch rather than reduced transpiration by individual trees. In fact, the larger cottonwood trees located along secondary channels appear to have higher transpiration on a sapwood area basis ( $J_s$ , Fig. 4) than cottonwood trees along primary stream channels. Water stress, estimated from predawn and midday water potentials, was not different for trees growing along primary and secondary stream channels at this site (Snyder and Williams, this issue), suggesting that differences in water status are not responsible for the differences in  $J_s$ .

Structural differences between younger and older portions of the forest, and the location of these patches relative to the surrounding arid lands can affect tree transpiration. Sala et al. (1996) likewise demonstrated that structural rather than physiological characteristics accounted for differences in stand-level transpiration between salt cedar and native riparian forest. Our results, furthermore, are an example of how population dynamics may determine ecosystem fluxes in these plant communities (Williams et al., 1999). In this case, mortality and lack of regeneration within established forest patches translates into considerable spatial variation in transpiration.

A proportion of seasonal- and patch-level variation in transpiration in this study was related to phenological differences between cottonwood and willow and to changes in species composition with patch succession. There was greater variation for transpiration on a sapwood area basis among individuals of willow than among individuals of cottonwood. As a subdominant species, willow may be exposed to a relatively heterogeneous light environment and over the course of a day, is exposed to differing light levels (Kelliher et al., 1992; Breda et al., 1995; Granier et al., 1996). Consequently, aggregation of transpiration using the sap flow technique may be more difficult for stands or forest patches with high densities of willow.

In this desert riparian forest, however, transpiration from cottonwood contributes proportionally more of the total water flux from the stand than does willow. Cottonwood contributed at least 51%, and on average 85%, of the total sapwood area to individual patches in this study. Furthermore, in contrast to

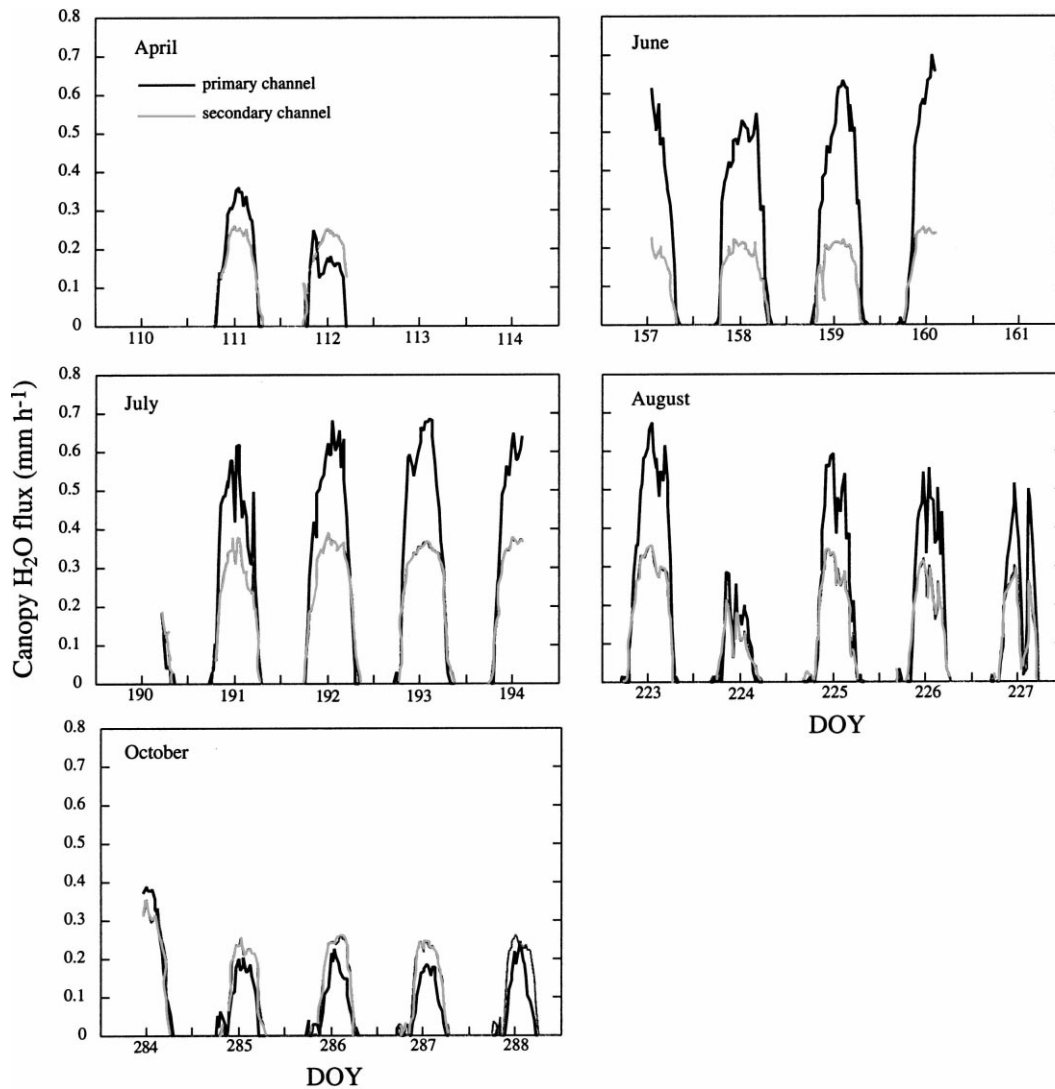


Fig. 9. Mean transpiration on a canopy area basis ( $E$ ,  $\text{mm h}^{-1}$ ) for patches of riparian vegetation located on primary and secondary channels at the Lewis Springs study site on the San Pedro River in southeastern Arizona. Measurements were taken for a total of 21 days during five key periods during the growing season in 1997.

cottonwood, transpiration from willow was negligible in early spring (April) and fall (October). These seasonal differences may be related to differences in leaf phenology and the relative sensitivity of the two species to frost. In April, leaves of willow had only recently begun to expand, and thus transpiration was very low. Cottonwood, however, possessed many fully expanded leaves in April and trees transpired at fairly

high rates. The highest transpiration rates occurred when temperature and vapor pressure deficit ( $D$ ) was highest, in this case June and July (data not shown). Transpiration was slightly lower in August perhaps because of the lower radiation input on cloudy days and the generally more humid atmosphere. Toward the end of the growing season, the decrease in transpiration from day 284 to 285 may have been a direct

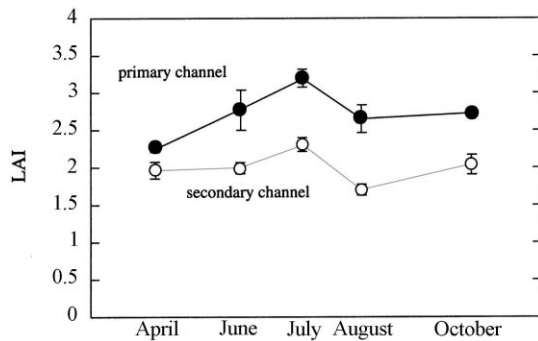


Fig. 10. Mean leaf area index (LAI, leaf area  $m^2$  ground area  $m^{-2}$ ) for patches of riparian vegetation located on primary and secondary stream channels at the Lewis Springs site in 1997. Error bars represent the standard error of the mean (S.E.).

response to nighttime frost, which appears to have reduced transpiration from both willow and cottonwood.

## References

- Asplund, K.K., Gooch, M.T., 1988. Geomorphology and the distributional ecology of Fremont cottonwood (*Populus fremontii*) in a desert riparian canyon. *Desert Plants* 9, 17–27.
- Barret, D.J., Hatton, T.J., Ash, J.E., Ball, M.C., 1995. Evaluation of the heat pulse velocity technique for measurement of sap flow in rainforest and eucalypt forest species of southeastern Australia. *Plant Cell Environ.* 18, 463–469.
- Bradley, C.E., Smith, D.G., 1985. Plains cottonwood recruitment and survival on a prairie meandering river floodplain, Milk River, southern Alberta and northern Montana. *Can. J. Bot.* 64, 1434–1442.
- Breda, N., Granier, A., Aussenac, G., 1995. Effects of thinning on soil and tree water relations, transpiration and growth in an oak forest (*Quercus petraea* (Matt.) Liebl.). *Tree Physiol.* 15, 295–306.
- Brotherson, J.D., Field, D., 1987. Tamarix: impacts of a successful weed. *Rangelands* 9, 110–112.
- Busch, D.E., Smith, S.D., 1995. Mechanisms associated with decline of woody species in riparian ecosystems of the southwestern US. *Ecol. Monographs* 65, 347–370.
- Busch, D.E., Ingraham, N.L., Smith, S.D., 1992. Water uptake in woody riparian phreatophytes of the southwestern United States: a stable isotope study. *Ecol. Appl.* 2, 450–459.
- Campbell, G.S., Calissendorf, C., Williams, J.H., 1991. Probe for measuring soil specific heat using heat-pulse method. *Soil Sci. Soc. Am. J.* 55, 291–293.
- Cohen, Y., Fuchs, F., Green, D.C., 1981. Improvement of the heat pulse method for determining sap flow in trees. *Plant Cell Environ.* 4, 391–397.
- Cooper, D.I., Eichinger, W.E., Kao, J., Hipps, L., Reisner, J., Smith, S., Schaeffer, S.M., Williams, D.G., 2000. Spatial and temporal properties of water vapor and latent energy flux over a riparian canopy. *Agric. For. Meteorol.* 105, 161–183.
- David, T.S., Ferreira, M.I., David, J.S., Pereira, J.S., 1997. Transpiration from a mature *Eucalyptus globulus* plantation in Portugal during a spring–summer period of progressively higher water deficit. *Oecologia* 110, 153–159.
- Devitt, D.A., Sala, A., Smith, S.D., Cleverly, J., Shaulis, L.K., Hammett, R., 1998. Bowen ration estimates of evapotranspiration for *Tamarix ramosissima* on the Virgin River in southern Nevada. *Water Resour. Res.* 34, 2407–2414.
- Granier, A., 1985. Une nouvelle methode pour la mesure du flux de sève brute dans le tronc des arbres. *Ann. Sci. For.* 42, 81–88.
- Granier, A., 1987. Evaluation of transpiration in a Douglas fir stand by means of sap flow measurements. *Tree Physiol.* 3, 309–320.
- Granier, A., Huc, R., Barigah, S.T., 1996. Transpiration of natural rain forest and its dependence on climatic factors. *Agric. For. Meteorol.* 78, 19–29.
- Hatton, T.J., Moore, S.J., Reece, P.H., 1995. Estimating stand transpiration in a *Eucalyptus populnea* woodland with the heat pulse method: measurement errors and sampling strategies. *Tree Physiol.* 15, 219–227.
- Hipps, L.E., Cooper, D., Eichinger, W., Williams, D., Schaeffer, S.M., Snyder, K., Scott, R., Chebouni, A., Watts, C., Hartogensis, O., Lhomme, J.P., Monteny, B., Brunel, J.-P., Boulet, G., Schieldge, J., DeBruin, H., Shuttleworth, J., Kerr, Y., 1997. A summary of processes which are connected to evaporation of riparian and heterogeneous upland vegetation in arid regions. In: Wood, E.F., Chebouni, A.G., Goodrich, D.C., Seo, D.J., Zimmerman, J.R. (Tech. Coords.), Proceedings from the Special Symposium on Hydrology. American Meteorological Society, Boston, MA, 1997, pp. 43–48.
- Johnson, W.C., 1994. Woodland expansion in the Platte River, Nebraska: patterns and causes. *Ecol. Monographs* 64, 45–84.
- Kelliher, F.M., Kostner, B.M.M., Hollinger, D.Y., Byers, J.N., Hunt, J.E., McSeveny, T.M., Meserth, R., Weir, P.L., Schulze, E.-D., 1992. Evaporation, xylem sap flow, and tree transpiration in a New Zealand broad-leaved forest. *Agric. For. Meteorol.* 62, 53–73.
- Kozłowski, T.T., Kramer, P.J., Pallardy, S.G., 1991. The Physiological Ecology of Woody Plants. Academic Press, San Diego, CA.
- Loustau, D., Berbigier, P., Roumagnac, P., Arruda-Pacheco, C., David, J.S., Ferreira, M.J., Pereira, J.S., Tavares, R., 1996. Transpiration of a 64-year-old maritime pine stand in Portugal. I. Seasonal course of water flux through maritime pine. *Oecologia* 107, 33–42.
- Olbrich, B.W., 1991. The verification of the heat pulse technique for estimating sap flow in *Eucalyptus grandis*. *Can. J. For. Resour.* 21, 836–841.
- Reichenbacher, F.W., 1984. Ecology and evolution of southwestern riparian plant communities. *Desert Plants* 6, 15–22.
- Sala, A., Smith, S.D., Devitt, D.A., 1996. Water use by *Tamarix ramosissima* and associated phreatophytes in a Mojave Desert floodplain. *Ecol. Appl.* 6, 888–898.
- Saugier, B., Granier, A., Pontailier, J.Y., Dufrene, E., Baldocchi, D.D., 1997. Transpiration of a boreal pine forest measured by branch bag, sap flow, and micrometeorological methods. *Tree Physiol.* 17, 511–519.

- Smith, R.E., 1991. The heat pulse velocity technique for determining water uptake of *Populus deltoides*. S. Afr. J. Bot. 58, 100–104.
- Smith, S.D., Wellington, A.B., Nachlinger, J.L., Fox, C.A., 1991. Functional response of riparian vegetation to streamflow diversion in the eastern Sierra Nevada. Ecol. Appl. 1, 89–97.
- Stromberg, J.C., 1993. Fremont cottonwood–growing willow riparian forests: a review of their ecology, threats, and recovery potential. J. Arizona–Nevada Acad. Sci. 26, 97–110.
- Stromberg, J., 1998. Dynamics of Fremont cottonwood (*Populus fremontii*) and saltcedar (*Tamarix chinensis*) populations along the San Pedro River, Arizona. J. Arid Environ. 40, 133–155.
- Swanson, R.H., Whitfield, D.W.A., 1981. A numerical analysis of heat pulse velocity theory and practice. J. Exp. Bot. 32, 221–239.
- Vertessy, R.A., Benyon, R.G., O’Sullivan, S.K., Gribben, P.R., 1995. Relationships between stem diameter, sapwood area, leaf area, and transpiration in a young mountain ash forest. Tree Physiol. 15, 559–567.
- Williams, D.G., McPherson, G.R., Weltzin, J.F., 1999. Stress in wildland plants: implications for ecosystems structure and function. In: Pessaralki, M. (Ed.), Handbook of Plant and Crop Stress, 2nd Edition. Marcel Dekker, New York.