



**US Army Corps  
of Engineers®**

Engineer Research and  
Development Center

## Bridge Inspection

### Description

The Engineer Research and Development Center's (ERDC) Bridge Inspection Team uses a mix of in-house personnel, Corps of Engineers' District personnel, and civilian consultants to help U.S. Army Directorates of Public Works maintain compliance with regulations regarding bridge safety.

Federal agencies are required by Public Law 95-599 to inspect bridges on all public roads under their jurisdiction and to annually report the data to the Federal Highway Administration's (FHWA) National Bridge Inventory. Army policy is that all vehicle bridges on Army property are considered open to the public and subject to the requirements of public law.

The ERDC Bridge Inspection Team assists the Army's Installation Management Agency and individual Army garrisons in complying with Army policy, as stated in Army Regulation 420-72.

### Capabilities

The ERDC Bridge Inspection Team has the capabilities to perform routine bridge inspections, underwater bridge inspections, fracture-critical bridge inspections, special in-depth bridge inspections, and damaged bridge inspections. ERDC can also perform bridge scour evaluations, load ratings, and load tests.

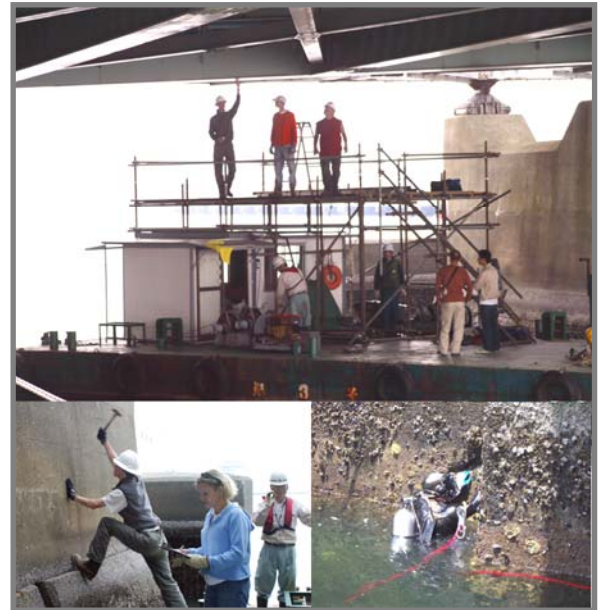
After completing a bridge inspection, the Team provides the Army garrison with all records required by Public Law 95-599.

### Benefits

The Army garrison benefits from the regular and appropriately scheduled inspections, and receives a final report showing compliance with Federal law. In addition, the Army garrison is assured that all required data are reported to the FHWA and archived at ERDC.

### ERDC POC(s)

**Terry R. Stanton**, 601-634-3408  
ERDC Geotechnical and Structures Laboratory, Vicksburg, MS 39180-6199



This series of pictures shows the ERDC team, along with consultants, conducting the underwater and fracture-critical inspection of a vehicle and rail-road bridge at Yokohama, North Dock, Japan