



FEMA




Database Exporter Tool User Guide

FEMA DFIRM Production Tools

```
DFIRM_Data_Export_Log - Notepad
File Edit Format Help
Database Exporter Log Results
DFIRM_ID:      06097C      JTX Job: DFIRM.JTX_38248
Exported By:   fematest601      Export Method:DRAFT EXPORT
Date Exported: 4/18/2005      Time Exported: 2:35:48 PM
-----
Layers/Tables successfully Exported:
DFIRM.S_BFE
DFIRM.S_FLD_HAZ_AR
DFIRM.S_FLD_HAZ_LN
DFIRM.S_GEN_STRUCT
DFIRM.S_PERM_BMK
DFIRM.S_PLSS_LN
DFIRM.S_POL_AR
DFIRM.S_POL_LN
DFIRM.S_WTR_LN
DFIRM.S_XS
DFIRM.STUDY_INFO
DFIRM.L_COMM_INFO
DFIRM.L_STN_START

Layers/Tables Not Exported due to zero records:
DFIRM.S_BASE_INDEX
DFIRM.S_CBRS
DFIRM.S_CST_GAGE
DFIRM.S_CST_TSCT_LN
DFIRM.S_FIRM_PAN
DFIRM.S_LOMR
DFIRM.S_NODES
DFIRM.S_OVRBNKLN
DFIRM.S_PFD_LN
DFIRM.S_PLSS_AR
DFIRM.S_QUAD_INDEX
DFIRM.S_PRECIP_GAGE
DFIRM.S_PROFIL_BASLN
DFIRM.S_RIV_MRK
```

Table of Contents:

What is the Database Exporter?	3
Database Exporter Overview	3
Quick Reference Guide	3
Tool Controls	4
 Submit Draft Data	4
 Submit Preliminary Data	5
 Submit Final Data	5
Trouble-Shooting	6
Contacts	7

What is the Database Exporter?

The Database Exporter allows users to export the populated data layers and tables from the ESRI SDE Geodatabase format into the three formats Mapping Partners are required to digitally submit to FEMA's Map Service Center (ESRI shapefile, ESRI Arc/Info interchange file, and MapInfo interchange format). These formats are dictated by FEMA's *Guidelines and Specifications for Flood Hazard Mapping Partners, Appendix L: Guidance for Preparing Draft Digital Data and DFIRM Database*. The exported data layers, tables, and log files generated by the Database Exporter are saved to the appropriate folder on the Submittal Directory (K drive).



Database Exporter toolbar

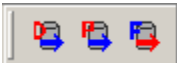
Database Exporter Overview

The Database Exporter user guide contains useful information that will help guide you through using the tool. The key sections of this guide are:

- Quick user reference guide (p. 3)
- Descriptions of tools and how to use them (p. 4)
- Support/contact information (p. 7)

Quick Reference Guide

The following is a quick reference guide to all of the components of the **Database Exporter Toolbar**.



[Submit Draft Data](#)

Export draft DFIRM data to required formats



[Submit Preliminary Data](#)

Export preliminary DFIRM data to required formats



[Submit Final Data](#)

Export final DFIRM data to required formats

Tool Controls

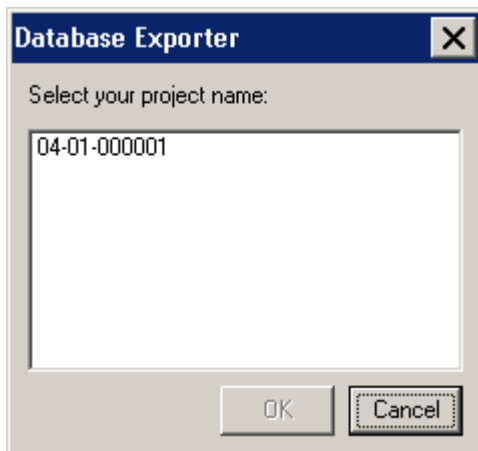
The DFIRM geodatabase must be submitted to FEMA in three digital data formats: ESRI shapefile (.shp); ESRI Arc/Info interchange file (.e00); and MapInfo interchange format (.mif). These formats are exported and stored when the DFIRM database is being developed (Draft Data); when the study is Preliminary (Preliminary Data); and when the study is Post-Preliminary (Final Data).



Submit Draft Data

Use this tool to export the draft version of the project data to the three required formats. The exported data files and the export log file are stored in the Submittal Directory (K drive), in the project's Draft_DFIRM_DB folder.

1. Click on the **Submit Draft Data** button.
2. Select the project name in the dialog box and click **OK**.

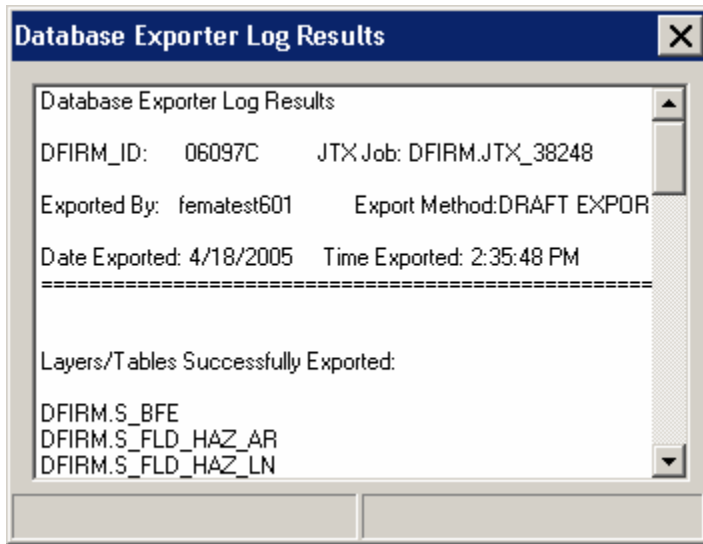


Project Selection dialog

NOTE: The data must be exported to all formats once the process is initiated, and the process cannot be canceled. The export may require a considerable amount of time, depending upon how much data exists for the project. Make sure that you are ready to start exporting before selecting your project number.

3. A series of process dialogs appear, displaying the progress for each of the following steps in the database export routine:
 - a. Exporting feature classes to shapefiles
 - b. Exporting Info tables to dBase tables
 - c. Exporting shapefiles to coverages
 - d. Exporting coverage to interchange file
4. Once the data has been exported to all of the file formats, a window with the exporting results log will appear. The log file lists which layers/tables were successfully exported and which failed

to export because the layer or table was empty. This file is saved in the Draft_DFIRM_DB folder, with the exported data.



Database Exporter Results Log



Submit Preliminary Data

Use this tool to export the preliminary version of the project data to the three required formats. The exported data files and the export log file are stored in the Submittal Directory (K drive), in the project's Preliminary_DFIRM_DB folder.

The functionality of the [Submit Preliminary Data](#) button is exactly the same as the [Submit Draft Data](#) button. Refer to the steps and screen captures in the [Submit Draft Data](#) section of this user guide for the exporting procedure.



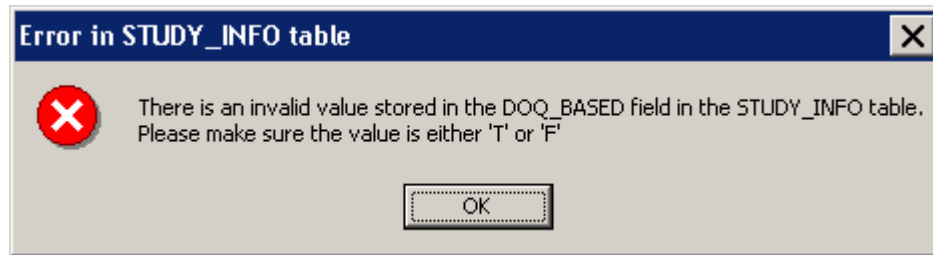
Submit Final Data

Use this tool to export the final version of the project data to the three required formats. The exported data files and the export log file are stored in the Submittal Directory (K drive), in the project's Final_DFIRM_DB folder.

The functionality of the [Submit Final Data](#) button is exactly the same as the [Submit Draft Data](#) button. Refer to the steps and screen captures in the [Submit Draft Data](#) section of this user guide for the exporting procedure.

Trouble-Shooting

Problem: This error message appeared when the database was exporting from the geodatabase to the dBase tables.



Error message – Not populated with a valid domain value.

Solution: When the tables are exported to dBase format, all of the domain codes are converted to domain values. In this case, the field was not populated with a valid domain code; thus, the tool is not able to translate it into a valid domain value. The exporting process will continue when you click OK. After the exporting process is complete, correct the error that the message refers to by selecting a valid value from the domain. Save your edits and repeat the database export.

Contacts

If you need assistance with this tool, please contact the representative at your local RMC.

REGIONAL - NSP MOD TEAM CONTACT LIST			
Name	Role	Email	Phone
REGION I			
Brent McCarthy	Lead	Brent.McCarthy@mapmodteam.com	336-240-7339
Jeffrey Burm	GIS/Mapping	jeffburm@mapmodteam.com	517-482-4930 x4752
REGION II			
Rich Cassin	Operations Manager	Rich.Cassin@mapmodteam.com	914-333-5366
Michael Crino	GIS/Mapping	mcrino@mbakercorp.com	718-482-9945
REGION III			
Mike Conaboy	Operations Manager	mconaboy@mbakercorp.com	609-734-7922
Lee Brancheau	GIS/Mapping	lbrancheau@mbakercorp.com	609-734-7912
REGION IV			
Stephen King	Operations Manager	Stephen.King@mapmodteam.com	678-459-1010
Kagan Kuyu	GIS/Mapping	Kagan.Kuyu@mapmodteam.com	678-459-1041
REGION V			
Sujata Banerjee	Business Manager	Sujata.Banerjee@mapmodteam.com	312-575-3902
Pam Coye	GIS/Mapping	Pam.Coye@mapmodteam.com	312-575-3913
REGION VI			
Dan Hoecker	Operations Manager	Dan.Hoecker@mapmodteam.com	940-783-4155
Phil Nguyen	GIS/Mapping	pxnguyen@mbakercorp.com	940-783-4121
REGION VII			
Matthew Koch	Operations Manager	mkoch@watershedconcepts.com	816-502-9420 x4952
Rod Odom	GIS/Mapping	rodom@watershedconcepts.com	816-502-9420 x4957
REGION VIII			
David Julia	Operations Manager	David.Julia@mapmodteam.com	720-514-1100
Mike Garner	GIS/Mapping	Mike.Garner@mapmodteam.com	720-514-1105
REGION IX			
Travis Clark	Business Manager	Travis.Clark@mapmodteam.com	510-879-0950
Michael Skowronek	GIS/Mapping	michael.skowronek@mapmodteam.com	510-879-0958
REGION X			
Michael Morgan	Business Manager	Mike.Morgan@mapmodteam.com	206-344-3891
Timothy Witten	GIS/Mapping	wittentd@bv.com	206-344-3891