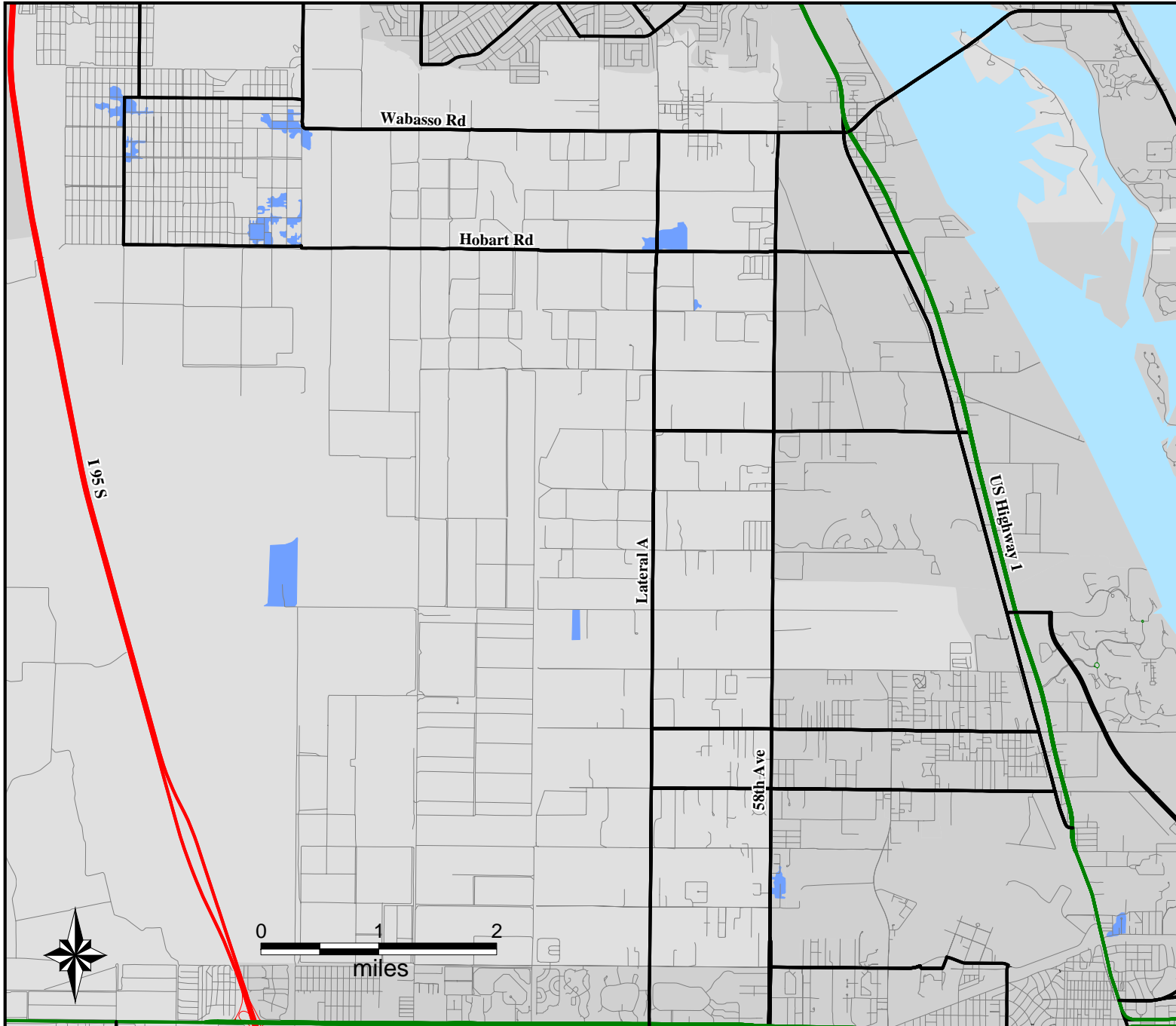
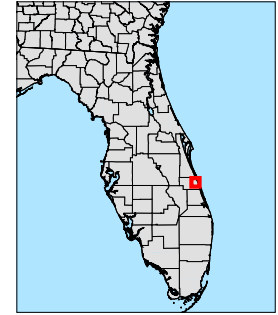


FEMA-1561-DR, Florida

Imagery Derived Assessment - Indian River, FL as of 9/28/2004



Location Map



Legend



Estimated Population in
Flooded Area: 82

Estimated Housing Units in
Flooded Area: 40



FEMA

ITS Mapping and Analysis Center
Washington, DC

9/29/2004 -- 04:18:31 EDT