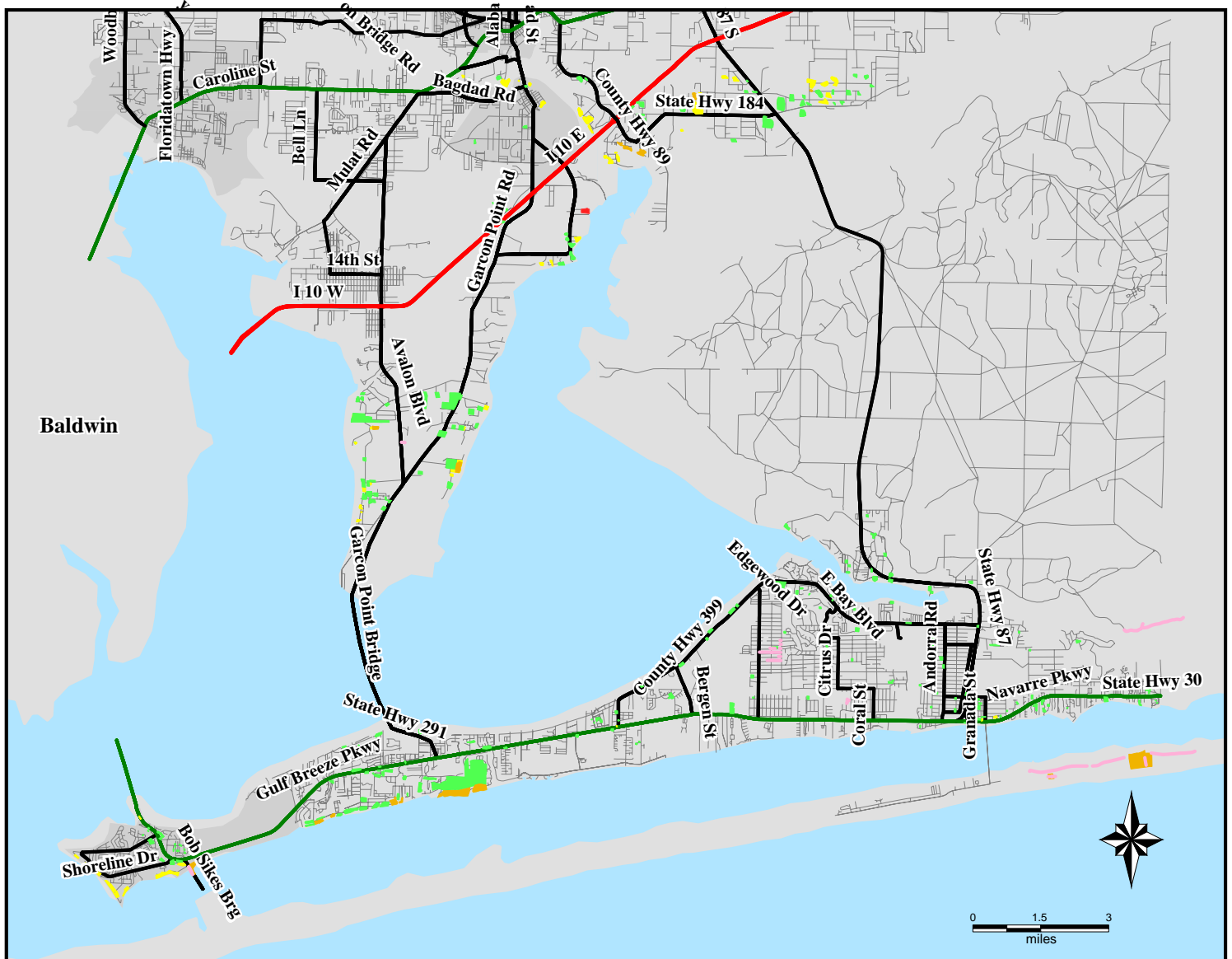


FEMA-1551-DR, Florida

Imagery Derived Assessment - Santa Rosa, FL as of 9/19/2004



Legend

- Limited Damage
- Moderate Damage
- Extensive Damage
- Catastrophic Damage
- Impassable Road

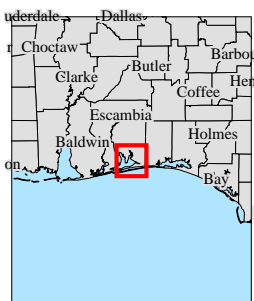
LIMITED DAMAGE: Generally superficial damage to solid structures (e.g., loss of tiles or roof shingles); some mobile homes and light structures are damaged or displaced.

MODERATE DAMAGE: Solid structures sustain exterior damage (e.g., missing roofs or roof segments); some mobile homes and light structures are destroyed, many are damaged or displaced.

EXTENSIVE DAMAGE: Some solid structures are destroyed; most sustain exterior and interior damage (e.g., roofs missing, interior walls exposed), most mobile homes and light structures are destroyed.

CATASTROPHIC DAMAGE: Most solid and all light or mobile structures destroyed.

Location Map



Estimated Number in Damage Area:

Population:	Housing Units:
LD: 928	LD: 418
MD: 148	MD: 66
ED: 184	ED: 82
CD: 2	CD: 1



ITS Mapping and Analysis Center
 Washington, DC
 9/20/2004 -- 02:45:55 EDT