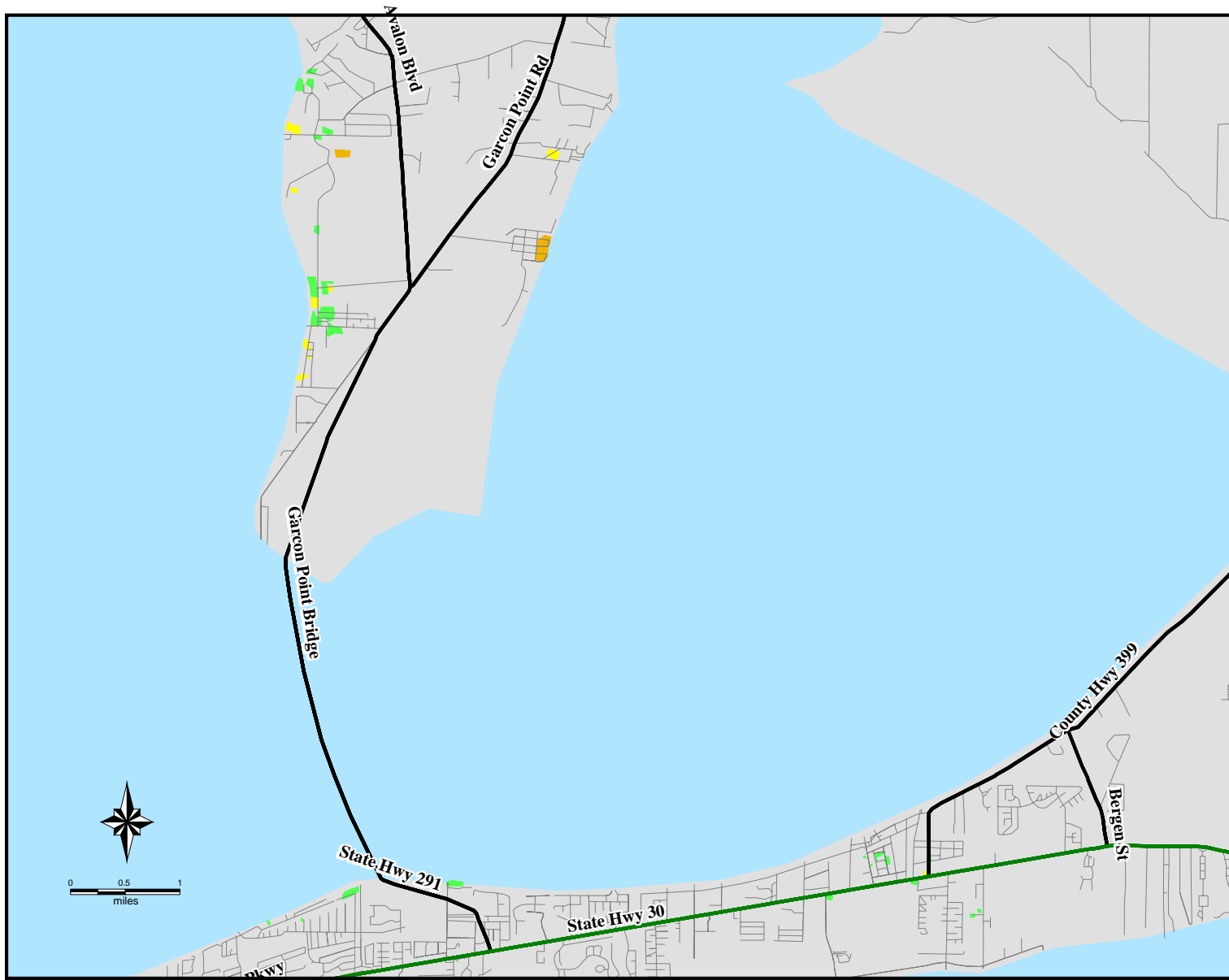
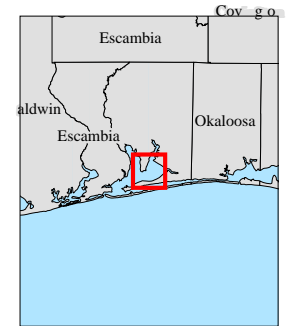


FEMA-1551-DR, Florida

Imagery Derived Assessment - Santa Rosa, FL as of 09/18/2004



Location Map



Legend

- Limited Damage
- Moderate Damage
- Extensive Damage

Estimated Number in Damage Area:

Population:	Housing Units:
LD: 53	LD: 23
MD: 6	MD: 3
ED: 10	ED: 4

LIMITED DAMAGE: Generally superficial damage to solid structures (e.g., loss of tiles or roof shingles); some mobile homes and light structures are damaged or displaced.

MODERATE DAMAGE: Solid structures sustain exterior damage (e.g., missing roofs or roof segments); some mobile homes and light structures are destroyed, many are damaged or displaced.

EXTENSIVE DAMAGE: Some solid structures are destroyed; most sustain exterior and interior damage (e.g., roofs missing, interior walls exposed), most mobile homes and light structures are destroyed.



ITS Mapping and Analysis Center
Washington, DC
09/18/2004 -- 03:41:41 EDT