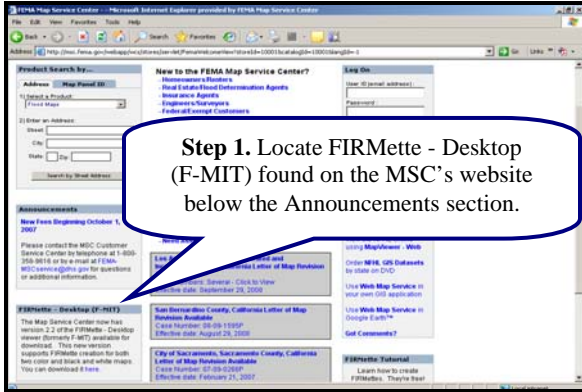


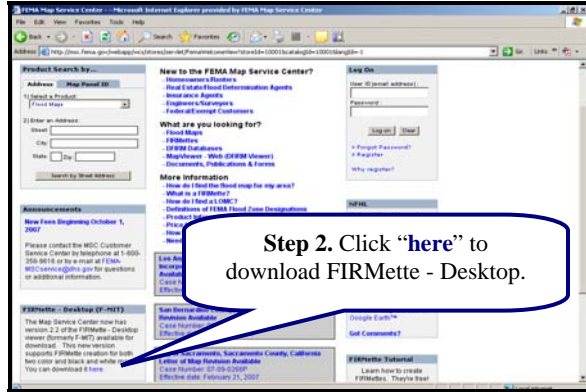


How to Install FIRMette - Desktop (F-MIT)

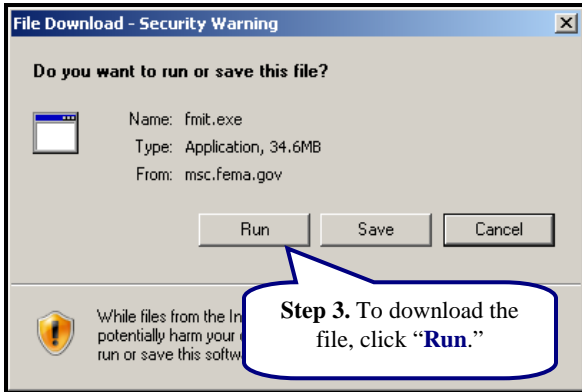
Below are step-by-step instructions for installing FIRMette - Desktop. Installation requires Microsoft .NET Framework 2.0 or higher. If this is not found on your PC, the setup program will install this software. During the installation you will have the opportunity to choose the location of FIRMette - Desktop on your PC. If you are installing FIRMette - Desktop from a CD, skip to Step 3.



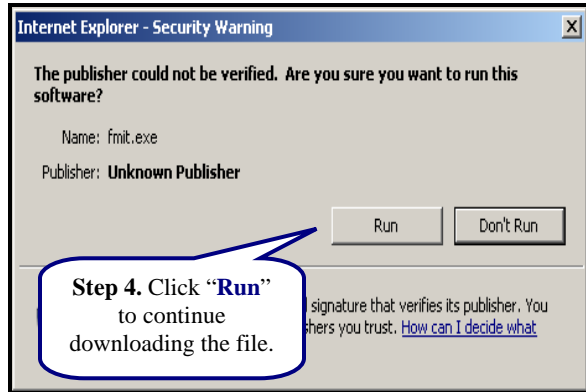
Step 1. Locate FIRMette - Desktop (F-MIT) found on the MSC's website below the Announcements section.



Step 2. Click "here" to download FIRMette - Desktop.



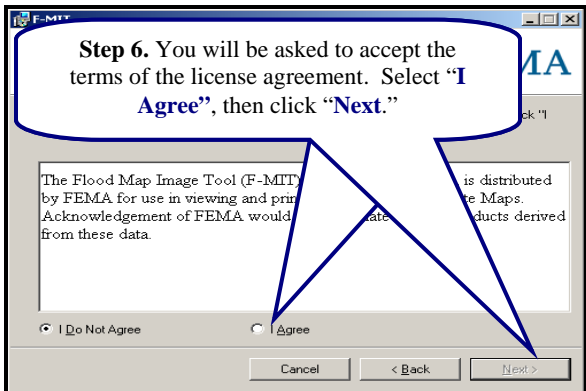
Step 3. To download the file, click "Run."



Step 4. Click "Run" to continue downloading the file.



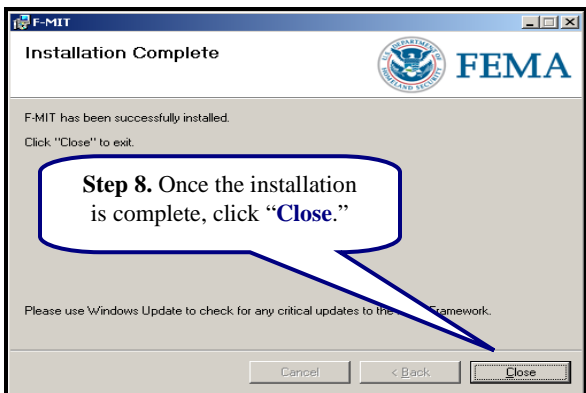
Step 5. The installer will guide you, click "Next."



Step 6. You will be asked to accept the terms of the license agreement. Select "I Agree", then click "Next."



Step 7. To complete the installation, click "Next."



Step 8. Once the installation is complete, click "Close."



How to Use FIRMette - Desktop (F-MIT)

FIRMette - Desktop, Version 2.2, allows users to create FIRMettes from FEMA issued Flood Insurance Rate Maps (FIRMs). A FIRMette is an official copy of a portion of a FIRM. This informational flyer covers the basic instructions for making a FIRMette from digital copies of FIRMs (.tif and .png) that you have saved to your computer. FIRMette - Desktop Version 2.2 supports FIRMette creation for both two-color and black and white maps.

