



# Winter Storm Preparedness







## Illinois Winter Weather Facts

- ❖ A total of **37 people have died from outdoor exposure** to cold temperatures in the state of Illinois since 1997. This is more than severe thunderstorms and tornadoes (25 deaths), floods (14) and lightning (12) during the same period.
- ❖ Illinois normally experiences five severe winter storms each year. However, during the winter of 2007-08 there were **16 severe winter storms**, five of which impacted one third or more of the state!
- ❖ As few as two (*in the winters of 1921-1922 and 1980-1981*), and as many as 18 (*in the winters of 1977-1978 and 1981-1982*) severe winter storms have occurred in Illinois.
- ❖ There has not been a winter in Illinois without a severe winter storm in the past century.
- ❖ Average annual snowfall ranges from nearly 39 inches of snow in Rockford and Chicago, to as little as 10 to 15 inches in the southern tip of Illinois.
- ❖ The greatest snowfall on record from a single storm occurred near the west central Illinois town of Astoria, where 37.8 inches was measured February 27-28, 1900.
- ❖ On average, locations from just south of Quincy, through Lincoln, to Watseka experience more freezing rain and ice storms than any other part of the state.
- ❖ The coldest temperature on record in the state occurred on January 5, 1999 when the mercury dipped to -36 °F near Congerville in Woodford County!



## WINTER WEATHER TERMS

The National Weather Service uses the terms below to convey the weather threat to the public.

### Watches, Warnings & Advisories

**Winter Weather Advisory** -- Indicates snow (2-4" in southern IL, 3-5" in northern or central IL) or a combination of winter weather conditions will cause significant inconveniences and may be hazardous, especially to motorists. **Use caution if you venture out!**

**Winter Storm Watch** -- Indicates severe winter weather, such as heavy snow or ice, is possible within the next day or two. **Prepare now!**

**Winter Storm Warning** -- Indicates heavy snow (4"+ in southern IL, 6" + northern or central IL), heavy sleet ( $\frac{1}{2}$ " +), or a combination of winter weather hazards are highly likely or occurring. **Stay indoors and adjust travel plans!**

**Blizzard Warning** -- Strong winds of 35 mph or greater will combine to produce blinding snow, near zero visibility, deep drifts, and life threatening conditions – especially for those that attempt travel.

**Freezing Rain Advisory** -- Light accumulations of ice will cause hazardous travel.

**Ice Storm Warning** -- Heavy accumulations of ice will create extremely dangerous travel, damage trees and likely cause extended power outages.

**Wind Chill Advisory** -- Dangerous wind chills of 15 to 24 below zero.

**Wind Chill Warning** -- Life threatening wind chills of 25 to 30 below zero or colder.

### Winter Weather Definitions

**Sleet** – Small pellets of ice, created by frozen raindrops. Sleet bounces when hitting a surface and does not stick to objects.

**Freezing Rain** – Precipitation that falls from the cloud as rain, but freezes into a glaze of ice on ground based objects (trees, power lines, roads, cars, etc...).

**Wind Chill** – A calculation of how cold it feels outside when the effects of temperature and wind speed are combined. Wind chill ONLY applies to bare, human skin. The effects of wind chill are different for animals, and doesn't apply at all to other objects.

## Affects of Winter Storms



Severe winter storms can cause widespread damage and disruption. Heavy snow often results in paralyzed transportation systems, automobile accidents due to slippery roads and stranded vehicles. Glazing from ice storms topples utility lines and poles and makes travel virtually impossible. These conditions can be a threat to life. Nearly 80 people in the United States die from winter storms and extreme cold every year. This number is larger than the fatalities due to tornadoes!

### **BEFORE A WINTER STORM OR EXTREME COLD**

- **Know the terms related to winter storms and extreme cold.**  
(See page 2)
- **County names are used to identify areas at risk, so it is important for you to know the names of the counties in which you live, work and travel frequently.**
- **Learn how to protect your family's health during the winter months:**
  - Dress appropriately for the winter. (See page 9)
  - Learn the physical dangers to your body. (See page 10)
- **Gather emergency supplies for work or home:**
  - Be prepared for at least three days, if not more.
  - A battery-powered NOAA Weather Radio and a battery-powered commercial radio and extra batteries.
  - Foods that do not require cooking or refrigeration are best. Include high energy foods such as dried fruit and candy.
  - Extra medications and special items for babies, the disabled or elderly.
  - Extra water in clean containers.
  - Rock salt to melt ice on walkways and sand to improve traction.
  - Flashlights and extra batteries. Do not use candles; they are a fire hazard.



- **Winterize your home to extend the life of your fuel supply:**

- Insulate walls and attics.
- Caulk and weatherize doors and windows.
- Install storm windows, or cover windows with plastic.



- **Take steps to prevent frozen water pipes:**

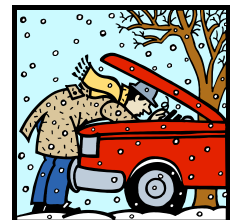
- Locate and insulate pipes most susceptible to freezing--typically those near outer walls, in crawl spaces, or in attics.
- Wrap pipes with heat tape (UL approved).
- Seal any leaks that allow cold air inside where pipes are located.
- Disconnect garden hoses and shut off and drain water from pipes leading to outside faucets.
- In case pipes burst, make sure you and your family know how to shut off the water.

- **Prepare for possible isolation in your home for several days:**

- Make sure you have sufficient heating fuel. After a severe winter storm, regular fuel carriers may not be able to reach you for days.
- Have emergency heating equipment (fireplaces, wood burning stoves or space heaters) and ample fuel so you can keep at least one room of your house warm enough to be livable. Always ensure proper ventilation.
- Keep fire extinguishers on hand, and make sure your family knows how to use them.

- **Prepare your vehicle for the winter:**

- Winterize your vehicle following the suggested maintenance schedule included in the owner's manual, or have your vehicle serviced by a reputable dealer, garage, or mechanic.
- Check your wipers, tires, lights, and fluid levels regularly. Make sure the brakes and transmission are working properly. Lubricate door and trunk locks to prevent them from freezing.
- Prepare a Winter Storm Survival Kit (See page 9) and carry it in your vehicle.



## **DURING A WINTER STORM AND EXTREME COLD**



### **When At Home**

- Stay indoors in a heated room as much as possible.
- Hang blankets over windows at night, but let the sun shine in during the day. Cover cracks around doors with rugs, newspapers, towels or other such material.
- When using alternative heat from a fireplace, wood stove, space heater, etc., use safeguards and ensure proper ventilation.
- Refuel kerosene heaters outside and keep them at least three feet away from flammable objects.
- If you have no heat, close off unneeded rooms and place towels or rags under the doors. Cover windows at night.
- Eat to supply heat to your body and drink non-alcoholic beverages to avoid dehydration.
- If your water pipes freeze:
  - Shut off water at the main source. This can minimize the damage to your home.
  - Call a plumber and contact your insurance agent.
  - Never try to thaw a frozen pipe with an open flame or torch.
  - Always be careful of the potential for electric shock in and around standing water.

### **Outside**

- Avoid overexertion, such as shoveling heavy snow, pushing a car or walking in deep snow. The strain from the cold and the hard labor could cause a heart attack at any age - a major cause of death in the winter.
- Watch for signs of frostbite and hypothermia. (See page 10 for details)
- If you become stranded:
  - Seek shelter to stay dry.
  - Cover all exposed parts of the body.
  - If no shelter is nearby, prepare a lean-to, windbreak or snow cave for protection from the wind. Build a fire for heat and to attract attention.  
Do not eat snow as it will lower your body temperature. Melt it first.



## On The Farm



- Move animals to sheltered areas.
- Haul extra feed to nearby feeding areas.
- Have a water supply available. Most animal deaths in winter storms occur from dehydration.

## When Traveling

If you decide a trip cannot be delayed, consider using public transportation. If you decide to drive your vehicle:

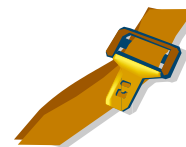


- **Before You Leave**

- **Plan your travel and check the latest weather conditions** along your travel route. Listen to weather forecasts on TV, local radio stations or NOAA Weather Radio. Call **1-800-452-IDOT** or go to the IDOT website ([www.gettingaroundillinois.com](http://www.gettingaroundillinois.com)) to get current road conditions for Illinois' interstate and freeway systems.
- **Check** your wipers, tires, lights and fluid level. Lubricate door and trunk locks with lock lubricant to prevent them from freezing. Start with a full tank of gas.
- **Travel during daylight hours** on main roads and don't travel alone.
- **Carry a Winter Storm Survival Kit in your vehicle.** (see Page 9)
- **Provide your itinerary to a friend, relative or co-workers.** Include information on where you are going, the routes you will travel and when you expect to arrive. When you reach your destination, make a call to report that you have arrived.

- **On The Road**

- **Buckle your seat belts!**
- **Be prepared to turn back** and seek shelter if conditions become threatening.
- Keep your **windows clear** of snow and ice. Do not start driving until your windshield is defrosted.
- **Drive slower** and increase your following distance. Your speed should be adjusted for the conditions and match the flow of traffic.





- Roadway conditions may vary depending on the sun, shade, or roadway surface. **Watch for slick spots** especially under bridges, on overpasses and in shaded spots.
- If the pavement is snow or ice covered, **start slowly and brake gently**. Begin braking early when you come to an intersection. If you start to slide, ease off the gas pedal or brakes. Steer into the direction of the skid until you feel you have regained traction then straighten your vehicle.
- When a snowplow is coming toward you, allow plenty of room for the truck to pass. When the center line is being cleared and salted, the plow tip may be on or over the line.
- **When you approach a snowplow from behind, pass with care** and only when you can see the road ahead of the truck. You should not try to pass in blowing snow; there may be a vehicle in that cloud of snow. Allow more distance between you and the plow, which may be spreading salt.
- **While traveling, refuel often** ---- keeping your gas tank near full to prevent ice in the tank and fuel lines, which could leave you stranded. These frequent stops also should help to relieve tense muscles.
- **If Stranded**



- **Pull as far off the road as possible**, set your hazard lights to "flashing," and hang or tie a colored cloth (preferably red) to your antenna, window or door. After the snow stops falling, raise the hood to indicate trouble. If you have a cellular phone, **call for help**.
- **Stay in your vehicle** where rescuers are most likely to find you. Do not set out on foot unless you can see a building close by where you know you can take shelter. Distances are distorted by blowing snow. A building may seem close, but actually be too far away to reach by walking in deep snow.
- **Make sure the exhaust pipe is not blocked by snow**, and then run the engine and heater about ten minutes each hour to keep warm. Turn on the dome light at night when running the engine. When the engine is running, open a window slightly for ventilation. The fresh air will protect you from carbon monoxide poisoning. Periodically clear away snow from the exhaust pipe.
- **Use items in your Winter Storm Survival Kit.** (See page 9)
- Exercise to keep blood circulating and to maintain body heat by **vigorously moving arms, legs, fingers, and toes**. In extreme cold or if you don't have a Winter Storm Survival Kit, use road maps, seat covers and floor mats for insulation.

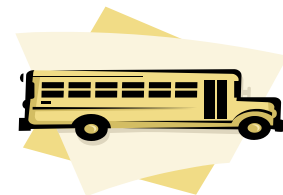
- **Take turns sleeping.** One person should be awake at all times to look out for rescue crews.
- Be careful not to use up battery power. Balance electrical energy needs -- the use of lights, heat and radio -- with supply.
- If stranded in a remote rural area or wilderness area, spread a large cloth over the snow to attract attention of rescue personnel who may be surveying the area by airplane. Once the blizzard passes, you may need to leave the vehicle and proceed on foot.

## **SAFETY FOR SCHOOLS**

Children can be especially susceptible to the dangers associated with winter weather. Even if they are cold, wet, or exhausted, they often are not conscious of the potential impact these conditions could pose. School administrators, principals, and teachers need to be aware of the dangers of winter weather. Emergency plans and procedures must be established or reviewed before the onset of the winter season to ensure children's safety. Winter safety procedures should include:



- A means of receiving current weather information. The National Weather Service (NWS) provides this information via NOAA Weather Radio. Commercial radio and television also air winter weather conditions.
- Guidelines for children's outdoor activities.
- Plans and procedures for closures, early dismissal or holding children and staff at school due to snow, ice or extreme cold.
- Provisions for children who arrive earlier than usual or stay later than usual due to driving conditions parents may encounter.
- Considerations for bus drivers:
  - Training for winter conditions.
  - Procedures for altered school schedules.
  - Changes in routes (alternate) during winter conditions.
  - Procedures to deal with stranded buses.



## WINTER STORM SURVIVAL KIT FOR TRAVELERS

- Cell phone and charger
- Blankets/sleeping bags
- Flashlight with extra batteries
- First-aid kit
- Knife
- High calorie, non-perishable food
- Extra clothing to keep dry
- A large empty can and plastic cover with tissues and paper towels for sanitary purposes
- A smaller can and water-proof matches to melt snow for drinking water
- Sack of sand (or cat litter)
- Shovel
- Windshield scraper and brush
- Tool kit
- Tow rope
- Booster cables
- Water container
- Compass and road maps



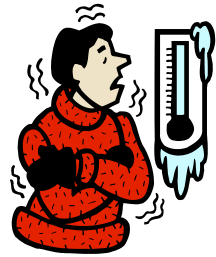
## RECOMMENDED WINTER ATTIRE

- Wear loose fitting, lightweight, warm clothing in several layers (the trapped air between the layers insulates). Layers can be removed to avoid perspiration and subsequent chill.
- Wear outer garments that are tightly woven, water repellent, and hooded.
- Wear a hat (half of body heat is lost through the top of the head).
- Wear mittens that are snug at the wrist. Mittens offer better protection. Gloves allow your fingers to cool much faster than mittens do.
- Cover the mouth and nose with scarves to help protect lungs from cold air.
- Attempt to keep your feet as dry as possible. Wear wool socks.



## FROSTBITE AND HYPOTHERMIA

**Frostbite** is a severe reaction to cold exposure of the skin that can permanently damage fingers, toes, the nose, and ear lobes. Symptoms are numbness and a white or pale appearance to the skin. When symptoms are apparent, seek medical help immediately. If medical help is not immediately available, slowly warm the affected areas.



**Hypothermia**, or low body temperature, is a possibly life threatening condition brought on when the body temperature drops to less than 95 degrees Fahrenheit.

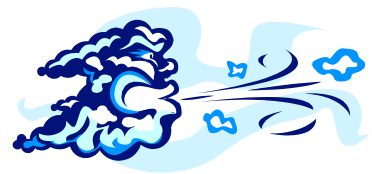
Symptoms include:

- Slow or slurred speech
- Incoherence
- Memory loss
- Disorientation
- Uncontrollable shivering
- Drowsiness
- Repeated stumbling
- Apparent exhaustion.

If these symptoms are detected, take the person's temperature. **If below 95 degrees F, immediately seek medical attention.** If medical help is not available, begin warming the person slowly. Always warm the body core first. Get the person into dry clothing, and wrap them in a warm blanket covering the head and neck. Do not give the victim alcohol, drugs, coffee, or any hot beverage. Warm broth is better. Do not warm extremities (arms and legs) first. This drives the cold blood toward the heart and can lead to heart failure.

## WIND CHILL

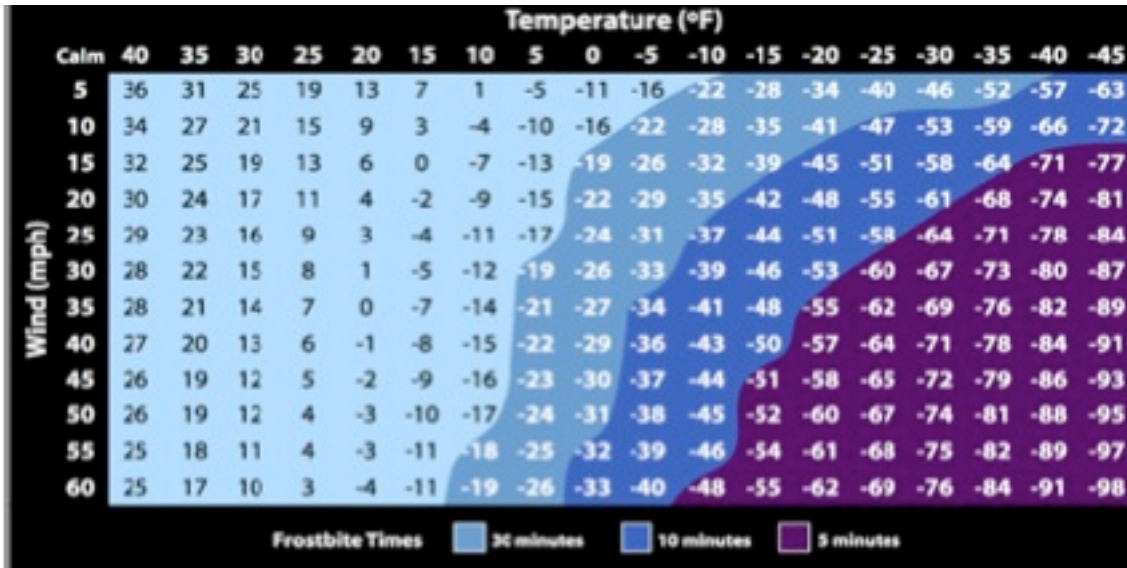
Most of the time, cold is judged in terms of a thermometer reading. With people and other living things though, both temperature and wind speed are needed to produce a “wind chill factor.” The wind chill is based on the rate of heat loss from exposed skin caused by the combined effects of the wind and cold. As the wind increases, heat is carried away from the body at an accelerated rate, driving down the body temperature. The wind chill shows how cold the wind makes exposed flesh feel and is a good way to determine the potential for frostbite or hypothermia.



Remember, wind chill values apply only to living beings. The wind chill factor does not apply to non-living objects. If the temperature is 35 °F. and the wind chill is 10 °F., objects such as pipes or cars will only cool to 35 °F.

# NATIONAL WEATHER SERVICE WIND CHILL CHART

Read right, and down from the calm-air line. For example, a temperature of 0 °F combined with a 20 mph wind, has an equivalent cooling effect of -22 °F.



## ADDITIONAL SOURCES OF INFORMATION

For additional information on winter storms or other hazards, contact the following:

- Your local Emergency Management Agency (EMA or ESDA)
- Illinois Emergency Management Agency Web page: [www.state.il.us/iema](http://www.state.il.us/iema)
- The website of the nearest National Weather Service (NWS) office:
  - Davenport, IA [www.weather.gov/Davenport](http://www.weather.gov/Davenport)
  - Romeoville, IL [www.weather.gov/Chicago](http://www.weather.gov/Chicago)
  - Lincoln, IL [www.weather.gov/Lincoln](http://www.weather.gov/Lincoln)
  - St. Louis, MO [www.weather.gov/StLouis](http://www.weather.gov/StLouis)
  - Paducah, KY [www.weather.gov/Paducah](http://www.weather.gov/Paducah)
- Your local chapter of the American Red Cross (ARC) or [www.redcross.org](http://www.redcross.org)
- Illinois Dept. of Transportation – Road Conditions [www.gettingaroundillinois.com](http://www.gettingaroundillinois.com)
- State of Illinois [www.ready.illinois.gov](http://www.ready.illinois.gov)



Printed by the Authority of the State of Illinois  
(IOCI 0439-09 – 500 – 10/08)  
Print Order # 599