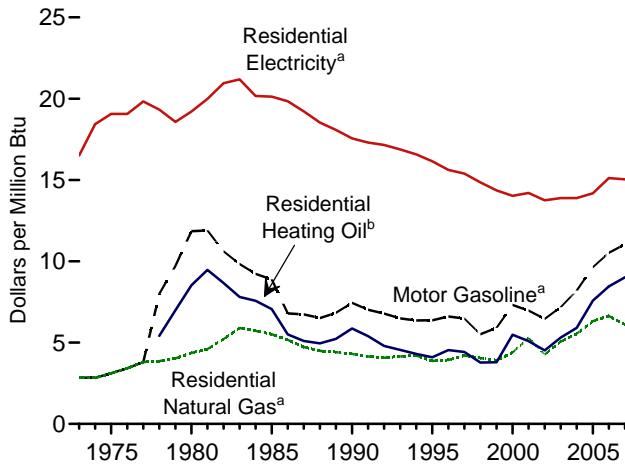
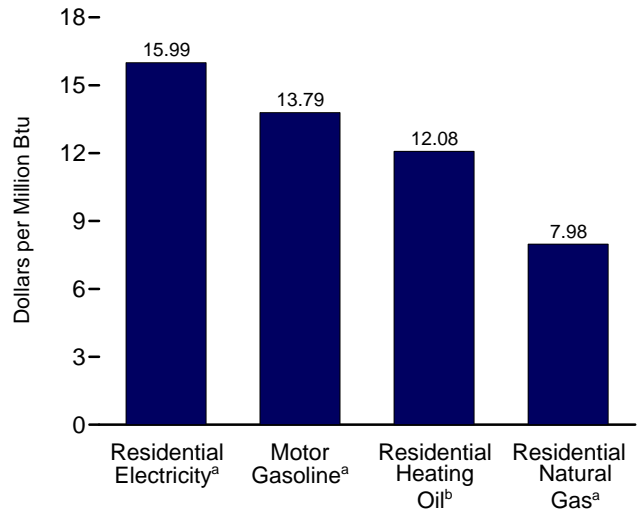


**Figure 1.6 Cost of Fuels to End Users in Real (1982-1984) Dollars**

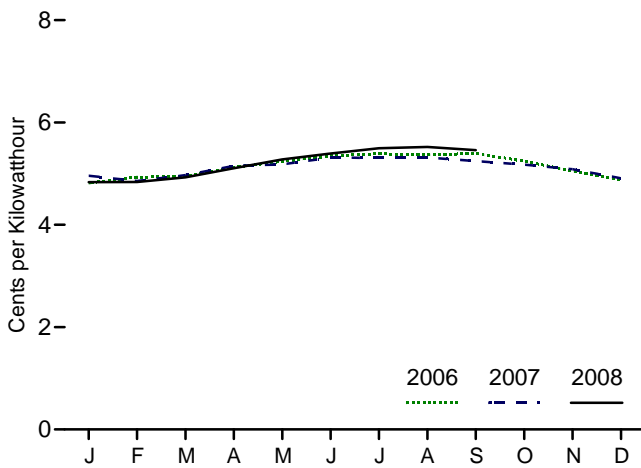
Costs, 1973-2007



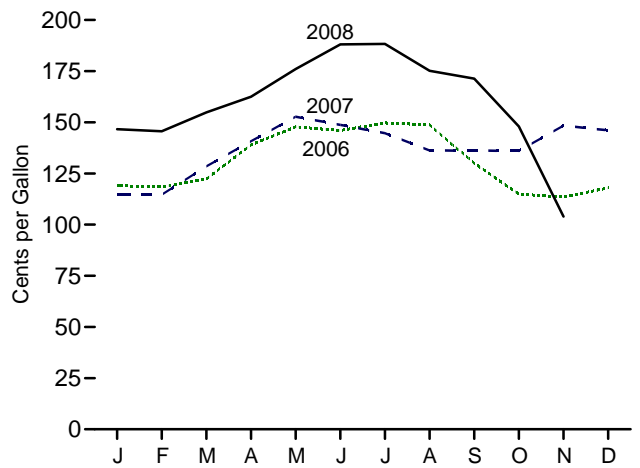
Costs, September 2008



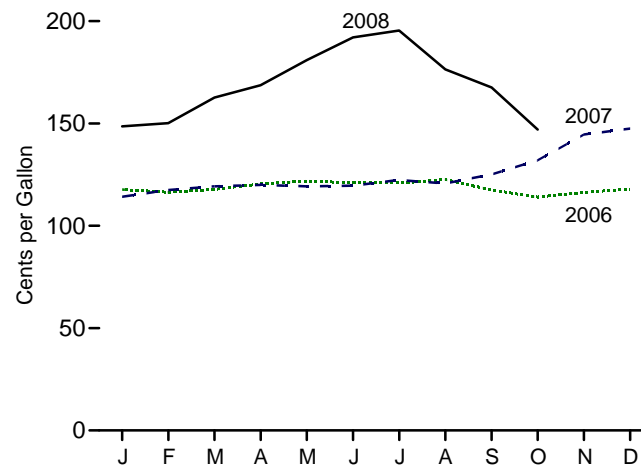
Residential Electricity<sup>a</sup>, Monthly



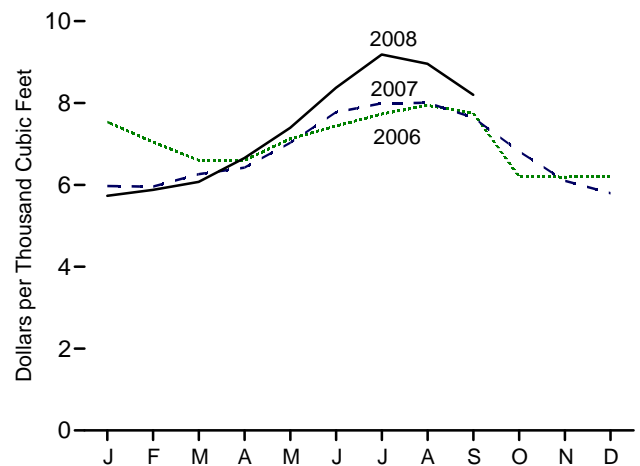
Motor Gasoline<sup>a</sup>, Monthly



Residential Heating Oil<sup>b</sup>, Monthly



Residential Natural Gas<sup>a</sup>, Monthly



<sup>a</sup>Includes taxes.  
<sup>b</sup>Excludes taxes.

Note: Because vertical scales differ, graphs should not be compared.  
Web Page: <http://www.eia.doe.gov/emeu/mer/overview.html>.  
Source: Table 1.6.