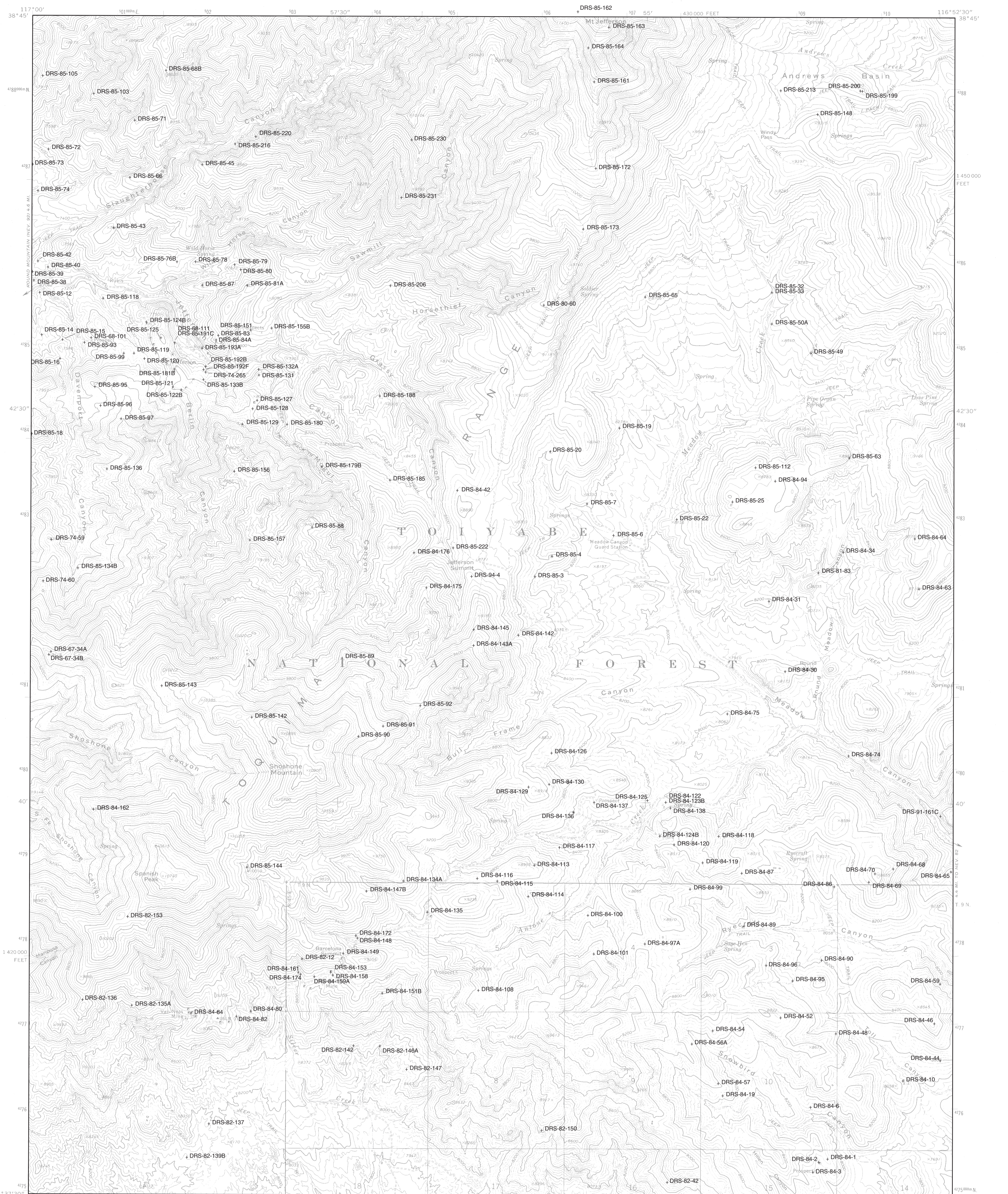
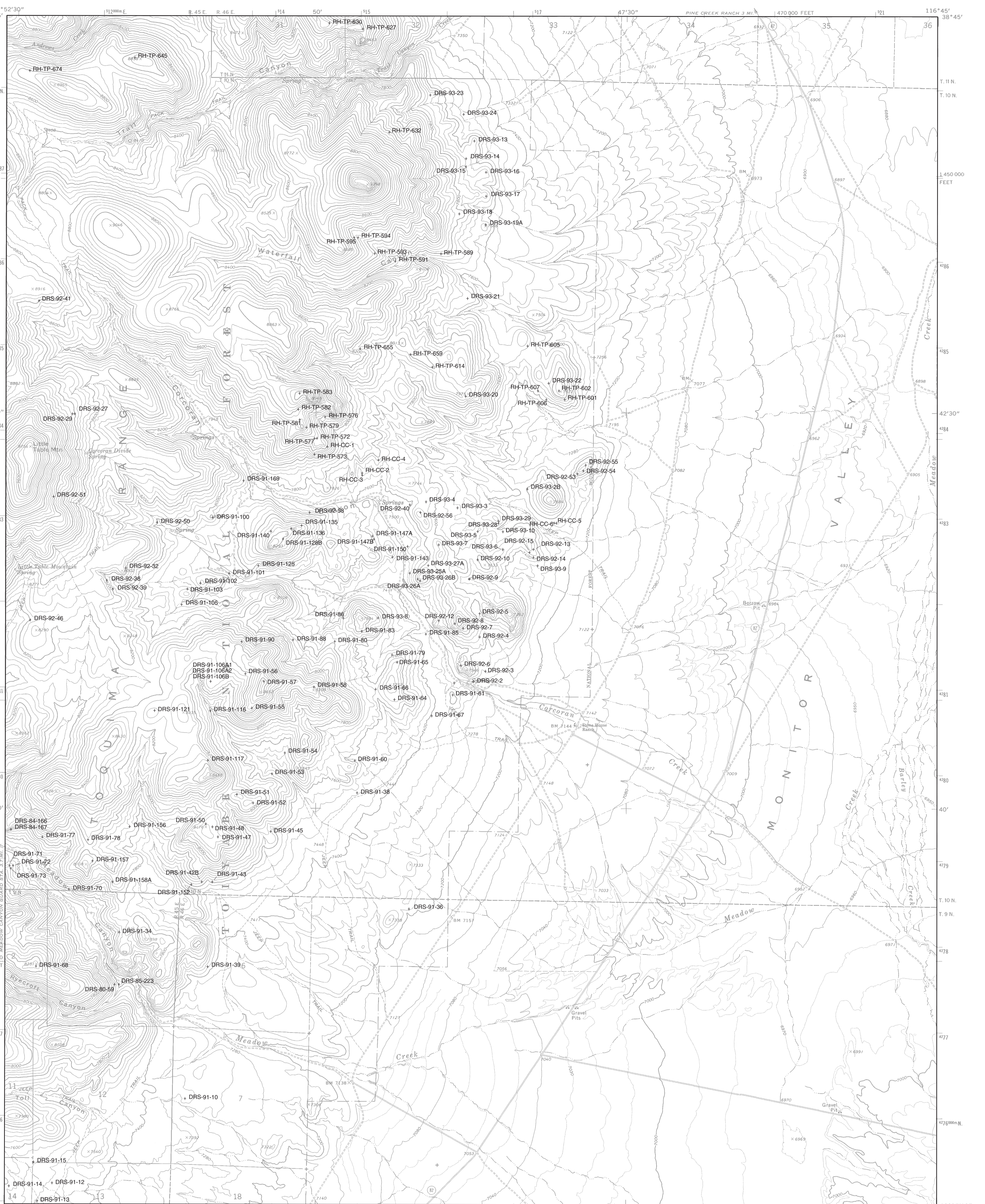


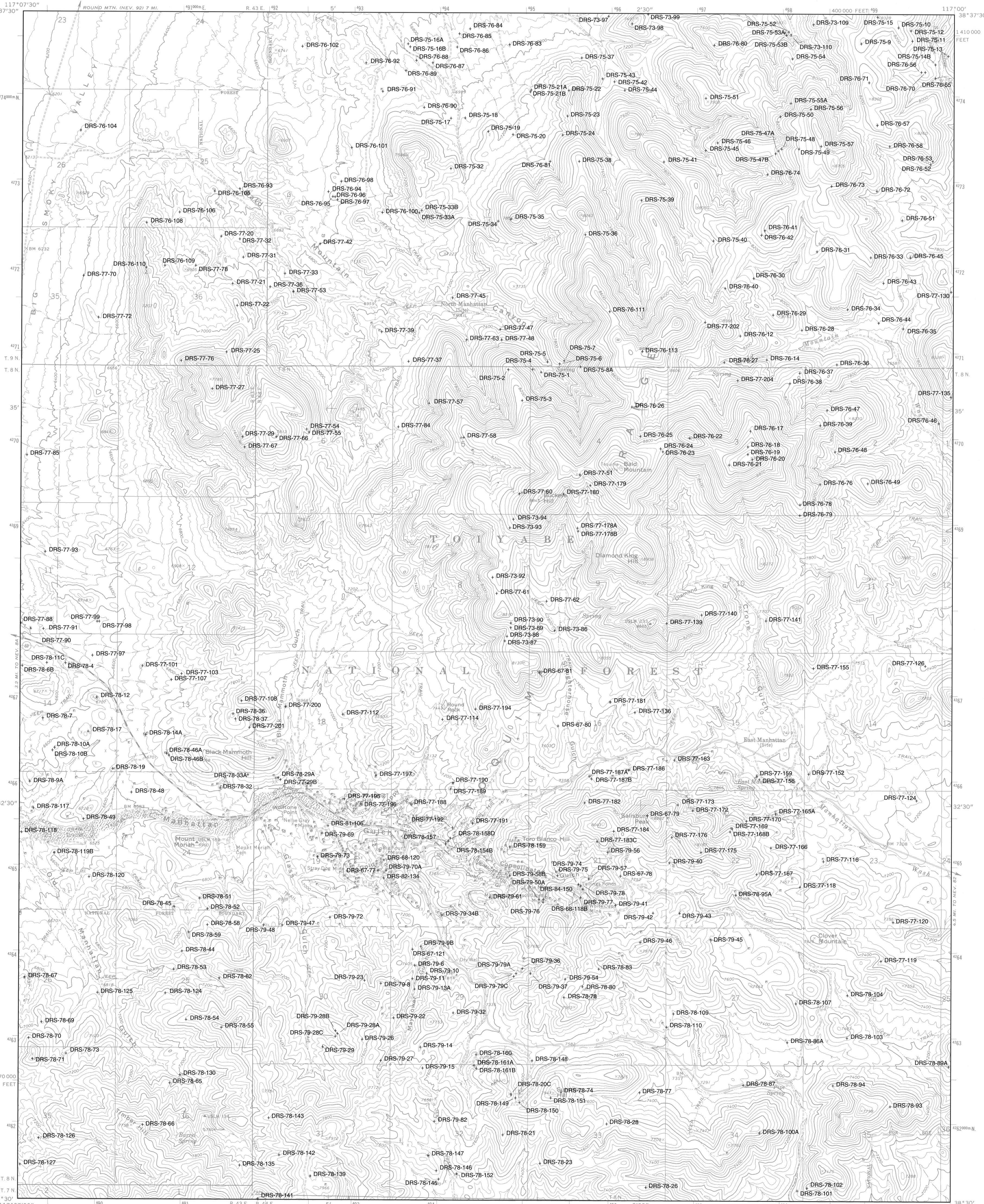
Round Mountain



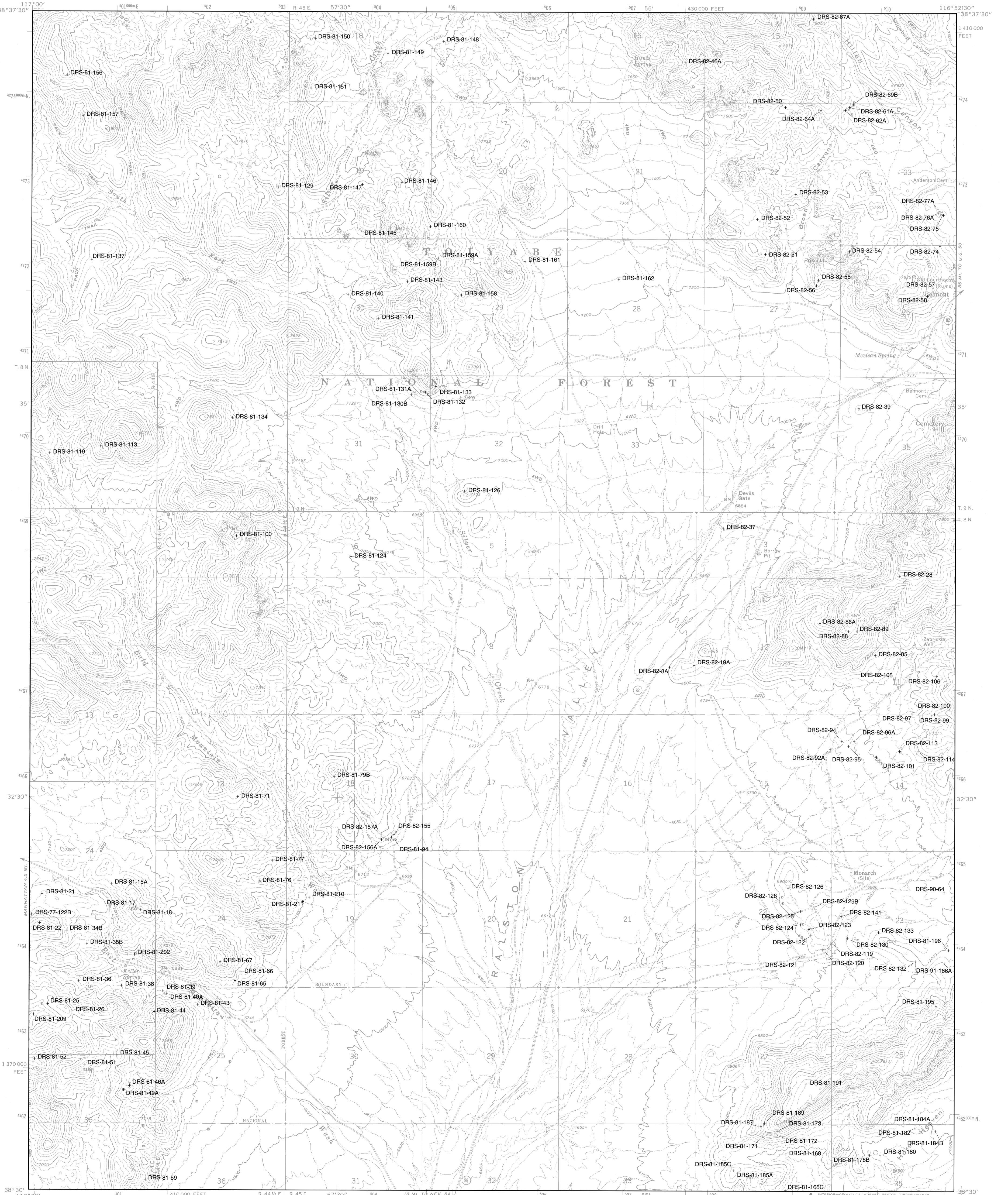
Jefferson



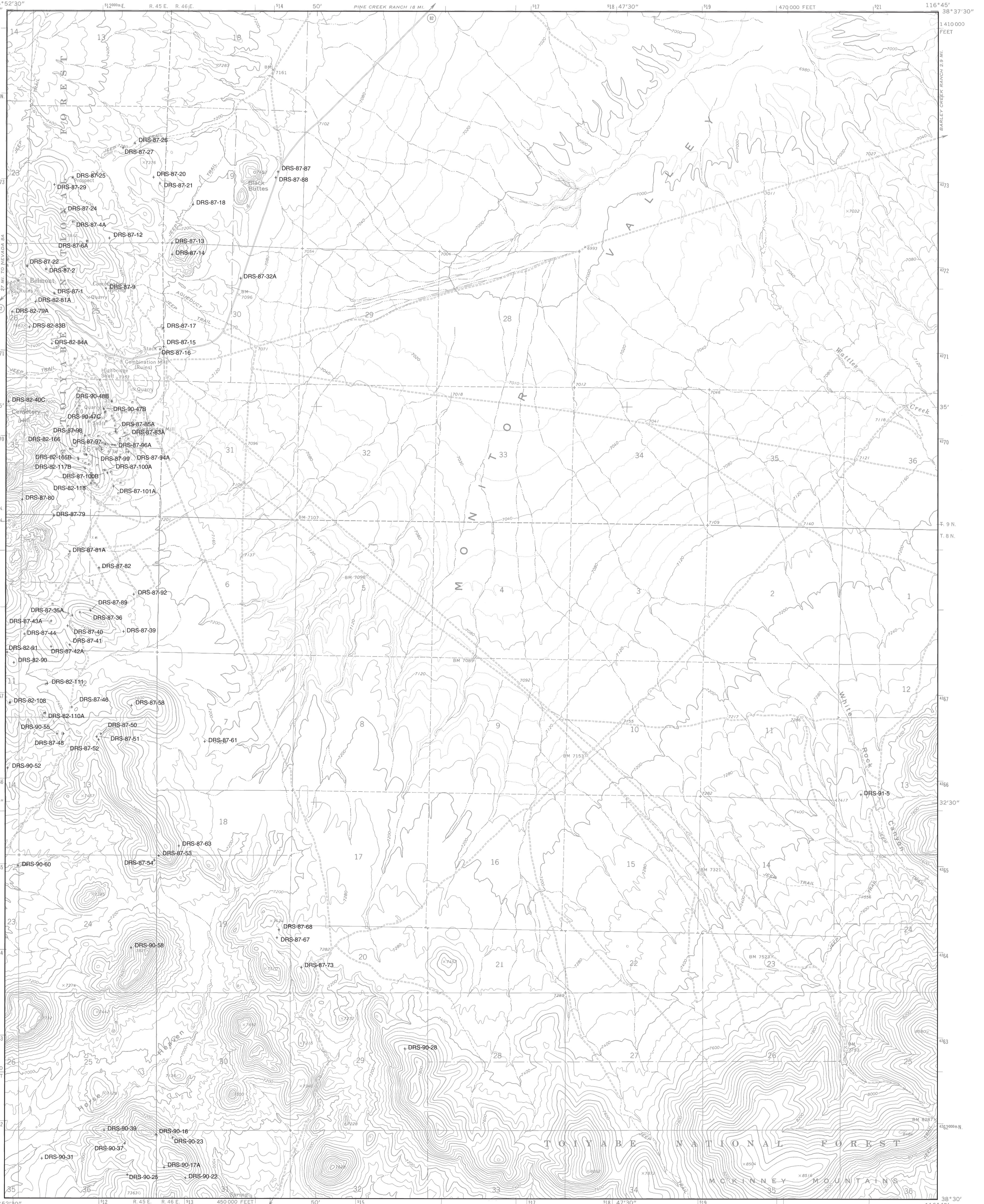
Corcoran Canyon



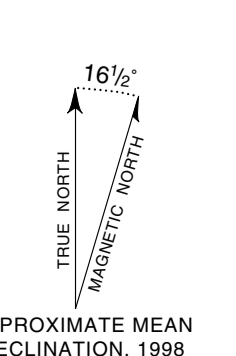
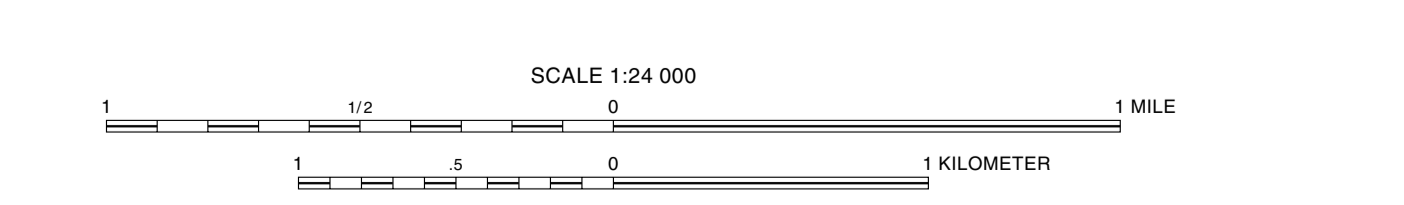
Manhattan



Belmont West



Belmont East



**MAPS SHOWING THE LOCATIONS OF ROCK SAMPLES FROM PART OF THE SOUTHERN TOQUIMA RANGE AND ADJACENT AREAS, NYE COUNTY, NEVADA**

By Daniel R. Shawe and J. D. Hoffman  
2003

ROUND MOUNTAIN 1:25,000	JEFFERSON 1:25,000	CORCORAN CANYON 1:25,000
MANHATTAN 1:25,000	BELMONT WEST 1:25,000	BELMONT EAST 1:25,000

MAP LOCATION

Scale 1:25,000  
1 inch = 2000 feet  
1 centimeter = 20 meters

Rock sample locations are shown as black dots. Contour lines are shown as thin gray lines. The map is a reproduction of a topographic map published by the U.S. Geological Survey. The map is a reproduction of a topographic map published by the U.S. Geological Survey. The map is a reproduction of a topographic map published by the U.S. Geological Survey.