

§ 17.95, Note

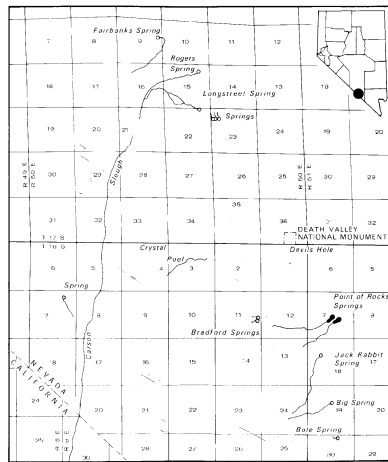
50 CFR Ch. I (10–1–06 Edition)

ASH MEADOWS NAUCORID (*Ambrysus amargosus*)

Nevada, Nye County, Point of Rocks Springs and their immediate outflows in SE¼ sec. 7, T18S, R51E.

Known primary constituent elements include flowing warm water over rock and gravel substrate.

NOTE: Map follows:



[42 FR 47840, Sept. 22, 1977]

EDITORIAL NOTE: For FEDERAL REGISTER citations affecting § 17.95, see the List of CFR Sections Affected, which appears in the Finding Aids section of the printed volume and on GPO Access.

EFFECTIVE DATE NOTE: At 71 FR 54371, Sept. 14, 2006, § 17.95(d) was amended by adding an entry for "Mountain yellow-legged frog (*Rana muscosa*), southern California DPS", effective Oct. 16, 2006. For the convenience of the user, the added text is set forth as follows:

§ 17.95 Critical habitat—fish and wildlife.

\* \* \* \* \*

(d) *Amphibians.*

\* \* \* \* \*

MOUNTAIN YELLOW-LEGGED FROG (*Rana muscosa*), SOUTHERN CALIFORNIA DPS

(1) Critical habitat units are depicted for Los Angeles, San Bernardino, and Riverside Counties, California, on the maps below.

(2) The primary constituent elements of critical habitat for the mountain yellow-legged frog are:

(i) Water source(s) found between 1,214 to 7,546 ft (370 to 2,300 m) in elevation that are permanent. Water sources include, but are not limited to, streams, rivers, perennial creeks (or permanent plunge pools within intermittent creeks), pools (*i.e.*, a body of impounded water that is contained above a natural dam), and other forms of aquatic habitat. The water source should maintain a natural flow pattern including periodic natural flooding. Aquatic habitats that are used by mountain yellow-legged frog for breeding purposes must maintain water during the entire tadpole growth phase, which can be up to 2 years duration. During periods of drought, or less than average rainfall, these breeding sites may not hold water long enough for individuals to complete metamorphosis, but they would still be considered essential breeding habitat in wetter years. Further, the aquatic habitat includes:

(A) Bank and pool substrates consisting of varying percentages of soil or silt, sand, gravel cobble, rock, and boulders;

(B) Open gravel banks and rocks projecting above or just beneath the surface of the water for sunning posts;

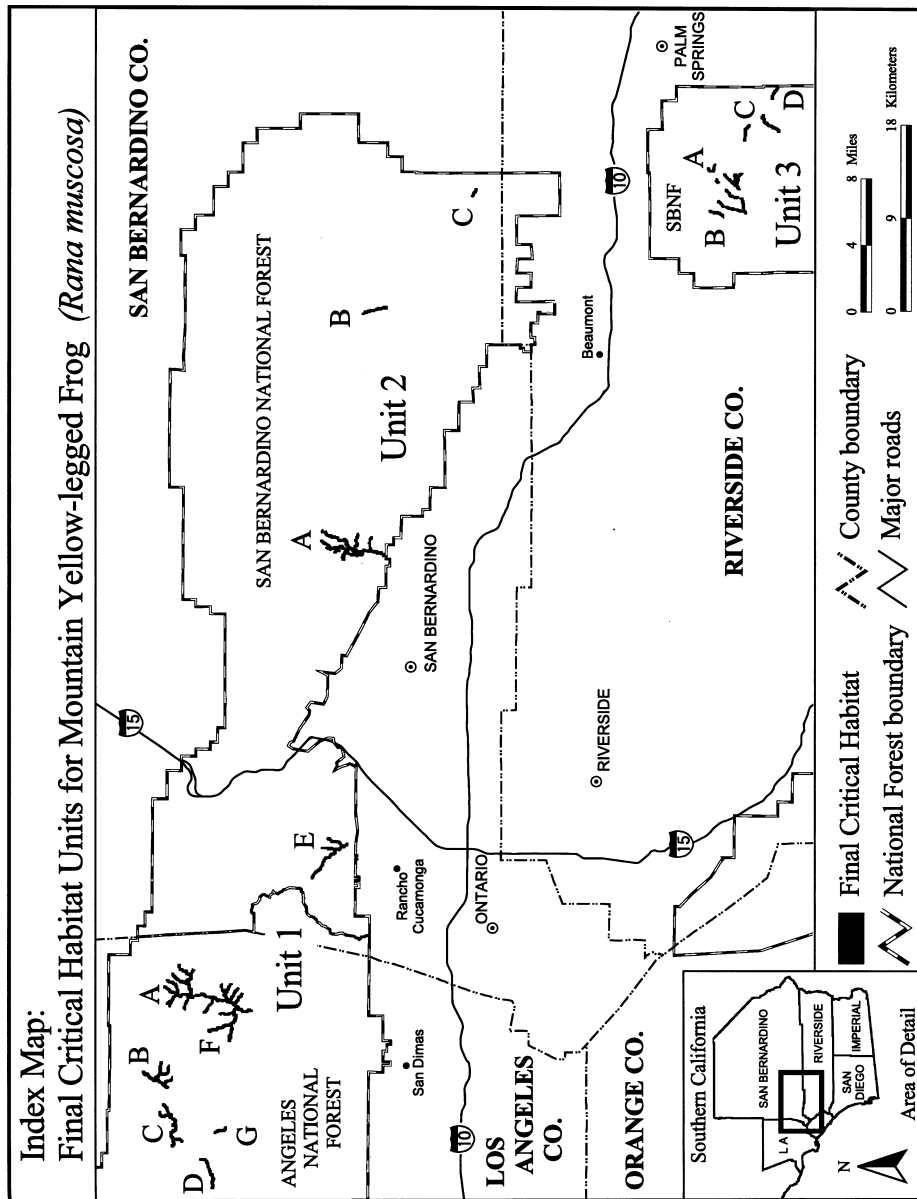
(C) Aquatic refugia, including pools with bank overhangs, downfall logs or branches, and/or rocks to provide cover from predators; and

(D) Streams or stream reaches between known occupied sites that can function as corridors for adults and frogs for movement between aquatic habitats used as breeding and/or foraging sites.

(ii) Riparian habitat and upland vegetation (*e.g.*, ponderosa pine, montane hardwood-conifer, montane riparian woodlands, and chaparral) extending 262 feet (80 m) from each side of the centerline of each identified stream and its tributaries, that provides areas for feeding and movement of mountain yellow-legged frog, with a canopy overstory not exceeding 85 percent that allows sunlight to reach the stream and thereby provides basking areas for the species.

(3) Critical habitat does not include man-made structures existing on the effective date of this rule and not containing one or more of the primary constituent elements, such as buildings, aqueducts, airports, and roads, and the land on which such structures are located.

(4) *Critical Habitat Map Units.* Data layers defining map units were created on a base of USGS 7.5' quadrangles, and critical habitat units were then mapped using Universal Transverse Mercator (UTM) coordinates. *Note:* Index map of critical habitat units for the southern California DPS of the mountain yellow-legged frog (Map 1) follows:



(5) Unit 1: San Gabriel Mountains Unit, Los Angeles and San Bernardino Counties, California. From USGS 1:24,000 quadrangle maps Crystal Lake, Cucamonga Peak, Mount San Antonio Valyermo, and Waterman Mountain, California.

(i) Subunit 1A: San Gabriel River, East Fork Angeles National Forest, Los Angeles County, California.

(A) Land bounded by the following UTM North American Datum of 1927 (NAD27) coordinates (E, N): 434100, 3803300; 434400, 3803300; 434400, 3803100; 434300, 3803100; 434300,



U.S. Fish and Wildlife Serv., Interior

§ 17.95, Note

3796600; 432500, 3796600; 432500, 3796900; 432600, 3796900; 432600, 3797100; 432500, 3797100; 432500, 3797400; 432600, 3797400; 432600, 3797500; 432800, 3797500; 432800, 3797700; 432700, 3797700; 432700, 3797800; 432300, 3797800; 432300, 3797900; 432200, 3797900; 432200, 3798000; 432100, 3798000; 432100, 3798100; 432000, 3798100; 432000, 3798200; 431700, 3798200; 431700, 3798300; 431600, 3798300; 431600, 3798400; 431400, 3798400; 431400, 3798500; 431300, 3798500; 431300, 3798600; 431200, 3798600; 431200, 3798900; 431400, 3798900; 431400, 3798800; 431500, 3798800; 431500, 3798700; 431600, 3798700; 431600, 3798600; 431800, 3798600; 431800, 3798500; 431900, 3798500; 431900, 3798400; 432100, 3798400; 432100, 3798300; 432200, 3798300; 432200, 3798200; 432300, 3798200; 432300, 3798100; 432400, 3798100; 432400, 3798000; 432800, 3798000; 432800, 3797900; 432900, 3797900; 432900, 3798200; 433000, 3798200; 433000, 3798700; 433100, 3798700; 433100, 3798900; 433300, 3798900; 433300, 3799100; 433200, 3799100; 433200, 3799300; 433100, 3799300; 433100, 3799900; 432900, 3799900; 432900, 3800300; 433000, 3800300; 433000, 3800400; 432900, 3800400; 432900, 3800500; 432600, 3800500; 432600, 3800600; 432400, 3800600; 432400, 3800700; 432200, 3800700; 432200, 3800800; 431600, 3800800; 431600, 3801000; 431700, 3801000; 431700, 3801100; 432000, 3801100; 432000, 3801000; 432400, 3801000; 432400, 3801000; 432400, 3800900; 432600, 3800900; 432700, 3800800; 432700, 3800700; 433100, 3800700; 433100, 3800600; 433200, 3800600; 433300, 3801200; 433100, 3801200; 433100, 3801300; 433000, 3801300; 433000, 3801600; 433100, 3801600; 433100, 3802000; 433000, 3802000; 433000, 3802100; 432800, 3802100; 432800, 3802200; 432600, 3802200; 432600, 3802300; 432400, 3802300; 432400, 3802400; 432200, 3802400; 432200, 3802500; 431900, 3802500; 431900, 3802700; 432200, 3802700; 432200, 3803000; 432400, 3803000; 432400, 3802900; 432500, 3802900; 432500, 3802800; 432600, 3802800; 432600, 3802700; 432700, 3802700; 432700, 3802500; 432800, 3802500; 432800, 3802400; 433000, 3802400; 3802400; 433000, 3802300; 433200, 3802300; 433200, 3802100; 433300, 3802100; 433400, 3802100; 433400, 3802100; 433500, 3802100; 433500, 3802500; 433600, 3802500; 433600, 3802700; 433800, 3802700; 433800, 3802800; 433900, 3802800; 433900, 3802900; 434000, 3802900; 434000, 3803100; 434100, 3803100; returning to 434100, 3803300.

(B) Map depicting subunit 1A is located at paragraph (5)(vi)(B) of this section.

(ii) Subunit 1B: Big Rock Creek, South Fork, Angeles National Forest, Los Angeles County, California.

(A) Land bounded by the following UTM NAD27 coordinates (E, N): 424400, 3805700; 424600, 3805700; 424600, 3805400; 424500, 3805400; 424500, 3805300; 424300, 3805300; 424300, 3805200; 424400, 3805200; 424400, 3805000; 424300, 3805000; 424300, 3804900; 424100, 3804900; 424100, 3804800; 424000, 3804800; 424000, 3804700; 423900, 3804700; 423900, 3804500; 423800, 3804500; 423700, 3804400; 423700, 3804400; 423700, 3804300; 424000, 3804300; 424000, 3804100; 424100, 3804100; 424100, 3804000; 424200, 3804000; 424200, 3803900; 424300, 3803900; 424300, 3803800; 425200, 3803800; 425200, 3803700; 425700, 3803700; 425700, 3803400; 425400, 3803400; 425400, 3803500; 424400, 3803500; 424400, 3803000; 424500, 3803000; 424500, 3802900; 425100, 3802900; 425100, 3802800; 425300, 3802800; 424300, 3802800; 424300, 3802700; 424300, 3802700; 424300, 3802600; 424200, 3802600; 424200, 3802500; 423700, 3802500; 423700, 3802400; 424000, 3802400; 424000, 3802300; 423500, 3802300; 423500, 3802200; 423600, 3802200; 423600, 3802100; 423700, 3802100; 423700, 3802000; 423800, 3802000; 423800, 3801900; 423800, 3801800; 423800, 3801800; 417900, 3801800; 417900, 3801900; 417800, 3801900; 417800, 3802000; 417700, 3802000; 417700, 3802100; 417600, 3802100; 417600, 3802300; 417500, 3802300; 417500, 3802400; 417300, 3802400; 417300, 3802300; 417200, 3802300; 417200, 3802200; 417000, 3802200; 417000, 3801400; 416900, 3801400; 416900, 3801300; 416800, 3801300; 416800, 3801200; 416700, 3801200; 416700, 3801100; 416600, 3801100; 416600, 3801200; 416500, 3801200; 416500, 3801400; 416700, 3801400; 416700, 3802100; 416500, 3802100; 416500, 3802000; 416200, 3802000; 416200, 3802100; 416100, 3802100; 416100, 3802200;

§ 17.95, Note

50 CFR Ch. I (10–1–06 Edition)

416000, 3802200; 416000, 3802500; 416300, 3802500;  
416300, 3802300; 416500, 3802300; 416500, 3802400;  
416900, 3802400; 416900, 3802500; 417100, 3802500;  
417100, 3802600; 417800, 3802600; 417800, 3802400;  
417900, 3802400; 417900, 3802300; 418000, 3802300;  
418000, 3802100; 418300, 3802100; 418300, 3802400;  
418600, 3802400; 418600, 3802200; 419000, 3802200;  
419000, 3802400; 419100, 3802400; 419100, 3802500;  
419200, 3802500; 419200, 3802700; 419400, 3802700;  
419400, 3803100; 419300, 3803100; 419300, 3803600;  
419400, 3803600; 419400, 3803700; 419500, 3803700;  
returning to 419500, 3803800.

(B) Map depicting subunit 1C is located at paragraph (5)(vi)(B) of this entry.

(iv) Subunit 1D: Devil's Canyon, Angeles National Forest, Los Angeles County, California.

(A) Land bounded by the following UTM NAD27 coordinates (E, N): 414500, 3799300;  
414700, 3799300; 414700, 3798600; 414600, 3798600;  
414600, 3798500; 414500, 3798500; 414500, 3798400;  
414300, 3798400; 414300, 3798300; 413900, 3798300;  
413900, 3798200; 413600, 3798200; 413600, 3798100;  
413400, 3798100; 413400, 3798000; 413000, 3798000;  
413000, 3797800; 412600, 3797800; 412600, 3797700;  
412500, 3797700; 412500, 3797600; 412300, 3797600;  
412300, 3797700; 412100, 3797700; 412100, 3797800;  
411800, 3797800; 411800, 3797700; 411400, 3797700;  
411400, 3797800; 411300, 3797800; 411300, 3798100;  
411500, 3798100; 411500, 3798000; 411800, 3798000;  
411800, 3798100; 412200, 3798100; 412200, 3798000;  
412300, 3798000; 412300, 3797900; 412400, 3797900;  
412400, 3798000; 412700, 3798000; 412700, 3798100;  
412800, 3798100; 412800, 3798200; 413100, 3798200;  
413100, 3798300; 413400, 3798300; 413400, 3798400;  
413700, 3798400; 413700, 3798500; 414100, 3798500;  
414100, 3798600; 414200, 3798600; 414200, 3798700;  
414400, 3798700; 414400, 3798800; 414500, 3798800;  
returning to 414500, 3799300.

(B) Map depicting subunit 1D is located at paragraph (5)(vi)(B) of this entry.

(v) Subunit 1F: San Gabriel River, East Fork, Iron Fork, Los Angeles County, California.

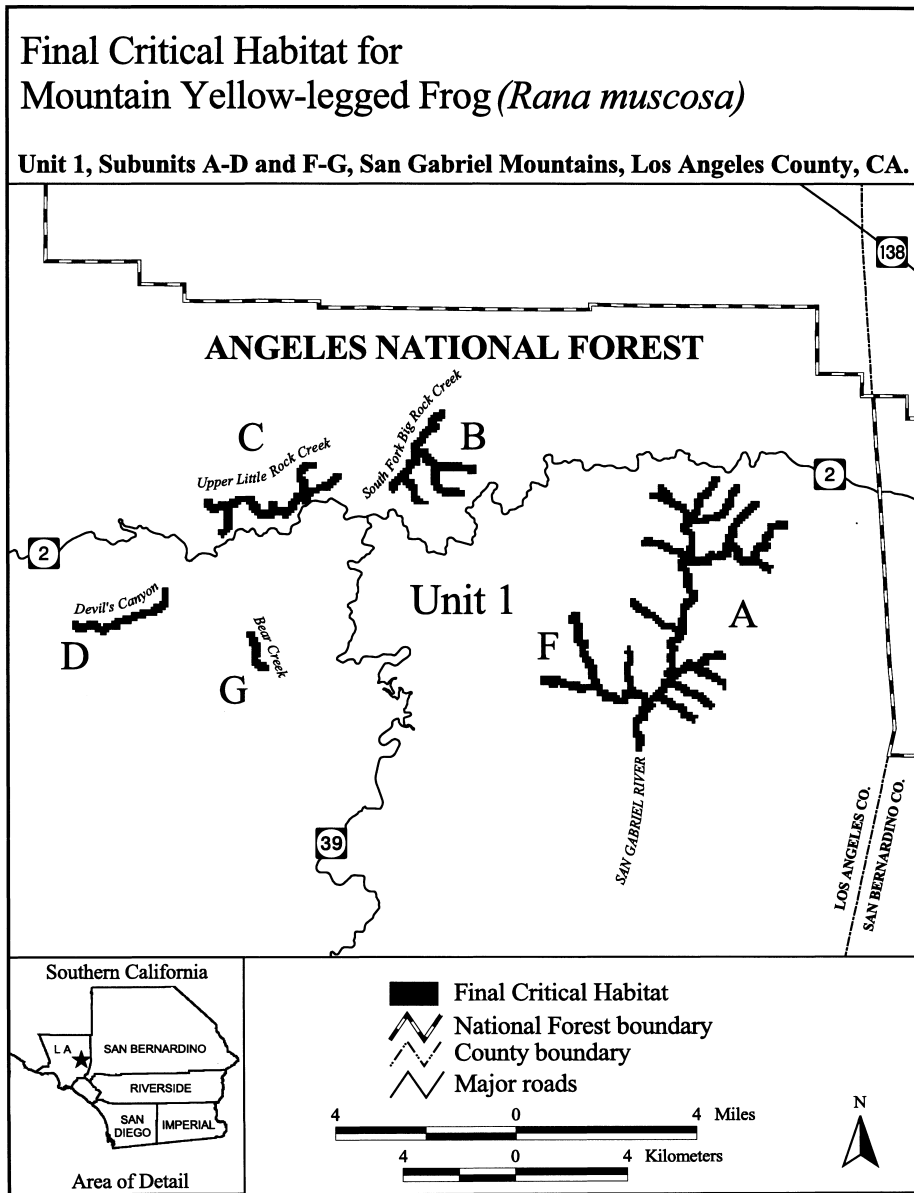
(A) Land bounded by the following UTM NAD27 coordinates (E, N): 429100, 3798400;  
429400, 3798400; 429400, 3798000; 429500, 3798000;  
429500, 3797400; 429700, 3797400; 429700, 3797100;  
429600, 3797100; 429600, 3797000; 429700, 3797000;  
429700, 3796800; 429800, 3796800; 429800, 3796700;  
429900, 3796700; 429900, 3796500; 430000, 3796500;  
430000, 3796000; 430100, 3796000; 430100, 3795800;  
430200, 3795800; 430200, 3795500; 430100, 3795500;  
430100, 3795400; 430000, 3795400; 430000, 3795600;  
429600, 3795600; 429600, 3795500; 429300, 3795500;  
429300, 3795600; 429000, 3795600; 429000, 3795700;  
428700, 3795700; 428700, 3795800; 428600, 3795800;  
428600, 3795700; 428300, 3795700; 428300, 3795800;  
428000, 3795800; 428000, 3796100; 428700, 3796100;  
428700, 3796000; 428900, 3796000; 428900, 3795900;  
429400, 3795900; 429400, 3795800; 429800, 3795800;  
429800, 3796000; 429700, 3796000; 429700, 3796400;  
429600, 3796400; 429600, 3796600; 429500, 3796600;  
429500, 3796800; 429400, 3796800; 429400, 3797200;  
429300, 3797200; 429300, 3797300; 429200, 3797300;  
429200, 3798000; 429000, 3798000; 429000, 3798300;  
429100, 3798300; returning to 429100, 3798400.

(B) Map depicting subunit 1F is located at paragraph (5)(vi)(B) of this entry.

(vi) Subunit 1G: Bear Creek, Angeles National Forest, Los Angeles County, California.

(A) Land bounded by the following UTM NAD27 coordinates (E, N): 417500, 3797700;  
417800, 3797700; 417800, 3797500; 417900, 3797500;  
417900, 3797300; 418000, 3797300; 418000, 3796800;  
417900, 3796800; 417900, 3796700; 418000, 3796700;  
418000, 3796600; 418200, 3796600; 418200, 3796500;  
418300, 3796500; 418300, 3796300; 417900, 3796300;  
417900, 3796400; 417800, 3796400; 417800, 3796500;  
417700, 3796500; 417700, 3797200; 417600, 3797200;  
417600, 3797500; 417500, 3797500; returning to 417500, 3797700.

(B) Map of Unit 1, with subunits 1A, 1B, 1C, 1D, 1F, and 1G (Map 2), follows:



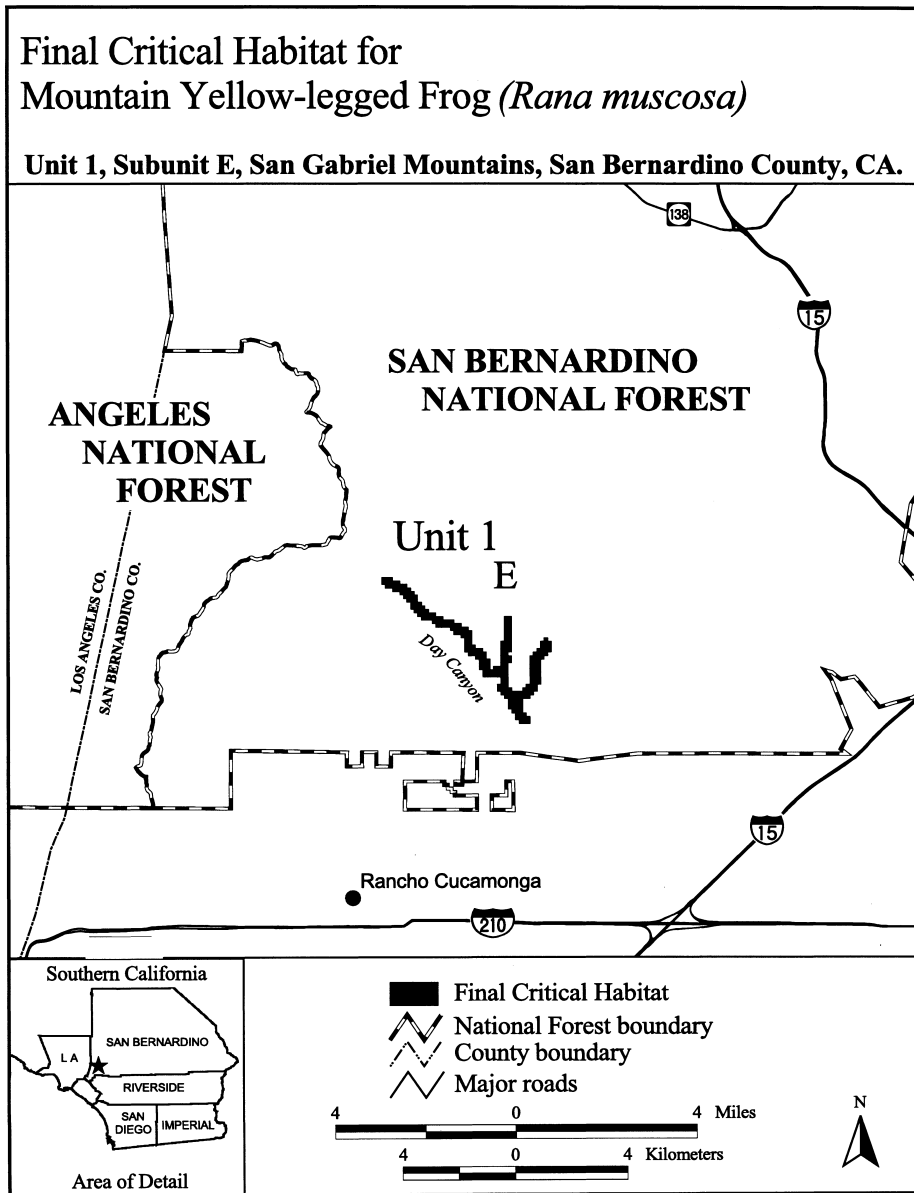
(vii) Subunit 1E: Day Canyon, San Bernardino National Forest, San Bernardino County, California. 447200, 3786600; 447200, 3786500; 447300, 3786500; 447300, 3786400; 447400, 3786400; 447400, 3786200; 447500, 3786200; 447500, 3786100; 447600, 3786100; 447600, 3786000; 447700, 3786000; 447700, 3785900; 447900, 3785900; 447900, 3785800; 448100, 3785800; 448100, 3785700; 448400, 3785700; 448400, 3785600; 446900, 3786700; 447100, 3786700; 447100, 3786600; 448600, 3785600; 448600, 3785500; 448800, 3785500;

(A) Land bounded by the following UTM NAD27 coordinates (E, N): 446400, 3786900; 446700, 3786900; 446700, 3786800; 446900, 3786800; 446900, 3786700; 447100, 3786700; 447100, 3786600;

**§ 17.95, Note**

**50 CFR Ch. I (10–1–06 Edition)**

448800, 3785400; 448900, 3785400; 448900, 3785000; 450200, 3782800; 450200, 3782900; 450100, 3782900;  
449000, 3785000; 449000, 3784900; 449200, 3784900; 450100, 3783100; 450000, 3783100; 450000, 3783200;  
449200, 3784800; 449300, 3784800; 449300, 3784600; 449900, 3783200; 449900, 3783500; 449800, 3783500;  
449400, 3784600; 449400, 3784300; 449500, 3784300; 449800, 3783600; 449700, 3783600; 449700, 3783700;  
449500, 3784400; 449700, 3784400; 449700, 3785100; 449600, 3783700; 449600, 3783900; 449700, 3783900;  
449800, 3785100; 449800, 3785800; 450000, 3785800; 449700, 3784100; 449200, 3784100; 449200, 3784300;  
450000, 3784800; 449900, 3784800; 449900, 3784700; 449100, 3784300; 449100, 3784600; 449000, 3784600;  
450000, 3784700; 450000, 3784500; 449900, 3784500; 449000, 3784700; 448800, 3784700; 448800, 3784800;  
449900, 3783800; 450000, 3783800; 450000, 3783700; 448700, 3784800; 448700, 3785200; 448600, 3785200;  
450300, 3783700; 450300, 3783800; 450400, 3783800; 448600, 3785300; 448400, 3785300; 448400, 3785400;  
450400, 3783900; 450500, 3783900; 450500, 3784700; 448300, 3785400; 448300, 3785500; 447900, 3785500;  
450600, 3784700; 450600, 3784800; 450700, 3784800; 447900, 3785600; 447800, 3785600; 447800, 3785700;  
450700, 3784900; 450800, 3784900; 450800, 3785100; 447500, 3785700; 447500, 3785800; 447400, 3785800;  
450900, 3785100; 450900, 3785200; 451000, 3785200; 447400, 3785900; 447300, 3785900; 447300, 3786000;  
451000, 3785100; 451100, 3785100; 451100, 3784800; 447200, 3786000; 447200, 3786200; 447100, 3786200;  
451000, 3784800; 451000, 3784700; 450900, 3784700; 447100, 3786300; 447000, 3786300; 447000, 3786400;  
450900, 3784600; 450800, 3784600; 450800, 3783900; 446900, 3786400; 446900, 3786500; 446700, 3786500;  
450700, 3783900; 450700, 3783700; 450600, 3783700; 446700, 3786600; 446500, 3786600; 446500, 3786700;  
450600, 3783600; 450500, 3783600; 450500, 3783500; 446400, 3786700; returning to 446400, 3786900.  
450300, 3783500; 450300, 3783100; 450400, 3783100; (B) Map of subunit 1E (Map 3) follows:  
450400, 3783000; 450500, 3783000; 450500, 3782800;



(6) Unit 2: San Bernardino Mountains, San Bernardino National Forest, San Bernardino County, California. From USGS 1:24,000 quadrangle maps Big Bear Lake, Catclaw Flat and Harrison Mountain, California.

(i) Subunit 2A: City Creek, East and West Forks, San Bernardino National Forest, San Bernardino County, California.

(A) Land bounded by the following UTM NAD27 coordinates (E, N): 483800, 3785100; 483900, 3785100; 483900, 3785200; 484000, 3785200; 484000, 3785400; 484100, 3785400; 484100, 3785600;

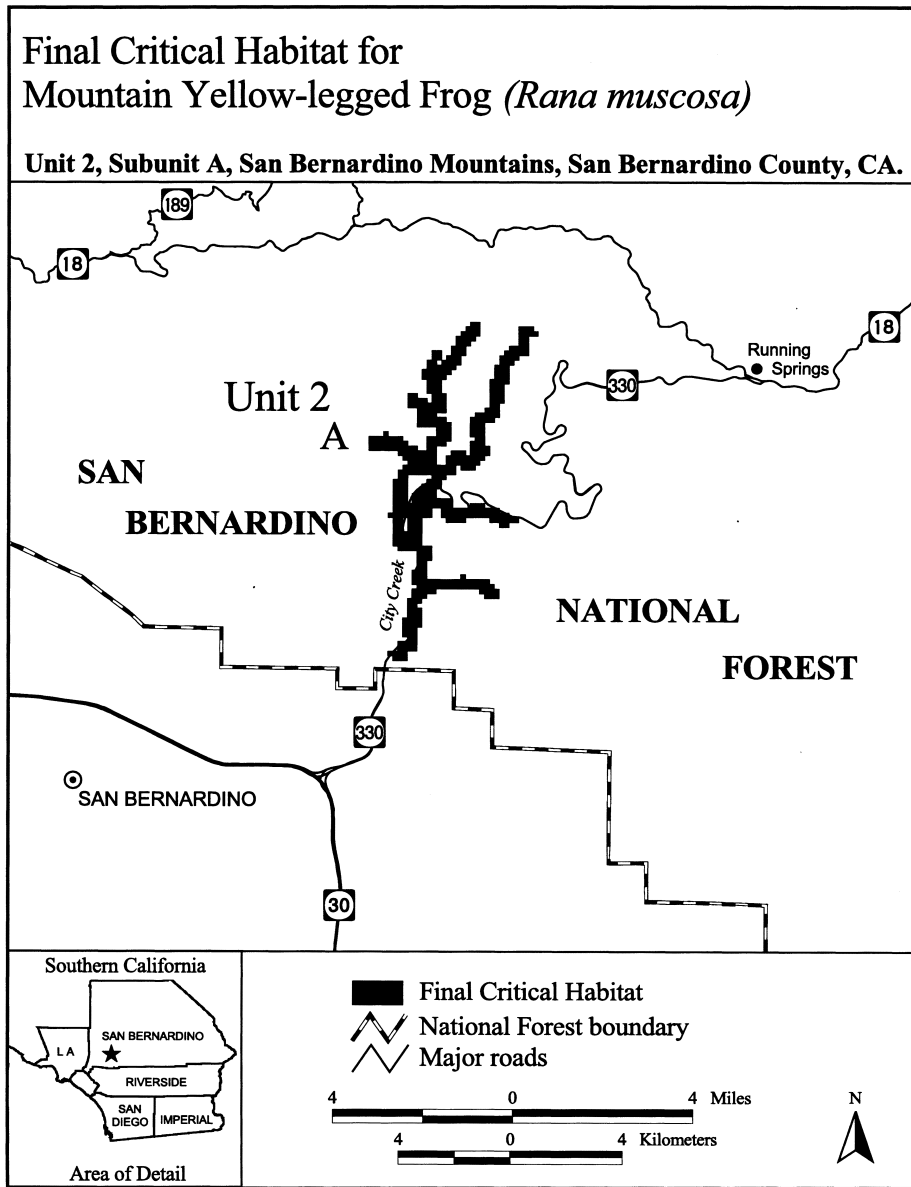


§ 17.95, Note

50 CFR Ch. I (10–1–06 Edition)

484200, 3785600; 484200, 3785700; 484300, 3785700; 484200, 3780600; 484300, 3780600; 484300, 3780500;  
 484300, 3785800; 484400, 3785800; 484400, 3785900; 484800, 3780500; 484800, 3780400; 484900, 3780400;  
 484600, 3785900; 484600, 3785600; 484500, 3785600; 484900, 3780300; 485000, 3780300; 485000, 3780100;  
 484500, 3785500; 484400, 3785500; 484400, 3785400; 484700, 3780100; 484700, 3780200; 484600, 3780200;  
 484300, 3785400; 484300, 3785200; 484200, 3785200; 484600, 3780300; 483700, 3780300; 483700, 3780200;  
 484200, 3785000; 484100, 3785000; 484100, 3784900; 483500, 3780200; 483500, 3780100; 483400, 3780100;  
 484000, 3784900; 484000, 3784800; 483900, 3784800; 483400, 3780000; 483300, 3780000; 483300, 3779900;  
 483900, 3784700; 483800, 3784700; 483800, 3784400; 483400, 3779900; 483400, 3779500; 483300, 3779500;  
 483900, 3784400; 483900, 3784000; 483700, 3784000; 483300, 3779000; 483100, 3779000; 483100, 3778800;  
 483700, 3783900; 483900, 3783900; 483900, 3783800; 482800, 3778800; 482800, 3778900; 482700, 3778900;  
 484000, 3783800; 484000, 3783400; 483900, 3783400; 482700, 3779000; 482900, 3779000; 482900, 3779200;  
 483900, 3783300; 483700, 3783300; 483700, 3782900; 483100, 3779200; 483100, 3779300; 483000, 3779300;  
 483900, 3782900; 483900, 3783100; 484000, 3783100; 483000, 3779700; 483100, 3779700; 483100, 3780100;  
 484000, 3783200; 484300, 3783200; 484300, 3783100; 483200, 3780100; 483200, 3780300; 483300, 3780300;  
 484400, 3783100; 484400, 3783400; 484500, 3783400; 483300, 3780400; 483200, 3780400; 483200, 3780700;  
 484500, 3783500; 484400, 3783500; 484400, 3783900; 483300, 3780700; 483300, 3781100; 482900, 3781100;  
 484500, 3783900; 484500, 3784000; 484700, 3784000; 482900, 3781200; 482800, 3781200; 482800, 3781800;  
 484700, 3784100; 484800, 3784100; 484800, 3784700; 482700, 3781800; 482700, 3781900; 482800, 3781900;  
 484900, 3784700; 484900, 3785000; 485000, 3785000; 482800, 3782600; 482900, 3782600; 482900, 3782800;  
 485000, 3785200; 485100, 3785200; 485100, 3785300; 483000, 3782800; 483000, 3782900; 483100, 3782900;  
 485200, 3785300; 485200, 3785400; 485400, 3785400; 483100, 3783000; 483000, 3783000; 483000, 3783100;  
 485400, 3785800; 485700, 3785800; 485700, 3785700; 482900, 3783100; 482900, 3783200; 482300, 3783200;  
 485800, 3785700; 485800, 3785600; 485600, 3785600; 482300, 3783500; 482600, 3783500; 482600, 3783600;  
 485600, 3785200; 485400, 3785200; 485400, 3785100; 482700, 3783600; 482700, 3783500; 483000, 3783500;  
 485300, 3785100; 485300, 3785000; 485200, 3785000; 483000, 3783400; 483100, 3783400; 483100, 3783300;  
 485200, 3784600; 485100, 3784600; 485100, 3784200; 483300, 3783300; 483300, 3783200; 483500, 3783200;  
 485000, 3784200; 485000, 3783900; 484900, 3783900; 483500, 3783500; 483700, 3783500; 483700, 3783700;  
 484900, 3783800; 484700, 3783800; 484700, 3783300; 483300, 3783700; 483300, 3784100; 483100, 3784100;  
 484800, 3783300; 484800, 3783100; 484700, 3783100; 483100, 3784400; 483300, 3784400; 483300, 3784300;  
 484700, 3783000; 484600, 3783000; 484600, 3782900; 483500, 3784300; 483500, 3784200; 483600, 3784200;  
 484500, 3782900; 484500, 3782800; 484200, 3782800; 483600, 3784400; 483500, 3784400; 483500, 3784700;  
 484200, 3782900; 484100, 3782900; 484100, 3782700; 483400, 3784700; 483400, 3784900; 483500, 3784900;  
 483900, 3782700; 483900, 3782600; 483800, 3782600; 483500, 3785100; 483600, 3785100; 483600, 3785300;  
 483800, 3782400; 483700, 3782400; 483700, 3782200; 483800, 3785300; returning to 483800, 3785100;  
 484000, 3782200; 484000, 3782000; 484400, 3782000; excluding land bounded by 483700, 3785100;  
 484400, 3782100; 484700, 3782100; 484700, 3782000; 483800, 3785100; 483800, 3785000; 483700, 3785000;  
 485000, 3782000; 485000, 3781900; 485200, 3781900; 483700, 3785100; land bounded by 483100,  
 485200, 3781800; 485400, 3781800; 485400, 3781700; 3782700; 483600, 3782700; 483600, 3782600; 483500,  
 485200, 3781700; 485200, 3781600; 485000, 3781600; 3782600; 483500, 3782500; 483400, 3782500; 483400,  
 485000, 3781700; 484800, 3781700; 484800, 3781800; 3782400; 483300, 3782400; 483300, 3782300; 483200,  
 484300, 3781800; 484300, 3781700; 483900, 3781700; 3782300; 483200, 3782100; 483100, 3782100; 483100,  
 483900, 3781800; 483800, 3781800; 483800, 3782000; 3782700; and land bounded by 483000, 3781800;  
 483600, 3782000; 483600, 3781800; 483400, 3781800; 483100, 3781800; 483100, 3781800; 483000, 3781500;  
 483400, 3781200; 483600, 3781200; 483600, 3780900; 483000, 3781800.  
 483500, 3780900; 483500, 3780500; 484200, 3780500;

(B) Map of subunit 2A (Map 4) follows:



(ii) Subunit 2B: Barton Creek, East Fork, 510500, 3780700; 510500, 3780400; 510600, 3780400; 510600, 3780200; 510500, 3780200; 510500, 3780100; 510600, 3780100; 510600, 3779800; 510700, 3779800; 510700, 3779600; 510800, 3779600; 510800, 3779400; 510700, 3779400; 510700, 3779300; 510800, 3779300; 510800, 3779000; 510900, 3779000; 510900, 3778500; 510200, 3781100; 510400, 3781100; 510400, 3780700; 510600, 3778500; 510600, 3779100; 510500, 3779100;

(A) Land bounded by the following UTM NAD27 coordinates (E, N): 510000, 3781300; 510100, 3781300; 510100, 3781200; 510200, 3781200; 510200, 3781100; 510400, 3781100; 510400, 3780700;

**§ 17.95, Note**

510500, 3779600; 510400, 3779600; 510400, 3779900;  
510300, 3779900; 510300, 3780400; 510200, 3780400;  
510200, 3780700; 510100, 3780700; 510100, 3781000;  
510000, 3781000; returning to 510000, 3781300.

(B) Map depicting subunit 2B is located at paragraph (6)(iii)(B) of this entry.

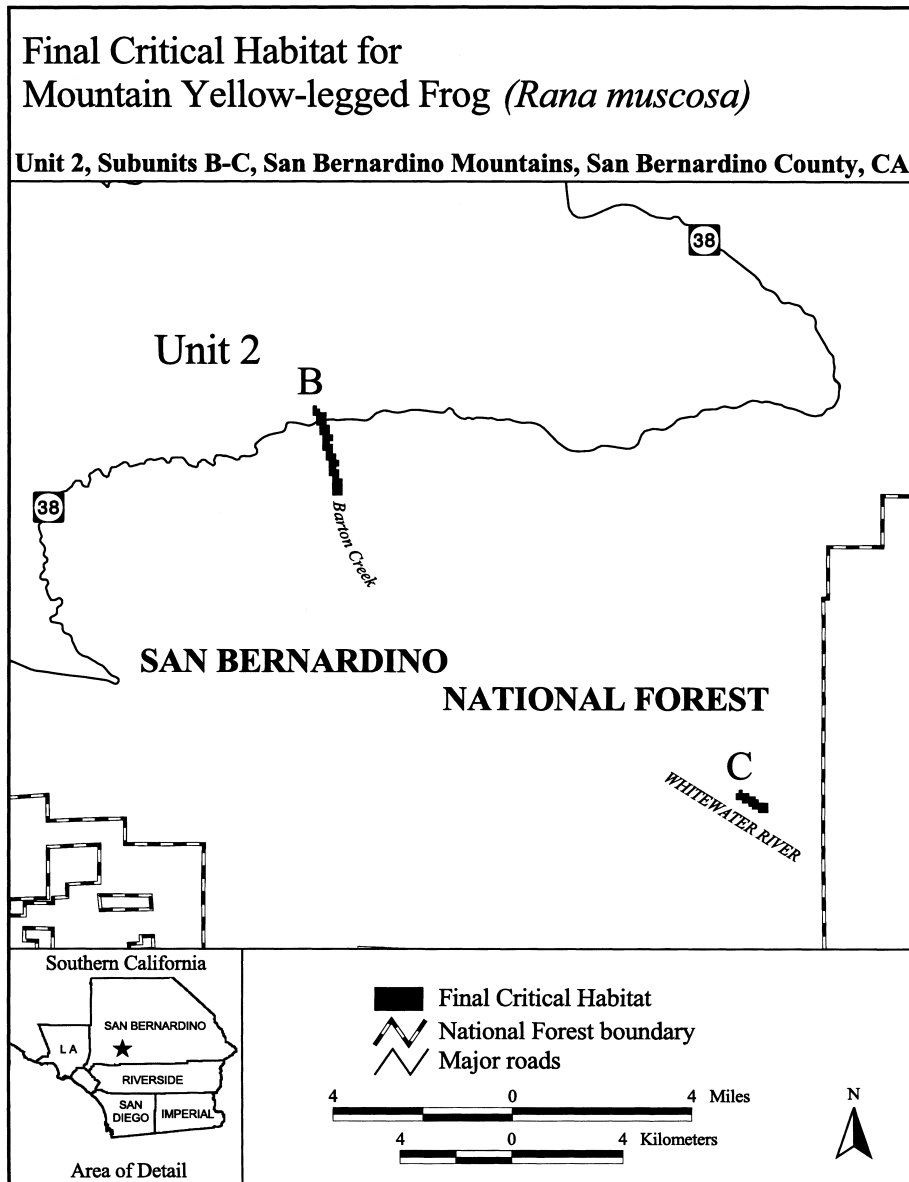
(iii) Subunit 2C: Whitewater River, North Fork, San Bernardino National Forest, San Bernardino County, California.

(A) Land bounded by the following UTM NAD27 coordinates (E, N): 523300, 3769200;

**50 CFR Ch. I (10–1–06 Edition)**

523400, 3769200; 523400, 3769100; 523600, 3769100;  
523600, 3769000; 523800, 3769000; 523800, 3768900;  
523900, 3768900; 523900, 3768800; 524200, 3768800;  
524200, 3768500; 523900, 3768500; 523900, 3768600;  
523700, 3768600; 523700, 3768700; 523600, 3768700;  
523600, 3768800; 523400, 3768800; 523400, 3768900;  
523200, 3768900; 523200, 3769100; 523300, 3769100;  
returning to 523300, 3769200.

(B) Map of subunits 2B and 2C (Map 5) follows:



(7) Unit 3: San Jacinto Mountains, San Bernardino National Forest, Riverside County, California. From USGS 1:24,000 quadrangle maps Lake Fulmor, Palm Springs and San Jacinto Peak, California

(i) Subunit 3A: San Jacinto River, North Fork, San Bernardino National Forest, Riverside County, California.

(A) Land bounded by the following UTM NAD27 coordinates (E, N): 526400, 3743000; 526600, 3743000; 526600, 3742700; 526400, 3742700; 526400, 3742600; 526300, 3742600; 526300, 3742500;

§ 17.95, Note

50 CFR Ch. I (10–1–06 Edition)

526200, 3742500; 526200, 3742400; 526600, 3742400; 526600, 3742300; 526900, 3742200; 527000, 3742200; 527000, 3742000; 526800, 3742000; 526800, 3742100; 526300, 3742100; 526300, 3742200; 526100, 3742200; 526100, 3742800; 526200, 3742800; 526200, 3742900; 526400, 3742900; returning to 526400, 3743000; land bounded by: 525000, 3742100; 525200, 3742100; 525200, 3742000; 525400, 3742000; 525400, 3741900; 525300, 3741900; 525300, 3741800; 525100, 3741800; 525100, 3741700; 525000, 3741700; 525000, 3741600; 524900, 3741600; 524900, 3741800; 524800, 3741800; 524800, 3741900; 524900, 3741900; 524900, 3742000; 525000, 3742000; returning to 525000, 3742100; land bounded by: 522600, 3741900; 522800, 3741900; 522800, 3741800; 522900, 3741800; 522900, 3741600; 522800, 3741600; 522800, 3741400; 522600, 3741400; 522600, 3741300; 522500, 3741300; 522500, 3741200; 522400, 3741200; 522400, 3741100; 522300, 3741100; 522300, 3740700; 522200, 3740700; 522200, 3740500; 522100, 3740500; 522100, 3740000; 522000, 3740000; 522000, 3739500; 521900, 3739500; 521900, 3739200; 521800, 3739200; 521800, 3739000; 522000, 3739000; 522000, 3739100; 522600, 3739100; 522600, 3739200; 523000, 3739200; 523000, 3739300; 523100, 3739300; 523100, 3739400; 523200, 3739400; 523200, 3739000; 522900, 3739000; 522900, 3738900; 522600, 3738900; 522600, 3738800; 521800, 3738800; 521800, 3738700; 521700, 3738700; 521700, 3738600; 521400, 3738600; 521400, 3738800; 521500, 3738800; 521500, 3738900; 521600, 3738900; 521600, 3739500; 521700, 3739500; 521700, 3739700; 521800, 3739700; 521800, 3740300; 521900, 3740300; 521900, 3740700; 522000, 3740700; 522000, 3740900; 522100, 3740900; 522100, 3741300; 522200, 3741300; 522200, 3741400; 522400, 3741400; 522400, 3741600; 522600, 3741600; returning to 522600, 3741900; land bounded by: 525800, 3741200; 525900, 3741200; 525900, 3740900; 525800, 3740800; 525600, 3740800; 525600, 3740700; 525500, 3740600; 525400, 3740600; 525400, 3740400; 525300, 3740400; 525300, 3740300; 525200, 3740300; 525200, 3740200; 525100, 3740200; 525100, 3740100; 525000, 3740100; 525000, 3740000; 525600, 3740000; 525600, 3740100; 525800, 3740100; 525800, 3740000; 525900, 3740000; 525900, 3739700; 525800, 3739700; 525800, 3739800; 525500, 3739700; 525700, 3739700; 525700, 3739600; 525800, 3739600; 525800, 3739500; 525900, 3739500; 525900, 3739400; 526000, 3739400; 526000, 3739000; 525900, 3739000; 525900, 3739100; 525800, 3739200; 525700, 3739200; 525700, 3739300; 525600, 3739300; 525600, 3739400; 525100, 3739400; 525100, 3739500; 524800, 3739500; 524800, 3739600; 524600, 3739600; 524600, 3739500; 524500, 3739500; 524500, 3739400; 524200, 3739400; 524200, 3739300; 524100, 3739300; 524100, 3739600; 524200, 3739600; 524200, 3739700; 524400, 3739700; 524400, 3739800; 524500, 3739800; 524500, 3740000; 524600, 3740000; 524600, 3740100; 524700, 3740100; 524700, 3740200; 524800, 3740200; 524800, 3740300; 524900, 3740300; 524900, 3740400; 525000, 3740400; 525000, 3740500; 525100, 3740500; 525100, 3740600; 525200, 3740600; 525200, 3740700; 525300, 3740700; 525300, 3740800; 525400, 3740800; 525400, 3740900; 525500, 3740900; 525500, 3741000; 525600, 3741000; 525600, 3741100; 525800, 3741100; returning to 525800, 3741200; and land bounded by 523900, 3741000; 524200, 3741000; 524200,

3740800; 524100, 3740800; 524100, 3740700; 524000, 3740700; 524000, 3740600; 523900, 3740600; 523900, 3740500; 523800, 3740500; 523800, 3740400; 523600, 3740400; 523600, 3740300; 523500, 3740300; 523500, 3740100; 523400, 3740100; 523400, 3739500; 523200, 3739500; 523200, 3739600; 523100, 3739600; 523100, 3740000; 523200, 3740000; 523200, 3740300; 523300, 3740300; 523300, 3740500; 523400, 3740500; 523400, 3740600; 523600, 3740600; 523600, 3740700; 523800, 3740700; 523800, 3740900; 523900, 3740900; returning to 523900, 3741000.

(B) Map depicting subunit 3A is located at paragraph (7)(iv)(B) of this entry.

(ii) Subunit 3B: Indian Creek at Hall Canyon, San Bernardino National Forest, Riverside County, California.

(A) Land bounded by the following UTM NAD27 coordinates (E, N): 521600, 3742800; 521800, 3742800; 521800, 3742500; 521700, 3742500; 521700, 3741700; 521600, 3741700; 521600, 3741500; 521500, 3741500; 521500, 3741400; 521400, 3741400; 521400, 3741200; 521300, 3741200; 521300, 3741100; 520900, 3741100; 520900, 3741200; 521000, 3741200; 521000, 3741300; 521100, 3741300; 521100, 3741400; 521200, 3741400; 521200, 3741600; 521300, 3741600; 521300, 3741700; 521400, 3741700; 521400, 3742300; 521500, 3742300; 521500, 3742700; 521600, 3742700; returning to 521600, 3742800.

(B) Map depicting subunit 3B is located at paragraph (7)(iv)(B) of this entry.

(iii) Subunit 3C: Tahquitz Creek, San Bernardino National Forest, Riverside County, California.

(A) Land bounded by the following UTM NAD27 coordinates (E, N): 529600, 3739000; 529900, 3739000; 529900, 3738900; 531000, 3738900; 531000, 3738800; 531100, 3738800; 531100, 3738700; 531200, 3738700; 531200, 3738600; 531300, 3738600; 531300, 3738500; 531400, 3738500; 531400, 3738400; 531500, 3738400; 531500, 3738200; 531200, 3738200; 531200, 3738300; 531100, 3738300; 531100, 3738400; 531000, 3738400; 531000, 3738500; 530900, 3738500; 530900, 3738600; 530200, 3738600; 530200, 3738700; 529600, 3738700; returning to 529600, 3739000; and land bounded by 532100, 3737000; 532400, 3737000; 532400, 3736900; 532600, 3736900; 532600, 3736600; 532300, 3736600; 532300, 3736700; 532200, 3736700; 532200, 3736500; 531800, 3736500; 531800, 3736300; 531700, 3736300; 531700, 3736200; 531600, 3736200; 531600, 3736100; 531500, 3736100; 531500, 3736000; 531400, 3736000; 531400, 3735700; 531300, 3735700; 531300, 3735500; 531200, 3735500; 531200, 3735300; 531100, 3735300; 531100, 3735100; 531000, 3735100; 531000, 3735000; 530900, 3735000; 530900, 3734900; 530600, 3734900; 530600, 3735200; 530800, 3735200; 530800, 3735300; 530900, 3735300; 530900, 3735500; 531000, 3735500; 531000, 3735800; 531100, 3735800; 531100, 3735900; 531200, 3735900; 531200, 3736200; 531300, 3736200; 531300, 3736300; 531400, 3736300; 531400, 3736400; 531500, 3736400; 531500, 3736600; 531600, 3736600; 531600, 3736700; 531700, 3736700; 531700, 3736800; 532000, 3736800; 532000, 3736900; 532100, 3736900; returning to 532100, 3737000.

(B) Map depicting subunit 3C is located at paragraph (7)(iv)(B) of this entry.

**U.S. Fish and Wildlife Serv., Interior**

**§ 17.95, Note**

(iv) Subunit 3D: Andreas Creek, San Bernardino National Forest, Riverside County, California.

(A) Land bounded by the following UTM NAD27 coordinates (E, N): 534300, 3735900; 534700, 3735900; 534700, 3735800; 535000, 3735800; 535000, 3735700; 535100, 3735700; 535100, 3735600; 535300, 3735600; 535300, 3735500; 535400, 3735500; 535400, 3735400; 535500, 3735400; 535500, 3735300;

535700, 3735300; 535700, 3735000; 535500, 3735000; 535500, 3735100; 535300, 3735100; 535300, 3735200; 535200, 3735200; 535200, 3735300; 535100, 3735300; 535100, 3735400; 534900, 3735400; 534900, 3735500; 534800, 3735500; 534800, 3735600; 534300, 3735600; returning to 534300, 3735900.

(B) Map of Unit 3, with Subunits 3A, 3B, 3C, and 3D (Map 6), follows:

### Final Critical Habitat for Mountain Yellow-legged Frog (*Rana muscosa*)

Unit 3, Subunits A-D, San Jacinto Mountains, Riverside County, CA.

