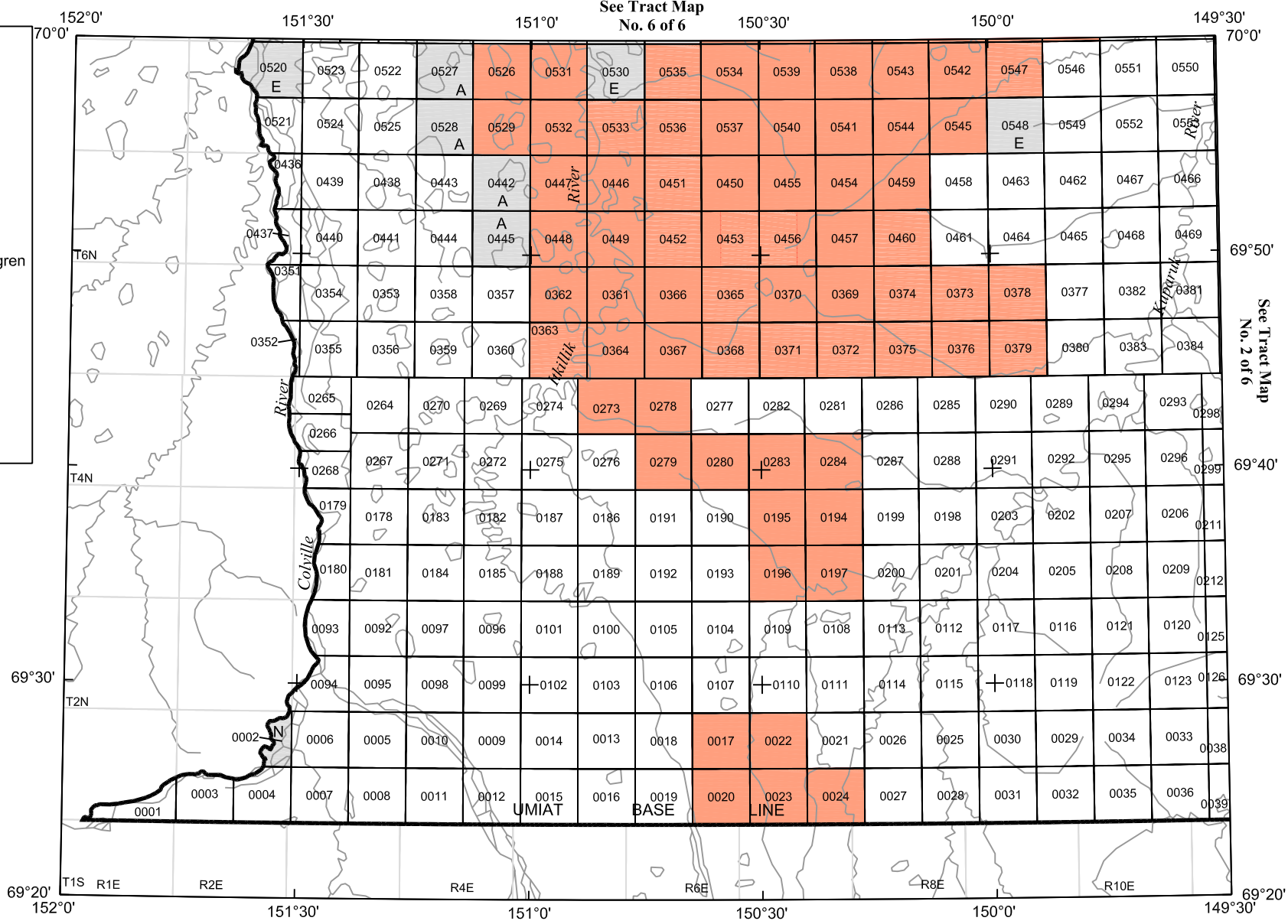


# North Slope Areawide 2000 Tract Map No. 1 of 6

**Apparent High Bidders**

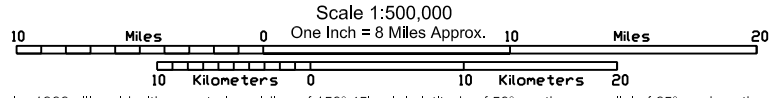
- A = 3793885 Canada Ltd.
- B = AEC Oil & Gas (USA) Inc.
- C = Anadarko Pet. Corp.  
& AEC Oil & Gas
- D = Anadarko Petroleum Corp.
- E = AVCG LLC
- F = BP Exploration (Alaska) Inc.
- G = BP Exploration (Alaska) Inc.  
& Chevron USA
- H = Daniel K. Donkel
- I = J. Andrew Bachner & Keith Forsgren
- J = Monte Allen/Daniel K. Donkel
- K = Phillips AK & BP Exploration
- L = Phillips AK, AEC Oil & Gas,  
Chevron USA
- M = Phillips Alaska, Inc.
- N = R3 Exploration Corporation
- O = Richard Wagner, D. Gilbertson,  
N. Stepovich

A = LEASED



See Tract Map  
 No. 6 of 6

See Tract Map  
 No. 2 of 6



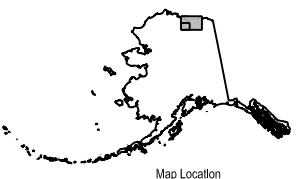
Albers Equal-Area Conic Projection, 1927 North American Datum, Clarke 1866 ellipsoid with a central meridian of 150° 45', origin latitude of 50°, northern parallel of 65°, and southern parallel of 55°.

Director, Division of Oil and Gas Kenneth A. Boyd _____ Date: _____	Leasing Manager James Hansen _____ Date: _____
--	---

**—** Sale Boundary

State Acreage

Currently Leased State Acreage (As of July 10, 2000)

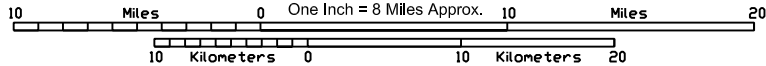
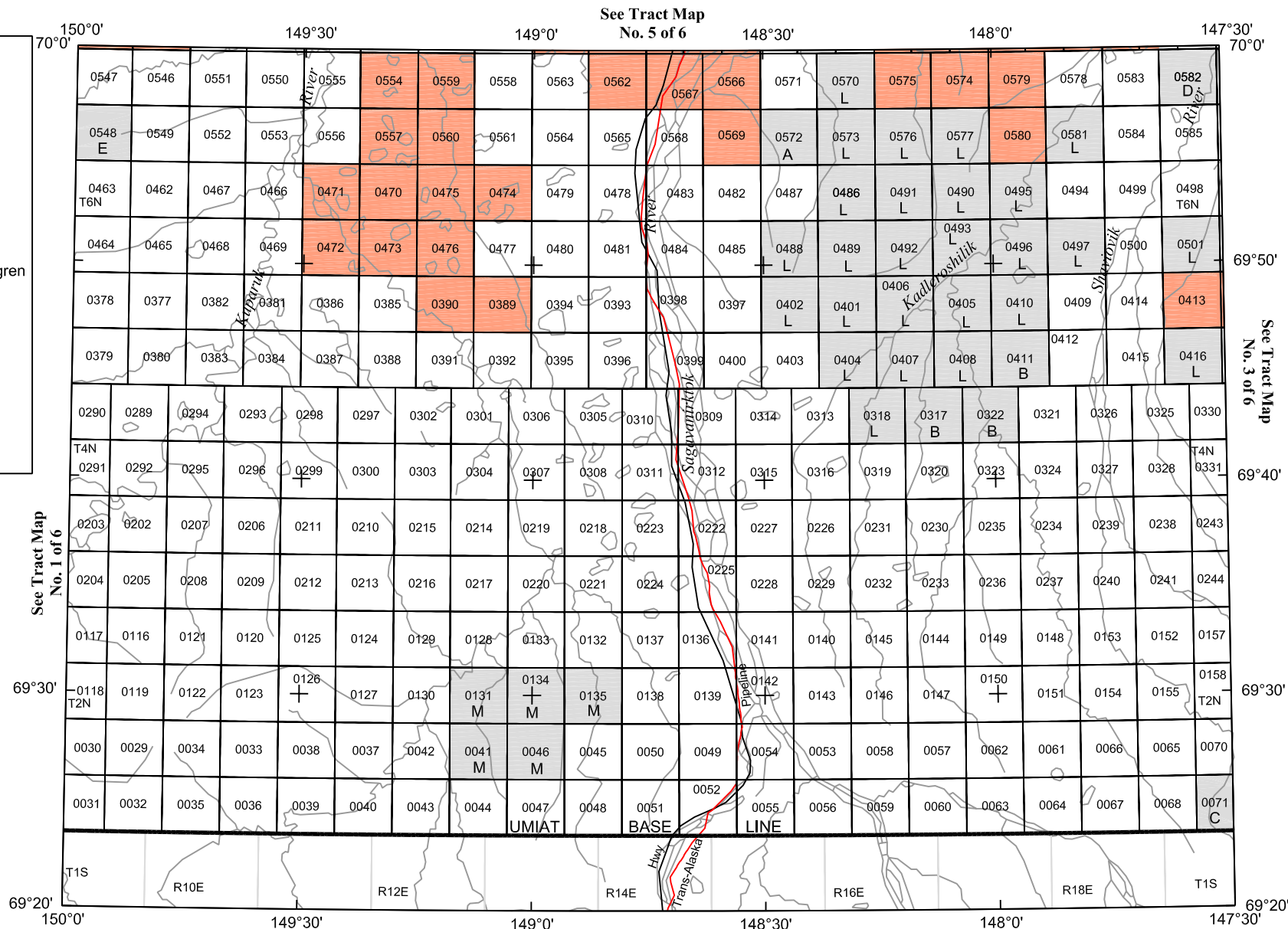


# North Slope Areawide 2000 Tract Map No. 2 of 6

**Apparent High Bidders**

- A = 3793885 Canada Ltd.
- B = AEC Oil & Gas (USA) Inc.
- C = Anadarko Pet. Corp.  
& AEC Oil & Gas
- D = Anadarko Petroleum Corp.
- E = AVCG LLC
- F = BP Exploration (Alaska) Inc.
- G = BP Exploration (Alaska) Inc.  
& Chevron USA
- H = Daniel K. Donkel
- I = J. Andrew Bachner & Keith Forsgren
- J = Monte Allen/Daniel K. Donkel
- K = Phillips AK & BP Exploration
- L = Phillips AK, AEC Oil & Gas,  
Chevron USA
- M = Phillips Alaska, Inc.
- N = R3 Exploration Corporation
- O = Richard Wagner, D. Gilbertson,  
N. Stepovich

A = LEASED



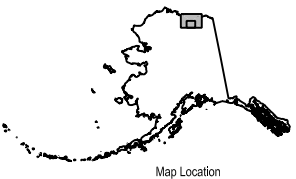
Albers Equal-Area Conic Projection, 1927 North American Datum, Clarke 1866 ellipsoid with a central meridian of 148° 45', origin latitude of 50°, northern parallel of 65°, and southern parallel of 55°.

Director, Division of Oil and Gas Kenneth A. Boyd _____ Date: _____	Leasing Manager James Hansen _____ Date: _____
--	---

**—** Sale Boundary

State Acreage

Currently Leased State Acreage (As of July 10, 2000)

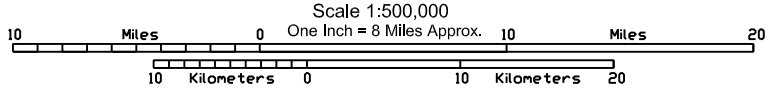
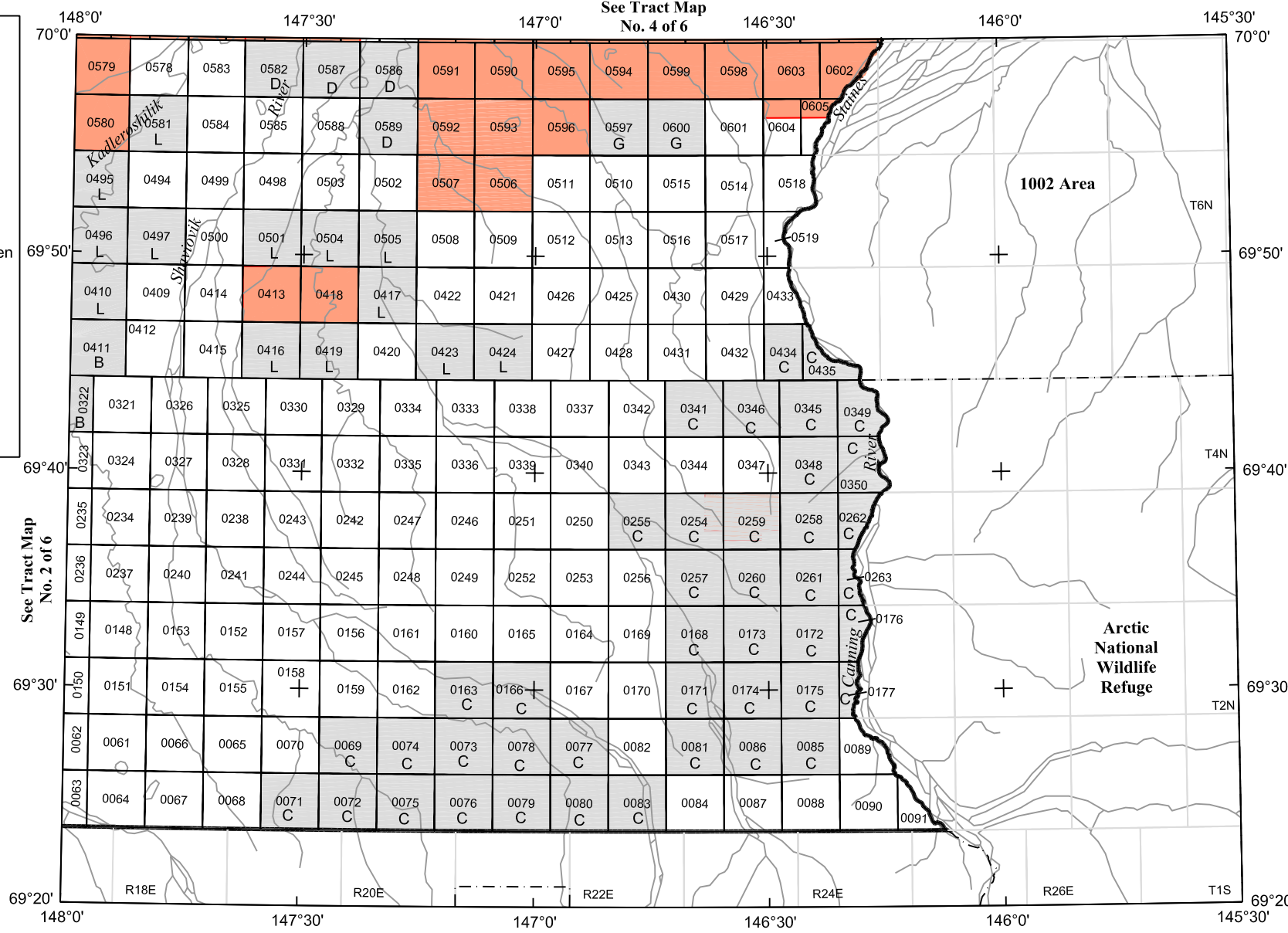


# North Slope Areawide 2000 Tract Map No. 3 of 6

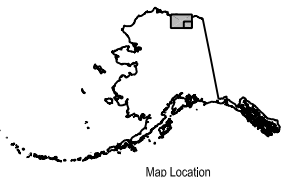
**Apparent High Bidders**

- A = 3793885 Canada Ltd.
- B = AEC Oil & Gas (USA) Inc.
- C = Anadarko Pet. Corp.  
& AEC Oil & Gas
- D = Anadarko Petroleum Corp.
- E = AVCG LLC
- F = BP Exploration (Alaska) Inc.
- G = BP Exploration (Alaska) Inc.  
& Chevron USA
- H = Daniel K. Donkel
- I = J. Andrew Bachner & Keith Forsgren
- J = Monte Allen/Daniel K. Donkel
- K = Phillips AK & BP Exploration
- L = Phillips AK, AEC Oil & Gas,  
Chevron USA
- M = Phillips Alaska, Inc.
- N = R3 Exploration Corporation
- O = Richard Wagner, D. Gilbertson,  
N. Stepovich

A = LEASED



Albers Equal-Area Conic Projection, 1927 North American Datum, Clarke 1866 ellipsoid with a central meridian of 146° 45', origin latitude of 50°, northern parallel of 65°, and southern parallel of 55°.



Director, Division of Oil and Gas Kenneth A. Boyd _____ Date: _____	Leasing Manager James Hansen _____ Date: _____
--	---

**—** Sale Boundary

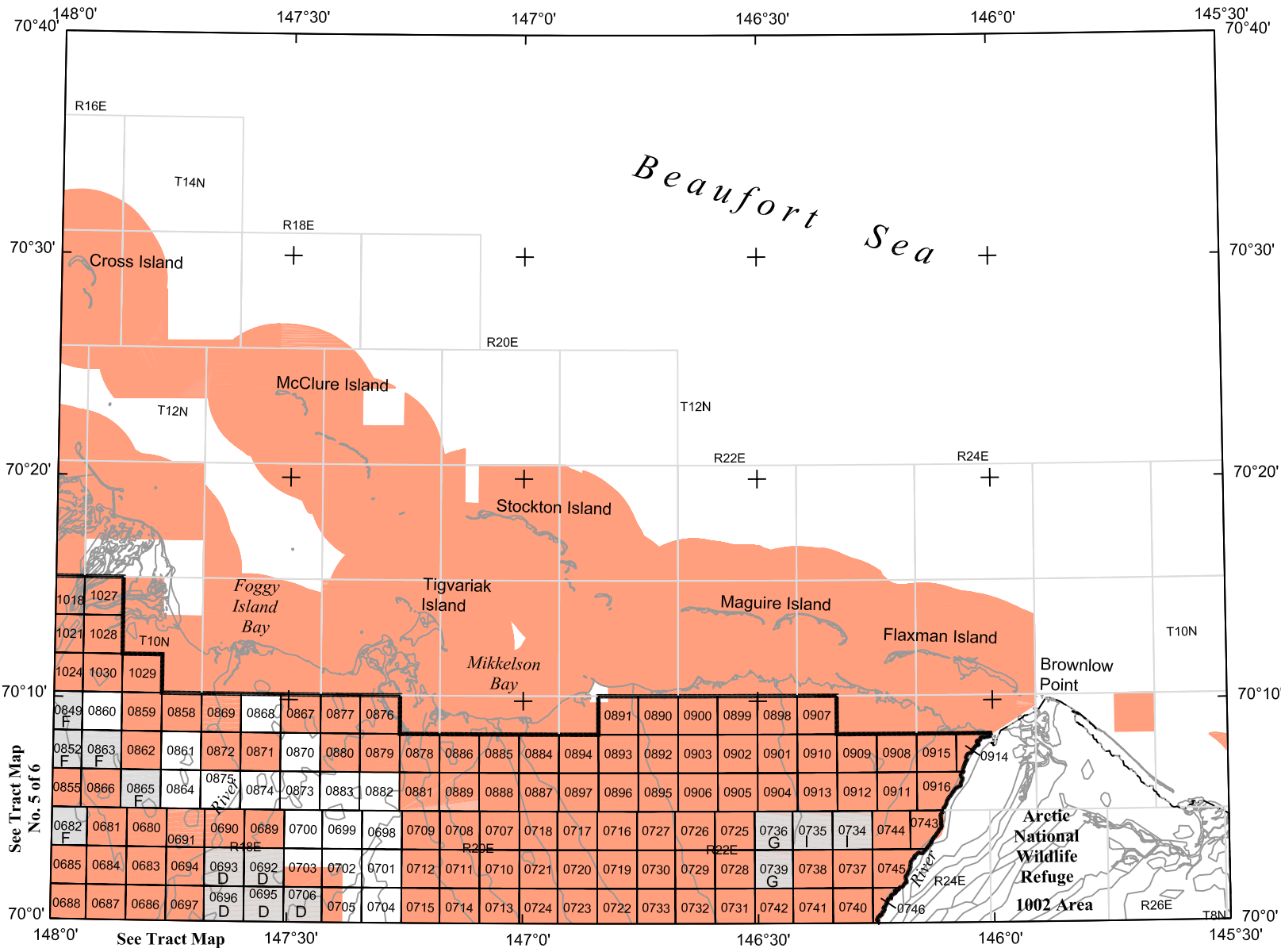
Currently Leased State Acreage (As of July 10, 2000)

# North Slope Areawide 2000 Tract Map No. 4 of 6

**Apparent High Bidders**

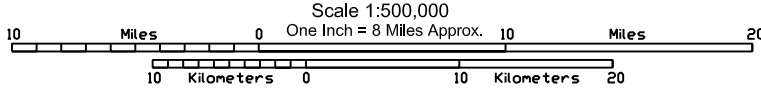
- A = 3793885 Canada Ltd.
- B = AEC Oil & Gas (USA) Inc.
- C = Anadarko Pet. Corp.  
& AEC Oil & Gas
- D = Anadarko Petroleum Corp.
- E = AVCG LLC
- F = BP Exploration (Alaska) Inc.
- G = BP Exploration (Alaska) Inc.  
& Chevron USA
- H = Daniel K. Donkel
- I = J. Andrew Bachner & Keith Forsgren
- J = Monte Allen/Daniel K. Donkel
- K = Phillips AK & BP Exploration
- L = Phillips AK, AEC Oil & Gas,  
Chevron USA
- M = Phillips Alaska, Inc.
- N = R3 Exploration Corporation
- O = Richard Wagner, D. Gilbertson,  
N. Stepovich

A = LEASED



See Tract Map No. 5 of 6

See Tract Map No. 3 of 6

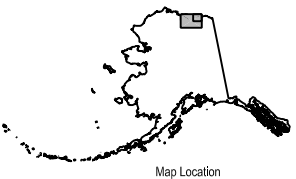


Albers Equal-Area Conic Projection, 1927 North American Datum, Clarke 1866 ellipsoid with a central meridian of 146° 45', origin latitude of 50°, northern parallel of 65°, and southern parallel of 55°.

Sale Boundary

State Acreage

Currently Leased State Acreage (As of July 10, 2000)

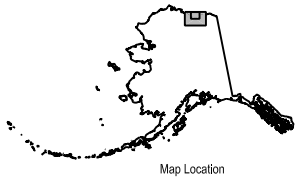
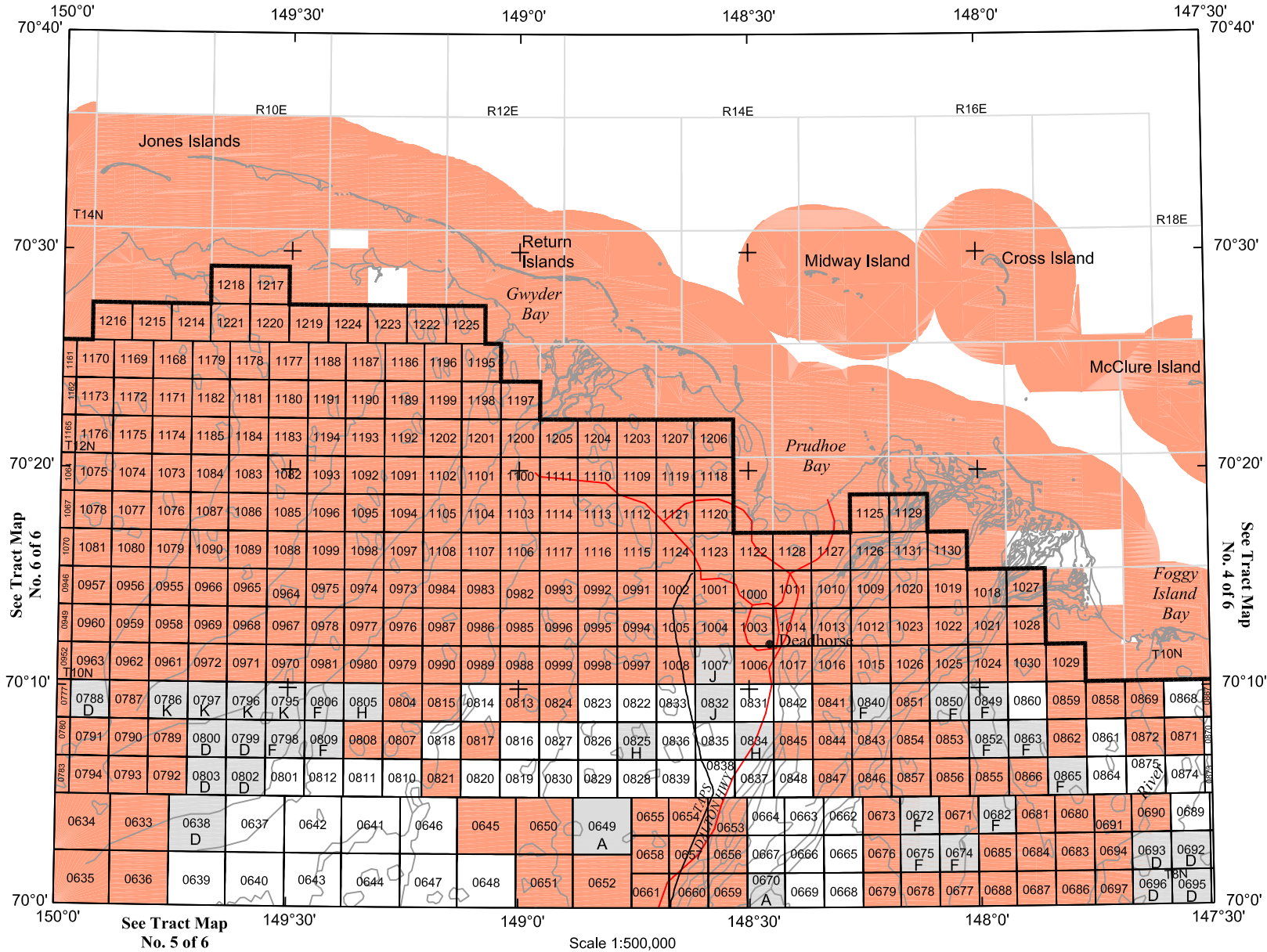


Director, Division of Oil and Gas Kenneth A. Boyd _____ Date: _____	Leasing Manager James Hansen _____ Date: _____
--	---

This Is Not An Official Tract Map. For Informational Purposes Only.

# North Slope Areawide 2000 Tract Map No. 5 of 6

- Apparent High Bidders**
- A = 3793885 Canada Ltd.
  - B = AEC Oil & Gas (USA) Inc.
  - C = Anadarko Pet. Corp.  
& AEC Oil & Gas
  - D = Anadarko Petroleum Corp.
  - E = AVCG LLC
  - F = BP Exploration (Alaska) Inc.
  - G = BP Exploration (Alaska) Inc.  
& Chevron USA
  - H = Daniel K. Donkel
  - I = J. Andrew Bachner & Keith Forsgren
  - J = Monte Allen/Daniel K. Donkel
  - K = Phillips AK & BP Exploration
  - L = Phillips AK, AEC Oil & Gas,  
Chevron USA
  - M = Phillips Alaska, Inc.
  - N = R3 Exploration Corporation
  - O = Richard Wagner, D. Gilbertson,  
N. Stepovich
- A = LEASED



Albers Equal-Area Conic Projection, 1927 North American Datum, Clarke 1866 ellipsoid with a central meridian of 148° 45', origin latitude of 50°, northern parallel of 65°, and southern parallel of 55°.

Director, Division of Oil and Gas Kenneth A. Boyd _____ Date: _____	Leasing Manager James Hansen _____ Date: _____
--	---

This Is Not An Official Tract Map. For Informational Purposes Only.

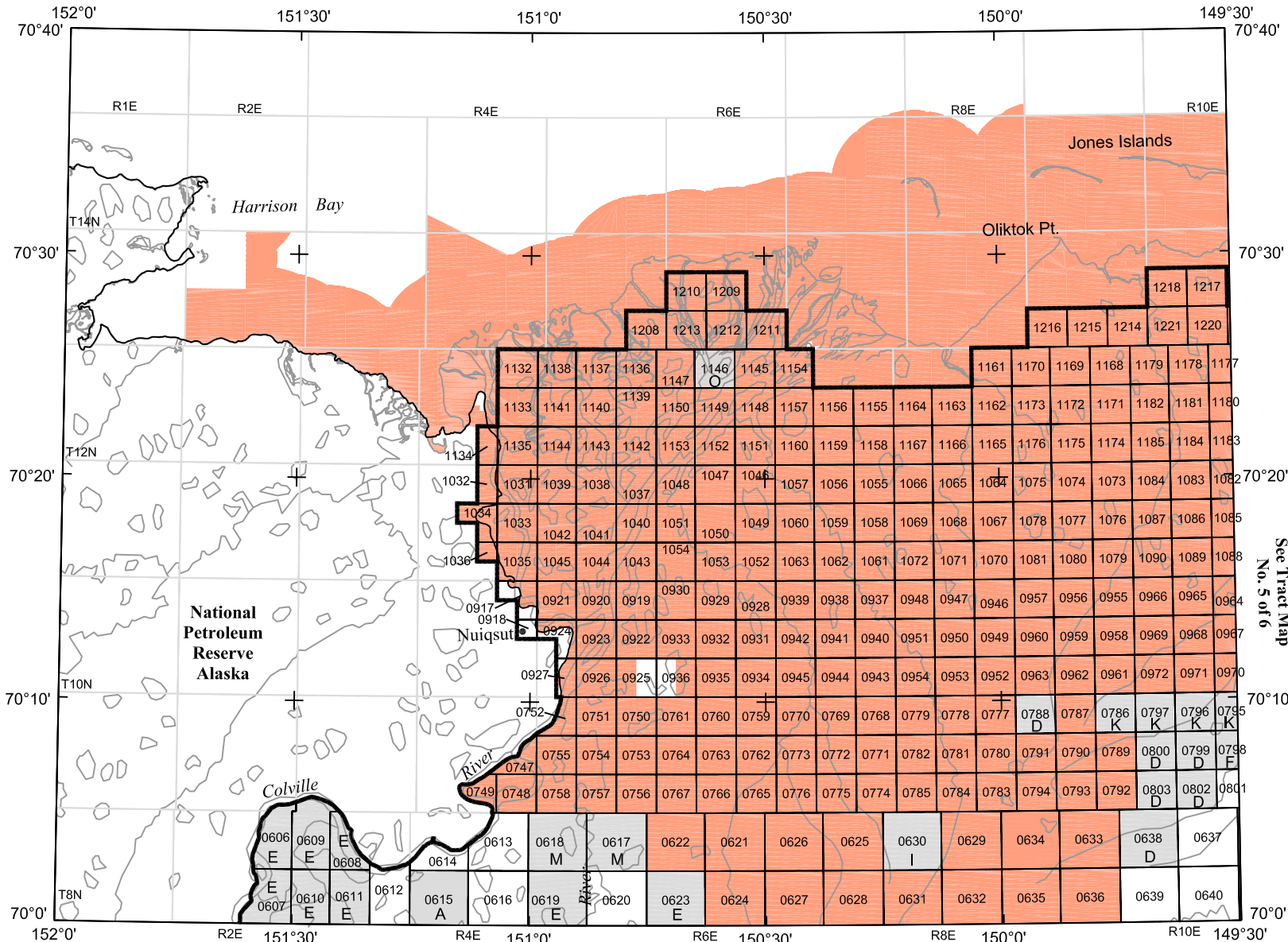
- Sale Boundary
- State Acreage
- Currently Leased State Acreage (As of July 10, 2000)

# North Slope Areawide 2000 Tract Map No. 6 of 6

**Apparent High Bidders**

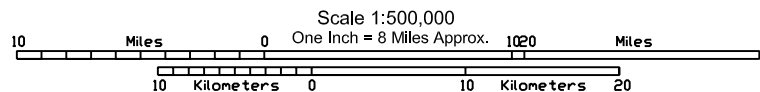
- A = 3793885 Canada Ltd.
- B = AEC Oil & Gas (USA) Inc.
- C = Anadarko Pet. Corp.  
& AEC Oil & Gas
- D = Anadarko Petroleum Corp.
- E = AVCG LLC
- F = BP Exploration (Alaska) Inc.
- G = BP Exploration (Alaska) Inc.  
& Chevron USA
- H = Daniel K. Donkel
- I = J. Andrew Bachner & Keith Forsgren
- J = Monte Allen/Daniel K. Donkel
- K = Phillips AK & BP Exploration
- L = Phillips AK, AEC Oil & Gas,  
Chevron USA
- M = Phillips Alaska, Inc.
- N = R3 Exploration Corporation
- O = Richard Wagner, D. Gilbertson,  
N. Stepovich

A = LEASED



See Tract Map No. 5 of 6

See Tract Map No. 1 of 6



Albers Equal-Area Conic Projection, 1927 North American Datum, Clarke 1866 ellipsoid with a central meridian of 150° 45', origin latitude of 50°, northern parallel of 65°, and southern parallel of 55°.

Director, Division of Oil and Gas Kenneth A. Boyd _____ Date: _____	Leasing Manager James Hansen _____ Date: _____
--	---

**Sale Boundary**

State Acreage

Currently Leased State Acreage (As of July 10, 2000)

