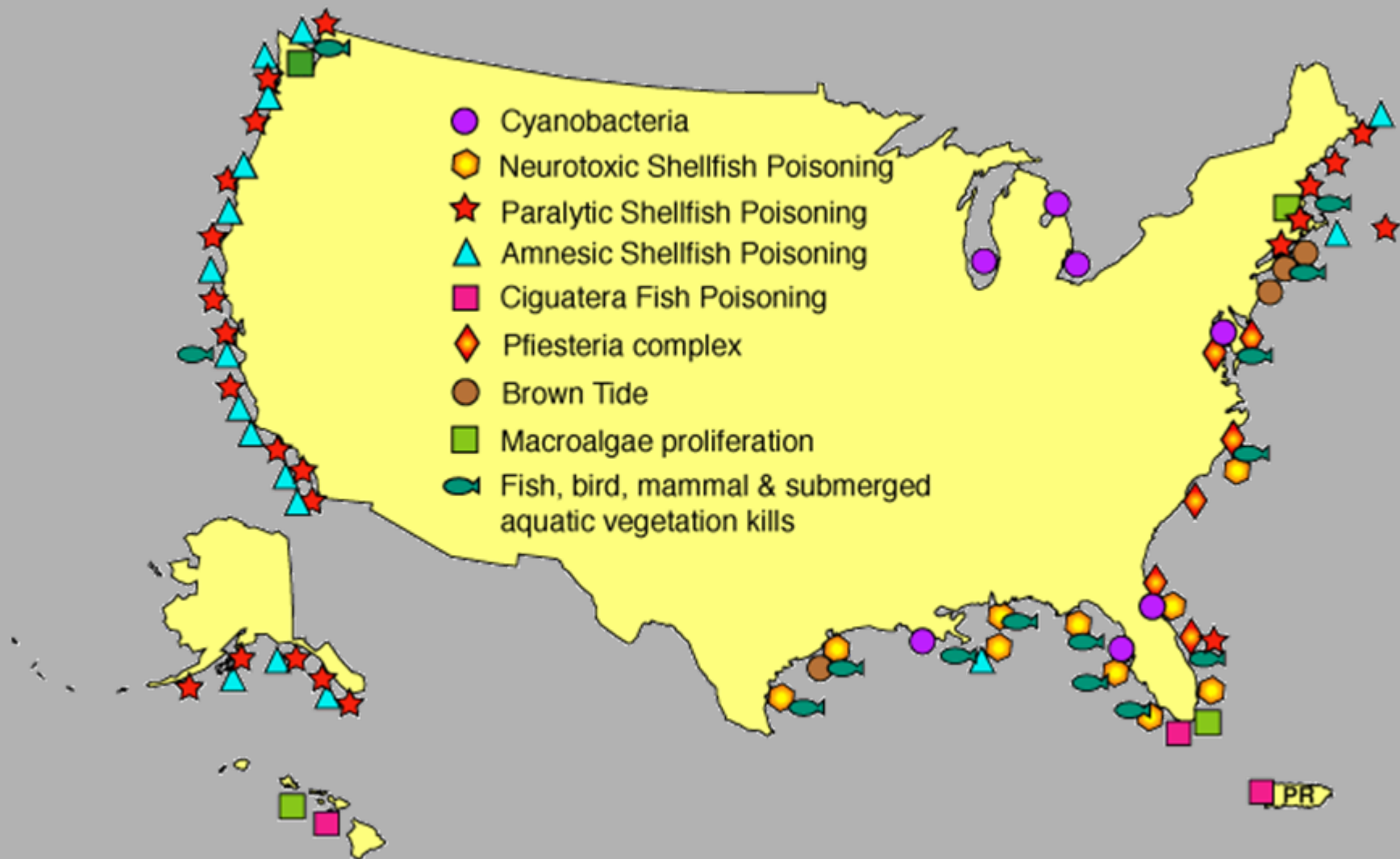


Major HAB-related Events in the Coastal U.S.



Source: WHOI / NOAA



The Pacific Razor Clam (*Siliqua patula*)



2005.03.06



RESTAURANT
CLAM DIGGERS BUFFET
SUNDAY 8 - 12
OPEN FOR BREAKFAST

OFFICE
←
NO VACANCY



FAST CLAMS, LOW TIDES AND BOTTOM LINES



Businesses in coastal communities use revenue from winter clam digs to bridge the gap between summer seasons. Whether a beach opens for clamming or not can make or break these coastal towns.

BY JEFFREY P. MAYOR
The News Tribune



Businesses in coastal communities use revenue from winter clam digs to bridge the gap between summer seasons. Whether a beach opens for clamming or not can make or break these coastal towns.

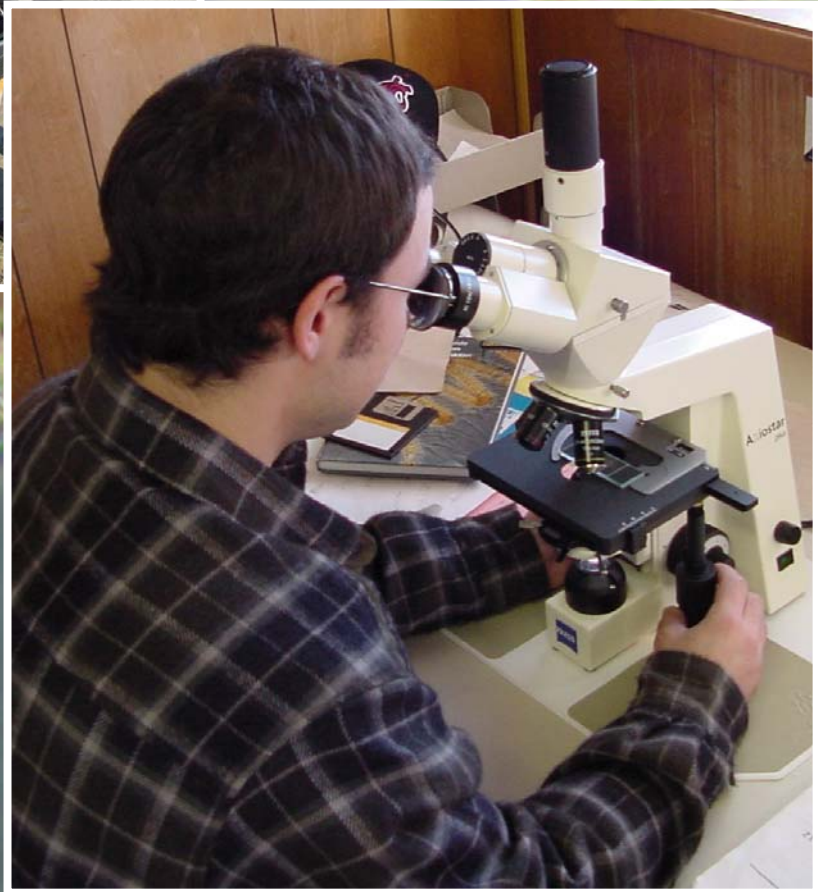
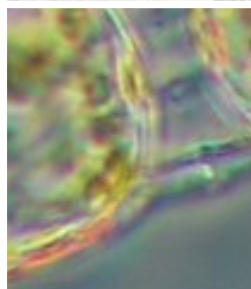
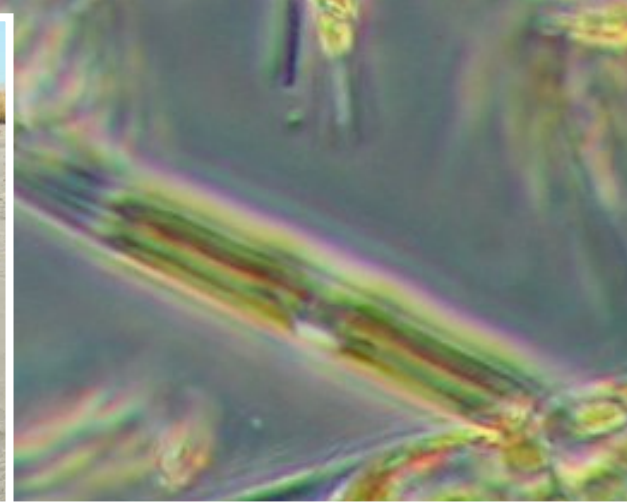
BY JEFFREY P. MAYOR
The News Tribune

ured the family spent \$400 during their two-night stay in the coastal town of Long Beach.
"We cooked up the clams we got yesterday and that involved a trip to the grocery store," said LaVeta Scherer.
"That was \$35 right there," her husband quickly chimed in.
The money the Scherers spent is part of the estimated \$10 million the state's razor-clam diggers infuse



2005.03.06





END
OF
COUNTY
ROAD

THIS
BEACH
CLOSED TO
RAZOR CLAM

Clam opener canceled due to high toxin count

OLYMPIA — The first razor clam dig of the fall season has been postponed due to elevated levels of marine toxins on Washington's

Beaches affected by the health closure include Long Beach, Twin Harbors, Copalis, Mocrocks and Kalaloch.

...CY
...
...O EAT.
...AN
...SURE
...
...DEPARTMENT OF
...HEALTH.

Unhappy
clammers
question
closure



Businesses feel pinch of closings

weekend until the news down digging at Twin
it's possible

It's enough to make
you very crabby

algae can cause death

Domoic acid is produced by
of algae "that





