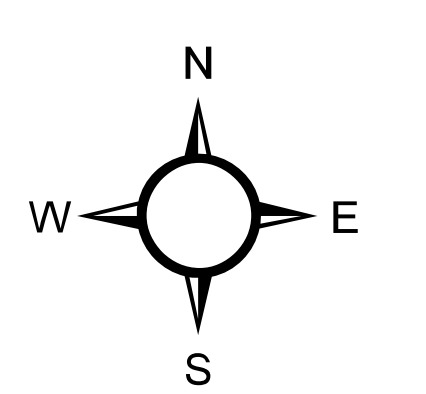
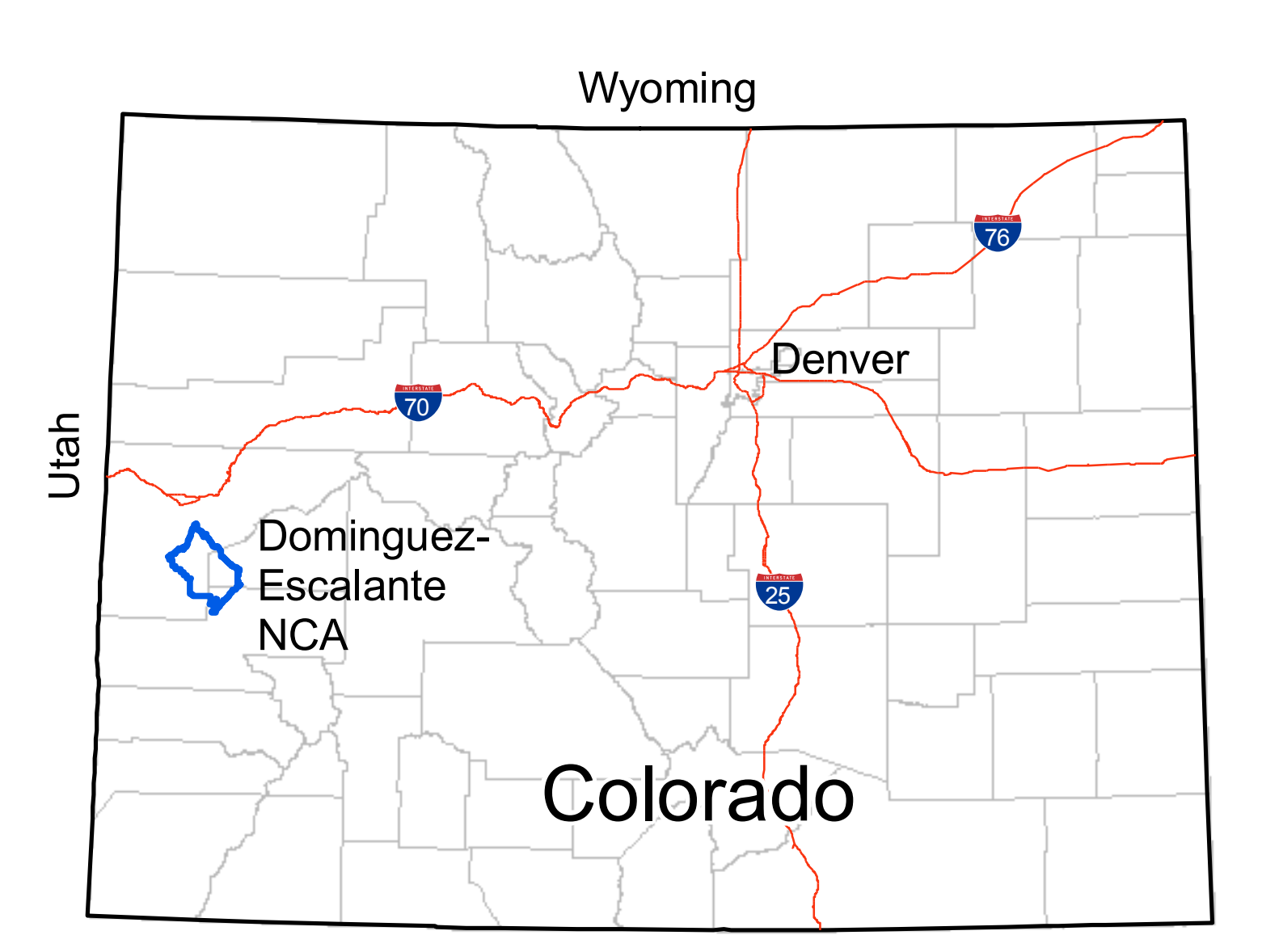
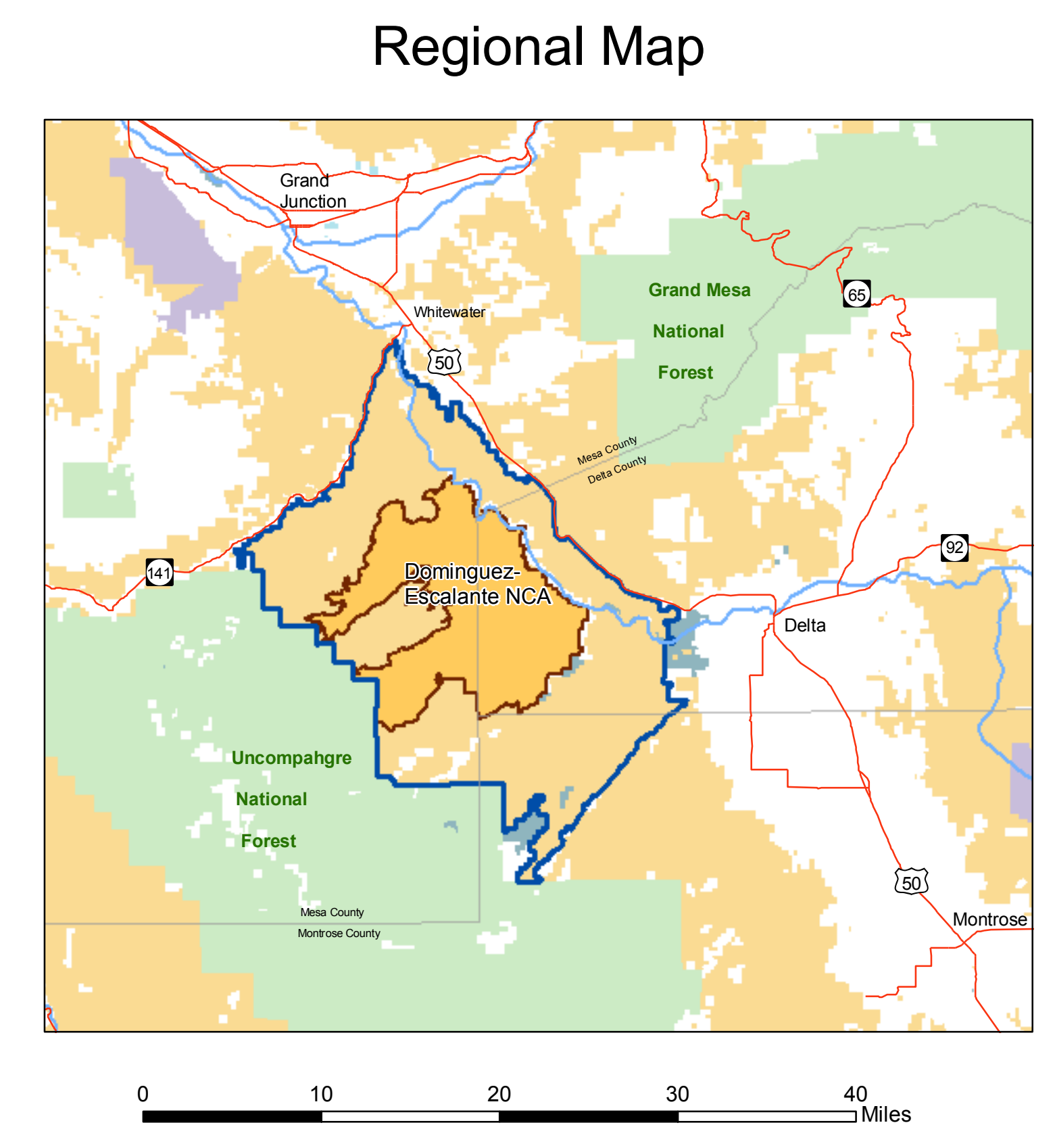
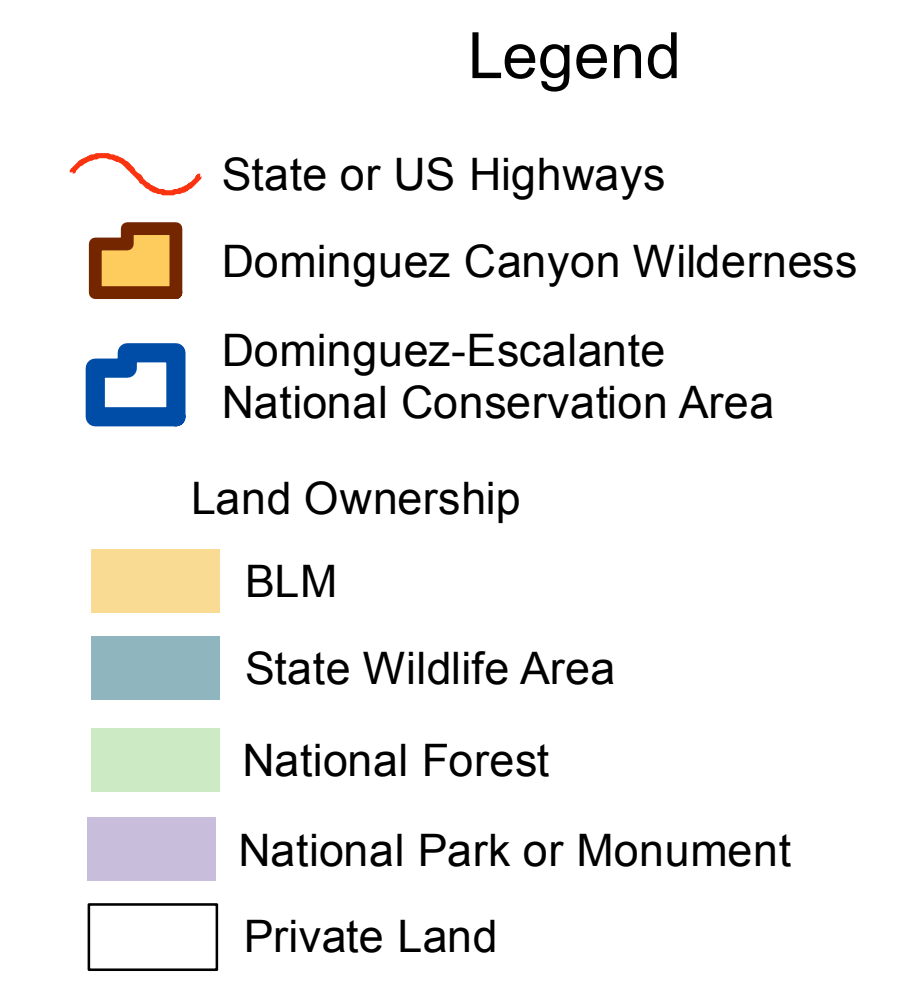
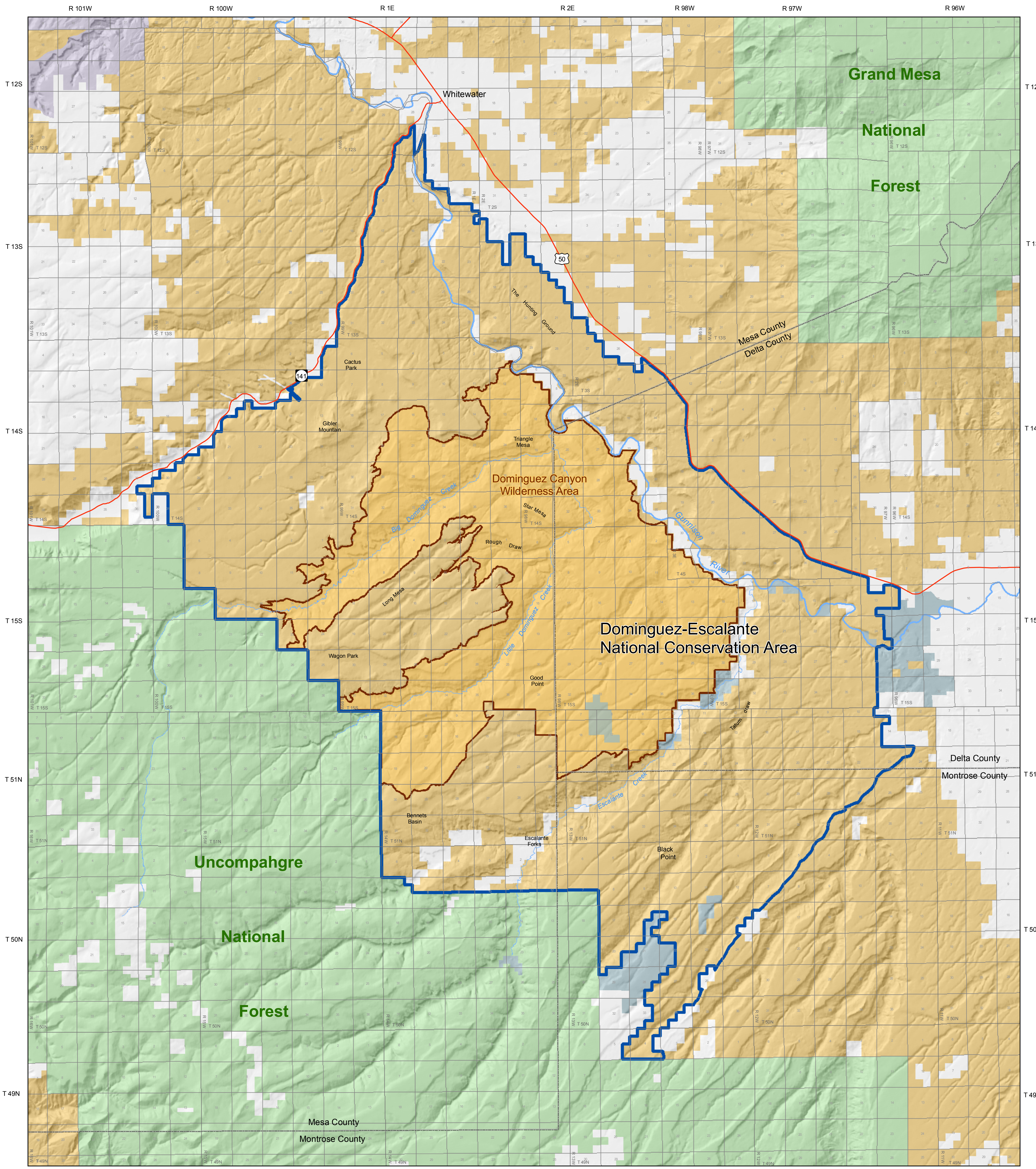


# Dominguez-Escalante National Conservation Area

May 22, 2008

This map was prepared at the request of Senator Ken Salazar



0 2 4 6 8 10 Miles

1:80,000

This map is intended to be plotted at 34x44

This map was produced by the BLM Grand Junction Field Office, May 22, 2008 l:\giswork\projectdominguez/escalante/congressional\_maps\map\_for\_salazar\_5\_22\_08.mxd