

03451690 NEWFOUND CREEK NEAR ALEXANDER, NC

LOCATION.--Lat 35°39'59", long 82°38'04", Buncombe County, Hydrologic Unit 06010105, on left bank 21 ft downstream from bridge on Secondary Road 1641, 0.9 mi above mouth, and 2.6 mi southwest of Alexander.

DRAINAGE AREA.--34.2 mi².

PERIOD OF RECORD.--December 2000 to October 2005 (discontinued).

GAGE.--Water-stage recorder. Elevation of gage is 1,910 ft above NGVD of 1929, from topographic map. Satellite telemetry at station.

REMARKS.--Records good except those for estimated daily discharges, which are fair. Maximum discharge for period of record from rating curve extended above 1,600 ft³/s on basis of slope-area measurement of peak flow. Maximum gage height for period of record from high-water marks at gage. Minimum discharge for the current water also occurred several days in Sept.

DISCHARGE, CUBIC FEET PER SECOND
WATER YEAR OCTOBER 2004 TO SEPTEMBER 2005
DAILY MEAN VALUES

DAY	OCT	NOV	DEC	JAN	FEB	MAR	APR	MAY	JUN	JUL	AUG	SEP
1	43	22	33	23	20	35	37	25	23	28	23	22
2	38	22	27	22	19	30	54	24	32	26	22	21
3	35	26	26	22	23	28	41	23	29	25	21	20
4	32	77	25	22	21	27	35	23	26	24	24	19
5	30	38	24	22	20	26	32	23	22	23	24	18
6	28	31	26	22	20	24	30	23	21	26	24	18
7	27	29	28	21	19	24	31	22	21	224	40	18
8	26	27	25	22	20	33	34	22	20	65	e50	17
9	26	26	77	21	20	26	30	22	20	41	35	17
10	25	25	49	21	20	25	27	32	21	34	31	16
11	25	24	41	20	19	24	26	25	21	35	25	17
12	25	55	34	20	19	24	29	22	31	34	23	16
13	27	37	31	34	20	23	48	22	50	31	47	16
14	24	31	28	81	22	23	99	22	28	31	34	16
15	24	29	27	32	20	22	52	24	24	28	24	16
16	23	28	26	29	20	24	42	22	21	26	29	e20
17	22	27	26	26	19	30	37	21	20	26	28	18
18	22	26	25	e25	18	25	34	21	46	41	e137	17
19	42	26	25	24	18	24	32	21	63	156	e65	16
20	27	25	25	24	20	23	30	39	128	106	44	16
21	24	25	e25	23	92	23	29	25	56	56	35	16
22	23	24	24	23	46	24	32	23	38	43	30	16
23	23	28	40	e22	34	69	35	22	31	34	29	16
24	24	157	28	e22	35	33	30	21	27	29	26	15
25	22	66	26	21	30	29	27	21	25	27	24	15
26	22	43	25	22	27	27	27	20	24	25	22	18
27	22	36	24	20	26	33	27	20	27	24	22	17
28	22	34	23	19	43	181	25	21	98	25	22	16
29	27	29	23	21	---	63	26	20	49	31	22	16
30	24	28	23	22	---	47	27	20	32	25	49	16
31	22	---	23	21	---	40	---	19	---	24	26	---
TOTAL	826	1,101	912	769	730	1,089	1,065	710	1,074	1,373	1,057	515
MEAN	26.6	36.7	29.4	24.8	26.1	35.1	35.5	22.9	35.8	44.3	34.1	17.2
MAX	43	157	77	81	92	181	99	39	128	224	137	22
MIN	22	22	23	19	18	22	25	19	20	23	21	15
CFSM	0.78	1.07	0.86	0.73	0.76	1.03	1.04	0.67	1.05	1.30	1.00	0.50
IN.	0.90	1.20	0.99	0.84	0.79	1.18	1.16	0.77	1.17	1.49	1.15	0.56

STATISTICS OF MONTHLY MEAN DATA FOR WATER YEARS 2001 - 2005, BY WATER YEAR (WY)

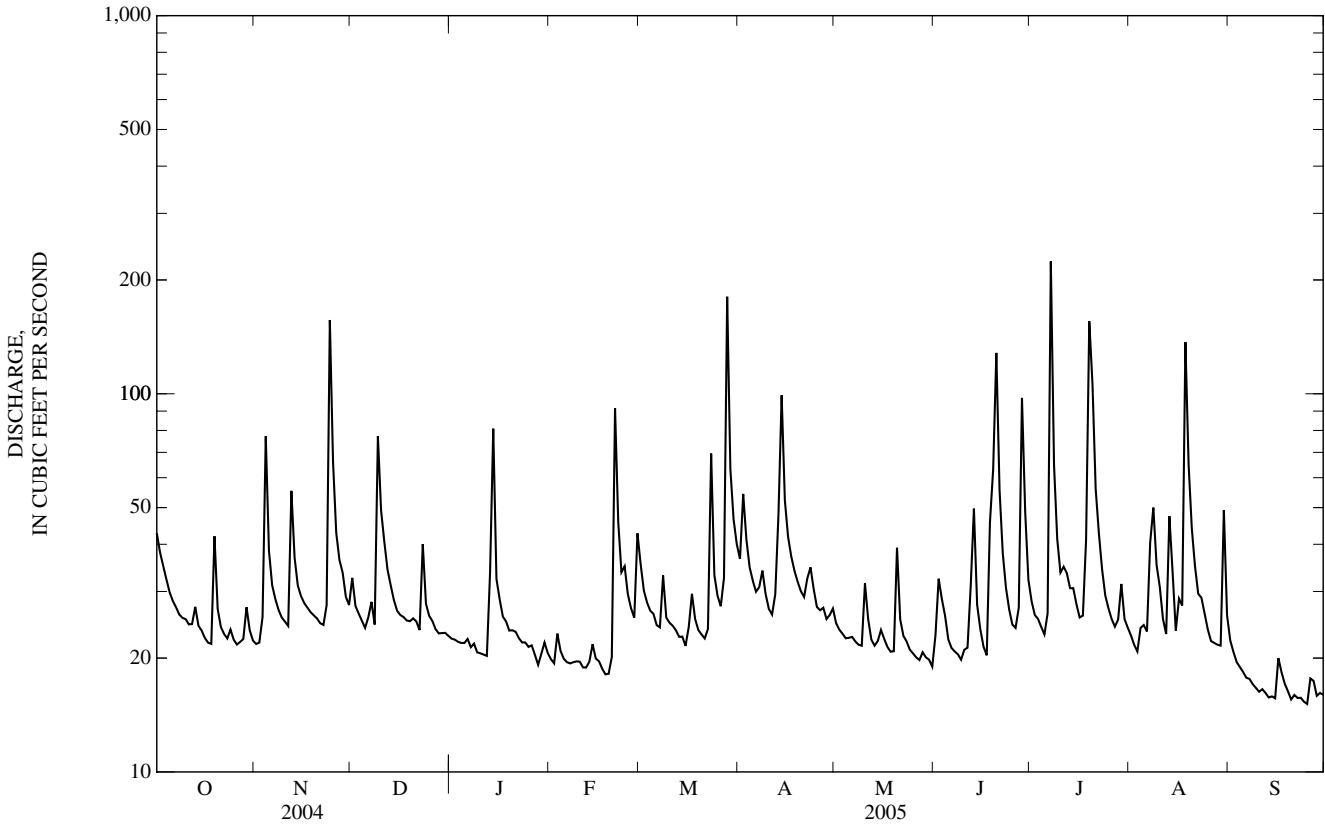
	2001	2002	2003	2004	2005
MEAN	13.3	20.1	18.9	17.4	22.8
MAX	26.6	36.7	29.4	24.8	32.4
(WY)	(2005)	(2005)	(2005)	(2005)	(2004)
MIN	6.49	6.39	8.60	14.8	9.30
(WY)	(2002)	(2002)	(2002)	(2001)	(2002)
	24.9	26.1	25.7	19.6	20.1
	40.7	35.8	44.3	34.1	157
	(2003)	(2003)	(2003)	(2005)	(2005)
	12.0	8.46	7.87	6.89	3.38
	(2002)	(2001)	(2001)	(2001)	(2002)
	15.7	12.0	8.46	7.87	6.44
	(2002)	(2002)	(2001)	(2001)	(2002)

03451690 NEWFOUND CREEK NEAR ALEXANDER, NC—Continued

SUMMARY STATISTICS	FOR 2004 CALENDAR YEAR		FOR 2005 WATER YEAR		WATER YEARS 2001 - 2005	
ANNUAL TOTAL	12,826		11,221		24.7	
ANNUAL MEAN	35.0		30.7		9.50	
HIGHEST ANNUAL MEAN					32.1	2004
LOWEST ANNUAL MEAN					9.50	2002
HIGHEST DAILY MEAN	2,690	Sep 17	224	Jul 7	2,690	Sep 17, 2004
LOWEST DAILY MEAN	11	Aug 28	15	Sep 24	1.8	Aug 14, 2002
ANNUAL SEVEN-DAY MINIMUM	12	Aug 26	16	Sep 19	2.1	Aug 8, 2002
MAXIMUM PEAK FLOW			658	Jul 19	17,000*	Sep 17, 2004
MAXIMUM PEAK STAGE			5.51	Jul 19	20.60*	Sep 17, 2004
INSTANTANEOUS LOW FLOW			14*	Sep 10	1.2	Aug 23, 2002
ANNUAL RUNOFF (CFSM)	1.02		0.899		0.722	
ANNUAL RUNOFF (INCHES)	13.95		12.21		9.81	
10 PERCENT EXCEEDS	42		43		35	
50 PERCENT EXCEEDS	21		25		18	
90 PERCENT EXCEEDS	14		20		6.4	

* See REMARKS.

e Estimated.



03451690 NEWFOUND CREEK NEAR ALEXANDER, NC—Continued

DISCHARGE, CUBIC FEET PER SECOND
WATER YEAR OCTOBER 2005 TO SEPTEMBER 2006
DAILY MEAN VALUES

DAY	OCT	NOV	DEC	JAN	FEB	MAR	APR	MAY	JUN	JUL	AUG	SEP
1	15	---	---	---	---	---	---	---	---	---	---	---
2	15	---	---	---	---	---	---	---	---	---	---	---
3	15	---	---	---	---	---	---	---	---	---	---	---
4	14	---	---	---	---	---	---	---	---	---	---	---
5	14	---	---	---	---	---	---	---	---	---	---	---
6	24	---	---	---	---	---	---	---	---	---	---	---
7	20	---	---	---	---	---	---	---	---	---	---	---
8	20	---	---	---	---	---	---	---	---	---	---	---
9	17	---	---	---	---	---	---	---	---	---	---	---
10	16	---	---	---	---	---	---	---	---	---	---	---
11	16	---	---	---	---	---	---	---	---	---	---	---
12	15	---	---	---	---	---	---	---	---	---	---	---
13	15	---	---	---	---	---	---	---	---	---	---	---
14	15	---	---	---	---	---	---	---	---	---	---	---
15	15	---	---	---	---	---	---	---	---	---	---	---
16	14	---	---	---	---	---	---	---	---	---	---	---
17	14	---	---	---	---	---	---	---	---	---	---	---
18	14	---	---	---	---	---	---	---	---	---	---	---
19	e14	---	---	---	---	---	---	---	---	---	---	---
20	14	---	---	---	---	---	---	---	---	---	---	---
21	14	---	---	---	---	---	---	---	---	---	---	---
22	14	---	---	---	---	---	---	---	---	---	---	---
23	14	---	---	---	---	---	---	---	---	---	---	---
24	14	---	---	---	---	---	---	---	---	---	---	---
25	14	---	---	---	---	---	---	---	---	---	---	---
26	14	---	---	---	---	---	---	---	---	---	---	---
27	14	---	---	---	---	---	---	---	---	---	---	---
28	e14	---	---	---	---	---	---	---	---	---	---	---
29	e14	---	---	---	---	---	---	---	---	---	---	---
30	e14	---	---	---	---	---	---	---	---	---	---	---
31	e14	---	---	---	---	---	---	---	---	---	---	---
TOTAL	470	---	---	---	---	---	---	---	---	---	---	---
MEAN	15.2	---	---	---	---	---	---	---	---	---	---	---
MAX	24	---	---	---	---	---	---	---	---	---	---	---
MIN	14	---	---	---	---	---	---	---	---	---	---	---
CFSM	0.44	---	---	---	---	---	---	---	---	---	---	---
IN.	0.51	---	---	---	---	---	---	---	---	---	---	---

SUMMARY STATISTICS

FOR 2006 WATER YEAR

MAXIMUM PEAK FLOW	43	Oct 6
MAXIMUM PEAK STAGE	2.72	Oct 6
INSTANTANEOUS LOW FLOW	13	Oct 15

e Estimated.

