

Monadnock Region Upgrades

Swanzey ♦ Keene line upgrade



Overview

Today, essential paths on the New England transmission grid are congested and the system is at or near capacity due to the increased growth in the region. PSNH is committed to upgrading those congested areas most in need of additional energy capacity in order to ensure power to the region, especially during times of high demand.

The Swanzey/Keene Energy Project is only one of many infrastructure investments that PSNH continues to make to meet regional demand.

Purpose

The Swanzey/Keene Energy Project is an upgrade to PSNH's network of power lines that will provide additional supply of power to this area of New Hampshire.

This project will facilitate the transfer of more power through the region and assist in assuring the availability of sufficient energy during high demand times.

Locations & Components

This project will rebuild one existing 115,000 volt line between PSNH's Swanzey substation in Swanzey and the Emerald Street substation in Keene, which includes approximately 4.5 miles of transmission line.

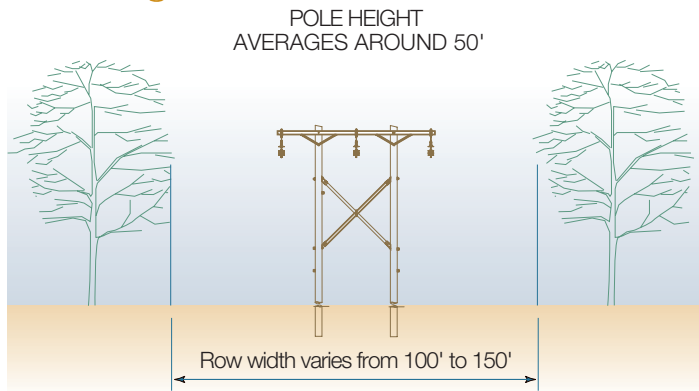
Other upgrades as part of this project include better power line switching capability at the Swanzey substation and upgraded system communications.

Preparing Today for NH's Tomorrow

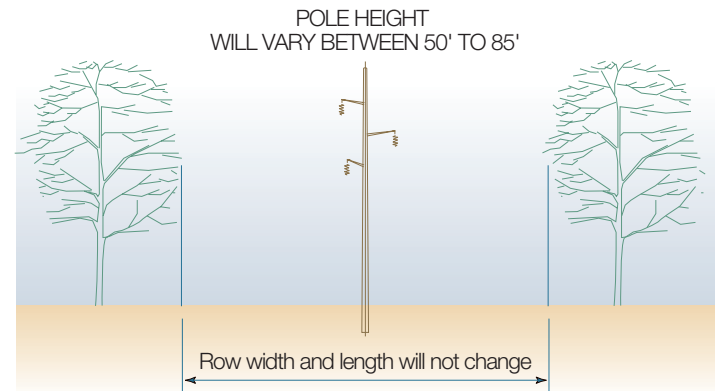
Facts

Energy Corridor

Existing



Planned



The new structures will be of wood-laminate construction. Their height will average about 50 to 85 feet above ground, slightly below surrounding tree height. The existing right-of-way will not be changed, however, because the corridor will be trimmed and cleared as necessary in order to meet electrical clearances for safety and reliability, in many locations it will appear to be wider.

Facts

Structures

The replacement poles will range in height from 50 to 85 feet tall, and will be primarily single-pole, laminated-wood structures (rather than the current "H" frame construction); however, some areas will still require the "H" frame construction.

Corridor Width

The width and length of the existing power line corridor will not change; however, the corridor will be trimmed as needed to the edge of the easement boundary in order to meet electrical clearances for safety and reliability. In some locations it may appear to be wider.

Communities Along Corridor

Swansey, Keene

Estimated Project Cost
is \$4.5 million

Line construction approximately \$3.73 million

Historical and environmental preservation
approximately \$770,000

Timeline

Construction is scheduled to begin in the second quarter of 2008. The upgraded line, will be energized and in use by the end of 2008.

Early 2008	◆ Right-of-way clearing and trimming
	◆ Permitting and materials procurement
Mid 2008	◆ Line construction begins
Late 2008	◆ Line is energized
Late 2008 & Early 2009	◆ Old line is removed and partially recycled

Contact us

For more information:

Sue Blothenburg 603-357-7309 ext. 5115
Western/Central Division Community Relations Manager

Eric Frazer 603-634-2527, Project Manager