



REGISTRATION NUMBER

DVH 0191

DATE OF REGISTRATION/PUBLICATION

Month 03 Day 01 Year 04

DO NOT WRITE ABOVE THIS LINE. IF YOU NEED MORE SPACE, USE A SEPARATE CONTINUATION SHEET. (Form D-VH/CON)

1
TITLE

Please give the make and model of the vessel that embodies the design.

SEA RAY 182 BOW RIDER/OPENED BOW/SPORT BOAT

2
DESIGN

(a) What is the type or style of the design for which registration is sought?

SPORT BOAT HULL, COCKPIT, AND DECK CONFIGURATION

(b) Provide a brief general statement setting forth the salient features of the design.

~~SEATING ARRANGEMENTS~~ HULL DESIGN, AND DECK DESIGN
DELETED AND AMENDED, 11/25/04 DAD.
- AND INTEGRALLY FORMED CONSOLES. DAD

Check here if this is a single design.
 Check here if registering more than one design. Use Form D-VH/CON for additional designs.

(c) If this design is derived from an earlier design, describe how that design has been revised, adapted, or rearranged.

NEW MODEL, IMPROVED AND REVISED FEATURES, ADDED DESIGNS AND UNIQUE STYLING.

3
DESIGNER(S)

Provide the name and address of the designer(s). The name of the employer may be given instead of the designer(s) if, (1) the design was made within the regular scope of employment of the designer(s) and (2) the individual authorship of the design is difficult or impossible to ascribe.

Please check here if those conditions are satisfied and you are providing the employer's name.

SEA RAY BOATS

Name: A DIVISION OF BRUNSWICK CORPORATION

Address: 2600 SEA RAY BOULEVARD

KNOXVILLE, TN 37914

4
OWNER, IF NOT DESIGNER(S)

If the owner is different from the designer(s) or employer named above, provide the name and address of the owner:

Name: N/A

Address:

5
PRIORITY CLAIM

(a) Was an application for registration of this design identified in an application filed in a foreign country that extends to designs of owners who are citizens of the United States, or to persons filing applications in the United States, similar protection to that afforded in 17 U.S.C. chapter 13?

Yes No

(b) If yes, identify the country and date of application:

Country:

Date of application:

Serial No:

NOV 26 2003

6
DATE MADE PUBLIC

Was this design made public before the date of application? Yes No

If yes, on what date? NOVEMBER 29, 2001

Month Day Year

DO NOT WRITE HERE OFFICE USE ONLY

APPLICATION RECEIVED SEP 22 2003

DESIGN COPIES RECEIVED SEP 22 2003

FUNDS RECEIVED SEP 22 2003

MORE ON BACK

• Complete all applicable spaces (numbers 7 -9) on the reverse side of this page.
• See detailed instructions. • Sign the form at section 9.

DO NOT WRITE HERE
Page 1 of pages

182 Bow Rider

2003

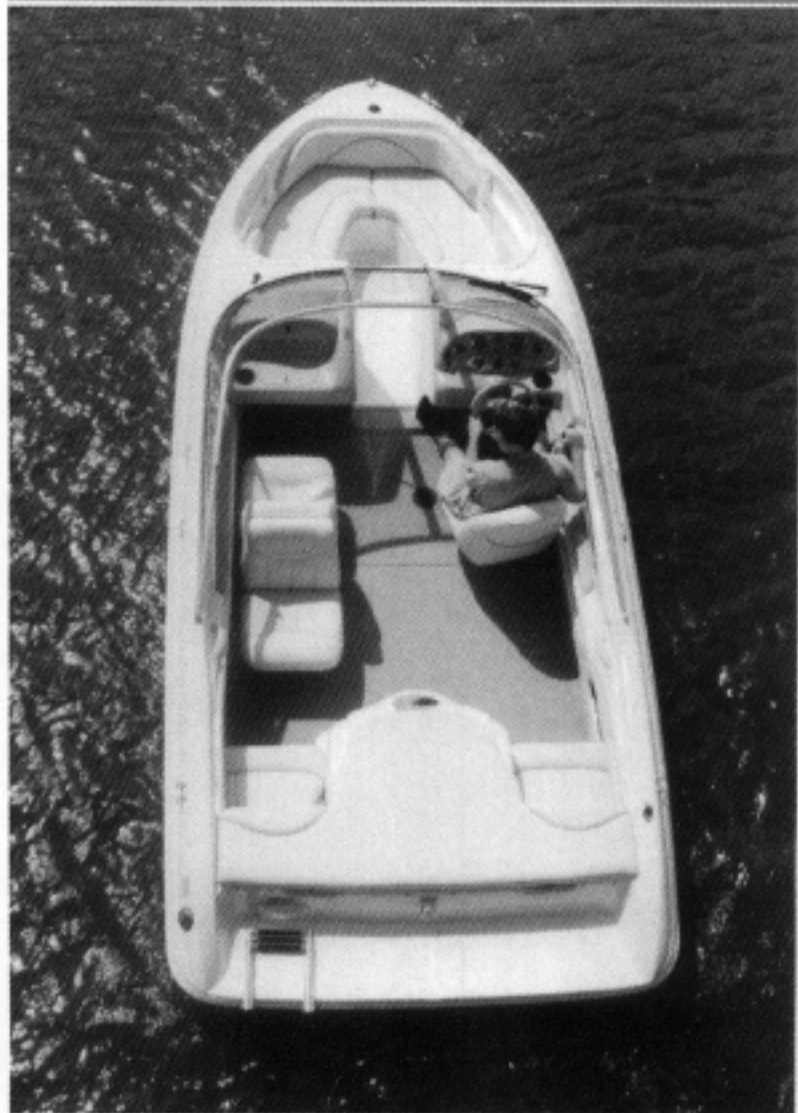
**FEATURES**

- Standard bucket seats with sun pad.
- Sun pad with large stamped Sea Ray logo.
- Standard 3.0L 135 php Alpha I MerCruiser® stern drive.
- Optional 4.3L 190 php Alpha I MerCruiser® stern drive.
- Clarion® CD player standard.
- New silver graphite dash panel.
- Trailer with swing-away tongue and brakes.

SEA RAY SPORT BOATS 2003**182 BOW RIDER**

Overall length	18' 6"	5.64 m
Beam	7' 6"	2.29 m
Draft		
(Stern drive down)	36"	91.4 cm
(Stern drive up)	18"	45.7 cm
Dry weight	2,650 lbs	1,202 kg
Fuel capacity	26 gal	98.4 L
Dead rise	19°	19°
Max persons/weight	7/1,100 lbs	499 kg
(MWC) Max weight persons/gear	1,200 lbs	544.3 kg





182 Bow Rider

2003

Features and Standard Equipment

HULL & DECK FEATURES

Bow & Stern Eyes, Stainless Steel
Cleats, Thru-Bolted - Stainless Steel (6)
Drain Plug, Brass-Threaded - Garboard
Gel-Coat, Pearl
Graphics Package (Platinum)
Hardware, Stainless Steel
Light, Stern - Removable
Lights, Navigation - Stainless Steel
Resin, High-Performance Vinylster
Rub Rail, PVC w/Color-Coordinated Vinyl Insert
Shrink Wrap, Reusable Cover
Ski Tow Eye, Stainless Steel
Storage, Anchor w/Hatch
Swim Platform, Integral
w/Stainless Steel Three-Step Swim Ladder &
Grab Handle
Vent System, Engine Compartment - Integral
Windshield, Custom Three-Piece Tempered/Tinted
Curved Glass w/Walk-Thru

Certifications:

Meets Applicable USCG & ABYC Standards
NMMA Certification

COCKPIT FEATURES

Armrests, Integral
Beverage Holders (7)
Carpet, Marine-Grade (Mocha)
Dash w/Visor, Custom Soft-Touch
w/Graphite Accents
Floor/Stringer System, Integral Fiberglass
Glove Box, Lockable - Soft-Touch
Grab Handles
Outlet, 12V Accessory
Seating, Aft Bench w/Fiberglass Storage Base
Seating, Bow Rider
w/Storage Below - Molded Fiberglass
Seating, Bucket (2) - w/Swivels & Rotocast Shells
Stereo, 12V AM/FM Single CD (Clarion*)
w/Waterproof Speakers (2)
Storage, Side Panels
Storage, Ski/Wakeboard w/Injection-Molded Lid
Sun Pad, Aft (Gas-Assisted) w/Storage Below
Vinyl, Marine-Grade - Platinum w/Accent Welt

TECHNICAL

Helm:
Alarms, Engine - Oil & Water (Audible)
Horn
Instrumentation, Custom Sea Ray® Backlit
w/Low-Glare Blue Night Lighting
(Includes: Fuel, Oil Pressure, Speedometer,
Tachometer, Trim, Voltmeter, Water Temperature)
Shift & Throttle Lever w/Trim Switch &
Ignition Cutout Switch
Steering, Power-Assisted
Steering Wheel, Custom-Padded
Switches, Illuminated Weatherproof Rockers
w/ISO Symbols
Tilt & Trim, Power

Electrical Systems:

Battery Tray w/Mount
Fuse Block
Wiring, Color-Coded w/Chafe Protection

Engine Compartment:

Bilge Pump, 12V
Blower, 12V Bilge
Fire Extinguisher Discharge Port
Gel-Coated Engine Compartment
Insulated Engine Compartment

Fuel System:

Fuel Lines, USCG - Type A-1
Fuel Tank w/Anti-Siphon Valve &
Electric Sending Unit

Trailer, Single-Axle - Painted:

Bearing Protection
Brakes, Free-Backing Hydraulic Surge (Single-Axle)
Lights, Waterproof
Safety Chains
Straps, Transom Tie-Down
Tires, Radial
Tongue, Swing-Away
Tongue Jack, Swivel
Winch Stand, Adjustable w/Nylon Strap & Hook

STANDARD PROPULSION

3.0L Alpha I MCM Stern Drive
(135 hp - 101 kW)
Propeller, Aluminum

Options/Accessories

OPTIONAL PROPULSION

Gasoline Stern Drive:

4.3L Alpha I MCM
(190 hp - 142 kW)

OPTIONAL PACKAGES

Optional Seating Plan:

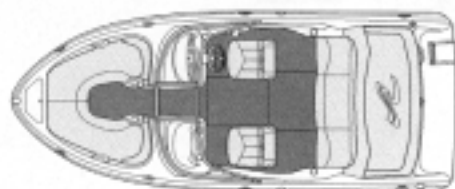
Motorbox, Molded Fiberglass
Seating, Aft Jump Seats - Hi-Lo
w/Fiberglass Base (Forms Sun Pad)
Seating, Back-to-Back Lounger - Port
Seating, Bucket w/Swivel & Rotocast Shell - Helm

Optional Seating Plan:

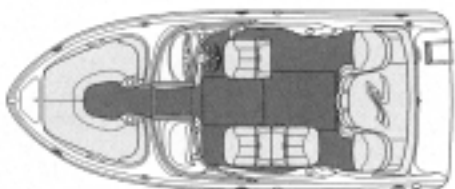
Motorbox, Molded Fiberglass
Seating, Aft Jump Seats - Hi-Lo
w/Fiberglass Base (Forms Sun Pad)
Seating, Back-to-Back Loungers (2)

Canvas Package - Convertible Top:

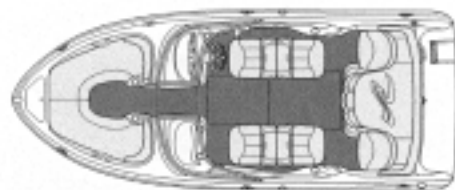
Aft Curtain
Canvas Storage Bag
Cockpit Cover
Convertible Top
Side Curtains
Tonneau Cover
Top Boot



Standard Seating Plan



Optional Seating Plan



Optional Seating Plan

INDIVIDUAL OPTIONS

Canvas, Bimini Top w/Boot & Vertical Storage
Canvas, Black (in lieu of Std. Colors)
Canvas, Cockpit Cover/Tonneau Cover
w/Canvas Storage Bag
Trailer Options
- Galvanized Trailer w/Disc Brakes

CE Option

NOTE: Boats which are ordered with 220V/50 Cycle Electrical Systems will be installed with the appropriate appliances in the corresponding voltage.

Sea Ray Boats, Inc., 2600 Sea Ray Blvd., Knoxville, TN 37914. For information call 1-800-SRBOATS or fax 1-865-213-7878. Internet address: <http://www.searay.com>

Note: Not all accessories shown in pictures or described herein are standard equipment or even available as options. Options and features are subject to change without notice.

Not all model year boats may contain all the features or meet the specifications described herein. Confirm availability of all accessories and equipment with an authorized

Sea Ray dealer prior to purchase. Printed in the U.S.A. August 2002 © Sea Ray Boats, Inc. MRP#1691381



Sea Ray



THIS DRAWING IS THE PROPERTY OF SEA RAY BOATS, INC. ALL RIGHTS ARE RESERVED. THIS DRAWING OR INFORMATION CONTAINED HEREIN MAY NOT BE COPIED OR DISCLOSED TO OTHERS WITHOUT THE WRITTEN PERMISSION OF SEA RAY BOATS, INC.

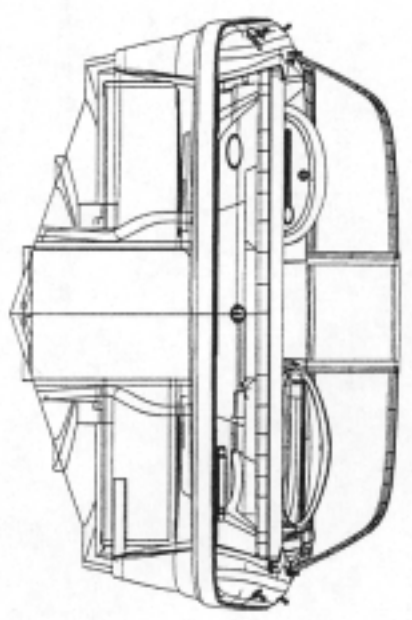
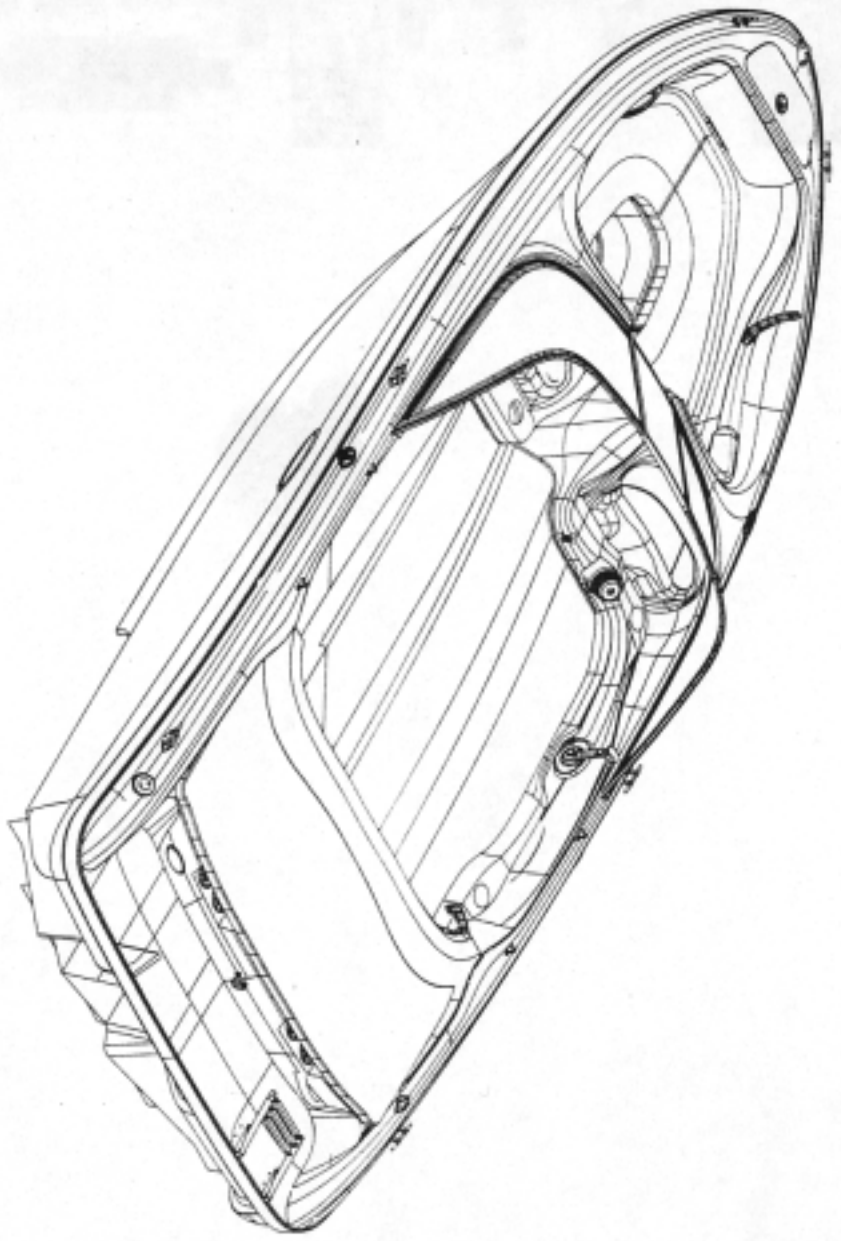
NOTES

REVISED BY

DATE

EDN NO.

CURRENT EDN NO.



LIBRARY OF CONGRESS
 SEP 22 2003
 COPY _____
 COPYRIGHT OFFICE

DVH 0191



ING TITLE COPYRIGHT DRAWINGS
 PLANT REV. NO./DATE
 PLANT APPROVAL BY
 PLANT STAMP NO.

CHECKED BY/ DATE
 APPROVED BY/ DATE
 UNIFORMS DRAWING, CAD FILE IN ORGANIZER BY: MODEL YEAR MODEL

MODEL 832BR 2001
 DRAWN BY/ DATE DRAWN S. MELLA
 INITIAL RELEASE EDN NO.
 DRAWING NO.
 1336-02-090 B OF 3I

THIS DRAWING IS THE PROPERTY OF SEA RAY BOATS, INC. ALL RIGHTS ARE RESERVED. THIS DRAWING OR INFORMATION CONTAINED MAY NOT BE COPIED OR DISCLOSED TO OTHERS WITHOUT THE WRITTEN PERMISSION OF SEA RAY BOATS, INC.

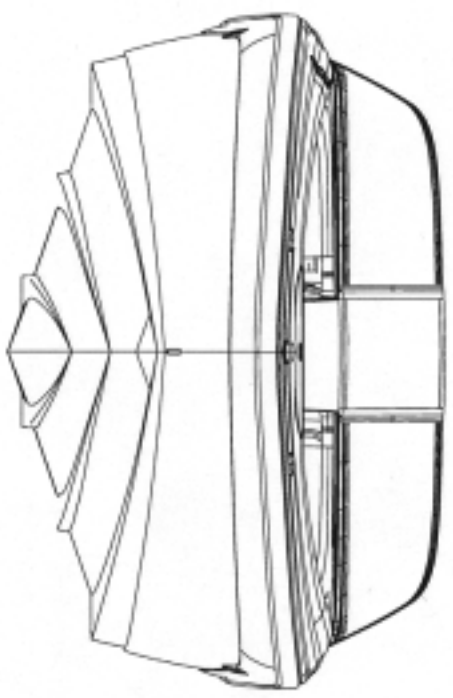
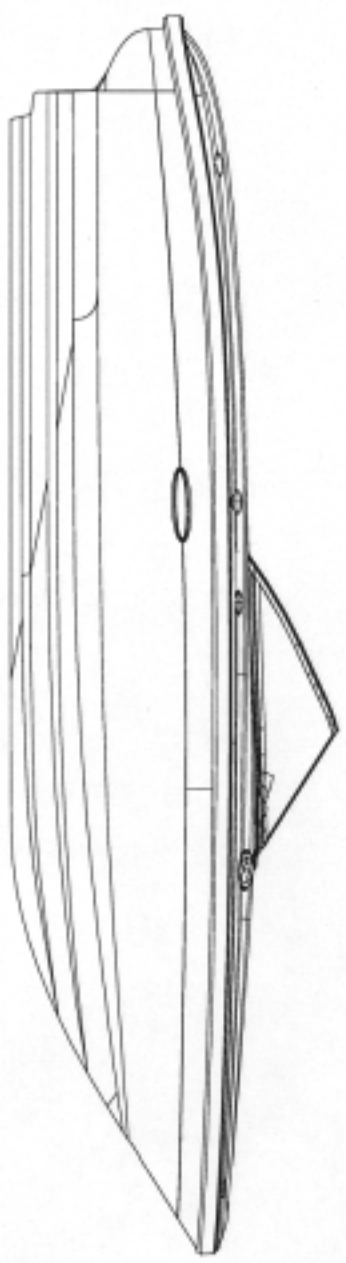
NOTES

REVISED BY

DATE

EDN REV. NO.

CURRENT EDN NO.



DVH 0191



TITLE COPYRIGHT DRAWINGS		MODEL IE29R 2001	
DRAWN BY NO. DATE S. MELIA	CHECKED BY/ DATE APPROVED BY/ DATE UNIDRAWPHICS DRAWING, CMO FILE IN CDRMANAGER BY: MODEL YEAR-MODEL	DRAWN BY/ DATE DRAWN INITIAL RELEASE EDN NO.	DRAWING NO. 1336-02-090 12 OF 20
PLANT APPROVAL BY PLANT EDN NO.	PLANT EDN NO.	PLANT EDN NO.	PLANT EDN NO.

THIS DRAWING IS THE PROPERTY OF SEA RAY BOATS, INC. ALL RIGHTS ARE RESERVED. THIS DRAWING OR INFORMATION CONTAINED HEREIN IS NOT TO BE COPIED OR DISCLOSED TO OTHERS WITHOUT THE WRITTEN PERMISSION OF SEA RAY BOATS, INC.

NOTES

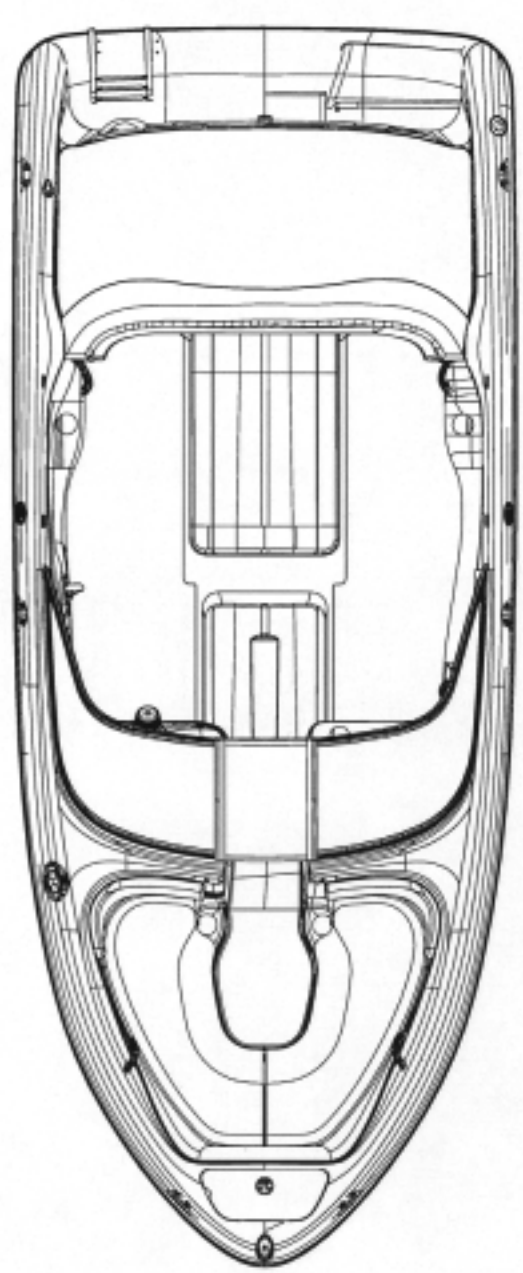
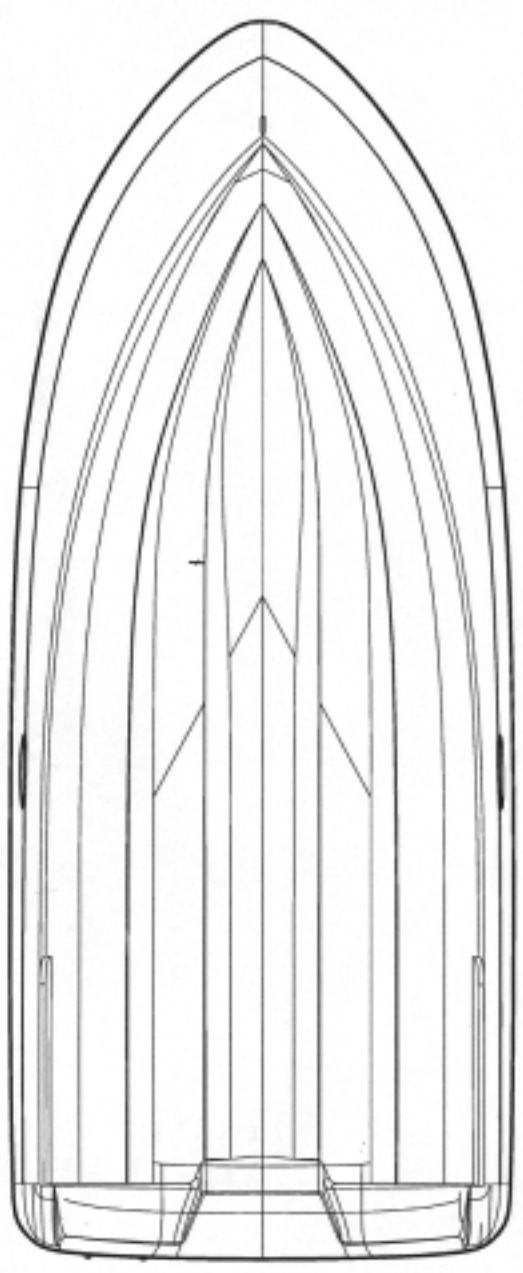
REVISED BY

DATE

ECN REV. NO.

CURRENT ECN NO.

DVH 0191



TITLE COPYRIGHT DRAWINGS

PLANT REV. NO./DATE
 PLANT APPROVAL BY
 PLANT START NO.
 ECN NO.

DESIGNED BY/ DATE
 APPROVED BY/ DATE
 UNIFORMS DRAWING, CAD FILE IN WORKBOOK BY 1 MODEL, YEAR, MODEL

MODEL 1828R 2001

DRAWN BY/ DATE DRAWN
 INITIAL, RELEASE ECN NO.

DRAWING NO. 11-09-01

1336-02-090 (3 OF 3)