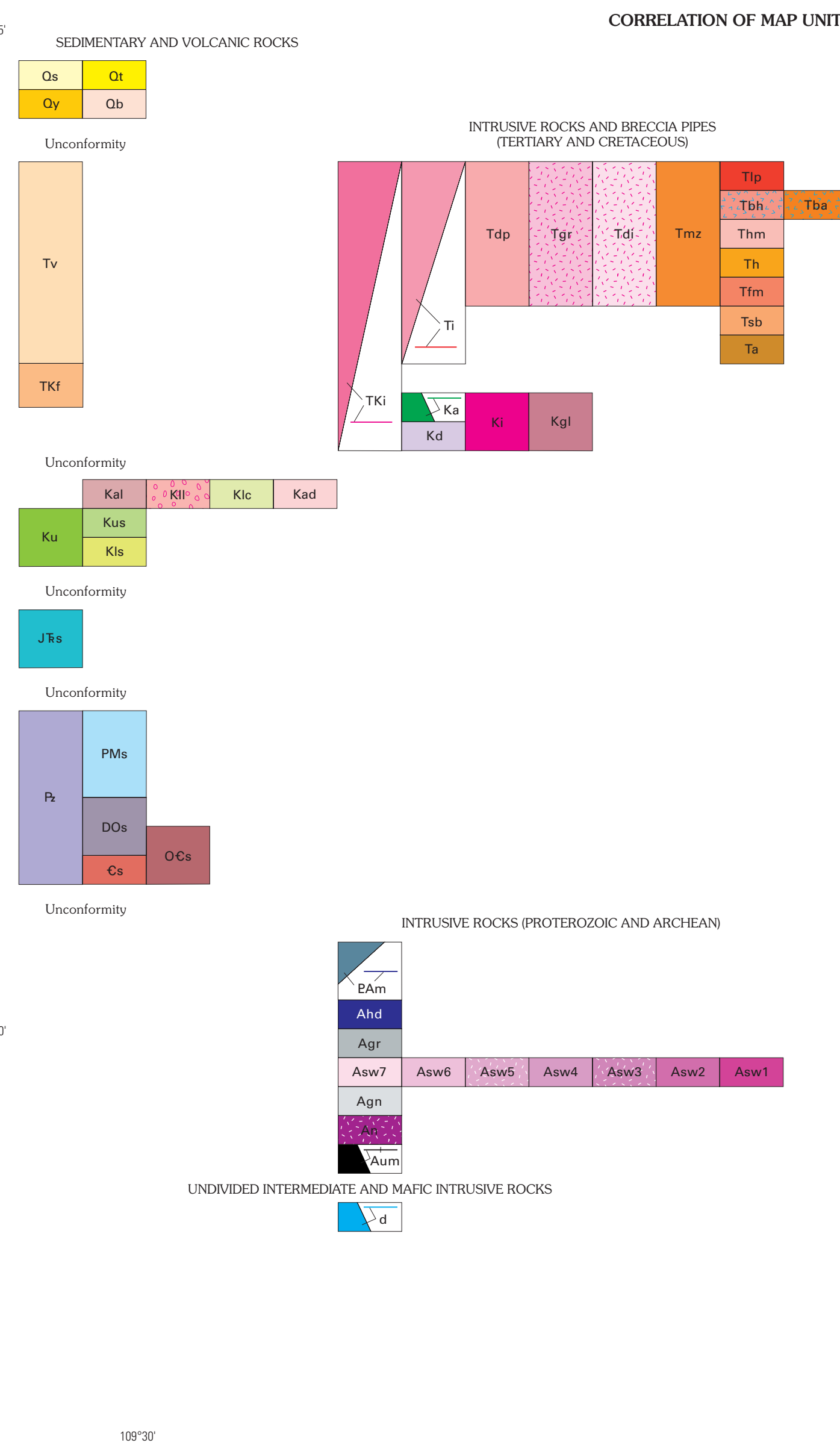
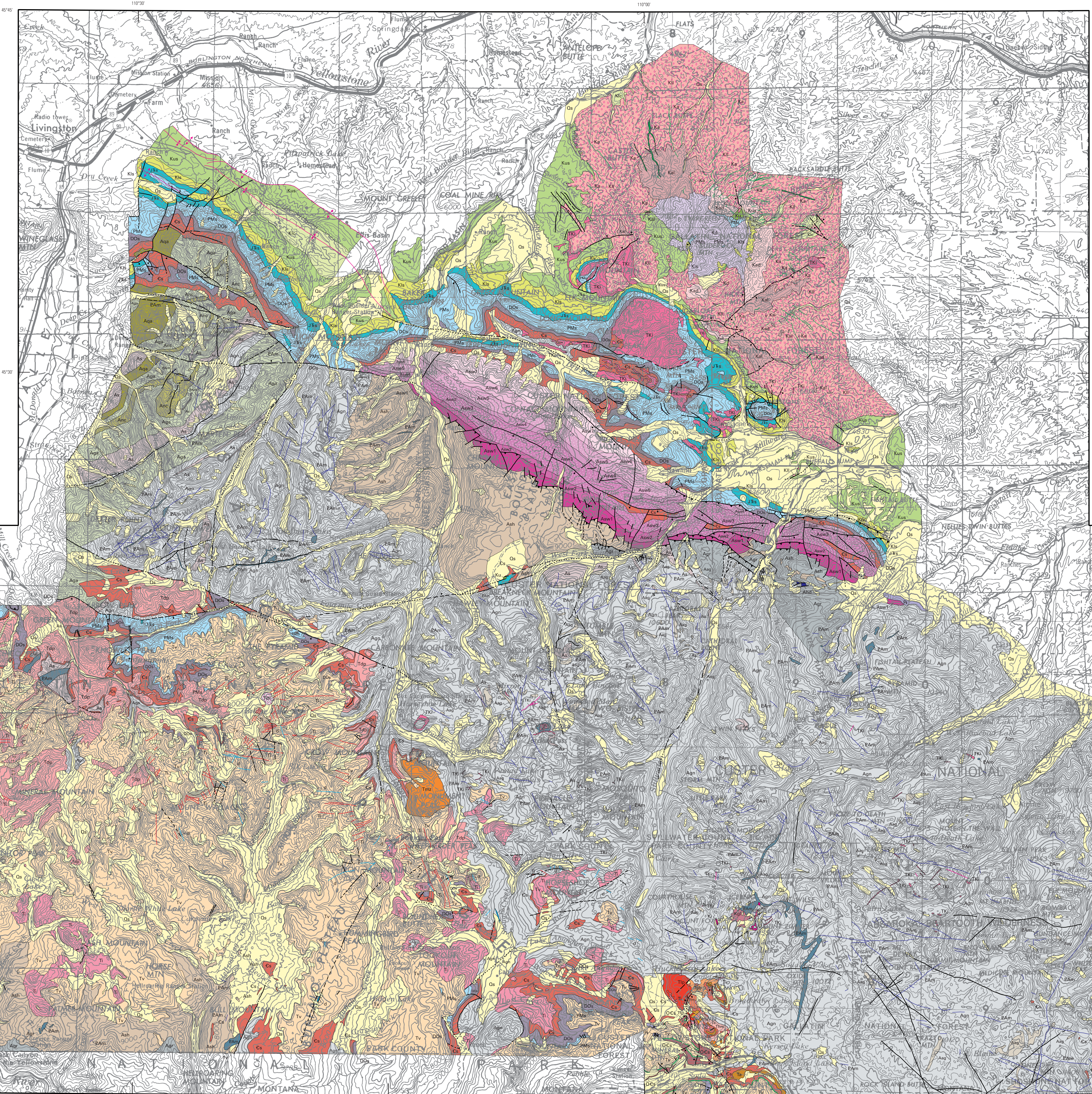


- SOURCES OF GEOLOGIC DATA
PATTERNED AREAS
1. Stevens, F.S., and Ambrosewicz, T.J., U.S. Geological Survey, ...
2. U.S. Geological Survey, ...
3. ...
4. ...
5. ...
6. ...
7. ...
8. ...
9. ...
10. ...
11. ...
12. ...
13. ...
14. ...
DASHED OUTLINES
1. ...
2. ...
3. ...
4. ...
5. ...
6. ...
7. ...
8. ...
9. ...
10. ...
11. ...
12. ...
13. ...
14. ...



DESCRIPTION OF MAP UNITS. A detailed legend listing geological units with their symbols and descriptions. Includes sections for: SEDIMENTARY AND VOLCANIC ROCKS; INTRUSIVE ROCKS AND BRECCIA PIPES; INTRUSIVE ROCKS PROTEROZOIC AND ARCHEAN; METAMORPHIC AND METASOMATIC ROCKS; and UNKNOW/INTERPRETED AND MARK INTRUSIVE ROCKS. Each unit is accompanied by a color-coded symbol and a brief description of its lithology and age.

Base from U.S. Geological Survey, 1:50,000
Belling, W.A., revised 1976; Swenson, 1980; revised 1972
Position: Universal Transverse Mercator, zone 12
1987 North American Datum

Geology compiled by B.S. Van Gosen, J.E. Elliott, E.A. du Bray, R.R. Carlson, and M.L. Zientek
Map mapping by J.E. Elliott, E.A. du Bray, R.R. Carlson, and M.L. Zientek
Manuscript approved for publication March 14, 2000

GENERALIZED GEOLOGIC MAP OF THE ABSAROKA-BEARTOOTH STUDY AREA, SOUTH-CENTRAL MONTANA
Compiled by B.S. Van Gosen, J.E. Elliott, E.J. LaRock, E.A. du Bray, R.R. Carlson, and M.L. Zientek
Digital database by Jeffery T. Silkwood; edited by Gregory N. Green and B.S. Van Gosen
2000

INDEX TO MAPPED AREA
Any use of trade names on this publication is for
descriptive purposes only and does not imply
endorsement by the U.S. Geological Survey.
The maps produced in digital form are available
in digital form on a separate poster.
For sale by U.S. Geological Survey Information Services
Box 3500, Foster City, CA 94025
This map is available as a PDF at
http://www.govinfo.gov/
ARCHIVE coverage is available at
http://www.govinfo.gov/