

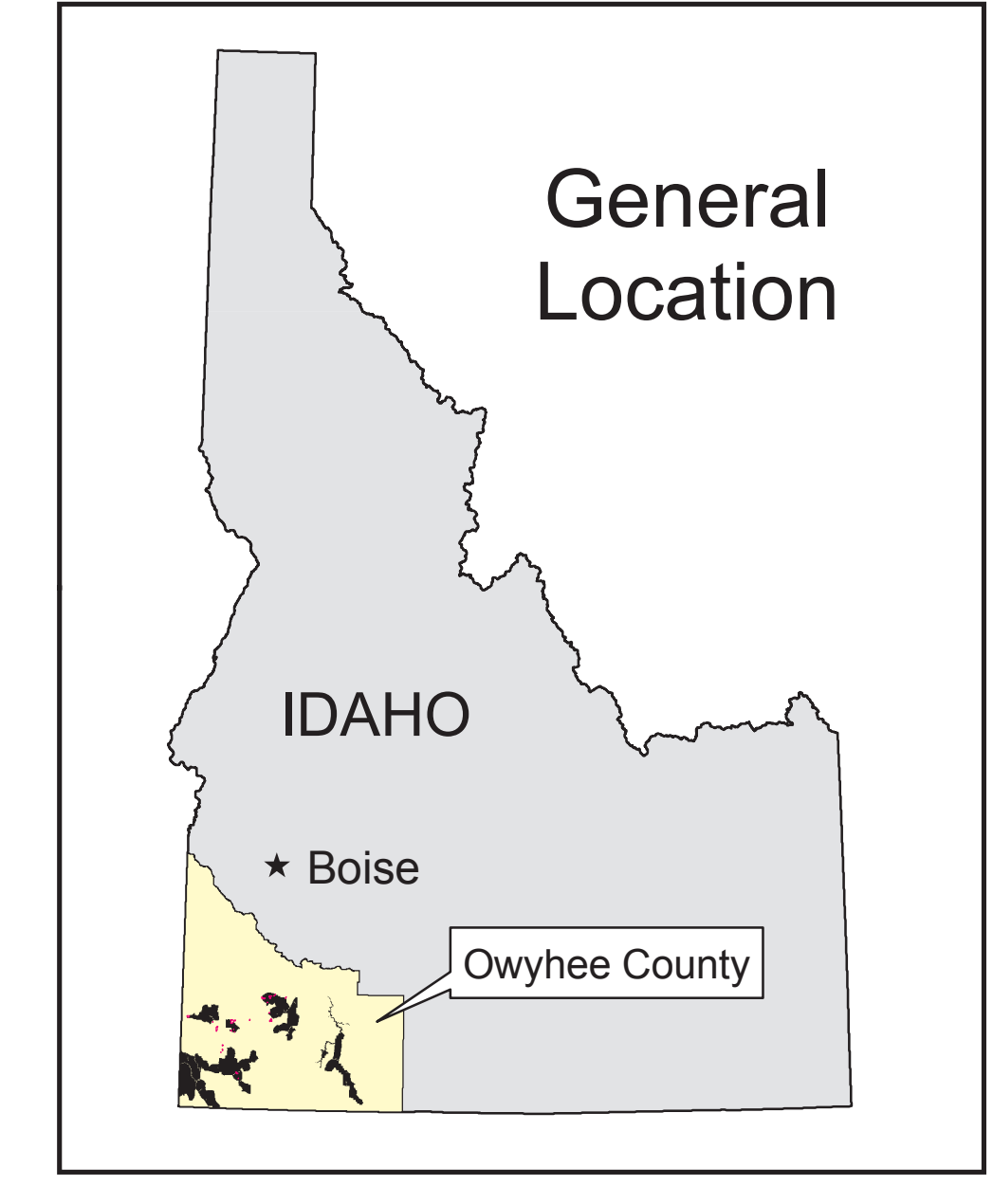
# Owyhee Overview

March 25, 2008

This map prepared at the request of  
Senator Mike Crapo.

## Legend

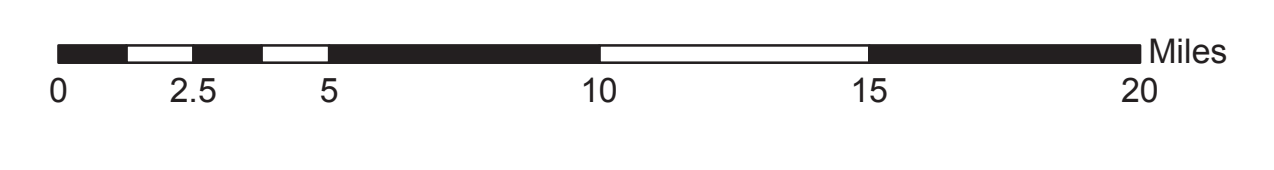
- Town
  - County Seat
  - Paved or Improved Road
  - Pipeline
  - Proposed Wild & Scenic River Designations (approximate)
  - Stream (perennial)
  - Lake, Reservoir, or Wide River (perennial)
  - Township
  - Section
  - Proposed for Acquisition
  - Proposed Ungrazed Wilderness
  - Proposed Reduced Grazed Wilderness
  - Proposed Wilderness (BLM land is yellow)
  - Non-WSA Wilderness (BLM land)
  - Released from Wilderness Study Area status
  - Birds of Prey National Conservation Area
  - Oregon Trail National Historic Trail
  - County Boundary
  - State Boundary
- | Land Status |   |
|-------------|---|
|             | Bureau of Land Management                     |
|             | Private                                       |
|             | State of Idaho                                |
|             | State Fish and Game or Parks and Recreation   |
|             | Indian Reservation                            |
|             | Military                                      |
|             | Bureau of Reclamation                         |
|             | US Fish and Wildlife/National Wildlife Refuge |



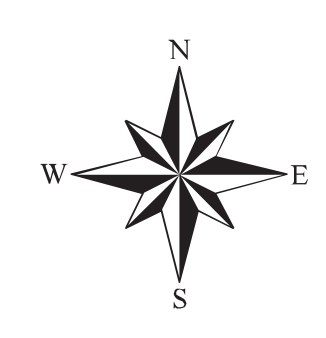
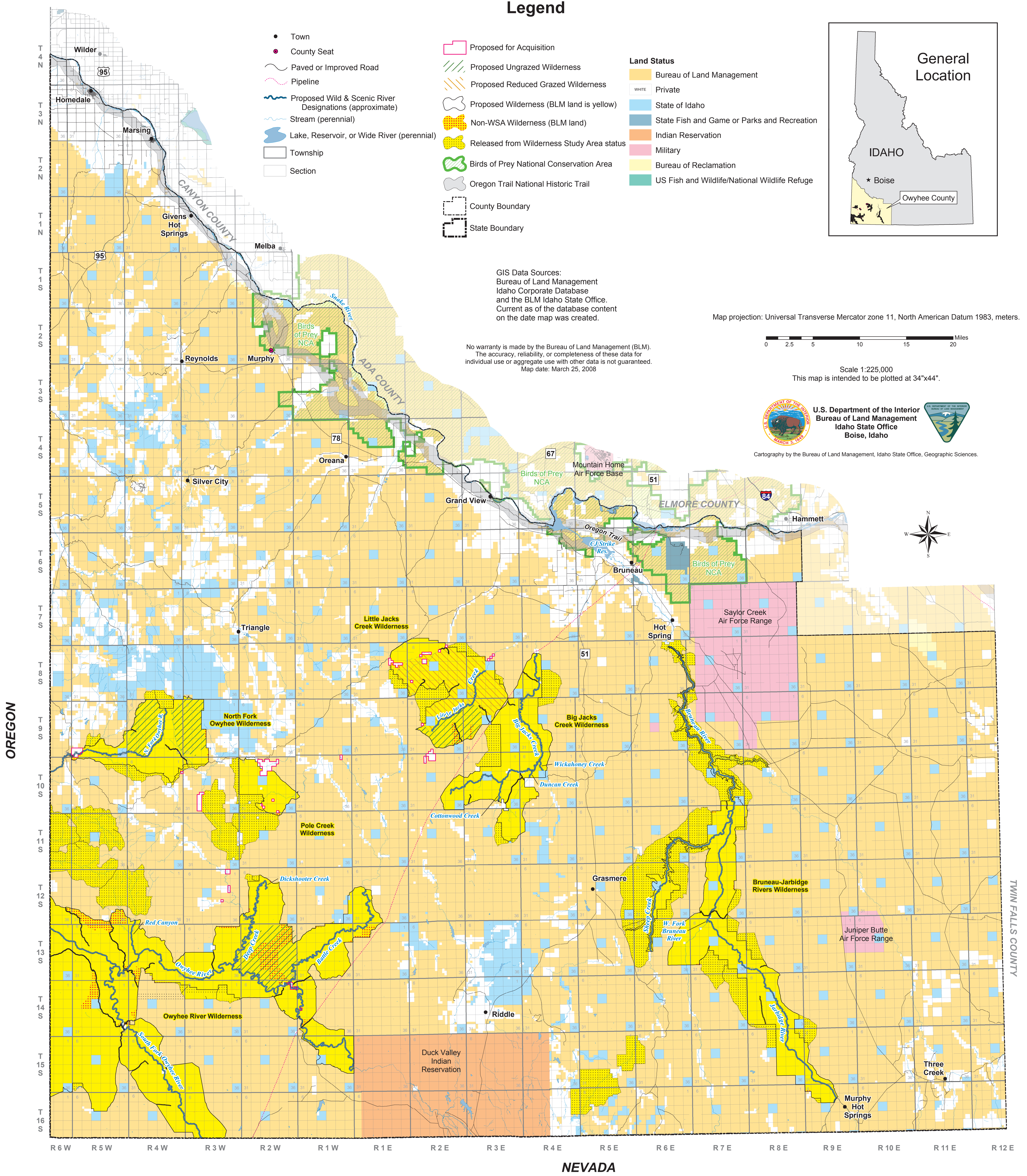
GIS Data Sources:  
Bureau of Land Management  
Idaho Corporate Database  
and the BLM Idaho State Office.  
Current as of the database content  
on the date map was created.

No warranty is made by the Bureau of Land Management (BLM).  
The accuracy, reliability, or completeness of these data for  
individual use or aggregate use with other data is not guaranteed.  
Map date: March 25, 2008

Map projection: Universal Transverse Mercator zone 11, North American Datum 1983, meters.



Scale 1:225,000  
This map is intended to be plotted at 34"x44".



OREGON

TWIN FALLS COUNTY

NEVADA