

Appendix B

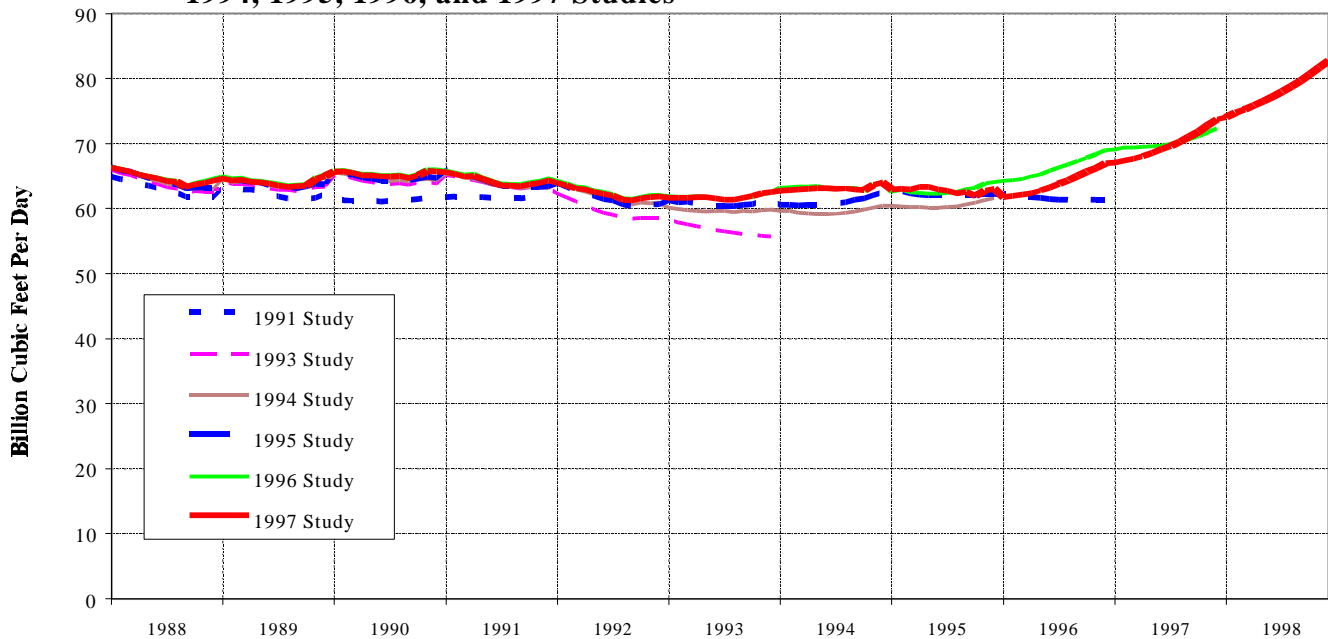
## **Comparison of Productive Capacity**

## Appendix B

# Comparison of Productive Capacity

Comparisons of base case productive capacities for this and all previous studies were made (Figure B1). In nearly all instances, capacities for the last two studies were equal to or higher than those in earlier studies.

**Figure B1. Comparisons of Base Case Dry Gas Productive Capacity for the 1991, 1993, 1994, 1995, 1996, and 1997 Studies**



Note: Monthly capacity estimates are for base case.

Sources: 1991 Study: Energy Information Administration. *Natural Gas Productive Capacity for the Lower 48 States 1980 Through 1991*. DOE/EIA-0542(91) (Washington, DC January 24, 1991). 1993 Study: Energy Information Administration. *Natural Gas Productive Capacity for the Lower 48 States 1983 Through 1993*. DOE/EIA-0542(93) (Washington, DC March 10, 1993). 1994 Study: Energy Information Administration. *Natural Gas Productive Capacity for the Lower 48 States 1980 Through 1995*. DOE/EIA-0542(94) (Washington, DC July 14, 1994). 1995 Study: Energy Information Administration. *Natural Gas Productive Capacity for the Lower 48 States 1984 Through 1996*. DOE/EIA-0542(96) (Washington, DC February 9, 1996). 1996 Study: Energy Information Administration. *Natural Gas Productive Capacity for the Lower 48 States 1985 Through 1997*. DOE/EIA-0542(97) (Washington, DC