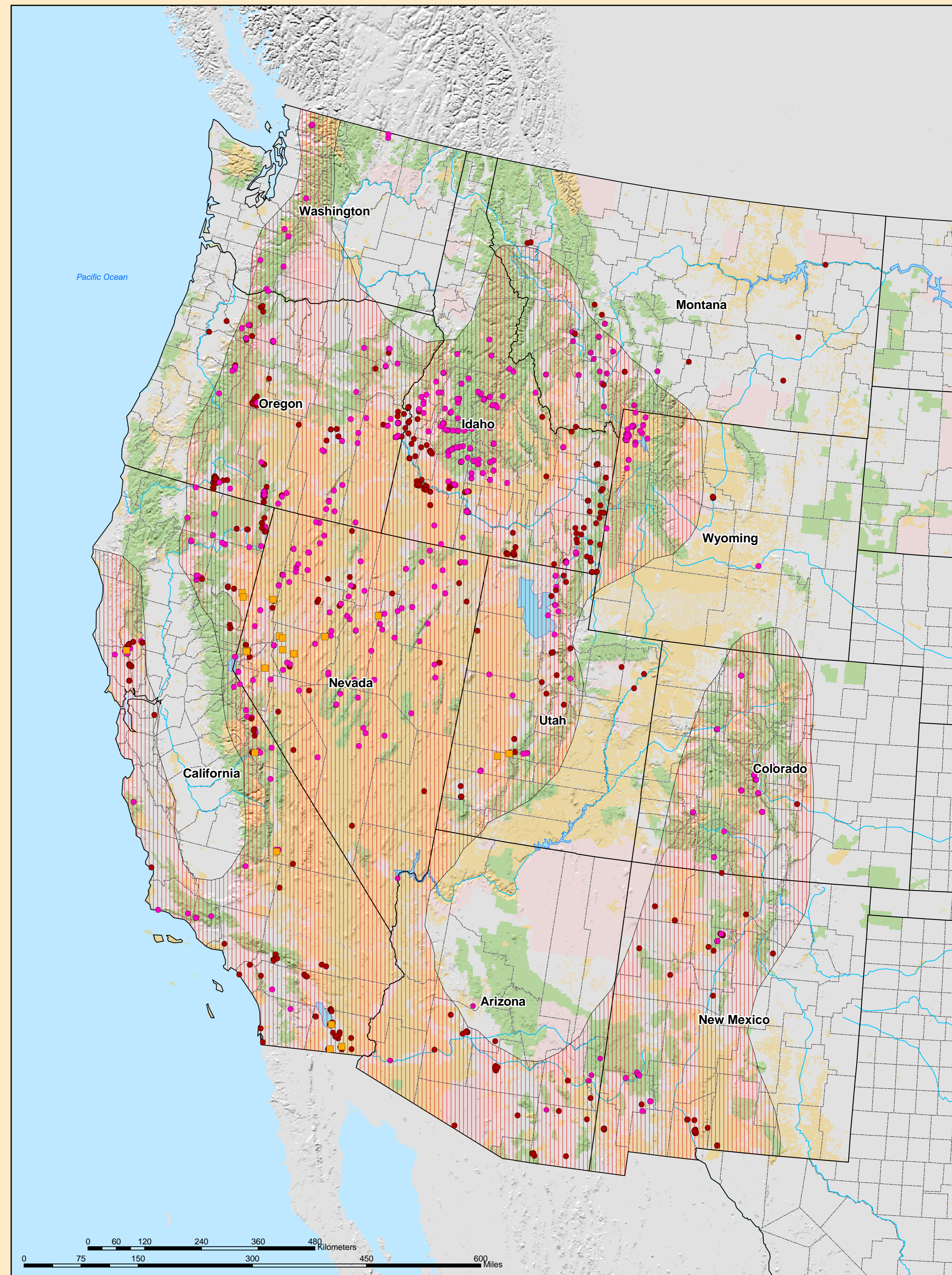
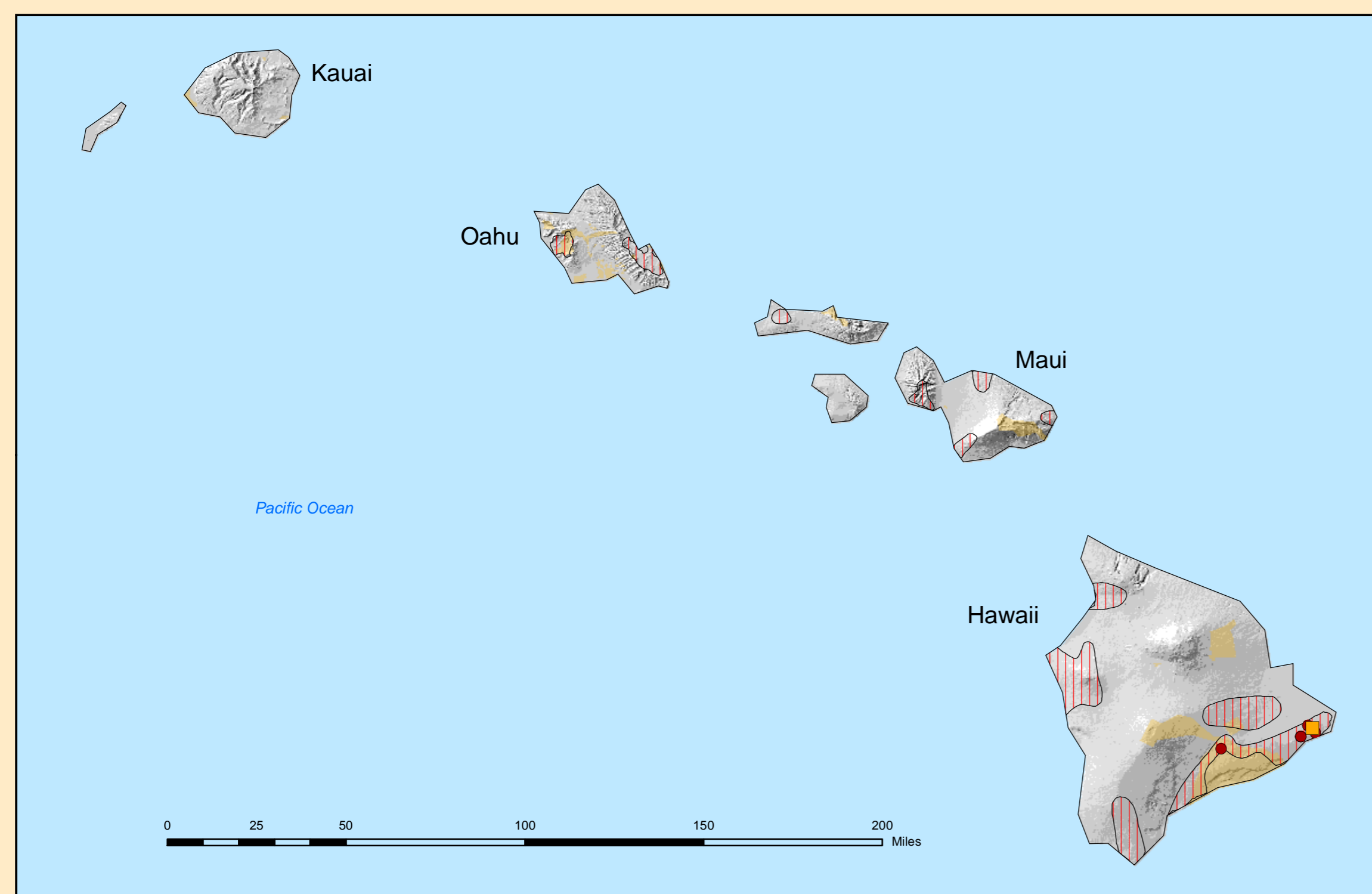
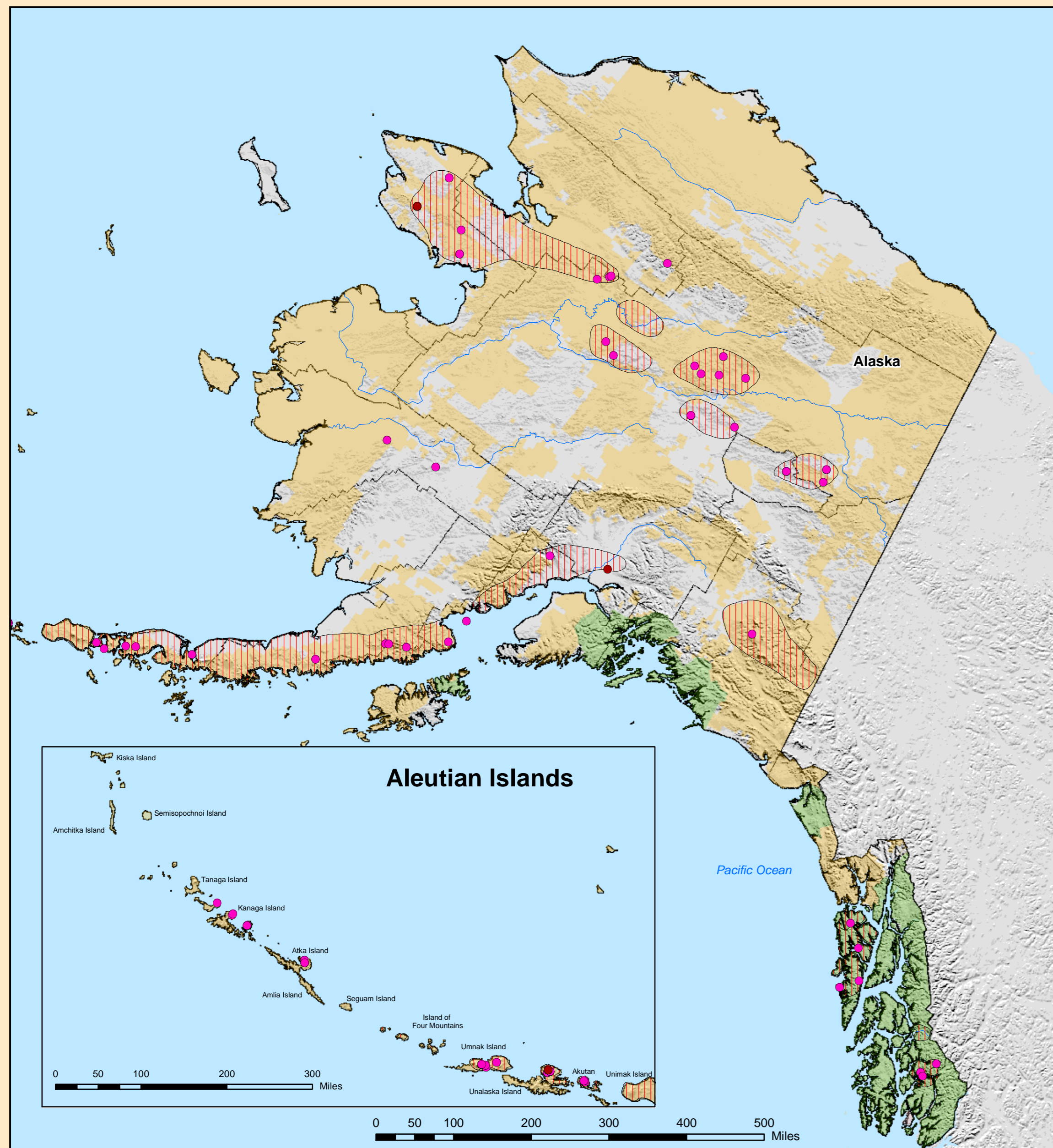


# Western United States Geothermal Resources



## Legend

- Rivers/Streams
- County Boundaries
- State Boundaries
- Lakes/Reservoirs

## Geothermal Categories

- Electrical Generation
- Regions of Known or Potential Geothermal Resources
- Wells > 50 Degrees C
- Springs > 50 Degrees C

## Ownership

- State and Private Lands
- Bureau of Land Management and Other Federal Lands
- Major Lakes and Reservoirs
- Native American Lands
- U.S. Forest Service Lands

Map Prepared by Patrick Laney and Julie Brizzee at the Idaho National Engineering and Environmental Laboratory  
 For  
 The U.S. Department of Energy Office of Energy Efficiency and Renewable Energy Geothermal Technologies Program

Western United States Geothermal Resources  
 Publication No. - INEEL/MISC-0301046 Rev. 1  
 November 2003

Map Projection Information:  
 Projection: Albers  
 Central Meridian: -96.00  
 Standard Parallel 1: 20.00  
 Standard Parallel 2: 60.00  
 Latitude Of Origin: 40.00