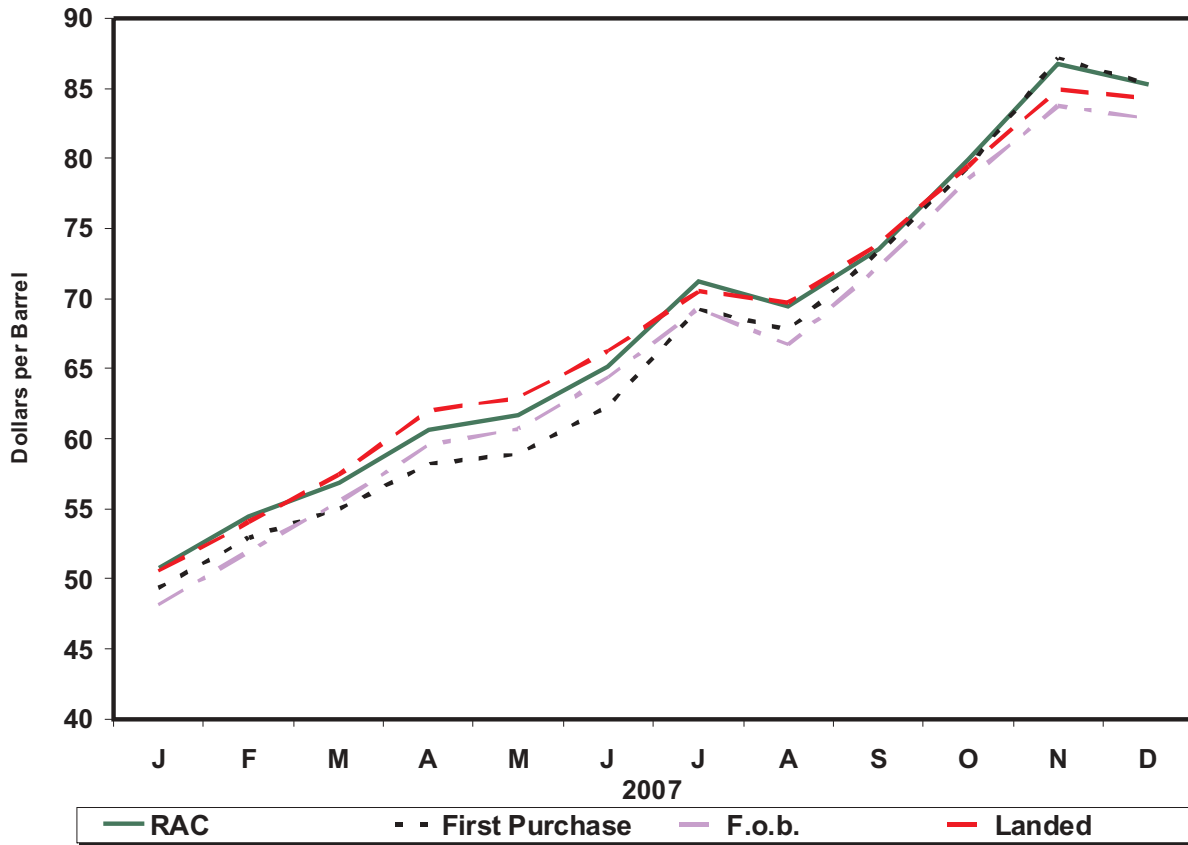


**Figure 1. Crude Oil Prices**



Sources: Energy Information Administration, Form EIA-182, "Domestic Crude Oil First Purchase Report"; Form EIA-856, "Monthly Foreign Crude Oil Acquisition Report"; and Form EIA-14, "Refiners' Monthly Cost Report."

**Table 1A. Refiner Acquisition Cost of Crude Oil by PAD Districts**

(Dollars per Barrel)

Year Month	U.S.			PAD District 1			PAD District 2		
	Domestic	Imported	Composite	Domestic	Imported	Composite	Domestic	Imported	Composite
<b>2004</b> .....	<b>38.97</b>	<b>35.90</b>	<b>36.98</b>	<b>40.75</b>	<b>38.29</b>	<b>38.34</b>	<b>40.80</b>	<b>35.63</b>	<b>38.38</b>
<b>2005</b>									
January .....	41.82	37.56	39.01	47.29	42.02	42.10	43.95	35.79	40.11
February .....	43.80	39.72	41.05	47.71	44.85	44.90	45.72	37.51	41.90
March .....	48.87	45.73	46.78	52.89	50.84	50.89	50.65	42.80	46.99
April .....	49.64	45.25	46.71	W	49.99	50.05	51.57	41.07	46.88
May .....	47.91	43.19	44.84	51.67	47.11	47.19	48.95	39.44	44.88
June .....	52.13	49.28	50.30	55.74	52.22	52.27	52.74	46.19	50.00
July .....	55.80	52.79	53.83	W	56.53	56.55	56.71	51.55	54.50
August .....	60.57	58.67	59.30	62.40	62.18	62.18	61.68	55.63	58.90
September .....	62.84	58.79	60.18	65.25	60.76	60.84	64.34	54.81	60.06
October .....	60.79	55.31	57.18	63.89	58.91	59.01	61.95	53.17	57.96
November .....	56.52	49.97	52.13	60.78	55.13	55.23	58.14	48.30	53.54
December .....	55.89	50.85	52.51	59.92	57.86	57.89	57.06	45.93	51.79
<b>2005</b> .....	<b>52.94</b>	<b>48.86</b>	<b>50.24</b>	<b>56.89</b>	<b>53.29</b>	<b>53.35</b>	<b>54.57</b>	<b>46.11</b>	<b>50.75</b>
<b>2006</b>									
January .....	60.22	55.85	57.33	64.04	62.33	62.37	60.66	50.73	55.81
February .....	58.97	52.80	54.82	63.27	58.17	58.26	60.49	46.39	53.49
March .....	58.48	55.31	56.38	63.51	60.47	60.52	59.76	47.16	53.78
April .....	64.06	62.41	62.98	68.46	67.31	67.33	65.07	54.75	60.55
May .....	67.11	64.39	65.34	70.01	67.96	68.00	68.60	64.17	66.62
June .....	67.76	63.79	65.13	70.75	67.93	67.99	69.05	62.39	65.94
July .....	70.55	67.99	68.86	73.76	71.71	71.75	72.22	67.03	69.81
August .....	70.48	66.45	67.77	73.97	70.38	70.46	71.62	64.50	68.39
September .....	62.51	57.29	58.92	67.79	61.18	61.31	61.32	53.46	57.67
October .....	56.67	52.70	54.04	63.46	56.66	56.80	56.88	48.65	53.21
November .....	55.36	52.70	53.61	59.45	58.36	58.38	56.43	49.10	52.81
December .....	57.81	54.97	55.98	61.77	59.74	59.79	59.05	52.57	55.99
<b>2006</b> .....	<b>62.62</b>	<b>59.02</b>	<b>60.24</b>	<b>66.92</b>	<b>63.53</b>	<b>63.60</b>	<b>63.66</b>	<b>55.19</b>	<b>59.70</b>
<b>2007</b>									
January .....	53.10	49.57	50.77	W	54.21	54.27	53.34	46.35	49.99
February .....	55.72	53.77	54.45	W	57.68	57.71	57.35	52.68	55.03
March .....	57.86	56.31	56.84	W	61.38	61.36	60.31	55.23	57.68
April .....	61.13	60.45	60.68	W	65.70	65.66	62.80	56.44	59.58
May .....	62.04	61.55	61.71	63.62	67.30	67.23	63.00	57.79	60.67
June .....	64.95	65.24	65.14	66.31	71.50	71.38	66.31	58.74	63.04
July .....	72.08	70.75	71.24	68.98	76.59	76.42	73.85	64.87	69.98
August .....	71.57	68.28	69.46	71.80	70.89	70.91	72.31	65.60	69.23
September .....	75.84	72.34	73.54	76.58	78.22	78.19	78.06	66.74	73.02
October .....	82.20	78.61	79.87	81.99	83.63	83.60	84.64	71.66	78.88
November .....	89.25	85.53	86.78	87.86	89.85	89.81	92.76	81.96	87.25
December .....	88.98	83.21	85.29	88.79	89.60	89.59	90.84	71.29	81.59
<b>2007</b> .....	<b>69.65</b>	<b>67.04</b>	<b>67.94</b>	<b>70.62</b>	<b>72.48</b>	<b>72.44</b>	<b>71.10</b>	<b>62.17</b>	<b>66.90</b>

See footnotes at end of table.

**Table 1A. Refiner Acquisition Cost of Crude Oil by PAD Districts**

(Dollars per Barrel) — Continued

Year Month	PAD District 3			PAD District 4			PAD District 5		
	Domestic	Imported	Composite	Domestic	Imported	Composite	Domestic	Imported	Composite
<b>2004</b> .....	<b>39.28</b>	<b>34.79</b>	<b>35.87</b>	<b>39.98</b>	<b>35.93</b>	<b>37.81</b>	<b>36.81</b>	<b>38.20</b>	<b>37.30</b>
<b>2005</b>									
January .....	43.28	36.57	38.03	42.35	38.61	40.48	38.10	38.14	38.12
February .....	44.78	38.40	39.83	44.06	39.29	41.75	40.59	40.37	40.50
March .....	49.64	44.83	45.90	50.27	45.14	47.58	46.15	46.54	46.29
April .....	49.72	44.54	45.69	51.67	43.81	47.64	47.10	46.89	47.02
May .....	48.59	42.60	44.08	48.65	41.46	44.88	45.53	45.34	45.46
June .....	52.25	49.02	49.84	51.76	48.96	50.22	51.24	49.51	50.51
July .....	55.91	51.95	52.90	55.52	53.12	54.17	54.50	52.87	53.84
August .....	60.70	58.14	58.71	60.77	57.64	59.00	59.08	60.18	59.53
September .....	62.97	58.96	59.90	62.27	55.53	58.77	60.94	60.67	60.82
October .....	61.37	54.16	55.71	60.09	54.19	56.96	58.65	57.20	58.02
November .....	56.93	47.95	49.87	56.88	50.70	53.65	54.14	52.24	53.33
December .....	56.36	49.69	51.11	55.80	48.44	51.96	54.15	53.05	53.70
<b>2005</b> .....	<b>53.17</b>	<b>47.77</b>	<b>48.99</b>	<b>53.50</b>	<b>48.54</b>	<b>50.89</b>	<b>50.61</b>	<b>50.77</b>	<b>50.67</b>
<b>2006</b>									
January .....	60.29	55.35	56.52	59.59	52.50	55.79	59.70	57.13	58.65
February .....	59.77	52.48	54.20	56.90	48.71	52.63	56.59	55.67	56.18
March .....	59.58	55.85	56.74	53.19	48.81	51.31	56.64	57.25	56.92
April .....	64.90	62.91	63.39	61.18	58.44	59.93	62.17	64.13	63.08
May .....	67.43	62.99	64.07	66.25	65.15	65.69	64.93	66.03	65.41
June .....	68.43	62.63	64.06	64.99	62.33	63.64	65.75	64.79	65.29
July .....	70.50	66.99	67.87	69.72	66.71	68.12	68.60	69.24	68.89
August .....	70.51	65.39	66.61	69.12	64.68	66.81	68.95	68.08	68.50
September .....	63.71	56.16	58.06	61.23	53.98	57.71	63.10	61.53	62.29
October .....	57.87	51.57	53.15	54.45	48.22	51.13	54.97	57.84	56.34
November .....	56.51	51.82	53.09	53.37	47.29	50.14	52.78	54.51	53.49
December .....	58.27	54.17	55.29	56.26	51.30	53.69	55.85	56.02	55.92
<b>2006</b> .....	<b>63.17</b>	<b>58.34</b>	<b>59.54</b>	<b>60.80</b>	<b>56.17</b>	<b>58.45</b>	<b>60.90</b>	<b>61.44</b>	<b>61.15</b>
<b>2007</b>									
January .....	54.68	48.87	50.33	50.23	47.84	48.95	51.32	50.27	50.89
February .....	56.67	52.92	53.92	52.89	51.92	52.41	53.13	54.28	53.58
March .....	57.94	55.26	55.94	55.14	52.99	54.10	55.50	56.58	55.95
April .....	61.87	60.11	60.59	58.22	55.87	57.11	58.82	60.64	59.66
May .....	62.61	60.55	61.03	58.85	57.98	58.45	60.81	61.84	61.31
June .....	65.08	64.81	64.88	61.93	58.57	60.42	63.84	66.63	65.12
July .....	72.72	70.44	71.08	68.18	64.13	66.29	69.88	72.14	70.86
August .....	72.52	67.41	68.91	66.87	66.02	66.48	70.24	71.10	70.63
September .....	76.30	71.46	72.74	71.43	65.88	68.66	73.52	75.67	74.55
October .....	82.30	78.61	79.68	77.13	67.44	72.22	80.10	81.75	80.89
November .....	89.96	84.69	86.07	84.09	77.66	81.20	85.64	88.54	86.95
December .....	90.04	83.84	85.69	81.77	66.72	75.59	87.00	87.77	87.32
<b>2007</b> .....	<b>70.58</b>	<b>66.34</b>	<b>67.48</b>	<b>65.79</b>	<b>60.81</b>	<b>63.43</b>	<b>67.47</b>	<b>69.42</b>	<b>68.34</b>

W = Withheld to avoid disclosure of individual company data.

Notes: U.S. is defined as the 50 states, the District of Columbia, Puerto Rico, the Virgin Islands, and all American territories and possessions. Values reflect the PAD District in which the crude oil is intended to be refined.

Source: Form EIA-14, "Refiners' Monthly Cost Report," January 2004 to present.