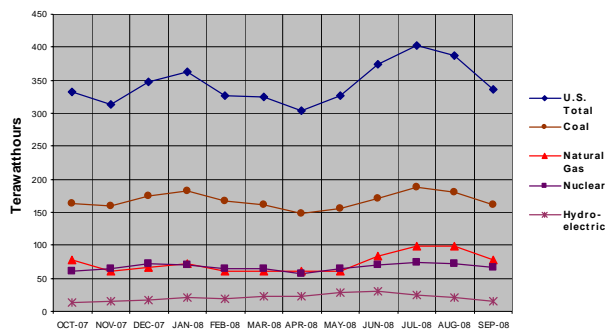


Executive Summary

Generation: Data from the National Oceanic and Atmospheric Administration (NOAA) show that September 2008 was 1.7 percent “below average consumption.” September 2007, in contrast, was the eighth warmest on record. Additionally, the Commerce Department reported that real gross domestic product decreased from the second quarter to the third quarter of 2008, and the manufacturing component of the Federal Reserve’s Industrial Production Index was down 4.8 percent compared to the September 2007 value. The relatively normal 2008 weather compared to the hot September 2007 and the decline in economic activity contributed to a September 2008 net generation level that was 5.2 percent lower than the previous year.

Most (55.7 percent) of the 12-month decline in September levels is attributable to the fall in natural gas-fired generation. Gas-fired generation totals in two States – Texas and Mississippi – accounted for over half of this decline. Coal-fired generation in September 2008 was 4.5 percent lower than it was in September 2007. Drops in coal-fired generation in Ohio and West Virginia accounted for 37.3 percent of this decline. Net generation from conventional hydroelectric sources, however, was 12.7 percent higher than it had been in September 2007. This increase is primarily attributable to rises in Washington and New York, although Missouri’s contribution was significant as easing drought conditions contributed to State-level generation that was 465.5 percent higher than it was in September 2007. Petroleum liquid-fired generation was 17.9 percent lower compared to a year ago, with its overall share of net generation continuing to shrink. As wind-powered generation has decreased in recent months, the September 2008 generation was total was 9.5 percent lower than it was in September 2007. The September-to-September decline in Texas accounted for 74.0 percent of the national fall for wind power.

Figure 1: Net Generation by Major Energy Source: Total (All Sectors), October 2007 through September 2008



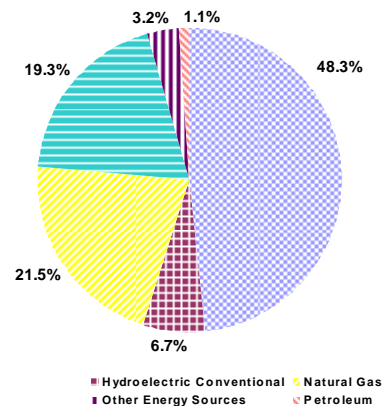
Year-to-date, net generation was down 0.8 percent from 2007 levels. Net generation attributable to coal-fired plants

was down 0.5 percent. Nuclear generation was down 0.2 percent. Generation from petroleum liquids was down 41.4 percent, while natural gas-fired generation was down 2.0 percent. The September increase in conventional hydroelectric generation contributed to a year-to-date total that was up 5.2 percent.

Even with the decline in September wind generation, year-to-date wind generation was up 38.7 percent due primarily to increased generation in Texas and Colorado. Together, these States accounted for 54.8 percent of the year-to-date national rise in wind generation.

Coal-fired plants contributed 48.3 percent of the Nation’s electric power, year-to-date. Nuclear plants contributed 19.3 percent, while 21.5 percent was generated at natural gas-fired plants. Of the 1.1 percent generated by petroleum-fired plants, petroleum liquids represented 0.8 percent, with the remainder from petroleum coke. Conventional hydroelectric power provided 6.7 percent of the total, while other renewables (primarily biomass, but also geothermal, solar, and wind) and other miscellaneous energy sources generated the remaining electric power (Figure 2).

Figure 2: Net Generation Shares by Energy Source: Total (All Sectors), Year-to-Date through September, 2008



Consumption of Fuels: Consumption of coal for power generation in September 2008 was down by 3.0 percent compared to September 2007, a decrease that was in line with the fall in generation. For the same time period, consumption of petroleum liquids and petroleum coke decreased by 20.7 percent and 17.6 percent, respectively, while the consumption of natural gas decreased by 15.5 percent.

Year-to-date, consumption of coal increased by less than one-tenth of one percent. Natural gas consumption decreased by 6.8 percent, while the consumption of petroleum liquids and petroleum coke fell by 42.1 percent and 16.3 percent, respectively.

Fuel Stocks, Electric Power Sector, September 2008

Total electric power sector coal stocks increased between September 2007 and September 2008 by 1.1 million tons. Stocks of bituminous coal (including coal synfuel) decreased by 19.2 percent, or 13.0 million tons between September 2007 and September 2008 (from 68.0 to 54.9 million tons). Subbituminous coal stocks grew by a similar margin, 14.7 million tons, between September 2007 and September 2008 (from 71.2 to 85.8 million tons).

Electric power sector liquid petroleum stocks totaled 39.7 million barrels at the end of September 2008, a decrease of 8.7 percent (3.8 million barrels) from September 2007. September 2008 stocks were 1.3 percent (0.5 million barrels) lower than at the end of August 2008.

Fuel Receipts and Costs, All Sectors, September 2008

In September 2008, the price of coal to electricity generators maintained the August level, thereby breaking the recent upward trend. The downward trend in the prices of petroleum liquids and natural gas continued in September. Receipts of coal, petroleum liquids, and natural gas declined from their August 2008 level and from their September 2007 level.

The average price paid for petroleum liquids decreased from \$19.63 per MMBtu in August 2008 to \$16.98 in September. This was a 13.5-percent decrease and a 77.8-percent increase from September 2007. Receipts of petroleum liquids in September 2008 were 4.3 million barrels, a 4.8-percent decrease from August 2008 and a 34.5-percent decrease from September 2007. This decrease is understandable when taking the aforementioned 77.8-percent price increase into consideration.

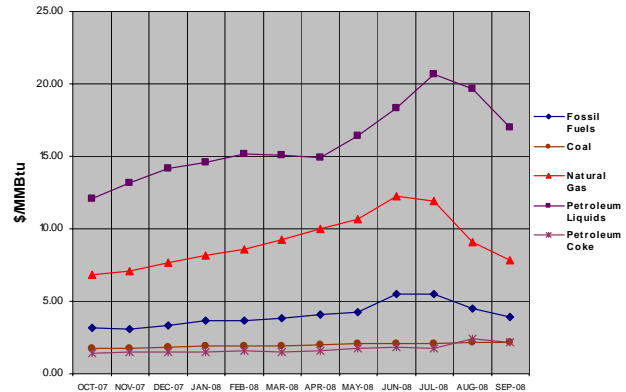
The average price paid for natural gas by electricity generators in September was \$7.87 per MMBtu, a 13.6-percent decrease from the August 2008 level of \$9.11. The September price was 28.2 percent higher than the September 2007 price of \$6.14 per MMBtu. Receipts of natural gas were 672.4 million Mcf, down 19.6 percent from August 2008 and down 5.8 percent from September 2007.

The average price paid for coal in September 2008 was \$2.18 per MMBtu, which was the same price paid in August. It was 22.5 percent higher when compared with the September 2007 price of \$1.78 per MMBtu. Receipts of coal were 89.1 million tons, down 5.2 percent when

compared with August 2008 data and down 1.1 percent from September 2007. The overall price for fossil fuels was \$3.91 per MMBtu in September 2008, a 13.3-percent decrease from August 2008, and 24.9 percent higher than in September 2007.

Year-to-date (January through September) 2008 prices compared to the same period last year were up 39.6 percent for natural gas, 90.7 percent for petroleum liquids, and 15.3 percent for coal. Year-to-date 2008 receipts compared to the same period last year were up 4.2 percent for natural gas. Year-to-date receipts for petroleum liquids and coal were down 27.9 percent and 2.1 percent, respectively.

Figure 3: Electric Power Industry Fuel Costs, October 2007 through September 2008



Sales, Revenue, and Average Retail Price, September 2008

The average retail price of electricity for September 2008 was 10.31 cents per kilowatt-hour (kWh), 3.0 percent lower than August 2008 when the average retail price of electricity was 10.63 cents per kWh, and 9.2 percent higher than September 2007 when the price was 9.44 cents per kWh. The typical decrease in electricity demand due to more moderate temperatures at summer's end led to lower prices than in August 2008. Retail sales between September 2007 and September 2008 decreased 3.2 percent due to the slowing economy and comparably less cooling demand than September 2007. The average price of residential electricity for September 2008 decreased 0.16 cents to 11.94 cents per kWh, down from 12.10 cents per kWh in August 2008 when cooling demand was higher. At 11.94 cents per kWh, the average residential price of electricity increased by 9.1 percent from September 2007. These increases in the retail electricity prices are influenced by the increases in fossil fuel prices for the same period.

Sales: For September 2008, sales in the residential and industrial sectors decreased by 8.6 and 0.9 percent, respectively, while sales in the commercial sector increased by 0.9 percent as compared to September 2007. For the month, total retail sales were 325.4 billion kWh, a decrease of 29.4 billion kWh from August 2008, and a decrease of 10.8 billion kWh from September 2007, a 3.2 percent decrease. Year-to-date 2008, sales were 2,872.0 billion kWh, corresponding to a 0.7 percent increase over the same period in 2007.

Revenue: Total retail revenues in September 2008 were \$33.6 billion, reflecting an increase in revenue of 5.7 percent from September 2007 and yet a \$4.2 billion decrease from August 2008 reflecting continued higher prices of fossil fuels and slowing demand, respectively. Simply stated, the revenue increase year over year was related to higher fuel costs while seasonality influenced demand from month to month, August to September. For September 2008, residential sector retail revenues decreased 0.2 percent from September 2007, while the commercial and industrial sector retail revenues increased by 10.0 and 11.4 percent respectively reflecting the changes in weather which affect the residential consumer while yet higher fossil fuel prices affect commercial and industrial users more than weather. Year-to-date 2008, retail revenue increased to \$281.2 billion, a 7.5-percent increase over the same period in 2007.

Average Retail Price: For the month, average residential retail prices slipped slightly to 11.94 cents per kWh from 12.1 cents per kWh in August 2008 although 9.1 percent higher than September 2007 when the price was 10.94 cents per kWh. The September 2008 average commercial retail price was 10.77 cents per kWh, a 9.0 percent increase from September 2007. The average industrial retail price for September 2008 rose to 7.36 cents per kWh, a 12.4-percent increase over the September 2007 value. Year-to-date September 2008 residential prices have increased by 6.0 percent when compared to the same period last year and the year-to-date average retail prices for all sectors increased to 9.79 cents per kWh, or 6.6 percent over the same period. (Figure 4).

Figure 4: Average Retail Price of Electricity to Ultimate Customers by End-Use Sector, Year-to-Date through September 2008 and 2007

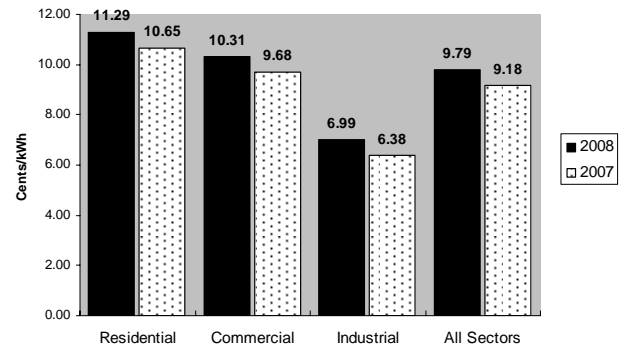


Table ES1.A. Total Electric Power Industry Summary Statistics, 2008 and 2007

September											
Net Generation and Consumption of Fuels											
Items	Total (All Sectors)			Electric Power Sector				Commercial		Industrial	
				Electric Utilities		Independent Power Producers					
	Sep 2008	Sep 2007	% Change	Sep 2008	Sep 2007	Sep 2008	Sep 2007	Sep 2008	Sep 2007	Sep 2008	Sep 2007
Net Generation (thousand megawatthours)											
Coal ¹	162,207	169,839	-4.5	119,792	126,029	40,808	42,278	112	104	1,494	1,428
Petroleum Liquids ²	2,994	3,648	-17.9	2,295	2,818	542	695	8	8	150	126
Petroleum Coke.....	1,119	1,256	-10.9	481	552	538	572	*	1	101	132
Natural Gas ³	77,490	87,741	-11.7	28,488	30,886	43,497	50,075	352	379	5,153	6,402
Other Gases ⁴	791	1,266	-37.5	1	9	186	302	--	2	604	954
Nuclear.....	67,003	67,582	-.9	34,885	36,821	32,118	30,761	--	--	--	--
Hydroelectric Conventional.....	16,530	14,667	12.7	15,014	13,461	1,433	1,099	1	*	82	107
Other Renewables.....	8,172	8,618	-5.2	634	715	5,106	5,340	135	134	2,297	2,431
Wood ⁵	3,167	3,247	-2.5	157	169	763	702	2	2	2,245	2,374
Waste ⁶	1,303	1,432	-9.1	83	100	1,034	1,144	133	132	52	57
Geothermal.....	1,225	1,230	-.4	101	95	1,124	1,135	--	--	--	--
Solar/PV ⁷	86	68	26.5	1	1	85	67	--	--	--	--
Wind.....	2,391	2,641	-9.5	291	350	2,100	2,291	--	--	--	--
Hydroelectric Pumped Storage.....	-513	-756	32.1	-409	-605	-104	-151	--	--	--	--
Other Energy Sources ⁸	791	1,119	-29.3	39	50	499	530	69	62	184	478
All Energy Sources.....	336,584	354,981	-5.2	201,218	210,734	124,624	131,500	678	690	10,064	12,057
Consumption of Fossil Fuels for Electricity Generation											
Coal (1000 tons) ¹	86,173	88,807	-3.0	62,579	64,620	22,892	23,415	33	63	669	710
Petroleum Liquids (1000 bbls) ²	5,052	6,372	-20.7	3,980	4,825	851	1,259	12	17	209	271
Petroleum Coke (1000 tons).....	426	517	-17.6	191	223	208	241	*	1	27	53
Natural Gas (1000 Mcf) ³	622,656	736,495	-15.5	246,821	272,220	333,394	397,353	3,001	4,165	39,440	62,758
Consumption of Fossil Fuels for Useful Thermal Output											
Coal (1000 tons) ¹	1,831	1,319	38.9	--	--	371	110	141	80	1,319	1,128
Petroleum Liquids (1000 bbls) ²	609	575	5.9	--	--	132	41	14	12	463	522
Petroleum Coke (1000 tons).....	64	87	-25.8	--	--	8	1	*	1	56	84
Natural Gas (1000 Mcf) ³	55,626	59,773	-6.9	--	--	21,742	9,413	1,786	3,830	32,098	46,530
Consumption of Fossil Fuels for Electricity Generation and Useful Thermal Output											
Coal (1000 tons) ¹	88,004	90,126	-2.4	62,579	64,620	23,263	23,524	175	143	1,987	1,839
Petroleum Liquids (1000 bbls) ²	5,661	6,947	-18.5	3,980	4,825	982	1,300	26	28	672	793
Petroleum Coke (1000 tons).....	490	604	-18.8	191	223	217	242	*	2	83	137
Natural Gas (1000 Mcf) ³	678,282	796,269	-14.8	246,821	272,220	355,135	406,766	4,788	7,995	71,538	109,288
Fuel Stocks (end-of-month)											
Coal (1000 tons) ⁹	147,534	146,535	.7	114,094	115,321	30,854	28,570	386	399	2,199	2,246
Petroleum Liquids (1000 bbls) ²	43,607	44,973	-3.0	26,575	27,528	13,135	15,968	340	229	3,557	1,249
Petroleum Coke (1000 tons).....	1,074	666	61.3	398	290	362	256	*	*	314	121

Retail Sales, Retail Revenue and Average Retail Price per Kilowatthour

Items	Total U.S. Electric Power Industry								
	Retail Sales (Million kWh) ¹⁰			Retail Revenue (Million Dollars)			Average Retail Price (Cents/kWh)		
	Sep 2008	Sep 2007	% Change	Sep 2008	Sep 2007	% Change	Sep 2008	Sep 2007	% Change
Residential.....	118,343	129,475	-8.6	14,133	14,167	-.2	11.94	10.94	9.1
Commercial ¹¹	121,521	120,415	.9	13,087	11,902	10.0	10.77	9.88	9.0
Industrial ¹¹	84,899	85,675	-.9	6,249	5,608	11.4	7.36	6.55	12.4
Transportation ¹¹	625	648	-3.6	82	69	18.9	13.16	10.67	23.3
All Sectors.....	325,388	336,214	-3.2	33,550	31,746	5.7	10.31	9.44	9.2

¹ Anthracite, bituminous, subbituminous, lignite, waste coal, and coal synfuel.

² Distillate fuel oil, residual fuel oil, jet fuel, and kerosene.

³ Natural gas includes a small amount of supplemental gaseous fuels that cannot be identified separately.

⁴ Blast furnace gas, propane gas, and other manufactured and waste gases derived from fossil fuels.

⁵ Wood, black liquor, and other wood waste.

⁶ Biogenic municipal solid waste, landfill gas, sludge waste, agriculture byproducts, and other biomass.

⁷ Solar thermal and photovoltaic energy.

⁸ Non-biogenic municipal solid waste, batteries, chemicals, hydrogen, pitch, purchased steam, sulfur, tire-derived fuel, and miscellaneous technologies.

⁹ Anthracite, bituminous, subbituminous, coal synfuel, and lignite; excludes waste coal.

¹⁰ Retail sales and net generation may not correspond exactly for a particular month for a variety of reasons (e.g., sales data may include imported electricity). Net generation is for the calendar month while retail sales and associated revenue accumulate from bills collected for periods of time (28 to 35 days) that vary dependent upon customer class and consumption occurring in and outside the calendar month.

¹¹ See Technical notes for additional information on the Commercial, Industrial, and Transportation sectors.

* = Value is less than half of the smallest unit of measure (e.g., for values with no decimals, the smallest unit is "1" then values under 0.5 are shown as "**").

Notes: • Beginning with the collection of Form EIA-923 in January 2008, the methodology to allocate total fuel consumption for electricity generation and consumption for useful thermal output was changed. See the technical notes (Appendix C) for further information. • Beginning with 2001 data, non-biogenic municipal solid waste and tire-derived fuels are reclassified as non-renewable energy sources and included in "Other". Biogenic municipal solid waste is included in "Other Renewables." • Values for 2007 and 2008 are preliminary and are estimates based on samples. - See Technical Notes for a discussion of the sample designs. • Totals may not equal sum of components because of independent rounding. • Percent difference is calculated before rounding. • Monetary values are expressed in nominal terms.

Sources: Energy Information Administration, Form EIA-826, "Monthly Electric Sales and Revenue With State Distributions Report;" Form EIA-906, "Power Plant Report;" Form EIA-920, "Combined Heat and Power Plant Report;" Beginning with 2008 data, the Form EIA-923, "Power Plant Operations Report," replaced the following: Form EIA-906, "Power Plant Report;" Form EIA-920, "Combined Heat and Power Plant Report;" Form EIA-423, "Monthly Cost and Quality of Fuels for Electric Plants Report;" and Federal Energy Regulatory Commission, FERC Form 423, "Monthly Report of Cost and Quality of Fuels for Electric Plants."

Table ES1.B. Total Electric Power Industry Summary Statistics, Year-to-Date 2008 and 2007

January through September											
Net Generation and Consumption of Fuels											
Items	Total (All Sectors)			Electric Power Sector				Commercial		Industrial	
				Electric Utilities		Independent Power Producers					
	2008	2007	% Change	2008	2007	2008	2007	2008	2007	2008	2007
Net Generation (thousand megawatthours)											
Coal ¹	1,516,211	1,523,714	-.5	1,121,470	1,125,422	380,354	384,287	1,199	954	13,188	13,051
Petroleum Liquids ²	24,434	41,671	-41.4	17,071	27,781	6,170	11,898	76	155	1,117	1,837
Petroleum Coke.....	10,221	12,131	-15.7	4,311	5,642	4,958	5,174	3	6	948	1,310
Natural Gas ³	674,250	688,035	-2.0	241,790	240,336	373,616	388,705	3,263	3,400	55,581	55,594
Other Gases ⁴	11,795	11,923	-1.1	18	54	3,866	2,896	--	16	7,911	8,956
Nuclear.....	606,491	607,846	-2	320,913	336,198	285,578	271,648	--	--	--	--
Hydroelectric Conventional.....	209,702	199,261	5.2	190,634	181,560	17,337	15,760	61	59	1,671	1,882
Other Renewables.....	85,438	76,567	11.6	6,798	6,358	56,237	47,565	1,262	1,222	21,141	21,421
Wood ⁵	28,602	28,729	-4	1,415	1,505	6,584	6,263	14	15	20,590	20,946
Waste ⁶	12,525	12,723	-1.6	842	894	9,883	10,146	1,248	1,208	551	475
Geothermal.....	10,967	11,060	-8	889	840	10,078	10,220	--	--	--	--
Solar/PV ⁷	717	532	34.6	12	10	704	523	--	--	--	--
Wind.....	32,627	23,522	38.7	3,640	3,109	28,987	20,413	--	--	--	--
Hydroelectric Pumped Storage.....	-4,668	-4,922	5.2	-3,820	-3,899	-848	-1,023	--	--	--	--
Other Energy Sources ⁸	8,276	10,388	-20.3	451	508	4,997	4,830	570	575	2,258	4,475
All Energy Sources.....	3,142,149	3,166,614	-.8	1,899,651	1,919,960	1,132,265	1,131,740	6,435	6,388	103,815	108,526
Consumption of Fossil Fuels for Electricity Generation											
Coal (1000 tons) ¹	793,576	793,934	.0	579,208	577,696	208,066	210,043	371	551	5,930	5,643
Petroleum Liquids (1000 bbls) ²	41,945	72,400	-42.1	29,802	47,862	10,400	20,748	127	308	1,616	3,483
Petroleum Coke (1000 tons).....	3,997	4,773	-16.3	1,745	2,143	2,002	2,153	1	3	250	474
Natural Gas (1000 Mcf) ³	5,396,069	5,790,061	-6.8	2,103,287	2,113,610	2,839,257	3,093,672	28,147	37,333	425,378	545,446
Consumption of Fossil Fuels for Useful Thermal Output											
Coal (1000 tons) ¹	16,237	13,621	19.2	--	--	3,236	1,089	1,250	874	11,751	11,658
Petroleum Liquids (1000 bbls) ²	5,105	8,231	-38.0	--	--	605	155	185	290	4,315	7,786
Petroleum Coke (1000 tons).....	823	784	4.9	--	--	93	3	4	5	725	777
Natural Gas (1000 Mcf) ³	587,664	500,635	17.4	--	--	229,754	119,702	19,012	25,379	338,898	355,553
Consumption of Fossil Fuels for Electricity Generation and Useful Thermal Output											
Coal (1000 tons) ¹	809,813	807,554	.3	579,208	577,696	211,302	211,132	1,622	1,425	17,681	17,301
Petroleum Liquids (1000 bbls) ²	47,050	80,631	-41.6	29,802	47,862	11,004	20,903	312	598	5,931	11,268
Petroleum Coke (1000 tons).....	4,820	5,557	-13.3	1,745	2,143	2,095	2,156	5	8	975	1,251
Natural Gas (1000 Mcf) ³	5,983,733	6,290,696	-4.9	2,103,287	2,113,610	3,069,011	3,213,375	47,159	62,712	764,277	900,999

Retail Sales, Retail Revenue and Average Retail Price per Kilowatthour

Items	Total U.S. Electric Power Industry								
	Retail Sales (Million kWh) ⁹			Retail Revenue (Million Dollars)			Average Retail Price (Cents/kWh)		
	2008	2007	% Change	2008	2007	% Change	2008	2007	% Change
Residential.....	1,069,051	1,074,882	-.5	120,671	114,455	5.4	11.29	10.65	6.0
Commercial ¹⁰	1,031,729	1,016,602	1.5	106,407	98,451	8.1	10.31	9.68	6.5
Industrial ¹⁰	765,484	753,291	1.6	53,477	48,039	11.3	6.99	6.38	9.6
Transportation ¹⁰	5,734	5,865	-2.2	659	618	6.6	11.49	10.54	9.0
All Sectors.....	2,871,998	2,850,639	.7	281,214	261,564	7.5	9.79	9.18	6.6

¹ Anthracite, bituminous, subbituminous, lignite, waste coal, and coal synfuel.

² Distillate fuel oil, residual fuel oil, jet fuel, kerosene, and waste oil.

³ Natural gas includes a small amount of supplemental gaseous fuels that cannot be identified separately.

⁴ Blast furnace gas, propane gas, and other manufactured and waste gases derived from fossil fuels.

⁵ Wood, black liquor, and other wood waste.

⁶ Biogenic municipal solid waste, landfill gas, sludge waste, agriculture byproducts, and other biomass.

⁷ Solar thermal and photovoltaic energy.

⁸ Non-biogenic municipal solid waste, batteries, chemicals, hydrogen, pitch, purchased steam, sulfur, tire-derived fuel, and miscellaneous technologies.

⁹ Retail sales and net generation may not correspond exactly for a particular month for a variety of reasons (e.g., sales data may include imported electricity). Net generation is for the calendar month while retail sales and associated revenue accumulate from bills collected for periods of time (28 to 35 days) that vary dependent upon customer class and consumption occurring in and outside the calendar month.

¹⁰ See Technical notes for additional information on the Commercial, Industrial, and Transportation sectors.

Notes: • Beginning with the collection of Form EIA-923 in January 2008, the methodology to allocate total fuel consumption for electricity generation and consumption for useful thermal output was changed. See the technical notes (Appendix C) for further information. • Beginning with 2001 data, non-biogenic municipal solid waste and tire-derived fuels are reclassified as non-renewable energy sources and included in "Other". Biogenic municipal solid waste is included in "Other Renewables." • Values for 2007 and 2008 are preliminary. Values for January through July 2007 are revised. Values from Forms EIA-826, EIA-906, and EIA-920 for 2007 and values from Form EIA-923 for 2008 are estimates based on samples - see Technical Notes for a discussion of the sample designs. • Totals may not equal sum of components because of independent rounding. • Percent difference is calculated before rounding.

Sources: Energy Information Administration, Form EIA-826, "Monthly Electric Sales and Revenue With State Distributions Report;" Form EIA-906, "Power Plant Report;" Form EIA-920, "Combined Heat and Power Plant Report;" Beginning with 2008 data, the Form EIA-923, "Power Plant Operations Report," replaced the following: Form EIA-906, "Power Plant Report;" Form EIA-920, "Combined Heat and Power Plant Report;" Form EIA-423, "Monthly Cost and Quality of Fuels for Electric Plants Report;" and Federal Energy Regulatory Commission, FERC Form 423, "Monthly Report of Cost and Quality of Fuels for Electric Plants."

Table ES2.A. Summary Statistics: Receipts and Cost of Fossil Fuels for the Electric Power Industry by Sector, Physical Units, 2008 and 2007

September										
Total (All Sectors)										
Items	Receipts (physical units)		Cost (dollars/ physical unit)		Number of Plants ¹		Year-to-Date			
							Receipts (physical units)		Cost (dollars/ physical unit)	
	Sep 2008	Sep 2007	Sep 2008	Sep 2007	Sep 2008	Sep 2007	Sep 2008	Sep 2007	Sep 2008	Sep 2007
Coal (1000 tons) ²	89,071	90,019	43.05	35.77	489	479	787,181	804,071	40.45	35.63
Petroleum Liquids (1000 barrels) ³	4,252	6,492	105.36	60.11	438	343	41,878	58,114	105.83	56.09
Petroleum Coke (1000 tons).....	425	490	62.30	45.53	25	23	4,239	4,417	50.97	44.39
Natural Gas (1000 Mcf) ⁴	672,394	713,828	8.10	6.32	1,116	889	5,841,577	5,606,663	10.14	7.27

Electric Utilities										
Items	Receipts (physical units)		Cost (dollars/ physical unit)		Number of Plants		Year-to-Date			
							Receipts (physical units)		Cost (dollars/ physical unit)	
	Sep 2008	Sep 2007	Sep 2008	Sep 2007	Sep 2008	Sep 2007	Sep 2008	Sep 2007	Sep 2008	Sep 2007
Coal (1000 tons) ²	64,531	65,492	43.85	36.34	305	308	566,790	591,453	40.76	36.09
Petroleum Liquids (1000 barrels) ³	3,175	4,931	103.57	57.25	244	220	29,184	37,465	104.35	55.02
Petroleum Coke (1000 tons).....	229	192	66.33	50.49	10	8	2,064	1,974	57.93	51.11
Natural Gas (1000 Mcf) ⁴	244,588	251,606	8.39	6.77	516	329	2,088,416	1,873,698	10.08	7.66

Independent Power Producers										
Items	Receipts (physical units)		Cost (dollars/ physical unit)		Number of Plants		Year-to-Date			
							Receipts (physical units)		Cost (dollars/ physical unit)	
	Sep 2008	Sep 2007	Sep 2008	Sep 2007	Sep 2008	Sep 2007	Sep 2008	Sep 2007	Sep 2008	Sep 2007
Coal (1000 tons) ²	23,273	23,407	39.49	33.37	141	135	209,210	201,537	38.74	33.50
Petroleum Liquids (1000 barrels) ³	696	1,204	116.50	71.89	151	93	9,251	16,335	114.56	60.58
Petroleum Coke (1000 tons).....	151	228	45.69	35.85	12	10	1,695	1,919	34.99	34.85
Natural Gas (1000 Mcf) ⁴	354,372	391,447	7.77	6.08	475	449	3,034,042	3,074,783	10.20	7.06

Commercial Sector										
Items	Receipts (physical units)		Cost (dollars/ physical unit)		Number of Plants		Year-to-Date			
							Receipts (physical units)		Cost (dollars/ physical unit)	
	Sep 2008	Sep 2007	Sep 2008	Sep 2007	Sep 2008	Sep 2007	Sep 2008	Sep 2007	Sep 2008	Sep 2007
Coal (1000 tons) ²	50	43	94.54	66.19	3	3	371	414	71.85	62.69
Petroleum Liquids (1000 barrels) ³	2	1	127.44	93.20	4	3	28	40	118.79	79.96
Petroleum Coke (1000 tons).....	--	--	--	--	--	--	--	--	--	--
Natural Gas (1000 Mcf) ⁴	1,599	1,696	8.79	7.02	8	8	16,053	16,236	10.28	8.20

Industrial Sector										
Items	Receipts (physical units)		Cost (dollars/ physical unit)		Number of Plants		Year-to-Date			
							Receipts (physical units)		Cost (dollars/ physical unit)	
	Sep 2008	Sep 2007	Sep 2008	Sep 2007	Sep 2008	Sep 2007	Sep 2008	Sep 2007	Sep 2008	Sep 2007
Coal (1000 tons) ²	1,217	1,077	66.29	51.65	40	36	10,810	10,667	56.67	49.69
Petroleum Liquids (1000 barrels) ³	380	356	99.83	59.69	39	30	3,416	4,274	94.78	48.04
Petroleum Coke (1000 tons).....	45	69	97.65	63.61	3	5	481	524	77.48	54.06
Natural Gas (1000 Mcf) ⁴	71,835	69,080	8.69	5.96	117	106	703,066	641,945	10.07	7.18

¹ Represents the number of plants for which receipts data were collected for this month. A plant using more than one fuel may be counted multiple times. The total numbers of electric power plants using coal, petroleum liquids, petroleum coke, and natural gas in the country as of January 1, 2007 are: 620; 1,542; 46; and 1,838 respectively.

² Anthracite, bituminous, subbituminous, lignite, waste coal, and coal synfuel.

³ Distillate fuel oil, residual fuel oil, jet fuel, kerosene, and waste oil.

⁴ Natural gas includes a small amount of supplemental gaseous fuels that cannot be identified separately.

Notes: • Due to different reporting requirements between the Form EIA-923 and historical FERC Form 423, the receipts data from 2008 and on are not directly comparable to prior years. For more information, please see the Technical Notes in Appendix C. • Values for 2007 and 2008 are preliminary. Values for January through July 2007 are revised. • Mcf = thousand cubic feet.

Sources: Energy Information Administration, Form EIA-423, "Monthly Cost and Quality of Fuels for Electric Plants Report;" Federal Energy Regulatory Commission, FERC Form 423, "Monthly Report of Cost and Quality of Fuels for Electric Plants;" Beginning with 2008 data, the Form EIA-923, "Power Plant Operations Report," replaced the following: Form EIA-906, "Power Plant Report;" Form EIA-920, "Combined Heat and Power Plant Report;" Form EIA-423, "Monthly Cost and Quality of Fuels for Electric Plants Report;" and Federal Energy Regulatory Commission, FERC Form 423, "Monthly Report of Cost and Quality of Fuels for Electric Plants."

Table ES2.B. Summary Statistics: Receipts and Cost of Fossil Fuels for the Electric Power Industry by Sector, Btus, 2008 and 2007

September										
Total (All Sectors)										
Items	Receipts (billion Btu)		Cost (dollars/million Btu)		Number of Plants ¹		Year-to-Date			
							Receipts (billion Btu)		Cost (dollars/million Btu)	
	September 2008	September 2007	September 2008	September 2007	September 2008	September 2007	September 2008	September 2007	September 2008	September 2007
Coal ²	1,761,901	1,808,813	2.18	1.78	489	479	15,646,713	16,190,584	2.04	1.77
Petroleum										
Liquids ³	26,384	40,864	16.98	9.55	438	343	259,889	364,478	17.05	8.94
Petroleum Coke	12,184	13,997	2.17	1.59	25	23	120,443	125,664	1.79	1.56
Natural Gas ⁴	691,820	733,683	7.87	6.14	1,116	889	5,998,096	5,761,291	9.88	7.08
Fossil Fuels.....	2,492,288	2,597,357	3.91	3.13	1,463	1,221	22,025,141	22,442,016	4.35	3.25

Electric Utilities										
Items	Receipts (billion Btu)		Cost (dollars/million Btu)		Number of Plants		Year-to-Date			
							Receipts (billion Btu)		Cost (dollars/million Btu)	
	September 2008	September 2007	September 2008	September 2007	September 2008	September 2007	September 2008	September 2007	September 2008	September 2007
Coal ²	1,293,911	1,329,073	2.19	1.79	305	308	11,403,633	12,028,735	2.02	1.78
Petroleum										
Liquids ³	19,949	31,362	16.48	9.00	244	220	182,742	237,717	16.67	8.67
Petroleum Coke	6,595	5,450	2.31	1.78	10	8	58,720	55,951	2.04	1.80
Natural Gas ⁴	251,910	258,674	8.15	6.58	516	329	2,143,331	1,925,586	9.82	7.45
Fossil Fuels.....	1,572,364	1,624,560	3.32	2.69	720	528	13,788,426	14,247,988	3.43	2.66

Independent Power Producers										
Items	Receipts (billion Btu)		Cost (dollars/million Btu)		Number of Plants		Year-to-Date			
							Receipts (billion Btu)		Cost (dollars/million Btu)	
	September 2008	September 2007	September 2008	September 2007	September 2008	September 2007	September 2008	September 2007	September 2008	September 2007
Coal ²	440,112	454,375	2.09	1.72	141	135	3,995,498	3,912,432	2.03	1.72
Petroleum										
Liquids ³	4,113	7,284	19.70	11.88	151	93	55,682	100,614	19.03	9.83
Petroleum Coke	4,318	6,555	1.60	1.25	12	10	48,157	54,947	1.23	1.22
Natural Gas ⁴	364,488	402,037	7.56	5.92	475	449	3,114,842	3,157,719	9.93	6.87
Fossil Fuels.....	813,030	870,252	4.63	3.74	602	567	7,214,179	7,225,712	5.57	4.08

Commercial Sector										
Items	Receipts (billion Btu)		Cost (dollars/million Btu)		Number of Plants		Year-to-Date			
							Receipts (billion Btu)		Cost (dollars/million Btu)	
	September 2008	September 2007	September 2008	September 2007	September 2008	September 2007	September 2008	September 2007	September 2008	September 2007
Coal ²	1,203	1,019	3.91	2.78	3	3	8,811	9,703	3.03	2.67
Petroleum										
Liquids ³	12	7	21.87	15.94	4	3	161	235	20.45	13.70
Petroleum Coke	--	--	--	--	--	--	--	--	--	--
Natural Gas ⁴	1,634	1,736	8.60	6.86	8	8	16,487	16,645	10.01	8.00
Fossil Fuels.....	2,849	2,763	6.68	5.37	11	9	25,459	26,582	7.66	6.11

Industrial Sector										
Items	Receipts (billion Btu)		Cost (dollars/million Btu)		Number of Plants		Year-to-Date			
							Receipts (billion Btu)		Cost (dollars/million Btu)	
	September 2008	September 2007	September 2008	September 2007	September 2008	September 2007	September 2008	September 2007	September 2008	September 2007
Coal ²	26,675	24,346	3.02	2.29	40	36	238,771	239,715	2.56	2.21
Petroleum										
Liquids ³	2,310	2,210	16.42	9.62	39	30	21,304	25,911	15.20	7.92
Petroleum Coke	1,271	1,992	3.44	2.22	3	5	13,566	14,767	2.74	1.92
Natural Gas ⁴	73,788	71,234	8.46	5.78	117	106	723,436	661,341	9.78	6.97
Fossil Fuels.....	104,045	99,782	7.18	4.94	130	123	997,077	941,734	8.08	5.71

¹ Represents the number of plants for which receipts data were collected for this month. The total number of fossil fuel plants is not a sum of the figures above it because a plant that receives two or more different fuels is only counted once. The total number of electric power plants using coal, petroleum liquids, petroleum coke, and natural gas in the country as of January 1, 2007 are: 620; 1,542; 46; and 1,838 respectively.

² Anthracite, bituminous, subbituminous, lignite, waste coal, and coal synfuel.

³ Distillate fuel oil, residual fuel oil, jet fuel, kerosene, and waste oil.

⁴ Natural gas includes a small amount of supplemental gaseous fuels that cannot be identified separately.

Notes: • Due to different reporting requirements between the Form EIA-923 and historical FERC Form 423, the receipts data from 2008 and on are not directly comparable to prior years. For more information, please see the Technical Notes in Appendix C. • Values for 2007 and 2008 are preliminary. Values for January through July 2007 are revised.

Sources: Energy Information Administration, Form EIA-423, "Monthly Cost and Quality of Fuels for Electric Plants Report;" Federal Energy Regulatory Commission, FERC Form 423, "Monthly Report of Cost and Quality of Fuels for Electric Plants;" Beginning with 2008 data, the Form EIA-923, "Power Plant Operations Report," replaced the

following: Form EIA-906, "Power Plant Report;" Form EIA-920, "Combined Heat and Power Plant Report;" Form EIA-423, "Monthly Cost and Quality of Fuels for Electric Plants Report;" and Federal Energy Regulatory Commission, FERC Form 423, "Monthly Report of Cost and Quality of Fuels for Electric Plants."

Table ES3. New and Planned U.S. Electric Generating Units by Operating Company, Plant and Month, 2008 - 2009

Year/Month/Company	Producer Type	Plant	State	Plant ID	Generating Unit ID	Net Summer Capacity (megawatts) ¹	Energy Source	Prime Mover
New Units 2008								
January								
Acciona Wind Energy USA LLC	IPP	Tatanka Wind Power LLC	ND	56669	TW1	180.0	WND	WT
BC Energy LLC	IPP	BC Energy LLC	MN	56624	1	4.0	WND	WT
Black Hills Power Inc	Elect. Utility	Wygen 2	WY	56319	1	89.0	SUB	ST
City of Columbus	Elect. Utility	Dodge Park 0007	OH	56423	7	2.0	DFO	IC
City of Columbus	Elect. Utility	ST- 1A 0006	OH	56422	6	1.3	DFO	IC
City of Columbus	Elect. Utility	ST-8 0005	OH	56421	5	2.0	DFO	IC
FPL Energy Oliver County Wind II LLC	IPP	FPL Energy Oliver Wind II LLC	ND	56573	2	48.0	WND	WT
Harvest Windfarm LLC	IPP	Harvest Windfarm LLC	MI	56635	1	52.8	WND	WT
Iberdrola Renewable Energies USA	IPP	Top of Iowa Windfarm II	IA	56383	TOI2	80.0	WND	WT
John Deere Wind 4 LLC	IPP	JD Wind 4 LLC	TX	56560	JDW4	79.8	WND	WT
K&D Energy LLC	IPP	K&D Energy LLC	MN	56626	1	4.0	WND	WT
KC Energy LLC	IPP	KC Energy LLC	MN	56625	1	4.0	WND	WT
KSS Turbines LLC	IPP	KSS Turbines LLC	MN	56627	1	4.0	WND	WT
Mint Farm Energy Center LLC	IPP	Mint Farm Generation LLC	WA	55700	1STG	114.4	NG	CA
Mint Farm Energy Center LLC	IPP	Mint Farm Generation LLC	WA	55700	CTG1	160.0	NG	CT
P P M Energy Inc	IPP	MinnDakota Wind LLC	SD	56459	2	150.0	WND	WT
PacificCorp	Elect. Utility	Marengo Wind Plant	WA	56466	2	70.2	WND	WT
Prairie Wind Power LLC	IPP	Prairie Wind Power LLC	MN	56628	1	4.0	WND	WT
Smoky Hills Wind Farm LLC	IPP	Smoky Hills Windfarm	KS	56488	1	100.8	WND	WT
Southwestern Bell Telephone Co.	Commercial	Southwestern Bell Telephone	MO	54858	E/G5	2.7	DFO	IC
US Geothermal Inc	IPP	Raft River Geothermal Power Plant	ID	56317	1	16.7	GEO	ST
Wind Capital Holdings LLC	IPP	Wind Capital Holdings LLC	MO	56555	1	56.7	WND	WT
February								
Airtricity Inc	IPP	Airtricity Champion Wind Farm LLC	TX	56592	CH1	126.5	WND	WT
Airtricity Inc	IPP	Airtricity Roscoe Wind Farm LLC	TX	56593	RO1	209.0	WND	WT
Idaho Power Co	Elect. Utility	Evander Andrews Power Complex	ID	7953	1	146.9	NG	GT
Industrial Power Generating Company LLC	IPP	Pine Grove	PA	56690	1	.3	LFG	IC
Industrial Power Generating Company LLC	IPP	Pine Grove	PA	56690	10	.3	LFG	IC
Industrial Power Generating Company LLC	IPP	Pine Grove	PA	56690	11	.3	LFG	IC
Industrial Power Generating Company LLC	IPP	Pine Grove	PA	56690	12	.3	LFG	IC
Industrial Power Generating Company LLC	IPP	Pine Grove	PA	56690	13	.3	LFG	IC
Industrial Power Generating Company LLC	IPP	Pine Grove	PA	56690	14	.3	LFG	IC
Industrial Power Generating Company LLC	IPP	Pine Grove	PA	56690	15	.3	LFG	IC
Industrial Power Generating Company LLC	IPP	Pine Grove	PA	56690	16	.3	LFG	IC
Industrial Power Generating Company LLC	IPP	Pine Grove	PA	56690	17	.3	LFG	IC
Industrial Power Generating Company LLC	IPP	Pine Grove	PA	56690	18	.3	LFG	IC
Industrial Power Generating Company LLC	IPP	Pine Grove	PA	56690	2	.3	LFG	IC
Industrial Power Generating Company LLC	IPP	Pine Grove	PA	56690	3	.3	LFG	IC
Industrial Power Generating Company LLC	IPP	Pine Grove	PA	56690	4	.3	LFG	IC
Industrial Power Generating Company LLC	IPP	Pine Grove	PA	56690	5	.3	LFG	IC
Industrial Power Generating Company LLC	IPP	Pine Grove	PA	56690	6	.3	LFG	IC
Industrial Power Generating Company LLC	IPP	Pine Grove	PA	56690	7	.3	LFG	IC
Industrial Power Generating Company LLC	IPP	Pine Grove	PA	56690	8	.3	LFG	IC
Industrial Power Generating Company LLC	IPP	Pine Grove	PA	56690	9	.3	LFG	IC
Invenergy Services LLC	IPP	Stanton Wind Energy LLC	TX	56644	1	120.0	WND	WT
Loess Hills Farm LLC	IPP	Loess Hills Wind Farm LLC	MO	56538	1	5.0	WND	WT
Madison Gas & Electric Co	Elect. Utility	Top of Iowa Windfarm III	IA	56386	TOI3	29.7	WND	WT
Old Trail Wind Farm LLC	CHP	Old Trail Wind Farm	IL	56614	2	198.0	WND	WT
Ormat Nevada Inc	IPP	Galena 3	NV	56541	GEN1	8.5	GEO	BT
Ormat Nevada Inc	IPP	Galena 3	NV	56541	GEN2	4.2	GEO	BT
Public Service Co of Oklahoma	Elect. Utility	Southwestern	OK	2964	4	73.5	NG	GT
Public Service Co of Oklahoma	Elect. Utility	Southwestern	OK	2964	5	73.5	NG	GT
WM Renewable Energy LLC	IPP	Bethel	VA	56531	GEN1	.8	LFG	IC
WM Renewable Energy LLC	IPP	Bethel	VA	56531	GEN2	.8	LFG	IC
WM Renewable Energy LLC	IPP	Bethel	VA	56531	GEN3	.8	LFG	IC
WM Renewable Energy LLC	IPP	Bethel	VA	56531	GEN4	.8	LFG	IC
WM Renewable Energy LLC	IPP	Bethel	VA	56531	GEN5	.8	LFG	IC
WM Renewable Energy LLC	IPP	Bethel	VA	56531	GEN6	.8	LFG	IC
WM Renewable Energy LLC	IPP	Five Oaks Gas Recovery	IL	56529	GEN1	.8	LFG	IC
WM Renewable Energy LLC	IPP	Five Oaks Gas Recovery	IL	56529	GEN2	.8	LFG	IC
WM Renewable Energy LLC	IPP	Five Oaks Gas Recovery	IL	56529	GEN3	.8	LFG	IC
WM Renewable Energy LLC	IPP	Five Oaks Gas Recovery	IL	56529	GEN4	.8	LFG	IC

**Table ES3. New and Planned U.S. Electric Generating Units by Operating Company, Plant and Month, 2008 - 2009
(Continued)**

Year/Month/Company	Producer Type	Plant	State	Plant ID	Generating Unit ID	Net Summer Capacity (megawatts) ¹	Energy Source	Prime Mover
New Units 2008								
March								
Bethlehem Renewable Energy LLC	IPP	Bethlehem Renewable Energy LLC	PA	56572	1	4.7	LFG	GT
Bio-Energy Partners	IPP	High Acres Gas Recovery	NY	50568	GEN5	1.6	LFG	IC
Bio-Energy Partners	IPP	High Acres Gas Recovery	NY	50568	GEN6	1.6	LFG	IC
Bio-Energy Partners	IPP	High Acres Gas Recovery	NY	50568	GEN7	1.6	LFG	IC
Bio-Energy Partners	IPP	High Acres Gas Recovery	NY	50568	GEN8	1.6	LFG	IC
Shell Wind Energy Inc.	IPP	NedPower Mount Storm	WV	56495	MS1	164.0	WND	WT
April								
Capricorn Ridge Wind LLC	IPP	Capricorn Ridge Wind LLC	TX	56763	3	186.0	WND	WT
Cow Branch Wind Power LLC	IPP	Cow Branch Wind Power LLC	MO	56536	1	50.4	WND	WT
Edison Mission Energy	IPP	Forward Windpower LLC	PA	56699	1	29.4	WND	WT
Edison Mission Energy	IPP	Goat Wind LP	TX	56754	1	80.0	WND	WT
Invenergy Cannon Falls LLC	IPP	Cannon Falls Energy Center	MN	56241	UNT1	169.2	NG	GT
Invenergy Cannon Falls LLC	IPP	Cannon Falls Energy Center	MN	56241	UNT2	169.2	NG	GT
Madison Paper Industries Inc.	Industrial	Anson Abenaki Hydros	ME	10186	AB6	2.9	WAT	HY
MidAmerican Energy Co.	Elect. Utility	Charles City	IA	56677	CCWF	75.0	WND	WT
South Oak Hospital	Commercial	South Oaks Hospital	NY	50136	CG1	.2	NG	IC
South Oak Hospital	Commercial	South Oaks Hospital	NY	50136	CG2	.2	NG	IC
South Oak Hospital	Commercial	South Oaks Hospital	NY	50136	CG3	.2	NG	IC
South Oak Hospital	Commercial	South Oaks Hospital	NY	50136	CG4	.2	NG	IC
South Oak Hospital	Commercial	South Oaks Hospital	NY	50136	CG5	.2	NG	IC
May								
Capricorn Ridge Wind LLC	IPP	Capricorn Ridge Wind LLC	TX	56763	4	112.5	WND	WT
Edison Mission Energy	IPP	OWF Five LLC	MN	56759	1	2.5	WND	WT
Edison Mission Energy	IPP	OWF Four LLC	MN	56758	1	2.5	WND	WT
Edison Mission Energy	IPP	OWF Seven LLC	MN	56761	1	2.5	WND	WT
Edison Mission Energy	IPP	OWF Six LLC	MN	56760	1	2.5	WND	WT
Edison Mission Energy	IPP	OWF Two LLC	MN	56756	1	2.5	WND	WT
Edison Mission Energy	IPP	Odin Wind Farm	MN	56755	1	2.5	WND	WT
Florida Municipal Power Agency	Elect. Utility	Treasure Coast Energy Center	FL	56400	CC1	273.5	NG	CC
Invenergy LLC	Elect. Utility	Grays Harbor Energy Facility	WA	7999	CT1	150.5	NG	CT
Invenergy LLC	Elect. Utility	Grays Harbor Energy Facility	WA	7999	CT2	150.5	NG	CT
Invenergy LLC	Elect. Utility	Grays Harbor Energy Facility	WA	7999	ST1	258.0	NG	CA
Noble Wind Operations LLC	IPP	Noble Bliss Windpark LLC	NY	56620	1	100.5	WND	WT
Noble Wind Operations LLC	IPP	Noble Clinton Windpark LLC	NY	56618	1	100.5	WND	WT
Noble Wind Operations LLC	IPP	Noble Ellenburg Windpark LLC	NY	56619	1	81.0	WND	WT
Northern States Power Co.	Elect. Utility	High Bridge	MN	1912	7	169.2	NG	CC
Northern States Power Co.	Elect. Utility	High Bridge	MN	1912	8	169.2	NG	CC
Northern States Power Co.	Elect. Utility	High Bridge	MN	1912	9	215.0	NG	CC
Plains End Operating Services LLC	IPP	Plains End II LLC	CO	56516	2G01	5.6	NG	IC
Plains End Operating Services LLC	IPP	Plains End II LLC	CO	56516	2G02	5.6	NG	IC
Plains End Operating Services LLC	IPP	Plains End II LLC	CO	56516	2G03	5.6	NG	IC
Plains End Operating Services LLC	IPP	Plains End II LLC	CO	56516	2G04	5.6	NG	IC
Plains End Operating Services LLC	IPP	Plains End II LLC	CO	56516	2G05	5.6	NG	IC
Plains End Operating Services LLC	IPP	Plains End II LLC	CO	56516	2G06	5.6	NG	IC
Plains End Operating Services LLC	IPP	Plains End II LLC	CO	56516	2G07	5.6	NG	IC
Plains End Operating Services LLC	IPP	Plains End II LLC	CO	56516	2G08	5.6	NG	IC
Plains End Operating Services LLC	IPP	Plains End II LLC	CO	56516	2G09	5.6	NG	IC
Plains End Operating Services LLC	IPP	Plains End II LLC	CO	56516	2G10	5.6	NG	IC
Plains End Operating Services LLC	IPP	Plains End II LLC	CO	56516	2G11	5.6	NG	IC
Plains End Operating Services LLC	IPP	Plains End II LLC	CO	56516	2G12	5.6	NG	IC
Plains End Operating Services LLC	IPP	Plains End II LLC	CO	56516	2G13	5.6	NG	IC
Plains End Operating Services LLC	IPP	Plains End II LLC	CO	56516	2G14	5.6	NG	IC
Southern Power Co.	IPP	H Allen Franklin Combined Cycle	AL	7710	CT3A	174.7	NG	CT
Southern Power Co.	IPP	H Allen Franklin Combined Cycle	AL	7710	CT3B	174.7	NG	CT
Southern Power Co.	IPP	H Allen Franklin Combined Cycle	AL	7710	ST3	242.4	NG	CA
Unisource Energy Development Company	IPP	Black Mountain Generating Station	AZ	56482	1	40.8	NG	GT
Unisource Energy Development Company	IPP	Black Mountain Generating Station	AZ	56482	2	40.8	NG	GT
Valencia Power LLC	IPP	Valencia Energy Facility	NM	55802	CTG1	135.6	NG	GT
Westar Energy Inc.	Elect. Utility	Emporia Energy Center	KS	56502	3	34.0	NG	GT
Westar Energy Inc.	Elect. Utility	Emporia Energy Center	KS	56502	4	34.0	NG	GT
Wisconsin Electric Power Co.	Elect. Utility	Blue Sky Green Field Wind Project	WI	56391	1	145.2	WND	WT
Wisconsin Electric Power Co.	Elect. Utility	Port Washington Generating Station	WI	4040	1CT1	143.6	NG	CT

**Table ES3. New and Planned U.S. Electric Generating Units by Operating Company, Plant and Month, 2008 - 2009
(Continued)**

Year/Month/Company	Producer Type	Plant	State	Plant ID	Generating Unit ID	Net Summer Capacity (megawatts) ¹	Energy Source	Prime Mover
New Units 2008								
Wisconsin Electric Power Co	Elect. Utility	Port Washington Generating Station	WI	4040	1CT2	143.6	NG	CT
Wisconsin Electric Power Co	Elect. Utility	Port Washington Generating Station	WI	4040	ST1	231.3	NG	CA
Year-to-Date Capacity of New Units.....	--	--	--	--	--	6,587.3	--	--
Year-to-Date U.S. Capacity.....	--	--	--	--	--	1,005,424.7	--	--
Planned								
2008.								
June	--	--	--	--	--	3,658		
July	--	--	--	--	--	612		
August	--	--	--	--	--	1,194		
September.....	--	--	--	--	--	163		
October.....	--	--	--	--	--	207		
November.....	--	--	--	--	--	110		
December	--	--	--	--	--	1,656		
2009.								
January	--	--	--	--	--	1,205		
February	--	--	--	--	--	42		
March	--	--	--	--	--	774		
April	--	--	--	--	--	1,837		

¹ Net summer capacity is estimated.

Notes: • See Glossary for definitions. • Totals may not equal sum of components because of independent rounding. • Descriptions for the Energy Source and Prime Mover codes listed in the table can be obtained from the Form EIA-860 instructions at the following link: <http://www.eia.doe.gov/cneaf/electricity/forms/eia860/eia860.pdf>

Source: Energy Information Administration, Form EIA-860, "Annual Electric Generator Report" and Form EIA-860M, "Monthly Update to the Annual Electric Generator Report."

Table ES4. Plants Sold and Transferred in 2006, 2007 and 2008

Seller	Plant	State	EIA Plant ID	Net Summer Capacity (Megawatts)		Transaction Closing Date	Buyer
				Plant Total	Sold or Transferred		
Cincinnati Gas & Electric Co	East Bend	KY	6018	600	414	January 01, 2006	Union Light Heat & Power
Cincinnati Gas & Electric Co	Miami Fort Unit 6	OH	2832	163	163	January 01, 2006	Union Light Heat & Power
Cincinnati Gas & Electric Co	Woodsdale	OH	7158	462	462	January 01, 2006	Union Light Heat & Power
Pinnacle West Capital	Silverhawk	NV	55841	570	428	January 10, 2006	Nevada Power
Interstate Power and Light	Duane Arnold	IA	1060	597	418	January 27, 2006	FPL Energy LLC
National Energy Group	Chula Vista	CA	55538	34	34	January 31, 2006	MMC Energy
National Energy Group	Escondido	CA	55540	34	34	January 31, 2006	MMC Energy
Texas GenCo Holdings	Cedar Bayou	TX	3460	2,258	2,258	February 02, 2006	NRG Energy, Inc.
Texas GenCo Holdings	Deepwater	TX	3461	174	174	February 02, 2006	NRG Energy, Inc.
Texas GenCo Holdings	Greens Bayou	TX	3464	760	760	February 02, 2006	NRG Energy, Inc.
Texas GenCo Holdings	HO Clarke	TX	3465	78	78	February 02, 2006	NRG Energy, Inc.
Texas GenCo Holdings	Limestone	TX	298	1,602	1,602	February 02, 2006	NRG Energy, Inc.
Texas GenCo Holdings	PH Robinson	TX	3466	2,211	2,211	February 02, 2006	NRG Energy, Inc.
Texas GenCo Holdings	Sam Bertron	TX	3468	844	844	February 02, 2006	NRG Energy, Inc.
Texas GenCo Holdings	San Jacinto	TX	7325	162	162	February 02, 2006	NRG Energy, Inc.
Texas GenCo Holdings	South Texas Project	TX	6251	2,560	1,126	February 02, 2006	NRG Energy, Inc.
Texas GenCo Holdings	TH Wharton	TX	3469	1,254	1,254	February 02, 2006	NRG Energy, Inc.
Texas GenCo Holdings	WA Parish	TX	3470	3,653	3,653	February 02, 2006	NRG Energy, Inc.
Texas GenCo Holdings	Webster	TX	3471	387	387	February 02, 2006	NRG Energy, Inc.
Reliant	Astoria	NY	8906	1,290	1,290	February 24, 2006	Madison Dearborn Partners & US Power Gen
Reliant	Gowanus	NY	2494	546	546	February 24, 2006	Madison Dearborn Partners & US Power Gen
Reliant	Narrows	NY	2499	279	279	February 24, 2006	Madison Dearborn Partners & US Power Gen
NRG Energy	Audrain	MO	55234	640	640	March 29, 2006	Ameren
Central Mississippi Generating Company	Attala	MS	55220	500	500	March 31, 2006	Entergy
North American Power Group	San Joaquin Cogen	CA	50062	46	46	April 19, 2006	MDU Resources Group
Duke Energy	Arlington Valley	AZ	55282	580	580	May 05, 2006	LS Power
Duke Energy	Bridgeport Energy	CT	55042	454	304	May 05, 2006	LS Power
Duke Energy	Griffith Energy	AZ	55124	588	294	May 05, 2006	LS Power
Duke Energy	Maine Independence	ME	55068	490	490	May 05, 2006	LS Power
Duke Energy	Morro Bay	CA	259	1,036	1,036	May 05, 2006	LS Power
Duke Energy	Moss Landing	CA	260	2,080	2,080	May 05, 2006	LS Power
Duke Energy	Oakland Power Plant	CA	6211	158	158	May 05, 2006	LS Power
Duke Energy	South Bay	CA	55185	707	707	May 05, 2006	LS Power
Mirant Wichita Falls LP	Mirant Wichita Falls LP	TX	50127	77	77	May 05, 2006	Signal Hill Power LLC
Peoples Energy	Southeast Chicago Energy Project	IL	55281	304	90	May 15, 2006	Exelon
Progress Ventures	DeSoto County Plant	FL	55422	313	313	June 01, 2006	Southern Power
PPL Corporation	Griffith Energy	AZ	55124	588	294	June 30, 2006	LS Power
Sempra Energy Partners	Barney M Davis	TX	4939	697	349	July 10, 2006	Carlyle/Riverstone Global Energy and Pow
Sempra Energy Partners	J L Bates	TX	3438	182	91	July 10, 2006	Carlyle/Riverstone Global Energy and Pow
Sempra Energy Partners	La Palma	TX	3442	255	128	July 10, 2006	Carlyle/Riverstone Global Energy and Pow
Sempra Energy Partners	Laredo	TX	3439	178	89	July 10, 2006	Carlyle/Riverstone Global Energy and Pow
Sempra Energy Partners	Lon C Hill	TX	3440	559	280	July 10, 2006	Carlyle/Riverstone Global Energy and Pow
Sempra Energy Partners	Nueces Bay	TX	3441	559	280	July 10, 2006	Carlyle/Riverstone Global Energy and Pow
Sempra Energy Partners	Victoria	TX	3443	491	246	July 10, 2006	Carlyle/Riverstone Global Energy and Pow
Sempra Energy Partners; Carlyle/Riversto	Coletto Creek	TX	6178	600	600	July 10, 2006	International Power PLC
Atlantic City Electric	Conemaugh	PA	3118	1,700	65	September 01, 2006	Duquesne Light Holdings
Atlantic City Electric	Keystone	PA	3136	1,700	42	September 01, 2006	Duquesne Light Holdings
Progress Ventures	Rowan	NC	7826	978	978	September 05, 2006	Southern Power
ONEOK	Spring Creek	OK	55651	280	280	October 31, 2006	Westar
Northeast Utilities	Bulls Ridge	CT	541	8	8	November 01, 2006	Energy Capital Partners
Northeast Utilities	Cabot	MA	1629	62	62	November 01, 2006	Energy Capital Partners
Northeast Utilities	Falls Village	CT	560	10	10	November 01, 2006	Energy Capital Partners
Northeast Utilities	Mt. Tom	MA	1606	144	144	November 01, 2006	Energy Capital Partners
Northeast Utilities	Northfield Mountain	MA	547	1,080	1,080	November 01, 2006	Energy Capital Partners
Northeast Utilities	Rocky River	CT	539	29	29	November 01, 2006	Energy Capital Partners
Northeast Utilities	Scotland	CT	551	2	2	November 01, 2006	Energy Capital Partners
Northeast Utilities	Shepaug	CT	552	42	42	November 01, 2006	Energy Capital Partners
Northeast Utilities	Stevenson	CT	553	28	28	November 01, 2006	Energy Capital Partners

Table ES4. Plants Sold and Transferred in 2006, 2007 and 2008

Seller	Plant	State	EIA Plant ID	Net Summer Capacity (Megawatts)		Transaction Closing Date	Buyer
				Plant Total	Sold or Transferred		
Northeast Utilities	Taftville	CT	554	2	2	November 01, 2006	Energy Capital Partners
Northeast Utilities	Tunnel	CT	557	17	17	November 01, 2006	Energy Capital Partners
Northeast Utilities	Turners Falls	MA	6388	6	6	November 01, 2006	Energy Capital Partners
Dynegy	Rockingham Power	NC	55116	775	775	November 10, 2006	Duke Energy Carolinas
Consumers Energy	Midland Cogeneration	MI	10745	1,833	641	November 21, 2006	GSO Capital Partners and Rockland Capital Energy Investments
American Electric Power	Plaquemine	LA	55419	844	844	December 01, 2006	Dow Chemical
Constellation Energy	Big Sandy	WV	55284	300	300	December 15, 2006	Tenaska
Constellation Energy	High Desert	CA	55518	780	780	December 15, 2006	Tenaska
Constellation Energy	Holland Energy	IL	55334	449	449	December 15, 2006	Tenaska
Constellation Energy	Rio Nogales	TX	55137	705	705	December 15, 2006	Tenaska
Constellation Energy	University Park	IL	55250	300	300	December 15, 2006	Tenaska
Constellation Energy	Wolf Hills	VA	55285	250	250	December 15, 2006	Tenaska
Gamesa	Mendota Hills	IL	56160	50	50	January 03, 2007	Babcock and Brown
NRG Energy	Chowchilla II	CA	56185	47	47	January 03, 2007	Wayzata Investment Partners
NRG Energy	Red Bluff	CA	56184	45	45	January 03, 2007	Wayzata Investment Partners
Calpine Corp	Aries Power Project	MO	55178	620	620	January 16, 2007	Kelson Holdings
Peoples Energy	Elwood	IL	55199	1,350	675	January 17, 2007	J-Power
WPS Energy Services	WPS Power Niagara	NY	50202	53	53	January 31, 2007	US Renewables Group
Atlantic City Electric	BL England	NJ	2378	447	447	February 09, 2007	Rockland Capital Energy Investments
American Electric Power	Oklaunion	TX	127	690	25	February 15, 2007	Brownsville Public Utility Board
Dominion Energy	Armstrong	PA	55347	584	584	March 05, 2007	Tenaska and Warburg Pincus
Dominion Energy	Pleasants	WV	55349	392	392	March 05, 2007	Tenaska and Warburg Pincus
Dominion Energy	Troy	OH	55348	584	584	March 05, 2007	Tenaska and Warburg Pincus
Calpine Corp	Goldendale Energy Center	WA	55482	220	220	March 21, 2007	Puget Sound Energy
Consumers Energy	Palisades	MI	1715	778	778	April 11, 2007	Entergy
DPL Energy	Darby	OH	55247	452	452	April 25, 2007	Columbus Southern Power
DPL Energy	Greenville Electric Generating Station	OH	55228	176	176	April 25, 2007	Buckeye Power
Mirant	Apex	NV	55514	494	494	May 01, 2007	LS Power
Mirant	Bosque	TX	55172	548	548	May 01, 2007	LS Power
Mirant	Shady Hills	FL	55414	468	468	May 01, 2007	LS Power
Mirant	Sugar Creek	IN	55364	521	521	May 01, 2007	LS Power
Mirant	West Georgia	GA	55267	762	762	May 01, 2007	LS Power
Mirant	Zealand	MI	55087	770	770	May 01, 2007	LS Power
PSEG	Lawrenceburg Energy Center	IN	55502	1,082	1,082	May 17, 2007	AEP
Algonquin Power	EKS Landfill	MN	54939	4	4	June 30, 2007	WM Renewable Energy
FirstEnergy	Bruce Mansfield	PA	6094	2,460	830	July 13, 2007	AIG Financial Products and Union Bank of California
KeySpan	EF Barrett	NY	2511	690	690	August 24, 2007	National Grid
KeySpan	East Hampton	NY	2512	24	24	August 24, 2007	National Grid
KeySpan	Far Rockaway	NY	2513	111	111	August 24, 2007	National Grid
KeySpan	Glenwood	NY	2514	339	339	August 24, 2007	National Grid
KeySpan	Holtsville	NY	8007	524	524	August 24, 2007	National Grid
KeySpan	Landing	NY	7869	94	94	August 24, 2007	National Grid
KeySpan	Montauk	NY	2515	5	5	August 24, 2007	National Grid
KeySpan	Northport	NY	2516	1,565	1,565	August 24, 2007	National Grid
KeySpan	Port Jefferson	NY	2517	559	559	August 24, 2007	National Grid
KeySpan	Ravenswood	NY	2500	2,324	2,324	August 24, 2007	National Grid
KeySpan	Shoreham	NY	2518	64	64	August 24, 2007	National Grid
KeySpan	South Hampton	NY	2519	7	7	August 24, 2007	National Grid
KeySpan	Southold	NY	2520	12	12	August 24, 2007	National Grid
KeySpan	Wading River	NY	7146	241	241	August 24, 2007	National Grid
KeySpan	West Babylon	NY	2521	49	49	August 24, 2007	National Grid
Calpine	Acadia	LA	55173	1,063	532	September 13, 2007	Cajun Gas Energy
American Electric Power	Sweeny	TX	55015	480	240	October 01, 2007	ConocoPhillips
Wisconsin Electric Power	Point Beach	WI	4046	1,041	1,041	October 01, 2007	FPL Energy LLC
City of Klamath Falls	Klamath Cogeneration Plant	OR	55103	470	470	December 05, 2007	PPM Energy
Algonquin Power	Colton Landfill	CA	56167	1	1	December 21, 2007	Fortistar
Algonquin Power	Mid Valley Landfill	CA	56170	3	3	December 21, 2007	Fortistar
Algonquin Power	Milliken Landfill	CA	56171	2	2	December 21, 2007	Fortistar
Algonquin Power	Prima Desheha Landfill	CA	55601	5	5	December 21, 2007	Fortistar
Algonquin Power	Tajiguas Landfill	CA	55603	3	3	December 21, 2007	Fortistar
Algonquin Power Income Fund	Four Hills Nashua Landfill	NH	55006	3	3	December 21, 2007	Fortistar
Duke Energy Indiana	Wabash River	IN	1010	950	274	January 01, 2008	Wabash Valley Power Association
Tenaska	Commonwealth Chesapeake	VA	55381	312	312	February 15, 2008	Tyr Energy
Dynegy	Calcasieu	LA	55165	310	310	April 01, 2008	Entergy Gulf States
Duke Energy	Brownsville Peaking Power	TN	55081	450	450	April 11, 2008	TVA
Jersey Central Power & Light	Forked River	NJ	7138	66	66	April 17, 2008	Maxim
GE Energy Financial Services	Birchwood Power	VA	54304	238	118	May 09, 2008	J-Power
Southaven Operating Services	Southaven Power	MS	55269	759	759	May 09, 2008	TVA

Table ES4. Plants Sold and Transferred in 2006, 2007 and 2008

Seller	Plant	State	EIA Plant ID	Net Summer Capacity (Megawatts)		Transaction Closing Date	Buyer
				Plant Total	Sold or Transferred		
SCS Energy	Astoria	NY	55375	312	95	May 26, 2008	Suez Energy International
LS Power	Sugar Creek Energy	IN	55364	521	521	June 23, 2008	Northern Indiana Public Service
NiSource	Whiting Clean Energy	IN	55259	547	547	July 01, 2008	BP Alternative Energy North America
Black Hills	Arapahoe Combustion Turbine Project	CO	55200	123	123	July 28, 2008	Hastings Funds management and IIF
Black Hills	Fountain Valley	CO	55453	234	234	July 28, 2008	BH Investment
Black Hills	Harbor Cogeneration	CA	50541	102	102	July 28, 2008	Hastings Funds Management and IIF
Black Hills	Las Vegas Cogeneration	NV	10761	50	50	July 28, 2008	BH Investment
Black Hills	Las Vegas Cogeneration II	NV	55952	220	220	July 28, 2008	Hastings Funds Management and IIF
Black Hills	Valmont Combustion Turbine Project	CO	55207	80	80	July 28, 2008	BH Investment
Sumas Cogeneration	Sumas Power Plant	WA	54476	126	126	July 28, 2008	Hastings Funds management and IIF
Tenaska	Armstrong	PA	55347	584	584	July 30, 2008	BH Investment
Tenaska	Calumet	IL	50166	329	329	July 30, 2008	International Power
Tenaska	Pleasants	WV	55349	292	292	July 30, 2008	International Power
Tenaska	Troy	OH	55348	584	584	July 30, 2008	International Power
Dynegy	Rolling Hills	OH	55401	825	825	August 01, 2008	International Power
Pittsfield Generating Company	Pittsfield Generating	MA	50002	141	141	August 06, 2008	Tenaska
National Grid	Ravenswood	NY	2500	2,318	2,318	August 26, 2008	Maxim
Suez Energy North America	Chehalis Generating Facility	WA	55662	495	495	September 16, 2008	TransCanada
Kelson Hodings	Redbud	OK	55463	1,144	1,144	September 29, 2008	PacifiCorp
Black Hills	Wygen I	WY	55479	70	16	Pending	Oklahoma Gas & Electric
Mach Gen LLC	Covert Generating Project	MI	55297	1,058	1,058	Pending	Municipal Energy Agency of Nebraska
Reliant	Bighorn Generating Station	NV	55687	570	570	Pending	Tenaska
							Nevada Power

Notes: • The "Transaction Closing Date" is estimated based on press reports and Security and Exchange Commission filings. • The "Capacity Sold or Transferred" values are based on a combination of capacity data in the EIA-860 data files, press reports and Security and Exchange Commission filings, and may not exactly match transaction values shown in other sources. • A power plant may appear more than once on this list due to involvement in multiple transactions, such as the sale of different shares of the plant at different points in time. • Data are preliminary. Final data for the year are to be released in the Form EIA-860 annual databases.

Source: Press reports; filings with the Security and Exchange Commission; Energy Information Administration, Form EIA-860 "Annual Electric Generator Report" data files.