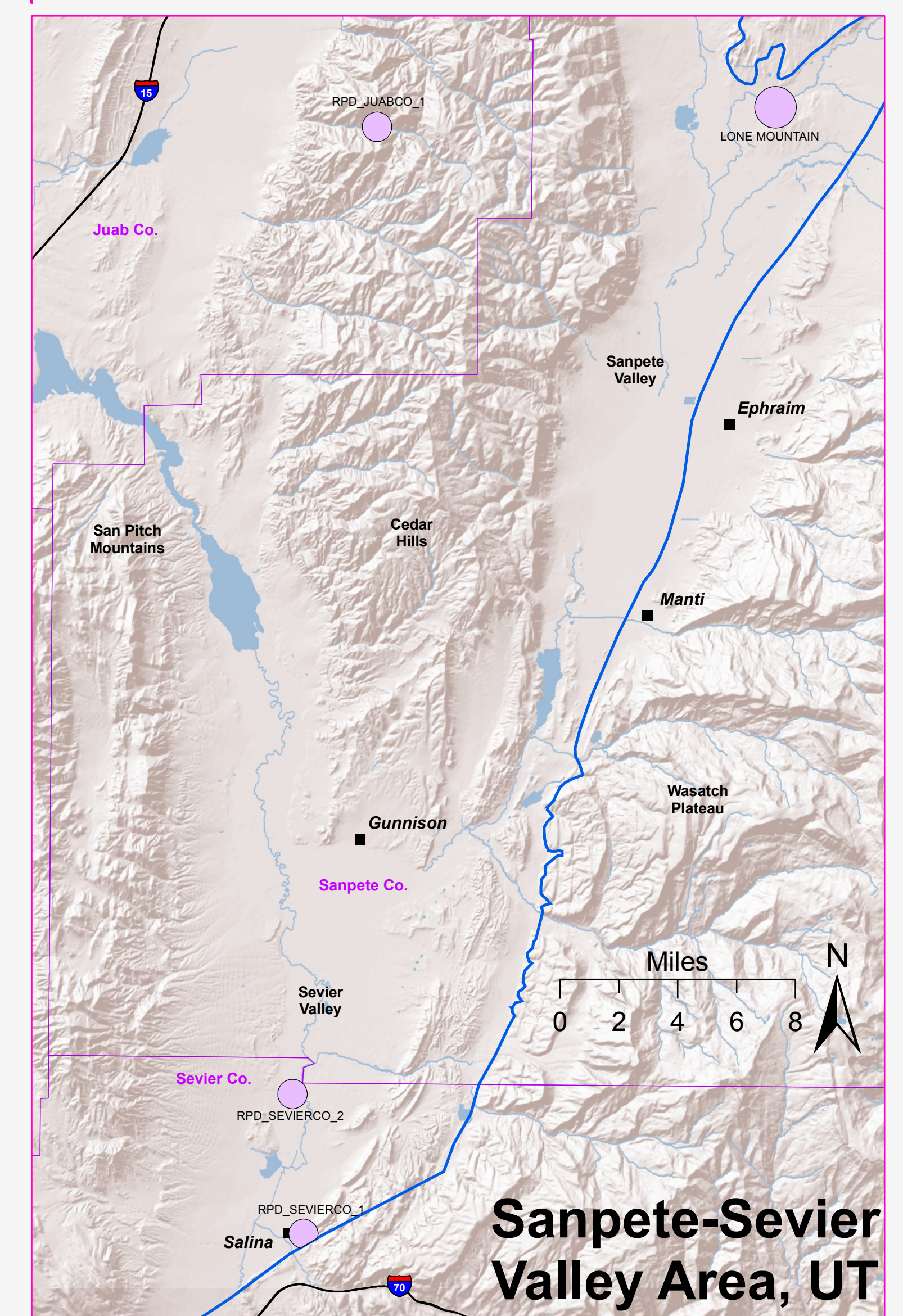
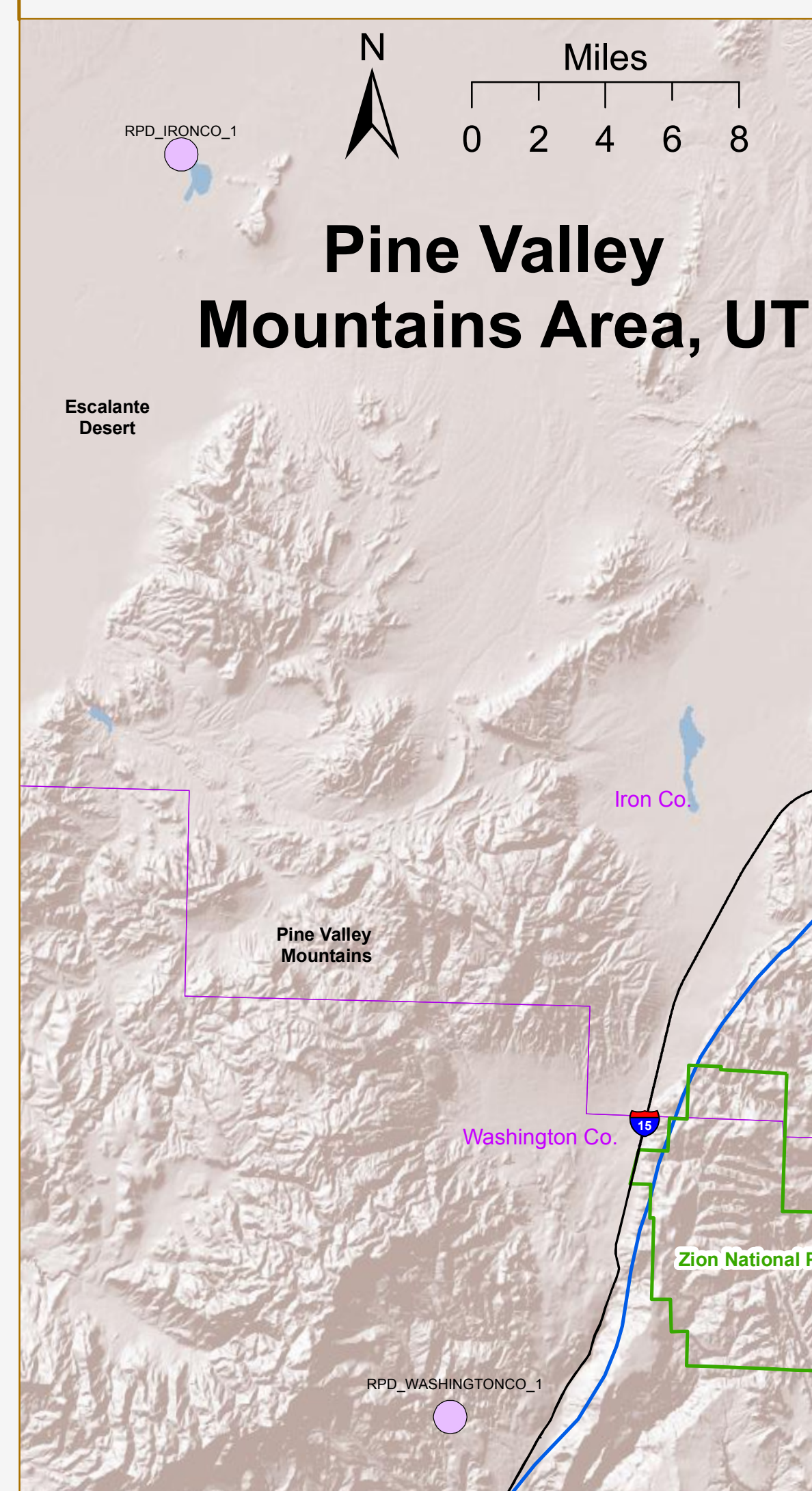
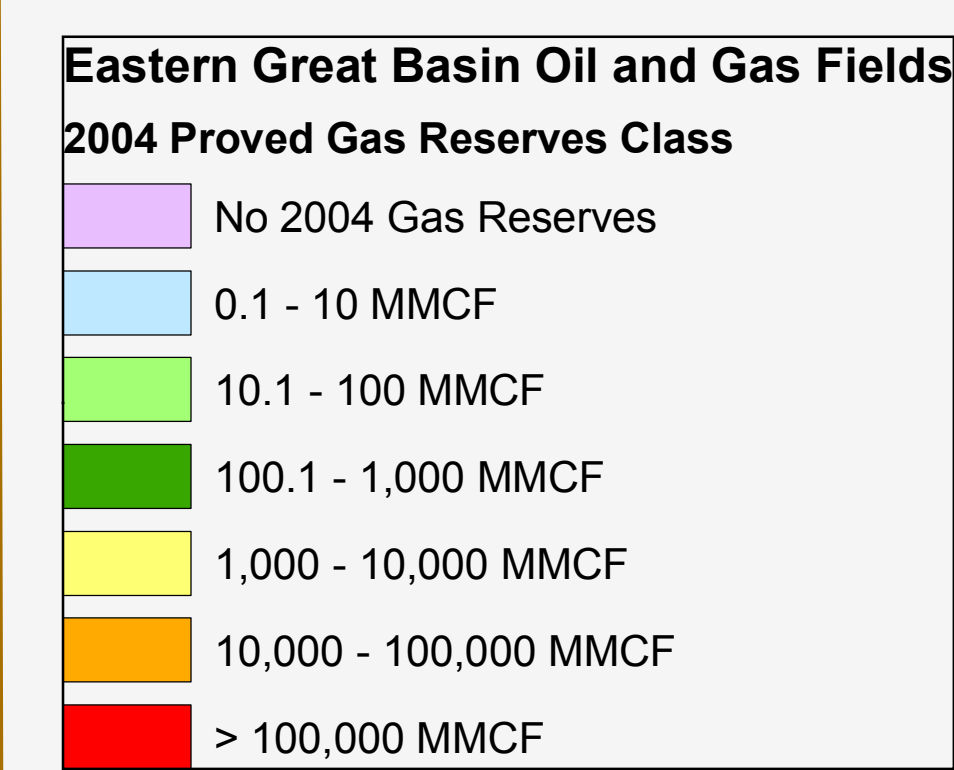
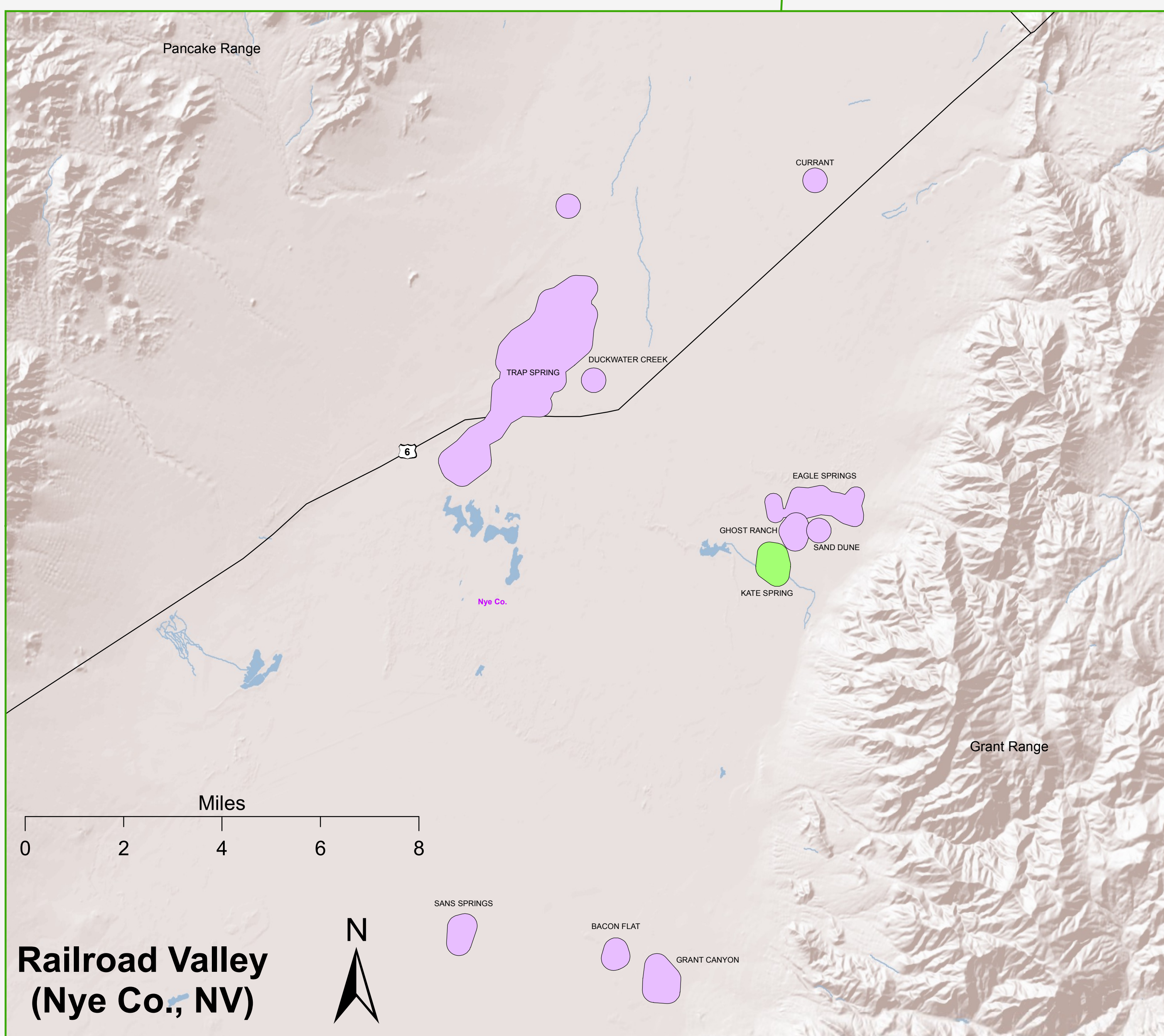
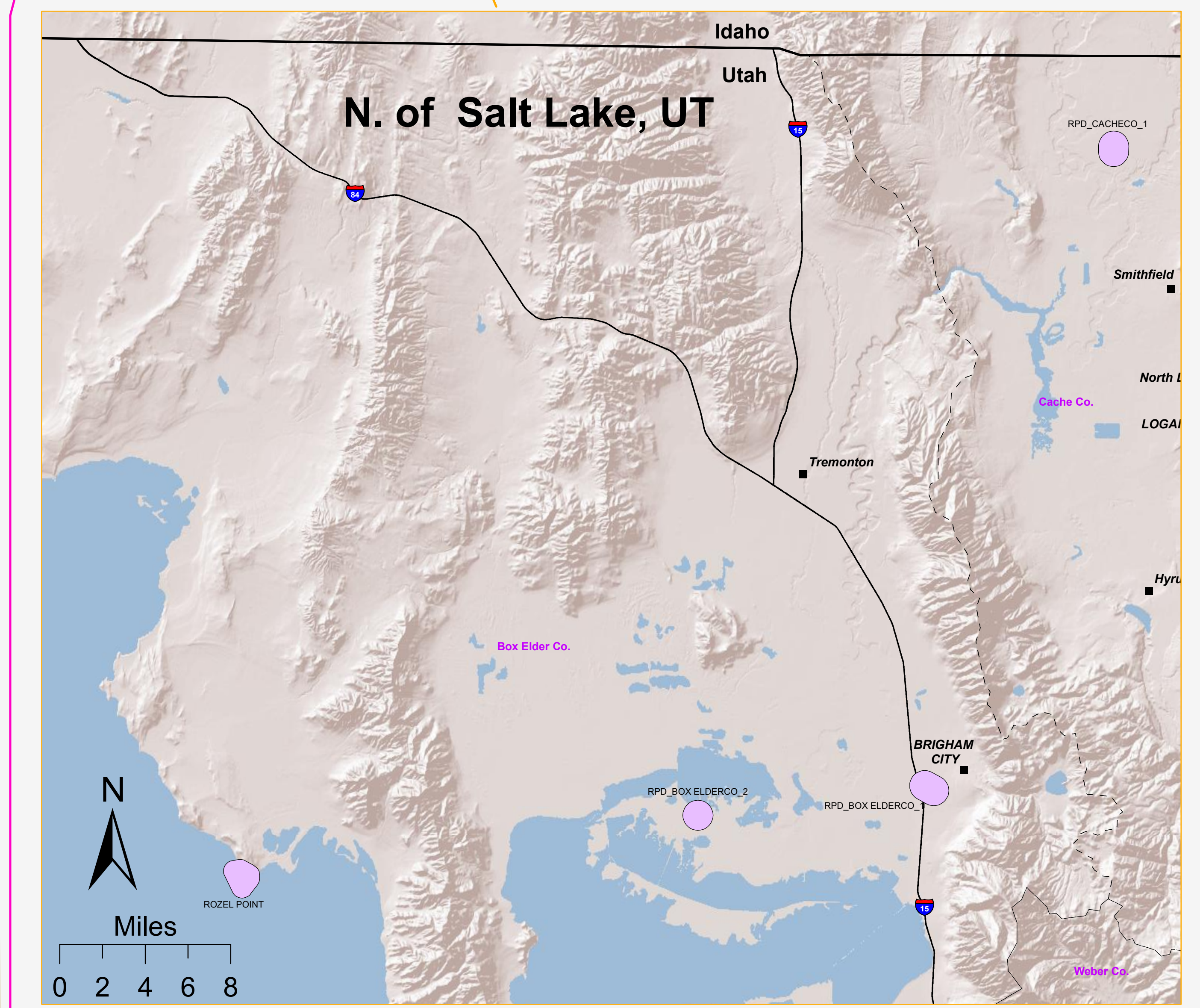
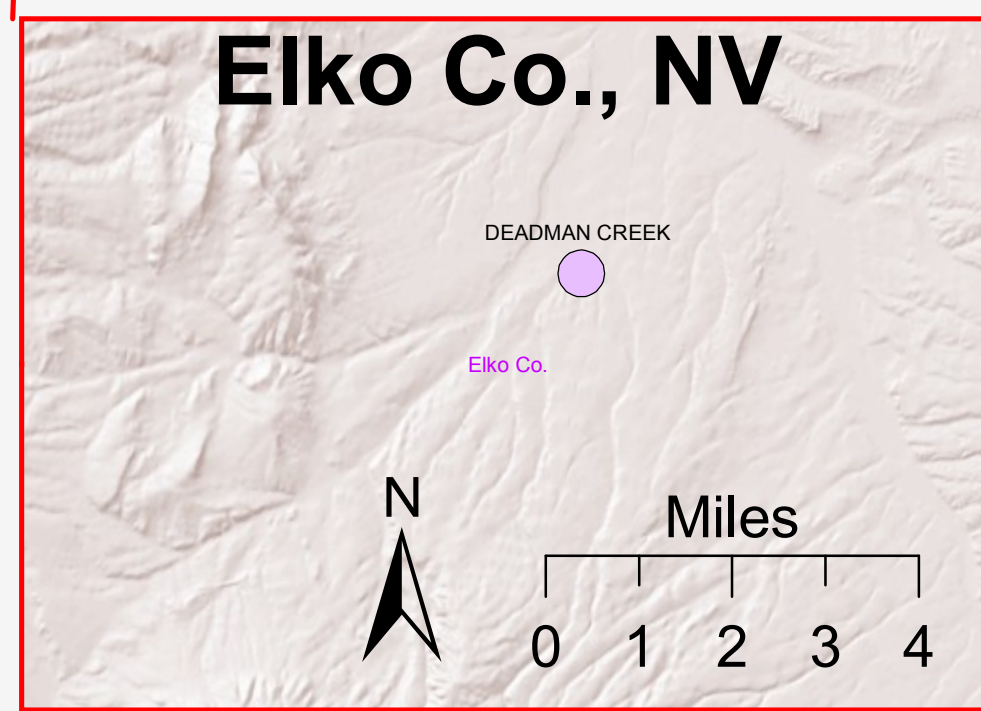
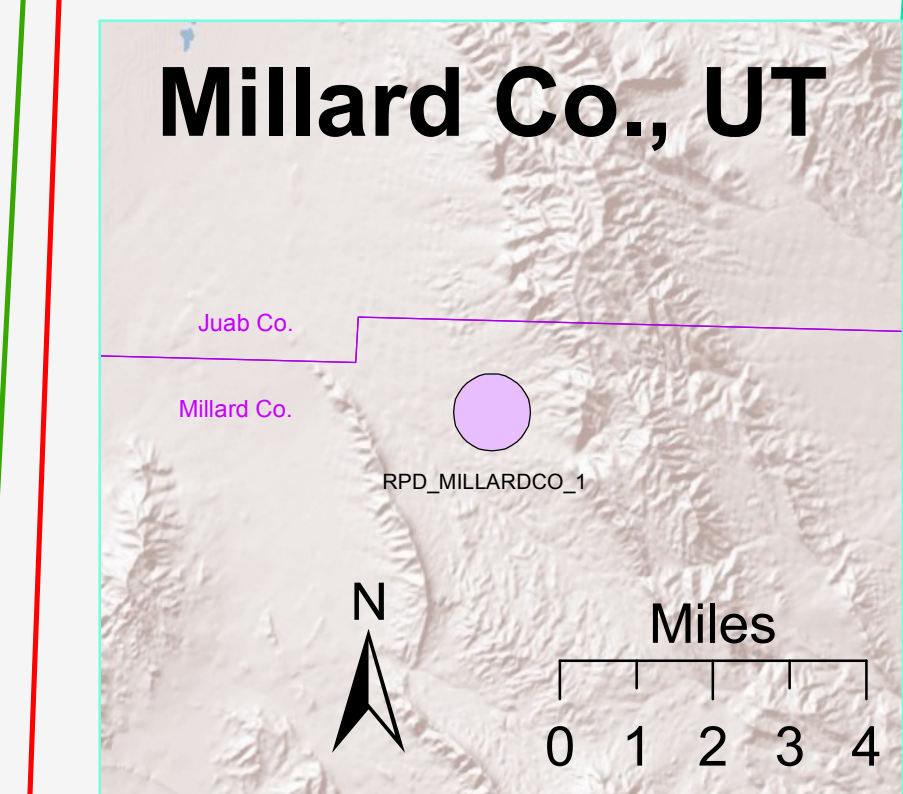
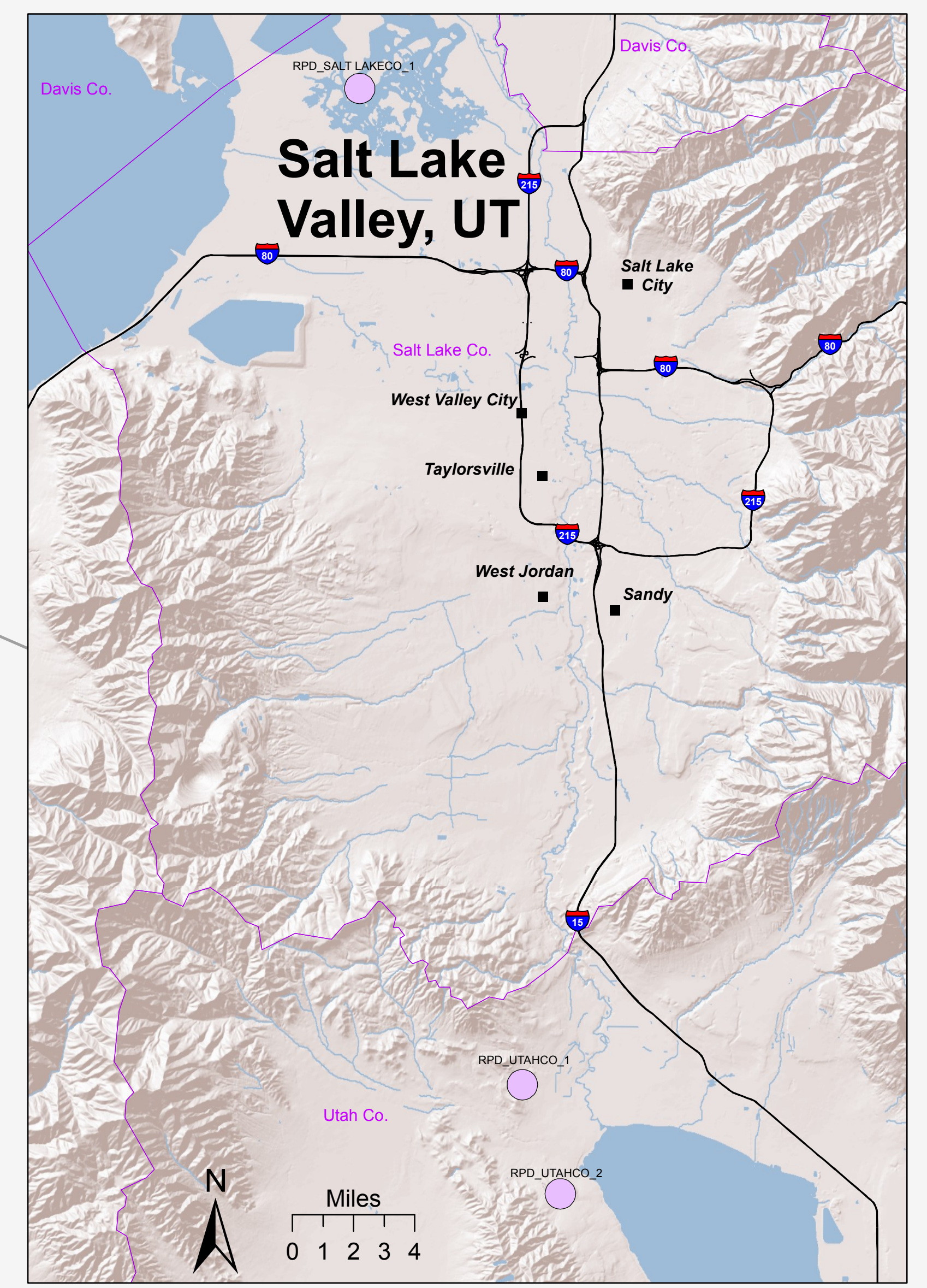
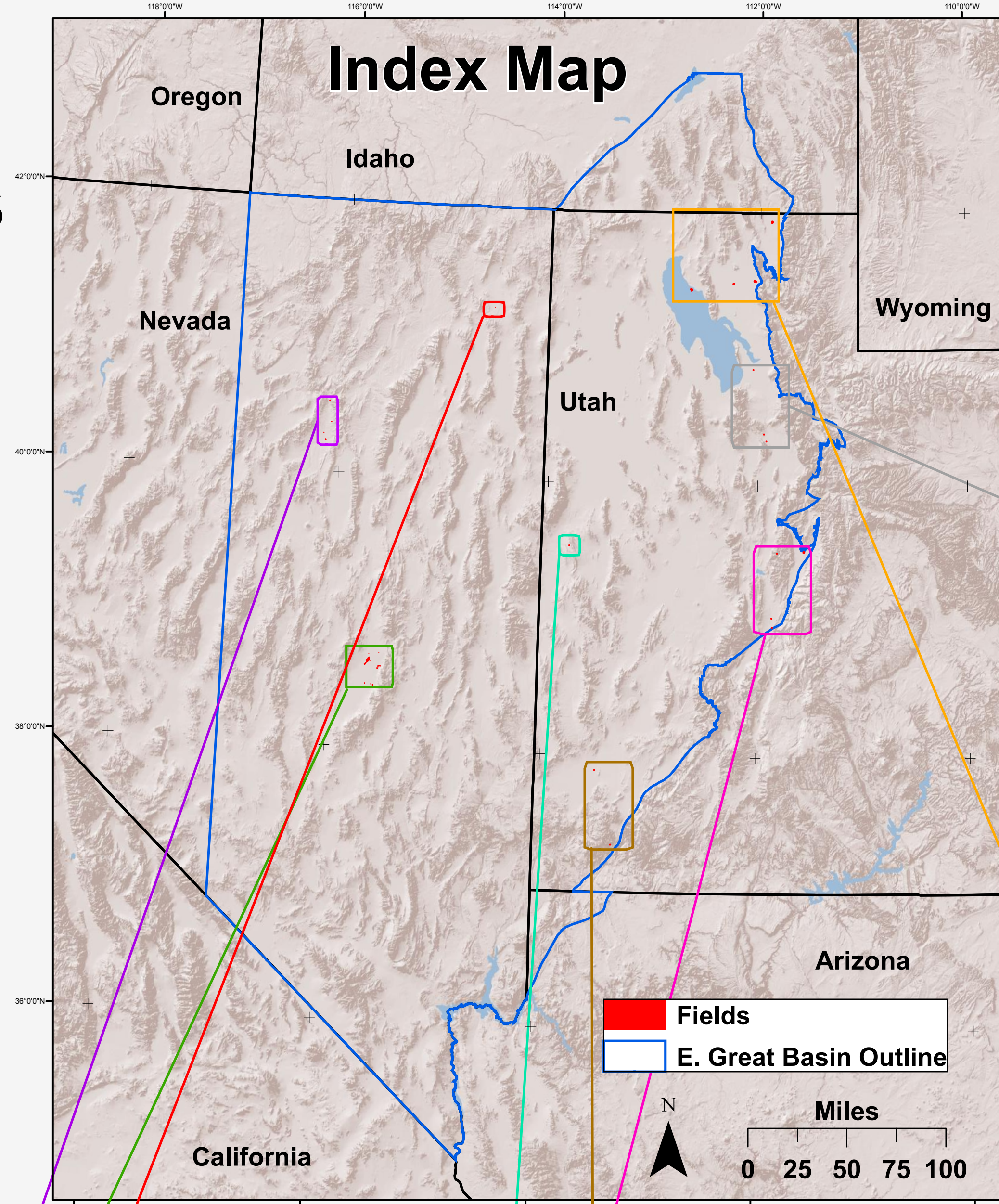
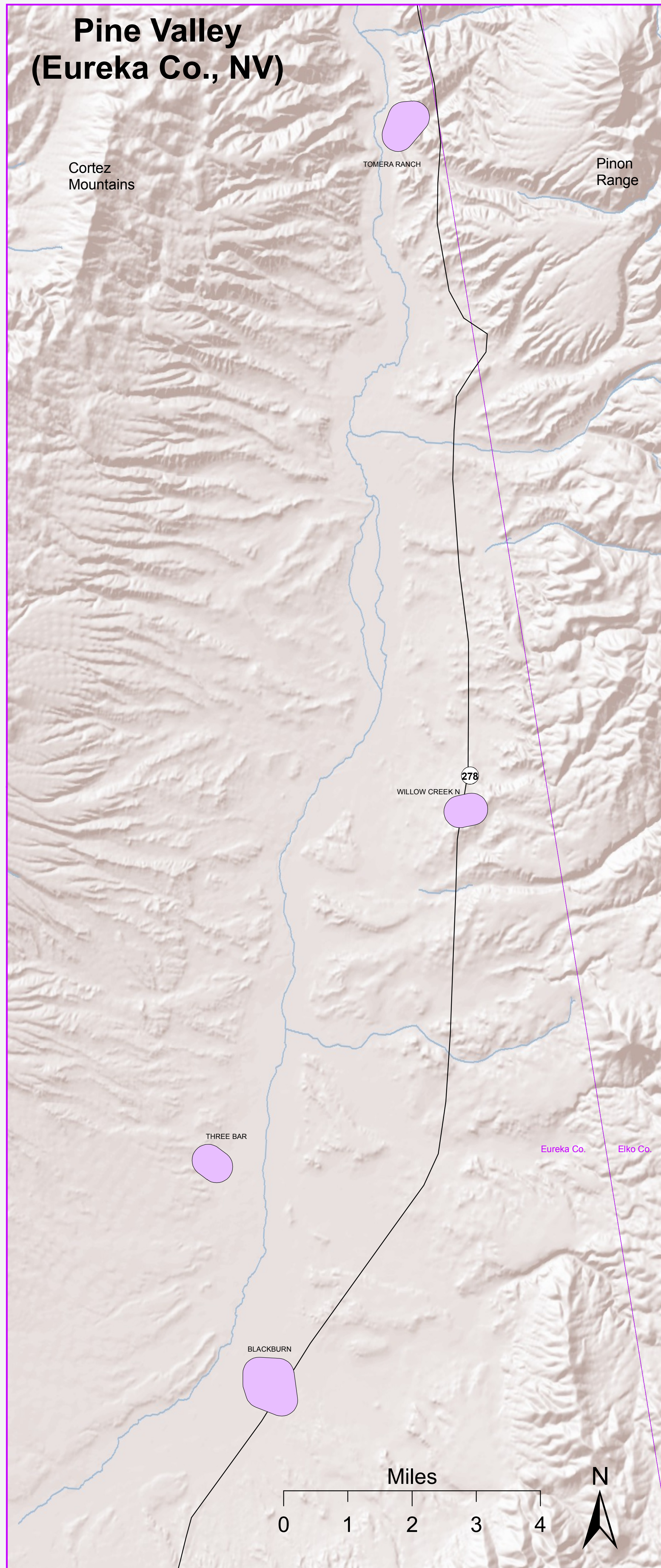


Eastern Great Basin Oil and Gas Fields By 2004 Gas Reserve Class



The mapped oil and gas field boundary outlines were created by the Reserves and Production Division, Office of Oil and Gas, Energy Information Administration pursuant to studies required by Section 604 of the Energy Policy and Conservation Act Amendments of 2000 (P.L. 106-469). The boundaries are not informed by subsurface structural information. The data and methods used in their creation are detailed in a report, "Scientific Inventory of Onshore Federal Lands' Oil and Gas Resources and Reserves and the Extent and Nature of Restrictions to Their Development", prepared by the US Departments of Interior, Agriculture and Energy.

Bottom-hole well locations were not available digitally for directional and horizontal wells, therefore the field boundaries for fields with many of those well types may be conservative.

Map created May 2008; projection is UTM-12, NAD-27.

Authors: Sam Limerick (1), Lucy Luo (1), Gary Long (2), David F. Morehouse (2), Jack Penn (1), and Robert F. King (2)

(1) Z. Inc., (2) Energy Information Administration