

U.S. Natural Gas Imports and Exports—1996

by Ann M. Ducca and Norman L. Crabtree

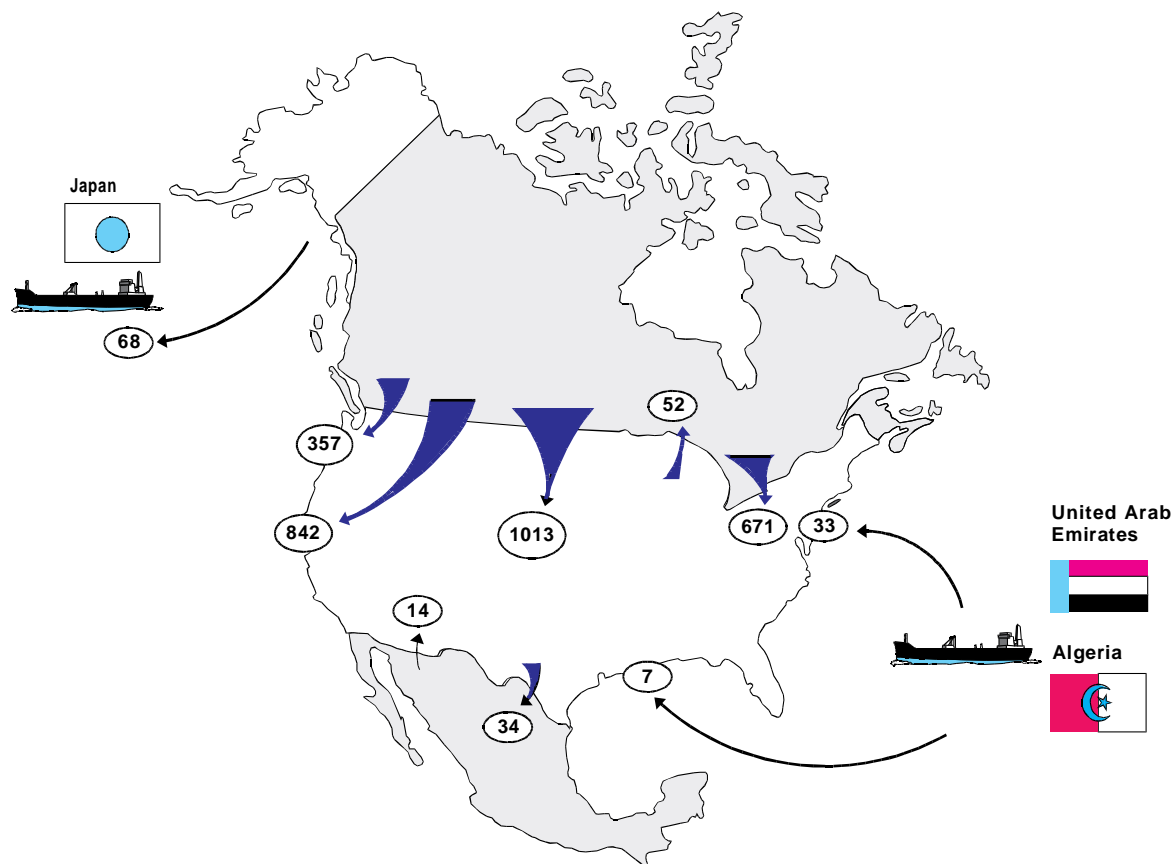
During 1996, Canada continued its role as the major supplier of gas imported into the United States. However, the growth rate of U.S. imports of Canadian gas slowed as pipeline capacity utilization remained near its maximum level and capacity expansion grew only minimally. Mexico continued to become increasingly integrated into the North American natural gas market as cooperative projects among the North American nations proceeded. Spot purchases of liquefied natural gas (LNG) from the United Arab Emirates indicated that LNG transactions are becoming more flexible and

responsive to changes in the world marketplace (Figure SR1).

Some of the highlights of 1996 for U.S. natural gas imports and exports are:

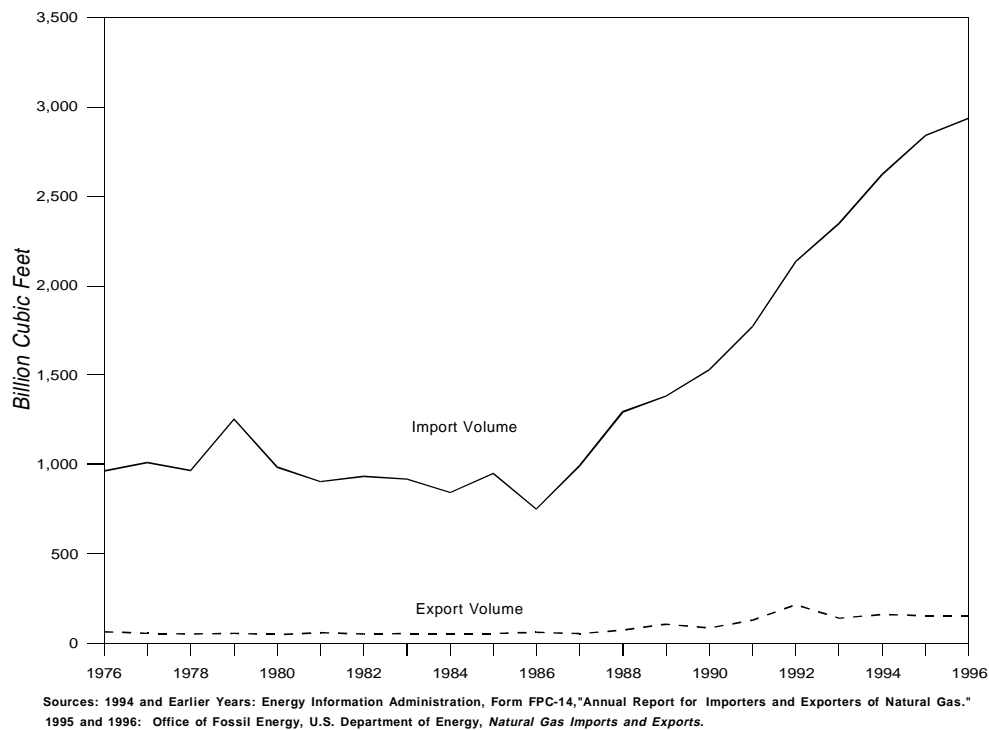
- Net imports rose for the 10th consecutive year, representing almost 13 percent of U.S. natural gas consumption. Exports remained at nearly the same level as one year ago (Table SR1).

Figure SR1. Flow of Natural Gas Imports and Exports, 1996
(Billion Cubic Feet)



Source: Office of Fossil Energy, U.S. Department of Energy, *Natural Gas Imports and Exports*.

Figure SR2. Total Natural Gas Imports and Exports, 1976-1996



- Pipeline imports from Canada continued to climb to a new record level of 2,883 billion cubic feet, although the growth rate slowed. From 1995 to 1996 imports rose in all regional areas, with the Northeast and the Pacific Northwest showing the largest volumetric increases.

- The annual average price of natural gas imports from Canada rebounded to \$1.96 per thousand cubic feet, 32 percent above last year's 20-year record low of \$1.48 per thousand cubic feet (Table SR2). The substantial increase in Canadian gas prices follows the upward trend in U.S. wellhead prices.

- LNG imports from Algeria reached 35.3 billion cubic feet, almost double their 1995 level. This dramatic increase was primarily the result of the end of curtailments which began in August 1994 because of a major renovation project on Algeria's liquefaction plants.

- LNG exports from Alaska to Japan rose by 4 percent from 1995 levels to a record 67.6 billion cubic

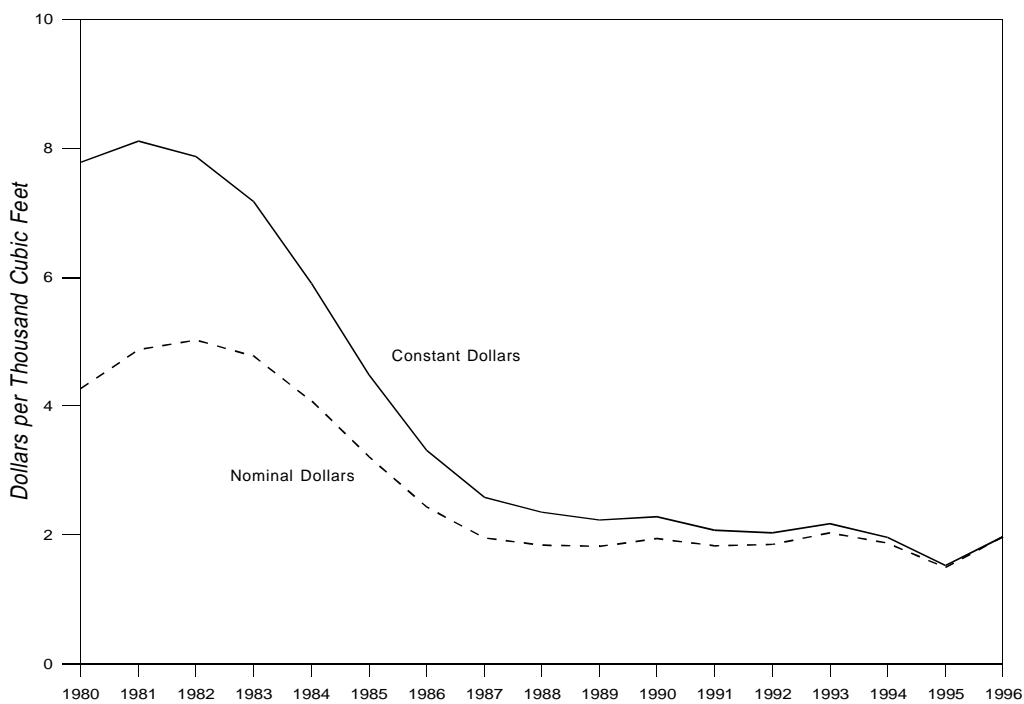
feet. These exports are nearing the maximum level of authorized volumes.

Trade with Canada

For the 10th consecutive year, natural gas imports from Canada increased, with record levels achieved in each of the past 9 years. (Figure SR2). They reached 2,883 billion cubic feet in 1996, accounting for 98 percent of net U.S. imports of natural gas. Net imports continued to represent a growing share of U.S. natural gas consumption—approaching 13 percent in 1996 (Figure SR5).

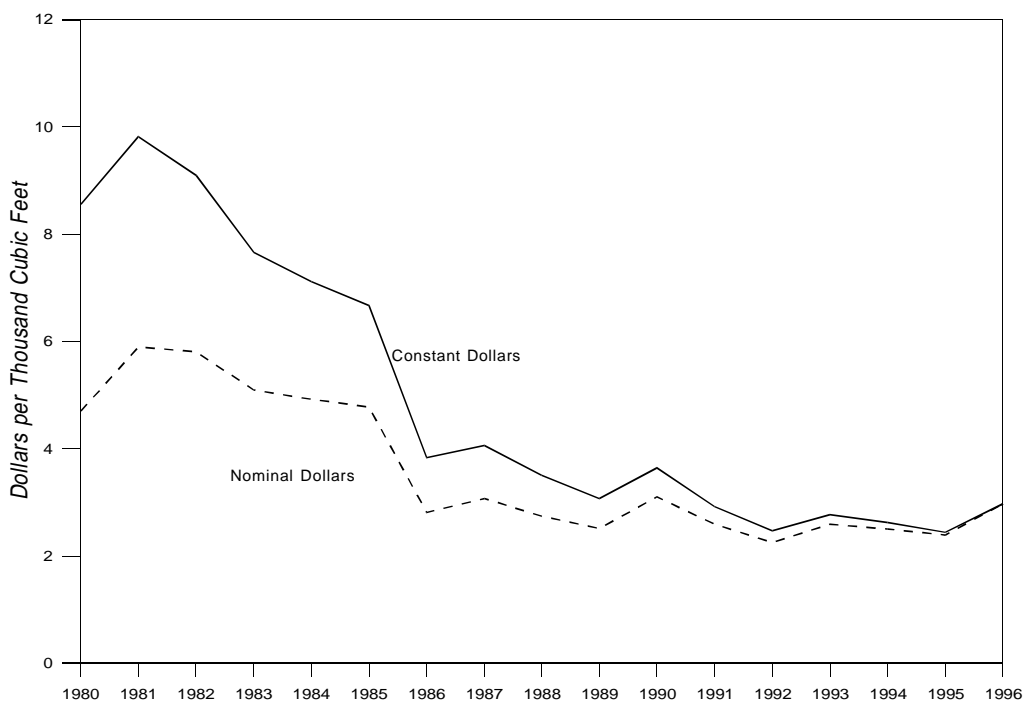
Despite the record import levels from Canada, the growth rate slowed to 2.4 percent in contrast to an average annual growth rate of 12 percent during the previous 9 years. The capacity of the pipelines that bring the gas across the border constrained the growth rate. Although a substantial increase in Canadian export capacity has taken place during the past 5 years, thus enabling the high growth rates experienced, current capacity is almost completely utilized. The current capacity oper-

Figure SR3. Average Price of U.S. Natural Gas Imports, 1980-1996



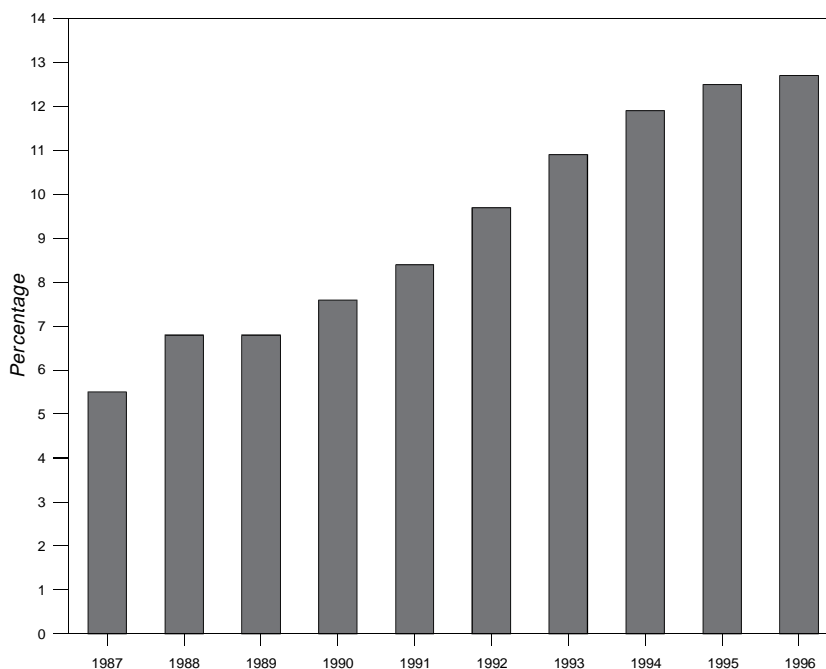
Sources: Nominal Dollars: 1994 and Earlier Years: Energy Information Administration, Form FPC-14, "Annual Report for Importers and Exporters of Natural Gas." 1995 and 1996: Office of Fossil Energy, U.S. Department of Energy, *Natural Gas Imports and Exports*.
 Constant Dollars: Prices were converted to 1996 dollars using the chain-type price indexes for Gross Domestic Product (1992 = 1.0) as published by the U.S. Department of Commerce, Bureau of Economic Analysis.

Figure SR4. Average Price of U.S. Natural Gas Exports, 1980-1996



Sources: Nominal Dollars: 1994 and Earlier Years: Energy Information Administration, Form FPC-14, "Annual Report for Importers and Exporters of Natural Gas." 1995 and 1996: Office of Fossil Energy, U.S. Department of Energy, *Natural Gas Imports and Exports*.
 Constant Dollars: Prices were converted to 1996 dollars using the chain-type price indexes for Gross Domestic Product (1992 = 1.0) as published by the U.S. Department of Commerce, Bureau of Economic Analysis.

Figure SR5. Net Imports as a Percentage of Total Consumption, 1987-1996



Sources: 1994 and Earlier Years: Energy Information Administration, Form FPC-14, "Annual Report for Importers and Exporters of Natural Gas." 1995 and 1996: Office of Fossil Energy, U.S. Department of Energy, *Natural Gas Imports and Exports*.

ated in excess of a 90 percent load factor during 1996.¹ The greatest monthly import volume of the year occurred during December, when the capacity utilization reached up to 98 percent.

Capacity expansion slowed in 1996 with less than a 1-percent increase. However, a number of pipeline projects are underway that would add substantial export capacity from Canada into the U.S. Midwest and Northeast. These projects will increase capacity by up to 5 billion cubic feet per day, although most are not expected to become operational until 2000. An additional 4 billion cubic feet per day of capacity additions is proposed for moving gas from the Midwest to the Northeast. This greater capacity within the United States will facilitate marketing of both Canadian and domestic gas in major consuming markets.

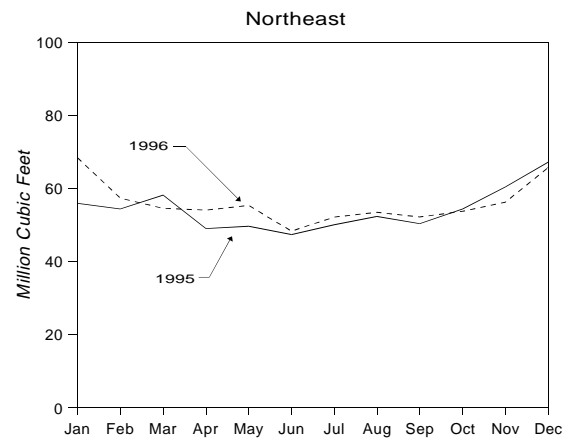
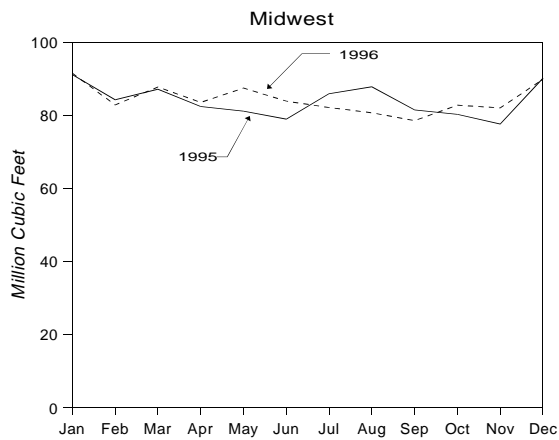
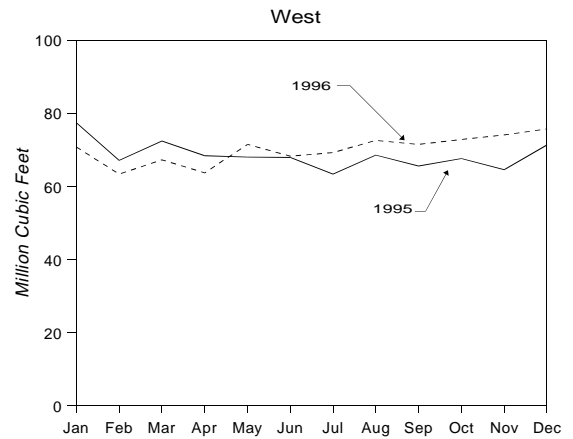
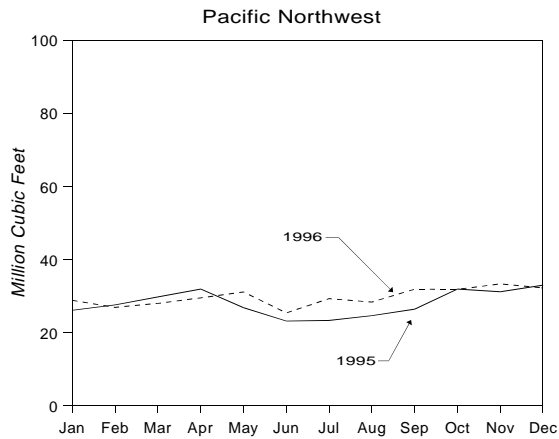
The average price of natural gas imports from Canada rebounded to \$1.96 per thousand cubic feet, a

32-percent increase over last year's 20-year record low of \$1.48 per thousand cubic feet. This is the second-highest average price since 1986 after the \$2.02 average price of 1993 (Table SR7). The substantial increase in Canadian import prices follows the trend in the U.S. wellhead prices, which rose 45 percent from 1995 to 1996. (The 1995 and 1996 wellhead prices per thousand cubic feet were \$1.55 and \$2.24, respectively. See Table 4 in the *Natural Gas Monthly* for wellhead prices.)

Pipeline imports from Canada enter the United States in four regional areas: the Pacific Northwest, the West, the Midwest, and the Northeast. From 1995 to 1996, natural gas imports rose in all four regional areas with the largest volumetric increases occurring in the Northeast (22.6 billion cubic feet) and the Pacific Northwest (20.8 billion cubic feet). The price of Canadian gas imports also rose in all four regions with increases ranging from 16 percent to 42 percent (Table SR6 and Figures SR6 and SR7).

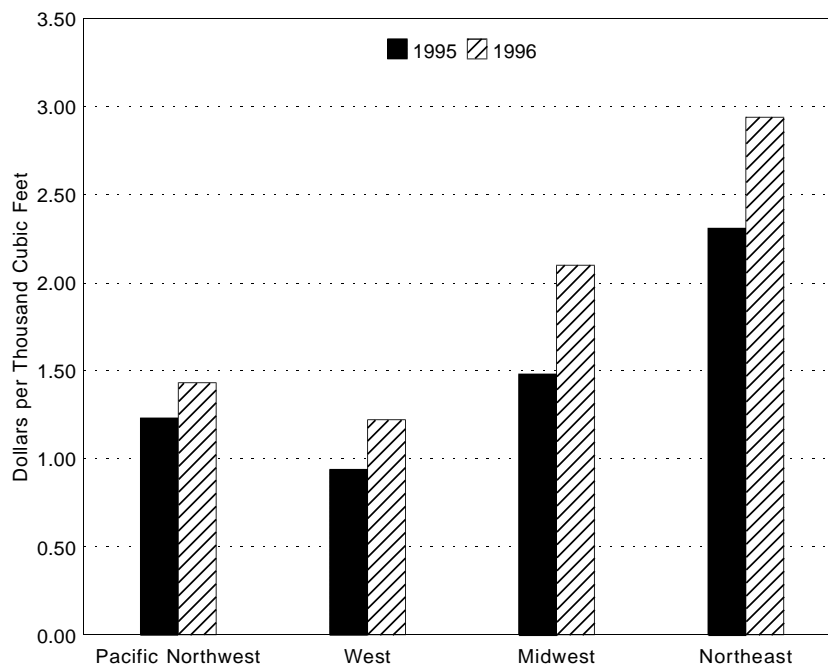
¹ Natural Resources Canada, *Canadian Natural Gas: Review of 1996 & outlook to 2002*, (Ottawa, Canada, April 1997).

Figure SR6. U.S. Natural Gas Pipeline Imports from Canada by Regional Point of Entry, 1995-1996



Source: Office of Fossil Energy, U.S. Department of Energy, *Natural Gas Imports and Exports*.

Figure SR7. Average Price of U.S. Natural Gas Pipeline Imports from Canada by Regional Point of Entry, 1995-1996



Source: Office of Fossil Energy, U.S. Department of Energy, *Natural Gas Imports and Exports*.

The Pacific Northwest, which has the lowest load factor relative to capacity, recorded the highest percentage increase in import volumes, 6.2 percent above last year's level. Canadian gas imports into this region reached 357 billion cubic feet in 1996. There is a single entry point at Sumas, Washington, with a total of five pipelines cross the border. Three of these lines are user-dedicated (to U.S. customers) and have built-in excess capacity, but this excess cannot be used to move gas to other customers. Thus this region is fast approaching export capacity limits, as are the other three regions. The Pacific Northwest experienced the lowest increase in price, from \$1.23 per thousand cubic feet in 1995 to \$1.43 in 1996, a 16-percent increase.

The West region also has only one entry point, located at Eastport, Idaho, and had the second-highest import volume in 1996 (the Midwest had the highest) at 842 billion cubic feet, a 2.3 percent increase over 1995. Almost all of these imports are marketed in California. The West had the lowest regional price in 1996, \$1.22

per thousand cubic feet, yet this price was nearly 30 percent higher than the 1995 price.

The Midwest region received the greatest volume of imports—1,013 billion cubic feet in 1996, less than 1 percent higher than the 1995 level. The entry points are located in Michigan, Minnesota, Montana, and North Dakota. The sharpest price increase occurred in this region, with the average price climbing from \$1.48 to \$2.10 per thousand cubic feet, a 42-percent increase.

Northeast imports rose by 3.5 percent to 671.3 billion cubic feet. Imports enter the Northeast through New York and Vermont. Imports at Grand Island and Champlain in New York, which were cited as showing the highest growth rates of all entry points in 1995, both experienced import reductions in 1996. The Champlain decrease was less than 4 percent, while the Grand Island drop was 15 percent, mainly because of a decline in short-term import sales and the termination of a long-term import contract by a New York distribution company. The Massena, New York import point also experienced a volume decrease of 23 percent, mostly as a result of a cogeneration facility reducing its

take under a long-term supply arrangement. The North-east paid the highest regional price, \$2.94 per thousand cubic feet. This was 27 percent higher than the 1995 price in the region and more than double the price paid in the West.

Natural gas exports to Canada climbed sharply to 52 billion cubic feet, an 88-percent increase over 1995 levels, but represented a return to 1994 levels. The average price of these exports was \$2.67 per thousand cubic feet—a 36-percent increase over the 1995 price (Table SR3). Despite the low prices for U.S. gas exports in 1995, Canadian gas was still more competitively priced. By 1996 the price of U.S. gas exports was closer to the Canadian price, which may have contributed to the increase in exports from the United States into Canada. Exports to Canada represented 34 percent of total U.S. natural gas exports during 1996.

Trade With Mexico

Exports of natural gas to Mexico fell sharply in 1996 to 33.8 billion cubic feet, the lowest level since 1990 and 45 percent less than the 1995 level. The price of exports to Mexico rebounded to \$2.11 per thousand cubic feet, up 41 percent from 1995 and the highest price since 1989. An explosion in July 1996 at one of Mexico's largest gas-processing plants destroyed a third of that nation's total processing capacity, and exports to Mexico surged during the following month (Tables SR8 and SR9). However, production capacity has returned to 95 percent of pre-explosion levels.²

The United States imported 13.9 billion cubic feet of natural gas from Mexico in 1996, more than double the amount imported during 1995. From 1984 through November 1993, the United States did not import gas from Mexico. Trade resumed in December 1993, and in each year since that time imports from Mexico have represented less than 1 percent of total U.S. natural gas imports (Table SR4). The evolving bilateral trade between the United States and Mexico is expected to continue. Crossborder trade reflects the circumstances of gas demand in various locations and the proximity of

available infrastructure or gas supplies on either side of the border.

Several projects are proceeding that will more fully integrate Mexico into the North American natural gas system. In a cooperative move among the North American nations, a consortium led by TransCanada Pipeline won the right in March 1997 to build a natural gas pipeline in the Yucatan peninsula. Other participants in the project, known as Merida, are the Bechtel affiliate, International Generating Company, and the Mexican firm, Corporacion GUTSA. The primary customers for this pipeline will be power plants in southern Mexico.³ In addition, other privately financed power generation and gas distribution projects are proceeding. Some of these include plans to import gas from the United States. Providing underlying support for many such projects is Mexico's intention to shift electricity generation from oil to natural gas.⁴

Liquefied Natural Gas

During 1996, the United States imported liquefied natural gas (LNG) from Algeria and the United Arab Emirates (Abu Dhabi) into Massachusetts and Louisiana and exported LNG from Alaska to Japan. LNG imports represented 1 percent of total imports, while LNG exports were 44 percent of total exports. Liquefaction makes overseas transportation possible. A 600-to-1 volume reduction is achieved by lowering the temperature of natural gas to approximately minus 260 degrees Fahrenheit.

LNG imports from Algeria rose to 35.3 billion cubic feet in 1996, nearly double the 1995 level. This dramatic increase was primarily the result of the end of curtailments, which began in August 1994. Sonatrach, the state-owned oil and gas company in Algeria, curtailed exports because of a major renovation project on that nation's liquefaction plants. Those renovations have progressed so that the original capacities of its liquefaction plants have been restored. Shipments at reduced levels were received during the first half of 1996,

² "Pemex Sees Sufficient Gas for Domestic Needs," *Platt's Oilgram News*, (June 5, 1997), p. 3.

³ "TransCanada Gets Pact to Build Mexico Trunkline" *Platt's Oilgram News* (March 21, 1997), p. 3.

⁴ "Industry Optimism on Upswing Over Gas Projects in Mexico" *Natural Gas Week* (April 14, 1997), p. 1.

but by the final quarter, shipments returned to pre-curtailment levels. LNG shipments from Algeria into the United States may also rise as a result of the beginning of operations (in November 1996) on the Gazoduc Maghreb-Europe pipeline. This pipeline provides an alternative way to deliver natural gas to Spain, which has been Algeria's second-largest (France is the largest) LNG customer. The result of using this pipeline for shipments to Spain would be that more LNG export capacity from Algeria will become available.

For the first time since 1986 when LNG was imported from Indonesia, and for only the second time since LNG imports commenced, spot purchases of LNG were received from sources other than Algeria. LNG was imported into Everett, Massachusetts from the United Arab Emirates in September and December of 1996; these shipments totaled just under 5 billion cubic feet. Another first occurred during the first half of 1997—a spot purchase of LNG from Australia was received in May, also in Massachusetts. These spot purchases indicate that LNG transactions are becoming more flexible and responsive to changes in the world marketplace. The Special Focus article, "Worldwide Natural Gas Supply and Demand and the Outlook for Global LNG Trade," which also appears in this issue of the *Natural Gas Monthly*, discusses the potential of LNG trading across the world.

Another factor influencing the increase in LNG imports was the significant rise in the prices of U.S. natural gas supplies. This enabled the historically higher-priced LNG to compete more successfully in the northeastern markets. The price of LNG imports from Algeria rose 17 percent to \$2.70 per thousand cubic feet. The price for the shipments from the United Arab Emirates averaged \$3.46 per thousand cubic feet, bringing the average LNG import price to \$2.80 per thousand cubic feet.

LNG exports from Alaska to Japan rose 4 percent from 1995 to 1996 to a record 67.6 billion cubic feet (Table SR5). The price for these exports increased 7 percent from the previous year to \$3.65 per thousand cubic feet. Total LNG exports to Japan are nearing the maximum level of volumes authorized by the U.S. Department of Energy, Office of Fossil Energy.

At present, there are two LNG import facilities in the United States that are not receiving LNG shipments. The Cove Point LNG facility in southern Maryland continues to be used to liquefy and store gas for later re-gasification during peak demand periods. For the present, the facility uses domestic gas, but in the long term it expects to be a receiving terminal for LNG tankers. The Elba Island LNG facility in Georgia is not scheduled for operation through 2000.

There are currently five projects proposed to expand U.S.-International LNG Trade:

- The Ecoelectrica Power Plant in Puerto Rico. This project would build a power plant to be fueled by LNG imported from various sources. The earliest possible in-service date is late 1997.
- The Trinidad and Tobago Export Facility. This project would develop the natural gas resources off the east coast of Trinidad and construct an LNG facility to export the gas to the Northeast United States and Europe. The earliest possible in-service date is mid-1999.
- The Nigerian LNG Export Project. This project would construct a new gas liquefaction facility off the Nigerian coast to export gas primarily to Europe but also to the United States. The earliest possible in-service date is late 2000.
- The Yukon Pacific LNG Export Project. This project would construct a new natural gas pipeline parallel to the existing crude oil pipeline in Alaska and a gas liquefaction plant and marine terminal at Valdez. The LNG would be exported from Alaska to Japan and other Pacific Rim countries. Completion of this project is anticipated for 2005 or later.
- The Cristobal Colon LNG Export Project. This project would develop natural gas resources off the eastern coast of Venezuela and build an LNG facility to ship to Western Europe and possibly the United States. The project is currently on hold.

Summary

Despite record import levels from Canada during 1996, the growth rate slowed as pipeline capacity utilization remained near its maximum level and capacity expansion grew only minimally. The near-term outlook is for further growth in imports because a number of pipeline projects are underway that would add substantial export capacity from Canada into the U.S. Midwest and Northeast. However, most of these projects are not expected to become operational until 2000. Trade be-

tween the United States and Mexico continued to evolve. It is influenced by the circumstances of gas demand in various locations and the proximity of available infrastructure or gas supplies on either side of the border. With the significant rise in U.S. natural gas prices, LNG imports (representing 1 percent of total U.S. gas imports) competed successfully in Northeast markets. Spot purchases of LNG from the United Arab Emirates indicated that LNG transactions are becoming more flexible and responsive to changes in the world marketplace.

Data Sources

Data for 1995 and 1996 are based on company filings made with the U.S. Department of Energy, Office of Fossil Energy. These filings report data on a monthly level and are received quarterly. The Office of Fossil Energy collects these data as part of its regulatory oversight responsibilities. These data are published by the Office of Fossil Energy in the quarterly report, *Natural Gas Imports and Exports* (DOE/FE-0347).

The data for 1994 and earlier years are taken from Form FPC-14, "Annual Report for Importers and Exporters of Natural Gas." The Form FPC-14 was discontinued in 1995. The data reported on Form FPC-14 represented physical movements of natural gas. The data collected by the Office of Fossil Energy are reported on an equity (sales) basis. For 1994 and earlier years, comparisons of the information in this article (physical movements) with the information reported by the Office of Fossil Energy (sales) may show differences because reporting requirements were different. Efforts were made to resolve these differences. Further information about how import and export data are collected is provided in the *Natural Gas Monthly*, Appendix B, "Data Sources."

Table SR1. Historical Summary of U.S. Natural Gas Net Imports, 1955-1996
(Million Cubic Feet)

Year	Total Imports	Total Exports	Net Imports	Total Consumption	Net Imports as Percentage of Total Consumption
1955	10,888	31,029	-	8,693,657	-
1956	10,380	35,963	-	9,288,865	-
1957	37,941	41,655	-	9,846,139	-
1958	135,797	38,719	97,078	10,302,608	0.9
1959	133,990	18,413	115,577	11,321,181	1.0
1960	155,646	11,332	144,314	11,966,537	1.2
1961	218,860	10,747	208,113	12,489,268	1.7
1962	401,534	15,814	385,720	13,266,513	2.9
1963	406,204	16,957	389,247	13,970,229	2.8
1964	443,326	19,603	423,723	14,813,808	2.9
1965	456,394	26,132	430,262	15,279,716	2.8
1966	479,780	24,639	455,141	16,452,403	2.8
1967	564,226	81,614	482,612	17,388,360	2.8
1968	651,885	93,745	558,140	18,632,062	3.0
1969	726,951	51,304	675,647	20,056,240	3.4
1970	820,780	69,813	750,967	21,139,386	3.6
1971	934,548	80,212	854,336	21,793,454	3.9
1972	1,019,496	78,013	941,483	22,101,452	4.3
1973	1,032,901	77,169	955,732	22,049,363	4.3
1974	959,284	76,789	882,495	21,223,133	4.2
1975	953,008	72,675	880,333	19,537,593	4.5
1976	963,768	64,711	899,057	19,946,496	4.5
1977	1,011,002	55,626	955,376	19,520,581	4.9
1978	965,545	52,532	913,013	19,627,478	4.7
1979	1,253,383	55,673	1,197,710	20,240,761	5.9
1980	984,767	48,731	936,036	19,877,293	4.7
1981	903,949	59,372	844,577	19,403,858	4.4
1982	933,336	51,728	881,608	18,001,055	4.9
1983	918,407	54,639	863,768	16,834,914	5.1
1984	843,060	54,753	788,307	17,950,524	4.4
1985	949,715	55,268	894,447	17,280,943	5.2
1986	750,449	61,271	689,178	16,221,296	4.2
1987	992,532	54,020	938,512	17,210,809	5.5
1988	1,293,812	73,638	1,220,174	18,029,588	6.8
1989	1,381,520	106,871	1,274,648	18,800,830	6.8
1990	1,532,259	85,565	1,446,694	18,716,269	7.6
1991	1,773,313	129,244	1,644,068	19,035,156	8.4
1992	2,137,504	216,282	1,921,222	19,544,364	9.7
1993	2,350,115	140,183	2,209,931	20,279,095	10.9
1994	2,623,839	161,738	2,462,101	20,707,717	11.9
1995	2,841,048	154,119	2,686,929	21,580,665	12.5
1996	2,937,413	153,393	2,784,020	^a 21,929,370	12.7

^a Preliminary data.

- = Not applicable.

Notes: Totals may not equal sum of components due to independent rounding. Geographic coverage is the continental United States including Alaska.

Source: **Total Consumption:** *Natural Gas Annual 1990 Volume 2* for 1955 through 1988; *Natural Gas Monthly* July 1995 for 1989 and 1990, August 1997 for 1991 through 1996. **All Other Data:** 1955-1971: Federal Power Commission, informally collected by letter. 1972-1994: Energy Information Administration, Form FPC-14, "Annual Report for Importers and Exporters of Natural Gas." 1995 and 1996: Office of Fossil Energy, U.S. Department of Energy, *Natural Gas Imports and Exports*.

Table SR2. Summary of U.S. Natural Gas Imports, 1995-1996

Source	Volume			Average Btu/ Cubic Foot		Revenue (thousand dollars)		Average Price			Average Price		
	(million cubic feet)		Percent Change	1995	1996	1995	1996	(dollars/ thousand cubic feet)		Percent Change	(dollars/ million Btu)		Percent Change
	1995	1996						1995	1996		1995	1996	
Pipeline													
Canada	2,816,408	2,883,277	2.4	1,021	1,021	4,176,377	5,645,578	1.48	1.96	32.4	1.45	1.92	32.4
Mexico	6,722	13,862	106.2	1,013	1,013	10,289	31,236	1.53	2.25	47.1	1.51	2.22	47.0
Total	2,823,130	2,897,138	2.6	1,021	1,021	4,186,667	5,676,814	1.48	1.96	32.4	1.45	1.92	32.4
LNG													
Algeria	17,918	35,325	97.1	1,098	1,100	41,144	95,522	2.30	2.70	17.4	2.09	2.46	17.7
Un. Arab Emirates		4,949			1,115		17,102		3.46			3.10	
Grand Total	2,841,048	2,937,413	3.4	1,021	1,022	4,227,811	5,789,438	1.49	1.97	32.2	1.46	1.93	32.2

Notes: Totals may not equal sum of components due to independent rounding. Geographic coverage is the continental United States including Alaska.

Source: Office of Fossil Energy, U.S. Department of Energy, *Natural Gas Imports and Exports*.

Table SR3. Summary of U.S. Natural Gas Exports, 1995-1996

Source	Volume			Average Btu/ Cubic Foot		Cost (thousand dollars)		Average Price			Average Price		
	(million cubic feet)		Percent Change	1995	1996	1995	1996	(dollars/ thousand cubic feet)		Percent Change	(dollars/ million Btu)		Percent Change
	1995	1996						1995	1996		1995	1996	
Pipeline													
Canada	27,554	51,905	88.4	1,013	1,013	54,042	138,345	1.96	2.67	36.2	1.94	2.63	35.6
Mexico	61,283	33,840	-44.8	1,011	1,011	91,653	71,369	1.50	2.11	40.7	1.48	2.09	41.2
Total	88,836	85,745	-3.5	1,012	1,012	145,694	209,714	1.64	2.45	49.4	1.62	2.42	49.4
LNG													
Japan	65,283	67,648	3.6	1,010	1,010	222,930	246,589	3.41	3.65	7.0	3.38	3.61	6.8
Grand Total	154,119	153,393	-0.5	1,011	1,011	368,624	456,303	2.39	2.97	24.3	2.37	2.94	24.1

Notes: Totals may not equal sum of components due to independent rounding. Geographic coverage is the continental United States including Alaska.

Source: Office of Fossil Energy, U.S. Department of Energy, *Natural Gas Imports and Exports*.

Table SR4. Historical Summary of U.S. Natural Gas Imports, 1955-1996
(Volume in Million Cubic Feet; Average Price in Dollars per Thousand Cubic Feet)

Year	Imports from Canada		Imports from Mexico Pipeline	Imports from Algeria LNG	Imports from Others LNG	Total Imports ^a	Average Price
	Pipeline	LNG					
1955	10,881	0	7	0	0	10,888	NA
1956	10,374	0	6	0	0	10,380	NA
1957	20,971	0	16,970	0	0	37,941	NA
1958	89,586	0	46,211	0	0	135,797	NA
1959	83,061	0	50,929	0	0	133,990	NA
1960	108,657	0	46,989	0	0	155,646	NA
1961	167,104	0	51,756	0	0	218,860	NA
1962	350,438	0	51,096	0	0	401,534	NA
1963	356,455	0	49,749	0	0	406,204	NA
1964	390,721	0	52,605	0	0	443,326	NA
1965	404,686	0	51,708	0	0	456,394	NA
1966	430,189	0	49,591	0	0	479,780	NA
1967	513,255	0	50,971	0	0	564,226	NA
1968	604,462	0	47,423	NA	0	651,885	NA
1969	680,106	0	46,845	NA	0	726,951	NA
1970	778,687	NA	41,336	757	0	820,780	NA
1971	910,926	1,500	20,689	1,433	0	934,548	NA
1972	1,009,093	230	8,140	2,032	0	1,019,496	0.31
1973	1,027,216	667	1,632	3,388	0	1,032,901	0.35
1974	959,063	0	222	0	0	959,284	0.55
1975	948,115	0	0	4,893	0	953,008	1.21
1976	953,613	0	0	10,155	0	963,768	1.72
1977	996,723	572	2,384	11,324	0	1,011,002	1.98
1978	881,123	0	0	84,422	0	965,545	2.13
1979	1,000,775	0	0	252,608	0	1,253,383	2.49
1980	796,507	0	102,410	85,850	0	984,767	4.28
1981	762,107	6	105,013	36,824	0	903,949	4.88
1982	783,407	0	94,794	55,136	0	933,336	5.03
1983	711,923	0	75,361	131,124	0	918,407	4.78
1984	755,368	0	51,502	36,191	0	843,060	4.08
1985	926,056	0	0	23,659	0	949,715	3.21
1986	748,780	0	0	0	^b 1,669	750,449	2.43
1987	992,532	0	0	0	0	992,532	1.95
1988	1,276,322	0	0	17,490	0	1,293,812	1.84
1989	1,339,357	0	0	42,163	0	1,381,520	1.82
1990	1,448,065	0	0	84,193	0	1,532,259	1.94
1991	1,709,716	0	0	63,596	0	1,773,313	1.83
1992	2,094,387	0	0	43,116	0	2,137,504	1.85
1993	2,266,751	0	1,678	81,685	0	2,350,115	2.03
1994	2,566,049	0	7,013	50,778	0	2,623,839	1.87
1995	2,816,408	0	6,722	17,918	0	2,841,048	1.49
1996	2,883,277	0	13,862	35,325	^c 4,949	2,937,413	1.97

^a Volumes reported for 1966 through 1996 are on a pressure base of 14.73 pounds per square inch absolute and 60 degrees Fahrenheit. Volumes for 1955 through 1965 are as reported.

^b Received from Indonesia.

^c Received from United Arab Emirates.

NA = Not available.

Notes: Totals may not equal sum of components due to independent rounding. Geographic coverage is the continental United States including Alaska.

Source: 1955-1971: Federal Power Commission, informally collected by letter. 1972-1994: Energy Information Administration, Form FPC-14, "Annual Report for Importers and Exporters of Natural Gas." 1995 and 1996: Office of Fossil Energy, U.S. Department of Energy, *Natural Gas Imports and Exports*.

Table SR5. Historical Summary of U.S. Natural Gas Exports, 1955-1996
(Volume in Million Cubic Feet; Average Price in Dollars per Thousand Cubic Feet)

Year	Exports to Canada Pipeline	Exports to Mexico Pipeline	Exports to Japan LNG	Total Exports ^a	Average Price
1955	11,467	19,562	0	31,029	NA
1956	16,819	19,144	0	35,963	NA
1957	30,867	10,788	0	41,655	NA
1958	32,129	6,590	0	38,719	NA
1959	11,739	6,674	0	18,413	NA
1960	5,759	5,573	0	11,332	NA
1961	5,577	5,170	0	10,747	NA
1962	5,574	10,240	0	15,814	NA
1963	6,879	10,078	0	16,957	NA
1964	9,763	9,840	0	19,603	NA
1965	17,979	8,153	0	26,132	NA
1966	20,281	4,358	0	24,639	NA
1967	70,456	11,158	0	81,614	NA
1968	81,647	12,098	0	93,745	NA
1969	34,931	13,391	2,982	51,304	NA
1970	10,878	14,678	44,257	69,813	NA
1971	14,349	15,632	50,231	80,212	NA
1972	15,553	14,579	47,882	78,013	0.51
1973	14,824	13,999	48,346	77,169	0.54
1974	13,263	13,268	50,258	76,789	0.72
1975	10,219	9,454	53,002	72,675	1.25
1976	7,506	7,425	49,779	64,711	1.55
1977	31	3,940	51,655	55,626	1.92
1978	66	4,033	48,434	52,532	2.13
1979	76	4,308	51,289	55,673	2.29
1980	113	3,886	44,732	48,731	4.70
1981	106	3,337	55,929	59,372	5.90
1982	162	1,705	49,861	51,728	5.81
1983	136	1,646	52,857	54,639	5.10
1984	127	1,786	52,840	54,753	4.92
1985	178	2,207	52,883	55,268	4.77
1986	9,203	1,896	50,172	61,271	2.81
1987	3,297	2,125	48,599	54,020	3.07
1988	19,738	2,327	51,573	73,638	2.74
1989	38,443	17,004	51,424	106,871	2.51
1990	17,359	15,659	52,546	85,565	3.10
1991	14,791	60,448	54,005	129,244	2.59
1992	67,777	95,973	52,532	216,282	2.25
1993	44,518	39,676	55,989	140,183	2.59
1994	52,556	46,500	62,682	161,738	2.50
1995	27,554	61,283	65,283	154,119	2.39
1996	51,905	33,840	67,648	153,393	2.97

^a Volumes reported for 1966 through 1996 are on a pressure base of 14.73 pounds per square inch absolute and 60 degrees Fahrenheit. Volumes for 1955 through 1965 are as reported.

NA = Not available.

Notes: Totals may not equal sum of components due to independent rounding. Geographic coverage is the continental United States including Alaska.

Source: 1955-1971: Federal Power Commission, informally collected by letter. 1972-1994: Energy Information Administration, Form FPC-14, "Annual Report for Importers and Exporters of Natural Gas." 1995 and 1996: Office of Fossil Energy, U.S. Department of Energy, *Natural Gas Imports and Exports*.

Table SR6. U.S. Natural Gas Imports by Point of Entry, 1995-1996
 (Volume in Million Cubic Feet; Average Price in Dollars per Thousand Cubic Feet)

Year and Month	Canada (Pipeline)							
	Pacific Northwest		West		Midwest			
	Sumas, WA		Eastport, ID		Babb, MT		Detroit, MI	
	Volume	Average Price	Volume	Average Price	Volume	Average Price	Volume	Average Price
1995								
January	26,116	1.55	77,522	1.12	940	1.49	1,238	2.41
February	27,604	1.39	67,201	0.92	859	1.37	1,120	2.09
March	29,771	1.24	72,514	0.88	1,502	1.22	1,149	2.13
April	31,919	1.13	68,477	0.85	1,449	1.22	1,028	1.82
May	26,820	1.16	68,123	0.95	884	1.27	1,049	1.98
June	23,164	1.19	68,015	0.95	824	1.19	1,124	2.01
July	23,334	1.14	63,468	0.88	834	1.21	1,047	1.83
August	24,640	1.08	68,658	0.81	1,503	1.14	828	1.82
September	26,418	1.15	65,655	0.88	719	1.35	1,009	1.85
October	31,914	1.15	67,733	0.96	668	1.33	1,010	1.98
November	31,166	1.30	64,660	1.01	1,397	1.09	1,258	2.04
December	33,000	1.30	71,451	1.08	1,496	1.10	1,377	2.36
Total	335,866	1.23	823,478	0.94	13,075	1.23	13,236	2.05
1996								
January	28,846	1.32	70,890	1.14	1,717	1.13	1,094	2.99
February	26,907	1.30	63,462	1.13	1,787	1.15	1,017	2.69
March	27,998	1.20	67,378	1.07	1,515	1.13	822	2.65
April	29,522	1.02	63,802	0.97	862	1.16	1,170	2.78
May	31,119	1.02	71,599	0.96	1,149	1.14	1,374	2.54
June	25,397	1.03	68,369	0.96	2,301	1.00	1,254	2.65
July	29,278	1.14	69,350	1.06	594	1.09	1,448	2.92
August	28,358	1.19	72,691	1.17	485	1.13	1,218	2.91
September	31,892	1.12	71,589	1.09	777	1.11	1,349	2.38
October	31,846	1.24	72,952	1.15	1,055	1.08	1,010	2.53
November	33,330	2.14	74,184	1.60	1,847	1.22	1,779	2.86
December	32,217	3.16	75,849	2.20	2,458	1.40	1,366	3.05
Total	356,711	1.43	842,114	1.22	16,545	1.16	14,901	2.75

See footnotes at the end of table.

Table SR6. U.S. Natural Gas Imports by Point of Entry, 1995-1996 (Continued)
 (Volume in Million Cubic Feet; Average Price in Dollars per Thousand Cubic Feet)

Year and Month	Canada (Pipeline)							
	Midwest							
	Harve, MT		International Falls, MN		Marysville, MI		Noyes, MN	
	Volume	Average Price	Volume	Average Price	Volume	Average Price	Volume	Average Price
1995								
January	0	-	581	2.18	0	-	35,891	1.85
February	0	-	574	2.05	0	-	35,956	1.65
March	0	-	582	2.02	0	-	34,991	1.66
April	0	-	524	2.18	0	-	32,382	1.74
May	0	-	411	2.53	0	-	31,754	1.82
June	0	-	399	2.56	0	-	31,896	1.87
July	1,362	0.81	419	2.28	0	-	33,088	1.72
August	1,526	0.76	378	2.31	0	-	33,108	1.66
September	69	0.79	378	2.43	0	-	33,375	1.76
October	0	-	464	2.21	0	-	29,500	1.81
November	0	-	527	1.51	0	-	33,138	1.87
December	0	-	503	1.62	0	-	35,105	2.16
Total	2,958	0.78	5,740	2.13	0	-	400,184	1.80
1996								
January	0	-	545	1.83	0	-	35,962	2.64
February	0	-	495	1.83	10	3.48	32,842	2.29
March	0	-	559	1.78	0	-	34,892	2.48
April	0	-	521	1.69	0	-	31,383	2.44
May	0	-	514	1.51	0	-	34,559	2.16
June	0	-	478	1.44	0	-	32,217	2.23
July	0	-	494	1.46	0	-	32,636	2.38
August	0	-	496	1.50	0	-	30,988	2.23
September	0	-	479	1.48	0	-	30,558	1.93
October	0	-	479	1.55	0	-	31,733	1.95
November	0	-	647	1.79	0	-	31,863	2.56
December	0	-	666	2.37	0	-	34,782	3.33
Total	0	-	6,373	1.71	10	3.48	394,415	2.40

See footnotes at the end of table.

Table SR6. U.S. Natural Gas Imports by Point of Entry, 1995-1996 (Continued)
 (Volume in Million Cubic Feet; Average Price in Dollars per Thousand Cubic Feet)

Year and Month	Canada (Pipeline)									
	Midwest									
	Port of Del Bonita, MT		Port of Morgan, MT		Portal, ND		St Clair, MI		Warroad, MN	
	Volume	Average Price	Volume	Average Price	Volume	Average Price	Volume	Average Price	Volume	Average Price
1995										
January	6	1.39	48,554	1.28	197	1.21	2,979	1.55	83	2.36
February	7	1.39	41,670	1.10	155	0.95	3,138	1.72	79	2.38
March	12	1.39	47,127	1.03	191	0.93	854	1.85	61	2.51
April	10	1.39	46,130	1.10	212	0.95	64	1.64	190	2.24
May	8	1.39	46,032	1.17	363	1.04	28	1.71	168	2.34
June	3	1.39	43,571	1.16	290	1.03	316	1.70	152	2.44
July	3	1.39	45,537	1.09	593	0.92	2,547	1.66	13	4.66
August	0	-	47,776	1.07	571	0.77	1,710	1.46	13	4.80
September	0	-	44,368	1.23	517	0.86	200	1.59	21	3.67
October	0	-	47,052	1.32	498	0.87	0	-	26	2.77
November	8	1.39	39,832	1.41	574	1.12	180	2.15	68	1.41
December	8	1.39	49,319	1.72	399	1.17	1,224	2.91	85	1.75
Total	65	1.39	546,969	1.23	4,559	0.97	13,239	1.76	959	2.34
1996										
January	7	1.05	49,129	1.83	313	1.18	2,015	3.66	147	2.51
February	5	1.05	45,015	1.72	292	1.07	660	4.22	142	2.03
March	7	1.06	48,752	1.79	312	1.07	191	5.05	76	1.98
April	7	1.04	46,255	1.97	521	1.02	2,204	2.93	50	2.15
May	7	1.04	47,947	1.75	535	1.00	793	2.34	32	1.63
June	3	1.04	45,901	1.75	606	1.00	583	2.59	5	1.67
July	7	1.02	45,262	1.85	657	1.11	475	2.60	14	1.99
August	6	1.02	44,888	1.82	630	1.13	1,471	2.43	14	1.72
September	6	1.02	42,447	1.44	609	1.12	1,795	2.11	17	1.21
October	6	1.05	45,761	1.60	630	1.16	1,504	2.54	32	1.21
November	6	1.05	44,399	2.25	494	1.77	378	3.35	73	1.87
December	5	1.05	47,318	3.10	512	2.60	2,064	4.04	83	2.96
Total	72	1.04	553,073	1.91	6,110	1.27	14,132	3.04	685	2.14

See footnotes at the end of table.

Table SR6. U.S. Natural Gas Imports by Point of Entry, 1995-1996 (Continued)
 (Volume in Million Cubic Feet; Average Price in Dollars per Thousand Cubic Feet)

Year and Month	Canada (Pipeline)									
	Midwest				Northeast					
	Whitlash, MT		Total		Champlain, NY		Grand Island, NY		Highgate Springs, VT	
	Volume	Average Price	Volume	Average Price	Volume	Average Price	Volume	Average Price	Volume	Average Price
1995										
January	643	1.41	91,111	1.54	1,468	3.14	3,470	2.30	972	2.30
February	681	1.35	84,239	1.38	1,317	3.15	3,582	2.24	982	2.13
March	678	1.42	87,146	1.32	1,463	3.14	4,561	2.04	805	2.18
April	431	1.45	82,420	1.38	1,268	3.15	3,061	2.27	662	2.22
May	455	1.46	81,152	1.45	1,418	3.15	2,944	2.37	394	3.08
June	407	1.45	78,982	1.47	1,453	3.15	3,639	2.31	290	3.73
July	452	1.45	85,896	1.36	1,427	3.15	4,302	2.09	275	3.95
August	392	1.45	87,806	1.31	1,461	3.15	4,250	2.01	277	3.86
September	825	1.22	81,480	1.46	1,424	3.15	4,106	2.17	298	3.58
October	1,049	1.24	80,269	1.51	1,452	3.15	4,069	2.22	442	3.23
November	642	1.44	77,622	1.61	1,157	3.27	5,858	2.29	820	2.14
December	675	1.43	90,191	1.90	1,422	3.27	6,777	2.62	1,201	1.98
Total	7,330	1.38	1,008,314	1.48	16,728	3.17	50,619	2.26	7,417	2.51
1996										
January	616	1.14	91,544	2.18	1,454	3.26	6,875	3.59	1,181	2.74
February	569	1.25	82,835	1.96	1,377	3.27	6,347	3.50	1,050	2.38
March	625	1.21	87,753	2.06	1,459	3.26	3,134	3.29	981	2.63
April	578	1.11	83,550	2.16	1,337	3.26	2,988	3.13	583	3.28
May	556	1.01	87,465	1.91	1,372	3.27	3,180	2.82	426	3.55
June	542	0.93	83,889	1.92	1,317	3.27	2,092	2.96	283	3.75
July	557	0.93	82,143	2.07	1,378	3.27	2,317	3.08	232	4.78
August	504	0.99	80,700	1.99	1,387	3.28	2,236	2.94	272	3.83
September	520	0.98	78,557	1.65	1,330	3.27	2,097	2.82	309	3.24
October	553	1.02	82,761	1.75	1,305	3.25	2,122	2.74	655	2.52
November	565	1.21	82,050	2.35	953	3.39	3,385	3.32	840	2.59
December	636	1.71	89,889	3.15	1,435	3.40	6,058	4.11	898	3.07
Total	6,820	1.14	1,013,137	2.10	16,104	3.29	42,832	3.35	7,711	2.92

See footnotes at the end of table.

Table SR6. U.S. Natural Gas Imports by Point of Entry, 1995-1996 (Continued)
 (Volume in Million Cubic Feet; Average Price in Dollars per Thousand Cubic Feet)

Year and Month	Canada (Pipeline)							
	Northeast							
	Massena, NY		Niagara Falls, NY		North Troy, VT		Waddington, NY	
	Volume	Average Price	Volume	Average Price	Volume	Average Price	Volume	Average Price
1995								
January	1,783	2.97	23,392	2.32	979	2.42	23,853	2.29
February	2,029	2.52	22,259	2.24	951	2.45	23,241	2.20
March	1,810	2.55	23,146	2.20	990	2.36	25,373	2.15
April	1,463	2.51	20,261	2.24	871	2.58	21,342	2.12
May	1,234	2.86	19,876	2.34	932	2.58	22,791	2.18
June	1,305	2.83	18,793	2.33	657	3.06	21,158	2.24
July	1,115	2.90	21,099	2.25	903	2.45	20,834	2.14
August	1,097	2.88	22,016	2.15	946	2.47	22,268	2.04
September	1,201	2.80	20,946	2.22	928	2.53	21,381	2.11
October	1,279	2.68	23,545	2.24	962	2.50	22,619	2.18
November	1,596	2.65	25,453	2.38	931	2.60	24,595	2.35
December	1,809	2.63	29,142	2.66	962	2.81	25,873	2.65
Total	17,720	2.71	269,928	2.31	11,012	2.55	275,326	2.23
1996								
January	1,759	2.94	29,448	3.23	958	2.96	26,701	3.24
February	1,594	3.06	22,481	3.02	902	3.22	23,591	3.15
March	1,663	3.03	22,065	2.97	964	2.97	24,272	3.15
April	1,251	2.84	25,053	2.85	932	2.98	21,911	2.89
May	703	3.25	25,583	2.63	957	2.74	23,117	2.72
June	792	2.91	20,824	2.64	927	2.74	21,984	2.70
July	824	2.84	22,394	2.86	952	2.83	24,040	2.75
August	794	2.92	23,700	2.71	792	2.73	24,268	2.57
September	838	2.85	23,587	2.59	789	2.92	23,217	2.33
October	962	2.63	24,056	2.59	955	3.01	23,679	2.43
November	1,200	2.78	24,042	2.94	933	3.28	24,876	3.10
December	1,262	2.92	27,959	3.54	964	3.60	27,151	3.75
Total	13,642	2.92	291,193	2.90	11,024	3.00	288,807	2.92

See footnotes at the end of table.

Table SR6. U.S. Natural Gas Imports by Point of Entry, 1995-1996 (Continued)
 (Volume in Million Cubic Feet; Average Price in Dollars per Thousand Cubic Feet)

Year and Month	Canada (Pipeline)				Mexico (Pipeline)					
	Northeast		Total		Texas				Total	
	Total				Hidalgo, TX		Penitas, TX			
	Volume	Average Price	Volume	Average Price	Volume	Average Price	Volume	Average Price	Volume	Average Price
1995										
January	55,917	2.35	250,666	1.59	0	-	158	1.38	158	1.38
February	54,360	2.26	233,404	1.45	0	-	0	-	0	-
March	58,147	2.20	247,578	1.39	150	1.50	0	-	150	1.50
April	48,929	2.23	231,745	1.37	0	-	0	-	0	-
May	49,588	2.31	225,682	1.45	0	-	0	-	0	-
June	47,295	2.34	217,456	1.47	0	-	0	-	0	-
July	49,955	2.24	222,652	1.40	0	-	0	-	0	-
August	52,314	2.15	233,419	1.33	824	1.53	0	-	824	1.53
September	50,284	2.22	223,836	1.43	3,872	1.53	0	-	3,872	1.53
October	54,368	2.26	234,284	1.48	1,095	1.57	623	1.54	1,718	1.56
November	60,408	2.38	233,857	1.60	0	-	0	-	0	-
December	67,185	2.65	261,828	1.79	0	-	0	-	0	-
Total	648,750	2.31	2,816,408	1.48	5,941	1.53	781	1.51	6,722	1.53
1996										
January	68,376	3.25	259,656	2.08	1,499	2.03	0	-	1,499	2.03
February	57,342	3.12	230,546	1.94	698	2.14	0	-	698	2.14
March	54,539	3.07	237,668	1.91	1,259	2.34	0	-	1,259	2.34
April	54,054	2.90	230,928	1.86	1,369	2.18	0	-	1,369	2.18
May	55,339	2.71	245,522	1.70	4,024	2.14	0	-	4,024	2.14
June	48,220	2.71	225,875	1.70	711	2.35	0	-	711	2.35
July	52,137	2.84	232,908	1.82	1,313	2.58	0	-	1,313	2.58
August	53,450	2.68	235,199	1.80	30	1.70	0	-	30	1.70
September	52,168	2.51	234,206	1.60	517	1.67	253	1.72	770	1.69
October	53,734	2.55	241,294	1.68	1,110	2.37	0	-	1,110	2.37
November	56,230	3.04	245,795	2.25	982	2.85	0	-	982	2.85
December	65,727	3.66	263,681	3.00	96	3.30	0	-	96	3.30
Total	671,314	2.94	2,883,277	1.96	13,609	2.26	253	1.72	13,862	2.25

See footnotes at the end of table.

Table SR6. U.S. Natural Gas Imports by Point of Entry, 1995-1996 (Continued)
 (Volume in Million Cubic Feet; Average Price in Dollars per Thousand Cubic Feet)

Year and Month	LNG						Total	
	Everett, MA		Lake Charles, LA		Total			
	Volume	Average Price	Volume	Average Price	Volume	Average Price	Volume	Average Price
1995								
January	2,511	2.40	0	-	2,511	2.40	253,335	1.60
February	0	-	2,573	1.81	2,573	1.81	235,977	1.46
March	2,621	2.45	0	-	2,621	2.45	250,349	1.40
April	0	-	0	-	0	-	231,745	1.37
May	0	-	2,576	1.89	2,576	1.89	228,259	1.46
June	0	-	0	-	0	-	217,456	1.47
July	0	-	0	-	0	-	222,652	1.40
August	2,648	2.42	0	-	2,648	2.42	236,891	1.34
September	0	-	0	-	0	-	227,708	1.43
October	0	-	0	-	0	-	236,003	1.48
November	2,487	2.47	0	-	2,487	2.47	236,344	1.61
December	2,502	2.65	0	-	2,502	2.65	264,329	1.80
Total	12,769	2.48	5,149	1.85	17,918	2.30	2,841,048	1.49
1996								
January	2,460	2.81	0	-	2,460	2.81	263,615	2.09
February	2,512	2.79	0	-	2,512	2.79	233,756	1.95
March	2,599	3.06	0	-	2,599	3.06	241,526	1.92
April	2,599	2.55	1,960	2.27	4,559	2.43	236,857	1.87
May	2,612	2.58	0	-	2,612	2.58	252,158	1.72
June	0	-	0	-	0	-	226,587	1.70
July	2,642	3.00	0	-	2,642	3.00	236,864	1.84
August	2,629	2.56	0	-	2,629	2.56	237,858	1.80
September	2,524	3.34	0	-	2,524	3.34	237,500	1.62
October	5,116	2.96	0	-	5,116	2.96	247,520	1.71
November	2,504	2.94	2,527	2.25	5,031	2.59	251,807	2.26
December	5,033	3.20	2,556	2.16	7,589	2.85	271,366	3.00
Total	33,232	2.92	7,042	2.22	40,274	2.80	2,937,413	1.97

- = Not applicable.

Notes: Totals may not equal sum of components due to independent rounding. Geographic coverage is the continental United States including Alaska.

Source: Office of Fossil Energy, U.S. Department of Energy, *Natural Gas Imports and Exports*.

Table SR7. Summary of U.S. Natural Gas Imports, 1977-1996
 (Volume in Million Cubic Feet; Average Price in Dollars per Thousand Cubic Feet)

Year and Month	Pipeline				Total Pipeline	
	Canada		Mexico		Volume	Average Price
	Volume	Average Price	Volume	Average Price		
1977 Total	996,722	1.99	2,384	2.25	999,106	1.99
1978 Total	881,123	2.19	0	-	881,123	2.19
1979 Total	1,000,775	2.61	0	-	1,000,775	2.61
1980 Total	796,507	4.32	102,410	4.41	898,917	4.33
1981 Total	762,107	4.83	105,013	5.01	867,120	4.85
1982 Total	783,407	4.97	94,794	5.02	878,200	4.98
1983 Total	711,923	4.49	75,361	4.70	787,284	4.51
1984 Total	755,368	4.01	51,502	4.49	806,870	4.04
1985 Total	926,056	3.17	0	-	926,056	3.17
1986 Total	748,780	2.42	0	-	748,780	2.42
1987 Total	992,532	1.95	0	-	992,532	1.95
1988 Total	1,276,322	1.83	0	-	1,276,322	1.83
1989 Total	1,339,357	1.81	0	-	1,339,357	1.81
1990 Total	1,448,065	1.91	0	-	1,448,065	1.91
1991 Total	1,709,716	1.81	0	-	1,709,716	1.81
1992 Total	2,094,387	1.84	0	-	2,094,387	1.84
1993 Total	2,266,751	2.02	1,678	1.94	2,268,429	2.02
1994 Total	2,566,049	1.86	7,013	1.99	2,573,061	1.86
1995						
January	250,666	1.59	158	1.38	250,824	1.59
February	233,404	1.45	0	-	233,404	1.45
March	247,578	1.39	150	1.50	247,728	1.39
April	231,745	1.37	0	-	231,745	1.37
May	225,682	1.45	0	-	225,682	1.45
June	217,456	1.47	0	-	217,456	1.47
July	222,652	1.40	0	-	222,652	1.40
August	233,419	1.33	824	1.53	234,242	1.33
September	223,836	1.43	3,872	1.53	227,708	1.43
October	234,284	1.48	1,718	1.56	236,003	1.48
November	233,857	1.60	0	-	233,857	1.60
December	261,828	1.79	0	-	261,828	1.79
Total	2,816,408	1.48	6,722	1.53	2,823,130	1.48
1996						
January	259,656	2.08	1,499	2.03	261,155	2.08
February	230,546	1.94	698	2.14	231,244	1.94
March	237,668	1.91	1,259	2.34	238,927	1.91
April	230,928	1.86	1,369	2.18	232,297	1.86
May	245,522	1.70	4,024	2.14	249,546	1.71
June	225,875	1.70	711	2.35	226,587	1.70
July	232,908	1.82	1,313	2.58	234,221	1.83
August	235,199	1.80	30	1.70	235,229	1.80
September	234,206	1.60	770	1.69	234,976	1.60
October	241,294	1.68	1,110	2.37	242,403	1.68
November	245,795	2.25	982	2.85	246,776	2.25
December	263,681	3.00	96	3.30	263,777	3.00
Total	2,883,277	1.96	13,862	2.25	2,897,138	1.96

See footnotes at the end of table.

Table SR7. Summary of U.S. Natural Gas Imports, 1977-1996 (Continued)
(Volume in Million Cubic Feet; Average Price in Dollars per Thousand Cubic Feet)

Year and Month	LNG						Grand Total	
	Algeria		Canada		Other		Volume	Average Price
	Volume	Average Price	Volume	Average Price	Volume	Average Price		
1977 Total	11,324	0.92	572	3.96	0	-	1,011,002	1.98
1978 Total	84,422	1.53	0	-	0	-	965,545	2.13
1979 Total	252,608	2.03	0	-	0	-	1,253,383	2.49
1980 Total	85,850	3.77	0	-	0	-	984,767	4.28
1981 Total	36,824	5.54	6	6.63	0	-	903,949	4.88
1982 Total	55,136	5.82	0	-	0	-	933,336	5.03
1983 Total	131,124	6.41	0	-	0	-	918,407	4.78
1984 Total	36,191	4.90	0	-	0	-	843,060	4.08
1985 Total	23,659	4.60	0	-	0	-	949,715	3.21
1986 Total	0	-	0	-	^a 1,669	4.62	750,449	2.43
1987 Total	0	-	0	-	0	-	992,532	1.95
1988 Total	17,490	2.71	0	-	0	-	1,293,812	1.84
1989 Total	42,163	2.22	0	-	0	-	1,381,520	1.82
1990 Total	84,193	2.47	0	-	0	-	1,532,259	1.94
1991 Total	63,596	2.36	0	-	0	-	1,773,313	1.83
1992 Total	43,116	2.54	0	-	0	-	2,137,504	1.85
1993 Total	81,685	2.20	0	-	0	-	2,350,115	2.03
1994 Total	50,778	2.28	0	-	0	-	2,623,839	1.87
1995								
January	2,511	2.40	0	-	0	-	253,335	1.60
February	2,573	1.81	0	-	0	-	235,977	1.46
March	2,621	2.45	0	-	0	-	250,349	1.40
April	0	-	0	-	0	-	231,745	1.37
May	2,576	1.89	0	-	0	-	228,259	1.46
June	0	-	0	-	0	-	217,456	1.47
July	0	-	0	-	0	-	222,652	1.40
August	2,648	2.42	0	-	0	-	236,891	1.34
September	0	-	0	-	0	-	227,708	1.43
October	0	-	0	-	0	-	236,003	1.48
November	2,487	2.47	0	-	0	-	236,344	1.61
December	2,502	2.65	0	-	0	-	264,329	1.80
Total	17,918	2.30	0	-	0	-	2,841,048	1.49
1996								
January	2,460	2.81	0	-	0	-	263,615	2.09
February	2,512	2.79	0	-	0	-	233,756	1.95
March	2,599	3.06	0	-	0	-	241,526	1.92
April	4,559	2.43	0	-	0	-	236,857	1.87
May	2,612	2.58	0	-	0	-	252,158	1.72
June	0	-	0	-	0	-	226,587	1.70
July	2,642	3.00	0	-	0	-	236,864	1.84
August	2,629	2.56	0	-	0	-	237,858	1.80
September	0	-	0	-	^b 2,524	3.34	237,500	1.62
October	5,116	2.96	0	-	0	-	247,520	1.71
November	5,031	2.59	0	-	0	-	251,807	2.26
December	5,164	2.51	0	-	^b 2,425	3.57	271,366	3.00
Total	35,325	2.70	0	-	4,949	3.46	2,937,413	1.97

^a Received from Indonesia.

^b Received from United Arab Emirates.

- = Not applicable.

Notes: Totals may not equal sum of components due to independent rounding. Geographic coverage is the continental United States including Alaska.

Source: 1994 and Earlier Years: Energy Information Administration, Form FPC-14, "Annual Report for Importers and Exporters of Natural Gas". 1995 and 1996: Office of Fossil Energy, U.S. Department of Energy, *Natural Gas Imports and Exports*.

Table SR8. U.S. Natural Gas Exports by Point of Exit, 1995-1996
 (Volume in Million Cubic Feet; Average Price in Dollars per Thousand Cubic Feet)

Year and Month	Canada (Pipeline)							
	Sumas, WA		Babb, MT		Detroit, MI		Marysville, MI	
	Volume	Average Price	Volume	Average Price	Volume	Average Price	Volume	Average Price
1995								
January	422	1.47	0	-	1,129	2.05	0	-
February	183	1.09	0	-	1,002	2.07	0	-
March	0	-	0	-	204	1.43	0	-
April	0	-	0	-	1,052	1.67	0	-
May	0	-	0	-	1,094	1.87	0	-
June	0	-	0	-	842	1.55	0	-
July	0	-	0	-	1,605	1.62	0	-
August	0	-	0	-	1,288	1.60	0	-
September	0	-	0	-	1,114	2.33	0	-
October	0	-	0	-	1,350	1.81	0	-
November	0	-	0	-	302	2.03	0	-
December	0	-	0	-	0	-	0	-
Total	605	1.36	0	-	10,980	1.83	0	-
1996								
January	373	1.70	0	-	1,299	3.03	354	3.17
February	79	1.60	0	-	2,776	2.32	234	2.79
March	0	-	0	-	4,046	2.51	0	-
April	0	-	0	-	2,085	2.12	0	-
May	0	-	0	-	2,634	2.11	50	2.45
June	0	-	0	-	2,155	2.10	0	-
July	0	-	0	-	2,296	2.20	0	-
August	0	-	0	-	1,850	2.21	0	-
September	0	-	0	-	2,284	1.86	0	-
October	0	-	0	-	3,549	1.85	0	-
November	239	3.63	63	1.46	2,804	2.50	0	-
December	760	3.23	27	1.70	2,631	3.71	0	-
Total	1,451	2.81	91	1.53	30,410	2.36	638	2.97

See footnotes at the end of table.

Table SR8. U.S. Natural Gas Exports by Point of Exit, 1995-1996 (Continued)
 (Volume in Million Cubic Feet; Average Price in Dollars per Thousand Cubic Feet)

Year and Month	Canada (Pipeline)				Mexico (Pipeline)					
	St Clair, MI		Total		Douglas, AZ		Eagle Pass, TX		El Paso, TX	
	Volume	Average Price	Volume	Average Price	Volume	Average Price	Volume	Average Price	Volume	Average Price
1995										
January	967	2.15	2,518	2.00	0	-	0	-	1,511	1.63
February	831	2.17	2,016	2.02	0	-	0	-	1,272	1.32
March	2,183	1.97	2,387	1.92	0	-	0	-	1,551	1.31
April	1,405	1.96	2,457	1.84	0	-	0	-	1,219	1.42
May	837	2.19	1,931	2.01	0	-	0	-	1,182	1.46
June	1,264	2.15	2,106	1.91	0	-	0	-	2,166	1.51
July	842	2.19	2,446	1.82	0	-	0	-	2,095	1.33
August	1,270	1.94	2,558	1.77	0	-	0	-	1,365	1.31
September	2,222	1.88	3,336	2.03	0	-	0	-	1,142	1.48
October	1,579	1.99	2,929	1.91	0	-	0	-	1,211	1.51
November	1,325	2.25	1,627	2.21	0	-	0	-	1,176	1.59
December	1,244	2.43	1,244	2.43	42	1.53	0	-	1,168	1.80
Total	15,968	2.07	27,554	1.96	42	1.53	0	-	17,059	1.46
1996										
January	5,019	3.25	7,044	3.13	102	1.37	124	2.38	1,382	1.98
February	2,117	3.25	5,207	2.71	3	1.34	97	2.06	1,069	1.76
March	2,570	3.22	6,616	2.79	85	1.15	85	2.18	846	1.61
April	345	2.79	2,430	2.21	166	1.31	69	2.48	862	1.95
May	126	2.94	2,809	2.15	690	1.73	62	2.34	1,148	1.89
June	845	2.64	3,001	2.25	718	1.56	56	2.46	811	2.01
July	1,481	2.84	3,777	2.45	239	1.47	48	2.65	1,238	2.24
August	347	2.78	2,197	2.30	230	2.00	56	2.44	1,731	2.12
September	230	2.76	2,514	1.94	220	1.55	58	2.01	810	1.61
October	762	2.52	4,311	1.97	267	1.62	78	1.98	1,264	1.90
November	3,671	2.95	6,776	2.77	253	2.46	94	2.77	1,186	2.56
December	1,803	3.82	5,222	3.67	433	3.63	116	3.84	1,060	3.76
Total	19,315	3.13	51,905	2.67	3,405	1.92	942	2.52	13,406	2.14

See footnotes at the end of table.

Table SR8. U.S. Natural Gas Exports by Point of Exit, 1995-1996 (Continued)
 (Volume in Million Cubic Feet; Average Price in Dollars per Thousand Cubic Feet)

Year and Month	Mexico (Pipeline)						Japan (LNG)		Total	
	Hidalgo, TX		Penitas, TX		Total		Port Nikiski, AK			
	Volume	Average Price	Volume	Average Price	Volume	Average Price	Volume	Average Price	Volume	Average Price
1995										
January	810	1.46	3,255	1.51	5,576	1.54	5,541	3.35	13,635	2.36
February	458	1.40	3,812	1.31	5,542	1.32	5,557	3.38	13,115	2.30
March	1,493	1.45	3,627	1.34	6,670	1.36	5,573	3.39	14,630	2.22
April	2,169	1.57	2,553	1.46	5,941	1.49	3,741	3.47	12,138	2.17
May	1,834	1.65	3,833	1.58	6,848	1.58	3,698	3.54	12,477	2.23
June	945	1.65	4,833	1.61	7,945	1.59	5,556	3.59	15,606	2.34
July	896	1.42	3,535	1.42	6,526	1.39	5,581	3.58	14,552	2.30
August	0	-	2,066	1.28	3,431	1.29	7,531	3.47	13,520	2.60
September	0	-	1,236	1.46	2,378	1.47	5,656	3.36	11,370	2.58
October	2,705	1.69	1,672	1.63	5,588	1.63	3,733	3.30	12,250	2.21
November	179	1.82	2,179	1.67	3,535	1.65	7,518	3.29	12,679	2.69
December	0	-	93	2.28	1,303	1.82	5,599	3.31	8,146	2.94
Total	11,488	1.58	32,694	1.48	61,283	1.50	65,283	3.41	154,119	2.39
1996										
January	0	-	0	-	1,607	1.98	5,534	3.38	14,186	3.10
February	0	-	831	1.89	2,000	1.82	5,621	3.35	12,828	2.85
March	0	-	1,845	1.91	2,860	1.81	5,642	3.55	15,118	2.88
April	827	1.44	0	-	1,924	1.69	5,654	3.57	10,008	2.88
May	0	-	0	-	1,899	1.84	3,750	3.61	8,458	2.73
June	1,242	2.44	660	2.43	3,486	2.16	5,651	3.65	12,138	2.87
July	666	2.39	870	2.30	3,062	2.24	7,546	3.66	14,385	3.04
August	3,719	2.13	3,440	2.10	9,176	2.11	5,663	3.67	17,036	2.65
September	457	1.92	844	1.78	2,389	1.73	5,663	3.73	10,566	2.85
October	380	1.79	0	-	1,990	1.85	5,589	3.84	11,889	2.83
November	0	-	0	-	1,533	2.56	5,670	4.01	13,979	3.25
December	305	3.63	0	-	1,914	3.72	5,665	3.73	12,801	3.70
Total	7,597	2.16	8,489	2.05	33,840	2.11	67,648	3.65	153,393	2.97

- = Not applicable.

Notes: Totals may not equal sum of components due to independent rounding. Geographic coverage is the continental United States including Alaska.

Source: Office of Fossil Energy, U.S. Department of Energy, *Natural Gas Imports and Exports*.

Table SR9. Summary of U.S. Natural Gas Exports, 1977-1996
(Volume in Million Cubic Feet; Average Price in Dollars per Thousand Cubic Feet)

Year and Month	Pipeline				Total Pipeline		LNG		Grand Total	
	Canada		Mexico		Volume	Average Price	Japan		Volume	Average Price
	Volume	Average Price	Volume	Average Price			Volume	Average Price		
1977 Total	31	1.54	3,940	1.41	3,971	1.41	51,655	1.96	55,626	1.92
1978 Total	66	1.79	4,003	1.65	4,098	1.66	48,434	2.17	52,532	2.13
1979 Total	76	2.04	4,308	1.97	4,384	1.97	51,289	2.32	55,673	2.29
1980 Total	113	3.31	3,886	2.47	3,999	2.50	44,732	4.90	48,731	4.70
1981 Total	106	4.79	3,337	3.37	3,443	3.41	55,929	6.05	59,372	5.90
1982 Total	162	4.95	1,705	5.17	1,867	5.15	49,861	5.83	51,728	5.81
1983 Total	136	4.60	1,646	4.79	1,782	4.78	52,857	5.11	54,639	5.10
1984 Total	127	4.19	1,786	4.48	1,913	4.46	52,840	4.93	54,753	4.83
1985 Total	178	3.06	2,207	3.99	2,385	3.92	52,883	4.81	55,268	4.77
1986 Total	9,203	2.12	1,896	3.49	11,099	2.35	50,172	2.91	61,271	2.81
1987 Total	3,297	1.81	2,125	3.18	5,421	2.35	48,599	3.15	54,020	3.07
1988 Total	19,738	2.02	2,327	3.21	22,065	2.14	51,573	2.99	73,638	2.74
1989 Total	38,443	2.00	17,004	2.14	55,447	2.05	51,424	3.01	106,871	2.51
1990 Total	17,359	2.70	15,659	1.88	33,018	2.31	52,546	3.59	85,565	3.10
1991 Total	14,791	1.91	60,448	1.76	75,239	1.79	54,005	3.71	129,244	2.59
1992 Total	67,777	1.83	95,973	1.90	163,750	1.88	52,532	3.43	216,282	2.25
1993 Total	44,518	2.14	39,676	2.02	84,195	2.08	55,989	3.34	140,183	2.59
1994 Total	52,556	2.42	46,500	1.68	99,057	2.08	62,682	3.18	161,738	2.50
1995										
January	2,518	2.00	5,576	1.54	8,094	1.68	5,541	3.35	13,635	2.36
February	2,016	2.02	5,542	1.32	7,558	1.51	5,557	3.38	13,115	2.30
March	2,387	1.92	6,670	1.36	9,057	1.51	5,573	3.39	14,630	2.22
April	2,457	1.84	5,941	1.49	8,397	1.59	3,741	3.47	12,138	2.17
May	1,931	2.01	6,848	1.58	8,779	1.67	3,698	3.54	12,477	2.23
June	2,106	1.91	7,945	1.59	10,051	1.66	5,556	3.59	15,606	2.34
July	2,446	1.82	6,526	1.39	8,972	1.51	5,581	3.58	14,552	2.30
August	2,558	1.77	3,431	1.29	5,989	1.49	7,531	3.47	13,520	2.60
September	3,336	2.03	2,378	1.47	5,714	1.80	5,656	3.36	11,370	2.58
October	2,929	1.91	5,588	1.63	8,517	1.73	3,733	3.30	12,250	2.21
November	1,627	2.21	3,535	1.65	5,161	1.82	7,518	3.29	12,679	2.69
December	1,244	2.43	1,303	1.82	2,547	2.12	5,599	3.31	8,146	2.94
Total	27,554	1.96	61,283	1.50	88,836	1.64	65,283	3.41	154,119	2.39
1996										
January	7,044	3.13	1,607	1.98	8,651	2.91	5,534	3.38	14,186	3.10
February	5,207	2.71	2,000	1.82	7,206	2.46	5,621	3.35	12,828	2.85
March	6,616	2.79	2,860	1.81	9,476	2.49	5,642	3.55	15,118	2.88
April	2,430	2.21	1,924	1.69	4,354	1.98	5,654	3.57	10,008	2.88
May	2,809	2.15	1,899	1.84	4,709	2.03	3,750	3.61	8,458	2.73
June	3,001	2.25	3,486	2.16	6,487	2.20	5,651	3.65	12,138	2.87
July	3,777	2.45	3,062	2.24	6,839	2.35	7,546	3.66	14,385	3.04
August	2,197	2.30	9,176	2.11	11,373	2.15	5,663	3.67	17,036	2.65
September	2,514	1.94	2,389	1.73	4,903	1.84	5,663	3.73	10,566	2.85
October	4,311	1.97	1,990	1.85	6,301	1.93	5,589	3.84	11,889	2.83
November	6,776	2.77	1,533	2.56	8,309	2.73	5,670	4.01	13,979	3.25
December	5,222	3.67	1,914	3.72	7,136	3.68	5,665	3.73	12,801	3.70
Total	51,905	2.67	33,840	2.11	85,745	2.45	67,648	3.65	153,393	2.97

Notes: Totals may not equal sum of components due to independent rounding. Geographic coverage is the continental United States including Alaska.

Source: 1994 and Earlier Years: Energy Information Administration, Form FPC-14, "Annual Report for Importers and Exporters of Natural Gas." 1995 and 1996: Office of Fossil Energy, U.S. Department of Energy, *Natural Gas Imports and Exports*.