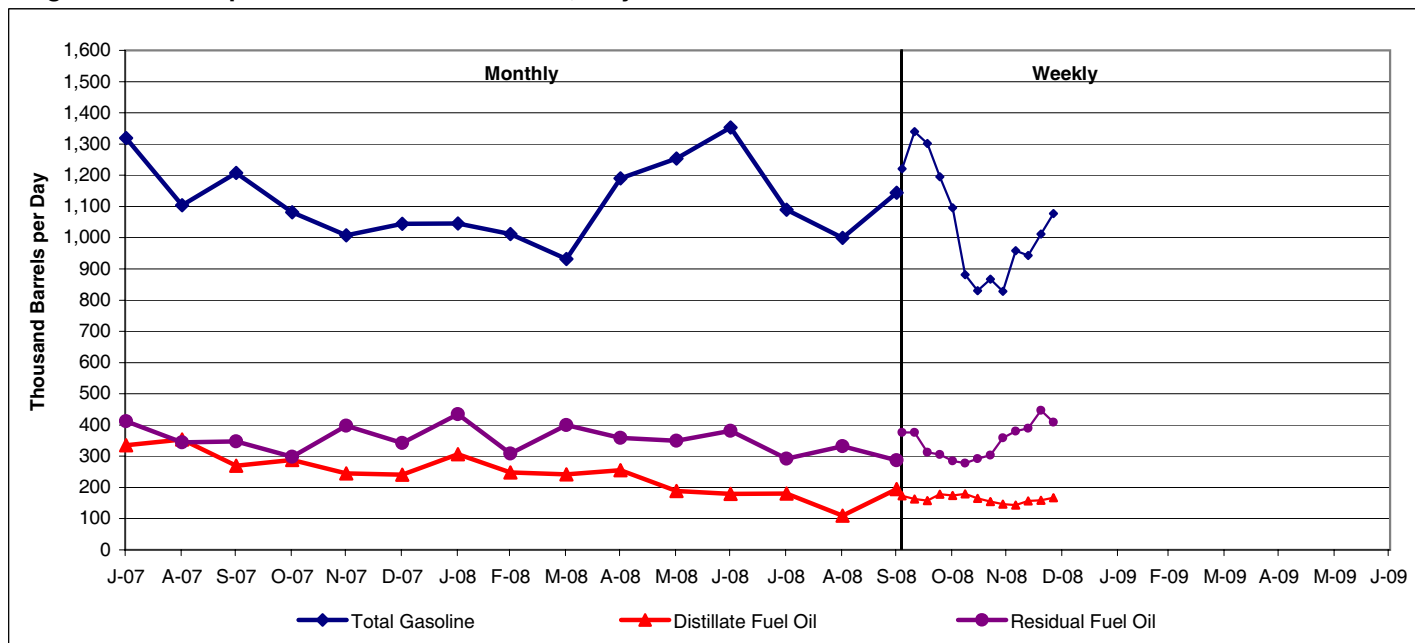


**Figure 9. U.S. Imports of Petroleum Products, July 2007 to Present**



**Table 9. U.S. Imports of Petroleum Products by Product, January 2007 to Present**  
(Thousand Barrels per Day)

Year/Product	Jan	Feb	Mar	Apr	May	Jun	Jul	Aug	Sep	Oct	Nov	Dec
<b>2007</b>												
Total Motor Gasoline	1,078	971	1,084	1,265	1,485	1,323	1,319	1,104	1,207	1,081	1,008	1,045
Reformulated	0	0	0	0	0	0	0	0	0	0	0	0
Conventional	408	372	361	498	581	441	434	404	478	319	303	351
Blending Components	669	598	723	767	904	883	885	700	729	762	705	694
Kerosene-Type Jet Fuel	175	227	249	316	227	215	263	226	202	184	180	136
Distillate Fuel Oil	352	334	360	323	274	273	335	354	270	288	245	241
15 ppm sulfur and Under	171	169	214	210	191	163	210	212	160	143	143	111
> 15 ppm to 500 ppm sulfur	9	25	4	28	8	13	4	18	5	25	4	12
> 500 ppm to 2000 ppm sulfur	129	90	104	73	55	62	78	90	72	99	74	103
> 2000 ppm sulfur	44	50	37	11	21	36	43	34	32	22	25	15
Residual Fuel Oil	394	314	510	374	360	360	412	344	347	299	397	342
Propane/Propylene	244	213	185	121	146	151	135	164	232	204	200	188
Other Petroleum Products <sup>1</sup>	1,251	1,107	1,190	1,283	1,384	1,215	1,350	1,126	1,081	1,139	1,153	1,083
<b>2008</b>												
Total Motor Gasoline	1,046	1,011	932	1,190	1,253	1,353	1,090	1,000	1,144			
Reformulated	0	0	0	0	0	0	0	0	0			
Conventional	412	354	374	386	383	461	323	205	253			
Blending Components	634	657	557	804	871	891	767	794	892			
Kerosene-Type Jet Fuel	159	101	98	180	140	91	72	76	88			
Distillate Fuel Oil	307	248	241	255	188	179	181	109	195			
15 ppm sulfur and Under	140	124	148	164	139	86	86	77	138			
> 15 ppm to 500 ppm sulfur	23	9	6	3	2	2	18	14	7			
> 500 ppm to 2000 ppm sulfur	120	103	70	79	39	84	65	14	46			
> 2000 ppm sulfur	24	12	17	9	8	8	12	4	4			
Residual Fuel Oil	435	308	400	359	350	382	292	332	288			
Propane/Propylene	253	205	216	154	159	97	128	185	186			
Other Petroleum Products <sup>1</sup>	1,293	1,125	1,046	1,191	1,114	1,272	1,200	1,073	1,205			
Average for Four-Week Period Ending:												
<b>2008</b>												
Total Motor Gasoline	1,340	1,302	1,195	1,096	881	830	867	828	958	943	1,012	1,077
Reformulated	10	10	10	10	0	0	0	0	0	0	0	0
Conventional	409	377	355	287	218	198	163	137	143	118	148	167
Blending Components	920	915	830	799	663	633	704	691	815	825	864	910
Kerosene-Type Jet Fuel	109	114	87	83	74	75	84	62	59	48	57	59
Distillate Fuel Oil	163	158	178	174	179	165	155	147	144	157	159	167
15 ppm sulfur and Under	115	108	107	110	119	113	108	93	93	96	93	93
> 15 ppm to 500 ppm	6	9	18	18	18	18	14	15	16	21	20	19
> 500 ppm to 2000 ppm sulfur	36	35	34	27	23	14	25	23	20	24	29	46
> 2000 ppm sulfur	6	7	19	19	20	20	8	16	15	16	17	10
Residual Fuel Oil	376	313	305	285	278	292	303	359	380	389	447	409
Propane/Propylene	176	174	147	189	214	193	220	209	210	244	240	230
Other Petroleum Products <sup>1</sup>	1,435	1,545	1,520	1,450	1,420	1,310	1,250	1,247	1,159	1,198	1,218	1,196

<sup>1</sup> Includes imports of kerosene, unfinished oils, liquefied petroleum gases (except propane/propylene), and other oils.

Source: See page 33.