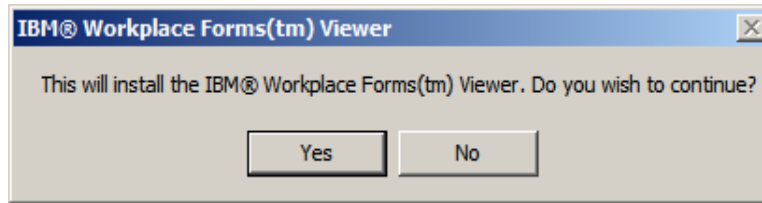
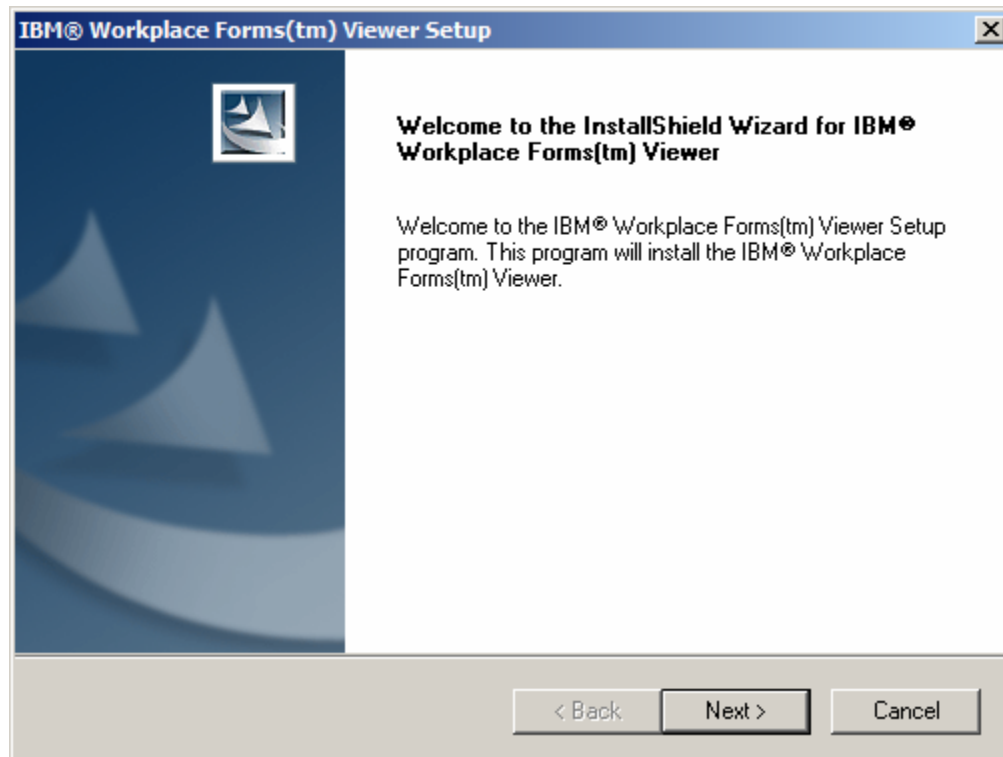


Install the Workplace Forms™ Viewer for Your Web Browser

1. [Download the Workplace Forms™ Viewer install program](#). A **File Download** window will appear.



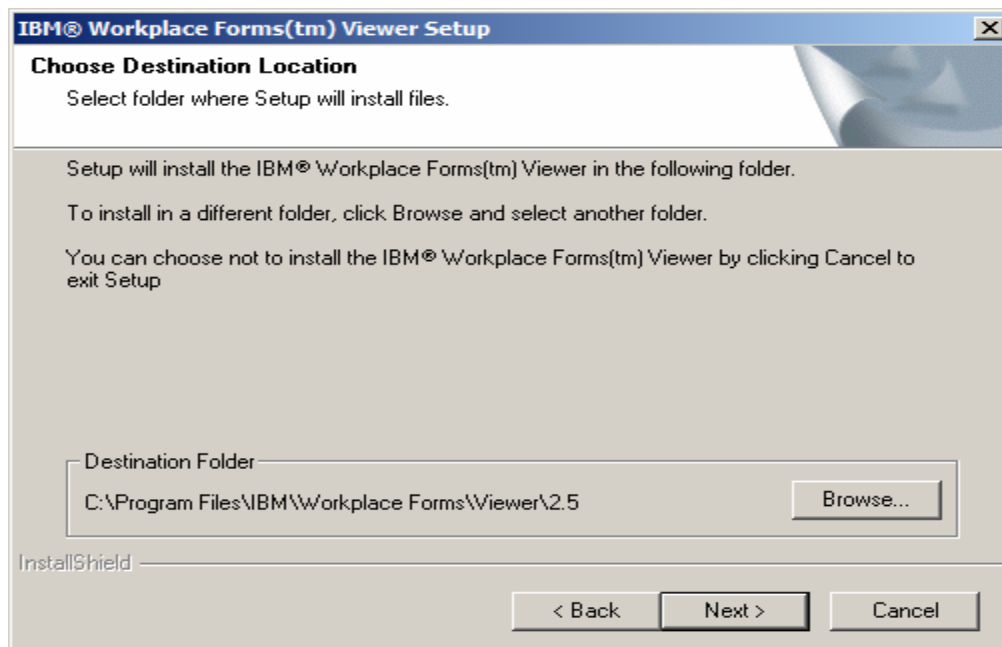
2. Select **Yes**. A **Workplace Forms™ Viewer Setup** window will appear.



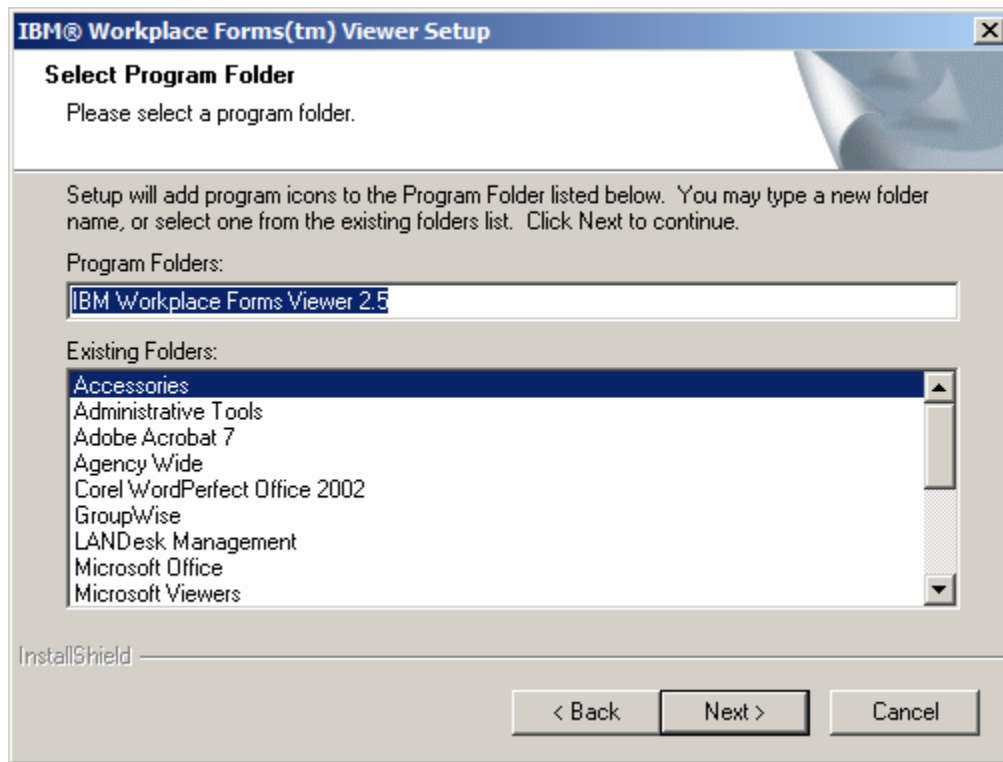
3. Select **Next**. The Software License Agreement window will appear. Read the agreement.



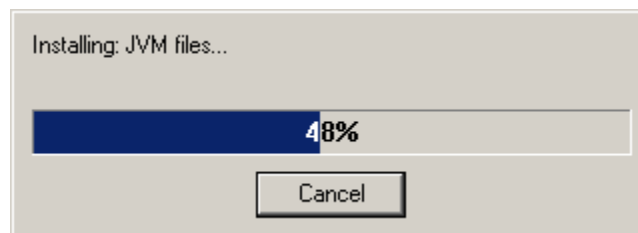
4. Select **Accept**. The **Choose Destination Location** window will appear.



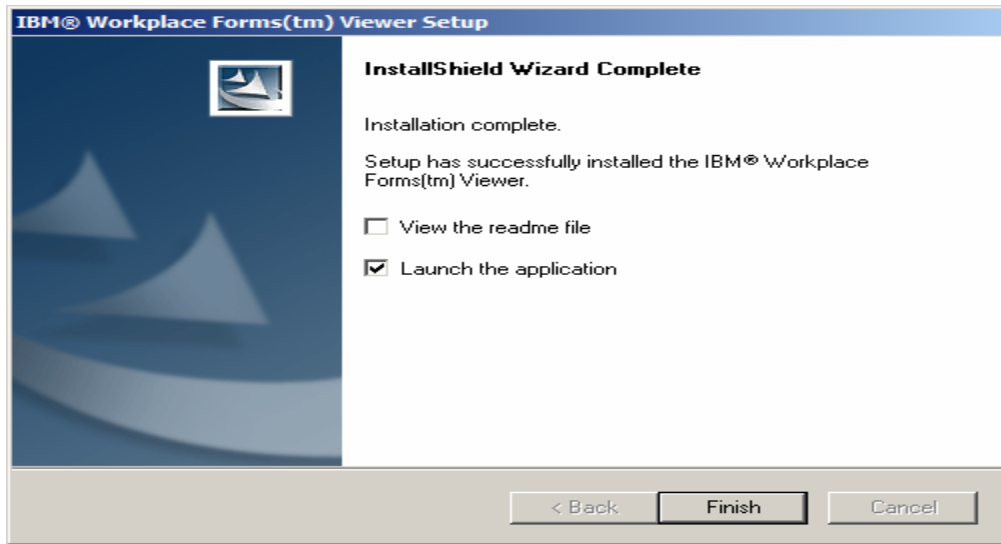
5. Accept the default destination *C:\Program Files\IBM\Workplace Forms\Viewer\2.5* by selecting **Next**.
6. A **Select Program Folder** window will appear. Accept the default for Existing Folders, *Accessories*, by selecting **Next**.



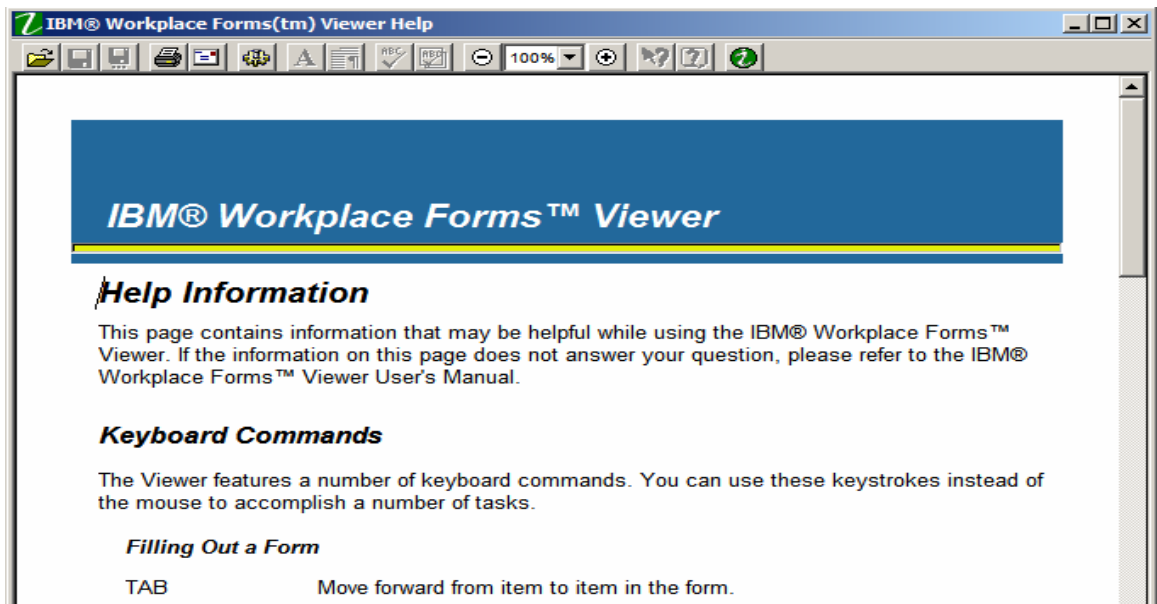
7. A status bar will appear to alert you to installation progress.



8. When the installation is complete, the **InstallShield Wizard Complete** window appears.



9. To use the **Workplace Forms™ Viewer**, launch the application by selecting **Finish**. A **Help Information** window appears.



10. [Review the information for helpful tips about the use of the **Workplace Forms™ Viewer**.]

11. Close the **Help Information** window by clicking on the Close button in the upper right hand corner of the screen.

12. The EIE application will invoke the viewer as required.

NOTE: The following icon appears in the top toolbar of the form. [insert icon, I'll help you find it]. Selecting it enables completion instructions for the form's required fields. 'Deselecting' it turns off the help feature.