



# Traffic Safety Facts 1998



## Pedalcyclists



The first automobile crash in the United States occurred in New York City in 1896, when a motor vehicle collided with a pedalcycle rider (*Famous First Facts*, by Joseph Kane).

More than 45,000 pedalcyclists have died in traffic crashes in the United States since 1932 — the first year in which estimates of pedalcyclist fatalities were recorded. The 350 pedalcyclists killed in 1932 accounted for 1.3 percent of the 27,979 persons who died in traffic crashes that year.

In 1998, 761 pedalcyclists were killed and an additional 53,000 were injured in traffic crashes. Pedalcyclist deaths accounted for 2 percent of all traffic fatalities, and pedalcyclists made up 2 percent of all the people injured in traffic crashes during the year.

The number of pedalcyclist fatalities in 1998 was 16 percent lower than the 911 fatalities reported in 1988. The highest number of pedalcyclist fatalities ever recorded in the Fatality Analysis Reporting System (FARS) was 1,003 in 1975.

In 1988, the average age of pedalcyclists killed in traffic crashes was 24.1 years; in 1998 the average age of those killed was 32.1 years, and the average age of those injured was 23.3 years.

Pedalcyclists accounted for 12 percent of all nonmotorist traffic fatalities in 1998. Pedestrians accounted for 85 percent, and the remaining 2 percent were skateboard riders, roller skaters, etc.

**“The 761 pedalcyclist deaths in 1998 accounted for 2 percent of all traffic fatalities during the year.”**

**Figure 1. Trends in Pedalcyclist and Total Traffic Fatalities, 1988-1998**

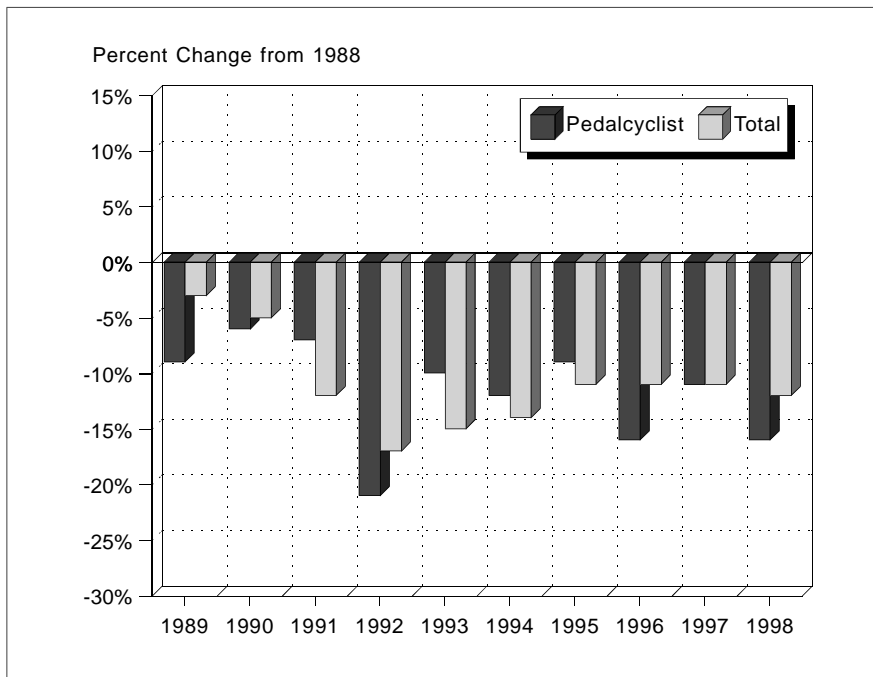


Table 1. Nonoccupant Traffic Fatalities, 1988-1998

Year	Pedestrian	Pedalcyclist	Other	Total
1988	6,870	911	136	7,917
1989	6,556	832	107	7,495
1990	6,482	859	124	7,465
1991	5,801	843	124	6,768
1992	5,549	723	98	6,370
1993	5,649	816	111	6,576
1994	5,489	802	107	6,398
1995	5,584	833	109	6,526
1996	5,449	765	154	6,368
1997	5,321	814	153	6,288
1998	5,220	761	131	6,112

Pedalcyclist fatalities occurred more frequently in urban areas (63 percent), at nonintersection locations (72 percent), between the hours of 5:00 PM and 9:00 PM (32 percent), and during the months of July, August, and September (35 percent).

Most of the pedalcyclists killed or injured in 1998 were males (87 percent and 82 percent, respectively), and most were between the ages of 5 and 44 years (89 percent and 73 percent, respectively).

The pedalcyclist fatality rate per capita was 7 times as high for males as for females, and the injury rate per capita was almost 5 times as high for males as for females.

Pedalcyclists under age 16 accounted for 30 percent of all pedalcyclists killed and 44 percent of those injured in traffic crashes in 1998. In comparison, pedalcyclists under age 16 accounted for 44 percent of all those killed in 1988.

Pedalcyclists 25 years of age and older have made up an increasing proportion of all pedalcyclist deaths since 1988. The proportion of pedalcyclist fatalities age 25 to 64 was 1.7 times as high in 1998 as in 1988 (50 percent and 30 percent, respectively).

Almost one-third (30 percent) of the pedalcyclists killed in traffic crashes in 1998 were between 5 and 15 years old. The pedalcyclist fatality rate for this age group was 5.2 per million population — nearly double the rate for all pedalcyclists (2.8 per million population). The injury rate for this age group was 545 per million population, compared with 197 per million population for pedalcyclists of all ages.

Alcohol involvement — either for the driver or the pedalcyclist — was reported in one-third of the traffic crashes that resulted in pedalcyclist fatalities in 1998. In 27 percent of the crashes, either the driver or the cyclist was intoxicated, with blood alcohol concentrations (BAC) of 0.10 grams per deciliter (g/dl) or greater. Lower alcohol levels (BAC 0.01 to 0.09 g/dl) were reported in an additional 8 percent. Nearly one-fourth (23 percent) of the pedalcyclists killed had a BAC of 0.01 g/dl or greater, and nearly one-fifth (18 percent) were intoxicated.

---

***“Nearly one-third of the pedalcyclists killed in traffic crashes in 1998 were between 5 and 15 years old.”***

---



---

***“Alcohol involvement was reported in one-third of the pedalcyclist fatalities in 1998.”***

---

Table 2. Pedalcyclist Fatalities and Injuries and Fatality and Injury Rates by Age and Sex, 1998

Age (years)	Male			Female			Total		
	Fatalities	Population (thousands)	Fatality Rate*	Fatalities	Population (thousands)	Fatality Rate*	Fatalities	Population (thousands)	Fatality Rate*
0-4	5	9,696	0.52	1	9,270	0.11	6	18,966	0.32
5-9	59	10,195	5.79	17	9,726	1.75	76	19,921	3.82
10-15	130	11,854	10.97	18	11,281	1.60	148	23,135	6.40
16-20	46	9,983	4.61	7	9,445	0.74	53	19,429	2.73
21-24	29	7,059	4.11	8	6,833	1.17	37	13,892	2.66
25-34	96	19,254	4.99	9	19,521	0.46	105	38,774	2.71
35-44	125	22,101	5.66	9	22,419	0.40	134	44,520	3.01
45-54	68	16,900	4.02	15	17,685	0.85	83	34,585	2.40
55-64	51	10,806	4.72	7	11,870	0.59	58	22,676	2.56
65-69	14	4,393	3.19	4	5,201	0.77	18	9,593	1.88
70-79	25	6,854	3.65	3	9,166	0.33	28	16,020	1.75
80+	12	2,952	4.07	1	5,836	0.17	13	8,788	1.48
Unknown	2	--	--	--	--	--	2	--	--
<b>Total</b>	<b>662</b>	<b>132,046</b>	<b>5.01</b>	<b>99</b>	<b>138,252</b>	<b>0.72</b>	<b>761</b>	<b>270,299</b>	<b>2.82</b>

Age (years)	Male			Female			Total		
	Injuries	Population (thousands)	Injury Rate*	Injuries	Population (thousands)	Injury Rate*	Injuries	Population (thousands)	Injury Rate*
0-4	**	9,696	22	**	9,270	5	**	18,966	14
5-9	5,000	10,195	454	2,000	9,726	201	7,000	19,921	330
10-15	13,000	11,854	1,133	3,000	11,281	305	17,000	23,135	730
16-20	5,000	9,983	473	1,000	9,445	129	6,000	19,429	306
21-24	4,000	7,059	589	**	6,833	42	4,000	13,892	320
25-34	7,000	19,254	361	1,000	19,521	55	8,000	38,774	207
35-44	5,000	22,101	221	1,000	22,419	35	6,000	44,520	127
45-54	3,000	16,900	160	**	17,685	19	3,000	34,585	88
55-64	1,000	10,806	107	**	11,870	23	1,000	22,676	63
65-69	1,000	4,393	124	**	5,201	5	1,000	9,593	59
70-79	**	6,854	54	**	9,166	6	**	16,020	27
80+	**	2,952	41	**	5,836	0	**	8,788	14
<b>Total</b>	<b>44,000</b>	<b>132,046</b>	<b>332</b>	<b>9,000</b>	<b>138,252</b>	<b>69</b>	<b>53,000</b>	<b>270,299</b>	<b>197</b>

\* Rate per million population.

\*\* Less than 500 injuries.

Source: Population — Bureau of the Census projections.

**For more information:**

Information on pedalcyclist traffic fatalities is available from the National Center for Statistics and Analysis, NRD-31, 400 Seventh Street, S.W., Washington, D.C. 20590. NCSA information can also be obtained by telephone or by fax-on-demand at 1-800-934-8517. FAX messages should be sent to (202) 366-7078. General information on highway traffic safety can be accessed by Internet users at <http://www.nhtsa.dot.gov/people/nca>. To report a safety-related problem or to inquire about motor vehicle safety information, contact the Auto Safety Hotline at 1-800-424-9393.

Table 3. Pedalcyclist Traffic Fatalities and Fatality Rates by State, 1998

State	Total Traffic Fatalities	Resident Population (thousands)	Pedalcyclist Fatalities	Percent of Total	Pedalcyclist Fatalities per Million Population
Alabama	1,071	4,352	5	0.5	1.15
Alaska	71	614	3	4.2	4.89
Arizona	980	4,669	22	2.2	4.71
Arkansas	625	2,538	5	0.8	1.97
California	3,494	32,667	104	3.0	3.18
Colorado	628	3,971	4	0.6	1.01
Connecticut	329	3,274	4	1.2	1.22
Delaware	115	744	3	2.6	4.03
District of Columbia	54	523	0	0.0	0.00
Florida	2,824	14,916	98	3.5	6.57
Georgia	1,569	7,642	22	1.4	2.88
Hawaii	120	1,193	1	0.8	0.84
Idaho	265	1,229	2	0.8	1.63
Illinois	1,393	12,045	34	2.4	2.82
Indiana	978	5,899	14	1.4	2.37
Iowa	449	2,862	7	1.6	2.45
Kansas	493	2,629	8	1.6	3.04
Kentucky	858	3,936	10	1.2	2.54
Louisiana	922	4,369	20	2.2	4.58
Maine	192	1,244	4	2.1	3.22
Maryland	606	5,135	7	1.2	1.36
Massachusetts	406	6,147	8	2.0	1.30
Michigan	1,367	9,817	28	2.0	2.85
Minnesota	650	4,725	9	1.4	1.90
Mississippi	948	2,752	9	0.9	3.27
Missouri	1,169	5,439	9	0.8	1.65
Montana	237	880	1	0.4	1.14
Nebraska	315	1,663	7	2.2	4.21
Nevada	361	1,747	5	1.4	2.86
New Hampshire	128	1,185	2	1.6	1.69
New Jersey	743	8,115	18	2.4	2.22
New Mexico	424	1,737	3	0.7	1.73
New York	1,498	18,175	53	3.5	2.92
North Carolina	1,596	7,546	44	2.8	5.83
North Dakota	92	638	0	0.0	0.00
Ohio	1,422	11,209	17	1.2	1.52
Oklahoma	755	3,347	4	0.5	1.20
Oregon	538	3,282	8	1.5	2.44
Pennsylvania	1,481	12,001	22	1.5	1.83
Rhode Island	74	988	1	1.4	1.01
South Carolina	1,002	3,836	18	1.8	4.69
South Dakota	165	738	2	1.2	2.71
Tennessee	1,216	5,431	6	0.5	1.10
Texas	3,577	19,760	57	1.6	2.88
Utah	350	2,100	9	2.6	4.29
Vermont	104	591	1	1.0	1.69
Virginia	935	6,791	17	1.8	2.50
Washington	660	5,689	10	1.5	1.76
West Virginia	354	1,811	3	0.8	1.66
Wisconsin	714	5,224	11	1.5	2.11
Wyoming	154	481	2	1.3	4.16
<b>U.S. Total</b>	<b>41,471</b>	<b>270,299</b>	<b>761</b>	<b>1.8</b>	<b>2.82</b>
Puerto Rico	558	3,827	24	4.3	6.27

Note: Totals may not equal sum of components due to independent rounding.

Sources: Fatalities — Fatality Analysis Reporting System, NHTSA. Population — Bureau of the Census.