

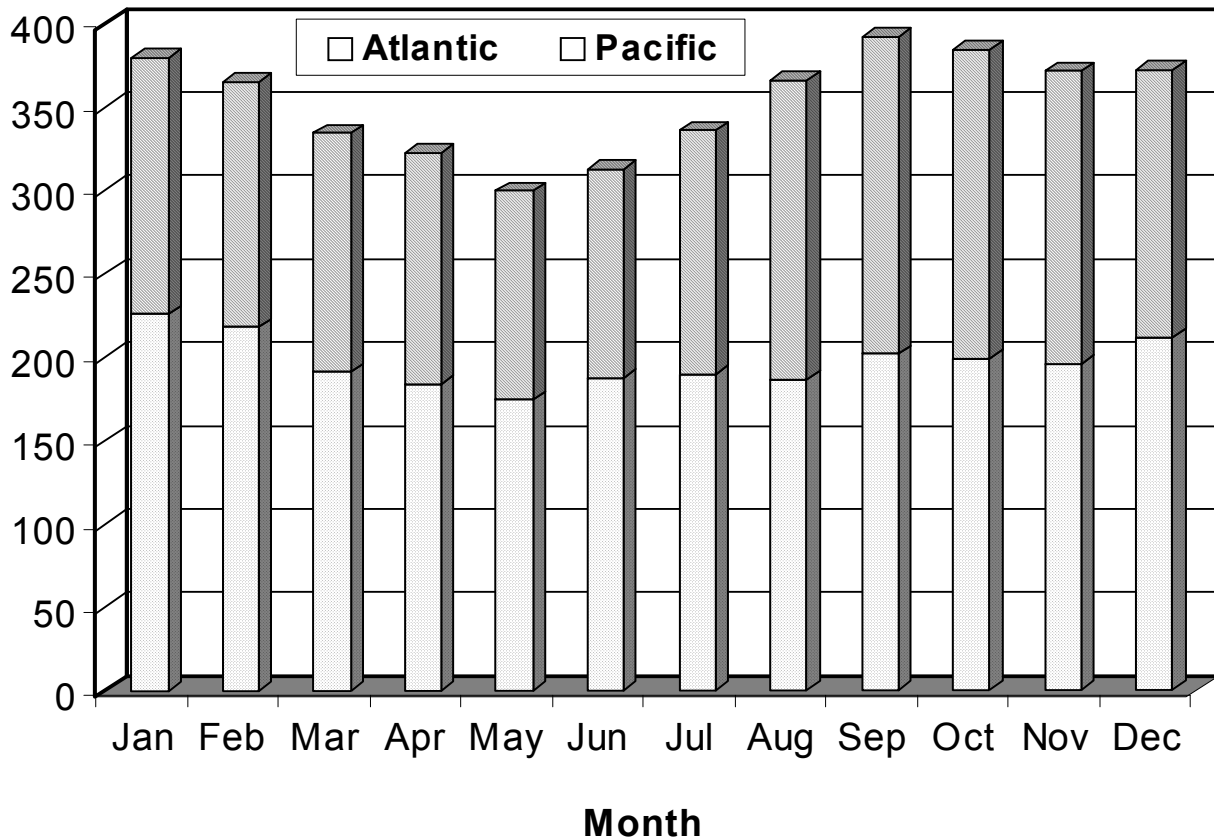


CURRENT FISHERIES STATISTICS NO. 2002-1

# FROZEN FISHERY PRODUCTS, ANNUAL SUMMARY, 2002

## 2002 U.S. COLD STORAGE HOLDINGS OF FISHERY PRODUCTS

Millions of Pounds



## SUMMARY OF HOLDINGS, BY MONTHS, 2002

SPECIES	JANUARY	FEBRUARY	MARCH	APRIL	MAY	JUNE
<b>FISH</b> ----- THOUSAND POUNDS -----						
<b>SALTWATER:</b>						
<b>BLOCKS AND SLABS:</b>						
COD	2,134	1,858	1,241	1,601	1,422	1,994
FLOUNDER & SOLE	269	287	201	189	273	261
HADDOCK	344	394	428	372	3,175	360
OCEAN PERCH	623	437	306	270	302	299
POLLOCK:						
ALASKA (WALLEYE)	16,606	16,987	11,675	13,585	6,828	14,939
ATLANTIC OR OTHER	8,268	7,264	5,132	5,065	3,838	6,442
WHITING:						
SILVER (ATLANTIC) HAKE	389	334	358	269	1,034	229
PACIFIC HAKE	7,417	1,453	1,432	1,239	955	273
MINCED	9,321	8,663	10,560	10,987	12,455	12,152
UNCLASSIFIED (3)	6,107	5,651	3,000	2,576	2,243	2,604
<b>TOTAL, BLOCKS &amp; SLABS</b>	<b>51,478</b>	<b>43,329</b>	<b>34,333</b>	<b>36,152</b>	<b>32,525</b>	<b>39,554</b>
<b>FILLETS AND STEAKS:</b>						
COD	19,043	20,892	19,971	19,219	18,539	15,638
FLOUNDER & SOLE	5,612	5,722	4,478	4,907	5,887	5,573
HADDOCK	3,337	3,514	3,540	3,852	3,786	4,793
HALIBUT	1,909	1,713	553	536	611	826
OCEAN PERCH	2,137	1,937	1,960	1,867	1,658	1,650
POLLOCK:						
ALASKA (WALLEYE)	10,315	9,219	10,571	11,628	8,977	6,531
ATLANTIC OR OTHER	4,291	4,351	3,116	3,492	3,289	3,563
ROCKFISH	429	513	545	357	373	285
SALMON	6,715	5,980	5,153	5,426	4,899	4,922
WHITING:						
SILVER (ATLANTIC) HAKE	4,269	3,461	2,713	2,550	2,332	2,157
PACIFIC HAKE	2,394	6,732	5,595	3,701	2,973	6,583
UNCLASSIFIED	16,883	15,491	16,817	16,416	16,798	14,769
<b>TOTAL, FILLETS &amp; STEAKS</b>	<b>77,333</b>	<b>79,525</b>	<b>75,012</b>	<b>73,952</b>	<b>70,122</b>	<b>67,290</b>
<b>ROUND, DRESSED, ETC.:</b>						
HALIBUT (EXC. CALIFORNIA)	4,422	2,480	1,528	1,399	2,319	3,688
SABLEFISH	424	238	288	429	661	533
SALMON:						
CHINOOK OR KING	2,879	2,553	1,979	1,773	1,758	1,634
COHO OR SILVER	7,305	6,544	5,580	4,759	3,788	1,953
CHUM OR FALL	24,381	21,281	18,644	15,969	13,247	13,628
PINK	2,765	2,122	1,605	977	807	591
SOCKEYE	2,355	1,905	1,632	1,308	1,218	1,064
UNCLASSIFIED	2,707	2,216	2,258	1,489	1,430	1,633
<b>TOTAL, SALMON</b>	<b>42,392</b>	<b>36,621</b>	<b>31,697</b>	<b>26,275</b>	<b>22,247</b>	<b>20,502</b>
WHITING:						
SILVER (ATLANTIC) HAKE	1	8	13	5	5	10
PACIFIC HAKE	277	67	10	9	19	69
UNCLASSIFIED (EXC. BAIT)	12,592	13,113	16,619	13,514	11,246	12,176
<b>TOTAL, ROUND, DRESSED, ETC.</b>	<b>60,108</b>	<b>52,526</b>	<b>50,155</b>	<b>41,631</b>	<b>36,498</b>	<b>36,978</b>

SEE FOOTNOTES AT END OF TABLE.

(Continued)

## SUMMARY OF HOLDINGS, BY MONTHS, 2002

Species	July	August	September	October	November	December
<b>FISH</b> ----- THOUSAND POUNDS -----						
<b>SALTWATER:</b>						
<b>BLOCKS AND SLABS:</b>						
COD	2,719	2,187	1,287	1,181	1,358	1,912
FLOUNDER & SOLE	314	276	167	194	210	224
HADDOCK	370	238	310	528	422	720
OCEAN PERCH	3,407	807	809	292	268	544
POLLOCK:						
ALASKA (WALLEYE)	13,285	15,633	17,465	15,715	19,599	20,914
ATLANTIC OR OTHER	5,893	4,392	4,097	4,153	4,450	3,954
WHITING:						
SILVER (ATLANTIC) HAKE	189	475	278	227	137	168
PACIFIC HAKE	683	221	221	212	236	237
MINCED	8,698	14,768	15,708	14,758	8,629	9,236
UNCLASSIFIED (3)	2,424	1,767	1,739	2,172	3,663	5,563
<b>TOTAL, BLOCKS &amp; SLABS</b>	<b>37,982</b>	<b>40,763</b>	<b>42,079</b>	<b>39,433</b>	<b>38,972</b>	<b>43,475</b>
<b>FILLETS AND STEAKS:</b>						
COD	15,152	12,661	12,815	12,654	14,441	15,123
FLOUNDER & SOLE	5,892	5,748	5,208	5,881	5,079	5,167
HADDOCK	3,463	3,144	3,041	3,537	4,507	5,085
HALIBUT	778	694	743	1,146	984	800
OCEAN PERCH	1,873	1,912	1,824	1,734	1,870	2,024
POLLOCK:						
ALASKA (WALLEYE)	7,385	12,868	14,155	14,204	13,664	12,857
ATLANTIC OR OTHER	4,389	3,668	3,446	4,107	4,106	2,806
ROCKFISH	470	703	529	595	435	311
SALMON	5,365	6,151	6,580	6,151	5,813	5,033
WHITING:						
SILVER (ATLANTIC) HAKE	3,671	3,571	3,455	3,027	3,157	3,653
PACIFIC HAKE	10,532	10,682	8,828	5,404	4,808	3,762
UNCLASSIFIED	15,177	14,722	14,566	13,434	13,095	18,768
<b>TOTAL, FILLETS &amp; STEAKS</b>	<b>74,147</b>	<b>76,524</b>	<b>75,191</b>	<b>71,874</b>	<b>71,959</b>	<b>75,389</b>
<b>ROUND, DRESSED, ETC.:</b>						
HALIBUT (EXC.CALIFORNIA)	3,512	4,350	5,254	5,480	4,891	4,109
SABLEFISH	532	744	1,084	918	576	426
SALMON:						
CHINOOK OR KING	3,679	4,826	6,251	5,844	5,717	5,880
COHO OR SILVER	2,240	3,921	7,259	6,822	5,800	4,880
CHUM OR FALL	28,445	33,680	33,058	31,278	30,740	27,309
PINK	815	2,501	3,414	3,014	2,138	1,835
SOCKEYE	2,124	2,777	2,882	2,559	1,864	1,592
UNCLASSIFIED	1,635	2,428	2,455	2,736	2,320	2,306
<b>TOTAL, SALMON</b>	<b>38,937</b>	<b>50,133</b>	<b>55,319</b>	<b>52,254</b>	<b>48,579</b>	<b>43,802</b>
WHITING:						
SILVER (ATLANTIC) HAKE	1	1	1	4	0	0
PACIFIC HAKE	77	15	19	15	68	67
UNCLASSIFIED (EXC. BAIT)	17,435	14,557	14,928	14,329	13,064	12,723
<b>TOTAL, ROUND, DRESSED, ETC.</b>	<b>60,494</b>	<b>69,799</b>	<b>76,606</b>	<b>72,999</b>	<b>67,178</b>	<b>61,127</b>

SEE FOOTNOTES AT END OF TABLE.

(Continued)

## SUMMARY OF HOLDINGS, BY MONTHS, 2002

SPECIES	JANUARY	FEBRUARY	MARCH	APRIL	MAY	JUNE
<b>FISH</b>	----- THOUSAND POUNDS -----					
<b>FISH STICKS AND PORTIONS</b>	<b>29,795</b>	<b>28,918</b>	<b>25,609</b>	<b>27,195</b>	<b>21,103</b>	<b>23,295</b>
ANALOG PRODUCTS	4,884	5,264	4,919	6,067	5,660	6,411
SURIMI: POLLOCK	12,734	11,329	11,029	10,566	8,989	11,425
OTHER	1,915	3,187	3,908	3,726	2,065	1,649
<b>TOTAL, SALTWATER</b>	<b>238,247</b>	<b>224,077</b>	<b>204,966</b>	<b>199,289</b>	<b>176,961</b>	<b>186,602</b>
<b>FRESHWATER:</b>						
FILLETS AND STEAKS	299	282	355	245	278	297
CATFISH	14,119	11,315	11,743	11,552	10,474	10,370
RAINBOW TROUT	1,757	1,804	1,870	2,054	2,210	2,283
UNCLASSIFIED (EXC. BAIT)	250	308	306	314	334	279
<b>TOTAL, FRESHWATER</b>	<b>16,425</b>	<b>13,708</b>	<b>14,273</b>	<b>14,165</b>	<b>13,295</b>	<b>13,228</b>
<b>BAIT &amp; ANIMAL FOOD</b>	<b>8,053</b>	<b>14,144</b>	<b>12,455</b>	<b>14,069</b>	<b>15,051</b>	<b>13,940</b>
<b>SHELLFISH</b>						
CLAMS & CLAM MEATS	1,061	1,316	1,407	1,785	1,857	2,407
CRABS:						
DUNGENESS	1,786	1,547	1,093	963	895	903
KING: MEAT	223	211	304	257	241	245
SECTIONS	10,082	9,195	8,358	7,836	6,007	4,663
SNOW: MEAT	998	865	858	716	1,145	1,071
SECTIONS	10,904	10,823	12,040	10,915	12,812	12,348
UNCLASSIFIED	3,775	3,518	2,153	1,903	2,837	3,694
<b>TOTAL, CRABS</b>	<b>27,769</b>	<b>26,159</b>	<b>24,807</b>	<b>22,590</b>	<b>23,936</b>	<b>22,924</b>
LOBSTERS:						
SPINY (TAILS)	1,455	1,445	1,280	1,230	1,241	1,156
UNCLASS.(WHOLE & MEAT)	6,410	5,117	4,178	3,154	2,588	3,067
OYSTER MEATS	357	2,791	659	594	463	584
SCALLOP MEATS	2,437	2,825	4,816	5,739	5,798	5,685
SHRIMP:						
RAW, HEADLESS	9,392	9,572	8,158	6,879	6,375	6,300
BREADED	5,049	4,549	2,509	2,495	2,544	2,656
PEELED	30,197	29,314	26,103	22,974	21,745	24,065
UNCLASSIFIED	13,164	12,056	11,159	10,842	10,311	11,480
<b>TOTAL, SHRIMP</b>	<b>57,802</b>	<b>55,491</b>	<b>47,929</b>	<b>43,191</b>	<b>40,975</b>	<b>44,501</b>
SQUID	7,281	8,304	6,752	5,465	4,886	4,324
UNCLASSIFIED SHELLFISH	9,499	7,968	7,332	9,154	9,957	10,895
<b>TOTAL, SHELLFISH</b>	<b>114,072</b>	<b>111,418</b>	<b>99,161</b>	<b>92,903</b>	<b>91,701</b>	<b>95,542</b>
<b>TOTAL, FISH &amp; SHELLFISH</b>	<b>376,796</b>	<b>363,347</b>	<b>330,855</b>	<b>320,425</b>	<b>297,008</b>	<b>309,313</b>
<b>CURED FISH (ALL CATEGORIES)</b>	<b>2,668</b>	<b>2,466</b>	<b>2,537</b>	<b>2,276</b>	<b>2,272</b>	<b>2,172</b>
<b>GRAND TOTAL</b>	<b>379,464</b>	<b>365,813</b>	<b>333,392</b>	<b>322,701</b>	<b>299,281</b>	<b>311,485</b>

SEE FOOTNOTES AT END OF TABLE.

(Continued)

## SUMMARY OF HOLDINGS, BY MONTHS, 2002

SPECIES	JULY	AUGUST	SEPTEMBER	OCTOBER	NOVEMBER	DECEMBER
<b>FISH</b> ----- THOUSAND POUNDS -----						
<b>FISH STICKS AND PORTIONS</b>	<b>20,738</b>	<b>22,290</b>	<b>34,021</b>	<b>25,820</b>	<b>26,639</b>	<b>26,661</b>
ANALOG PRODUCTS	4,837	4,959	5,198	5,254	5,558	4,843
SURIMI: POLLOCK	11,525	20,828	19,760	21,801	19,630	18,836
OTHER	2,891	2,410	3,079	2,660	2,402	1,728
<b>TOTAL, SALTWATER</b>	<b>212,614</b>	<b>237,574</b>	<b>255,935</b>	<b>239,841</b>	<b>232,339</b>	<b>232,058</b>
<b>FRESHWATER:</b>						
FILLETS AND STEAKS	338	297	289	329	279	255
CATFISH	10,096	10,072	10,495	10,315	10,660	10,865
RAINBOW TROUT	2,365	2,445	2,466	2,468	2,579	2,907
UNCLASSIFIED (EXC. BAIT)	394	1,038	414	366	447	333
<b>TOTAL, FRESHWATER</b>	<b>13,194</b>	<b>13,853</b>	<b>13,663</b>	<b>13,478</b>	<b>13,965</b>	<b>14,360</b>
<b>BAIT &amp; ANIMAL FOOD</b>	<b>13,513</b>	<b>13,756</b>	<b>13,295</b>	<b>12,259</b>	<b>11,818</b>	<b>10,706</b>
<b>SHELLFISH</b>						
CLAMS & CLAM MEATS	2,649	3,405	2,380	1,208	1,044	723
<b>CRABS:</b>						
DUNGENESS	1,107	1,019	690	958	735	1,169
KING: MEAT	269	234	252	262	253	265
SECTIONS	4,071	3,722	3,820	4,543	5,333	8,853
SNOW: MEAT	990	1,694	1,947	2,011	1,942	2,089
SECTIONS	5,419	5,302	6,903	9,427	7,005	5,951
UNCLASSIFIED	5,467	5,067	4,753	2,541	3,105	2,193
<b>TOTAL, CRABS</b>	<b>17,323</b>	<b>17,038</b>	<b>18,365</b>	<b>19,743</b>	<b>18,373</b>	<b>20,520</b>
<b>LOBSTERS:</b>						
SPINY (TAILS)	999	759	2,991	1,430	1,552	1,744
UNCLASS.(WHOLE & MEAT)	3,313	4,217	5,081	6,375	5,989	6,468
OYSTER MEATS	664	659	517	501	679	590
SCALLOP MEATS	5,771	4,502	4,979	5,557	5,236	5,746
<b>SHRIMP:</b>						
RAW, HEADLESS	6,596	6,961	7,594	8,244	8,410	8,425
BREADED	2,292	2,286	2,732	2,524	2,487	2,533
PEELED	28,310	30,312	32,204	33,276	34,359	32,398
UNCLASSIFIED	10,059	12,645	12,580	14,612	14,001	14,438
<b>TOTAL, SHRIMP</b>	<b>47,257</b>	<b>52,204</b>	<b>55,110</b>	<b>58,656</b>	<b>59,258</b>	<b>57,794</b>
SQUID	5,209	3,983	4,453	3,943	4,619	3,513
UNCLASSIFIED SHELLFISH	10,531	10,360	11,096	18,377	14,645	14,836
<b>TOTAL, SHELLFISH</b>	<b>93,716</b>	<b>97,127</b>	<b>104,971</b>	<b>115,789</b>	<b>111,395</b>	<b>111,935</b>
<b>TOTAL, FISH &amp; SHELLFISH</b>	<b>333,037</b>	<b>362,310</b>	<b>387,864</b>	<b>381,367</b>	<b>369,518</b>	<b>369,058</b>
<b>CURED FISH (ALL CATEGORIES)</b>	<b>1,921</b>	<b>3,268</b>	<b>3,244</b>	<b>2,354</b>	<b>1,199</b>	<b>1,772</b>
<b>GRAND TOTAL</b>	<b>334,959</b>	<b>365,578</b>	<b>391,108</b>	<b>383,722</b>	<b>370,717</b>	<b>370,830</b>

(1) Unclassified may also include blocks and slabs made from species listed separately. (2) Fish sticks and portions include all species that are either cooked or uncooked. Note:--Data includes imported fishery products. Data for these tables were collected from public and private refrigerated warehouses where fishery products are normally stored for 30 days or more.

**SUMMARY OF HOLDINGS AND CURED PRODUCTS,  
BY SECTIONS AND BY MONTHS, 2002**

<b>MONTH</b>	<b>ATLANTIC STATES</b>	<b>PACIFIC STATES</b>	<b>TOTAL HOLDINGS</b>	<b>CURED FISH</b>
JANUARY 31	218,710	170,386	389,096	848
FEBRUARY 28	209,550	161,963	371,514	733
MARCH 31	184,741	184,756	369,498	1,877
APRIL 30	168,413	198,068	366,480	1,282
MAY 31	184,693	183,112	367,804	1,028
JUNE 30	170,968	171,763	342,731	462
JULY 31	166,887	194,223	361,110	1,092
AUGUST 31	167,528	217,026	384,554	943
SEPTEMBER 30	186,080	219,907	405,987	2,138
OCTOBER 31	193,309	222,727	416,036	2,050
NOVEMBER 30	185,920	201,689	387,608	1,650
DECEMBER 31	203,022	188,038	391,061	1,370

(1) NOTE:--Data includes imported fishery products. States reporting in each section were as follows: Atlantic States: Maine, New Hampshire, Massachusetts, Rhode Island, Connecticut, New York, New Jersey, Delaware, Pennsylvania, Maryland, Virginia, District of Columbia, North Carolina, South Carolina, Georgia, Florida, Ohio, Indiana, Illinois, Michigan, Wisconsin, Minnesota, Iowa, Missouri, North Dakota, Nebraska, Arkansas, Tennessee, Alabama, Mississippi, Louisiana, and Texas; and the Pacific States: Colorado, Idaho, Utah, Arizona, Nevada, New Mexico, Alaska, Washington, Oregon, California, and Hawaii.

## **REFRIGERATED STORAGE FACILITIES**

Data are voluntarily submitted from warehouses artificially cooled to a temperature of 50 degrees Fahrenheit or lower where whole food products are normally stored for 30 days or more. These includes all types of storage businesses having refrigerated storage space -- public, private, or semi-private. All fish items in these facilities are reported regardless of the number of days stored at the time of the report. Also included are specialized facilities meeting the 30 day requirement, such as fish houses, manufacturing and processing plants, frozen fish plants, and packing plants. Excluded are stocks in space maintained by wholesalers, jobbers, distributors, chain stores, locker plants turned over more than once a month.

The key criterion for inclusion in our survey is "normally stored for 30 days or more." This means they must store fish commodities for that length of time to participate in our program and are requested to report only quantities available on the last day of each month.