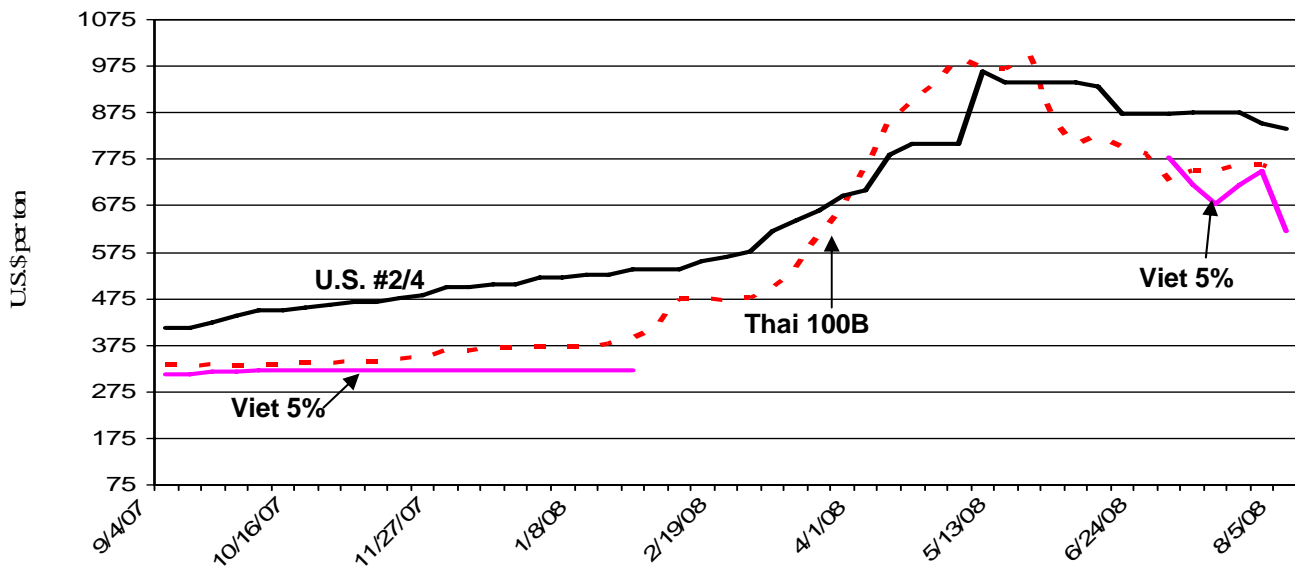


# Grain:

## World Markets and Trade

### Rice Prices Drop as Supply Perception Changes



A shift in global perception on the availability of exportable supplies has contributed to the drop in prices, as highlighted above by **Thailand** and the **United States**. While the global supply and demand picture has not changed significantly, the market climate has certainly changed. Export policies initially expected to severely limit sales from leading suppliers have, in fact, allowed trade to continue in the form of government sales.

Despite export restrictions, **Vietnam** made government sales to buyers in Cuba and Asia. Similarly, **India** continues government sales of non-basmati rice and allows private sales of basmati rice to traditional buyers. Although **Egypt** extended its ban until April 2009, it will likely fulfill longstanding trade commitments with neighboring partners. Internal pressure by traders may lead governments to further relax current export policies.

Earlier this year, some major rice importers, fearing inadequate supplies, tendered for large quantities despite record prices. However, continued government sales, most notably Vietnam's sale of 600,000 tons to the **Philippines**, and Thailand's record export pace have helped dispel the notion of short supplies. For example, Thailand has already sold 6.7 million tons through July, compared to 4.6 million tons for same period last year. The prospects for ample exportable supplies, the continued drop in oil prices, and the strengthening of the dollar are other factors that could further soften global prices.

---

## **TABLE OF CONTENTS**

<b>World Markets and Trade: Commentary and Current Data</b>	
Wheat .....	4
Rice .....	11
Coarse Grains.....	16
<b>Historical Data Series for Selected Regions and Countries .....</b>	<b>40</b>
<b>Endnotes to Grain: World Markets and Trade .....</b>	<b>59</b>

The Foreign Agricultural Service (FAS) updates its production, supply and distribution database for cotton, oilseeds, and grains at 9 a.m. on the day the World Agricultural Supply and Demand Estimates (WASDE) report is released. It is available on the FAS website (<http://www.fas.usda.gov/psdonline/>). This circular is released at 9:30 a.m. on the same day, together with its downloadable data set.

## All Grain Summary Comparison

	Marketing Year	Wheat			Rice, Milled			Corn		
		2006/07	2007/08	2008/09	2006/07	2007/08	2008/09	2006/07	2007/08	2008/09
<b>Production</b>										
United States	(Jun-May)	49.3	56.2	67.0	6.2	6.3	6.6	267.6	332.1	312.1
Other		547.0	554.3	603.7	413.9	422.7	424.2	444.6	457.1	477.5
<b>World Total</b>		596.3	610.5	670.8	420.2	429.0	430.8	712.2	789.2	789.6
<b>Domestic Consumption</b>										
United States	(Jun-May)	31.0	29.0	35.2	4.1	4.0	4.0	230.8	264.0	272.9
Other		587.7	590.0	611.9	412.9	418.0	421.5	494.6	509.3	524.3
<b>World Total</b>		618.7	619.0	647.1	417.0	422.0	425.5	725.3	773.4	797.2
<b>Ending Stocks</b>										
United States	(Jun-May)	12.4	8.3	15.6	1.3	0.9	0.7	33.1	40.0	28.8
Other		114.3	106.9	120.5	74.0	76.7	80.0	75.4	82.4	83.6
<b>World Total</b>		126.7	115.2	136.2	75.3	77.6	80.7	108.5	122.5	112.4
<b>TY Imports</b>										
United States	(Jun-May)	3.4	2.9	2.6	0.7	0.8	0.8	0.3	0.5	0.3
Other		109.3	107.8	115.8	27.2	24.6	24.7	90.4	95.6	86.1
<b>World Total</b>		112.7	110.7	118.4	27.9	25.4	25.5	90.7	96.1	86.4
<b>TY Exports</b>										
United States	(Jun-May)	25.0	34.5	27.0	3.0	3.5	3.3	54.2	61.0	50.0
Other		90.5	79.9	94.3	28.8	25.6	24.2	37.1	36.6	38.0
<b>World Total</b>		115.6	114.4	121.3	31.9	29.1	27.5	91.3	97.6	88.0

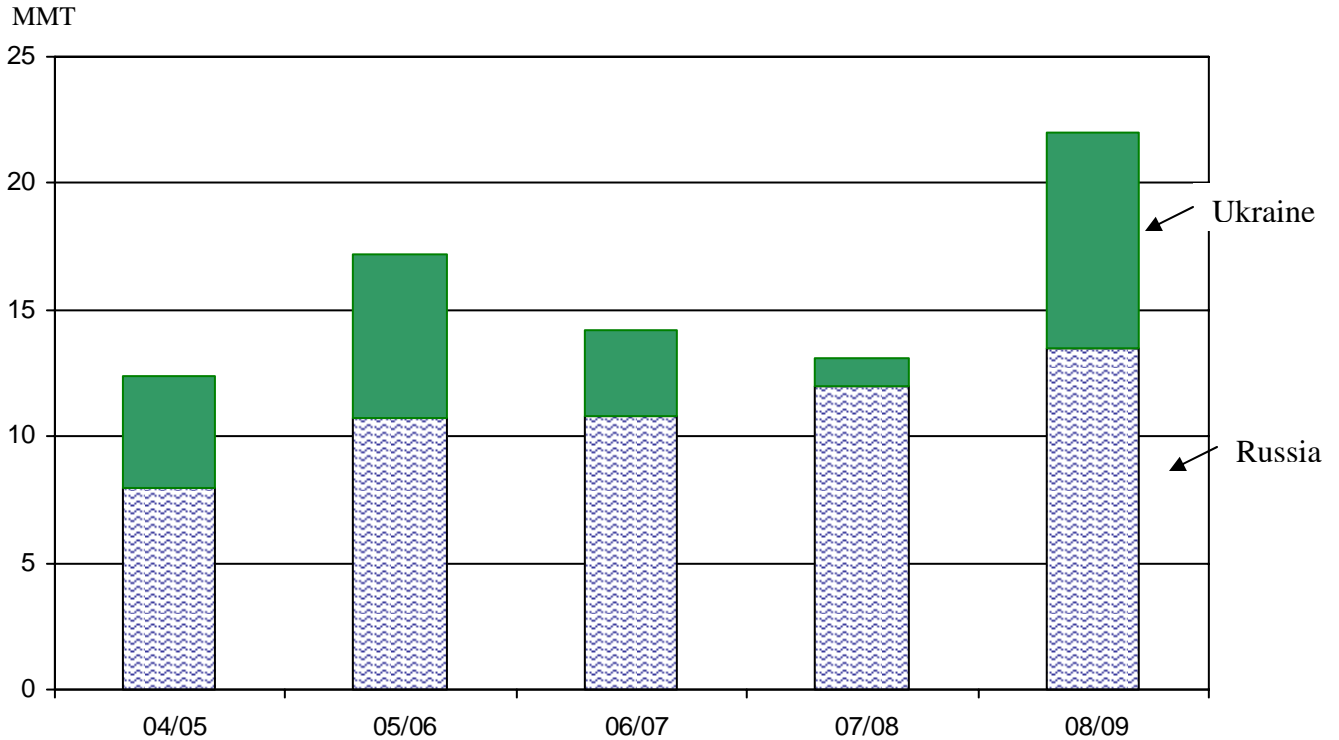
Note: Consumption in this table has not been adjusted for differences in marketing year imports and exports and therefore differs from global totals shown elsewhere.

Marketing years for U.S. grains are: Wheat (Jun-May), Rice (Aug-Jul), Corn (Sep-Aug).  
'Marketing Year' column is germane for U.S. wheat only.

---

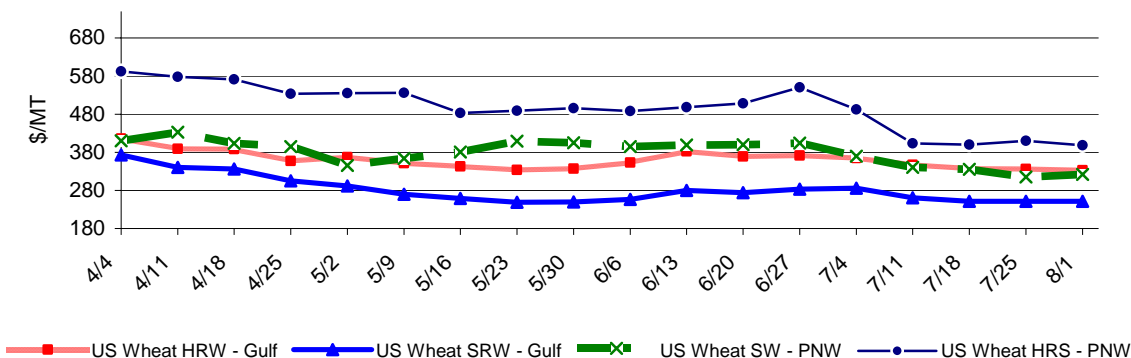
## WHEAT: WORLD MARKETS AND TRADE

### Russia and Ukraine Exports Forecast at Record



Ukraine and Russia are both forecast to have record exportable supplies displacing a portion of EU-27 shipments to key Mediterranean and Middle Eastern markets. Additionally, the growing abundance of feed-quality wheat is likely to displace corn in some feed rations in key importing countries, such as south Korea. The United States will not be as competitive in the North Africa and Middle East markets against larger supplies out of the Black Sea region.

### U.S. Weekly FOB Export Bids



### PRICES:

**Domestic:** For July, wheat prices retreated significantly with reports of larger exportable supplies in Ukraine, Russia, and the EU-27. Prices for Hard Red Spring (HRS) fell \$29 to \$336/ton, Soft Red Winter (SRW) prices dropped \$55 to \$315/ton, Hard Red Winter (HRW) fell \$35 to \$251/ton, and Soft White (SWW) plummeted \$82 to \$410/ton.

### TRADE CHANGES IN 2008/2009

#### Selected Exporters

- **Russia and Ukraine** are both raised 1.0 million tons to 13.5 and 8.5 million, respectively, based on larger crop prospects and strong regional demand in North Africa and the Middle East.
- **Argentina** is down 1.0 million tons to 8.5 million based on a reduced production forecast.
- **Canada** is up 500,000 tons to 17.0 million as the larger crop will increase exportable supplies.
- **Kazakhstan** is reduced 500,000 tons to 6.0 million due to a smaller crop.
- **The EU-27** is cut 500,000 tons to 15.5 million due to increased competition from Russia and Ukraine.

#### Selected Importers

- **Afghanistan** is up 1.0 million tons to 2.3 million on drought that has severely affected the region.

- 
- **Russia** is halved 500,000 tons to 500,000 based on larger domestic supplies.
  - **South Korea** is up 500,000 tons to 4.1 million based on stronger expected demand for wheat to replace corn in feed rations.

### **TRADE CHANGES IN 2007/2008**

#### **Selected Exporters**

- **Australia** is up 470,000 tons to 7.5 million based on final trade numbers.

#### **Selected Importers**

- **Algeria** is up 400,000 tons to 5.2 million on larger than expected late season shipments.

**World Wheat, Flour, and Products Trade**  
**July/June Year, Thousand Metric Tons**

	2004/05	2005/06	2006/07	2007/08	2008/09 Jul	2008/09 Aug
<b>TY Exports</b>						
Argentina	13,502	8,301	12,210	10,000	9,500	8,500
Australia	15,826	15,213	11,241	7,470	15,000	15,000
Brazil	14	771	40	750	800	1,000
Canada	15,117	15,616	19,481	16,800	16,500	17,000
China, Peoples Republic of	1,171	1,397	2,783	2,800	2,000	2,000
EU-27	14,745	15,694	13,873	11,000	16,000	15,500
Kazakhstan, Republic of	3,039	3,817	8,000	8,500	6,500	6,000
Russian Federation	7,951	10,664	10,790	12,000	12,500	13,500
Turkey	2,217	2,900	2,000	1,300	1,200	1,200
Ukraine	4,351	6,461	3,366	1,100	7,500	8,500
Others	6,813	5,599	6,725	8,135	5,740	6,065
<b>Subtotal</b>	<b>84,746</b>	<b>86,433</b>	<b>90,509</b>	<b>79,855</b>	<b>93,240</b>	<b>94,265</b>
<b>United States</b>	<b>28,464</b>	<b>27,424</b>	<b>25,041</b>	<b>34,500</b>	<b>27,000</b>	<b>27,000</b>
<b>World Total</b>	<b>113,210</b>	<b>113,857</b>	<b>115,550</b>	<b>114,355</b>	<b>120,240</b>	<b>121,265</b>
<b>TY Imports</b>						
Afghanistan	1,000	500	1,050	900	1,300	2,300
Algeria	5,398	5,469	4,879	5,200	5,600	5,600
Bangladesh	2,058	2,009	1,806	1,700	2,000	2,000
Brazil	5,309	6,194	7,750	7,000	7,300	7,000
Egypt	8,150	7,771	7,300	7,500	7,800	7,800
EU-27	7,061	6,758	5,137	6,500	5,000	5,000
Indonesia	4,661	4,981	5,572	5,300	5,600	5,600
Iran	200	1,105	700	200	4,500	4,500
Iraq	3,010	4,878	3,000	3,500	3,700	3,700
Israel	1,549	1,663	1,458	1,100	1,500	1,500
Japan	5,744	5,469	5,747	5,500	5,500	5,500
Korea, Republic of	3,591	3,884	3,439	3,000	3,600	4,100
Malaysia	1,412	1,216	1,202	1,200	1,500	1,500
Mexico	3,717	3,549	3,610	3,600	3,700	3,600
Morocco	2,272	2,418	1,801	4,700	4,000	4,000
Nigeria	3,014	3,656	3,316	2,750	3,300	3,300
Pakistan	1,416	966	55	1,700	2,000	2,000
Peru	1,449	1,656	1,332	1,400	1,500	1,500
Philippines	2,593	2,954	2,746	2,300	2,300	2,300
South Africa, Republic of	1,407	1,242	885	1,400	1,500	1,500
Tunisia	1,079	1,263	1,433	1,800	1,600	1,600
Turkey	372	64	1,833	1,500	1,500	1,500
Venezuela	1,504	1,691	1,765	1,600	1,750	1,750
Vietnam	1,226	1,181	1,293	1,200	1,500	1,500
Yemen	1,853	2,143	2,350	1,900	2,000	2,000
Others	37,527	33,706	37,877	33,380	33,785	33,185
<b>Subtotal</b>	<b>108,572</b>	<b>108,386</b>	<b>109,336</b>	<b>107,830</b>	<b>115,335</b>	<b>115,835</b>
<b>Unaccounted</b>	<b>2,692</b>	<b>3,162</b>	<b>2,820</b>	<b>3,625</b>	<b>2,305</b>	<b>2,830</b>
<b>United States</b>	<b>1,946</b>	<b>2,309</b>	<b>3,394</b>	<b>2,900</b>	<b>2,600</b>	<b>2,600</b>
<b>World Total</b>	<b>113,210</b>	<b>113,857</b>	<b>115,550</b>	<b>114,355</b>	<b>120,240</b>	<b>121,265</b>

TY=Trade Year, see Endnotes.

**World Wheat Production, Consumption, and Stocks**  
**Local Marketing Years, Thousand Metric Tons**

	2004/05	2005/06	2006/07	2007/08	2008/09 Jul	2008/09 Aug
<b>Production</b>						
Argentina	16,000	14,500	15,200	16,000	14,500	13,500
Australia	21,905	25,173	10,822	13,039	25,000	25,000
Brazil	5,845	4,873	2,234	3,825	4,500	5,000
Canada	24,796	25,748	25,265	20,050	24,500	25,000
China, Peoples Republic of	91,950	97,450	108,470	109,860	114,000	114,000
Egypt	7,177	8,184	8,274	8,275	8,300	8,300
EU-27	146,886	132,356	124,839	119,251	141,700	143,170
India	72,150	68,640	69,350	75,810	76,780	78,400
Iran	14,568	14,308	14,500	15,000	10,000	10,000
Kazakhstan, Republic of	9,950	11,000	13,500	16,600	14,000	13,500
Pakistan	19,500	21,612	21,277	23,300	21,500	21,500
Russian Federation	45,400	47,700	44,900	49,400	54,000	57,000
Turkey	18,500	18,500	17,500	15,500	16,500	16,500
Ukraine	17,500	18,700	14,000	13,900	21,000	22,000
Uzbekistan, Republic of	5,250	5,800	5,850	6,200	6,000	6,000
Others	49,623	49,027	50,976	48,280	44,990	44,865
<b>Subtotal</b>	567,000	563,571	546,957	554,290	597,270	603,735
<b>United States</b>	58,738	57,280	49,316	56,247	66,969	67,016
<b>World Total</b>	625,738	620,851	596,273	610,537	664,239	670,751
<b>Total Consumption</b>						
Algeria	7,300	7,500	7,650	8,050	8,050	8,150
Brazil	10,200	10,800	10,500	10,500	10,550	10,550
Canada	8,232	8,319	8,738	7,000	7,700	7,700
China, Peoples Republic of	102,000	101,500	102,000	104,000	107,000	107,000
Egypt	14,200	14,800	15,450	15,850	16,050	16,050
EU-27	123,220	127,525	125,500	118,465	129,000	131,000
India	72,838	69,971	73,358	75,850	78,100	77,600
Iran	14,550	14,800	15,300	15,500	15,600	15,600
Kazakhstan, Republic of	7,400	7,400	7,500	7,500	7,500	7,500
Morocco	6,600	6,800	7,150	7,300	7,400	7,400
Pakistan	19,600	20,900	21,900	22,400	22,900	22,600
Russian Federation	37,400	38,400	36,400	38,200	39,000	40,000
Turkey	16,800	16,100	16,650	16,800	16,600	16,900
Ukraine	11,700	12,500	11,700	12,900	13,200	13,200
Uzbekistan, Republic of	5,700	6,118	6,500	6,800	6,800	6,800
Others	116,380	123,407	121,368	122,887	123,312	123,812
<b>Subtotal</b>	575,114	593,003	585,858	593,065	611,061	614,586
<b>United States</b>	31,823	31,357	31,039	29,005	36,170	35,217
<b>World Total</b>	606,937	624,360	616,897	622,070	647,231	649,803
<b>Ending Stocks</b>						
Australia	6,782	9,618	4,405	3,874	8,219	7,749
Canada	7,922	9,638	6,849	3,749	4,349	4,349
China, Peoples Republic of	38,819	34,390	38,457	41,717	46,747	46,747
Egypt	2,861	4,006	4,120	4,035	4,075	4,075
EU-27	27,496	23,391	13,994	10,280	12,154	11,950
India	4,100	2,000	4,500	6,410	5,140	7,160
Russian Federation	3,891	3,809	2,380	2,580	6,080	6,580
Others	44,304	44,968	39,622	34,245	31,673	31,923
<b>Subtotal</b>	136,175	131,820	114,327	106,890	118,437	120,533
<b>United States</b>	14,699	15,545	12,414	8,318	14,623	15,623
<b>World Total</b>	150,874	147,365	126,741	115,208	133,060	136,156



**Regional Wheat Imports, Production, Consumption, and Stocks**

Thousand Metric Tons

	2004/05	2005/06	2006/07	2007/08	Jul 2008/09	Aug 2008/09
<b>TY Imports</b>						
North America	5,915	6,145	7,325	6,850	6,600	6,500
Central America	1,510	1,514	1,446	1,500	1,590	1,590
Caribbean	2,034	1,926	1,825	1,950	1,975	1,975
South America	10,826	12,687	13,925	13,065	13,815	13,515
European Union	7,061	6,758	5,137	6,500	5,000	5,000
Other Europe	1,464	1,457	1,468	1,625	1,675	1,625
Former Soviet Union - 12	4,795	5,147	5,934	5,630	6,030	5,580
Middle East	10,202	13,220	12,167	11,120	17,370	17,370
North Africa	18,407	18,560	16,297	21,000	20,300	20,300
Sub-Saharan Africa	12,092	13,003	11,431	10,690	12,155	12,155
East Asia	18,357	12,830	11,949	11,100	11,430	11,930
South Asia	5,681	4,774	10,668	7,330	6,530	7,430
Southeast Asia	11,429	11,923	12,347	11,625	12,700	12,700
Oceania	745	751	811	745	765	765
<b>Total</b>	<b>110,518</b>	<b>110,695</b>	<b>112,730</b>	<b>110,730</b>	<b>117,935</b>	<b>118,435</b>
<b>Production</b>						
North America	85,954	86,048	77,821	79,897	95,019	95,916
Central America	1	1	1	1	1	1
Caribbean	0	0	0	0	0	0
South America	25,186	22,422	20,072	22,724	22,042	21,542
European Union	146,886	132,356	124,839	119,251	141,700	143,170
Other Europe	5,438	4,176	4,331	4,379	4,160	4,555
Former Soviet Union - 12	85,581	90,923	84,977	92,691	102,340	105,955
Middle East	42,771	42,975	41,802	39,793	32,405	32,405
North Africa	17,166	15,178	18,576	13,818	15,760	15,775
Sub-Saharan Africa	4,919	5,700	6,961	8,008	7,164	7,164
East Asia	93,219	98,657	109,673	111,187	115,226	115,226
South Asia	96,326	96,799	95,981	105,325	103,000	103,620
Southeast Asia	130	150	140	147	145	145
Oceania	22,161	25,466	11,099	13,316	25,277	25,277
<b>Total</b>	<b>625,738</b>	<b>620,851</b>	<b>596,273</b>	<b>610,537</b>	<b>664,239</b>	<b>670,751</b>
<b>Domestic Consumption</b>						
North America	46,055	45,776	45,977	42,355	50,320	49,367
Central America	1,410	1,462	1,372	1,401	1,390	1,390
Caribbean	2,034	1,926	1,819	1,950	1,975	1,975
South America	23,479	24,662	24,247	24,708	25,105	25,105
European Union	123,220	127,525	125,500	118,465	129,000	131,000
Other Europe	6,018	5,897	5,450	5,515	5,610	5,610
Former Soviet Union - 12	72,231	74,786	72,637	76,020	77,550	78,550
Middle East	49,683	50,361	51,327	50,769	51,165	51,465
North Africa	32,308	33,514	33,895	35,925	35,775	35,875
Sub-Saharan Africa	16,519	18,210	17,858	19,093	18,977	18,977
East Asia	114,117	114,094	113,995	115,644	118,880	119,380
South Asia	101,118	101,078	104,563	108,120	109,950	109,150
Southeast Asia	10,929	11,565	11,714	11,922	12,095	12,095
Oceania	6,822	7,341	8,349	7,120	7,140	7,140
<b>Total</b>	<b>605,943</b>	<b>618,197</b>	<b>618,703</b>	<b>619,007</b>	<b>644,932</b>	<b>647,079</b>
<b>Ending Stocks</b>						
North America	22,997	25,495	19,677	12,481	19,486	20,586
Central America	185	185	150	150	226	226
Caribbean	20	20	20	20	20	20
South America	3,914	4,310	3,077	2,663	2,785	2,735
European Union	27,496	23,391	13,994	10,280	12,154	11,950
Other Europe	1,773	1,336	1,121	875	790	860
Former Soviet Union - 12	12,565	12,722	8,646	9,202	13,087	13,752
Middle East	12,637	13,398	12,348	9,842	6,702	6,502
North Africa	10,520	10,511	11,233	9,851	9,661	9,826
Sub-Saharan Africa	1,243	1,399	1,589	869	886	886
East Asia	41,218	36,609	40,851	44,189	49,370	49,370
South Asia	7,200	5,995	6,973	9,083	7,713	9,733
Southeast Asia	2,152	2,201	2,455	1,645	1,770	1,770
Oceania	6,954	9,793	4,607	4,058	8,410	7,940
<b>Total</b>	<b>150,874</b>	<b>147,365</b>	<b>126,741</b>	<b>115,208</b>	<b>133,060</b>	<b>136,156</b>

<b>2004/05</b>	<b>2005/06</b>	<b>2006/07</b>	<b>2007/08</b>	<b>Jul 2008/09</b>	<b>Aug 2008/09</b>
----------------	----------------	----------------	----------------	------------------------	------------------------

NOTES: Regional definitions appear on last page of this circular. Imports are reported on a trade year basis. All other data are reported using local marketing years.

---

## RICE: WORLD MARKETS AND TRADE

### PRICES:

**International:** Thai quotes dropped \$13 from last month's \$746 per ton, FOB to \$733.

**Domestic:** U.S. #2/4 long grain milled rice quotes dropped by \$44 from \$875 to \$831 per ton, FOB. The spread between comparable qualities of Thai and U.S. rice widened from \$71 per ton this time last year to the current \$98 per ton.

California medium grain #1/4 prices are quoted at \$1,150 per ton, FOB for new crop.

### TRADE CHANGES FOR 2008

#### Selected Exporters

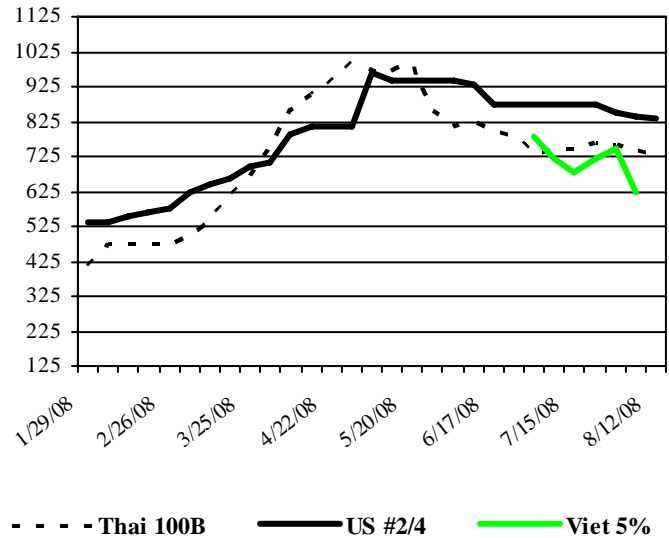
- **Argentina** is lowered 100,000 tons to 450,000 because of slower than expected shipments.
- **Brazil** is raised 175,000 tons to 450,000 as traders take advantage of high world prices and the temporary absence of major suppliers.
- **India** is boosted 300,000 tons to 2.8 million tons based on shipments to date and expected sales of basmati rice.
- **Pakistan** is raised 300,000 tons to 3.0 million as traders supply traditional Indian markets of non-basmati rice.

#### Selected Importer

- **Brazil** is lowered 200,000 tons to 500,000 due to a large government stock release onto the domestic market.

\$/MT

### Price Quotes Have Continued to Drop



**World Rice Trade**  
**January/December Year, Thousand Metric Tons**

	2004/05	2005/06	2006/07	2007/08	2008/09 Jul	2008/09 Aug
<b>TY Exports</b>						
Argentina	348	487	436	450	625	500
Brazil	272	291	201	450	300	300
Cambodia	200	350	450	400	300	300
China, Peoples Republic of	656	1,216	1,340	1,000	1,100	1,100
Ecuador	85	30	25	100	100	100
Egypt	1,095	958	1,209	450	800	800
EU-27	201	144	139	150	150	150
Guyana	182	250	210	210	220	220
India	4,687	4,537	6,301	2,800	2,000	2,000
Japan	200	200	200	200	200	200
Pakistan	3,032	3,579	2,696	3,000	3,150	3,150
Senegal	217	500	200	100	100	100
Thailand	7,274	7,376	9,500	10,000	9,000	9,000
Uruguay	762	812	734	775	800	800
Vietnam	5,174	4,705	4,522	4,750	5,200	5,200
Others	982	742	679	731	230	230
<b>Subtotal</b>	25,367	26,177	28,842	25,566	24,275	24,150
<b>United States</b>	3,862	3,306	3,029	3,500	3,300	3,300
<b>World Total</b>	29,229	29,483	31,871	29,066	27,575	27,450
<b>TY Imports</b>						
Bangladesh	785	531	1,570	950	700	700
Brazil	548	691	684	500	600	600
Cameroon	350	309	300	300	300	300
Canada	321	333	341	340	345	345
China, Peoples Republic of	609	654	472	300	330	330
Cote d'Ivoire	850	750	950	650	650	650
Cuba	736	594	574	500	600	600
EU-27	1,058	1,083	1,210	1,100	1,200	1,200
Ghana	450	441	340	350	350	350
Haiti	328	399	292	250	300	300
Hong Kong	347	309	348	315	315	315
Indonesia	500	539	2,000	1,100	800	800
Iran	983	1,251	900	900	900	900
Iraq	786	1,306	613	900	900	900
Japan	787	681	700	700	700	700
Korea, Democratic	191	41	336	350	400	400
Malaysia	751	886	800	880	880	880
Mexico	553	586	609	600	650	650
Nigeria	1,777	1,600	1,600	1,600	1,700	1,700
Philippines	1,890	1,791	1,900	2,100	2,000	2,200
Saudi Arabia	1,357	1,448	958	1,015	1,100	1,100
Senegal	518	1,113	800	700	700	700
Singapore	375	375	375	375	375	375
South Africa, Republic of	850	764	817	850	850	850
Vietnam	320	350	450	400	300	300
Others	7,706	7,374	7,296	6,605	6,545	6,545
<b>Subtotal</b>	25,726	26,199	27,235	24,630	24,490	24,690
<b>Unaccounted</b>	3,084	2,651	3,941	3,686	2,310	1,985
<b>United States</b>	419	633	695	750	775	775
<b>World Total</b>	29,229	29,483	31,871	29,066	27,575	27,450

TY=Trade Year, see Endnotes.

Note about dates: 2008/09 is calendar year 2009, 2007/08 is calendar year 2008, and so on.

**World Rice Production, Consumption, and Stocks**  
**Local Marketing Years, Thousand Metric Tons**

	2004/05	2005/06	2006/07	2007/08	2008/09 Jul	2008/09 Aug
<b>Milled Production</b>						
Bangladesh	25,600	28,758	29,000	28,600	29,400	29,400
Brazil	8,996	7,874	7,695	8,353	8,500	8,500
Burma, Union of	9,570	10,440	10,600	10,730	9,400	9,400
Cambodia	2,630	3,771	3,946	4,075	4,225	4,225
China, Peoples Republic of	125,363	126,414	127,200	129,840	130,550	130,550
Egypt	4,128	4,135	4,383	4,385	4,387	4,387
India	83,130	91,790	93,350	96,430	96,000	96,000
Indonesia	34,830	34,959	35,300	35,500	36,250	36,250
Japan	7,944	8,257	7,786	7,930	7,900	7,900
Korea, Republic of	5,000	4,768	4,680	4,408	4,500	4,500
Nigeria	2,300	2,700	2,900	3,000	3,100	3,100
Pakistan	5,025	5,547	5,200	5,500	5,600	5,600
Philippines	9,425	9,821	10,085	10,600	11,000	11,000
Thailand	17,360	18,200	18,250	18,500	18,800	18,800
Vietnam	22,716	22,772	22,922	23,922	23,700	23,700
Others	29,819	30,994	30,628	30,902	31,831	30,887
<b>Subtotal</b>	<b>393,836</b>	<b>411,200</b>	<b>413,925</b>	<b>422,675</b>	<b>425,143</b>	<b>424,199</b>
<b>United States</b>	<b>7,462</b>	<b>7,113</b>	<b>6,239</b>	<b>6,314</b>	<b>6,556</b>	<b>6,552</b>
<b>World Total</b>	<b>401,298</b>	<b>418,313</b>	<b>420,164</b>	<b>428,989</b>	<b>431,699</b>	<b>430,751</b>
<b>Total Consumption</b>						
Bangladesh	26,900	29,000	29,764	30,200	30,300	30,300
Brazil	9,074	8,452	7,960	8,429	8,710	8,710
Burma, Union of	10,300	10,400	10,670	10,331	9,700	9,700
Cambodia	2,780	3,571	3,646	3,725	3,975	3,975
China, Peoples Republic of	130,300	128,000	127,200	127,340	127,650	127,650
Egypt	3,250	3,343	3,268	3,660	3,625	3,625
India	80,861	85,088	86,940	90,760	93,000	93,000
Indonesia	35,850	35,739	35,900	36,350	36,851	36,851
Japan	8,300	8,250	8,250	8,150	8,130	8,130
Korea, Republic of	4,951	4,766	4,886	4,635	4,540	4,540
Nepal	3,029	2,859	2,863	2,870	2,910	2,910
Nigeria	4,250	4,350	4,450	4,700	4,800	4,800
Philippines	10,400	10,722	12,000	12,800	12,850	13,000
Thailand	9,480	9,544	9,870	9,467	9,450	9,450
Vietnam	17,595	18,392	18,775	19,000	19,100	19,100
Others	45,290	45,315	46,502	45,556	46,414	45,754
<b>Subtotal</b>	<b>405,357</b>	<b>411,952</b>	<b>416,512</b>	<b>422,658</b>	<b>424,221</b>	<b>423,641</b>
<b>United States</b>	<b>3,935</b>	<b>3,838</b>	<b>4,073</b>	<b>3,989</b>	<b>4,024</b>	<b>4,024</b>
<b>World Total</b>	<b>409,292</b>	<b>415,790</b>	<b>420,585</b>	<b>426,647</b>	<b>428,245</b>	<b>427,665</b>
<b>Ending Stocks</b>						
China, Peoples Republic of	38,931	36,783	35,915	37,715	39,845	39,845
India	8,500	10,520	11,430	13,000	14,000	14,000
Indonesia	3,448	3,207	4,607	4,857	5,056	5,056
Japan	1,919	2,395	2,406	2,686	2,956	2,956
Philippines	4,572	5,293	5,178	4,978	5,977	5,178
Thailand	2,312	3,594	2,479	1,519	1,877	1,877
Vietnam	1,292	1,317	1,392	1,964	1,664	1,664
Others	10,968	11,197	10,582	9,931	9,904	9,388
<b>Subtotal</b>	<b>71,942</b>	<b>74,306</b>	<b>73,989</b>	<b>76,650</b>	<b>81,279</b>	<b>79,964</b>
<b>United States</b>	<b>1,211</b>	<b>1,370</b>	<b>1,266</b>	<b>947</b>	<b>691</b>	<b>719</b>
<b>World Total</b>	<b>73,153</b>	<b>75,676</b>	<b>75,255</b>	<b>77,597</b>	<b>81,970</b>	<b>80,683</b>

Note: All data are reported on a milled basis.

**Regional Rice Imports, Production, Consumption, and Stocks**  
**Thousand Metric Tons**

	2004/05	2005/06	2006/07	2007/08	Jul 2008/09	Aug 2008/09
<b>TY Imports</b>						
North America	1,293	1,552	1,645	1,690	1,770	1,770
Central America	531	530	527	495	505	505
Caribbean	1,213	1,197	1,007	925	1,045	1,045
South America	964	1,097	1,091	929	1,052	1,052
European Union	1,058	1,083	1,210	1,100	1,200	1,200
Other Europe	114	117	106	102	100	100
Former Soviet Union - 12	526	504	403	389	401	401
Middle East	4,492	5,275	3,801	3,985	4,085	4,085
North Africa	261	265	372	245	245	245
Sub-Saharan Africa	7,984	7,981	7,709	6,815	6,915	6,915
East Asia	2,179	1,981	2,222	2,063	2,161	2,161
South Asia	1,038	834	1,791	1,260	980	980
Southeast Asia	4,236	4,147	5,727	4,982	4,456	4,656
Oceania	256	269	319	400	350	350
<b>Total</b>	<b>26,145</b>	<b>26,832</b>	<b>27,930</b>	<b>25,380</b>	<b>25,265</b>	<b>25,465</b>
<b>Production</b>						
North America	7,657	7,294	6,420	6,509	6,741	6,761
Central America	509	579	532	544	544	544
Caribbean	760	685	663	655	655	655
South America	15,777	14,440	14,053	15,142	15,511	15,511
European Union	1,880	1,731	1,688	1,680	1,624	1,618
Other Europe	10	10	10	10	10	10
Former Soviet Union - 12	770	871	1,000	1,005	1,032	1,022
Middle East	2,145	2,372	2,538	2,738	2,790	2,040
North Africa	4,169	4,176	4,424	4,426	4,428	4,428
Sub-Saharan Africa	7,744	8,636	9,066	9,271	9,453	9,438
East Asia	141,118	142,492	142,661	144,717	145,780	145,680
South Asia	119,009	131,367	132,861	135,875	136,405	136,318
Southeast Asia	99,465	102,944	104,085	106,398	106,546	106,546
Oceania	285	716	163	19	180	180
<b>Total</b>	<b>401,298</b>	<b>418,313</b>	<b>420,164</b>	<b>428,989</b>	<b>431,699</b>	<b>430,751</b>
<b>Domestic Consumption</b>						
North America	5,006	4,946	5,202	5,088	5,181	5,194
Central America	1,076	1,080	1,081	1,075	1,084	1,084
Caribbean	1,990	1,732	1,777	1,679	1,724	1,724
South America	14,588	13,819	13,408	14,010	14,429	14,429
European Union	2,631	2,651	2,755	2,750	2,752	2,747
Other Europe	109	117	121	117	110	110
Former Soviet Union - 12	1,355	1,360	1,413	1,369	1,398	1,388
Middle East	6,600	7,210	6,747	6,792	6,898	6,423
North Africa	3,552	3,621	3,581	3,926	3,891	3,891
Sub-Saharan Africa	15,760	16,179	16,694	16,206	16,338	16,342
East Asia	147,014	144,371	144,138	143,436	143,943	143,843
South Asia	115,934	121,509	124,526	129,052	131,436	131,349
Southeast Asia	90,390	92,484	95,055	95,987	96,395	96,545
Oceania	540	550	519	475	450	450
<b>Total</b>	<b>406,545</b>	<b>411,629</b>	<b>417,017</b>	<b>421,962</b>	<b>426,029</b>	<b>425,519</b>
<b>Ending Stocks</b>						
North America	1,385	1,529	1,412	1,117	891	863
Central America	297	271	299	254	234	234
Caribbean	159	225	178	89	55	55
South America	2,466	2,200	2,186	2,078	2,308	2,157
European Union	1,138	1,183	1,140	1,020	942	941
Other Europe	50	60	65	60	60	60
Former Soviet Union - 12	132	119	84	84	94	94
Middle East	1,497	1,848	1,859	1,747	1,604	1,329
North Africa	502	364	370	665	647	647
Sub-Saharan Africa	1,494	1,247	1,086	918	722	759
East Asia	41,916	40,329	39,305	41,402	44,075	44,075
South Asia	9,038	11,317	12,336	13,741	14,935	14,865
Southeast Asia	12,648	14,469	14,705	14,343	15,294	14,495
Oceania	431	515	230	79	109	109
<b>Total</b>	<b>73,153</b>	<b>75,676</b>	<b>75,255</b>	<b>77,597</b>	<b>81,970</b>	<b>80,683</b>

<b>2004/05</b>	<b>2005/06</b>	<b>2006/07</b>	<b>2007/08</b>	<b>Jul 2008/09</b>	<b>Aug 2008/09</b>
----------------	----------------	----------------	----------------	------------------------	------------------------

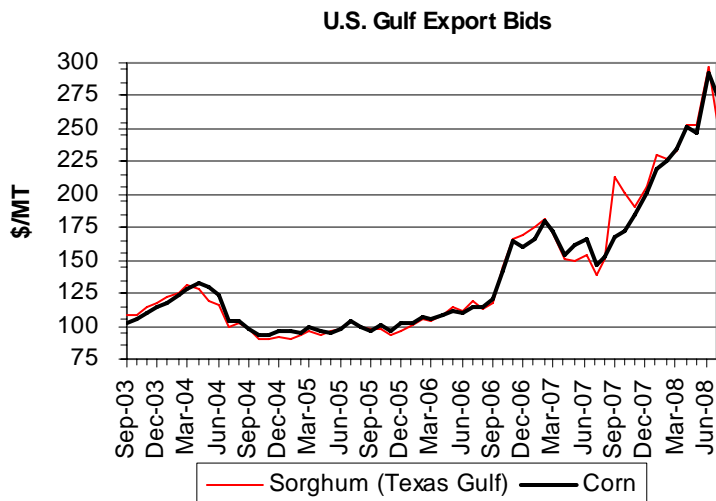
NOTES: Regional definitions appear on last page of this circular. Imports are reported on a trade year basis. All other data are reported using local marketing years.

---

## COARSE GRAINS: WORLD MARKETS AND TRADE

### PRICES:

**Domestic:** U.S. corn export prices averaged \$272 per ton in July, down \$21 from June and tumbled in the first two weeks of August to average \$199 per ton on expectations of a larger U.S. crop, availability of abundant feed quality wheat, lower crude and energy prices, and a firm dollar. Sorghum prices averaged \$249 per ton, in July, down \$48 from June, due to less demand from the EU-27 and lower corn prices.



### TRADE CHANGES IN 2008/09

#### Selected Exporters

- **Argentina corn** is cut 1.5 million tons to 15.0 million because of reduced production prospects.
- **Brazil corn** is slashed by 3.0 million tons to 9.0 million with diminished demand from the EU-27.
- **Canada barley** is up 450,000 tons to 1.6 million following improved production prospects.
- **EU barley** is cut 1.0 million tons to 3.5 million due to expected strong competition from Russia and Ukraine.
- **Russia and Ukraine barley** is increased 500,000 tons each due to higher production.
- **United States sorghum** is down 700,000 tons to 3.3 million, the lowest in nearly 40 years, based on expected lower demand from the EU-27 due to higher coarse grain production and its abundant supply of feed quality wheat.

#### Selected Importers

- **EU-27 corn** is slashed by 2.5 million tons to 4.0 million because of improved production prospects and abundant supplies of other grains.
- **South Korea corn** is cut by 500,000 tons to 8.2 million amidst further evidence of feed quality wheat substituting for corn.

---

Grain: World Markets and Trade, August 2008



- 
- **Taiwan corn** is reduced by 200,000 tons to 4.2 million (and a similar change is made for 2007/08) because of slow demand arising from relatively flat meat production in the face of high commodity and freight prices.
  - **EU-27 sorghum** is down 500,000 tons to 1.5 million on larger production prospects for corn and feed quality wheat.
  - **Mexico sorghum** is down 200,000 to 1.3 million on larger production and reports of white corn being used in feed rations.

### TRADE CHANGES IN 2007/08

#### Selected Exporters

- **United States corn** is cut 1.0 million tons to 61.0 million, the second highest ever, as late-season shipments and sales are slowing.
- **Argentina corn** is boosted 500,000 tons to 15.0 million because of a record pace for shipments (March-July).
- **Brazil corn** is lowered by 500,000 tons to 10.0 million, still a record, as shipments to key destinations such as Iran are greatly reduced this year.
- **India corn** is raised 200,000 tons to 2.8 million because of additional shipments allowed despite the export ban.
- **South Africa corn** is slashed 800,000 tons to 1.0 million. Shipments have been very slow despite higher production.
- **Ukraine corn** is raised 500,000 tons to 2.0 million with strong late-season shipments.
- **Australia barley** is raised 500,000 tons to 3.0 million based on greater-than-expected shipments to Saudi Arabia, China and Japan.
- **Canada barley** is boosted 200,000 tons to a 10-year high of 3.0 million based on shipments to Saudi Arabia, the United States, Japan and China.
- **EU-27 barley** is down 300,000 tons to 3.4 million based on strong competition from Ukraine.
- **Ukraine barley** is up 300,000 tons to 2.0 million based on strong demand in the Middle East.
- **Argentina sorghum** is down 200,000 to 1.0 million tons on lower expected demand from the EU-27 and the pace of shipments.

---

## Selected Importers

- **Algeria, Canada, Japan, Indonesia, and Venezuela corn** are all revised based on updated trade data.
- **Saudi Arabia barley** jumps 500,000 tons to 6.5 million tons based on shipments from Australia, the Black Sea and Canada.
- **EU-27 sorghum** is down 300,000 tons to 5.0 million tons based on import licenses and the slow pace of shipments from Brazil, Argentina, and the United States.
- **Mexico sorghum** is up 200,000 tons to 1.1 million tons, still the lowest in 20 years, on the pace of sales and shipments from the United States.

**World Coarse Grain Trade**  
**October/September Year, Thousand Metric Tons**

	2004/05	2005/06	2006/07	2007/08	2008/09 Jul	2008/09 Aug
<b>TY Exports</b>						
Argentina	14,371	11,243	17,191	16,805	18,955	17,455
Australia	4,996	5,614	2,019	3,385	4,430	4,430
Brazil	1,457	2,826	8,188	10,180	12,200	9,200
Canada	3,217	4,010	3,787	5,850	3,075	3,525
EU-27	5,954	3,649	5,495	4,125	6,200	5,200
India	505	501	590	3,025	1,525	1,525
Paraguay	386	1,314	2,048	2,000	1,500	1,500
Russian Federation	1,534	1,450	1,836	1,150	1,775	2,350
South Africa, Republic of	1,553	1,429	456	1,025	2,525	2,525
Ukraine	6,465	7,444	3,941	4,035	8,100	8,600
Others	10,115	7,457	9,632	4,785	4,645	4,845
<b>Subtotal</b>	50,553	46,937	55,183	56,365	64,930	61,155
<b>United States</b>	50,692	61,443	59,157	68,556	54,595	53,895
<b>World Total</b>	101,245	108,380	114,340	124,921	119,525	115,050
<b>TY Imports</b>						
Algeria	2,273	2,138	2,597	2,055	2,650	2,650
Brazil	745	1,096	1,500	1,260	755	755
Canada	2,339	2,029	2,285	3,070	2,925	2,925
Chile	1,189	1,663	1,915	2,150	2,200	2,200
China, Peoples Republic of	2,073	2,306	1,156	1,280	1,425	1,425
Colombia	2,516	3,380	3,669	3,775	3,850	3,850
Dominican Republic	1,031	1,068	1,212	1,000	1,100	1,100
Egypt	5,405	4,418	4,901	4,220	4,310	4,310
EU-27	2,906	2,883	8,738	18,390	8,655	5,655
Guatemala	641	751	764	800	800	800
Iran	3,849	2,887	3,600	3,200	3,700	3,700
Israel	1,700	1,588	1,684	2,115	1,800	1,800
Japan	19,709	19,765	19,668	19,260	19,160	19,160
Jordan	938	1,234	1,186	800	1,000	1,000
Korea, Republic of	8,715	8,550	8,803	9,170	8,770	8,270
Libya	693	713	586	650	800	800
Malaysia	2,406	2,517	2,363	2,500	2,600	2,600
Mexico	8,975	9,930	11,035	10,550	12,175	11,975
Morocco	1,989	1,971	2,088	2,405	2,805	2,805
Peru	1,366	1,548	1,650	1,500	1,600	1,600
Saudi Arabia	7,724	8,578	7,577	8,500	8,800	9,200
Syria	2,281	1,868	1,957	2,100	2,850	2,850
Taiwan	4,757	4,735	4,402	4,350	4,575	4,375
Tunisia	1,228	1,230	1,519	1,400	1,600	1,600
Vietnam	291	475	650	700	750	750
Others	10,388	12,919	13,113	12,296	11,545	11,545
<b>Subtotal</b>	98,127	102,240	110,618	119,496	113,200	109,700
<b>Unaccounted</b>	876	3,845	1,117	2,193	3,665	2,575
<b>United States</b>	2,242	2,295	2,605	3,232	2,660	2,775
<b>World Total</b>	101,245	108,380	114,340	124,921	119,525	115,050

TY=Trade Year, see Endnotes.

**World Coarse Grains Production, Consumption, and Stocks**  
**Local Marketing Years, Thousand Metric Tons**

	2004/05	2005/06	2006/07	2007/08	2008/09 Jul	2008/09 Aug
<b>Production</b>						
Argentina	24,902	19,223	27,538	26,503	30,423	28,923
Australia	11,409	13,527	6,583	9,897	12,457	12,457
Brazil	37,874	44,167	53,184	59,944	59,859	59,859
Canada	25,602	24,968	23,145	27,840	23,690	24,220
China, Peoples Republic of	138,252	147,696	159,100	159,015	160,500	160,500
Ethiopia	7,565	9,085	11,075	11,930	11,100	11,100
EU-27	166,579	146,268	137,433	136,348	151,359	154,076
India	33,560	34,040	33,810	40,830	37,400	37,900
Indonesia	7,200	6,500	6,700	7,500	7,750	7,750
Mexico	28,947	25,833	29,140	29,730	29,980	30,180
Nigeria	23,200	24,700	26,000	24,000	25,800	25,800
Russian Federation	29,600	27,600	30,200	29,325	32,600	33,750
South Africa, Republic of	12,209	7,311	7,760	12,513	11,983	11,983
Turkey	11,045	11,945	10,945	9,545	10,345	10,645
Ukraine	23,000	18,140	19,175	14,585	21,670	23,480
Others	116,227	119,995	126,940	125,404	127,596	127,711
<b>Subtotal</b>	697,171	680,998	708,728	724,909	754,512	760,334
<b>United States</b>	319,417	298,763	280,113	351,062	314,516	328,778
<b>World Total</b>	1,016,588	979,761	988,841	1,075,971	1,069,028	1,089,112
<b>Domestic Consumption</b>						
Argentina	9,058	9,373	10,023	10,328	11,023	10,823
Brazil	41,558	42,217	43,344	44,989	47,809	47,809
Canada	22,981	22,917	24,454	25,000	23,945	24,095
China, Peoples Republic of	141,172	147,455	153,700	157,100	165,525	165,525
Egypt	12,364	11,201	11,835	11,480	11,670	11,670
Ethiopia	7,565	8,885	10,850	11,930	11,125	11,125
EU-27	152,589	147,541	147,709	152,257	151,270	149,761
India	33,240	33,800	32,520	38,195	35,200	36,030
Japan	19,878	20,092	19,820	19,392	19,312	19,312
Mexico	38,276	37,587	39,945	40,330	41,655	41,555
Nigeria	22,950	24,450	25,750	24,000	25,650	25,650
Russian Federation	29,400	27,700	28,600	29,100	29,750	30,675
South Africa, Republic of	10,305	8,766	9,136	9,698	9,578	9,578
Turkey	11,504	11,452	11,650	11,380	11,150	11,050
Ukraine	15,200	11,990	13,375	12,490	13,720	14,330
Others	170,755	180,354	186,019	189,183	193,308	192,753
<b>Subtotal</b>	739,146	748,410	773,088	788,868	804,868	805,273
<b>United States</b>	240,216	245,075	242,913	277,343	281,235	287,841
<b>World Total</b>	979,362	993,485	1,016,001	1,066,211	1,086,103	1,093,114
<b>Ending Stocks</b>						
Brazil	4,380	3,167	3,701	10,461	9,966	13,966
Canada	6,319	6,281	3,486	3,521	3,116	3,046
China, Peoples Republic of	37,017	35,808	36,951	39,196	35,096	34,946
EU-27	25,121	22,269	15,289	13,535	18,238	18,305
Iran	2,828	3,117	3,117	3,117	2,417	2,417
Mexico	5,395	3,336	3,375	3,225	3,475	3,725
South Africa, Republic of	3,427	2,439	1,755	3,370	2,875	3,575
Others	35,627	34,006	34,182	27,556	32,737	30,844
<b>Subtotal</b>	120,114	110,423	101,856	103,981	107,920	110,824
<b>United States</b>	58,800	54,767	36,174	43,809	25,249	32,964
<b>World Total</b>	178,914	165,190	138,030	147,790	133,169	143,788

**Regional Coarse Grains Imports, Production, Consumption, and Stocks**  
**Thousand Metric Tons**

	2004/05	2005/06	2006/07	2007/08	Jul 2008/09	Aug 2008/09
<b>TY Imports</b>						
North America	13,556	14,254	15,925	16,852	17,760	17,675
Central America	2,405	2,803	2,906	2,860	3,000	3,000
Caribbean	1,913	1,969	2,223	2,060	2,210	2,210
South America	6,460	8,752	10,339	10,575	9,770	9,770
European Union	2,906	2,883	8,738	18,390	8,655	5,655
Other Europe	575	686	923	1,030	885	885
Former Soviet Union - 12	1,080	1,100	917	890	660	660
Middle East	17,944	17,586	18,476	19,060	20,365	20,765
North Africa	11,588	10,470	11,691	10,730	12,165	12,165
Sub-Saharan Africa	2,706	3,449	2,226	1,996	1,570	1,570
East Asia	35,666	35,610	34,140	34,385	34,255	33,555
South Asia	44	33	51	15	10	10
Southeast Asia	3,499	4,897	4,658	3,855	4,530	4,530
Oceania	27	43	10	30	25	25
<b>Total</b>	<b>100,369</b>	<b>104,535</b>	<b>113,223</b>	<b>122,728</b>	<b>115,860</b>	<b>112,475</b>
<b>Production</b>						
North America	373,966	349,564	332,398	408,632	368,186	383,178
Central America	2,925	2,923	3,178	3,457	3,457	3,457
Caribbean	869	784	771	785	785	785
South America	73,029	73,730	92,641	98,262	102,430	100,930
European Union	166,579	146,268	137,433	136,348	151,359	154,076
Other Europe	12,757	12,720	11,720	9,533	12,587	12,657
Former Soviet Union - 12	63,030	55,307	58,701	53,912	64,485	67,765
Middle East	18,866	19,988	19,109	17,741	16,297	16,597
North Africa	11,786	9,371	11,211	9,644	9,897	9,897
Sub-Saharan Africa	79,355	82,956	90,328	93,716	94,169	94,169
East Asia	140,518	149,899	161,401	161,228	162,739	162,739
South Asia	39,291	40,395	40,020	47,125	43,633	43,858
Southeast Asia	21,583	21,682	22,700	25,044	25,900	25,900
Oceania	12,034	14,174	7,230	10,544	13,104	13,104
<b>Total</b>	<b>1,016,588</b>	<b>979,761</b>	<b>988,841</b>	<b>1,075,971</b>	<b>1,069,028</b>	<b>1,089,112</b>
<b>Domestic Consumption</b>						
North America	301,473	305,579	307,312	342,673	346,835	353,491
Central America	5,480	5,550	6,025	6,256	6,525	6,525
Caribbean	2,725	2,784	2,886	2,943	3,080	3,080
South America	65,539	68,319	71,538	74,646	78,208	78,208
European Union	152,589	147,541	147,709	152,257	151,270	149,761
Other Europe	12,132	12,104	11,695	10,890	11,690	11,690
Former Soviet Union - 12	54,675	49,700	51,435	50,907	53,315	54,870
Middle East	34,909	36,515	37,940	38,074	37,813	37,913
North Africa	21,816	20,854	22,036	21,290	22,225	22,225
Sub-Saharan Africa	80,230	85,213	91,385	91,788	92,464	92,464
East Asia	177,178	183,164	189,194	192,213	200,645	199,945
South Asia	38,889	40,064	38,797	44,515	41,433	41,988
Southeast Asia	23,948	25,658	26,860	27,834	29,435	29,435
Oceania	7,428	7,810	6,831	7,909	7,987	7,987
<b>Total</b>	<b>979,011</b>	<b>990,855</b>	<b>1,011,643</b>	<b>1,064,195</b>	<b>1,082,925</b>	<b>1,089,582</b>
<b>Ending Stocks</b>						
North America	70,514	64,384	43,035	50,555	31,840	39,735
Central America	593	688	745	796	718	718
Caribbean	177	146	254	156	71	71
South America	9,898	7,879	8,876	14,314	14,891	18,191
European Union	25,121	22,269	15,289	13,535	18,238	18,305
Other Europe	1,600	1,483	1,491	989	1,685	1,736
Former Soviet Union - 12	7,268	5,546	5,284	3,859	5,404	5,379
Middle East	7,688	8,426	8,335	6,777	5,426	6,176
North Africa	3,617	2,657	3,201	2,235	2,157	2,072
Sub-Saharan Africa	5,267	4,897	5,559	6,823	6,098	6,798
East Asia	41,178	39,711	40,743	43,093	38,842	38,892
South Asia	1,547	1,386	1,440	1,640	3,579	1,995
Southeast Asia	2,059	2,532	2,177	2,237	2,177	2,177
Oceania	2,387	3,186	1,601	781	2,043	1,543
<b>Total</b>	<b>178,914</b>	<b>165,190</b>	<b>138,030</b>	<b>147,790</b>	<b>133,169</b>	<b>143,788</b>

<b>2004/05</b>	<b>2005/06</b>	<b>2006/07</b>	<b>2007/08</b>	<b>Jul 2008/09</b>	<b>Aug 2008/09</b>
----------------	----------------	----------------	----------------	------------------------	------------------------

NOTES: Regional definitions appear on last page of this circular. Imports are reported on a trade year basis. All other data are reported using local marketing years.

**World Corn Trade**  
**October/September Year, Thousand Metric Tons**

	2004/05	2005/06	2006/07	2007/08	2008/09 Jul	2008/09 Aug
<b>TY Exports</b>						
Argentina	13,752	10,707	15,693	15,000	16,500	15,000
Brazil	1,431	2,826	8,071	10,000	12,000	9,000
China, Peoples Republic of	7,589	3,727	5,269	600	500	500
EU-27	678	449	664	500	1,000	1,000
India	481	497	582	2,800	1,500	1,500
Paraguay	386	1,314	2,048	2,000	1,500	1,500
Serbia	nr	nr	854	150	1,000	1,000
South Africa, Republic of	1,517	1,406	431	1,000	2,500	2,500
Thailand	396	121	442	500	500	500
Ukraine	2,334	2,464	1,027	2,000	3,500	3,500
Others	2,053	2,985	1,971	2,080	1,765	2,015
<b>Subtotal</b>	30,617	26,496	37,052	36,630	42,265	38,015
<b>United States</b>	45,347	56,084	54,214	61,000	50,000	50,000
<b>World Total</b>	75,964	82,580	91,266	97,630	92,265	88,015
<b>TY Imports</b>						
Algeria	2,145	2,061	2,438	2,000	2,500	2,500
Canada	2,237	1,962	2,226	3,000	2,800	2,800
Chile	1,081	1,587	1,688	1,900	2,000	2,000
Colombia	2,256	3,151	3,341	3,500	3,600	3,600
Costa Rica	569	687	672	700	700	700
Cuba	546	501	646	650	700	700
Dominican Republic	1,031	1,068	1,212	1,000	1,100	1,100
Egypt	5,398	4,397	4,826	4,200	4,300	4,300
El Salvador	513	521	622	600	650	650
EU-27	2,469	2,634	7,056	13,000	6,500	4,000
Guatemala	641	751	764	800	800	800
Iran	2,558	2,300	3,300	2,700	2,500	2,500
Israel	1,242	1,128	1,311	1,700	1,300	1,300
Japan	16,485	16,617	16,713	16,600	16,100	16,100
Korea, Republic of	8,638	8,488	8,737	9,100	8,700	8,200
Libya	432	471	511	550	600	600
Malaysia	2,406	2,517	2,363	2,500	2,600	2,600
Mexico	5,945	6,787	8,944	9,200	10,500	10,500
Morocco	1,423	1,491	1,683	1,700	1,800	1,800
Peru	1,301	1,467	1,528	1,400	1,500	1,500
Saudi Arabia	1,224	1,472	1,577	2,000	2,200	2,200
Syria	1,781	1,256	1,729	1,800	2,000	2,000
Taiwan	4,562	4,533	4,283	4,200	4,400	4,200
Tunisia	714	624	653	900	900	900
Vietnam	291	475	650	700	750	750
Others	7,731	10,503	10,887	9,216	7,945	7,845
<b>Subtotal</b>	75,619	79,449	90,360	95,616	89,445	86,145
<b>Unaccounted</b>	64	2,921	587	1,539	2,520	1,570
<b>United States</b>	281	210	319	475	300	300
<b>World Total</b>	75,964	82,580	91,266	97,630	92,265	88,015

TY=Trade Year, see Endnotes.

**World Corn Production, Consumption, and Stocks**  
**Local Marketing Years, Thousand Metric Tons**

	2004/05	2005/06	2006/07	2007/08	2008/09 Jul	2008/09 Aug
<b>Production</b>						
Argentina	20,500	15,800	22,500	21,000	23,500	22,000
Brazil	35,000	41,700	51,000	57,500	57,000	57,000
Canada	8,837	9,361	8,990	11,650	9,700	9,700
China, Peoples Republic of	130,290	139,365	151,600	151,830	153,000	153,000
Egypt	5,840	5,932	6,149	6,174	6,175	6,175
EU-27	66,471	60,668	53,829	47,324	57,462	58,585
India	14,180	14,710	15,100	19,310	18,500	18,000
Indonesia	7,200	6,500	6,700	7,500	7,750	7,750
Mexico	22,050	19,500	22,350	22,650	23,000	23,000
Nigeria	6,500	7,000	7,800	6,500	7,800	7,800
Philippines	5,050	5,884	6,231	7,250	7,300	7,300
Russian Federation	3,500	3,200	3,600	3,950	5,800	5,800
Serbia	nr	nr	6,415	4,054	6,500	6,500
South Africa, Republic of	11,716	6,935	7,300	12,000	11,500	11,500
Ukraine	8,800	7,150	6,400	7,400	9,500	9,500
Others	69,922	72,491	68,671	70,966	73,228	73,848
<b>Subtotal</b>	415,856	416,196	444,635	457,058	477,715	477,458
<b>United States</b>	299,914	282,311	267,598	332,092	297,575	312,126
<b>World Total</b>	715,770	698,507	712,233	789,150	775,290	789,584
<b>Total Consumption</b>						
Argentina	5,200	6,200	6,700	6,500	6,900	6,700
Brazil	38,500	39,500	41,000	42,500	45,000	45,000
Canada	10,311	10,837	11,436	13,800	12,600	12,600
China, Peoples Republic of	131,000	137,000	145,000	149,000	157,000	157,000
Egypt	11,300	10,100	10,700	10,400	10,600	10,600
EU-27	63,200	61,500	62,300	61,500	62,000	61,000
India	13,900	14,200	13,900	16,900	16,300	16,100
Indonesia	7,900	7,900	7,900	7,700	8,200	8,200
Japan	16,500	16,700	16,500	16,500	16,100	16,100
Korea, Republic of	8,666	8,579	8,833	9,100	8,800	8,300
Mexico	27,900	27,900	30,700	32,000	33,000	33,000
Nigeria	6,300	6,800	7,600	6,550	7,700	7,700
Philippines	5,150	5,800	6,550	7,150	7,350	7,350
South Africa, Republic of	9,700	8,200	8,600	9,100	9,000	9,000
Ukraine	6,000	5,100	5,250	5,700	6,200	6,200
Others	101,803	106,047	111,599	114,925	119,187	119,437
<b>Subtotal</b>	464,297	473,876	497,606	511,130	528,028	526,728
<b>United States</b>	224,648	232,063	230,769	264,044	266,586	272,936
<b>World Total</b>	688,945	705,939	728,375	775,174	794,614	799,664
<b>Ending Stocks</b>						
Brazil	4,192	3,015	3,579	10,329	9,829	13,829
China, Peoples Republic of	36,555	35,255	36,602	38,882	34,632	34,482
EU-27	8,108	9,461	7,382	5,706	8,818	6,291
Iran	1,552	1,647	2,247	2,347	2,047	2,047
Korea, Republic of	1,401	1,383	1,352	1,436	1,416	1,416
Mexico	4,529	2,707	3,084	2,834	3,084	3,234
South Africa, Republic of	3,190	2,308	1,661	3,261	2,761	3,461
Others	18,830	18,878	19,459	17,640	21,580	18,826
<b>Subtotal</b>	78,357	74,654	75,366	82,435	84,167	83,586
<b>United States</b>	53,697	49,968	33,114	40,021	21,147	28,790
<b>World Total</b>	132,054	124,622	108,480	122,456	105,314	112,376



## Regional Corn Imports, Production, Consumption, and Stocks

Thousand Metric Tons

	2004/05	2005/06	2006/07	2007/08	Jul 2008/09	Aug 2008/09
<b>TY Imports</b>						
North America	8,463	8,959	11,489	12,675	13,600	13,600
Central America	2,401	2,803	2,906	2,860	3,000	3,000
Caribbean	1,913	1,969	2,223	2,060	2,210	2,210
South America	5,738	8,146	9,276	9,575	8,920	8,920
European Union	2,469	2,634	7,056	13,000	6,500	4,000
Other Europe	422	410	575	525	475	475
Former Soviet Union - 12	559	649	501	450	225	225
Middle East	8,039	7,381	10,270	10,050	9,525	9,425
North Africa	10,112	9,044	10,111	9,350	10,100	10,100
Sub-Saharan Africa	2,150	2,764	1,706	1,396	1,045	1,045
East Asia	30,099	29,954	29,860	30,275	29,625	28,925
South Asia	40	33	48	15	10	10
Southeast Asia	3,492	4,890	4,649	3,835	4,510	4,510
Oceania	3	23	9	25	0	0
<b>Total</b>	<b>75,900</b>	<b>79,659</b>	<b>90,679</b>	<b>96,091</b>	<b>89,745</b>	<b>86,445</b>
<b>Production</b>						
North America	330,801	311,172	298,938	366,392	330,275	344,826
Central America	2,595	2,616	2,852	3,131	3,131	3,131
Caribbean	741	656	643	657	657	657
South America	63,565	65,826	83,335	88,346	90,649	89,149
European Union	66,471	60,668	53,829	47,324	57,462	58,585
Other Europe	10,199	10,333	9,350	7,239	10,285	10,355
Former Soviet Union - 12	15,424	13,289	12,849	13,790	18,715	18,915
Middle East	5,656	6,439	5,183	5,518	5,994	6,494
North Africa	6,042	6,134	6,351	6,376	6,377	6,377
Sub-Saharan Africa	41,512	38,351	42,468	47,132	47,222	47,222
East Asia	132,081	141,106	153,453	153,562	154,781	154,781
South Asia	18,871	19,920	20,115	24,330	23,520	22,870
Southeast Asia	21,330	21,445	22,455	24,794	25,650	25,650
Oceania	482	552	412	559	572	572
<b>Total</b>	<b>715,770</b>	<b>698,507</b>	<b>712,233</b>	<b>789,150</b>	<b>775,290</b>	<b>789,584</b>
<b>Domestic Consumption</b>						
North America	262,859	270,800	272,905	309,844	312,186	318,536
Central America	5,125	5,240	5,700	5,925	6,200	6,200
Caribbean	2,597	2,656	2,758	2,815	2,952	2,952
South America	56,033	59,949	63,372	65,795	68,795	68,795
European Union	63,200	61,500	62,300	61,500	62,000	61,000
Other Europe	9,474	9,426	8,995	8,105	8,985	8,985
Former Soviet Union - 12	12,749	11,908	12,144	12,675	14,460	14,760
Middle East	13,202	13,526	14,473	15,928	15,903	16,003
North Africa	15,702	14,871	16,061	15,800	16,600	16,600
Sub-Saharan Africa	41,236	40,476	43,875	44,196	45,012	45,012
East Asia	163,073	168,788	176,719	180,712	188,375	187,675
South Asia	18,508	19,319	18,982	21,945	21,320	20,970
Southeast Asia	23,710	25,422	26,613	27,579	29,185	29,185
Oceania	510	545	440	550	550	550
<b>Total</b>	<b>687,978</b>	<b>704,426</b>	<b>725,337</b>	<b>773,369</b>	<b>792,523</b>	<b>797,223</b>
<b>Ending Stocks</b>						
North America	60,028	54,676	37,541	44,548	25,524	33,317
Central America	577	671	727	783	704	704
Caribbean	177	146	254	156	71	71
South America	8,879	7,266	8,092	13,773	14,112	17,412
European Union	8,108	9,461	7,382	5,706	8,818	6,291
Other Europe	1,254	1,167	1,156	650	1,344	1,395
Former Soviet Union - 12	2,145	1,657	1,766	1,251	2,576	1,751
Middle East	2,625	2,751	3,490	3,120	2,786	3,036
North Africa	1,061	1,314	1,584	1,460	1,437	1,337
Sub-Saharan Africa	4,437	3,664	3,583	5,415	4,770	5,470
East Asia	39,863	38,352	39,775	42,200	37,781	37,831
South Asia	833	946	919	1,119	3,159	1,529
Southeast Asia	2,036	2,515	2,171	2,236	2,176	2,176
Oceania	31	36	40	39	56	56
<b>Total</b>	<b>132,054</b>	<b>124,622</b>	<b>108,480</b>	<b>122,456</b>	<b>105,314</b>	<b>112,376</b>

<b>2004/05</b>	<b>2005/06</b>	<b>2006/07</b>	<b>2007/08</b>	<b>Jul 2008/09</b>	<b>Aug 2008/09</b>
----------------	----------------	----------------	----------------	------------------------	------------------------

NOTES: Regional definitions appear on last page of this circular. Imports are reported on a trade year basis. All other data are reported using local marketing years.

**World Barley Trade**  
**October/September Year, Thousand Metric Tons**

	2004/05	2005/06	2006/07	2007/08	2008/09 Jul	2008/09 Aug
<b>TY Exports</b>						
Argentina	338	309	537	800	1,150	1,150
Australia	4,481	5,231	1,927	3,000	4,000	4,000
Canada	1,476	1,876	1,337	3,000	1,150	1,600
EU-27	4,240	2,587	4,389	3,400	4,500	3,500
Kazakhstan, Republic of	100	100	600	1,200	800	800
Russian Federation	1,488	1,397	1,691	1,000	1,600	2,100
Serbia	nr	nr	5	5	5	5
Syria	50	50	50	50	50	50
Ukraine	3,992	4,926	2,910	2,000	4,500	5,000
Uruguay	20	37	200	100	100	100
Others	30	558	250	385	0	0
<b>Subtotal</b>	16,215	17,071	13,896	14,940	17,855	18,305
<b>United States</b>	771	357	528	1,000	550	550
<b>World Total</b>	16,986	17,428	14,424	15,940	18,405	18,855
<b>TY Imports</b>						
Belarus	50	130	50	50	200	200
Brazil	182	153	291	300	250	250
China, Peoples Republic of	2,049	2,217	1,127	1,200	1,300	1,300
Colombia	234	198	243	250	225	225
Iran	1,291	587	300	500	1,200	1,200
Iraq	0	0	0	0	300	300
Israel	313	314	224	250	300	300
Japan	1,522	1,417	1,359	1,350	1,400	1,400
Jordan	607	811	804	500	600	600
Kuwait	214	203	200	200	200	200
Morocco	565	444	400	700	1,000	1,000
Saudi Arabia	6,500	7,106	6,000	6,500	6,600	7,000
Syria	500	612	228	300	850	850
Tunisia	514	606	866	500	700	700
Turkey	69	52	57	350	350	450
Others	1,769	1,794	1,722	1,980	1,905	1,905
<b>Subtotal</b>	16,379	16,644	13,871	14,930	17,380	17,880
<b>Unaccounted</b>	450	660	199	410	590	425
<b>United States</b>	157	124	354	600	435	550
<b>World Total</b>	16,986	17,428	14,424	15,940	18,405	18,855

TY=Trade Year, see Endnotes.

**World Barley Production, Consumption, and Stocks**  
**Local Marketing Years, Thousand Metric Tons**

	2004/05	2005/06	2006/07	2007/08	2008/09 Jul	2008/09 Aug
<b>Production</b>						
Argentina	886	800	1,265	1,460	2,050	2,050
Australia	7,740	9,483	4,257	5,920	8,500	8,500
Belarus	2,000	1,800	1,350	1,700	1,400	1,500
Canada	12,557	11,678	9,573	11,000	10,000	10,500
China, Peoples Republic of	3,222	3,400	3,300	3,185	3,500	3,500
Ethiopia	1,575	1,785	2,125	2,500	2,100	2,100
EU-27	64,085	54,752	56,214	57,800	60,790	62,701
India	1,300	1,200	1,220	1,330	1,400	1,400
Iran	2,940	2,857	3,000	3,000	2,000	2,000
Kazakhstan, Republic of	1,500	1,500	1,900	2,500	2,000	2,000
Mexico	932	753	900	900	900	900
Morocco	2,760	1,102	2,535	763	1,200	1,200
Russian Federation	17,200	15,800	18,100	15,650	17,500	18,000
Turkey	7,400	7,600	7,500	6,000	6,200	6,000
Ukraine	11,100	9,000	11,350	6,000	10,500	12,000
Others	9,386	8,633	8,912	8,936	7,886	7,731
<b>Subtotal</b>	<b>146,583</b>	<b>132,143</b>	<b>133,501</b>	<b>128,644</b>	<b>137,926</b>	<b>142,082</b>
<b>United States</b>	<b>6,091</b>	<b>4,613</b>	<b>3,923</b>	<b>4,612</b>	<b>4,742</b>	<b>4,746</b>
<b>World Total</b>	<b>152,674</b>	<b>136,756</b>	<b>137,424</b>	<b>133,256</b>	<b>142,668</b>	<b>146,828</b>
<b>Total Consumption</b>						
Australia	3,450	3,450	3,750	3,650	3,900	3,900
Belarus	1,875	1,950	1,650	1,750	1,775	1,775
Canada	10,138	9,611	10,196	8,400	8,850	9,000
China, Peoples Republic of	5,350	5,550	4,535	4,285	4,700	4,700
Ethiopia	1,575	1,785	2,125	2,500	2,100	2,100
EU-27	54,580	54,050	55,851	54,397	55,300	55,500
India	1,300	1,200	1,220	1,130	1,400	1,400
Iran	3,540	3,757	4,000	3,600	3,600	3,600
Japan	1,650	1,650	1,650	1,580	1,550	1,550
Kazakhstan, Republic of	1,550	1,400	1,374	1,350	1,300	1,300
Morocco	2,625	2,525	2,475	2,200	2,200	2,200
Russian Federation	16,500	15,500	16,400	15,300	15,900	15,900
Saudi Arabia	5,610	6,510	6,810	6,810	6,710	6,910
Turkey	7,300	7,300	7,300	6,700	6,700	6,500
Ukraine	6,400	4,900	6,500	5,630	6,000	6,300
Others	14,171	14,484	14,291	14,257	14,447	14,292
<b>Subtotal</b>	<b>136,739</b>	<b>136,559</b>	<b>140,608</b>	<b>133,413</b>	<b>136,816</b>	<b>137,352</b>
<b>United States</b>	<b>5,672</b>	<b>4,570</b>	<b>4,596</b>	<b>4,413</b>	<b>4,571</b>	<b>4,572</b>
<b>World Total</b>	<b>142,411</b>	<b>141,129</b>	<b>145,204</b>	<b>137,826</b>	<b>141,387</b>	<b>141,924</b>
<b>Ending Stocks</b>						
Australia	1,916	2,682	1,289	559	1,659	1,159
Canada	3,435	3,289	1,485	1,035	1,135	1,035
EU-27	11,063	8,535	5,642	5,330	6,420	9,131
Japan	642	597	480	445	467	467
Russian Federation	2,110	873	1,226	726	926	926
Saudi Arabia	1,978	2,519	2,409	1,899	1,489	1,989
Ukraine	991	1,193	960	680	705	1,405
Others	7,865	6,385	5,652	3,914	3,091	3,206
<b>Subtotal</b>	<b>30,000</b>	<b>26,073</b>	<b>19,143</b>	<b>14,588</b>	<b>15,892</b>	<b>19,318</b>
<b>United States</b>	<b>2,796</b>	<b>2,350</b>	<b>1,500</b>	<b>1,485</b>	<b>1,547</b>	<b>1,659</b>
<b>World Total</b>	<b>32,796</b>	<b>28,423</b>	<b>20,643</b>	<b>16,073</b>	<b>17,439</b>	<b>20,977</b>

**Regional Barley Imports, Production, Consumption, and Stocks**  
**Thousand Metric Tons**

	2003/04	2004/05	2005/06	2006/07	2007/08	Aug 2008/09
<b>TY Imports</b>						
North America	567	291	201	475	800	775
South America	440	538	506	778	790	665
European Union	654	212	168	167	285	100
Other Europe	178	102	161	215	255	260
Former Soviet Union - 12	706	327	380	355	415	435
Middle East	8,304	9,699	10,057	8,023	8,810	11,135
North Africa	601	1,473	1,386	1,566	1,370	2,060
Sub-Saharan Africa	69	102	81	51	100	100
East Asia	3,047	3,768	3,808	2,594	2,700	2,875
South Asia	0	0	0	0	0	0
Oceania	6	24	20	1	5	25
<b>Total</b>	<b>14,572</b>	<b>16,536</b>	<b>16,768</b>	<b>14,225</b>	<b>15,530</b>	<b>18,430</b>
<b>Production</b>						
North America	19,305	19,580	17,044	14,396	16,512	16,146
South America	2,039	2,065	1,827	2,287	2,550	3,255
European Union	55,818	64,085	54,752	56,214	57,800	62,701
Other Europe	1,405	1,769	1,589	1,577	1,494	1,502
Former Soviet Union - 12	29,629	33,206	29,450	33,951	27,067	34,925
Middle East	12,094	11,926	12,335	12,520	10,840	8,710
North Africa	4,795	4,719	2,212	3,835	2,243	2,495
Sub-Saharan Africa	1,764	1,871	2,152	2,511	2,855	2,455
East Asia	3,136	3,678	3,848	3,734	3,640	3,932
South Asia	1,789	1,655	1,664	1,742	1,935	1,807
Oceania	10,765	8,120	9,883	4,657	6,320	8,900
<b>Total</b>	<b>142,539</b>	<b>152,674</b>	<b>136,756</b>	<b>137,424</b>	<b>133,256</b>	<b>146,828</b>
<b>Domestic Consumption</b>						
North America	15,669	16,760	15,131	15,762	13,863	14,597
South America	2,166	2,317	2,178	2,282	2,550	2,665
European Union	58,007	54,580	54,050	55,851	54,397	55,500
Other Europe	1,600	1,815	1,761	1,771	1,735	1,760
Former Soviet Union - 12	29,502	27,566	25,164	27,170	25,382	26,715
Middle East	20,574	20,211	21,622	21,902	20,550	20,300
North Africa	4,277	5,089	4,918	4,940	4,455	4,595
Sub-Saharan Africa	1,774	1,986	2,220	2,575	2,950	2,550
East Asia	6,719	7,457	7,634	6,553	6,275	6,685
South Asia	1,779	1,655	1,664	1,742	1,735	1,807
Oceania	3,450	3,850	3,850	4,175	4,060	4,325
<b>Total</b>	<b>145,517</b>	<b>143,286</b>	<b>140,192</b>	<b>144,723</b>	<b>137,952</b>	<b>141,499</b>
<b>Ending Stocks</b>						
North America	4,921	6,470	5,712	3,055	2,590	2,764
South America	404	331	163	276	136	141
European Union	4,524	11,063	8,535	5,642	5,330	9,131
Other Europe	242	295	268	284	288	285
Former Soviet Union - 12	3,727	4,195	3,086	2,963	2,113	2,858
Middle East	4,242	5,027	5,639	4,784	3,609	3,104
North Africa	1,592	2,516	1,303	1,577	735	695
Sub-Saharan Africa	58	45	58	45	50	55
East Asia	850	839	858	633	598	720
South Asia	34	34	34	34	34	34
Oceania	1,939	1,981	2,767	1,350	590	1,190
<b>Total</b>	<b>22,533</b>	<b>32,796</b>	<b>28,423</b>	<b>20,643</b>	<b>16,073</b>	<b>20,977</b>

NOTES: Regional definitions appear on last page of this circular. Imports are reported on a trade year basis. All other data are reported using local marketing years.

**World Sorghum Trade**  
**October/September Year, Thousand Metric Tons**

	2004/05	2005/06	2006/07	2007/08	2008/09 Jul	2008/09 Aug
<b>TY Exports</b>						
Argentina	279	226	959	1,000	1,300	1,300
Australia	370	190	17	250	250	250
Brazil	24	0	115	150	200	200
China, Peoples Republic of	28	26	144	250	150	150
India	24	4	8	25	25	25
Nigeria	50	50	50	50	50	50
South Africa, Republic of	36	23	25	25	25	25
Others	14	16	73	135	50	50
<b>Subtotal</b>	825	535	1,391	1,885	2,050	2,050
<b>United States</b>	4,541	4,961	4,380	6,500	4,000	3,300
<b>World Total</b>	5,366	5,496	5,771	8,385	6,050	5,350
<b>TY Imports</b>						
Chile	71	43	158	150	150	150
Eritrea	81	25	25	30	30	30
EU-27	218	77	1,474	5,000	2,000	1,500
Israel	34	44	78	150	100	100
Japan	1,374	1,393	1,276	1,150	1,350	1,350
Mexico	2,931	3,029	1,954	1,100	1,500	1,300
Niger	50	50	50	50	50	50
Norway	0	0	0	135	25	25
Sudan	160	211	300	300	300	300
Taiwan	61	69	64	50	50	50
Others	238	391	196	150	65	65
<b>Subtotal</b>	5,218	5,332	5,575	8,265	5,620	4,920
<b>Unaccounted</b>	147	164	194	120	430	430
<b>United States</b>	1	0	2	0	0	0
<b>World Total</b>	5,366	5,496	5,771	8,385	6,050	5,350

TY=Trade Year, see Endnotes.

**World Sorghum Production, Consumption, and Stocks**  
**Local Marketing Years, Thousand Metric Tons**

	2004/05	2005/06	2006/07	2007/08	2008/09 Jul	2008/09 Aug
<b>Production</b>						
Argentina	2,900	2,200	3,300	3,500	4,300	4,300
Australia	2,011	1,929	1,283	2,691	2,000	2,000
Brazil	2,051	1,543	1,500	1,700	2,000	2,000
Burkina	1,400	1,837	1,800	1,800	1,800	1,800
China, Peoples Republic of	2,328	2,546	2,000	1,900	1,800	1,800
Egypt	900	900	900	900	900	900
Ethiopia	2,150	2,800	3,325	3,230	3,300	3,300
EU-27	499	489	560	530	504	464
India	7,240	7,630	7,150	7,780	7,000	6,500
Mexico	5,890	5,500	5,810	6,100	6,000	6,200
Niger	500	750	800	800	800	800
Nigeria	10,000	10,500	10,500	10,000	10,500	10,500
Sudan	2,700	4,275	5,200	4,500	4,700	4,700
Tanzania, United Republic	820	890	850	900	900	900
Uganda	400	450	490	490	490	490
Others	4,331	4,171	4,437	4,326	4,353	4,353
<b>Subtotal</b>	46,120	48,410	49,905	51,147	51,347	51,007
<b>United States</b>	11,523	9,981	7,050	12,827	10,668	10,418
<b>World Total</b>	57,643	58,391	56,955	63,974	62,015	61,425
<b>Total Consumption</b>						
Argentina	2,600	2,200	2,200	2,500	2,650	2,650
Australia	1,755	1,895	1,221	2,393	1,805	1,805
Brazil	2,100	1,593	1,300	1,475	1,705	1,705
Burkina	1,400	1,837	1,800	1,800	1,800	1,800
China, Peoples Republic of	2,400	2,500	1,950	1,700	1,600	1,600
Egypt	900	900	900	900	900	900
Ethiopia	2,150	2,600	3,100	3,230	3,325	3,325
EU-27	521	683	1,120	5,870	2,770	2,270
India	7,200	7,500	7,100	7,765	7,000	6,530
Japan	1,400	1,400	1,350	1,150	1,350	1,350
Mexico	9,300	8,600	8,100	7,100	7,500	7,400
Niger	550	750	825	925	870	870
Nigeria	9,950	10,450	10,450	9,950	10,450	10,450
Sudan	3,500	4,250	4,953	5,205	4,980	4,980
Tanzania, United Republic	820	890	850	900	900	900
Others	5,107	5,155	5,288	5,457	5,275	5,275
<b>Subtotal</b>	51,752	53,344	53,299	58,652	55,519	54,387
<b>United States</b>	6,255	4,823	4,030	5,334	6,604	6,859
<b>World Total</b>	58,007	58,167	57,329	63,986	62,123	61,246
<b>Ending Stocks</b>						
Argentina	328	128	228	128	378	378
China, Peoples Republic of	156	185	95	55	110	110
Ethiopia	0	200	425	425	400	400
India	80	206	247	237	206	182
Mexico	624	553	217	317	317	417
Nigeria	200	200	200	200	200	200
Sudan	313	547	1,042	537	532	532
Others	1,150	834	879	913	566	515
<b>Subtotal</b>	2,851	2,853	3,333	2,812	2,709	2,734
<b>United States</b>	1,446	1,668	814	1,323	1,577	1,580
<b>World Total</b>	4,297	4,521	4,147	4,135	4,286	4,314

**Regional Sorghum Imports, Production, Consumption, and Stocks**  
**Thousand Metric Tons**

	2004/05	2005/06	2006/07	2007/08	Jul 2008/09	Aug 2008/09
<b>TY Imports</b>						
North America	2,932	3,029	1,956	1,100	1,500	1,300
Central America	4	0	0	0	0	0
Caribbean	0	0	0	0	0	0
South America	158	69	252	160	155	155
European Union	218	77	1,474	5,000	2,000	1,500
Other Europe	0	0	0	135	25	25
Middle East	34	44	78	150	100	100
North Africa	0	35	0	0	0	0
Sub-Saharan Africa	412	586	456	475	400	400
East Asia	1,450	1,485	1,349	1,225	1,420	1,420
South Asia	4	0	3	0	0	0
Southeast Asia	7	7	9	20	20	20
Oceania	0	0	0	0	0	0
<b>Total</b>	<b>5,219</b>	<b>5,332</b>	<b>5,577</b>	<b>8,265</b>	<b>5,620</b>	<b>4,920</b>
<b>Production</b>						
North America	17,413	15,481	12,860	18,927	16,668	16,618
Central America	330	307	326	326	326	326
Caribbean	128	128	128	128	128	128
South America	5,874	4,664	5,622	5,924	7,054	7,054
European Union	499	489	560	530	504	464
Other Europe	0	0	0	0	0	0
Middle East	568	494	671	665	675	675
North Africa	915	915	915	915	915	915
Sub-Saharan Africa	20,045	23,570	25,212	23,947	24,710	24,710
East Asia	2,341	2,554	2,008	1,920	1,820	1,820
South Asia	7,426	7,783	7,305	7,931	7,145	6,645
Southeast Asia	93	77	65	70	70	70
Oceania	2,011	1,929	1,283	2,691	2,000	2,000
<b>Total</b>	<b>57,643</b>	<b>58,391</b>	<b>56,955</b>	<b>63,974</b>	<b>62,015</b>	<b>61,425</b>
<b>Domestic Consumption</b>						
North America	15,555	13,423	12,130	12,434	14,104	14,259
Central America	355	310	325	331	325	325
Caribbean	128	128	128	128	128	128
South America	5,679	4,770	4,492	4,854	5,276	5,276
European Union	521	683	1,120	5,870	2,770	2,270
Other Europe	0	0	0	135	25	25
Middle East	610	538	724	828	787	787
North Africa	915	950	915	915	915	915
Sub-Saharan Africa	21,039	23,616	24,785	24,835	25,095	25,095
East Asia	3,886	3,984	3,375	2,940	3,039	3,039
South Asia	7,387	7,653	7,255	7,916	7,145	6,675
Southeast Asia	78	76	67	75	70	70
Oceania	1,755	1,895	1,221	2,393	1,805	1,805
<b>Total</b>	<b>57,908</b>	<b>58,026</b>	<b>56,537</b>	<b>63,654</b>	<b>61,484</b>	<b>60,669</b>
<b>Ending Stocks</b>						
North America	2,070	2,221	1,031	1,640	1,894	1,997
Central America	16	17	18	13	14	14
Caribbean	0	0	0	0	0	0
South America	570	338	396	278	511	511
European Union	234	90	178	328	73	22
Other Europe	0	0	0	0	0	0
Middle East	36	36	61	48	36	36
North Africa	39	39	39	39	39	39
Sub-Saharan Africa	773	1,163	1,919	1,346	1,261	1,261
East Asia	342	371	209	164	215	215
South Asia	80	206	247	237	206	182
Southeast Asia	23	17	6	1	1	1
Oceania	114	23	43	41	36	36
<b>Total</b>	<b>4,297</b>	<b>4,521</b>	<b>4,147</b>	<b>4,135</b>	<b>4,286</b>	<b>4,314</b>



<b>2004/05</b>	<b>2005/06</b>	<b>2006/07</b>	<b>2007/08</b>	<b>Jul 2008/09</b>	<b>Aug 2008/09</b>
----------------	----------------	----------------	----------------	------------------------	------------------------

NOTES: Regional definitions appear on last page of this circular. Imports are reported on a trade year basis. All other data are reported using local marketing years.

**World Oats Trade**  
**October/September Year, Thousand Metric Tons**

	2004/05	2005/06	2006/07	2007/08	2008/09 Jul	2008/09 Aug
<b>TY Exports</b>						
Argentina	2	1	2	5	5	5
Australia	137	191	75	125	175	175
Canada	1,374	1,754	1,921	2,100	1,575	1,575
Chile	29	27	41	25	25	25
EU-27	356	231	124	150	400	400
Kazakhstan, Republic of	5	5	9	5	5	5
Others	21	5	13	25	0	0
<b>Subtotal</b>	1,924	2,214	2,185	2,435	2,185	2,185
<b>United States</b>	31	40	33	50	40	40
<b>World Total</b>	1,955	2,254	2,218	2,485	2,225	2,225
<b>TY Imports</b>						
Canada	16	21	18	20	25	25
China, Peoples Republic of	13	18	9	20	20	20
Colombia	26	26	18	25	25	25
Ecuador	0	5	14	25	5	5
EU-27	1	2	5	5	5	5
Japan	67	59	62	60	60	60
Mexico	51	83	57	100	50	50
Morocco	1	1	5	5	5	5
Norway	2	48	59	50	50	50
South Africa, Republic of	42	18	13	25	25	25
Switzerland	26	48	42	50	50	50
Others	15	9	36	20	0	0
<b>Subtotal</b>	260	338	338	405	320	320
<b>Unaccounted</b>	66	85	86	98	105	105
<b>United States</b>	1,629	1,831	1,794	1,982	1,800	1,800
<b>World Total</b>	1,955	2,254	2,218	2,485	2,225	2,225

TY=Trade Year, see Endnotes.

**World Oats Production, Consumption, and Stocks**  
**Local Marketing Years, Thousand Metric Tons**

	2004/05	2005/06	2006/07	2007/08	2008/09 Jul	2008/09 Aug
<b>Production</b>						
Algeria	80	80	80	80	80	80
Argentina	508	350	400	470	500	500
Australia	1,283	1,690	748	843	1,500	1,500
Belarus	770	600	550	600	600	650
Brazil	433	517	475	475	475	475
Canada	3,467	3,283	3,852	4,700	3,500	3,500
Chile	425	420	380	380	380	380
China, Peoples Republic of	600	600	600	600	600	600
EU-27	9,146	7,968	7,768	8,849	9,011	8,791
Kazakhstan, Republic of	140	140	140	160	160	160
Norway	359	360	360	360	360	360
Russian Federation	4,950	4,550	4,900	5,400	4,800	5,000
Serbia	nr	nr	120	120	120	120
Turkey	290	290	290	290	290	290
Ukraine	1,000	800	700	550	700	800
Others	537	546	443	417	417	417
<b>Subtotal</b>	23,988	22,194	21,806	24,294	23,493	23,623
<b>United States</b>	1,679	1,667	1,359	1,330	1,348	1,305
<b>World Total</b>	25,667	23,861	23,165	25,624	24,841	24,928
<b>Total Consumption</b>						
Argentina	500	350	400	455	500	500
Australia	1,175	1,400	865	775	1,175	1,175
Belarus	700	650	550	600	600	650
Brazil	425	515	475	475	475	475
Canada	1,978	1,966	2,288	2,400	2,050	2,050
Chile	400	400	350	350	350	350
China, Peoples Republic of	610	620	615	615	625	625
EU-27	8,719	7,868	7,647	8,615	8,700	8,491
Kazakhstan, Republic of	135	135	135	155	155	155
Mexico	126	137	175	180	130	130
Norway	360	410	420	410	410	410
Russian Federation	4,900	4,600	4,900	5,400	4,800	5,000
Serbia	nr	nr	120	120	120	120
Turkey	290	290	290	300	290	290
Ukraine	1,000	800	700	525	700	800
Others	710	713	606	617	582	582
<b>Subtotal</b>	22,116	20,906	20,497	21,939	21,761	21,902
<b>United States</b>	3,297	3,287	3,181	3,177	3,116	3,116
<b>World Total</b>	25,413	24,193	23,678	25,116	24,877	25,018
<b>Ending Stocks</b>						
Argentina	83	82	77	87	82	82
Australia	261	360	168	111	261	261
Canada	974	872	551	771	671	671
China, Peoples Republic of	109	107	101	106	101	101
EU-27	906	772	804	893	798	798
Norway	34	32	35	35	35	35
Russian Federation	240	190	190	190	190	190
Others	183	121	126	131	141	141
<b>Subtotal</b>	2,790	2,536	2,052	2,324	2,279	2,279
<b>United States</b>	841	763	734	970	968	925
<b>World Total</b>	3,631	3,299	2,786	3,294	3,247	3,204

**Regional Oats Imports, Production, Consumption, and Stocks**  
**Thousand Metric Tons**

	2004/05	2005/06	2006/07	2007/08	Jul 2008/09	Aug 2008/09
<b>TY Imports</b>						
North America	1,696	1,935	1,869	2,102	1,875	1,875
South America	26	31	33	50	30	30
European Union	1	2	5	5	5	5
Other Europe	34	101	105	105	100	100
Former Soviet Union - 12	7	0	6	0	0	0
Middle East	0	0	16	10	0	0
North Africa	3	5	14	10	5	5
Sub-Saharan Africa	42	18	13	25	25	25
East Asia	80	77	71	80	80	80
Oceania	0	0	0	0	0	0
<b>Total</b>	<b>1,889</b>	<b>2,169</b>	<b>2,132</b>	<b>2,387</b>	<b>2,120</b>	<b>2,120</b>
<b>Production</b>						
North America	5,221	5,030	5,291	6,110	4,928	4,885
South America	1,397	1,316	1,303	1,348	1,378	1,378
European Union	9,146	7,968	7,768	8,849	9,011	8,791
Other Europe	628	637	637	637	637	637
Former Soviet Union - 12	6,870	6,098	6,296	6,715	6,265	6,615
Middle East	290	290	290	290	290	290
North Africa	110	110	110	110	110	110
Sub-Saharan Africa	45	45	45	45	45	45
East Asia	602	602	602	602	602	602
Oceania	1,358	1,765	823	918	1,575	1,575
<b>Total</b>	<b>25,667</b>	<b>23,861</b>	<b>23,165</b>	<b>25,624</b>	<b>24,841</b>	<b>24,928</b>
<b>Domestic Consumption</b>						
North America	5,401	5,390	5,644	5,757	5,296	5,296
South America	1,382	1,325	1,298	1,353	1,378	1,378
European Union	8,719	7,868	7,647	8,615	8,700	8,491
Other Europe	664	739	752	742	732	732
Former Soviet Union - 12	6,745	6,193	6,291	6,685	6,260	6,610
Middle East	290	290	290	300	290	290
North Africa	110	115	120	120	115	115
Sub-Saharan Africa	87	63	58	70	70	70
East Asia	677	683	677	677	687	687
Oceania	1,250	1,475	940	850	1,250	1,250
<b>Total</b>	<b>25,325</b>	<b>24,141</b>	<b>23,717</b>	<b>25,169</b>	<b>24,778</b>	<b>24,919</b>
<b>Ending Stocks</b>						
North America	1,818	1,638	1,289	1,745	1,643	1,600
South America	118	112	112	127	127	127
European Union	906	772	804	893	798	798
Other Europe	50	48	51	51	56	56
Former Soviet Union - 12	351	246	243	243	243	243
Middle East	0	0	0	0	0	0
North Africa	1	1	1	1	1	1
Sub-Saharan Africa	12	12	12	12	12	12
East Asia	114	110	106	111	106	106
Oceania	261	360	168	111	261	261
<b>Total</b>	<b>3,631</b>	<b>3,299</b>	<b>2,786</b>	<b>3,294</b>	<b>3,247</b>	<b>3,204</b>

NOTES: Regional definitions appear on last page of this circular. Imports are reported on a trade year basis. All other data are reported using local marketing years.

**World Rye Trade**  
**October/September Year, Thousand Metric Tons**

	2004/05	2005/06	2006/07	2007/08	2008/09 Jul	2008/09 Aug
<b>TY Exports</b>						
Belarus	50	50	75	150	50	50
Canada	123	141	207	150	50	50
EU-27	677	381	313	65	300	300
Russian Federation	0	0	64	100	75	100
Ukraine	122	49	0	10	100	100
Others	0	0	0	0	0	0
<b>Subtotal</b>	972	621	659	475	575	600
<b>United States</b>	2	1	2	6	5	5
<b>World Total</b>	974	622	661	481	580	605
<b>TY Imports</b>						
EU-27	6	2	36	100	50	50
Israel	111	102	71	15	100	100
Japan	261	279	258	100	250	250
Korea, Republic of	8	7	8	5	5	5
Norway	13	4	22	5	20	20
Switzerland	2	9	4	5	5	5
Turkey	61	2	18	25	5	5
Others	189	72	57	25	0	0
<b>Subtotal</b>	651	477	474	280	435	435
<b>Unaccounted</b>	149	15	51	26	20	45
<b>United States</b>	174	130	136	175	125	125
<b>World Total</b>	974	622	661	481	580	605

TY=Trade Year, see Endnotes.

**World Rye Production, Consumption, and Stocks**  
**Local Marketing Years, Thousand Metric Tons**

	2004/05	2005/06	2006/07	2007/08	2008/09 Jul	2008/09 Aug
<b>Production</b>						
Argentina	89	55	55	55	55	55
Belarus	1,400	1,150	1,200	1,300	1,100	1,100
Canada	398	330	383	230	260	290
EU-27	10,031	7,688	6,541	7,639	9,116	9,175
Russian Federation	2,850	3,600	3,000	3,900	4,000	4,400
Turkey	240	240	240	240	240	240
Ukraine	1,600	1,050	600	550	850	1,000
Others	184	188	180	187	187	187
<b>Subtotal</b>	16,792	14,301	12,199	14,101	15,808	16,447
<b>United States</b>	210	191	183	201	183	183
<b>World Total</b>	17,002	14,492	12,382	14,302	15,991	16,630
<b>Total Consumption</b>						
Argentina	89	55	55	55	55	55
Belarus	1,325	1,100	1,125	1,200	1,100	1,100
Canada	211	187	187	140	215	215
EU-27	10,135	8,620	7,241	7,875	8,300	8,300
Israel	111	102	101	15	100	100
Japan	261	279	258	100	250	250
Norway	51	41	55	42	57	57
Russian Federation	3,300	3,600	3,100	3,825	3,650	4,025
Turkey	299	247	245	265	245	245
Ukraine	1,300	1,050	800	550	700	850
Others	169	186	154	160	160	160
<b>Subtotal</b>	17,323	15,454	13,407	14,285	14,797	15,347
<b>United States</b>	344	332	337	375	358	358
<b>World Total</b>	17,667	15,786	13,744	14,660	15,155	15,705
<b>Ending Stocks</b>						
Belarus	164	164	164	114	64	64
Canada	108	119	107	22	17	47
EU-27	3,156	1,874	775	564	1,130	1,189
Japan	20	20	20	20	20	20
Russian Federation	77	126	76	76	351	351
Ukraine	336	267	72	62	112	112
Others	1	0	0	0	0	0
<b>Subtotal</b>	3,862	2,570	1,214	858	1,694	1,783
<b>United States</b>	20	18	12	10	10	10
<b>World Total</b>	3,882	2,588	1,226	868	1,704	1,793

**Regional Rye Imports, Production, Consumption, and Stocks**  
**Thousand Metric Tons**

	2004/05	2005/06	2006/07	2007/08	Jul 2008/09	Aug 2008/09
<b>TY Imports</b>						
North America	174	130	136	175	125	125
South America	0	0	0	0	0	0
European Union	6	2	36	100	50	50
Other Europe	17	14	28	10	25	25
Former Soviet Union - 12	187	71	55	25	0	0
Middle East	172	104	89	40	105	105
Sub-Saharan Africa	0	0	0	0	0	0
East Asia	269	286	266	105	255	255
Oceania	0	0	0	0	0	0
<b>Total</b>	<b>825</b>	<b>607</b>	<b>610</b>	<b>455</b>	<b>560</b>	<b>560</b>
<b>Production</b>						
North America	608	521	566	431	443	473
South America	94	64	61	61	61	61
European Union	10,031	7,688	6,541	7,639	9,116	9,175
Other Europe	106	106	101	108	108	108
Former Soviet Union - 12	5,900	5,850	4,850	5,800	6,000	6,550
Middle East	240	240	240	240	240	240
Sub-Saharan Africa	3	3	3	3	3	3
East Asia	0	0	0	0	0	0
Oceania	20	20	20	20	20	20
<b>Total</b>	<b>17,002</b>	<b>14,492</b>	<b>12,382</b>	<b>14,302</b>	<b>15,991</b>	<b>16,630</b>
<b>Domestic Consumption</b>						
North America	555	519	524	515	573	573
South America	94	64	61	61	61	61
European Union	10,135	8,620	7,241	7,875	8,300	8,300
Other Europe	124	123	122	118	133	133
Former Soviet Union - 12	5,985	5,815	5,075	5,625	5,500	6,025
Middle East	410	349	346	280	345	345
Sub-Saharan Africa	3	3	3	3	3	3
East Asia	269	286	266	105	255	255
Oceania	20	20	20	20	20	20
<b>Total</b>	<b>17,595</b>	<b>15,799</b>	<b>13,658</b>	<b>14,602</b>	<b>15,190</b>	<b>15,715</b>
<b>Ending Stocks</b>						
North America	128	137	119	32	27	57
South America	0	0	0	0	0	0
European Union	3,156	1,874	775	564	1,130	1,189
Other Europe	1	0	0	0	0	0
Former Soviet Union - 12	577	557	312	252	527	527
Middle East	0	0	0	0	0	0
Sub-Saharan Africa	0	0	0	0	0	0
East Asia	20	20	20	20	20	20
Oceania	0	0	0	0	0	0
<b>Total</b>	<b>3,882</b>	<b>2,588</b>	<b>1,226</b>	<b>868</b>	<b>1,704</b>	<b>1,793</b>

NOTES: Regional definitions appear on last page of this circular. Imports are reported on a trade year basis. All other data are reported using local marketing years.



# HISTORICAL DATA SERIES FOR SELECTED REGIONS AND COUNTRIES

---

## CONTENTS

European Union: Grain Supply and Demand .....	41
China: Grain Supply and Demand .....	42
Other Europe: Grain Supply and Demand .....	43
Former Soviet Union: Grain Supply and Demand.....	44
Wheat Supply and Disappearance: Selected Exporters .....	48
Corn Supply and Disappearance: Selected Exporters.....	50
Barley Supply and Disappearance: Selected Exporters .....	52
Sorghum Supply and Disappearance: Selected Exporters .....	53
U.S. Grains: Supply and Distribution .....	54
Total Wheat and Coarse Grains: Supply and Demand .....	55
World Wheat and Coarse Grains: Supply and Demand .....	56
World Corn and Barley: Supply and Demand .....	57
World Rice: Supply and Demand .....	58



**European Union: Grain Supply and Demand**  
**Wheat and Coarse Grains Millions of Metric Tons/Hectares**

	Area Harvested	Yield	Production	Imports	Exports	Feed Dom. Consumpti	Domestic Consumpti	Ending Stocks
<b>Wheat</b>								
1999/00	24.6	5.0	122.4	4.0	20.4	52.8	113.2	16.3
2000/01	26.5	5.0	131.7	3.5	15.7	56.3	118.4	17.5
2001/02	25.9	4.8	123.4	8.7	12.8	56.5	118.5	18.3
2002/03	26.4	5.0	132.6	10.7	18.1	60.0	125.0	18.5
2003/04	24.3	4.5	110.6	7.4	9.8	52.4	115.1	11.5
2004/05	26.0	5.7	146.9	7.1	14.7	59.2	123.2	27.5
2005/06	25.8	5.1	132.4	6.8	15.7	63.0	127.5	23.4
2006/07	24.5	5.1	124.8	5.1	13.9	60.2	125.5	14.0
2007/08	24.7	4.8	119.3	6.5	11.0	53.2	118.5	10.3
2008/09	26.6	5.4	143.2	5.0	15.5	65.0	131.0	12.0
<b>Coarse Grains</b>								
1999/00	33.6	4.4	147.9	2.9	13.4	105.8	140.1	22.9
2000/01	33.0	4.2	139.9	4.1	9.3	105.1	139.3	18.3
2001/02	33.6	4.5	150.2	3.9	6.7	107.8	143.6	22.3
2002/03	32.7	4.5	148.3	4.4	7.6	109.3	144.9	22.5
2003/04	32.7	4.0	131.7	8.2	4.2	109.6	145.2	13.0
2004/05	33.5	5.0	166.6	3.0	4.9	116.5	152.6	25.1
2005/06	32.6	4.5	146.3	2.8	4.4	109.4	147.5	22.3
2006/07	31.8	4.3	137.4	8.0	4.7	110.2	147.7	15.3
2007/08	32.0	4.3	136.3	18.9	4.7	115.1	152.3	13.5
2008/09	33.0	4.7	154.1	5.7	5.2	110.7	149.8	18.3
<b>Wheat and Coarse Grains</b>								
1999/00	58.2	4.6	270.4	6.8	33.8	158.6	253.4	39.2
2000/01	59.5	4.6	271.6	7.6	24.9	161.5	257.7	35.8
2001/02	59.5	4.6	273.6	12.7	19.4	164.3	262.0	40.6
2002/03	59.2	4.7	280.9	15.0	25.7	169.3	269.9	41.0
2003/04	57.0	4.3	242.3	15.6	14.0	162.1	260.3	24.5
2004/05	59.5	5.3	313.5	10.1	19.6	175.7	275.8	52.6
2005/06	58.4	4.8	278.6	9.5	20.0	172.4	275.1	45.7
2006/07	56.3	4.7	262.3	13.1	18.6	170.4	273.2	29.3
2007/08	56.7	4.5	255.6	25.4	15.7	168.3	270.7	23.8
2008/09	59.6	5.0	297.2	10.7	20.7	175.7	280.8	30.3

**China: Grain Supply and Demand**

**Wheat and Coarse Grains Millions of Metric Tons/Hectares**

	<b>Area Harvested</b>	<b>Yield</b>	<b>Production</b>	<b>Imports</b>	<b>Exports</b>	<b>Feed Dom. Consumpti</b>	<b>Domestic Consumpti</b>	<b>Ending Stocks</b>
<b>Wheat</b>								
1997/98	30.1	4.1	123.3	1.9	1.2	4.9	109.1	96.2
1998/99	29.8	3.7	109.7	0.8	0.5	5.0	108.3	97.9
1999/00	28.9	3.9	113.9	1.0	0.5	6.5	109.3	102.9
2000/01	26.7	3.7	99.6	0.2	0.6	10.0	110.3	91.9
2001/02	24.6	3.8	93.9	1.1	1.5	9.0	108.7	76.6
2002/03	23.9	3.8	90.3	0.4	1.7	6.5	105.2	60.4
2003/04	22.0	3.9	86.5	3.7	2.8	6.0	104.5	43.3
2004/05	21.6	4.3	92.0	6.7	1.2	4.0	102.0	38.8
2005/06	22.8	4.3	97.5	1.0	1.4	3.5	101.5	34.4
2006/07	23.0	4.7	108.5	0.4	2.8	4.0	102.0	38.5
2007/08	23.1	4.8	109.9	0.2	2.8	6.0	104.0	41.7
2008/09	23.4	4.9	114.0	0.0	2.0	9.0	107.0	46.7
<b>Coarse Grains</b>								
1997/98	28.1	4.1	114.7	1.6	6.2	87.2	121.6	108.0
1998/99	29.1	4.9	143.5	2.6	3.4	91.4	127.3	123.4
1999/00	29.6	4.6	137.2	2.3	10.0	92.7	128.8	124.2
2000/01	26.5	4.3	114.0	2.4	7.3	94.4	130.4	102.8
2001/02	27.5	4.4	122.2	2.0	8.6	96.2	132.9	85.6
2002/03	28.0	4.7	130.7	1.8	15.3	98.4	136.4	66.4
2003/04	27.1	4.6	124.0	1.5	7.7	99.1	138.7	45.5
2004/05	28.2	4.9	138.3	2.1	7.6	100.2	141.2	37.0
2005/06	29.1	5.1	147.7	2.3	3.8	103.1	147.5	35.8
2006/07	30.8	5.2	159.1	1.2	5.4	105.4	153.7	37.0
2007/08	30.9	5.1	159.0	1.3	1.0	106.0	157.1	39.2
2008/09	30.7	5.2	160.5	1.4	0.7	113.2	165.5	34.9
<b>Wheat and Coarse Grains</b>								
1997/98	58.1	4.1	238.0	3.5	7.4	92.1	230.6	204.2
1998/99	58.8	4.3	253.2	3.4	3.9	96.4	235.6	221.3
1999/00	58.4	4.3	251.1	3.4	10.5	99.2	238.1	227.1
2000/01	53.1	4.0	213.6	2.6	7.9	104.4	240.7	194.7
2001/02	52.1	4.1	216.1	3.1	10.1	105.2	241.6	162.1
2002/03	51.9	4.3	221.0	2.2	17.1	104.9	241.6	126.7
2003/04	49.1	4.3	210.4	5.3	10.5	105.1	243.2	88.8
2004/05	49.8	4.6	230.2	8.8	8.8	104.2	243.2	75.8
2005/06	51.9	4.7	245.1	3.3	5.2	106.6	249.0	70.2
2006/07	53.7	5.0	267.6	1.5	8.2	109.4	255.7	75.4
2007/08	54.0	5.0	268.9	1.5	3.8	112.0	261.1	80.9
2008/09	54.1	5.1	274.5	1.5	2.7	122.2	272.5	81.7

**Other Europe: Grain Supply and Demand**  
**Wheat and Coarse Grains Millions of Metric Tons/Hectares**

	Area Harvested	Yield	Production	Imports	Exports	Feed Dom. Consumpti	Domestic Consumpti	Ending Stocks
<b>Wheat</b>								
1997/98	1.5	3.7	5.6	1.3	0.0	0.5	6.6	1.1
1998/99	1.6	3.9	6.0	1.0	0.1	0.6	6.6	1.5
1999/00	1.3	3.3	4.2	1.5	0.1	0.7	5.7	1.3
2000/01	1.4	3.3	4.6	1.2	0.3	0.7	5.5	1.4
2001/02	1.4	3.4	4.9	1.8	0.6	0.9	5.9	1.5
2002/03	1.4	3.5	4.9	1.4	0.6	0.9	5.7	1.4
2003/04	1.2	3.1	3.9	1.5	0.1	0.7	5.5	1.2
2004/05	1.4	4.0	5.4	1.5	0.3	1.0	6.0	1.8
2005/06	1.1	3.6	4.2	1.5	0.2	0.9	5.9	1.3
2006/07	1.2	3.6	4.3	1.5	0.6	0.7	5.5	1.1
2007/08	1.2	3.7	4.4	1.6	0.7	0.8	5.5	0.9
2008/09	1.1	4.1	4.6	1.6	0.6	0.8	5.6	0.9
<b>Coarse Grains</b>								
1997/98	2.8	4.3	12.1	0.5	0.3	10.7	12.0	1.2
1998/99	2.8	3.9	11.2	0.4	0.3	10.2	11.6	0.9
1999/00	2.8	4.4	12.2	0.6	0.3	11.2	12.5	0.9
2000/01	2.6	3.1	8.1	1.0	0.0	7.7	9.0	1.0
2001/02	2.7	4.1	10.9	0.8	0.2	9.8	11.1	1.4
2002/03	2.7	4.4	11.7	0.6	0.6	9.9	11.4	1.8
2003/04	2.7	3.5	9.2	0.8	0.1	9.5	10.8	1.1
2004/05	2.7	4.8	12.8	0.5	0.6	10.8	12.1	1.6
2005/06	2.7	4.8	12.7	0.7	1.4	10.7	12.1	1.5
2006/07	2.5	4.7	11.7	0.9	0.9	10.4	11.7	1.5
2007/08	2.6	3.6	9.5	1.0	0.2	9.6	10.9	1.0
2008/09	2.7	4.6	12.7	0.9	1.1	10.4	11.7	1.7
<b>Wheat and Coarse Grains</b>								
1997/98	4.3	4.1	17.6	1.9	0.3	11.2	18.6	2.4
1998/99	4.4	3.9	17.2	1.4	0.4	10.8	18.2	2.4
1999/00	4.0	4.1	16.4	2.1	0.3	11.9	18.2	2.3
2000/01	4.0	3.2	12.7	2.2	0.3	8.4	14.5	2.3
2001/02	4.1	3.9	15.8	2.6	0.8	10.7	17.0	2.9
2002/03	4.1	4.1	16.6	2.0	1.2	10.8	17.0	3.2
2003/04	3.9	3.4	13.1	2.3	0.2	10.2	16.3	2.2
2004/05	4.0	4.5	18.2	2.0	0.9	11.7	18.2	3.4
2005/06	3.8	4.5	16.9	2.1	1.6	11.6	18.0	2.8
2006/07	3.7	4.3	16.1	2.4	1.5	11.1	17.1	2.6
2007/08	3.8	3.7	13.9	2.7	0.9	10.4	16.4	1.9
2008/09	3.9	4.5	17.2	2.5	1.7	11.2	17.3	2.6

**Former Soviet Union: Grain Supply and Demand**  
**Wheat and Coarse Grains Millions of Metric Tons/Hectares**

	<b>Area Harvested</b>	<b>Yield</b>	<b>Production</b>	<b>Imports</b>	<b>Exports</b>	<b>Feed Dom. Consumpti</b>	<b>Domestic Consumpti</b>	<b>Ending Stocks</b>
<b>Wheat</b>								
2002/03	48.4	2.0	96.1	4.6	25.7	24.8	75.0	16.1
2003/04	40.3	1.5	59.9	7.2	7.9	17.6	65.4	9.9
2004/05	46.5	1.8	85.6	4.8	15.5	21.1	72.2	12.6
2005/06	48.5	1.9	90.9	5.1	21.1	23.5	74.8	12.7
2006/07	45.9	1.8	85.0	5.9	22.4	21.6	72.6	8.6
2007/08	47.5	2.0	92.7	5.6	21.7	24.0	76.0	9.2
2008/09	50.3	2.1	106.0	5.5	28.3	25.3	78.6	13.8
<b>Coarse Grains</b>								
2002/03	31.4	1.9	60.8	0.7	8.1	35.0	52.8	11.9
2003/04	31.2	1.8	55.4	1.5	6.1	39.4	56.8	5.9
2004/05	31.2	2.0	63.0	1.1	8.1	37.9	54.7	7.3
2005/06	28.4	1.9	55.3	1.1	8.5	33.5	49.7	5.5
2006/07	29.8	2.0	58.7	0.9	8.5	35.5	51.4	5.3
2007/08	29.4	1.8	53.9	0.9	5.3	35.1	50.9	3.9
2008/09	30.0	2.3	67.8	0.7	12.0	38.4	54.9	5.4

**Former Soviet Union: Grain Supply and Demand (Wheat)**  
Millions of Tons/Hectares

Country Mktg Year	Area Harvested	Yield	Production	MY Imports	MY Exports	Feed Consumpti	Total Consumpti	Ending Stocks
<b>Former Soviet Union - 12</b>								
<b>Kazakhstan, Republic of</b>								
2005/06	11.8	0.9	11.0	0.0	3.8	2.7	7.4	3.0
2006/07	12.4	1.1	13.5	0.0	8.0	2.7	7.5	1.0
2007/08	12.8	1.3	16.6	0.0	8.5	2.7	7.5	1.7
2008/09	13.0	1.0	13.5	0.0	6.0	2.7	7.5	1.7
<b>Russian Federation</b>								
2005/06	25.4	1.9	47.7	1.3	10.7	14.9	38.4	3.8
2006/07	23.7	1.9	44.9	0.9	10.8	14.1	36.4	2.4
2007/08	24.5	2.0	49.4	1.0	12.0	15.4	38.2	2.6
2008/09	26.1	2.2	57.0	0.5	13.5	16.5	40.0	6.6
<b>Ukraine</b>								
2005/06	6.6	2.8	18.7	0.1	6.5	2.9	12.5	2.4
2006/07	5.5	2.5	14.0	0.1	3.4	2.1	11.7	1.4
2007/08	6.0	2.3	13.9	0.4	1.1	3.1	12.9	1.7
2008/09	6.7	3.3	22.0	0.1	8.5	3.2	13.2	2.1
<b>Uzbekistan, Republic of</b>								
2005/06	1.5	4.0	5.8	0.6	0.1	1.1	6.1	1.0
2006/07	1.3	4.5	5.9	1.1	0.1	1.1	6.5	1.3
2007/08	1.3	4.8	6.2	0.7	0.1	1.2	6.8	1.3
2008/09	1.3	4.6	6.0	1.0	0.1	1.2	6.8	1.4
<b>Other Former Soviet Union - 12</b>								
2005/06	3.3	2.3	7.7	3.1	0.1	1.9	10.4	2.5
2006/07	3.0	2.2	6.7	3.9	0.1	1.6	10.5	2.5
2007/08	3.0	2.2	6.6	3.6	0.0	1.6	10.6	2.0
2008/09	3.2	2.3	7.5	3.9	0.2	1.7	11.1	2.0
<b>Total Former Soviet Union - 12</b>								
2005/06	48.5	1.9	90.9	5.1	21.1	23.5	74.8	12.7
2006/07	45.9	1.8	85.0	5.9	22.4	21.6	72.6	8.6
2007/08	47.5	2.0	92.7	5.6	21.7	24.0	76.0	9.2
2008/09	50.3	2.1	106.0	5.5	28.3	25.3	78.6	13.8

**Former Soviet Union: Grain Supply and Demand (Barley)**  
Millions of Tons/Hectares

Country Mktg Year	Area Harvested	Yield	Production	MY Imports	MY Exports	Feed Consumpti	Total Consumpti	Ending Stocks
<b>Former Soviet Union - 12</b>								
<b>Kazakhstan, Republic of</b>								
2005/06	1.6	0.9	1.5	0.0	0.1	1.3	1.4	0.2
2006/07	1.8	1.1	1.9	0.1	0.6	1.3	1.4	0.2
2007/08	1.8	1.4	2.5	0.1	1.2	1.3	1.4	0.2
2008/09	1.8	1.1	2.0	0.0	0.8	1.2	1.3	0.1
<b>Russian Federation</b>								
2005/06	9.2	1.7	15.8	0.2	1.7	10.9	15.5	0.9
2006/07	10.0	1.8	18.1	0.2	1.5	11.8	16.4	1.2
2007/08	9.8	1.6	15.7	0.2	1.1	10.7	15.3	0.7
2008/09	9.6	1.9	18.0	0.2	2.1	11.3	15.9	0.9
<b>Ukraine</b>								
2005/06	4.4	2.1	9.0	0.1	4.0	3.2	4.9	1.2
2006/07	5.2	2.2	11.4	0.0	5.1	4.8	6.5	1.0
2007/08	4.1	1.5	6.0	0.1	0.7	3.9	5.6	0.7
2008/09	4.1	2.9	12.0	0.0	5.0	4.6	6.3	1.4
<b>Uzbekistan, Republic of</b>								
2005/06	0.1	3.2	0.2	0.0	0.0	0.2	0.2	0.0
2006/07	0.1	3.2	0.2	0.0	0.0	0.2	0.2	0.0
2007/08	0.1	3.2	0.2	0.0	0.0	0.2	0.3	0.0
2008/09	0.1	3.2	0.2	0.0	0.0	0.2	0.3	0.0
<b>Other Former Soviet Union - 12</b>								
2005/06	1.2	2.5	2.9	0.1	0.0	2.1	3.1	0.8
2006/07	1.1	2.1	2.4	0.1	0.0	1.7	2.7	0.5
2007/08	1.3	2.1	2.7	0.1	0.0	1.8	2.8	0.4
2008/09	1.2	2.3	2.7	0.2	0.0	1.9	3.0	0.4
<b>Total Former Soviet Union - 12</b>								
2005/06	16.3	1.8	29.5	0.4	5.8	17.7	25.2	3.1
2006/07	18.2	1.9	34.0	0.4	7.3	19.7	27.2	3.0
2007/08	17.0	1.6	27.1	0.4	3.0	17.9	25.4	2.1
2008/09	16.7	2.1	34.9	0.4	7.9	19.2	26.7	2.9

**Former Soviet Union: Grain Supply and Demand (Corn)**  
**Millions of Tons/Hectares**

Country Mktg Year	Area Harvested	Yield	Production	MY Imports	MY Exports	Feed Consumpti	Total Consumpti	Ending Stocks
<b>Former Soviet Union - 12</b>								
<b>Kazakhstan, Republic of</b>								
2005/06	0.1	3.0	0.3	0.0	0.0	0.2	0.3	0.0
2006/07	0.1	3.2	0.3	0.0	0.0	0.2	0.3	0.0
2007/08	0.1	3.1	0.3	0.0	0.0	0.2	0.3	0.0
2008/09	0.1	3.1	0.3	0.0	0.0	0.2	0.3	0.0
<b>Russian Federation</b>								
2005/06	0.9	3.8	3.2	0.3	0.1	3.0	3.6	0.1
2006/07	1.0	3.6	3.6	0.1	0.1	3.1	3.6	0.2
2007/08	1.3	3.0	4.0	0.3	0.1	3.6	4.2	0.2
2008/09	1.6	3.6	5.8	0.2	0.2	4.6	5.2	0.8
<b>Ukraine</b>								
2005/06	1.7	4.3	7.2	0.0	2.5	4.4	5.1	0.9
2006/07	1.7	3.8	6.4	0.0	1.0	4.5	5.3	1.1
2007/08	1.9	3.9	7.4	0.0	2.0	5.0	5.7	0.8
2008/09	2.3	4.1	9.5	0.0	3.5	5.5	6.2	0.6
<b>Uzbekistan, Republic of</b>								
2005/06	0.0	4.6	0.2	0.0	0.0	0.2	0.2	0.0
2006/07	0.0	4.6	0.2	0.0	0.0	0.2	0.2	0.0
2007/08	0.0	4.6	0.2	0.0	0.0	0.1	0.2	0.0
2008/09	0.0	4.6	0.2	0.0	0.0	0.1	0.2	0.0
<b>Other Former Soviet Union - 12</b>								
2005/06	0.8	3.1	2.5	0.4	0.0	2.5	2.8	0.6
2006/07	0.7	3.4	2.4	0.4	0.0	2.6	2.8	0.5
2007/08	0.8	2.6	2.0	0.2	0.0	2.1	2.4	0.3
2008/09	0.9	3.6	3.2	0.1	0.2	2.6	2.9	0.4
<b>Total Former Soviet Union - 12</b>								
2005/06	3.4	3.9	13.3	0.7	2.6	10.2	11.9	1.7
2006/07	3.5	3.6	12.8	0.5	1.1	10.5	12.1	1.8
2007/08	4.1	3.4	13.8	0.5	2.1	11.0	12.7	1.3
2008/09	4.9	3.8	18.9	0.2	3.9	13.0	14.8	1.8

**Wheat Supply and Disappearance: Selected Exporters**  
**Million Metric Tons/Hectares**

<b>Country Mktg Year</b>	<b>Area Harvested</b>	<b>Yield</b>	<b>Production</b>	<b>MY Imports</b>	<b>MY Exports</b>	<b>Feed Consumpti</b>	<b>Total Consumpti</b>	<b>Ending Stocks</b>
<b>Wheat Competitors</b>								
<b>Argentina</b>								
2000/01	6.4	2.5	16.2	0.0	11.3	0.1	5.0	0.6
2001/02	6.8	2.3	15.5	0.0	10.1	0.1	4.9	1.1
2002/03	5.9	2.1	12.3	0.0	6.8	0.1	5.2	1.5
2003/04	5.7	2.5	14.5	0.0	9.4	0.1	5.2	1.4
2004/05	6.1	2.6	16.0	0.0	11.8	0.1	5.0	0.6
2005/06	5.0	2.9	14.5	0.0	9.6	0.1	5.0	0.5
2006/07	5.3	2.9	15.2	0.0	10.5	0.1	4.9	0.3
2007/08	5.7	2.8	16.0	0.0	10.0	0.1	5.4	0.9
2008/09	4.7	2.9	13.5	0.0	8.5	0.1	5.5	0.4
<b>Australia</b>								
2000/01	12.1	1.8	22.1	0.1	15.9	2.6	5.3	5.5
2001/02	11.6	2.1	24.3	0.1	16.4	2.7	5.4	8.0
2002/03	11.1	0.9	10.1	0.3	9.1	3.4	6.1	3.2
2003/04	13.1	2.0	26.1	0.1	18.0	3.2	5.9	5.4
2004/05	13.4	1.6	21.9	0.1	14.7	3.2	5.9	6.8
2005/06	12.5	2.0	25.2	0.1	16.0	3.7	6.4	9.6
2006/07	11.8	0.9	10.8	0.1	8.7	4.7	7.4	4.4
2007/08	12.3	1.1	13.0	0.1	7.5	3.5	6.2	3.9
2008/09	14.0	1.8	25.0	0.1	15.0	3.5	6.2	7.7
<b>Canada</b>								
2000/01	11.0	2.4	26.5	0.2	17.3	3.0	7.0	9.7
2001/02	10.6	1.9	20.6	0.3	16.3	3.6	7.7	6.5
2002/03	8.8	1.8	16.2	0.4	9.4	3.8	8.0	5.7
2003/04	10.2	2.3	23.0	0.2	15.8	3.1	7.2	6.0
2004/05	9.4	2.6	24.8	0.3	14.9	4.1	8.2	7.9
2005/06	9.4	2.7	25.7	0.3	16.0	4.2	8.3	9.6
2006/07	9.7	2.6	25.3	0.3	19.6	4.3	8.7	6.8
2007/08	8.6	2.3	20.1	0.4	16.5	3.0	7.0	3.7
2008/09	10.0	2.5	25.0	0.3	17.0	3.0	7.7	4.3
<b>Total Wheat Competitors</b>								
2000/01	29.5	2.2	64.9	0.3	44.5	5.7	17.4	15.8
2001/02	29.0	2.1	60.4	0.4	42.8	6.4	18.1	15.7
2002/03	25.8	1.5	38.6	0.7	25.3	7.3	19.3	10.5
2003/04	29.0	2.2	63.7	0.3	43.3	6.4	18.3	12.8



**Wheat Supply and Disappearance: Selected Exporters (Continued)**  
**Million Metric Tons/Hectares**

<b>Country Mktg Year</b>	<b>Area Harvested</b>	<b>Yield</b>	<b>Production</b>	<b>MY Imports</b>	<b>MY Exports</b>	<b>Feed Consumpti</b>	<b>Total Consumpti</b>	<b>Ending Stocks</b>
2004/05	28.9	2.2	62.7	0.3	41.5	7.3	19.1	15.3
2005/06	26.9	2.4	65.4	0.4	41.6	8.0	19.7	19.8
2006/07	26.8	1.9	51.3	0.4	38.9	9.1	21.0	11.6
2007/08	26.7	1.8	49.1	0.5	34.0	6.6	18.6	8.5
2008/09	28.7	2.2	63.5	0.4	40.5	6.6	19.4	12.5
<b>India</b>								
2000/01	27.5	2.8	76.4	0.4	1.6	0.5	66.8	21.5
2001/02	25.7	2.7	69.7	0.0	3.1	0.5	65.1	23.0
2002/03	25.9	2.8	71.8	0.0	4.9	0.6	74.3	15.7
2003/04	24.9	2.6	65.1	0.0	5.7	0.6	68.3	6.9
2004/05	26.6	2.7	72.2	0.0	2.1	0.5	72.8	4.1
2005/06	26.5	2.6	68.6	0.0	0.8	0.3	70.0	2.0
2006/07	26.4	2.6	69.4	6.7	0.2	0.3	73.4	4.5
2007/08	28.0	2.7	75.8	2.0	0.1	0.2	75.9	6.4
2008/09	28.0	2.8	78.4	0.0	0.1	0.1	77.6	7.2
<b>Turkey</b>								
2000/01	8.7	2.1	18.0	0.5	1.6	1.0	16.7	1.7
2001/02	8.5	1.8	15.5	1.0	0.8	1.1	16.5	1.0
2002/03	8.6	2.0	16.8	1.2	0.8	1.0	16.8	1.5
2003/04	8.6	2.0	16.8	1.1	0.8	1.0	16.8	1.7
2004/05	8.6	2.2	18.5	0.4	2.0	1.0	16.8	1.8
2005/06	8.6	2.2	18.5	0.1	3.2	0.4	16.1	1.1
2006/07	8.6	2.0	17.5	1.8	2.0	0.8	16.7	1.7
2007/08	8.6	1.8	15.5	1.5	1.3	0.8	16.8	0.6
2008/09	8.6	1.9	16.5	1.5	1.0	0.7	16.9	0.7

**Corn Supply and Disappearance: Selected Exporters**  
**Million Metric Tons/Hectares**

<b>Country Mktg Year</b>	<b>Area Harvested</b>	<b>Yield</b>	<b>Production</b>	<b>MY Imports</b>	<b>MY Exports</b>	<b>Feed Consumpti</b>	<b>Total Consumpti</b>	<b>Ending Stocks</b>
<b>Argentina</b>								
2000/01	2.8	5.5	15.4	0.0	9.7	3.9	5.6	0.6
2001/02	2.5	6.0	14.7	0.0	10.9	2.7	4.2	0.3
2002/03	2.5	6.3	15.5	0.0	11.2	2.5	4.1	0.5
2003/04	2.3	6.5	15.0	0.0	10.9	2.8	4.4	0.2
2004/05	2.8	7.4	20.5	0.0	14.6	3.5	5.2	1.0
2005/06	2.4	6.5	15.8	0.1	9.5	4.4	6.2	1.2
2006/07	2.8	8.0	22.5	0.0	15.3	4.8	6.7	1.7
2007/08	3.1	6.8	21.0	0.0	15.5	4.6	6.5	0.7
2008/09	3.0	7.3	22.0	0.0	15.0	4.8	6.7	1.0
<b>China, Peoples Republic of</b>								
2000/01	23.1	4.6	106.0	0.1	7.3	92.0	120.2	102.4
2001/02	24.3	4.7	114.1	0.0	8.6	94.0	123.1	84.8
2002/03	24.6	4.9	121.3	0.0	15.2	96.0	125.9	65.0
2003/04	24.1	4.8	115.8	0.0	7.6	97.0	128.4	44.9
2004/05	25.4	5.1	130.3	0.0	7.6	98.0	131.0	36.6
2005/06	26.4	5.3	139.4	0.1	3.7	101.0	137.0	35.3
2006/07	27.9	5.4	151.6	0.0	5.3	104.0	145.0	36.6
2007/08	28.0	5.4	151.8	0.1	0.6	105.0	149.0	38.9
2008/09	27.8	5.5	153.0	0.1	0.5	112.0	157.0	34.5
<b>South Africa, Republic of</b>								
2000/01	3.2	2.5	8.0	0.4	1.3	4.1	8.7	0.5
2001/02	3.5	2.8	10.1	0.9	1.1	3.9	8.4	1.9
2002/03	3.7	2.7	9.7	0.4	1.1	4.0	8.5	2.4
2003/04	3.3	2.9	9.7	0.2	0.7	4.1	8.7	3.0
2004/05	3.2	3.6	11.7	0.4	2.1	5.0	9.7	3.2
2005/06	2.0	3.4	6.9	0.9	0.5	4.0	8.2	2.3
2006/07	2.9	2.5	7.3	1.1	0.5	4.4	8.6	1.7
2007/08	3.2	3.8	12.0	0.2	1.5	4.7	9.1	3.3
2008/09	3.4	3.4	11.5	0.2	2.5	4.5	9.0	3.5
<b>Brazil</b>								
2000/01	13.0	3.2	41.5	0.2	6.3	29.5	34.5	2.7
2001/02	11.8	3.0	35.5	0.4	2.1	29.5	35.0	1.5
2002/03	13.0	3.4	44.5	0.7	4.6	30.0	35.8	6.3
2003/04	12.4	3.4	42.0	0.4	4.4	30.5	36.3	7.9
2004/05	11.6	3.0	35.0	0.5	0.7	32.1	38.5	4.2
2005/06	12.9	3.2	41.7	1.1	4.5	33.0	39.5	3.0

**Corn Supply and Disappearance: Selected Exporters (Continued)**  
**Million Metric Tons/Hectares**

<b>Country Mktg Year</b>	<b>Area Harvested</b>	<b>Yield</b>	<b>Production</b>	<b>MY Imports</b>	<b>MY Exports</b>	<b>Feed Consumpti</b>	<b>Total Consumpti</b>	<b>Ending Stocks</b>
2006/07	14.0	3.6	51.0	1.4	10.8	34.5	41.0	3.6
2007/08	14.7	3.9	57.5	0.8	9.0	36.0	42.5	10.3
2008/09	15.0	3.8	57.0	0.5	9.0	38.0	45.0	13.8
<b>Total Corn Competitors</b>								
2000/01	42.1	4.1	171.0	0.8	24.5	129.5	169.0	106.2
2001/02	42.1	4.1	174.3	1.3	22.6	130.1	170.7	88.6
2002/03	43.7	4.4	191.0	1.2	32.2	132.5	174.3	74.2
2003/04	42.1	4.3	182.5	0.6	23.7	134.4	177.8	55.9
2004/05	43.0	4.6	197.5	0.9	25.0	138.6	184.4	44.9
2005/06	43.7	4.7	203.8	2.2	18.3	142.4	190.9	41.7
2006/07	47.6	4.9	232.4	2.5	31.9	147.7	201.3	43.5
2007/08	49.0	4.9	242.3	1.0	26.6	150.3	207.1	53.1
2008/09	49.2	4.9	243.5	0.8	27.0	159.3	217.7	52.7

**Barley Supply and Disappearance: Selected Exporters**  
**Million Metric Tons/Hectares**

<b>Country Mktg Year</b>	<b>Area Harvested</b>	<b>Yield</b>	<b>Production</b>	<b>MY Imports</b>	<b>MY Exports</b>	<b>Feed Consumpti</b>	<b>Total Consumpti</b>	<b>Ending Stocks</b>
<b>Australia</b>								
2000/01	3.5	2.0	6.7	0.0	4.0	1.3	2.2	1.0
2001/02	3.7	2.2	8.3	0.0	4.7	1.8	2.8	1.8
2002/03	3.9	1.0	3.9	0.0	2.0	1.8	2.7	0.9
2003/04	4.5	2.3	10.4	0.0	6.4	2.2	3.1	1.9
2004/05	4.6	1.7	7.7	0.0	4.3	2.5	3.5	1.9
2005/06	4.4	2.2	9.5	0.0	5.3	2.5	3.5	2.7
2006/07	4.2	1.0	4.3	0.0	1.9	2.9	3.8	1.3
2007/08	4.4	1.3	5.9	0.0	3.0	2.7	3.7	0.6
2008/09	4.5	1.9	8.5	0.0	4.0	2.9	3.9	1.2
<b>Canada</b>								
2000/01	4.6	2.9	13.2	0.0	2.0	10.1	11.6	2.5
2001/02	4.2	2.6	10.8	0.1	1.1	8.9	10.3	2.0
2002/03	3.3	2.2	7.5	0.2	0.4	6.5	7.9	1.5
2003/04	4.4	2.8	12.2	0.0	1.8	8.4	9.7	2.1
2004/05	3.8	3.3	12.6	0.1	1.2	8.8	10.1	3.4
2005/06	3.6	3.2	11.7	0.0	2.3	8.4	9.6	3.3
2006/07	3.2	3.0	9.6	0.0	1.2	8.9	10.2	1.5
2007/08	4.0	2.8	11.0	0.1	3.1	7.1	8.4	1.0
2008/09	3.3	3.2	10.5	0.1	1.6	7.6	9.0	1.0
<b>EU-27</b>								
2000/01	14.1	4.3	59.9	0.4	7.2	41.0	55.8	9.0
2001/02	14.1	4.2	58.8	1.4	4.2	39.7	54.9	10.0
2002/03	14.0	4.2	58.2	1.1	5.2	39.3	55.4	8.7
2003/04	14.1	4.0	55.8	0.7	2.6	41.8	58.0	4.5
2004/05	13.7	4.7	64.1	0.3	3.3	38.6	54.6	11.1
2005/06	13.8	4.0	54.8	0.1	3.3	38.2	54.1	8.5
2006/07	13.8	4.1	56.2	0.2	3.5	40.0	55.9	5.6
2007/08	13.8	4.2	57.8	0.3	4.0	38.5	54.4	5.3
2008/09	14.5	4.3	62.7	0.1	3.5	39.0	55.5	9.1

**Sorghum Supply and Disappearance: Selected Exporters**  
**Million Metric Tons/Hectares**

Country Mktg Year	Area Harvested	Yield	Production	MY Imports	MY Exports	Feed Consumpti	Total Consumpti	Ending Stocks
<b>Argentina</b>								
2000/01	0.6	4.8	2.7	0.0	0.4	2.4	2.5	0.4
2001/02	0.5	5.1	2.8	0.0	0.4	2.2	2.3	0.5
2002/03	0.6	5.1	2.8	0.0	0.6	2.1	2.3	0.4
2003/04	0.5	4.6	2.2	0.0	0.2	1.9	2.0	0.4
2004/05	0.6	5.0	2.9	0.0	0.4	2.4	2.6	0.3
2005/06	0.5	4.7	2.2	0.0	0.2	2.0	2.2	0.1
2006/07	0.6	5.3	3.3	0.0	1.0	2.0	2.2	0.2
2007/08	0.8	4.4	3.5	0.0	1.1	2.3	2.5	0.1
2008/09	0.8	5.2	4.3	0.0	1.4	2.5	2.7	0.4
<b>Australia</b>								
2000/01	0.8	2.6	1.9	0.0	0.6	1.3	1.3	0.1
2001/02	0.8	2.5	2.0	0.0	0.4	1.7	1.7	0.1
2002/03	0.7	2.2	1.5	0.0	0.1	1.4	1.4	0.1
2003/04	0.7	2.7	2.0	0.0	0.6	1.4	1.4	0.1
2004/05	0.8	2.7	2.0	0.0	0.2	1.8	1.8	0.1
2005/06	0.8	2.5	1.9	0.0	0.1	1.9	1.9	0.0
2006/07	0.6	2.1	1.3	0.0	0.0	1.2	1.2	0.0
2007/08	0.8	3.4	2.7	0.0	0.3	2.4	2.4	0.0
2008/09	0.8	2.5	2.0	0.0	0.2	1.8	1.8	0.0

**U.S. Grains Supply and Distribution: Wheat, Corn, Sorghum, Barley, Oats, Rye, and Rice**

Thousand Metric Tons/Hectares

	Area Harvested	Yield	Rough Production	Production	Imports	TY Imports	Exports	TY Exports	Feed Dom. Consumption	Domestic Consumption	Ending Stocks
<b>Wheat</b>											
2006/07	18,943	3	nr	49,316	3,317	3,394	24,725	25,041	3,295	31,039	12,414
2007/08	20,644	3	nr	56,247	3,065	2,900	34,403	34,500	810	29,005	8,318
2008/09	22,900	3	nr	67,016	2,722	2,600	27,216	27,000	6,804	35,217	15,623
<b>Corn</b>											
2006/07	28,590	9	nr	267,598	304	319	53,987	54,214	142,113	230,769	33,114
2007/08	35,022	9	nr	332,092	457	475	61,598	61,000	153,677	264,044	40,021
2008/09	32,088	10	nr	312,126	381	300	50,802	50,000	134,626	272,936	28,790
<b>Sorghum</b>											
2006/07	1,998	4	nr	7,050	2	2	3,876	4,380	2,886	4,030	814
2007/08	2,754	5	nr	12,827	1	0	6,985	6,500	4,445	5,334	1,323
2008/09	2,607	4	nr	10,418	0	0	3,302	3,300	5,080	6,859	1,580
<b>Barley</b>											
2006/07	1,194	3	nr	3,923	264	354	441	528	1,071	4,596	1,500
2007/08	1,420	3	nr	4,612	688	600	902	1,000	747	4,413	1,485
2008/09	1,473	3	nr	4,746	544	550	544	550	1,089	4,572	1,659
<b>Oats</b>											
2006/07	634	2	nr	1,359	1,831	1,794	38	33	2,104	3,181	734
2007/08	609	2	nr	1,330	2,125	1,982	42	50	2,089	3,177	970
2008/09	584	2	nr	1,305	1,810	1,800	44	40	2,028	3,116	925
<b>Rye</b>											
2006/07	111	2	nr	183	150	136	2	2	100	337	12
2007/08	117	2	nr	201	179	175	7	6	140	375	10
2008/09	108	2	nr	183	178	125	3	5	122	358	10
<b>Rice, Milled</b>											
2006/07	1,142	8	8,787	6,239	653	695	2,923	3,029	nr	4,073	1,266
2007/08	1,112	8	8,956	6,314	746	750	3,390	3,500	nr	3,989	947
2008/09	1,165	8	9,294	6,552	762	775	3,518	3,300	nr	4,024	719

Notes: Wheat Trade Year (TY) statistics are on July/June years. Barley, corn, sorghum, rye and oats Trade Year (TY) statistics are on Oct/Sept years. Rice Trade Year (TY) statistics are for the subsequent calendar year; 'Imports' and 'Exports' columns contain data on the local marketing year: wheat, barley, oats and rye are June/May; corn and sorghum are Sept/Aug; rice is Aug/July.

**Total Wheat and Coarse Grains: Supply and Demand**

Millions of Metric Tons/Hectares

	Area Harvested	Yield	Production	TY Exports	Feed Dom. Consumpti	Domestic Consumpti	Ending Stocks
<b>Wheat and Coarse Grains</b>							
1979/80	569.0	2.0	1,153.1	182.6	573.9	1,157.6	273.7
1980/81	577.6	2.0	1,159.3	200.6	562.6	1,179.2	255.2
1981/82	587.8	2.0	1,204.0	196.9	573.5	1,178.3	281.0
1982/83	576.9	2.2	1,248.0	189.6	593.4	1,197.1	332.1
1983/84	563.8	2.1	1,162.5	193.2	588.4	1,216.1	278.5
1984/85	567.0	2.3	1,315.0	203.6	609.9	1,253.5	340.0
1985/86	570.9	2.3	1,328.5	165.2	613.1	1,247.9	420.6
1986/87	565.6	2.4	1,348.0	174.7	644.2	1,299.4	469.2
1987/88	545.0	2.4	1,285.3	202.2	655.1	1,329.7	422.6
1988/89	542.5	2.2	1,218.0	203.3	618.2	1,302.0	338.6
1989/90	549.0	2.4	1,327.4	208.9	642.9	1,346.2	319.9
1990/91	548.9	2.6	1,417.3	190.1	667.3	1,369.2	368.0
1991/92	546.3	2.5	1,355.5	207.5	650.0	1,364.7	358.8
1992/93	548.7	2.6	1,431.3	205.2	662.3	1,389.7	397.6
1993/94	539.2	2.5	1,355.9	188.2	654.1	1,389.0	364.5
1994/95	537.5	2.6	1,392.1	200.1	666.9	1,395.6	360.9
1995/96	533.5	2.5	1,338.0	187.5	636.6	1,380.4	318.5
1996/97	552.9	2.7	1,490.2	198.4	669.6	1,442.9	365.8
1997/98	539.4	2.8	1,491.4	190.3	680.8	1,444.8	412.3
1998/99	534.0	2.8	1,481.6	198.7	679.8	1,448.3	445.6
1999/00	514.6	2.8	1,464.7	214.3	685.0	1,467.8	442.0
2000/01	514.0	2.8	1,445.9	205.1	693.7	1,469.5	418.4
2001/02	516.2	2.9	1,478.2	208.5	709.0	1,494.6	402.0
2002/03	508.3	2.8	1,444.5	209.8	708.1	1,509.2	337.3
2003/04	517.2	2.8	1,470.5	206.2	711.2	1,534.0	273.8
2004/05	517.9	3.2	1,642.3	214.5	749.3	1,586.3	329.8
2005/06	520.5	3.1	1,600.6	222.2	748.0	1,617.8	312.6
2006/07	517.7	3.1	1,585.1	229.9	741.2	1,632.9	264.8
2007/08	534.4	3.2	1,686.5	239.3	754.5	1,688.3	263.0
2008/09	536.9	3.3	1,759.9	236.3	770.4	1,742.9	279.9

Notes: Wheat and coarse grains trade data are on July June years through 1975/76. From 1976/77 to the present, coarse grains data are on an Oct/Sept trade year.

## World Wheat and Coarse Grains: Supply and Demand

Millions of Metric Tons/Hectares

	Area Harvested	Yield	Production	TY Exports	Feed Dom. Consumpti	Domestic Consumpti	Ending Stocks
<b>Wheat</b>							
1986/87	227.9	2.3	524.1	89.7	113.2	511.3	191.3
1987/88	220.1	2.3	498.4	114.1	113.6	530.6	159.1
1988/89	217.9	2.3	495.0	104.3	104.0	519.5	134.7
1989/90	226.5	2.4	533.2	103.9	103.7	531.3	136.6
1990/91	231.6	2.5	588.6	101.3	130.1	554.1	171.2
1991/92	223.4	2.4	543.3	111.4	113.8	551.6	162.9
1992/93	222.7	2.5	562.4	113.2	110.9	548.3	176.7
1993/94	221.8	2.5	558.2	101.7	108.0	552.7	182.2
1994/95	214.4	2.4	522.7	101.5	99.6	541.8	163.1
1995/96	219.1	2.5	537.1	99.2	91.9	544.6	155.6
1996/97	230.3	2.5	581.3	104.0	96.7	573.4	163.5
1997/98	228.5	2.7	610.0	104.5	100.9	577.2	196.3
1998/99	225.4	2.6	590.2	102.0	103.6	578.7	207.8
1999/00	215.7	2.7	586.7	112.0	98.9	585.0	209.5
2000/01	217.9	2.7	582.9	102.3	104.4	585.0	207.5
2001/02	215.2	2.7	583.1	108.0	107.8	587.1	203.4
2002/03	215.2	2.6	568.7	107.1	112.1	605.3	166.8
2003/04	210.2	2.6	553.8	103.6	96.3	588.6	132.1
2004/05	217.6	2.9	625.7	113.2	105.6	606.9	150.9
2005/06	218.8	2.8	620.9	113.9	111.6	624.4	147.4
2006/07	212.3	2.8	596.3	115.6	105.8	616.9	126.7
2007/08	217.5	2.8	610.5	114.4	97.1	622.1	115.2
2008/09	223.9	3.0	670.8	121.3	119.8	649.8	136.2
<b>Coarse Grains</b>							
1986/87	337.7	2.4	823.9	85.0	531.0	788.2	277.9
1987/88	324.9	2.4	786.9	88.1	541.5	799.2	263.5
1988/89	324.6	2.2	722.9	99.0	514.2	782.5	203.9
1989/90	322.5	2.5	794.2	105.0	539.2	814.9	183.3
1990/91	317.3	2.6	828.7	88.9	537.3	815.2	196.8
1991/92	322.9	2.5	812.2	96.2	536.2	813.1	195.9
1992/93	326.0	2.7	868.8	91.9	551.3	841.4	220.9
1993/94	317.4	2.5	797.7	86.5	546.1	836.3	182.3
1994/95	323.1	2.7	869.4	98.6	567.4	853.8	197.9
1995/96	314.4	2.5	800.8	88.2	544.7	835.8	162.9
1996/97	322.6	2.8	908.9	94.4	573.0	869.5	202.3
1997/98	311.0	2.8	881.4	85.8	579.8	867.7	216.0
1998/99	308.6	2.9	891.3	96.7	576.1	869.6	237.8
1999/00	299.0	2.9	878.0	102.4	586.0	882.8	232.5
2000/01	296.1	2.9	863.0	102.7	589.3	884.5	210.9
2001/02	301.0	3.0	895.1	100.5	601.2	907.4	198.6
2002/03	293.0	3.0	875.8	102.7	596.0	903.9	170.5
2003/04	307.0	3.0	916.7	102.6	614.8	945.4	141.7
2004/05	300.3	3.4	1,016.6	101.2	643.7	979.4	178.9
2005/06	301.7	3.2	979.8	108.4	636.4	993.5	165.2
2006/07	305.4	3.2	988.8	114.3	635.4	1,016.0	138.0
2007/08	316.9	3.4	1,076.0	124.9	657.4	1,066.2	147.8
2008/09	312.9	3.5	1,089.1	115.1	650.6	1,093.1	143.8

Notes: Wheat and coarse grains trade data are on July June years through 1975/76. From 1976/77 to the present, coarse grains data are on an Oct/Sept trade year.



## World Corn and Barley: Supply and Demand

Millions of Metric Tons/Hectares

	Area Harvested	Yield	Production	TY Exports	Feed Dom. Consumpti	Domestic Consumpti	Ending Stocks
<b>Corn</b>							
1986/87	131.9	3.6	475.4	56.9	304.6	448.3	204.9
1987/88	127.0	3.5	450.8	58.8	316.5	458.2	197.5
1988/89	126.1	3.2	400.5	66.0	306.8	452.8	145.2
1989/90	127.3	3.6	461.7	74.5	324.8	474.1	132.8
1990/91	129.2	3.7	481.9	58.8	318.5	473.4	141.2
1991/92	132.6	3.7	493.0	63.0	334.4	493.3	140.8
1992/93	133.2	4.0	535.6	62.6	348.7	512.1	162.5
1993/94	130.7	3.6	475.8	57.4	342.1	509.1	129.2
1994/95	135.3	4.1	559.3	71.9	371.5	535.6	152.9
1995/96	135.0	3.8	516.3	64.8	365.1	536.5	132.7
1996/97	141.6	4.2	592.9	66.7	387.6	560.1	165.6
1997/98	136.3	4.2	574.4	63.1	401.1	573.7	166.3
1998/99	139.3	4.4	605.9	68.7	404.6	581.1	191.0
1999/00	139.0	4.4	608.0	72.3	423.0	605.3	193.7
2000/01	137.2	4.3	590.8	75.9	427.9	610.0	174.5
2001/02	137.9	4.4	600.3	72.8	436.3	623.7	151.2
2002/03	137.9	4.4	603.6	76.9	433.2	628.2	126.6
2003/04	142.3	4.4	627.6	79.1	445.2	649.0	105.2
2004/05	145.1	4.9	715.8	76.0	474.5	688.9	132.1
2005/06	145.9	4.8	698.5	82.6	477.4	705.9	124.6
2006/07	149.2	4.8	712.2	91.3	477.6	728.4	108.5
2007/08	158.6	5.0	789.2	97.6	497.4	775.2	122.5
2008/09	158.0	5.0	789.6	88.0	489.8	799.7	112.4
<b>Barley</b>							
1986/87	79.6	2.2	178.1	18.3	132.1	173.8	33.8
1987/88	78.7	2.2	175.4	18.3	129.6	173.5	33.6
1988/89	76.4	2.2	164.4	19.0	121.9	166.3	31.7
1989/90	73.7	2.3	166.1	18.5	126.0	170.4	27.5
1990/91	72.9	2.5	179.5	19.6	130.8	175.5	31.5
1991/92	76.5	2.2	169.8	19.4	120.3	166.5	34.8
1992/93	73.1	2.3	166.2	16.4	119.0	165.6	34.9
1993/94	73.8	2.3	168.9	18.8	123.8	169.1	34.8
1994/95	72.8	2.2	160.7	15.3	120.9	165.6	29.9
1995/96	68.6	2.1	141.2	13.4	107.8	150.7	20.4
1996/97	65.6	2.3	153.1	17.9	106.3	149.5	23.9
1997/98	64.5	2.4	153.9	12.8	104.1	145.9	31.9
1998/99	60.8	2.2	136.0	17.8	99.5	139.4	28.6
1999/00	54.5	2.3	127.4	17.8	94.0	132.5	23.5
2000/01	53.9	2.5	133.1	16.2	94.7	134.4	22.2
2001/02	56.3	2.5	143.3	17.2	95.6	136.7	28.9
2002/03	56.2	2.4	135.0	16.3	95.0	137.1	26.7
2003/04	59.8	2.4	142.5	14.8	102.6	146.7	22.5
2004/05	58.0	2.6	152.7	17.0	99.8	142.4	32.8
2005/06	56.2	2.4	136.8	17.4	96.5	141.1	28.4
2006/07	57.4	2.4	137.4	14.4	100.9	145.2	20.6
2007/08	57.5	2.3	133.3	15.9	93.3	137.8	16.1
2008/09	55.2	2.7	146.8	18.9	96.4	141.9	21.0

Notes: Coarse grains trade data are on July June years through 1975/76. From 1976/77 to the present, coarse grains data are on an Oct/Sept trade year.

**World Rice: Supply and Demand**  
**Millions of Metric Tons/Hectares**

	<b>Area Harvested</b>	<b>Yield</b>	<b>Rough Production</b>	<b>Production TY</b>	<b>Exports</b>	<b>Domestic Consumpti</b>	<b>Ending Stocks</b>
<b>Rice, Milled</b>							
1979/80	141.2	2.7	376.6	256.8	12.0	257.6	54.0
1980/81	144.4	2.7	397.0	269.9	11.9	271.2	52.6
1981/82	144.4	2.8	408.3	277.9	11.3	280.0	50.5
1982/83	140.5	3.0	418.3	285.0	11.2	278.7	56.8
1983/84	144.6	3.1	450.9	306.9	11.9	294.4	69.3
1984/85	144.2	3.2	464.9	316.8	11.0	298.4	87.7
1985/86	144.8	3.2	467.3	318.0	11.8	307.9	97.7
1986/87	144.8	3.3	481.9	316.0	12.9	310.4	103.3
1987/88	141.7	3.3	465.0	315.3	11.4	313.3	105.3
1988/89	146.4	3.4	490.8	332.1	14.0	325.7	111.7
1989/90	147.6	3.5	510.3	345.2	11.7	336.3	120.6
1990/91	146.8	3.5	518.9	351.0	12.3	345.0	126.7
1991/92	147.5	3.5	523.1	353.4	14.4	353.2	126.8
1992/93	146.5	3.6	524.3	354.1	14.9	357.6	123.3
1993/94	145.3	3.6	526.1	354.7	16.6	358.9	119.1
1994/95	147.4	3.7	539.5	363.9	20.8	365.2	117.8
1995/96	148.2	3.7	547.2	368.7	19.7	368.1	118.4
1996/97	149.9	3.8	564.8	381.1	18.9	379.1	120.3
1997/98	151.2	3.8	574.5	387.0	27.6	379.6	127.7
1998/99	152.7	3.8	586.4	394.6	24.8	388.3	134.0
1999/00	155.3	3.9	608.2	408.9	22.8	399.8	143.1
2000/01	151.7	3.9	593.5	398.9	24.5	395.3	146.7
2001/02	150.7	3.9	594.7	399.7	27.9	413.4	133.0
2002/03	146.0	3.9	563.3	378.3	27.6	408.0	103.3
2003/04	148.4	3.9	584.5	391.9	27.2	414.0	81.1
2004/05	150.7	4.0	597.1	401.3	29.2	409.3	73.2
2005/06	152.7	4.1	623.1	418.3	29.5	415.8	75.7
2006/07	153.7	4.1	626.1	420.2	31.9	420.6	75.3
2007/08	154.3	4.1	639.4	429.0	29.1	426.6	77.6
2008/09	155.2	4.1	641.7	430.8	27.5	427.7	80.7

Notes: Stocks, exports and consumption are expressed on a milled basis in marketing years.

---

## **ENDNOTES TO GRAIN: WORLD MARKETS AND TRADE**

### **REGIONAL TABLES**

**North America:** Canada, Mexico, the United States.

**Central America:** Belize, Costa Rica, El Salvador, Guatemala, Honduras, Nicaragua, Panama.

**Caribbean:** Anguilla, Antigua and Barbuda, Aruba, Bahamas, Barbados, Bermuda, British Virgin Islands, Cayman Islands, Cuba, Dominica, Dominican Republic, French West Indies, Grenada, Guadeloupe, Haiti, Jamaica and Dep, Leeward-Windward Islands, Martinique, Montserrat, Netherlands Antilles, Puerto Rico, Kitts and Nevis, St. Lucia, St. Vincent and the Grenadines, Trinidad and Tobago, Turks and Caicos Islands, Virgin Islands of the U.S.

**South America:** Argentina, Bolivia, Brazil, Chile, Colombia, Ecuador, Falkland Islands (Islas Malvinas), French Guiana, Guyana, Paraguay, Peru, Suriname, Uruguay, Venezuela.

**EU:** Austria, Belgium/Luxembourg, Bulgaria, Cyprus, Czech Republic, Denmark, Estonia, Finland, France, Germany, Greece, Hungary, Ireland, Italy, Latvia, Lithuania, Malta, Netherlands, Poland, Portugal, Romania, Slovakia, Slovenia, Spain, Sweden, United Kingdom.

**Other Europe:** Albania, Azores, Bosnia and Herzegovina, Croatia, Former Yugoslavia, Gibraltar, Iceland, Macedonia, Montenegro, Norway, Serbia, Switzerland.

**Former Soviet Union:** Armenia, Azerbaijan, Belarus, Georgia, Kazakhstan, Kyrgyzstan, Moldova, Russia, Tajikistan, Turkmenistan, Ukraine, Uzbekistan.

**Middle East:** Bahrain, Iran, Iraq, Israel, Jordan, Kuwait, Lebanon, Oman, Qatar, Saudi Arabia, Syria, Turkey, United Arab Emirates, Yemen.

**North Africa:** Algeria, Egypt, Libya, Morocco, Tunisia.

**Sub-Saharan Africa:** all African countries except North Africa.

**East Asia:** China, Hong Kong, Japan, South Korea, North Korea, Macau, Mongolia, Taiwan.

**South Asia:** Afghanistan, Bangladesh, Bhutan, India, Nepal, Pakistan, Sri Lanka, Maldives.

**Southeast Asia:** Brunei, Burma, Cambodia, Indonesia, Laos, Malaysia, Philippines, Singapore, Thailand, Vietnam.

**Oceania:** Australia, Fiji, New Zealand, Papua New Guinea.

---

## **OTHER NOTES**

**Local Marketing Years (LMY):** LMY refers to the 12-month period following the main harvest, when the crop is marketed (i.e., consumed, traded, or stored). The year first listed begins a country's LMY for that commodity (2008/09 starts in 2008); except for summer grains in certain Southern Hemisphere countries and for rice in selected countries, where the second year begins the LMY (2008/09 starts in 2009). Key exporter LMY's are:

<b>Wheat</b>	<b>Corn</b>	<b>Barley</b>	<b>Sorghum</b>
Argentina (Dec/Nov)	Argentina (Mar/Feb)	Australia (Nov/Oct)	Argentina (Mar/Feb)
Australia (Oct/Sep)	Brazil (Mar/Feb)	Canada (Aug/Jul)	Australia (Mar/Feb)
Canada (Aug/Jul)	China (Oct/Sep)	EU-27 (Jul/Jun)	United States (Sep/Aug)
China (Jul/Jun)	South Africa (May/Apr)	Russia (Jul/Jun)	
EU-27 (Jul/Jun)	United States (Sep/Aug)	Ukraine (Jul/Jun)	
India (Apr/Mar)		United States (Jun/May)	
Kazakhstan (Jul/Jun)			
Russia (Jul/Jun)			
Turkey (Jun/May)			
Ukraine (Jul/Jun)			
United States (Jun/May)			

For a complete list of local marketing years, please see the FAS website (<http://www.fas.usda.gov/psdonline/psdAvailability.aspx>).

**Stocks:** Unless otherwise stated, stock data are based on an aggregate of differing local marketing years and should not be construed as representing world stock levels at a fixed point in time.

**Consumption:** World totals for consumption reflect total utilization, including food, seed, industrial, feed, and waste; as well as differences in local marketing year imports and local marketing year exports. Consumption statistics for regions and individual countries, however, reflect food, seed, industrial, feed, and waste only.

**Trade:** All PSD tables are balanced on the different local marketing years. All trade tables contain Trade Year (TY) data which puts all countries on a uniform, 12-month period for analytical comparisons: wheat is July/June; coarse grains, corn, barley, sorghum, oats, and rye are Oct/Sept; and rice is calendar year.

**EU Consolidation:** The trade figures starting from 1999/00 represent EU-27 and exclude all intra-trade. For the years 1960/61 through 1998/99, figures are the EU-15 and also exclude all intra-trade. EU-15 member states' data for grains are no longer maintained in the official USDA database. Data for the individual NMS-10, plus Bulgaria and Romania, exists only prior to 1999/00.

**Statistics:** (1) Wheat trade statistics include wheat, flour, and selected pasta products on a grain equivalent basis. (2) Rice trade statistics include rough, brown, milled, and broken on a milled

---

equivalent basis. (3) Coarse grains statistics include corn, barley, sorghum, oats, rye, millet, and mixed grains but exclude trade in barley malt, millet, and mixed grains.

**Unaccounted:** This term includes grain in transit, reporting discrepancies in some countries, and trade to countries outside the USDA database.

The Field Crops and Livestock Branch, Industry and Sector Analysis Division, Foreign Agricultural Service, USDA, Washington DC 20250, prepared this circular. Information is gathered from official statistics of foreign governments and other foreign source materials, reports of U.S. agricultural attachés and Foreign Service officers, office research, and related information. Further information may be obtained by writing the Division or telephoning (202) 720-6590.

**Note:** The previous report in this series was the Grain: World Markets and Trade Foreign Agricultural Service Circular FG 07-08 July 2008. For further details on world grain production, please see World Agricultural Production Foreign Agricultural Service Circular WAP 08-08 August 2008.

This circular is available in its entirety on the World Wide Web via the Foreign Agricultural Service Home Page. The address is: <http://www.fas.usda.gov>