

*DEPARTMENT OF HUMAN SERVICES
ADDICTIONS AND MENTAL HEALTH DIVISION*

**CHILDREN'S
MENTAL HEALTH
UTILIZATION
REPORT**

*OCTOBER 1, 2006
THROUGH
SEPTEMBER 30, 2007*



EXECUTIVE SUMMARY

The 2003 Oregon Legislative Assembly mandated significant changes for the Children's Mental Health System in Oregon. The *Children's Mental Health Utilization Report* describes how the Addictions and Mental Health Division (AMH) is implementing the required changes. This is the third report that covers the changes occurring within Children's Mental Health Services.

THIS REPORT COVERS THE FOLLOWING:

- Admissions to each of the various levels of care;
- Service Penetration Rate for Outpatient, PDTS, PRTS and Acute Care;
- Average Days of Service within PDTS and PRTS; Average Length of Stay within Acute Care, Sub-Acute Care, STS, SCIP, and SAIP;
- Readmissions to same or to a higher level of care;
- Delivery of Community-Based Services for various levels of care.

LIMITATIONS:

1. This report does not include tests of the statistical significance of apparent differences among providers or across time periods.
2. Data pulled is from the Decision Support/Surveillance and Utilization Review System (DSSURS) data system (unless otherwise noted) reflects only Medicaid eligible youth and the services delivered to the Medicaid eligible population, and;
3. There is a 180-day lag between the times a service is delivered and the time the services are contractually required to be billed. Any services delivered fewer than 180-days prior to the date the report is published will not be included.

REPORT SCHEDULE:

Reports will be produced on a quarterly basis.

TABLE OF CONTENTS

Executive Summary	i
-------------------------	---

ENROLLMENT & ELIGIBILITY

Figure 1: Enrollment and Eligibility of Children Age 0-17 by MHO: 3 rd Qtr 2007	1
Table 1: Enrollment for Children Age 0-17 by MHO: all quarters.....	1

ADMISSIONS

Table 2: Outpatient Admission by MHO.....	2
Table 3: PDTS Admissions by Provider.....	2
Table 4: PDTS Admissions by MHO	4
Table 5: PRTS A&E Admissions by Provider (CPMS data).....	5
Table 6: PRTS (non-A&E) Admissions by Provider (CPMS data)	5
Table 7: STS Admissions (FFS Data only).....	6
Table 8: Sub-Acute Admissions by MHO.....	6
Table 9: SCIP/SAIP Admissions by Provider	7
Table 10: Acute Care Admissions.....	8

PERCENTAGE RATES

Table 11: Outpatient Services Percentage Rate	9
Table 12: PDTS Services Percentage Rate	9
Table 13: Acute Care Services Percentage Rate.....	10

AVERAGE LENGTH OF STAY/DAYS OF SERVICE

Table 14: PDTS Average Days of Service by Providers	11
Table 15: PDTS Average Days of Service by MHO	12
Table 16: PRTS A&E Providers Average Length of Stay	13
Table 17: PRTS Providers Average Length of Stay.....	13
Table 18: STS Average LOS.....	14
Table 19: Sub-Acute Services Average LOS	14
Table 20: SCIP/SAIP Services Average LOS	15
Table 21: Acute Care Services Average LOS	15

DISTRIBUTION OF SERVICES

Figure 2: Assessments.....	17
Figure 3: Case Management	18
Figure 4: Child & Family Team Meeting	18
Figure 5: Crisis Services.....	19

TABLE OF CONTENTS

DISTRIBUTION OF SERVICES CONTINUED

Figure 6:	Family Therapy	19
Figure 7:	Group Therapy	20
Figure 8:	Individual Therapy	20
Figure 9:	Individual Therapy with Medication Management	21
Figure 10:	Level of Need Determination	21
Figure 11:	Medication Management	22
Figure 12:	Outpatient Therapy	22
Figure 13:	Respite Services	23
Figure 14:	Skills Training	23
Figure 15:	Sub-Acute Services	24
Figure 16:	Wrap Around Services	24

GLOSSARIES

Glossary of Terms	25
Glossary of Service Categories	29

ELIGIBILITY AND ENROLLMENT

CHILDREN AGE 0-17



ENROLLMENT AND ELIGIBILITY

The use of Medicaid enrollment/eligibility numbers will show the number of children who are eligible for services as well as those enrolled and able to obtain mental health services. The following enrollment numbers refer to the number enrolled at any point within the quarter.

FIGURE 1: ENROLLMENT AND ELIGIBILITY OF CHILDREN AGE 0-17

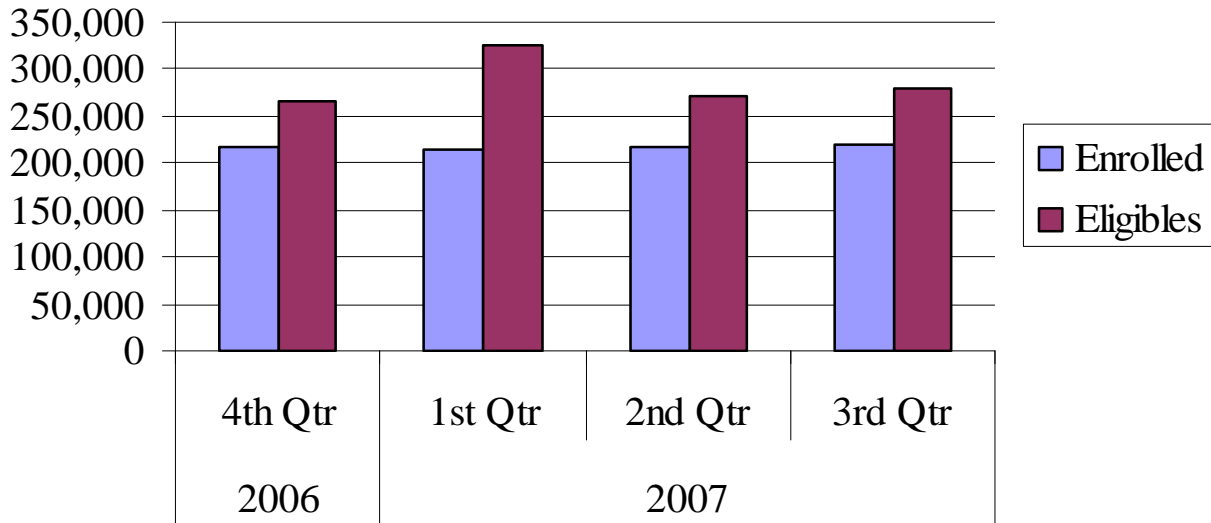


TABLE 1: ENROLLMENT FOR CHILDREN AGE 0-17 BY MHO: ALL QUARTERS

MHO	2006		2007	
	4 th Qtr	1 st Qtr	2 nd Qtr	3 rd Qtr
ABHA	15,538	15,319	15,514	15,396
Clackamas	14,909	14,974	15,244	15,433
FamilyCare	6,199	6,005	6,334	6,463
GOBHI	18,742	18,385	18,524	18,521
JBH	35,270	34,748	35,098	35,303
LaneCare	19,353	18,946	19,278	19,416
MVBCN	45,494	45,256	46,169	46,672
Verity	39,885	39,593	39,964	40,033
Washington	21,179	20,991	21,431	21,813
Total	216,569	214,217	217,556	219,050
Eligibles	266,298	325,461	272,336	280,087
Fee-For-Service	49,729	111,244	54,780	61,037

ADMISSIONS

CHILDREN AGE 0-17



OUTPATIENT ADMISSIONS

For the purposes of this report, children age 0-17 are considered as having been “admitted” to an outpatient service if there has been no outpatient service in the previous 90 days.

TABLE 2: OUTPATIENT ADMISSION RATE AMONG CHILDREN AGE 0-17 PER 1,000 ENROLLEES: BY MHO AND QUARTER

MHO	2006	2007		
	4 th Qtr	1 st Qtr	2 nd Qtr	3 rd Qtr
ABHA	21.1	19.3	19.2	14.7
Clackamas	22.5	20.5	18.9	16.6
FamilyCare	15.5	17.5	17.4	12.2
GOBHI	21.0	20.9	19.5	17.8
JBH	19.0	21.0	20.7	15.5
LaneCare	23.9	25.2	23.4	20.6
MVBCN	18.0	18.1	20.5	16.2
Verity	17.3	18.6	15.9	16.4
Washington	16.8	17.0	15.3	16.9
Total	19.2	19.6	19.1	16.5

N=Number of new admissions within quarter D=number of enrollees within quarter/1000

PSYCHIATRIC DAY TREATMENT SERVICES (PDTs) ADMISSIONS

For the purposes of this report, children age 0-17 are considered as having been “admitted” to PDTs service if there has been no PDTs service in the previous 30 days.

TABLE 3: PDTs ADMISSIONS AMONG CHILDREN AGE 0-17: BY PROVIDER AND PAYOR TYPE BY QUARTER

PDTs Provider/ Provider Number	MHO/ FFS ²	2006	2007			MHO vs. FFS*	% of Total Year Admissions**
		4 th Qtr	1 st Qtr	2 nd Qtr	3 rd Qtr		
Albertina Kerr	MHO	7	6	10	6	100%	6.3%
	FFS	0	0	0	0	0.0%	0.0%
Cascade Child Tx Center	MHO	2	3	11	3	95%	4.1%
	FFS	0	0	0	1	5.0%	0.2%
Child Center	MHO	5	4	6	7	88.0%	4.8%
	FFS	1	0	0	2	12.0%	0.6%

*MHO vs. FFS: n=total of either MHO or FFS/d=total of PDTs Provider

** % of Total Admissions: n=total of either MHO or FFS/d=total of all PDTs Admissions

(Table continued on next page)

² Fee-For-Service (FFS): Eligible for OHP and NOT enrolled with an MHO (open card).

TABLE 3: PDTS ADMISSIONS AMONG CHILDREN AGE 0-17: BY PROVIDER AND PAYOR TYPE BY QUARTER (CONTINUED)

PDTS Provider/ Provider number	MHO/ FFS ¹	2006	2007			MHO vs. FFS*	% of Total Year Admissions**
		4 th Qtr	1 st Qtr	2 nd Qtr	3 rd Qtr		
Edgefield	MHO	2	1	6	0	81.8%	1.9%
	FFS	1	0	1	0	18.2%	0.4%
Family Friends	MHO	14	6	3	6	100%	6.3%
	FFS	0	0	0	0	0.0%	0.0%
Grande Ronde Child Center	MHO	3	3	1	1	100%	1.7%
	FFS	0	0	0	0	0.0%	0.0%
Klamath Child & Family	MHO	9	21	17	8	96.5%	11.9%
	FFS	0	1	1	0	3.5%	0.4%
Lifeworks (10/23/07)	MHO	11	12	7	11	95.3%	8.9%
	FFS	1	0	0	1	4.7%	0.4%
Mid-Columbia CFC	MHO	1	5	2	4	85.7%	2.6%
	FFS	0	1	0	1	14%	0.4%
Morrison Center Hand to Hand	MHO	11	10	14	18	95%	11.4%
	FFS	1	1	1	0	5%	0.6%
OHSU	MHO	4	2	8	3	85.0%	3.7%
	FFS	2	0	1	0	15.0%	0.6%
Olalla Center (Lincoln Co)	MHO	3	3	3	1	83.3%	2.2%
	FFS	1	0	0	1	16.7%	0.4%
Old Mill School	MHO	2	0	1	1	100%	0.9%
	FFS	0	0	0	0	0.0%	0.0%
Pacific Child Center (closed 9/28/07)	MHO	11	3	3	0	94.4%	3.7%
	FFS	0	1	0	0	5.6%	0.2%
Parry Center	MHO	1	3	1	1	100.0%	1.3%
	FFS	0	0	0	0	0.0%	0.0%
Polk Adolescent Day Tx	MHO	2	3	1	0	85.7%	1.3%
	FFS	0	0	1	0	14.3%	0.2%
Poyama Land	MHO	3	2	1	3	100%	1.9%
	FFS	0	0	0	0	0.0%	0.0%

MHO vs. FFS: n=total of either MHO or FFS/d=total of PDTS Provider

% of Total Admissions: n=total of either MHO or FFS/d=total of all PDTS Admissions

(Table continued on next page)

¹ Fee-For-Service (FFS): Eligible for OHP and NOT enrolled with an MHO (open card).

TABLE 3: PDTS ADMISSIONS AMONG CHILDREN AGE 0-17: BY PROVIDER AND PAYOR TYPE BY QUARTER (CONTINUED)

PDTS Provider/ Provider number	MHO/ FFS ¹	2006	2007			MHO vs. FFS*	% of Total Year Admissions**
		4 th Qtr	1 st Qtr	2 nd Qtr	3 rd Qtr		
Riverside	MHO	8	22	15	5	87.7%	10.8%
	FFS	1	2	1	3	12.3%	1.5%
SOASTC	MHO	0	0	0	12	100%	2.6%
	FFS	0	0	0	0	0.0%	0.0%
SOCSTC	MHO	2	13	7	4	100.0%	5.6%
	FFS	0	0	0	0	0.0%	0.0%
Totals	MHO	101	122	117	94	93.7%	
	FFS	8	6	6	9	6.3%	
	Grand	109	128	123	103	100.0%	

MHO vs. FFS: n=total of either MHO or FFS/d=total of PDTS Provider

% of Total Admissions: n=total of either MHO or FFS/d=total of all PDTS Admissions

TABLE 4: PDTS ADMISSIONS CHILDREN AGE 0-17: BY MHO AND QUARTER

MHO/FFS	2006	2007			Annual
	4 th Qtr	1 st Qtr	2 nd Qtr	3 rd Qtr	
ABHA	7	6	16	7	36
Clackamas	6	9	15	5	35
FamilyCare	0	2	2	2	6
GOBHI	3	3	1	2	9
JBH	44	65	45	35	189
LaneCare	5	4	5	6	20
MVBCN	4	5	2	3	14
Verity	23	17	17	26	83
Washington	9	11	14	8	42
Total	101	122	117	94	434
FFS	8	6	6	9	29

¹ Fee-For-Service (FFS): Eligible for OHP and NOT enrolled with an MHO (open card).

PSYCHIATRIC RESIDENTIAL TREATMENT SERVICES (PRTS) AND ASSESSMENT & EVALUATION (A&E) ADMISSIONS

For the purposes of this report, children age 0-17 are considered as having been “admitted” to A&E and/or PRTS service if there has been a break in service for 1 day or more. These data have been pulled from the Client Process Monitoring System (CPMS).

TABLE 5: PRTS A&E ADMISSIONS: CHILDREN AGE 0-17 BY PROVIDER

	2006	2007		
	4 th Qtr	1 st Qtr	2 nd Qtr	3 rd Qtr
Children’s Farm Home	24	23	24	23
Christie School	13	30	19	16
Pendleton Academy	11	18	12	10
SOASTC	12	12	10	6
Total	60	83	65	55

Data Source: CPMS 2006/2007

Data Pulled: 5/19/08

TABLE 6: PRTS (NON-A&E) ADMISSIONS: CHILDREN AGE 0-17 BY PROVIDER

	2006	2007		
	4 th Qtr	1 st Qtr	2 nd Qtr	3 rd Qtr
Albertina Kerr	10	12	10	6
Children's Farm Home	20	3	20	24
Christie School	21	15	21	21
Edgefield Children's	2	1	2	0
Jasper Mountain	14	14	18	16
Parry Center	13	17	18	18
Pendleton Academy	8	5	8	9
Riverbend Youth	0	1	0	0
Trillium Central Or	3	8	2	1
Total	91	76	99	95

Data Source: CPMS 2006/2007

Data Pulled: 5/19/08

STABILIZATION TRANSITION SERVICES (STS) ADMISSIONS

TABLE 7: STS ADMISSIONS FOR CHILDREN AGE 0-17: FFS DATA ONLY

STS Provider (FFS only)	2006	2007			% of Total Year STS Admissions
	4 th Qtr	1 st Qtr	2 nd Qtr	3 rd Qtr	
Children's Farm Home	3	2	4	2	84.6%
Christie School	0	0	0	1	7.7%
Pendleton Academies	0	0	0	0	0.0%
SOASTC	1	0	0	0	7.7%
Totals	4	2	4	3	100.0%

n=STS Provider Admissions/d=Total STS Admission

SUB-ACUTE SERVICES ADMISSIONS

The Procedure code used to bill for “sub-acute services”, (H2013 - psychiatric health facility service, per Diem) is utilized by only a few youth and family providers. Any increases in numbers or additional providers listed may be due to billing providers utilizing the H2013 procedure code when they are not authorized.

TABLE 8: SUB-ACUTE ADMISSIONS FOR CHILDREN AGE 0-17: BY MHO/FFS

Sub-Acute Providers	MHO/ FFS ¹	2006	2007			MHO vs. FFS	% of Total Year MHO/FFS Sub-Acute Admissions
		4 th Qtr	1 st Qtr	2 nd Qtr	3 rd Qtr		
Albertina Kerr	MHO	47	42	45	54	84.3%	56.8%
	FFS	8	14	7	6	15.7%	10.6%
Children’s Farm Home	MHO	1	1	1	1	57.1%	1.2%
	FFS	0	2	1	0	42.9%	0.9%
Christie Care	MHO	0	1	4	9	63.6%	4.2%
	FFS	0	0	6	2	36.4%	2.4%
Jasper Mountain	MHO	16	18	14	16	100%	19.3%
	FFS	0	0	0	0	0.0%	0.0%

(Table continued on next page)

¹ Fee-For-Service (FFS): Eligible for OHP and NOT enrolled with an MHO (open card)

SUB-ACUTE SERVICES ADMISSIONS (continued)

TABLE 8: SUB-ACUTE ADMISSIONS FOR CHILDREN AGE 0-17: BY MHO/FFS

Sub-Acute Providers	MHO/FFS ¹	2006	2007			MHO vs. FFS	% of Total Year MHO/FFS Sub-Acute Admissions
		4 th Qtr	1 st Qtr	2 nd Qtr	3 rd Qtr		
Parry Center	MHO	2	3	0	0	35.7%	1.5%
	FFS	1	1	4	3	64.3%	2.7%
Trillium Central Oregon	MHO	0	0	0	1	100%	0.3%
	FFS	0	0	0	0	0.0%	0.0%
Total	MHO	66	65	64	81	83.4%	
	FFS	9	17	18	11	16.6%	
	GRAND	75	82	82	92	100%	

n=Sub-Acute Provider Admissions/d=Total Sub-Acute Admission

**SECURE CHILDREN INPATIENT PROGRAM (SCIP)/
SECURE ADOLESCENT INPATIENT PROGRAM (SAIP) ADMISSIONS**

TABLE 9: SCIP/SAIP ADMISSIONS FOR CHILDREN AGE 0-17 BY PROVIDER

Program	2006	2007		
	4 th Qtr	1 st Qtr	2 nd Qtr	3 rd Qtr
SCIP	2	6	3	3

Program	2006	2007		
	4 th Qtr	1 st Qtr	2 nd Qtr	3 rd Qtr
SAIP	17	9	14	8

Data Source: CPMS 2006/2007

Data Pulled: 5/19/08

¹ Fee-For-Service (FFS): Eligible for OHP and NOT enrolled with an MHO (open card)

ACUTE CARE ADMISSIONS FOR MENTAL HEALTH

TABLE 10: ACUTE CARE ADMISSIONS FOR CHILDREN AGE 0-17 PER 1,000 ENROLLED

	2006	2007			
MHO	4 th Qtr	1 st Qtr	2 nd Qtr	3 rd Qtr	Annual
ABHA	0.26	0.59	0.06	0.13	0.26
Clackamas	0.74	0.60	0.72	0.58	0.66
FamilyCare	0.65	1.17	0.32	0.15	0.56
GOBHI	0.21	0.11	0.16	0.22	0.18
JBH	0.60	0.69	0.71	0.37	0.59
LaneCare	0.10	0.26	0.31	0.10	0.19
MVBCN	0.13	0.02	0.15	0.30	0.15
Verity	0.75	0.96	0.95	0.70	0.84
Washington	0.80	0.71	0.37	0.46	0.59
Total	0.46	0.51	0.46	0.38	0.45

*SERVICE
PERCENTAGE
RATES*

FOR CHILDREN AGE 0-17



OUTPATIENT SERVICES

Service penetration rates are a way to measure the demand for service and/or ability to access services. The service percentage rate is the number of children receiving service within a time period out of the number of children with any enrollment during that time period (expressed as a %). See the Glossary of Terms at the end of this report for further information.

TABLE 11: OUTPATIENT SERVICES PERCENTAGE RATE FOR CHILDREN AGE 0-17

	2006	2007		
MHO	4 th Qtr	1 st Qtr	2 nd Qtr	3 rd Qtr
ABHA	4.9%	4.9%	5.1%	4.3%
Clackamas	4.8%	4.9%	5.2%	4.8%
FamilyCare	4.3%	4.4%	4.3%	3.8%
GOBHI	5.1%	5.2%	5.3%	4.8%
JBH	5.1%	5.3%	5.8%	4.8%
LaneCare	7.8%	8.2%	8.6%	7.8%
MVBCN	4.6%	4.6%	4.8%	4.4%
Verity	5.4%	5.6%	5.8%	5.6%
Washington	4.2%	4.2%	4.1%	4.1%
Total	5.1%	5.3%	5.5%	5.0%

n=Served Children/d=Enrolled Children

TABLE 12: PDTS SERVICES PERCENTAGE RATE FOR CHILDREN AGE 0-17

	2006	2007		
MHO	4 th Qtr	1 st Qtr	2 nd Qtr	3 rd Qtr
ABHA	0.18%	0.20%	0.15%	0.16%
Clackamas	0.21%	0.20%	0.20%	0.14%
FamilyCare	0.05%	0.05%	0.05%	0.05%
GOBHI	0.06%	0.07%	0.07%	0.06%
JBH	0.30%	0.30%	0.33%	0.33%
LaneCare	0.20%	0.21%	0.20%	0.19%
MVBCN	0.05%	0.06%	0.05%	0.05%
Verity	0.14%	0.14%	0.15%	0.17%
Washington	0.15%	0.16%	0.16%	0.15%
Total	0.17%	0.17%	0.17%	0.17%

n= children receiving PDTS Services/d=Enrolled Children

TABLE 13: ACUTE CARE SERVICES PERCENTAGE RATE CHILDREN AGE 0-17: BY MHO AND QUARTER

	2006	2007		
	4th Qtr	1st Qtr	2nd Qtr	3rd Qtr
ABHA	0.03%	0.06%	0.01%	0.01%
Clackamas	0.07%	0.06%	0.07%	0.06%
FamilyCare	0.06%	0.12%	0.03%	0.02%
GOBHI	0.02%	0.01%	0.02%	0.02%
JBH	0.06%	0.07%	0.07%	0.04%
LaneCare	0.01%	0.03%	0.03%	0.01%
MVBCN	0.01%	0.00%	0.02%	0.03%
Verity	0.08%	0.10%	0.10%	0.07%
Washington	0.08%	0.07%	0.04%	0.05%
Total	0.05%	0.05%	0.05%	0.04%

n=Acute admissions/d=Enrolled Children

***DAYS OF SERVICE
& LENGTH OF
STAY***

**FOR
CHILDREN AGE 0-17**



PSYCHIATRIC DAY TREATMENT SERVICES (PDTs)

An episode of PDTs care is said to have ended when 30 days have passed since the last PDTs service. The total days of service within an episode of PDTs care includes only those days that the child receives day treatment. See the Glossary of Terms located at the end of this report.

TABLE 14: AVERAGE DAYS OF SERVICE WITHIN EPISODES OF PDTs CARE ENDING IN THE FIRST AND SECOND HALF OF 2006/07: BY PDTs PROVIDER (KEY: N/A=NO DISCHARGES)

October 2006 through September 2007						
		Oct 06 thru Mar 07		Apr 07 thru Sept 07		
PDTs Provider	MHO/ FFS ¹	# Episodes Ending	Avg Days	# Episodes Ending	Avg Days	Annual Avg
Albertina Kerr	MHO	11	66.6	12	51.1	58.5
	FFS	1	85.0	0	N/A	85.0
Cascade Child Tx Center	MHO	13	205.8	7	60.1	154.9
	FFS	1	199.0	1	322.0	260.5
Child Center	MHO	10	137.0	15	193.3	170.8
	FFS	0	N/A	1	128.0	128.0
Edgefield	MHO	6	56.3	10	86.0	74.9
	FFS	1	5.0	1	15.0	10.0
Family Friends	MHO	21	21.2	10	121.7	53.6
	FFS	1	98.0	0	N/A	98.0
Grande Ronde Child Center	MHO	4	130.5	5	183.2	159.8
	FFS	0	N/A	1	228.0	228.0
Klamath Child & Family	MHO	37	57.9	23	115.3	79.9
	FFS	2	130.0	1	97.0	119.0
LifeWorks	MHO	19	95.2	19	132.5	113.8
	FFS	1	1.0	1	16.0	8.5
Mid-Columbia CFC	MHO	5	112.4	16	112.4	112.4
	FFS	1	96.0	3	76.3	81.3
Morrison Hand to Hand - Tribal	MHO	20	120.3	26	107.5	113.1
	FFS	3	85.0	2	131.0	103.4
OHSU	MHO	7	101.6	24	146.3	136.2
	FFS	1	52.0	2	99.0	83.3
Olalla Center (Lincoln Co)	MHO	9	218.0	2	130.0	202.0
	FFS	2	1.0	1	115.0	39.0
Old Mill School	MHO	3	99.0	3	287.7	193.3
	FFS	0	N/A	0	N/A	N/A

(Table continued on next page.)

¹ Fee-For-Service (FFS): Eligible for OHP and NOT enrolled with an MHO (open card)

TABLE 14: AVERAGE DAYS OF SERVICE WITHIN EPISODES OF PDTs (Continued)

PDTs Provider	MHO/ FFS ¹	October 2006 through September 2007				Annual Avg LOS
		Oct 06 thru Mar 07		Apr 07 thru Sept 07		
		# Episodes Ending	Avg Days	# Episodes Ending	Avg Days	
Pacific Child Center	MHO	6	8.5	13	120.2	84.9
	FFS	1	164.0	2	181.5	175.7
Parry Center	MHO	8	50.5	4	89.8	63.6
	FFS	1	30.0	0	N/A	30.0
Polk Adolescent Day Tx	MHO	3	174.3	2	171.5	173.2
	FFS	2	174.5	0	N/A	174.5
Poyama Land	MHO	3	165.3	8	161.4	162.5
	FFS	0	N/A	0	N/A	N/A
Riverside Adolescent	MHO	34	39.9	18	62.7	47.8
	FFS	1	13.0	5	93.0	79.7
SOASTC	MHO	0	N/A	4	38.5	38.5
	FFS	0	N/A	0	N/A	N/A
SOCSTC	MHO	18	29.9	11	83.8	50.3
	FFS	0	N/A	0	N/A	N/A
Total Avg Days of Service	MHO	237	81.6	232	116.1	98.7
	FFS	19	84.7	21	116.1	101.2

N/A=no discharges

TABLE 15: PDTs PROVIDERS AVERAGE DAYS OF SERVICE FOR CHILDREN 0-17

	October 2006 through September 2007				Annual Avg LOS
	Oct 06 thru Mar 07		Apr 07 thru Sept 07		
	# Episodes Ending	Avg Days	# Episodes Ending	Avg Days	
ABHA	25	197.4	13	122.6	171.8
Clackamas	22	78.0	39	88.5	84.7
FamilyCare	3	80.3	4	65.5	71.9
GOBHI	4	130.5	6	197.5	170.7
JBH	116	39.1	79	96.6	62.4
LaneCare	10	137.0	14	203.6	175.8
MVBCN	6	169.8	10	163.4	165.8
Verity	33	94.2	30	113.2	103.3
Washington	18	105.3	37	137.2	126.8
Total	237	81.6	232	116.7	99.0
FFS	20	80.5	17	143.4	109.4

¹ Fee-For-Service (FFS): Eligible for OHP and NOT enrolled with an MHO (open card)

TABLE 16: PRTS A&E PROVIDERS AVERAGE LENGTH OF STAY FOR CHILDREN 0-17

Provider	2006		2007						Annual	
	4 th Qtr		1 st Qtr		2 nd Qtr		3 rd Qtr		Annual Discharges	Annual Avg Days
	Discharges	Avg Days	Discharges	Avg Days	Discharges	Avg Days	Discharges	Avg Days		
Children' Farm Home	25	55.68	16	83.31	31	84.10	17	64.00	89	72.13
Christie School	14	62.07	19	46.47	29	66.90	14	67.57	76	61.03
Pendleton Academy	15	75.47	14	52.29	12	75.17	14	57.86	55	65.02
SOASTC	12	77.83	10	82.00	13	69.31	9	78.11	44	76.32
Total	66	65.56	59	63.86	85	74.71	54	65.69	264	68.15

Data Source: CPMS 2006/2007

Data Pulled: 3/21/08

TABLE 17: PRTS PROVIDERS AVERAGE LENGTH OF STAY FOR CHILDREN 0-17

Provider	2006		2007						Annual	
	4 th Qtr		1 st Qtr		2 nd Qtr		3 rd Qtr		Annual Discharges	Annual Avg LOS
	Discharges	Avg Days	Discharges	Avg Days	Discharges	Avg Days	Discharges	Avg Days		
Albertina Kerr	4	229.50	12	98.75	15	71.07	7	107.71	38	103.24
Children's Farm Home	17	66.47	15	115.67	12	124.17	18	63.44	62	88.66
Christie School	27	168.44	25	164.48	21	113.38	14	163.43	87	153.21
Edgefield Children's	10	117.20	1	26.00	0	N/A	1	103.00	12	108.42
Pendleton Academy	6	71.17	8	80.38	15	90.73	16	125.31	45	98.58
Parry Center	13	104.85	8	72.00	18	107.72	22	116.50	61	105.59
Jasper Mountain	1	168.00	7	131.29	7	364.43	15	222.60	30	232.57
SOASTC	0	N/A	0	N/A	0	N/A	0	N/A	0	N/A
Trillium Central Or	5	124.60	6	82.83	6	95.67	2	107.00	19	100.42
Total	83	153.18	82	124.52	94	103.12	95	119.60	354	124.24

Data Source: CPMS 2006/2007

Data Pulled: 3/21/08

STABILIZATION TRANSITION SERVICES (STS) LENGTH OF STAY (LOS)

TABLE 18: STS AVERAGE LOS FOR CHILDREN 0-17

STS Provider	2006		2007						Annual Avg LOS
	4 th Qtr		1 st Qtr		2 nd Qtr		3 rd Qtr		
	D/C	Avg LOS	D/C	Avg LOS	D/C	Avg LOS	D/C	Avg LOS	
Children's Farm Home	3	16.7	2	15.5	4	13.0	2	19.5	15.6
Christie School	0	N/A	0	N/A	0	N/A	1	6.0	6.0
Pendleton Academies	0	N/A	0	N/A	0	N/A	0	N/A	N/A
SOASTC	1	7.0	0	N/A	0	N/A	0	N/A	7.0
Totals	4	14.3	2	15.5	4	13.0	3	15.0	14.2

NA=No Discharges

D/C=Discharges

SUB-ACUTE SERVICES

TABLE 19: SUB-ACUTE SERVICES AVERAGE LOS FOR CHILDREN 0-17

Sub-Acute Providers	MHO/ FFS ¹	2006		2007						Annual Avg LOS
		4 th Qtr		1 st Qtr		2 nd Qtr		3 rd Qtr		
		D/C	Avg LOS	D/C	Avg LOS	D/C	Avg LOS	D/C	Avg LOS	
Albertina Kerr	MHO	42	11.1	42	16.4	48	15.2	53	10.9	13.3
	FFS	7	12.9	14	13.7	9	14.9	4	14.3	13.9
Children's Farm Home	MHO	1	64.0	1	21.0	0	N/A	2	20.0	31.3
	FFS	1	175.0	1	1.0	2	60.5	0	N/A	74.3
Christie Care	MHO	0	N/A	1	3.0	3	20.0	10	11.3	12.6
	FFS	0	N/A	0	N/A	6	17.0	2	2.5	13.4
Jasper Mountain	MHO	16	3.2	17	2.9	14	4.4	15	3.4	3.4
	FFS	0	N/A	0	N/A	0	N/A	0	N/A	N/A
Parry Center	MHO	2	31.5	2	19.5	1	16.0	0	N/A	23.6
	FFS	1	21.0	1	14.0	3	14.7	3	26.0	19.6
Trillium Central Oregon	MHO	0	N/A	0	N/A	0	N/A	1	1.0	1.0
	FFS	0	N/A	0	N/A	0	N/A	0	N/A	N/A
Total	MHO	61	10.6	63	12.7	66	13.1	81	9.7	11.4
	FFS	9	31.8	16	12.9	20	20.1	9	15.6	19.1

NA=no discharges D/C=discharges

¹ Fee-For-Service (FFS): Eligible for OHP and NOT enrolled with an MHO (open card)

SECURE CHILDREN INPATIENT PROGRAM (SCIP)/ SECURE ADOLESCENT INPATIENT PROGRAM (SAIP) ADMISSIONS

TABLE 20: SCIP/SAIP SERVICES AVERAGE LOS FOR CHILDREN 0-17

	2006		2007						Annual Avg LOS
	4 th Qtr		1 st Qtr		2 nd Qtr		3 rd Qtr		
	D/C	Avg LOS	D/C	Avg LOS	D/C	Avg LOS	D/C	Avg LOS	
SCIP	0	N/A	5	285.0	5	347.8	5	127.6	253.5
SAIP	8	120.4	9	102.3	18	87.9	10	118.6	103.4

Data Source: CPMS n=total days/d=discharges
Date Pulled: 3/12/08 D/C=discharges N/A: no discharges



ACUTE CARE SERVICES

TABLE 21: ACUTE CARE SERVICES AVERAGE LOS

MHO Contractors	2006		2007						Annual Avg LOS
	4 th Qtr		1 st Qtr		2 nd Qtr		3 rd Qtr		
	D/C	Avg LOS	D/C	Avg LOS	D/C	Avg LOS	D/C	Avg LOS	
ABHA	5	5.4	8	3.8	2	6.0	2	6.5	4.8
Clackamas	9	6.8	11	5.8	10	8.2	9	9.3	7.5
FamilyCare	5	5.4	7	5.9	2	5.5	1	8.0	5.8
GOBHI	4	8.0	3	4.7	3	7.7	3	6.0	6.7
JBH	26	6.1	23	6.7	23	5.9	16	6.9	6.3
LaneCare	2	6.0	5	7.6	6	6.7	2	11.5	7.5
MVBCN	5	4.4	2	11.0	7	7.1	14	9.2	8.0
Verity	26	5.7	39	7.2	42	7.6	25	8.0	7.2
Washington	17	7.6	15	8.9	8	9.8	10	6.9	8.2
Total	99	6.2	113	6.9	103	7.3	82	8.0	7.1

NA=no discharges D/C=discharges

***DISTRIBUTION OF
COMMUNITY
BASED SERVICES***

**FOR
CHILDREN AGE 0-17**



The Distribution of Services formerly looked at the number of encounters (i.e. the number of times a member received a particular service) rather than the “units” of service (i.e. 15 minutes, 30 minutes, or 1 day) due to the unequivocal units across the different types of service. In this report, however, the distribution of services will be reflected as “units” of service with the equal application of one (1) unit of service equaling 15 minutes. Thus 1 day of service will equal 96 units; 1 month of service will equal 2880 units of service. See the Service Category Glossary for the specific number of units for each of the procedure codes.

For a listing of the Mental Health Medicaid Procedure Codes and Reimbursement Rates, please click on the following link:

<http://www.oregon.gov/DHS/mentalhealth/publications/main.shtml> then scroll down to find the current list of codes.

FIGURE 2: ASSESSMENTS BY MHO: 3RD QTR 2007 – CHILDREN 0-17

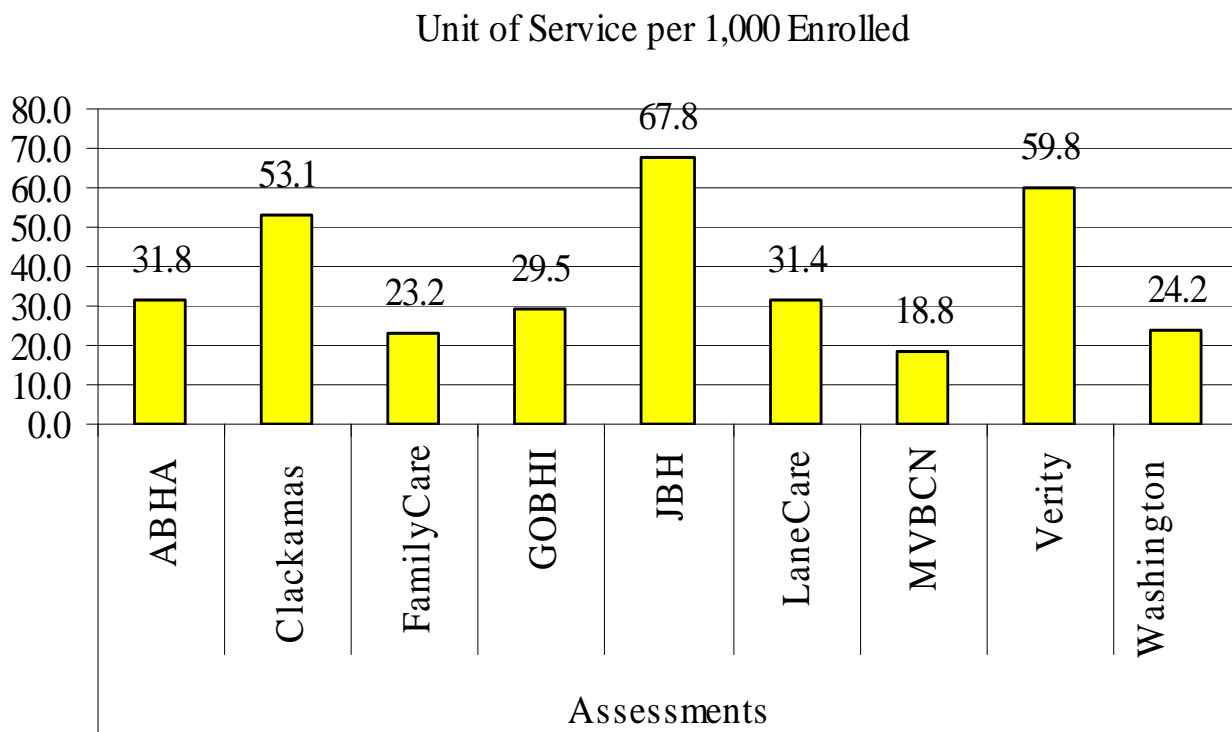


FIGURE 3: CASE MANAGEMENT BY MHO: 3RD QTR 2007 – CHILDREN 0-17

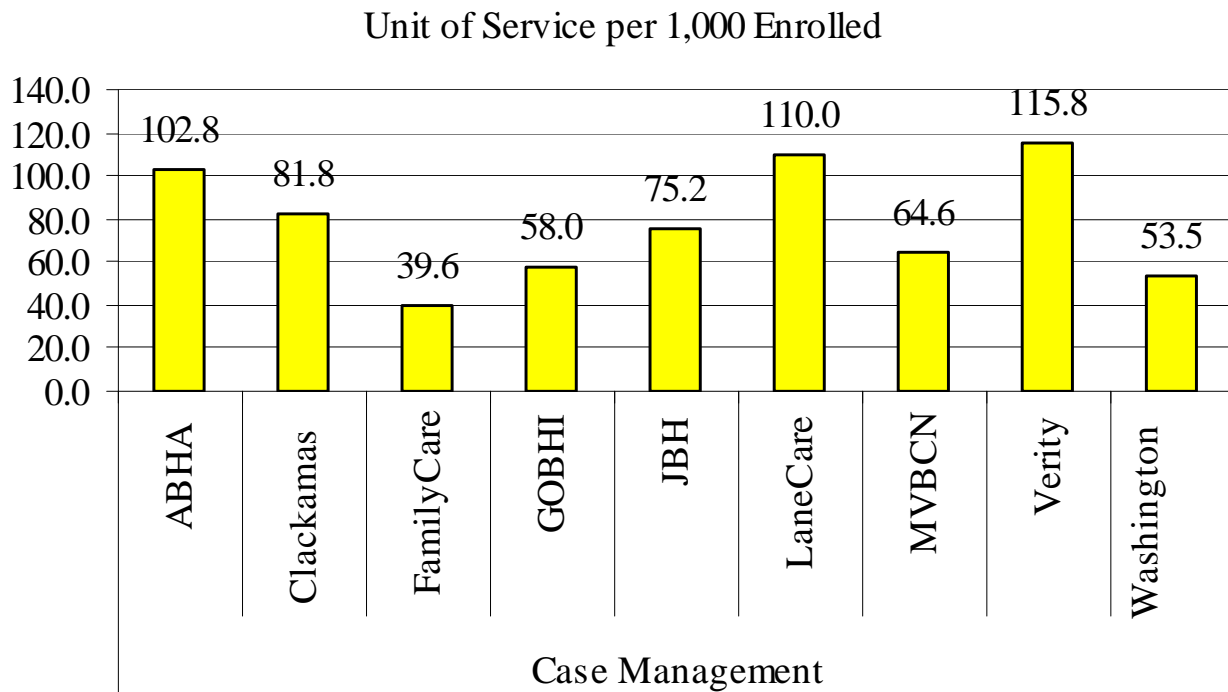


FIGURE 4: CHILD & FAMILY TEAM MEETING BY MHO: 3RD QTR 2007 – CHILDREN 0-17

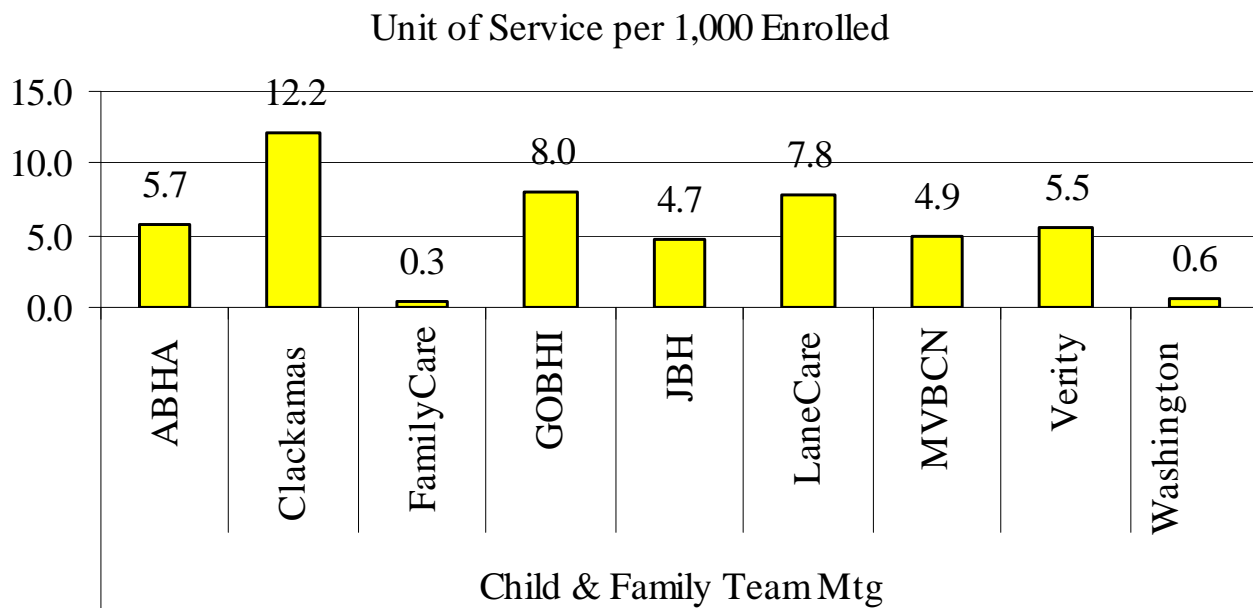


FIGURE 5: CRISIS SERVICES BY MHO: 3RD QTR 2007 – CHILDREN 0-17

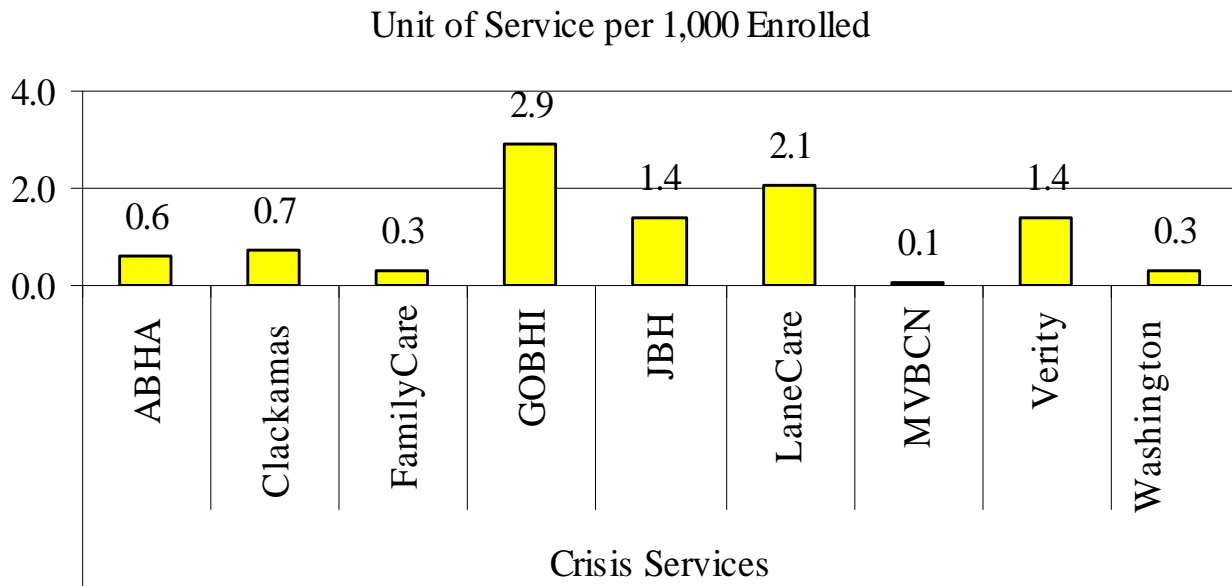


FIGURE 6: FAMILY THERAPY BY MHO: 3RD QTR 2007 – CHILDREN 0-17

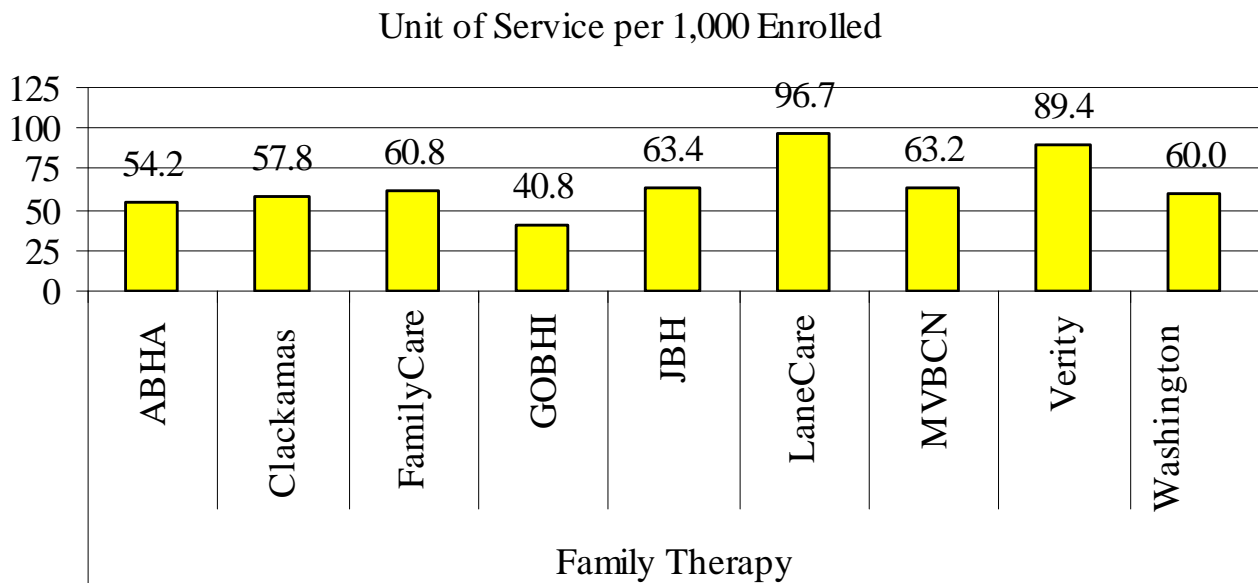


FIGURE 7: GROUP THERAPY BY MHO: 3RD QTR 2007 – CHILDREN 0-17

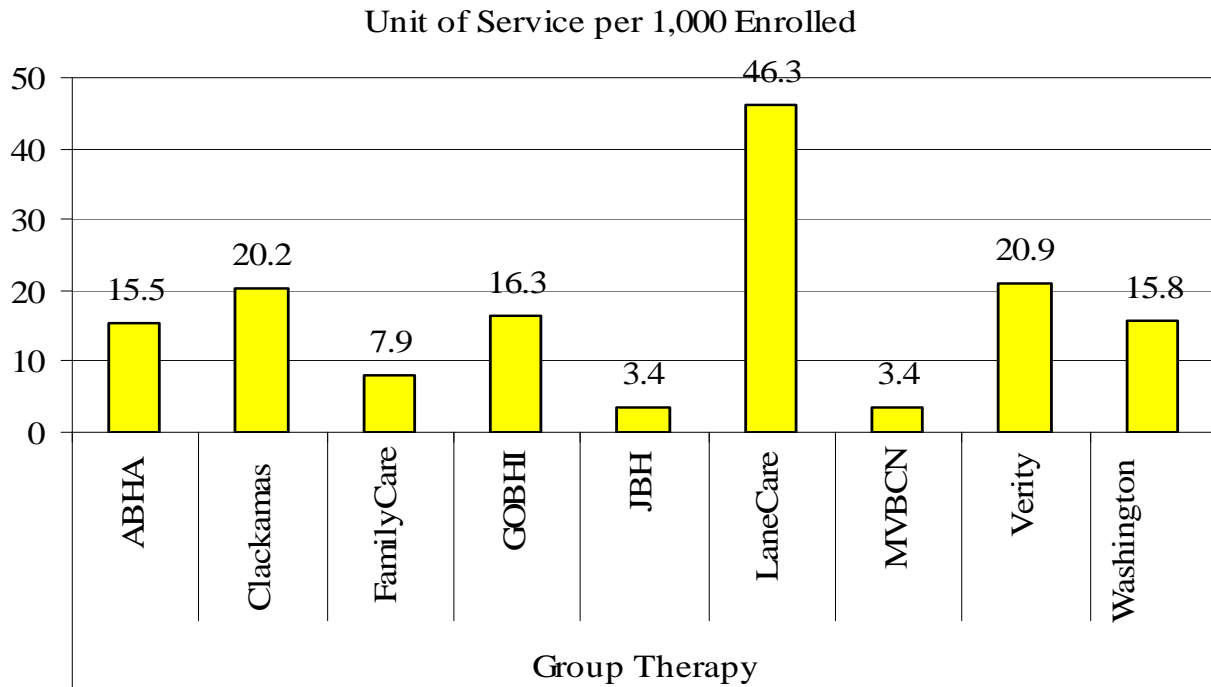
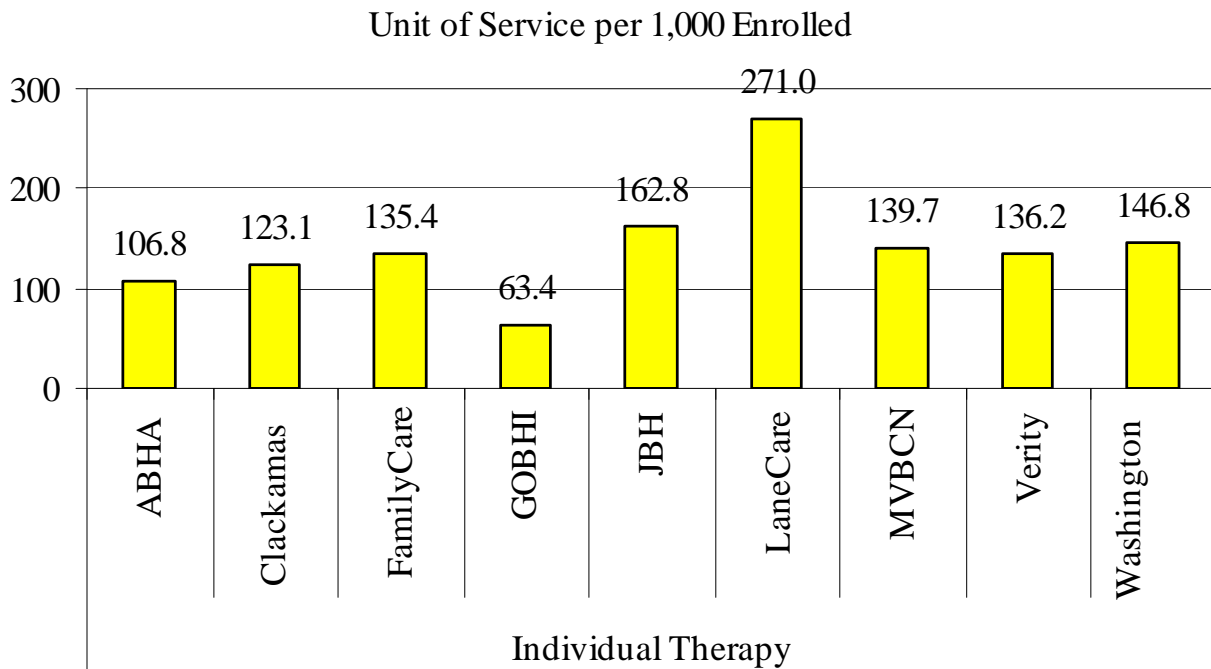
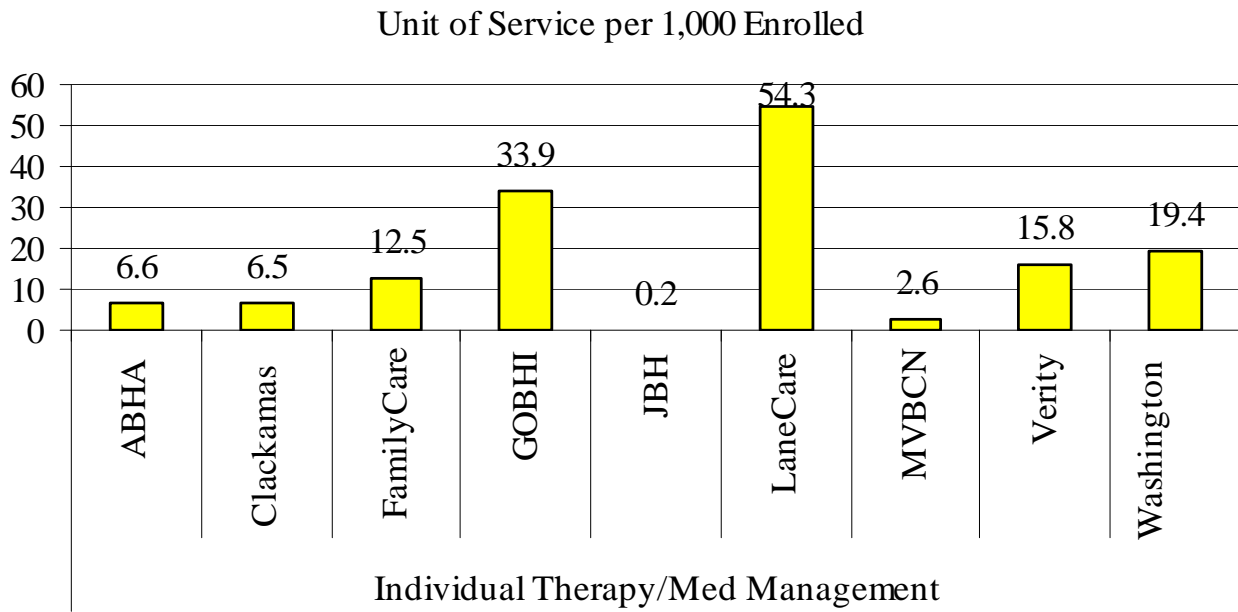


FIGURE 8: INDIVIDUAL THERAPY BY MHO: 3RD QTR 2007 – CHILDREN 0-17



**FIGURE 9: INDIVIDUAL THERAPY WITH MEDICATION MANAGEMENT BY MHO:
3RD QTR 2007 – CHILDREN 0-17**



**FIGURE 10: LEVEL OF NEED DETERMINATION BY MHO: 3RD QTR 2007 –
CHILDREN 0-17**

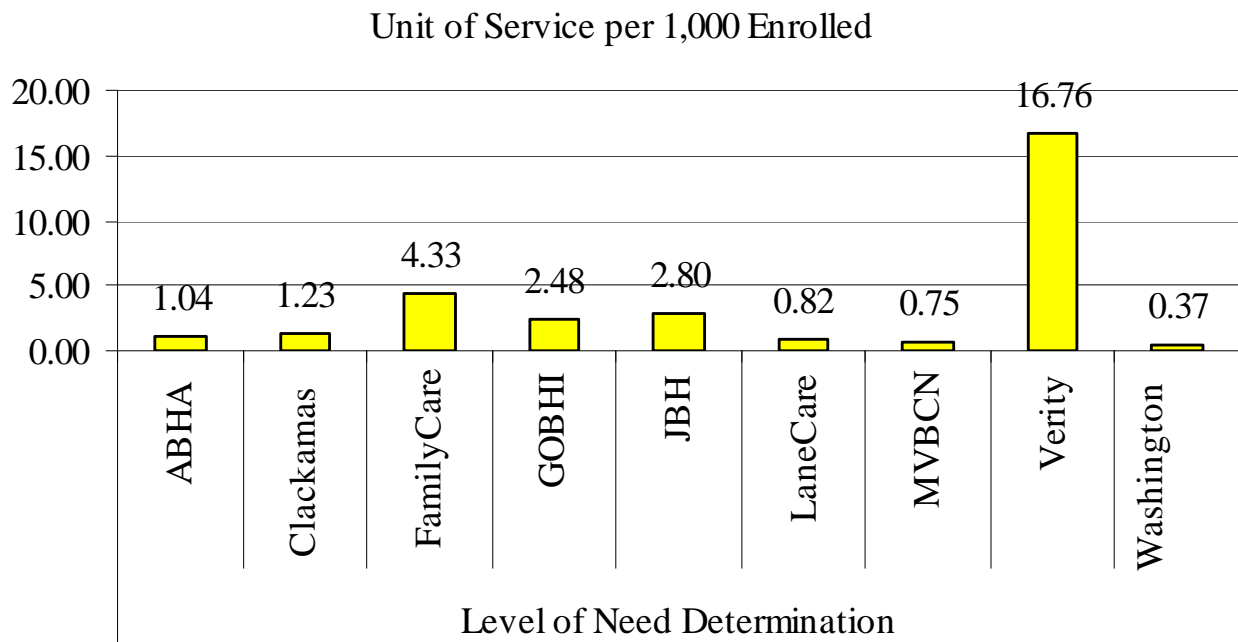


FIGURE 11: MEDICATION MANAGEMENT BY MHO: 3RD QTR 2007 – CHILDREN 0-17

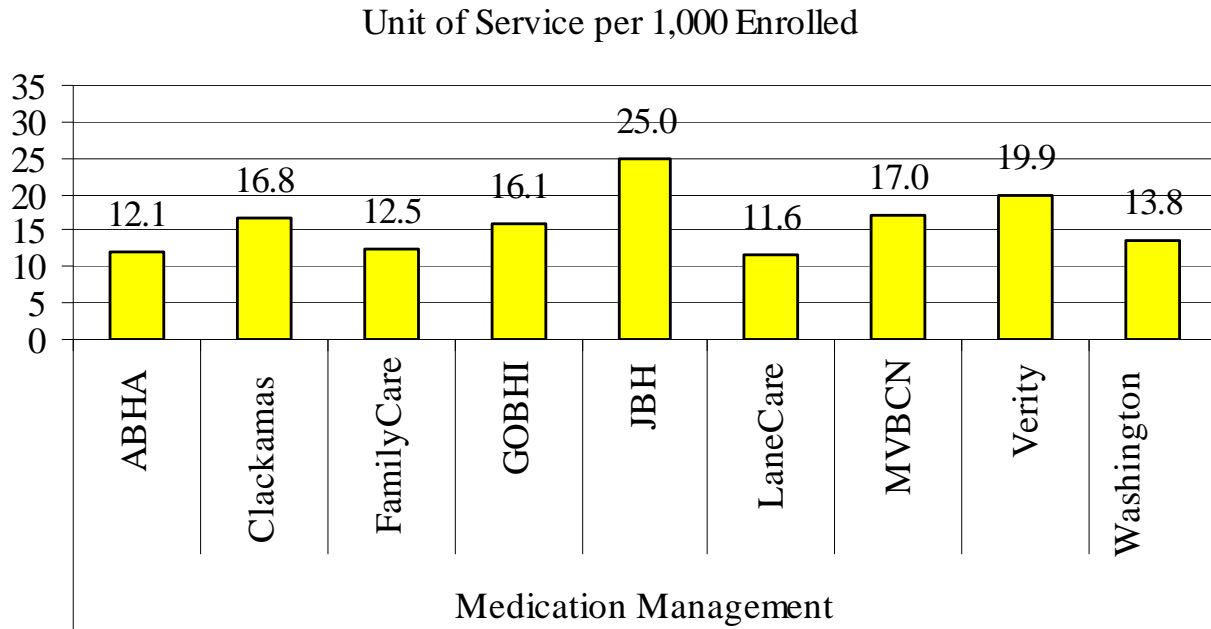


FIGURE 12: OUTPATIENT THERAPY BY MHO: 3RD QTR 2007 – CHILDREN 0-17

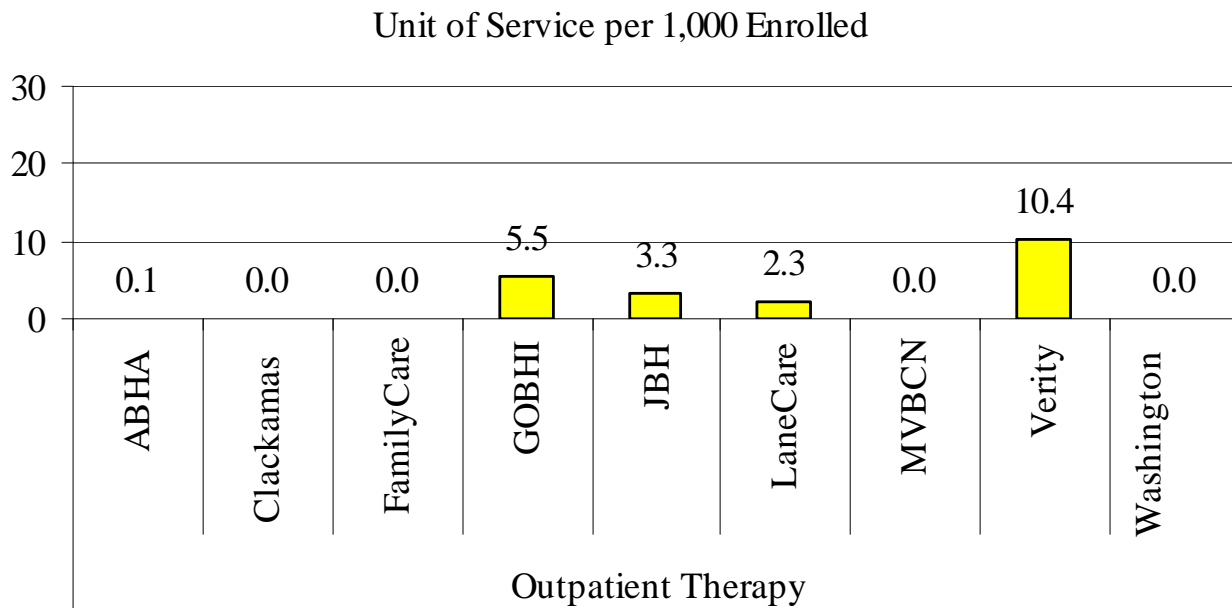


FIGURE 13: RESPITE SERVICES BY MHO: 3RD QTR 2007 – CHILDREN 0-17

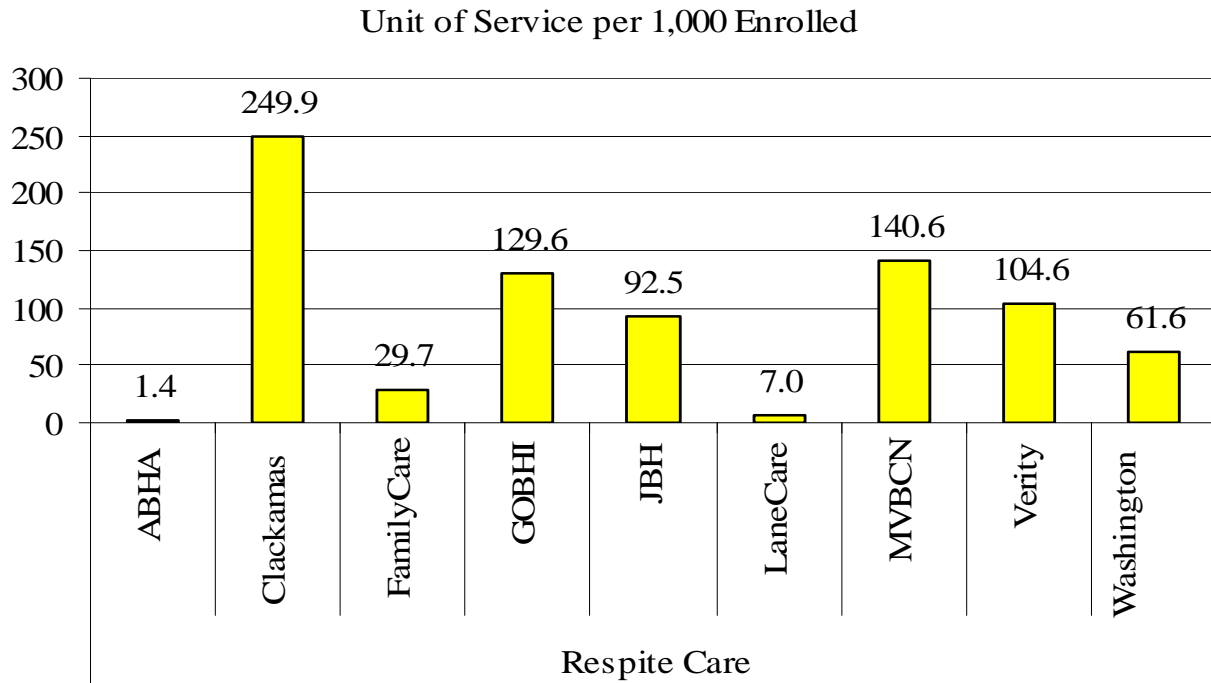


FIGURE 14: SKILLS TRAINING BY MHO: 3RD QTR 2007 – CHILDREN 0-17

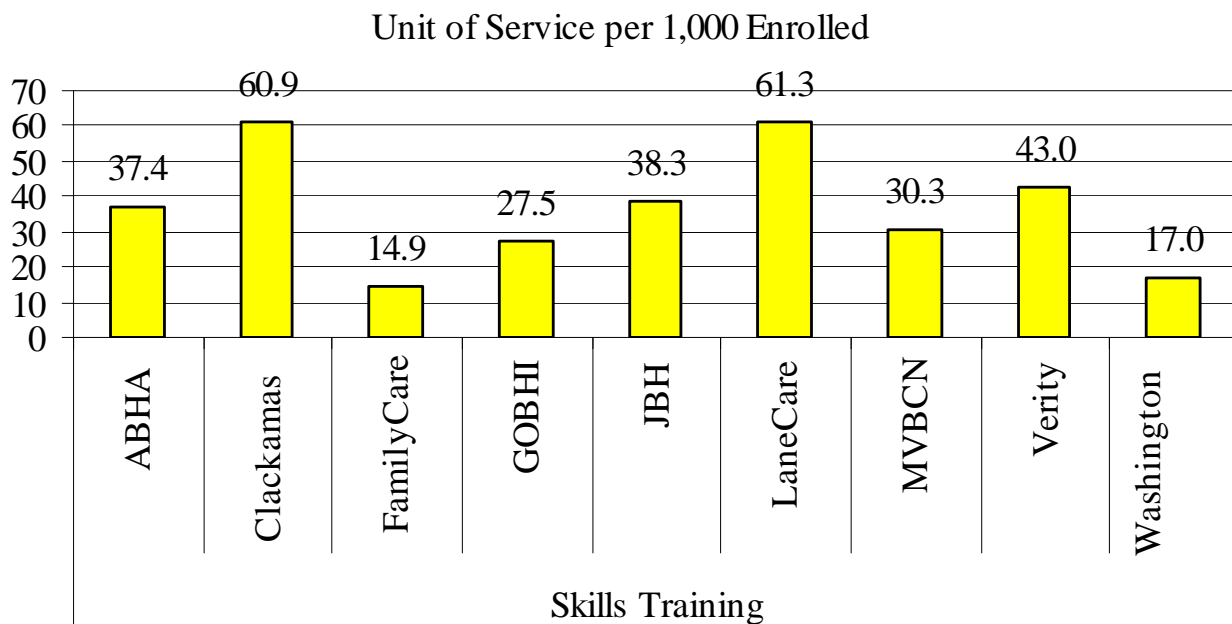


FIGURE 15: SUB-ACUTE SERVICES BY MHO: 3RD QTR 2007 – CHILDREN 0-17

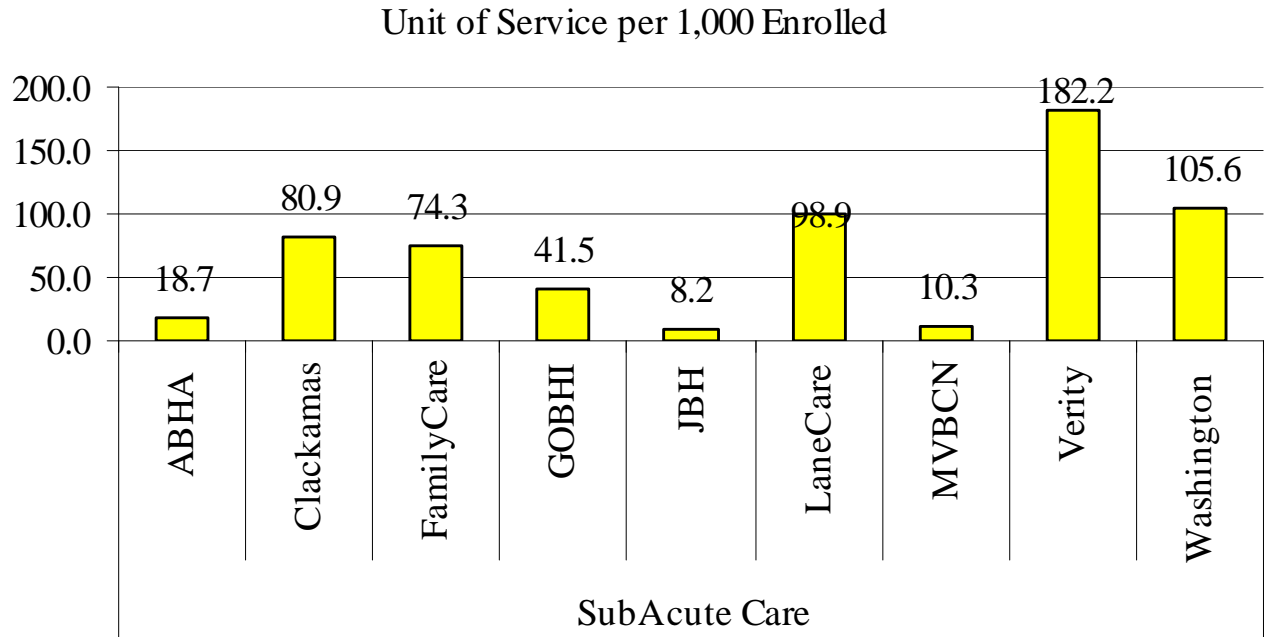
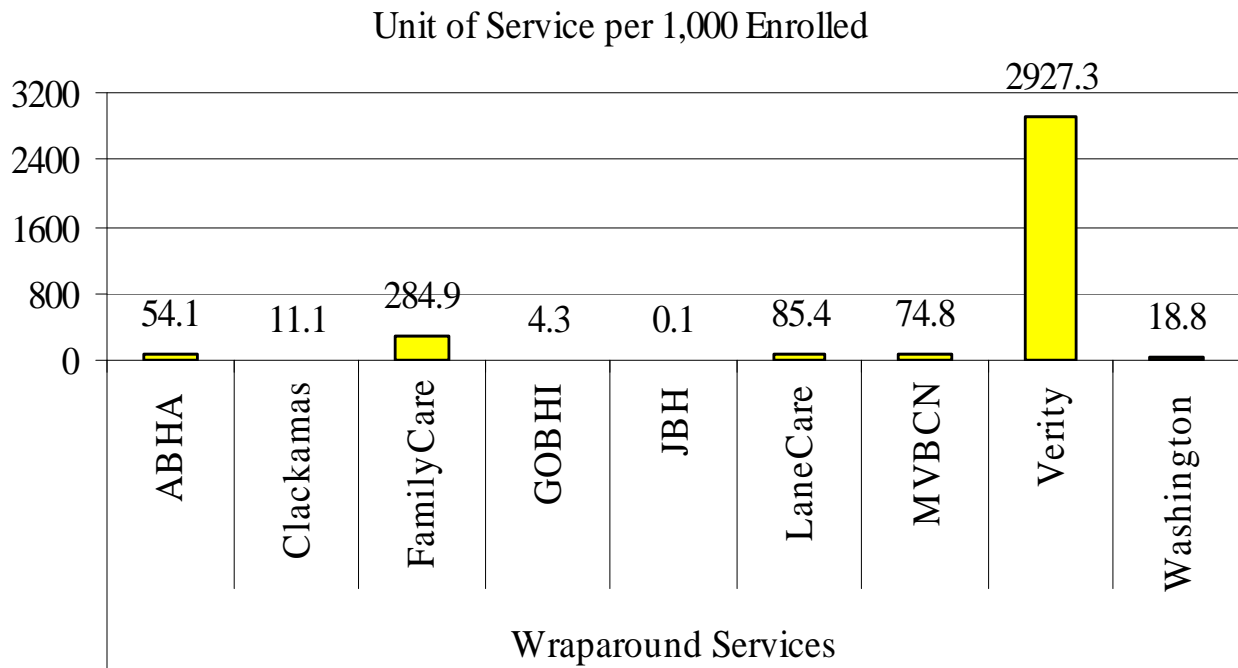


FIGURE 16: WRAP AROUND SERVICES BY MHO: 3RD QTR 2007 – CHILDREN 0-17



GLOSSARIES



GLOSSARY OF TERMS

Acute Care Services:

Services delivered to children admitted to a psychiatric unit at a regional acute care hospital.

Addiction and Mental Health Division (AMHD):

A Division of DHS responsible for the administration of addiction and mental health services for the State of Oregon.

Admissions:

Admission numbers reflect the unique admission of a child/children into a specific service (outpatient, PDTS, Acute care hospital etc.). The rate of admissions is one measure of demand for service and/or ability to access services.

Average Days of Service (ADOS):

The ADOS is based on the total number of days a child/children are in Psychiatric Day Treatment Services (PDTS). An episode of PDTS is defined as beginning on the first day of PDTS preceded by 30 or more days without PDTS. The ADOS is the total days of service across all episodes of service, divided by the number of service episodes.

Average Length of Stay (ALOS):

The ALOS is based on the total days of service divided by the unique members served.

Client Process Monitoring System (CPMS):

Database to monitor and track community services.

Encounter:

A contact or an admission into mental health services provided to specific child/children.

GLOSSARY OF TERMS

(Continued)

Enrolled (Enrollee):

An individual that is eligible for the Oregon Health Plan (OHP) and enrolled in an MHO.

Fee-For-Service (FFS):

Individuals who are eligible for the OHP, but are not enrolled with an MHO. This is also known as fee-for-service (FFS) or an "open card".

Mental Health Organization (MHO):

A Prepaid Health Plan under contract with DHS to provide Covered Services under the OHP Medicaid Demonstration Project and State Children's Health Insurance Program (SCHIP). MHOs can be FCHPs, CMHPs, private MHOs or combinations thereof.

Oregon Health Plan (OHP):

Oregon's health care reform effort consisting of a Medicaid Demonstration Project, State Children's Health Insurance Program, an individual insurance program for persons excluded from health insurance coverage due to pre-existing health conditions, and a group insurance program for small businesses. One objective of this reform effort includes universal coverage for Oregonians. In the context of this report, OHP refers to all individuals on FFS.

Outpatient Services:

The array of outpatient services includes: mental health assessments; co-occurring disorder assessments; individual and group therapy; medication management; parent training; case management and care coordination; crisis intervention; consultation to schools and other agencies; flexible services; specialized support service to families; and skills training. Outpatient services do NOT include day treatment.

GLOSSARY OF TERMS

(Continued)

Percentage Rate:

This is a general measure of access, but more related to utilization of services.

It is a percentage calculated by summing the unique enrollees seen during a given time period and dividing that number by the total enrollees for that time period. For example, if there is 10,000 enrollees statewide in a given month and during that same month 500 of those enrollees receive services, the percent of enrollees served is 5%.

Psychiatric Day Treatment Services (PDTs):

PDTs are comprehensive, interdisciplinary, non-residential community-based programs consisting of psychiatric treatment, family treatment and therapeutic activities integrated with an accredited education program.

Psychiatric Residential Treatment Services (PRTS):

PRTS are away from home, residential facility based psychiatric treatment services that occur in a nationally accredited and state certified facility and includes assessment and evaluation, regular residential and sub-acute care.

Secure Adolescent Inpatient Program (SAIP):

Beginning in March 2005, this program provides highly specialized intensive mental health services to children between the ages of 14-17, including crisis admits from the Oregon Youth Authority (OYA) and youth served under the Psychiatric Security Review Board (PSRB). SAIP is a secure 24-hour medically monitored service in the community operated by Trillium Family Services.

GLOSSARY OF TERMS

(Continued)

Secure Children's Inpatient Program (SCIP):

Beginning in March 2002, this program provides highly specialized intensive mental health services to children under the age of 13. SCIP is a secure 24-hour medically monitored service in the community operated by Trillium Family Services.

Service Category:

Service category is a descriptive grouping of service codes (BA, ECC, and CPT) that are similar procedurally.

Sub-Acute Care:

Psychiatric treatment under the clinical direction of a psychiatrist as an alternative to hospitalization for children who are not in the most acute phase of a mental condition, but who require a level of care higher than generally provided in a residential psychiatric treatment setting.

Unique Served:

Unduplicated number of individuals receiving mental health services.

Unique Encounters:

Unduplicated services received by an individual(s) within a specific time period. One individual may have had several services provided – each service would be part of the calculations.

Unit of Service:

A unit of service, for the purposes of this report, is an equal application of one (1) unit of service equaling 15 minutes. Thus 1 day of service will equal 96 units; 1 month of service will equal 2880 units of service.

GLOSSARY OF SERVICE CATEGORIES

Each of the procedure codes have been listed under each of their respective categories of service. The number in parentheses that follow each of the procedure codes is the number of 15 minute units of service. Not all of the categories are recognized in the previous section of the report due to the low use rate.

Assertive Community Treatment:

H0039 (1)

Assessment & Evaluation:

90801 (1); 90802 (4); 90887 (1); 96100 (4); 96101 (4); 99213 (1); 99222 (96); 99223 (96); 99231 (96); 99232 (96); 99233 (96); 99238 (2); 99239 (3); H0002 (1); H0031 (1)

Case Management:

90882 (1); T1016 (1)

Child & Family Team Meetings:

H0032 (1)

Consultation:

99244 (1); 99252 (1); 99254 (1)

Crisis Services:

H2011 (1); S9484 (4)

Day Treatment:

H0037 (96); H2012 (4)

Family Therapy:

90846 (1); 90847 (1); 90849 (1)

Group Therapy:

90853 (1); 90857 (1)

Individual Therapy:

90804 (2); 90806 (3); 90808 (6); 90810 (2); 90812 (3); 90814 (6); H0004

Individual Therapy with Medication Management:

90805 (2); 90807 (3); 90809 (6); 90811 (2); 90813 (3); 90815 (6)

GLOSSARY OF SERVICE CATEGORIES

(Continued)

Interpretive Services:

T1013 (1)

Level of Need Determination:

T1023 (1)

Medication Management:

90862 (1); H0033 (1); H0034 (1); H2010 (1)

MST (Multi-Systemic Therapy for Juveniles):

H2033 (1)

Outpatient Therapy:

H0036 (1); H2023 (1)

PRTS – A & E:

H0018 (96)

PRTS – Residential:

H0019 (2880)

Respite Care:

H0045 (96); S5151 (96); S9125 (96); T1005 (1)

Skills Training:

G0176 (3); G0177 (3); H2014 (1); H2032 (1)

Sub-Acute Care:

H2013 (96)

Treatment Foster Care:

S5145 (96); S5146 (2880)

Wraparound Services:

H0038 (1); H2021 (1); H2022 (96); H2027 (1)