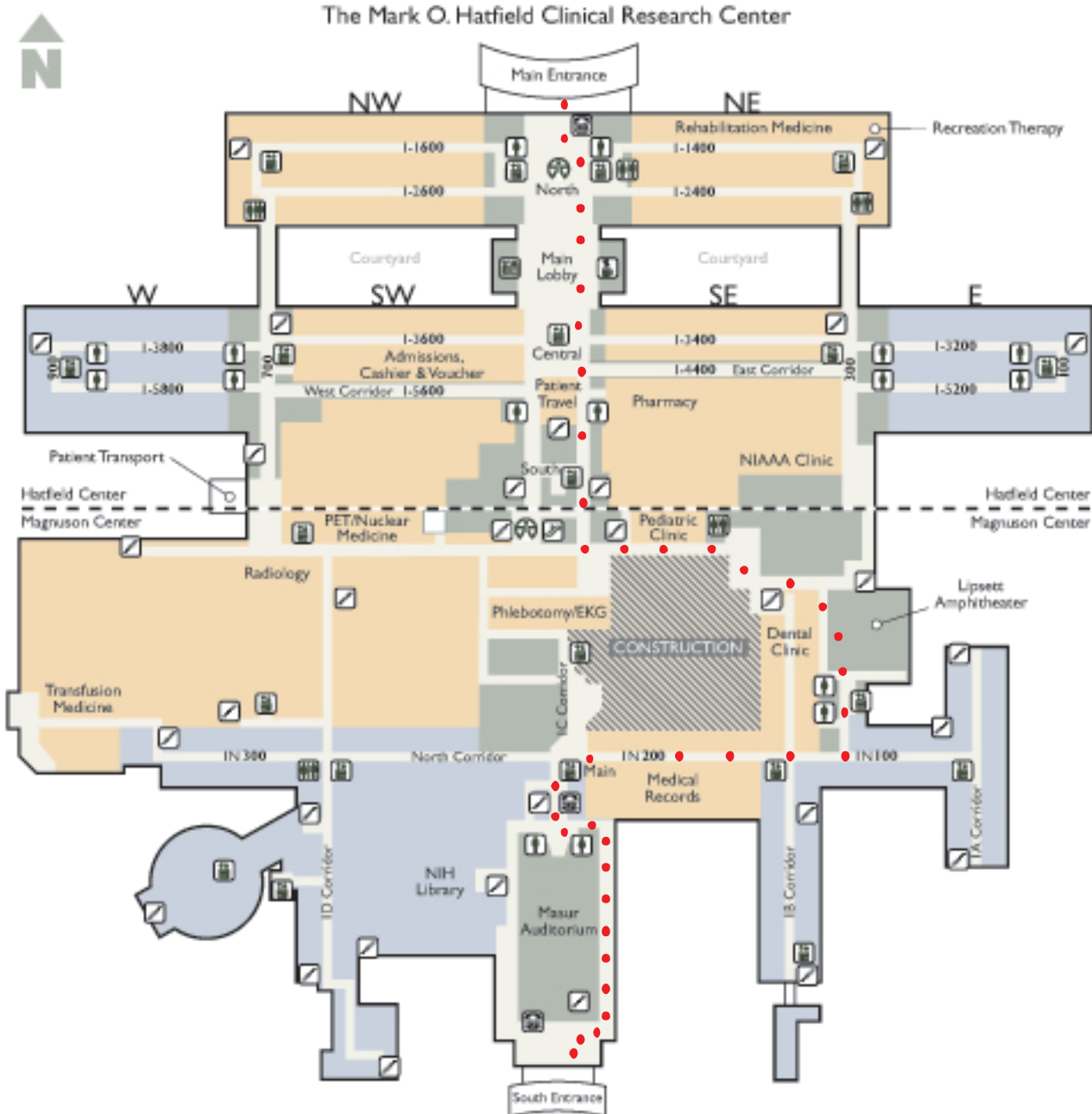


1st Floor



The Warren Grant Magnuson Clinical Center

- | | | | |
|--------------------|------------|-------------|--|
| You Are Here | Restrooms | Hospitality | |
| Patient Areas | Stairs | TTY Phone | |
| Research/Lab Areas | Elevators | Coffee Shop | |
| AED Defibrillator | Escalators | Gift Shop | |

Directions to Lipsett Amphitheater

From the North lobby entrance:

Walk through the Atrium, passing Admissions on your right or the Pharmacy on your left, as well as several sets of elevators. Continue straight through the sliding glass doors. The Phlebotomy/EKG area will be directly in front of you. Make a left and continue down the corridor, passing the pediatric clinic on your left. Continue following the hallway as it turns diagonally to the right, then straight for a few feet. After you pass the dental clinic on your right, turn right into Lipsett Amphitheater.

From the South lobby entrance:

Walk down either the hallway to your left or the hallway to your right. When the two hallways converge, you are standing in front of Masur Auditorium. Pass main elevators and turn right onto the North corridor. Walk by Medical Records, and then turn left at the second hallway. Lipsett Amphitheater is straight ahead.