

Census Data for Watershed Planning

How to Find & Apply Demographic Data

Ken Genskow /
Katherine White

University of Wisconsin-Madison/Extension

American FactFinder: Gateway to Census Bureau data

(<http://factfinder.census.gov>)

Decennial Census

- Point-in-time data
- Different geographic scales
- Long-form provides detailed information on economic, social and housing based on a sample of the population

American Community Survey (ACS)

- Will replace the census long-form
- Large, continuous survey (3 Million/yr -- every year -- every county)
- Moving-average (5 yr period)
- Large Popns since 2005;
 - >20k by 2008;
 - all by 2010

American FactFinder: Query Result

Nation

Region

Division

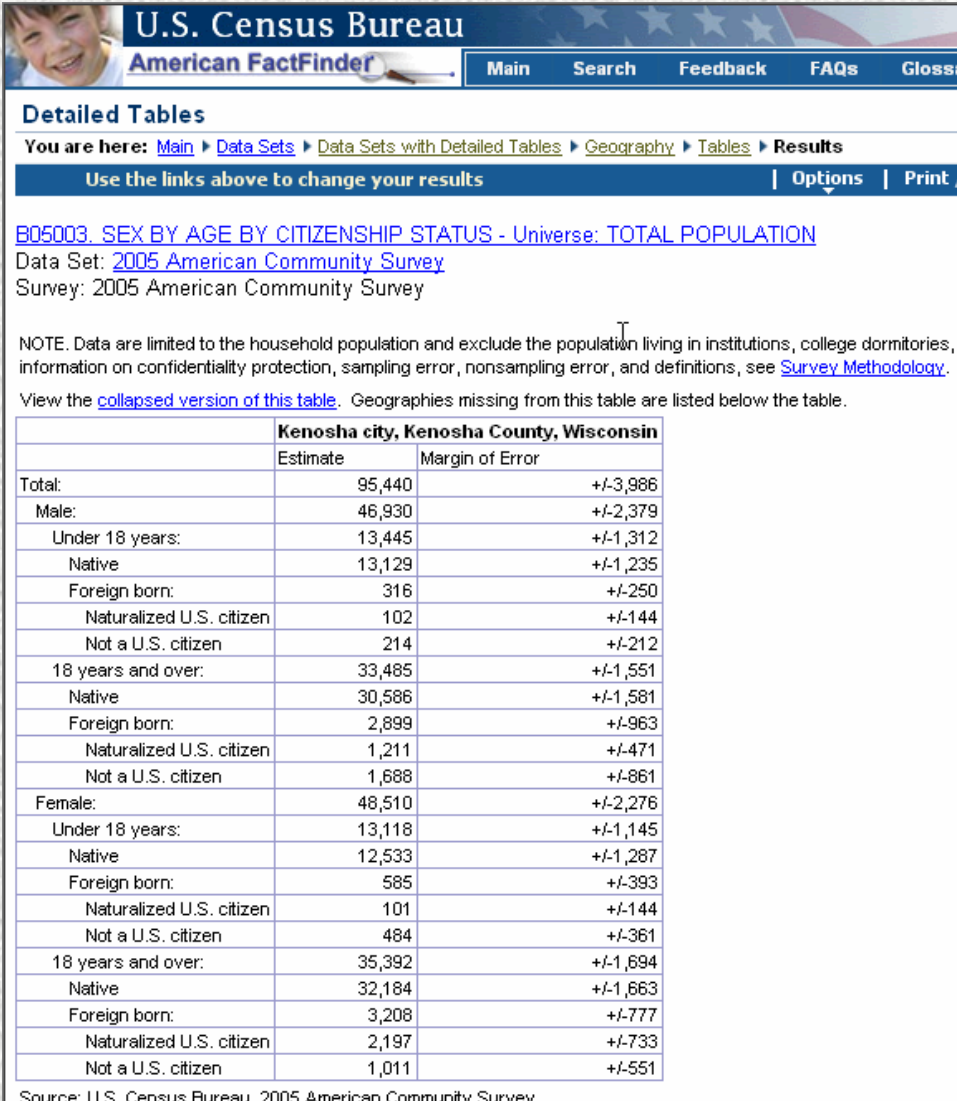
State

Counties

Census Tract

Block Group

Block



U.S. Census Bureau
American FactFinder

Main Search Feedback FAQs Glossary

Detailed Tables

You are here: [Main](#) > [Data Sets](#) > [Data Sets with Detailed Tables](#) > [Geography](#) > [Tables](#) > [Results](#)

Use the links above to change your results | [Options](#) | [Print](#)

[B05003. SEX BY AGE BY CITIZENSHIP STATUS - Universe: TOTAL POPULATION](#)
Data Set: [2005 American Community Survey](#)
Survey: 2005 American Community Survey

NOTE: Data are limited to the household population and exclude the population living in institutions, college dormitories, and other noninstitutional quarters. For more information on confidentiality protection, sampling error, nonsampling error, and definitions, see [Survey Methodology](#).

View the [collapsed version of this table](#). Geographies missing from this table are listed below the table.

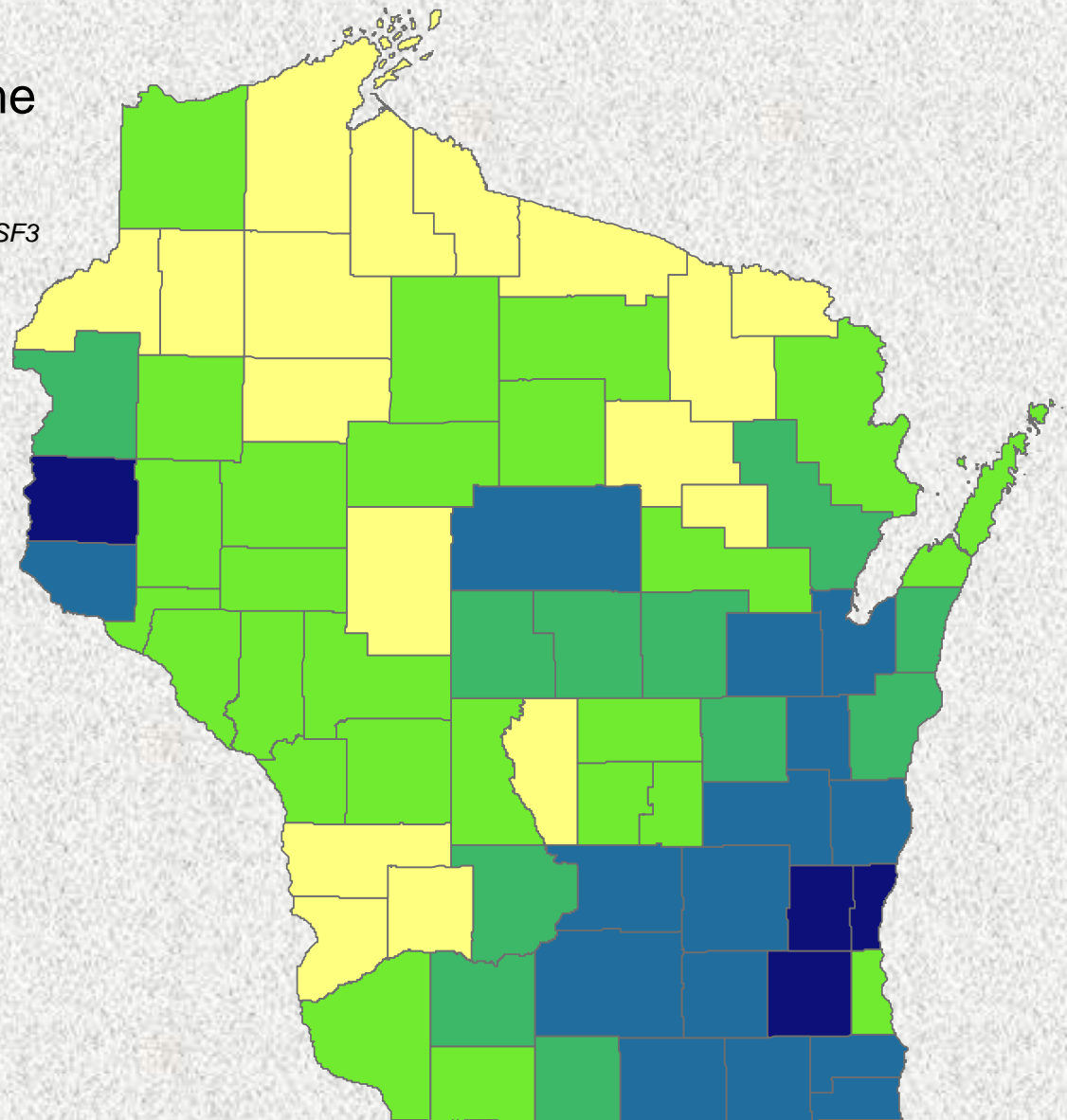
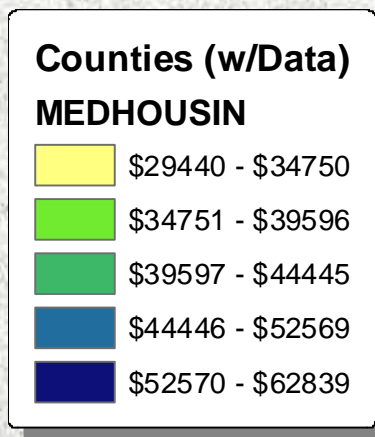
| Kenosha city, Kenosha County, Wisconsin | | |
|--|----------|-----------------|
| | Estimate | Margin of Error |
| Total: | 95,440 | +/-3,986 |
| Male: | 46,930 | +/-2,379 |
| Under 18 years: | 13,445 | +/-1,312 |
| Native | 13,129 | +/-1,235 |
| Foreign born: | 316 | +/-250 |
| Naturalized U.S. citizen | 102 | +/-144 |
| Not a U.S. citizen | 214 | +/-212 |
| 18 years and over: | 33,485 | +/-1,551 |
| Native | 30,586 | +/-1,581 |
| Foreign born: | 2,899 | +/-963 |
| Naturalized U.S. citizen | 1,211 | +/-471 |
| Not a U.S. citizen | 1,688 | +/-861 |
| Female: | 48,510 | +/-2,276 |
| Under 18 years: | 13,118 | +/-1,145 |
| Native | 12,533 | +/-1,287 |
| Foreign born: | 585 | +/-393 |
| Naturalized U.S. citizen | 101 | +/-144 |
| Not a U.S. citizen | 484 | +/-361 |
| 18 years and over: | 35,392 | +/-1,694 |
| Native | 32,184 | +/-1,663 |
| Foreign born: | 3,208 | +/-777 |
| Naturalized U.S. citizen | 2,197 | +/-733 |
| Not a U.S. citizen | 1,011 | +/-551 |

Source: U.S. Census Bureau, 2005 American Community Survey

Median Household Income

Counties

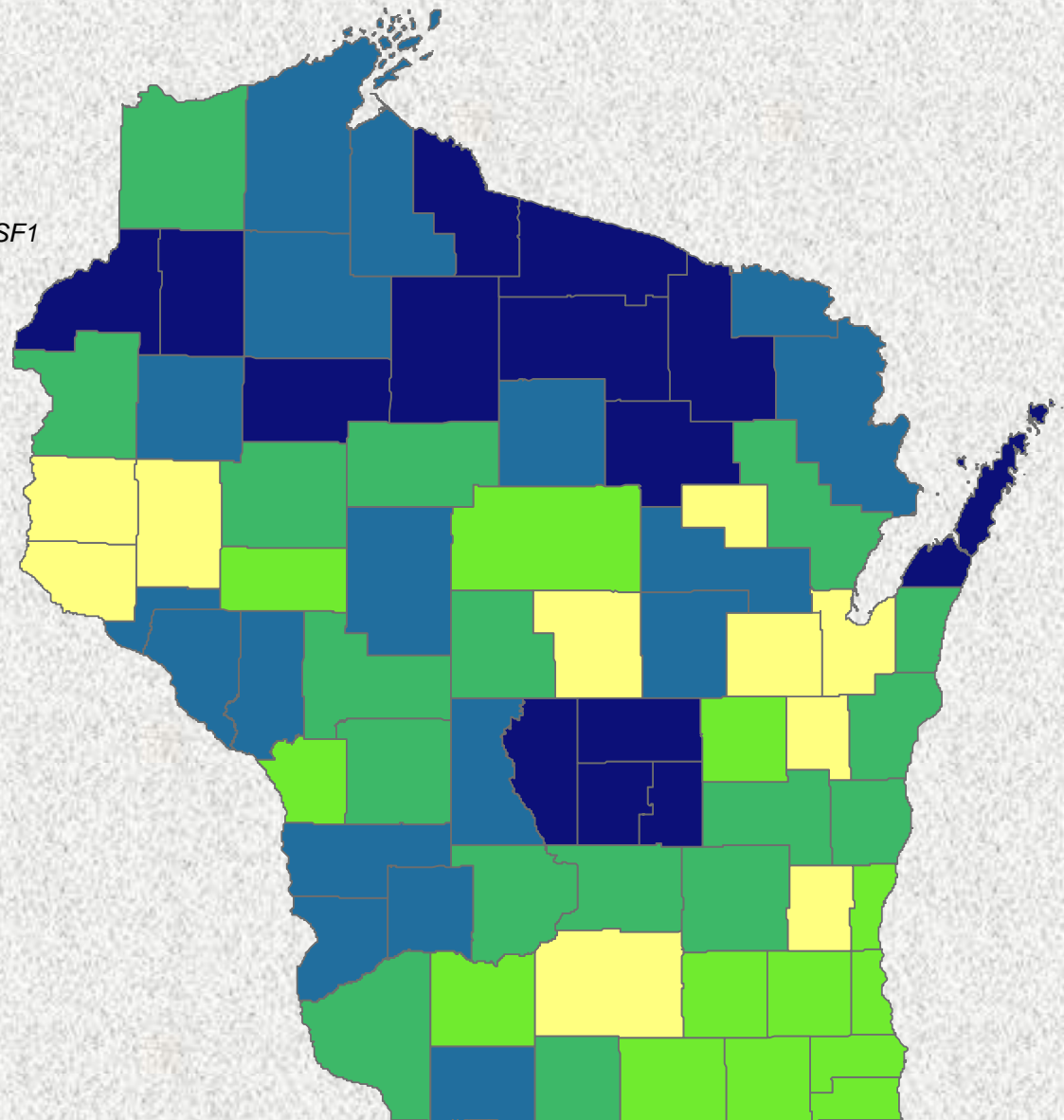
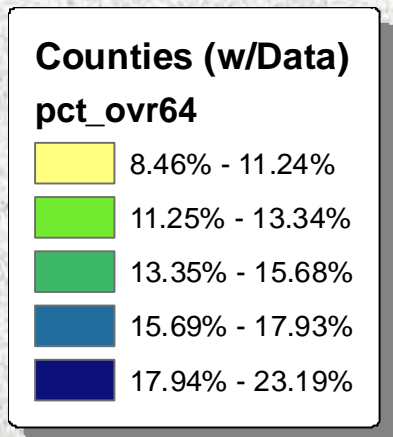
Source: 2000 Census of Population and Housing, SF3



Percent Age 65 & Over

Counties

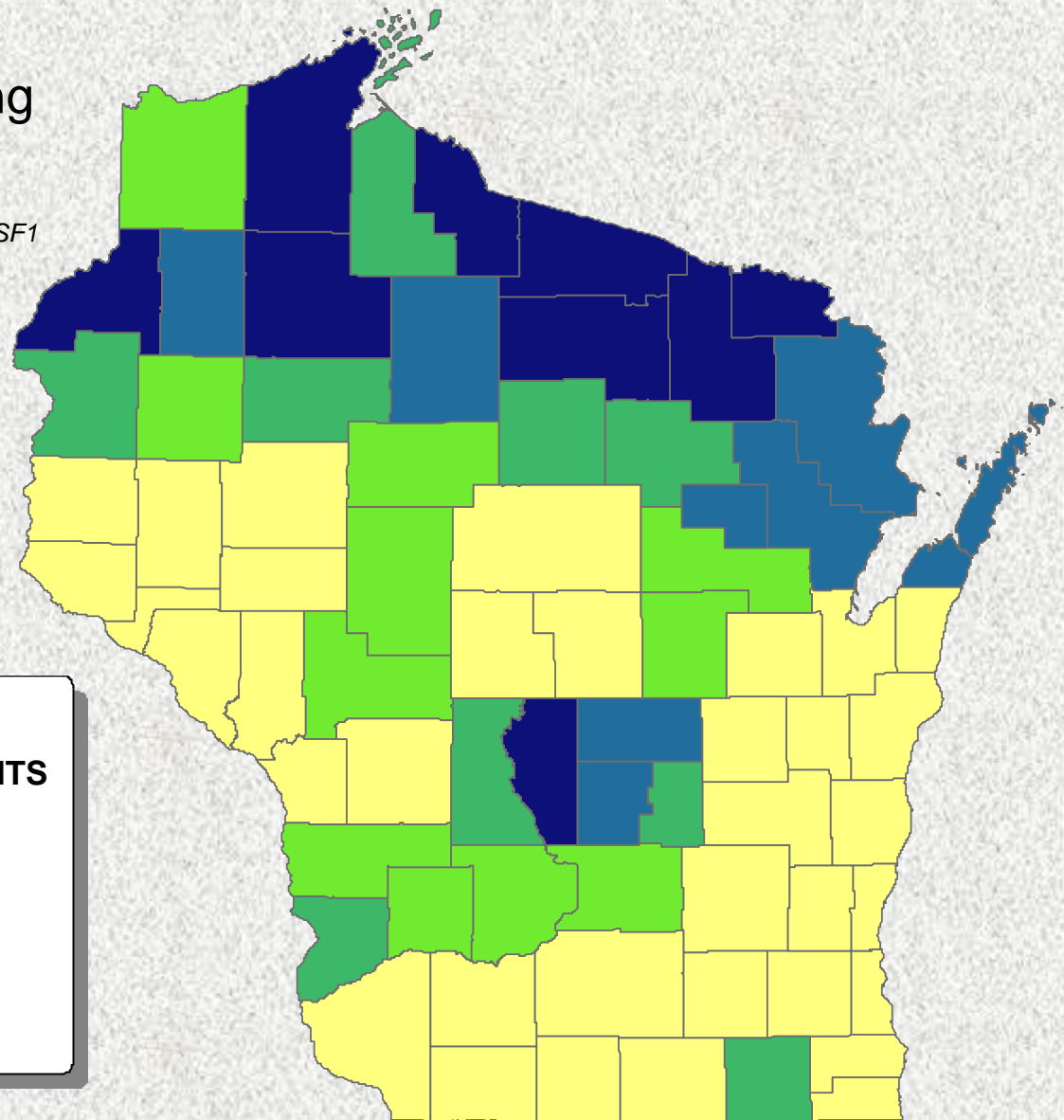
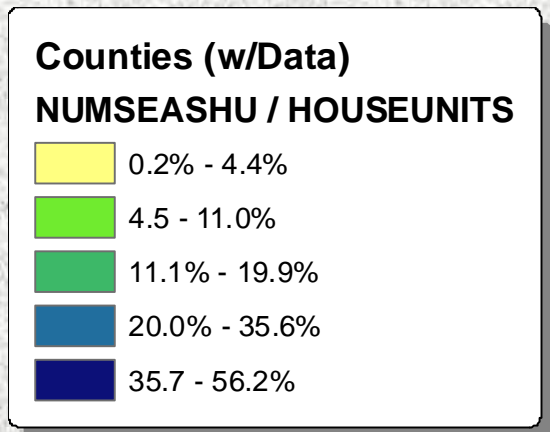
Source: 2000 Census of Population and Housing, SF1



Percent Seasonal Housing

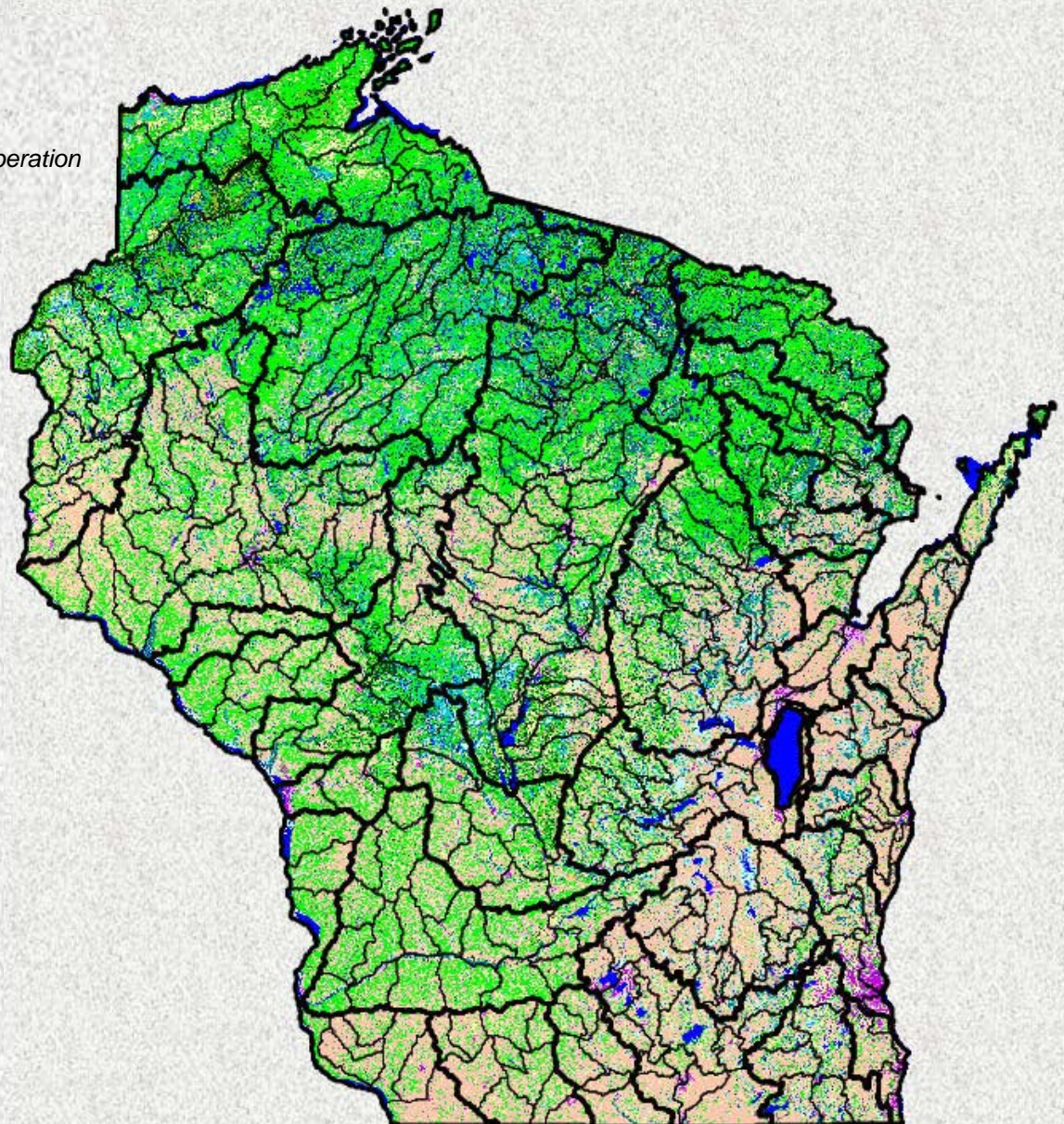
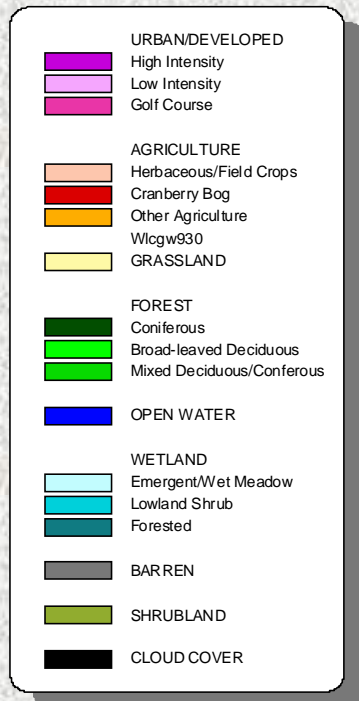
Counties

Source: 2000 Census of Population and Housing, SF1



Wisconsin Land Cover

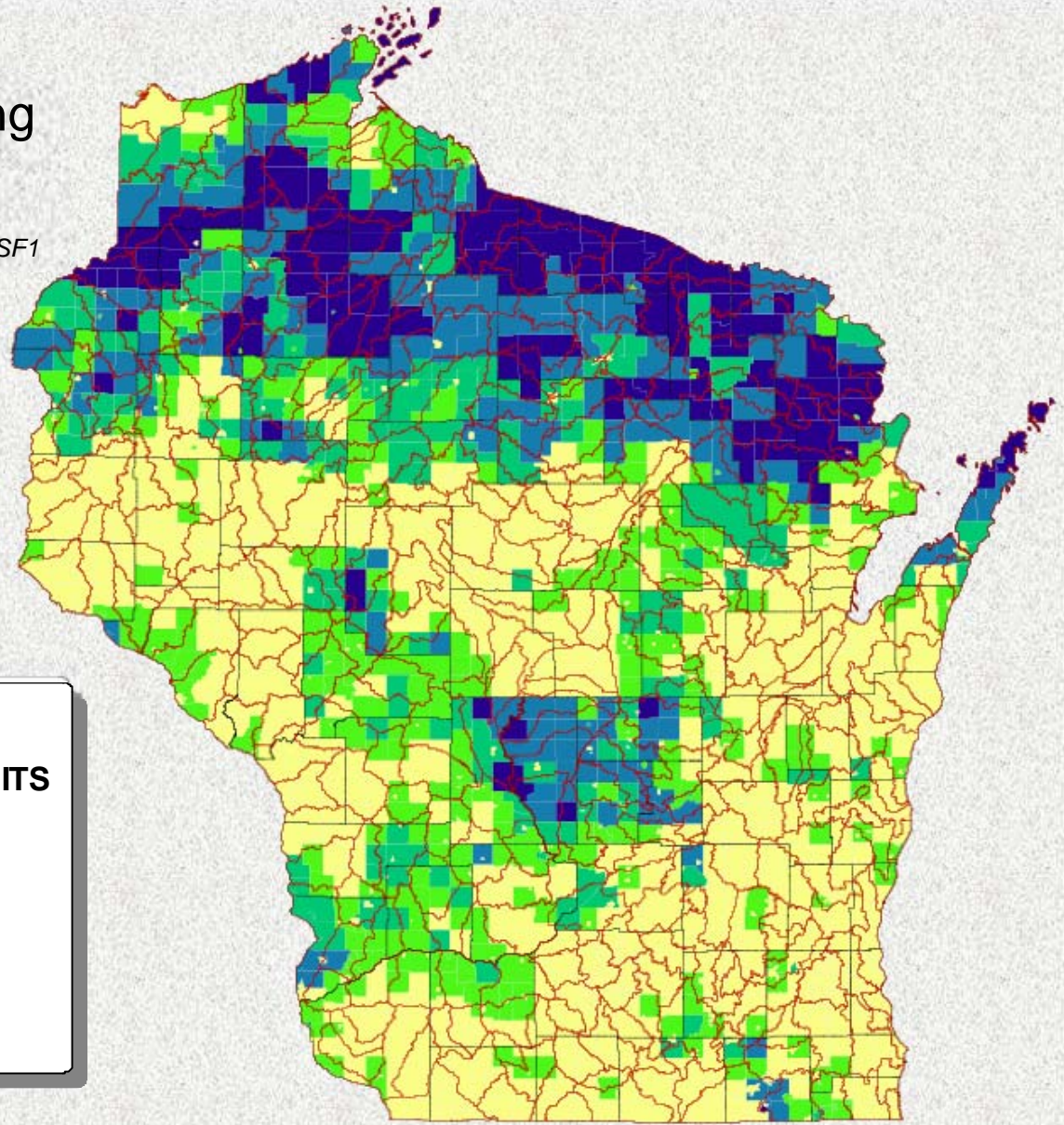
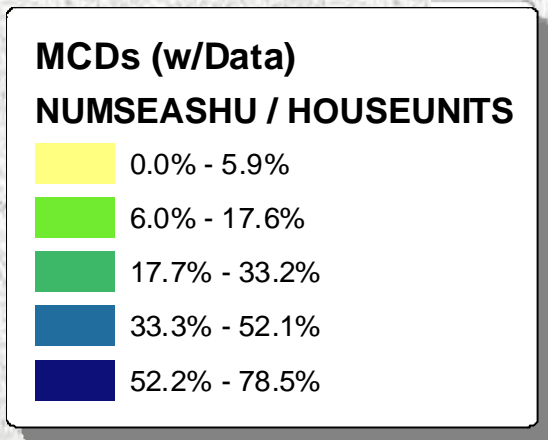
Source: *Wisconsin Initiative for Statewide Cooperation on Landscape and Data 1993 (WISCLAND)*



Percent Seasonal Housing

Minor Civil Divisions

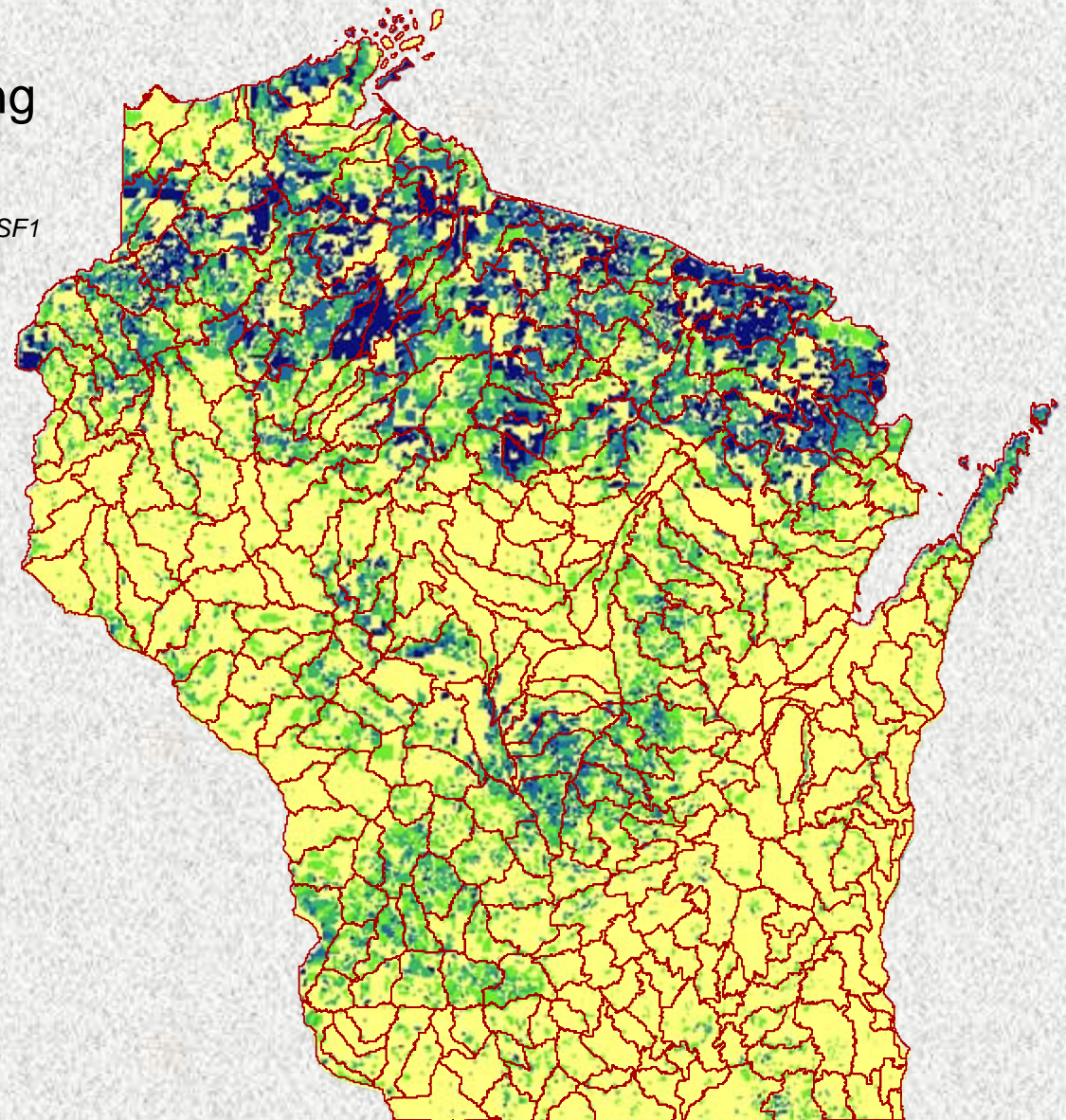
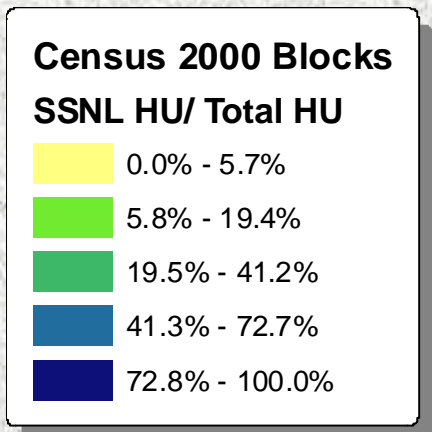
Source: 2000 Census of Population and Housing, SF1



Percent Seasonal Housing

Census Blocks

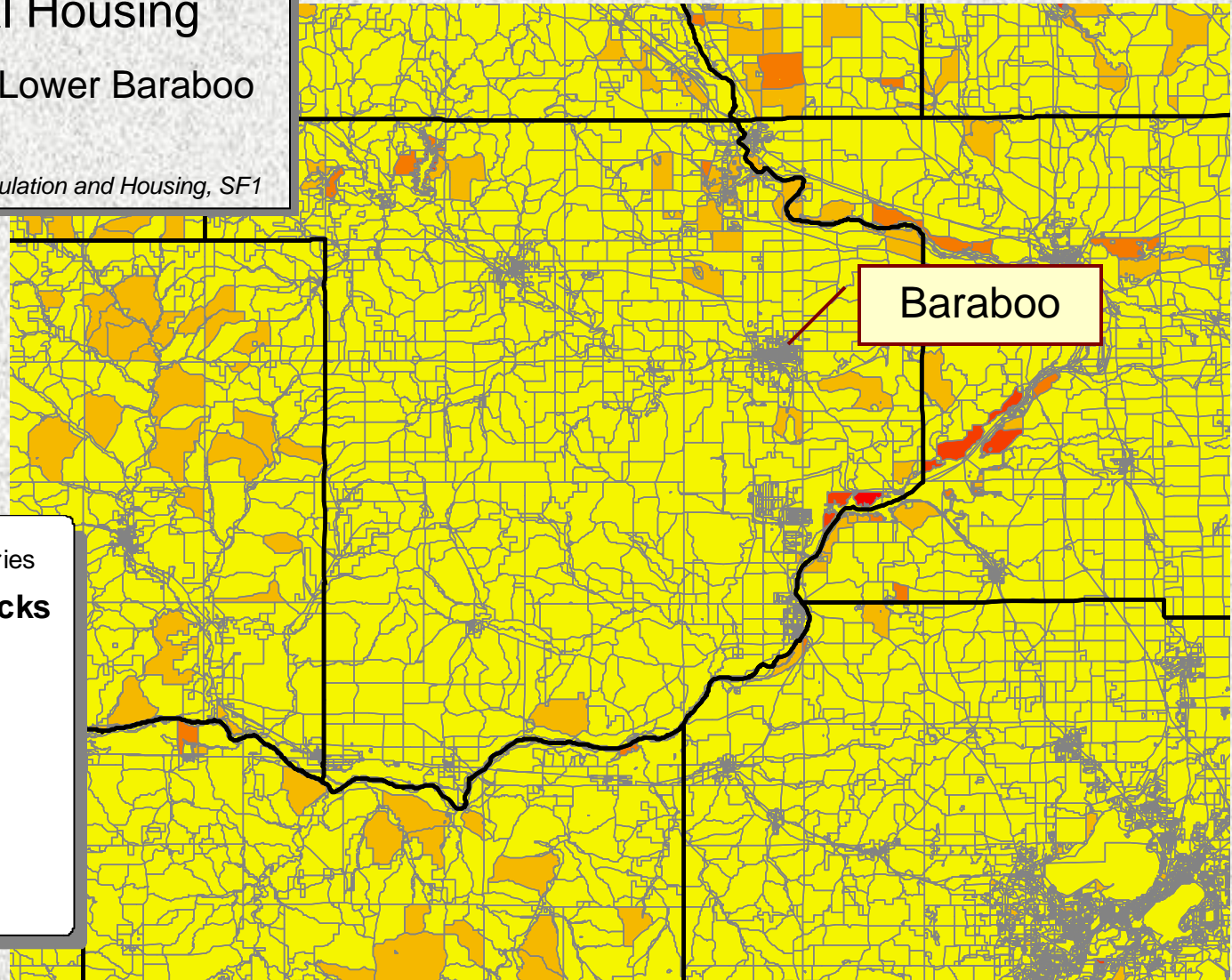
Source: 2000 Census of Population and Housing, SF1



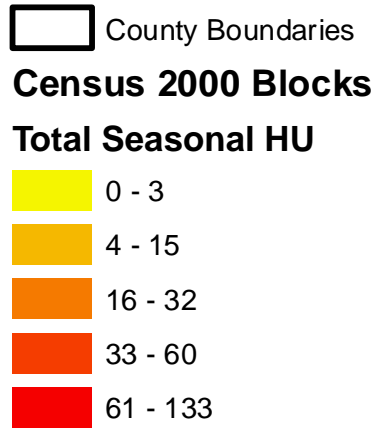
Total Seasonal Housing

Census Blocks in Lower Baraboo River Watershed

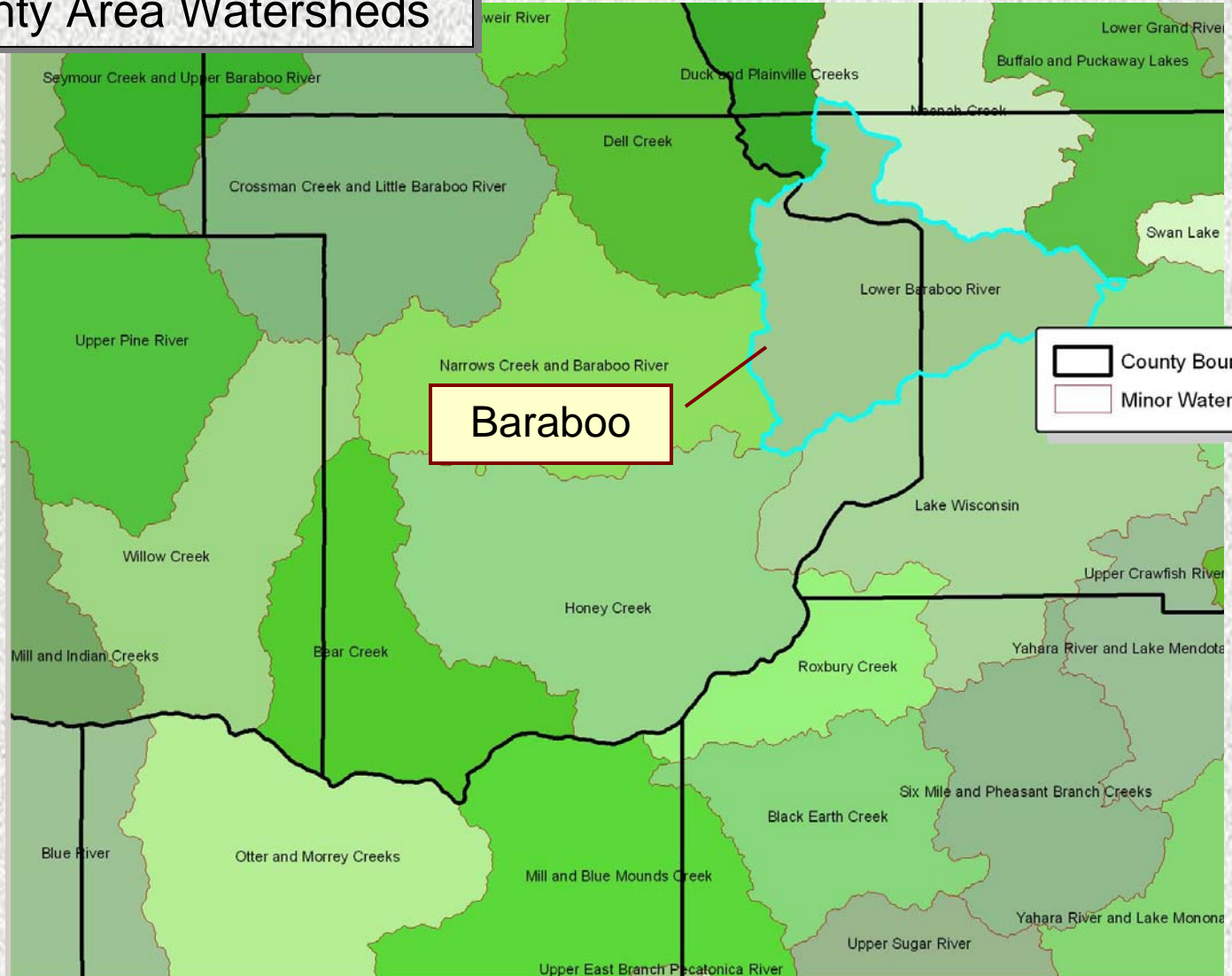
Source: 2000 Census of Population and Housing, SF1



Baraboo



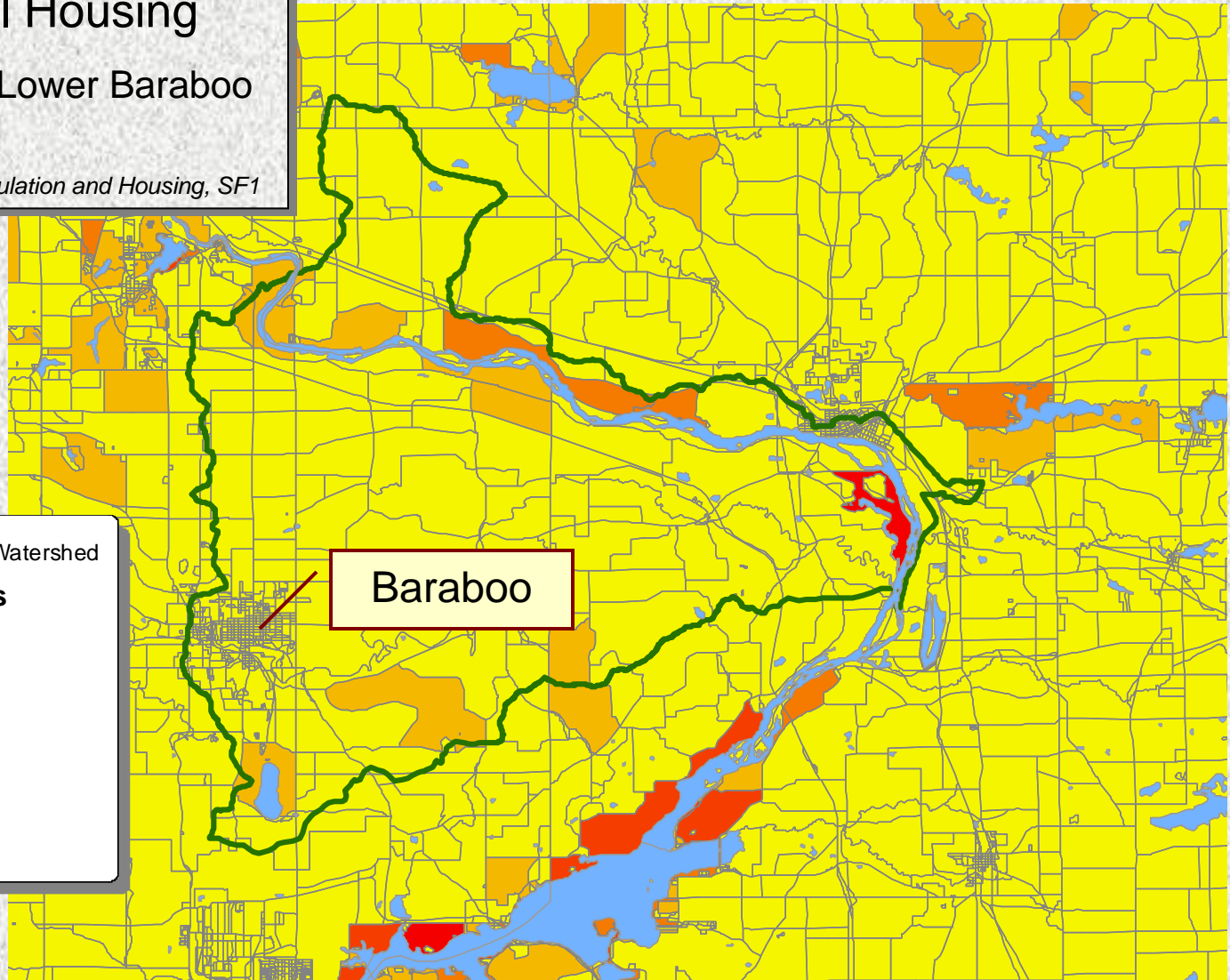
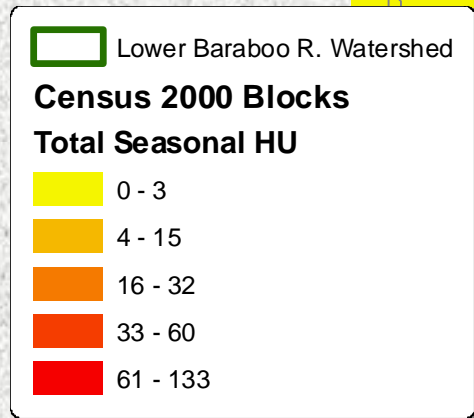
Sauk County Area Watersheds



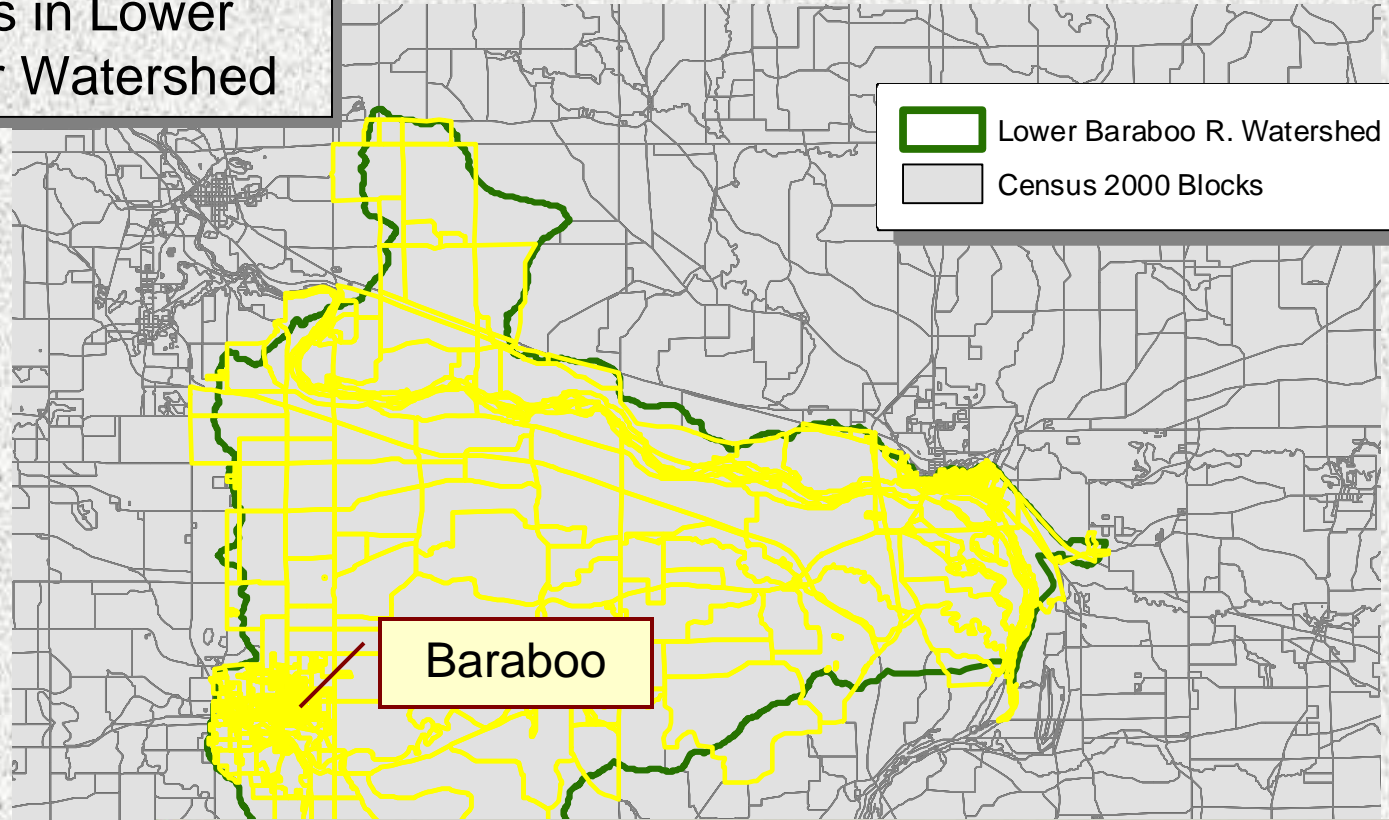
Total Seasonal Housing

Census Blocks in Lower Baraboo River Watershed

Source: 2000 Census of Population and Housing, SF1



Census Blocks in Lower Baraboo River Watershed



Legend:

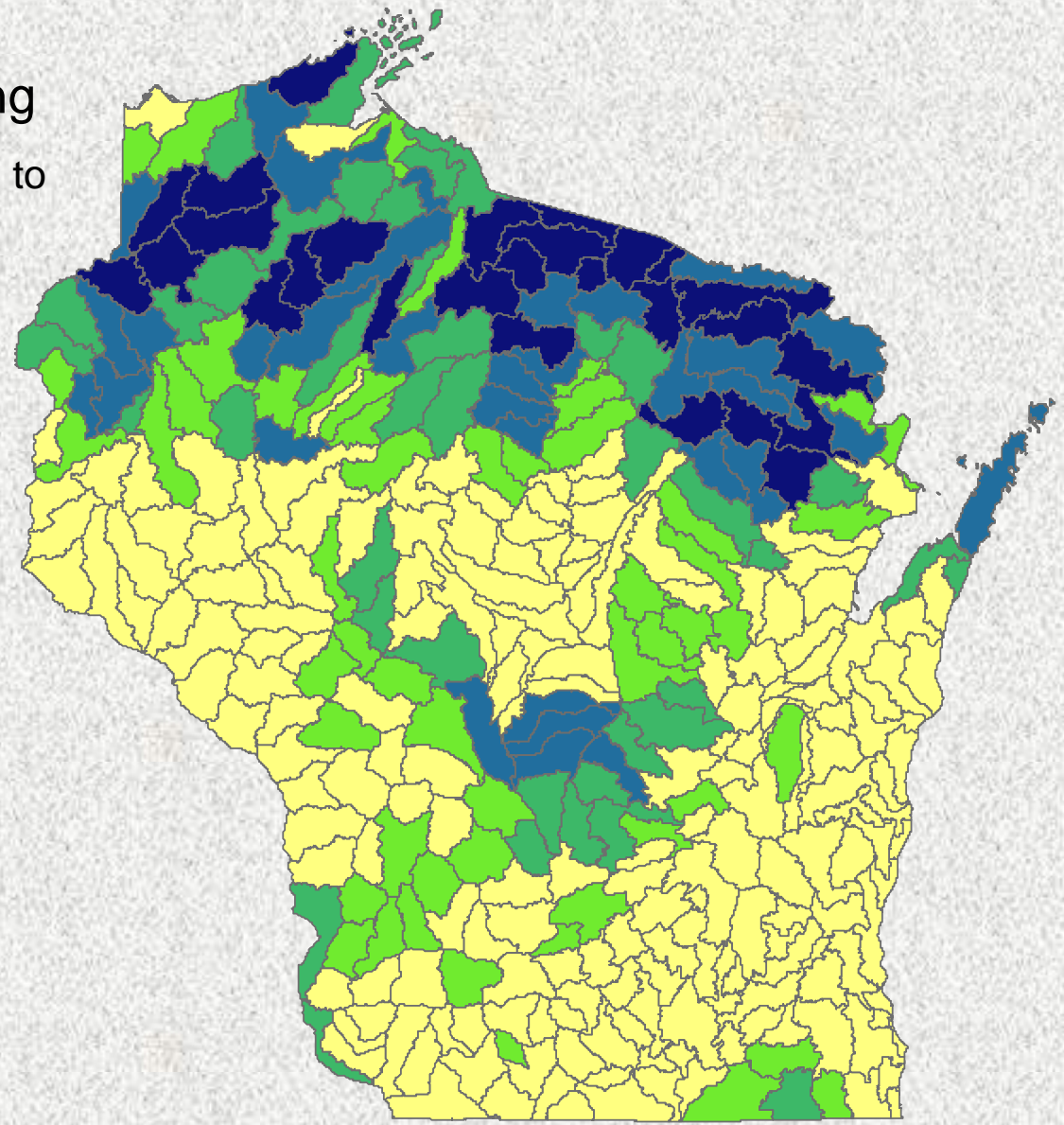
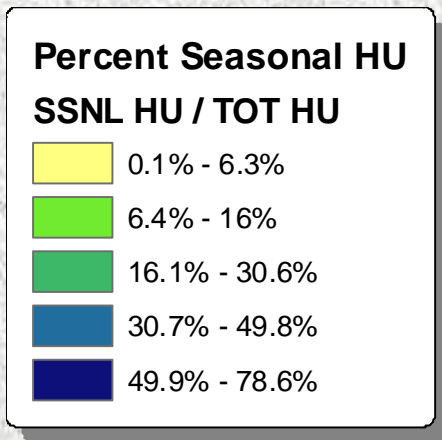
- Lower Baraboo R. Watershed
- Census 2000 Blocks

Attributes of Census 2000 Blocks selection

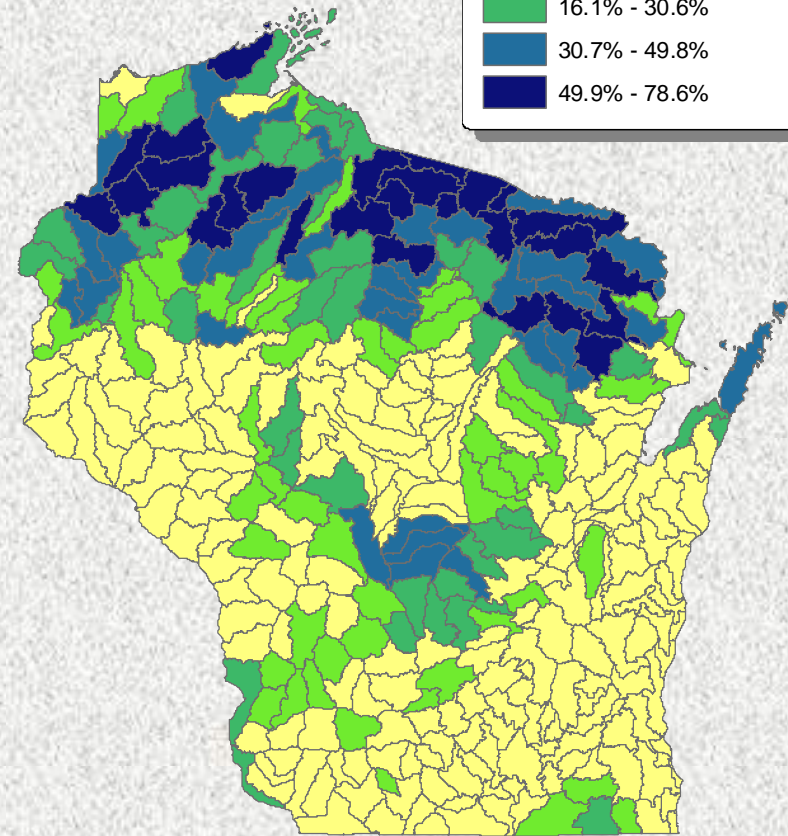
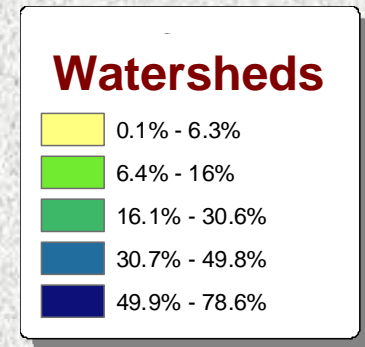
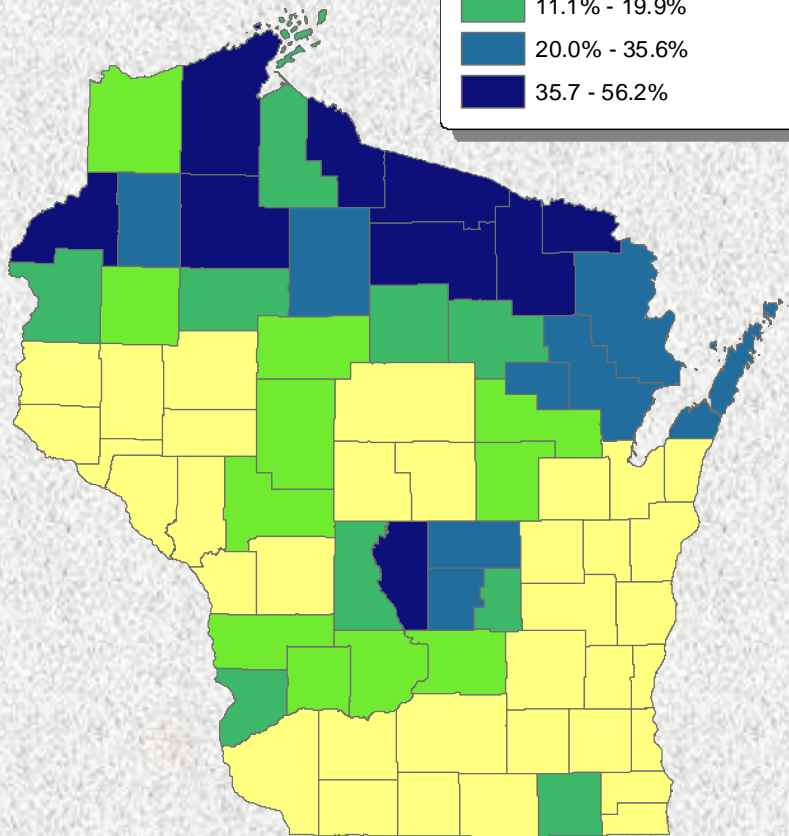
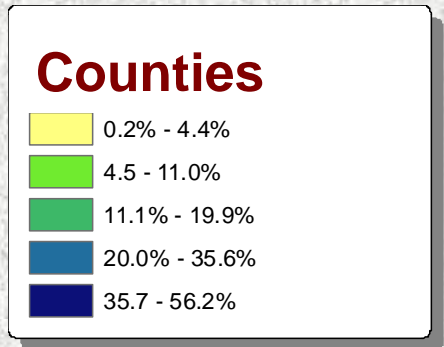
| SF1_blk_extract2.NAME | SF1_blk_extract2.A | SF1_blk_ext | SF1_blk_ex | SF1_blk_ex | SF1_blk_extract |
|-----------------------|--------------------|-------------|------------|------------|-----------------|
| Block 3053 | 19234 | 49 | 9 | 18.367347 | 4.000000 |
| Block 2040 | 123067 | 65 | 4 | 6.153846 | 4.166667 |
| Block 2055 | 24502 | 63 | 4 | 6.349206 | 4.166667 |
| Block 2021 | 21304 | 48 | 5 | 10.416667 | 4.347826 |
| Block 5037 | 465062 | 62 | 3 | 4.83871 | 4.545455 |
| Block 6026 | 9968264 | 209 | 10 | 4.784689 | 4.705882 |
| Block 2070 | 36172 | 58 | 4 | 6.896552 | 4.761905 |

Percent Seasonal Housing

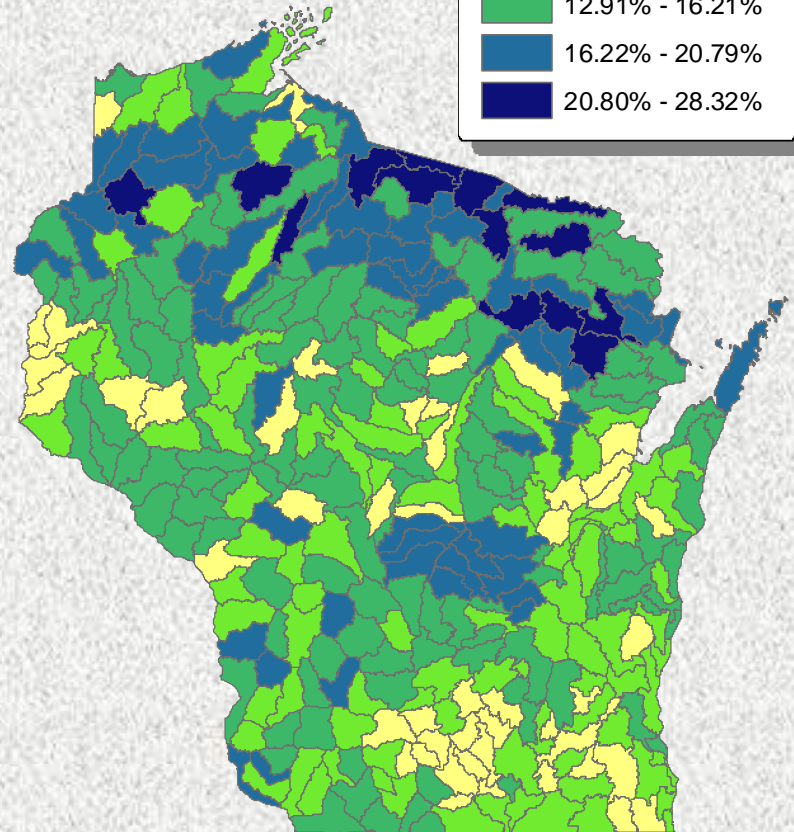
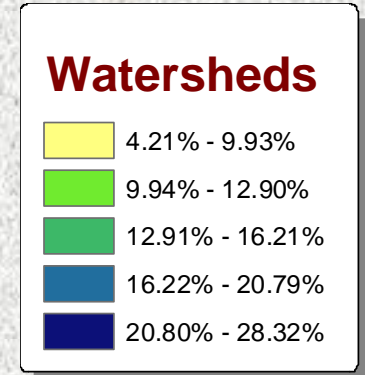
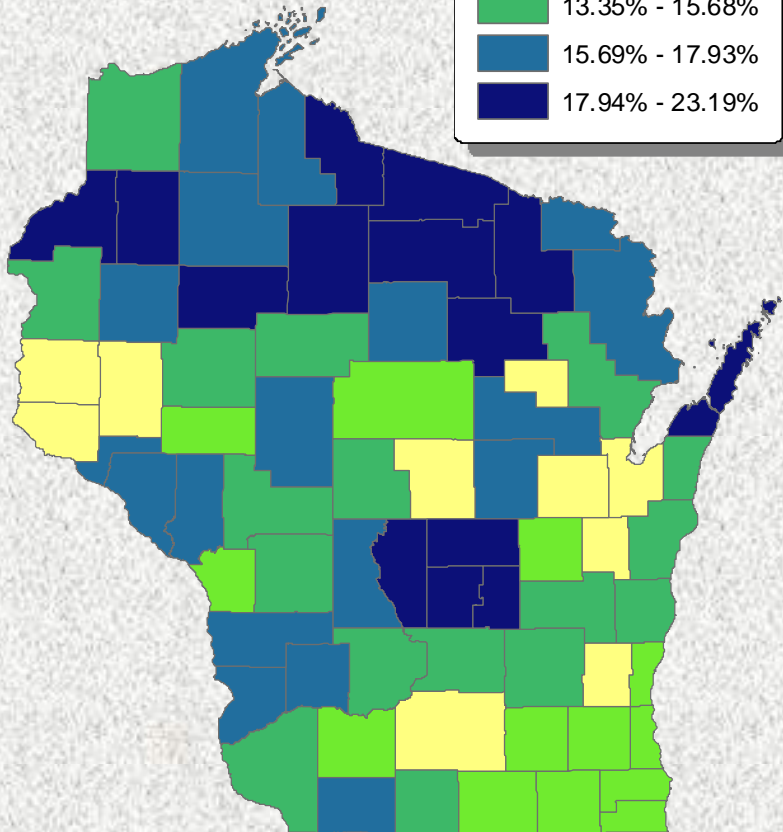
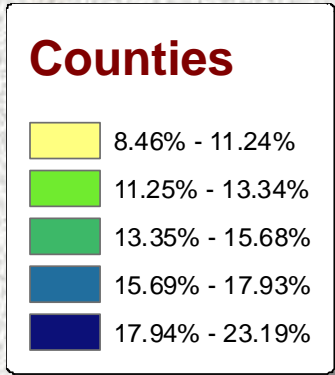
Census Block Data Aggregated to
Minor Watersheds



Percent Seasonal Housing



Percent Age 65 & Over



GetFacts (http://www.getfacts.wisc.edu/)

The screenshot displays the GetFacts web application interface. At the top, there are navigation links: Introduction, Sources, Interpretation, Application, and Resources. The main heading is "GetFacts" with the URL "http://www.getfacts.wisc.edu/". Below this is a browser window showing the website's URL and search bar.

The interface features a "Navigation and Extraction Tools" section with a "Zoom to County" dropdown and various icons for map navigation and data extraction. Below this is a map of Wisconsin showing county boundaries. The map is color-coded by population density, with darker shades of pink and red indicating higher population density.

On the right side, there is a "Select Local Characteristics:" panel with three dropdown menus for "Census SF1 Variables:", "Census SF3 Variables:", and "Other Variables:". Below these is a "Level of Geography:" dropdown menu set to "--None--" and a "Create Thematic Map" button. There are also instructions for extracting shapefiles, excel files, and downloading processed TIGER data.

The "Legend:" panel on the right lists various geographic levels and their corresponding colors:

- Census Geographies
 - Counties
 - Municipalities
 - Tracts
 - Block Groups
 - 0 to 26.6
 - 26.7 to 244.3
 - 244.4 to 1203.5
 - 1203.6 to 2611.6
 - 2611.7 and Over
 - School District Boundaries
 - Tribal Land Boundaries
 - Zip Code Boundaries

University of Wisconsin-Madison Applied Population Laboratory (APL) www.getfacts.wisc.edu

- **Dan Veroff**, Director (dlveroff@ssc.wisc.edu)
General Inquiries
- **Jim Beaudoin**, Information Processing Consultant
(jmbeaudoin@ssc.wisc.edu)
GetFacts
- **Dave Long**, Associate Researcher (dlong@ssc.wisc.edu)
Watershed Overlays