

**South Carolina 1 CROP
ROMs**
(Resource Offering/Removal Maps)

October 2006

Prepared by:

Catherine M. Mater
Mater Engineering, Ltd.
101 SW Western Blvd.
Corvallis, Oregon 97333
Tel: 541-753-7335 Fx: 541-752-2952
mater@mater.com
www.mater.com

**South Carolina 1 CROP
ROMs
(Center point: Foreston)**

October 2006

Table of Contents

	<i>Page</i>
South Carolina All Agencies	4
All Agencies Location Map	5
NEPA Overviews	6
NEPA All Agencies	6
ROMs by Species.....	7
a) <u>Loblolly Pine Overview</u>	8
b) Loblolly Pine Location Map	9
c) Diameter by Year	10
d) Source Specific:	
<i>Francis Marion NF:</i>	11
<i>SC Forestry Commission:</i>	11
<i>Shaw AFB:</i>	12
a) <u>Slash Pine Overview</u>	13
b) Slash Pine Location Map	14
c) Diameter by Year	15
d) Source Specific:	
<i>SC Forestry Commission:</i>	16
<i>Shaw AFB:</i>	16
a) <u>Gum Species Overview</u>	17
b) Gum Species Location Map	18
c) Diameter by Year	19
d) Source Specific:	
<i>SC Forestry Commission:</i>	20
a) <u>Other Hardwoods Overview</u>	21
b) Other Hardwoods Location Map.....	22
c) Diameter by Year	23
d) Source Specific:	
<i>SC Forestry Commission:</i>	24

Table of Contents

	<i>Page</i>
a) <u>Red Maple Overview</u>	25
b) Red Maple Location Map.....	26
c) Diameter by Year	27
d) Source Specific:	
<i>SC Forestry Commission:</i>	28
a) <u>Oak Species Overview</u>	29
b) Oak Species Location Map	30
c) Diameter by Year	31
d) Source Specific:	
<i>SC Forestry Commission:</i>	32
a) <u>Bald Cypress Overview</u>	33
b) Bald Cypress Location Map.....	34
c) Diameter by Year	35
d) Source Specific:	
<i>SC Forestry Commission:</i>	36
a) <u>Longleaf Pine Overview</u>	37
b) Longleaf Pine Location Map.....	38
c) Diameter by Year	39
d) Source Specific:	
<i>Shaw AFB:</i>	40
a) <u>Scrub Oak Overview</u>	41
b) Scrub Oak Location Map	42
c) Diameter by Year	43
d) Source Specific:	
<i>Shaw AFB:</i>	44

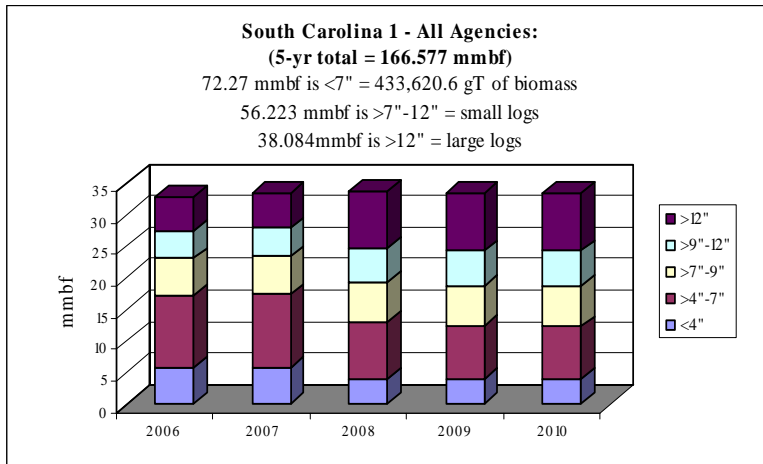
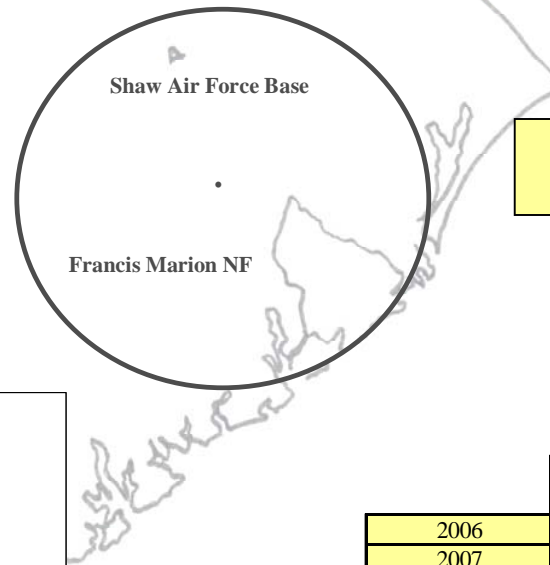
South Carolina 1: All Agencies CROP offering/removal '06 – '10
(gT = 433,620.6 / S = 56.223 mmbf / L = 38.084 mmbf)

gT = green tons (up to 7" dbh)
 S = small log mmbf (>7"-12" dbh)
 L = large log mmbf (>12" dbh)

SC Forestry Comm.: 24%
(gT = 15,466 / S = 13.01 / L = 24.01)

Francis Marion NF: 75%
(gT = 414,600 / S = 41.9 / L = 13.8)

Shaw AFB: 1%
(gT = 3,554.5 / S = 1.312 / L = .269)



	gT	mmbf	
	Biomass	Small Log	Large Log
2006	103293.2143	10.20225	5.403
2007	104143.1743	10.46059	5.5192
2008	77848.23429	11.77538	8.914
2009	74941.17429	11.7654	9.08117
2010	73394.85429	12.01945	9.1664
Totals	433620.6514	56.22307	38.08377
%	43%	34%	23%
mmbf	72.27010857		

166.5769486

South Carolina 1: All Agencies CROP offering/removal '06 – '10
(gT = 433,620.6 / S = 56.223 mmbf / L = 38.084 mmbf)

Francis Marion NF:

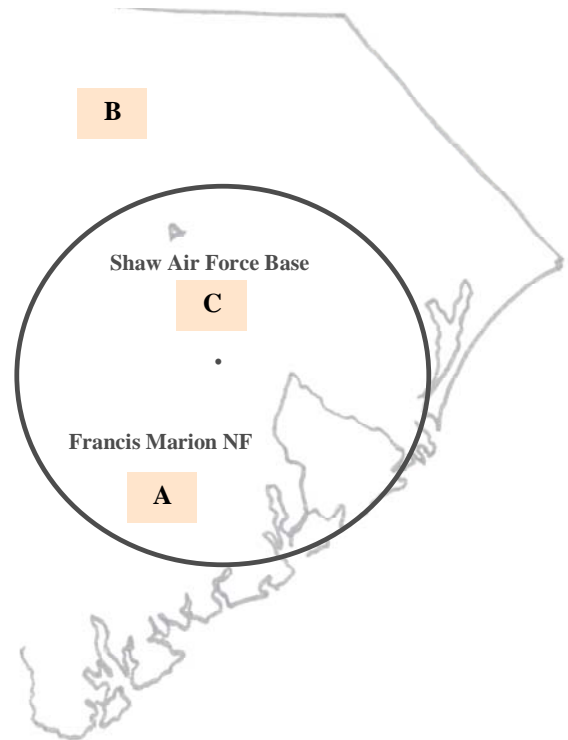
A Francis Marion NF (124.8 mmbf)

South Carolina Commission:

B SC Forestry Commission (39.604 mmbf)

Shaw AFB:

C Shaw AFB (2.173 mmbf)

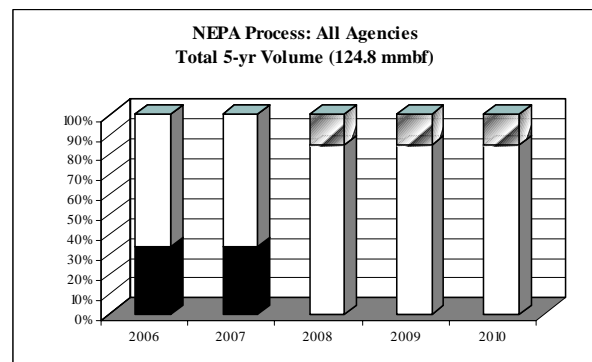
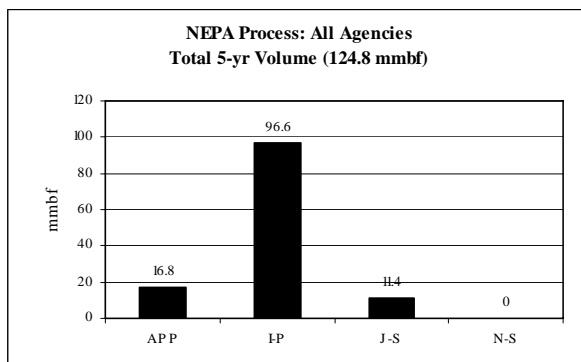
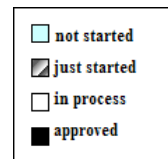


NEPA Overviews

(National Environmental Policy Act)

NEPA Process – All Agencies (Francis Marion NF only):
 Total 5-yr volume (124.8 mmbf; includes gT as mmbf)

	<i>mmbf</i>	<i>% of total</i>
<i>Approved</i>	16.8	13%
<i>In process</i>	96.6	77%
<i>Just started</i>	11.4	10%
<i>Not started</i>	0	0%



ROMs by Species

(Resource Offering/Removal Maps)

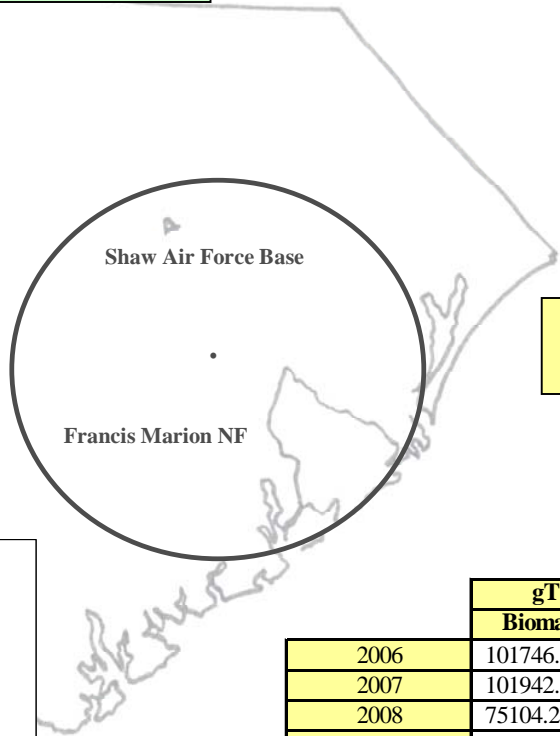
South Carolina 1: Loblolly Pine CROP offering/removal '06 – '10
(gT = 423,150 / S = 45.08 mmbf / L = 17.669 mmbf)

ROM # LLP 1

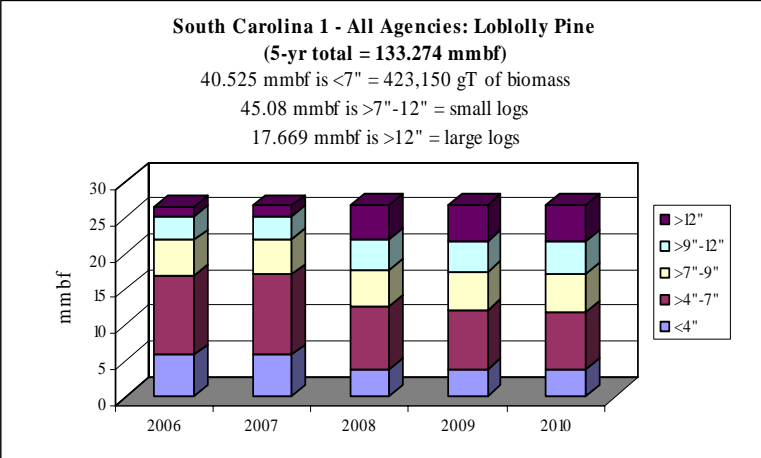
gT = green tons (up to 7" dbh)
 S = small log mmbf (>7"-12" dbh)
 L = large log mmbf (>12" dbh)

Francis Marion NF: 94%
(gT = 414,600 / S = 41.9 / L = 13.8)

SC Forestry Commission: 6%
(gT = 7,733 / S = 2.88 / L = 3.81)



Shaw AFB: <1%
(gT = 817.6 / S = .302 / L = .062)



	gT	mmbf	
	Biomass	Small Log	Large Log
2006	101746.6071	8.175625	1.3615
2007	101942.0871	8.235045	1.38822
2008	75104.26714	9.384455	4.86403
2009	73049.62714	9.536155	4.97948
2010	71308.00714	9.748625	5.0761
Totals	423150.5957	45.079905	17.66933
%	53%	34%	13%
mmbf	70.52509929		

133.2743343

South Carolina 1: Loblolly Pine CROP offering/removal '06 – '10
(gT = 423,150 / S = 45.08 mmbf / L = 17.669 mmbf)

ROM # LPP 1.1

LPP = loblolly pine

Francis Marion NF:

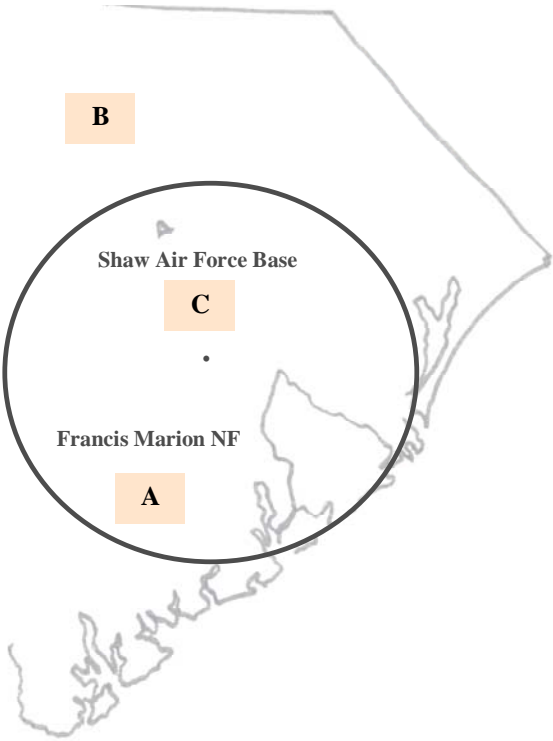
A Francis Marion NF

South Carolina Commission:

B SC Forestry Commission

Shaw AFB:

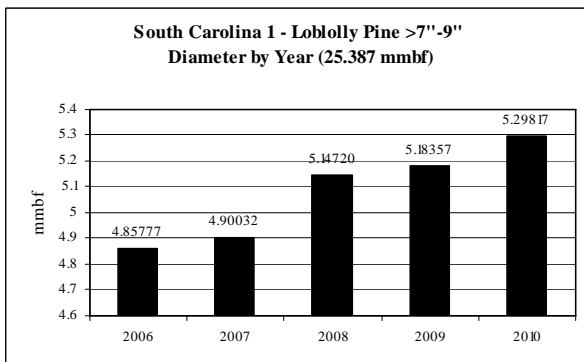
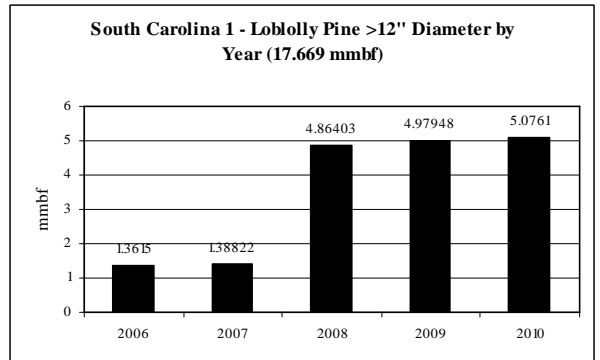
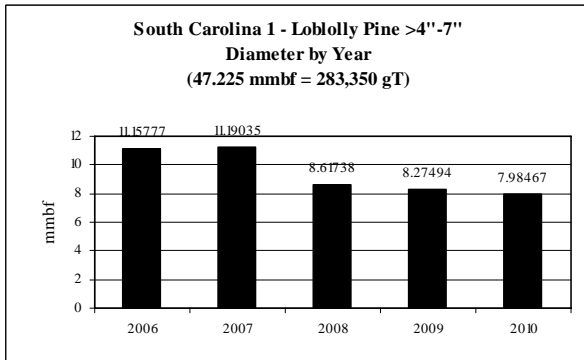
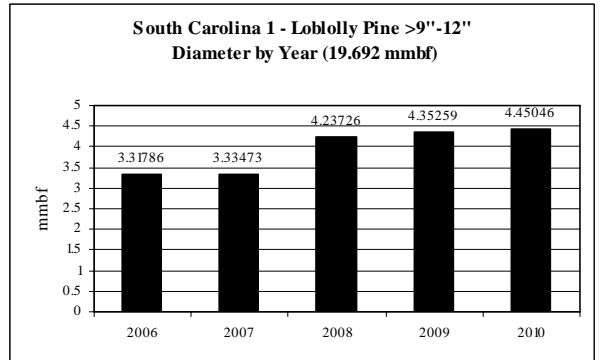
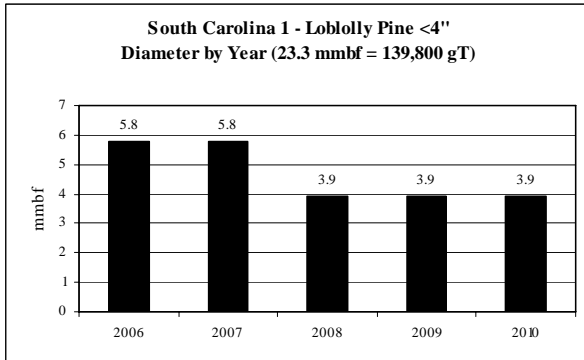
C Shaw AFB



*italics/bold = species offering in CROP

Loblolly Pine: Diameter by Year

ROM # LPP 1.2



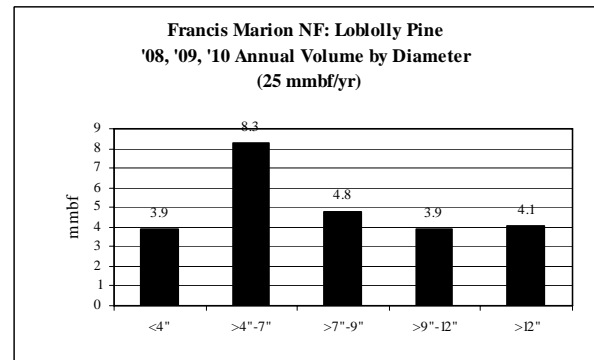
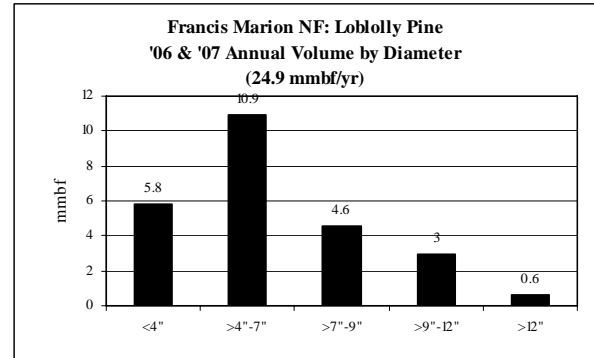
**South Carolina 1: Loblolly Pine CROP offering/removal '06 – '10
(by agency)**

ROM # LPP 1.3

gT = green tons (up to 7" dbh)
S = small log mmbf (>7"-12" dbh)
L = large log mmbf (>12" dbh)

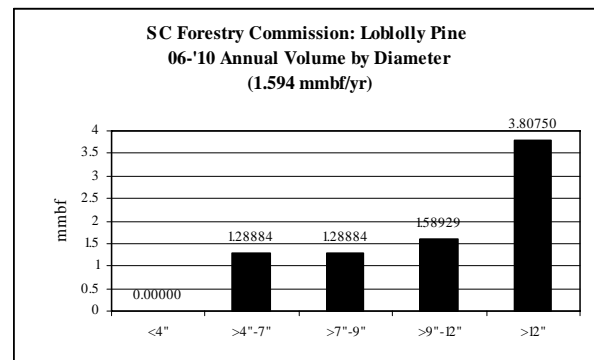
A

Loblolly Pine Francis Marion NF	5-yr = 124.8 mmbf
	<ul style="list-style-type: none"> Fairly level supply from year to year
gT = 414,600	<ul style="list-style-type: none"> <4" = 19% (23.3 mmbf) >4"-7" = 37% (45.8 mmbf)
S = 41.9	<ul style="list-style-type: none"> >7"-9" = 19% (23.9 mmbf) >9"-12" = 14% (18 mmbf)
L = 13.8	<ul style="list-style-type: none"> >12" = 11% (13.8 mmbf)



B

Loblolly Pine SC Forestry Commission	5-yr = 7.974 mmbf; 1.594 mmbf/yr
	<ul style="list-style-type: none"> Level supply from year to year
gT = 7,734	<ul style="list-style-type: none"> <4" = 0% (0 mmbf) >4"-7" = 16% (1.289 mmbf)
S = 2.878	<ul style="list-style-type: none"> >7"-9" = 16% (1.289 mmbf) >9"-12" = 20% (1.589 mmbf)
L = 3.807	<ul style="list-style-type: none"> >12" = 48% (3.807 mmbf)



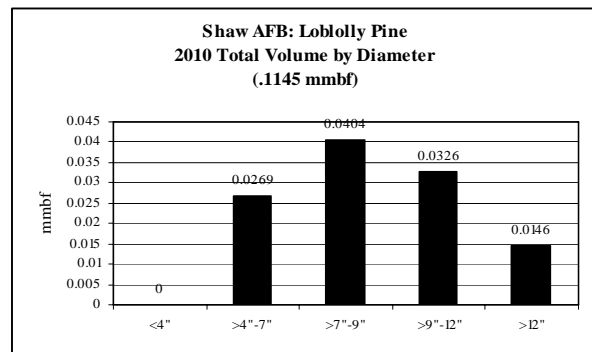
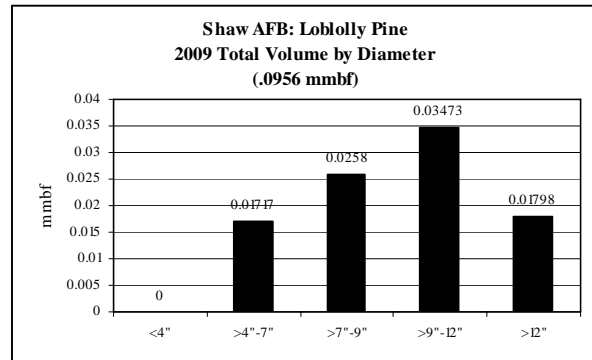
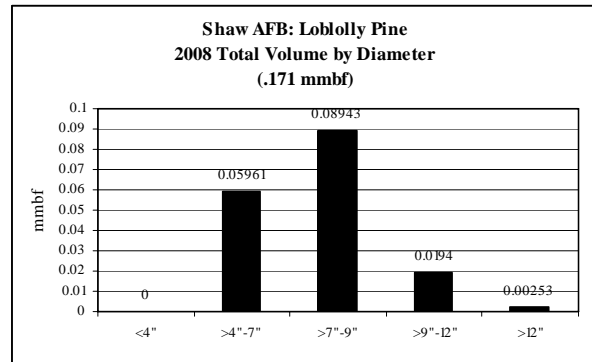
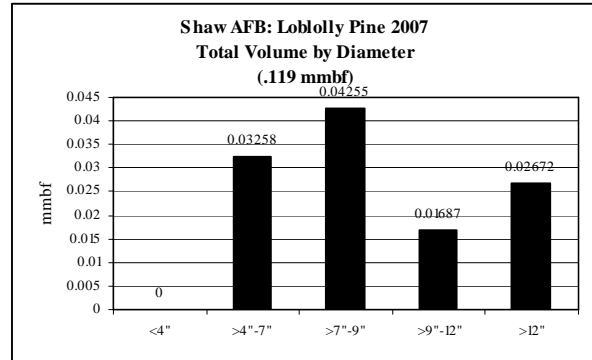
**South Carolina 1: Loblolly Pine CROP offering/removal '06 – '10
(by agency)**

ROM # LPP 1.4

gT = green tons (up to 7" dbh)
S = small log mmbf (>7"-12" dbh)
L = large log mmbf (>12" dbh)

C

Loblolly Pine Shaw AFB	5-yr = .499 mmbf
	<ul style="list-style-type: none"> • No volume for '06; unlevel supply from year to year after
gT = 817.5	<ul style="list-style-type: none"> • <4" = 0% (0 mmbf) • >4"-7" = 27% (.136 mmbf)
S = .302	<ul style="list-style-type: none"> • >7"-9" = 40% (.198 mmbf) • >9"-12" = 21% (.103 mmbf)
L = .062	<ul style="list-style-type: none"> • >12" = 12% (.062 mmbf)

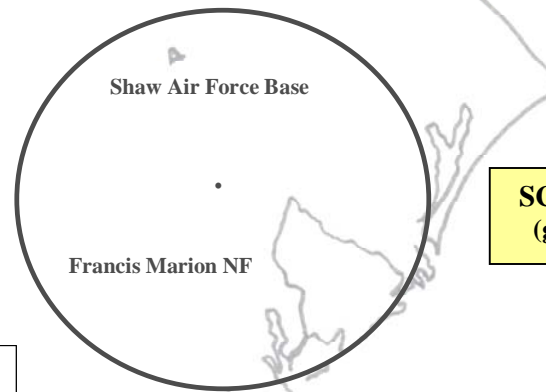


South Carolina 1: Slash Pine CROP offering/removal '06 – '10
(gT = 8,976 / S = 3.33 mmbf / L = 3.9 mmbf)

ROM # Slash P 1

gT = green tons (up to 7" dbh)
 S = small log mmbf (>7"-12" dbh)
 L = large log mmbf (>12" dbh)

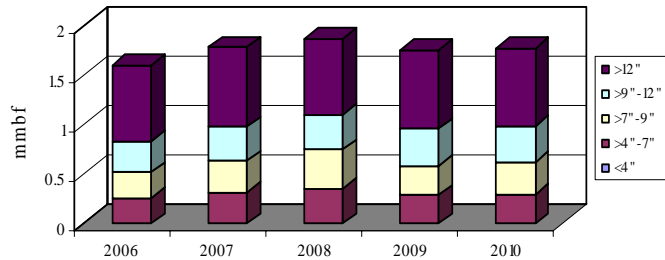
Shaw AFB: 9%
(gT = 1,243.9 / S = .459 / L = .094)



SC Forestry Commission: 91%
(gT = 7,733 / S = 2.88 / L = 3.81)

South Carolina 1 - All Agencies: Slash Pine
(5-yr total = 8.735 mmbf)

1.496 mmbf is <7" = 8,977 gT of biomass
 3.337 mmbf is >7"-12" = small logs
 3.901 mmbf is >12" = large logs



	gT	mmbf	
	Biomass	Small Log	Large Log
2006	1546.607143	0.575625	0.7615
2007	1844.087143	0.666045	0.80216
2008	2090.867143	0.741235	0.76535
2009	1703.387143	0.667735	0.78886
2010	1792.007143	0.686625	0.7837
Totals	8976.955714	3.337265	3.90157
%	17%	38%	45%
mmbf	1.496159286		

8.734994286

South Carolina 1: Slash Pine CROP offering/removal '06 – '10
(gT = 8,976 / S = 3.33 mmbf / L = 3.9 mmbf)

ROM # Slash P 1.1

Slash P = slash pine

Francis Marion NF:

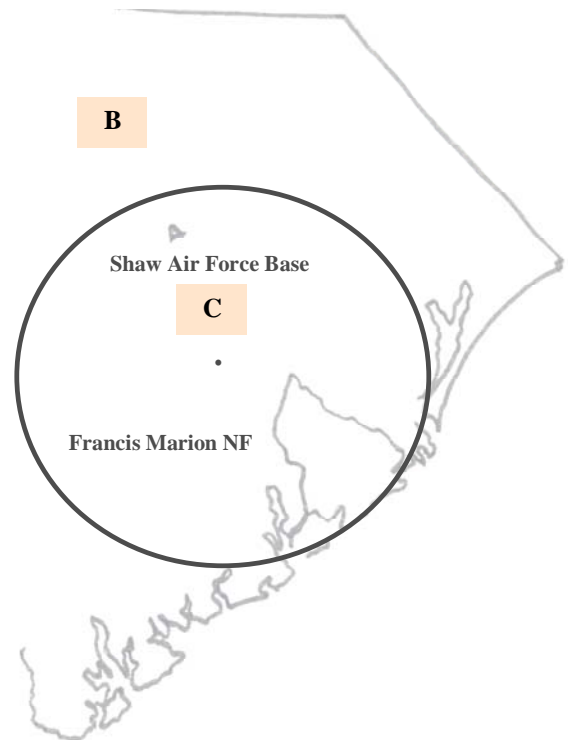
A Francis Marion NF

South Carolina Commission:

B SC Forestry Commission

Shaw AFB:

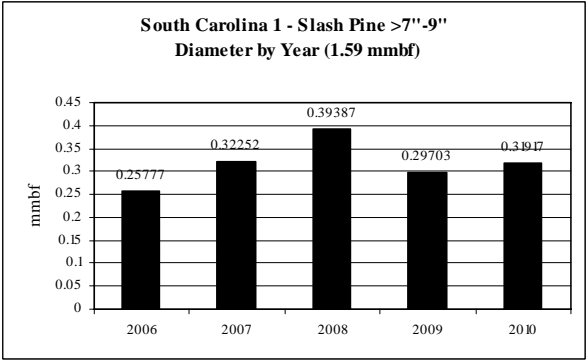
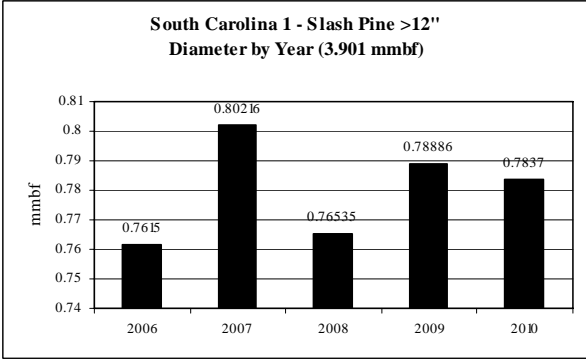
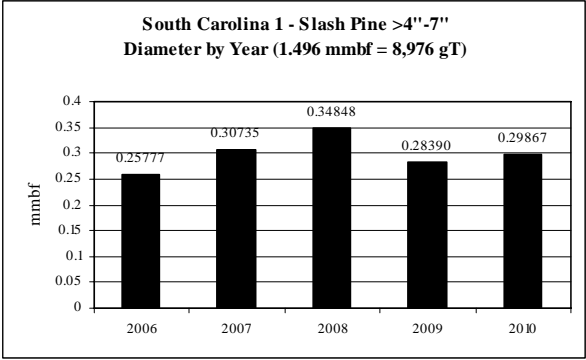
C Shaw AFB



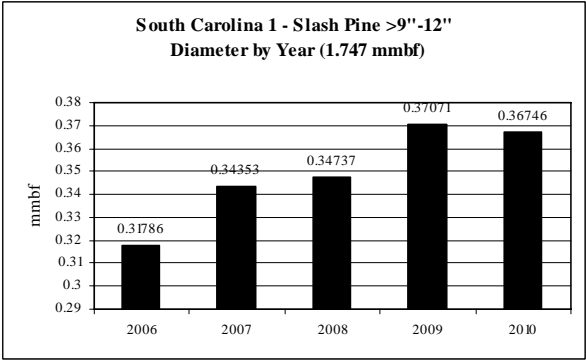
*italics/bold = species offering in CROP

Slash Pine: Diameter by Year

ROM # Slash P 1.2



Note: No volume for <4" dbh



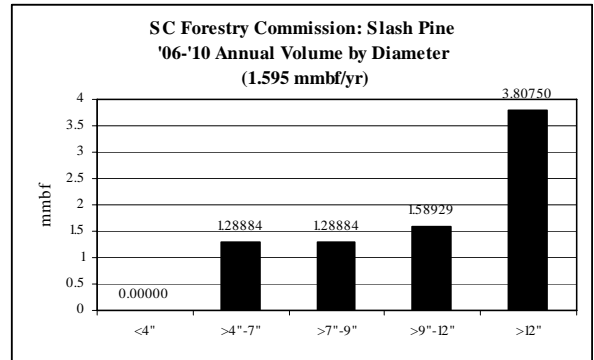
**South Carolina 1: Slash Pine CROP offering/removal '06 – '10
(by agency)**

ROM # Slash P 1.3

gT = green tons (up to 7" dbh)
S = small log mmbf (>7"-12" dbh)
L = large log mmbf (>12" dbh)

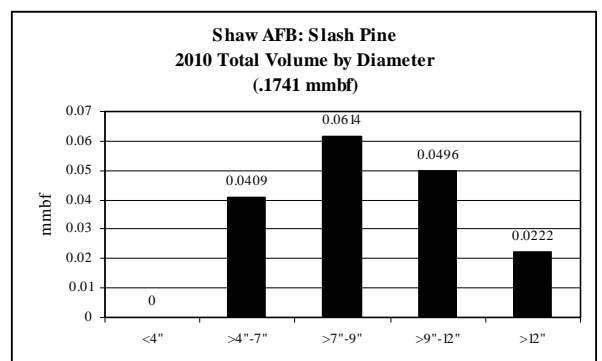
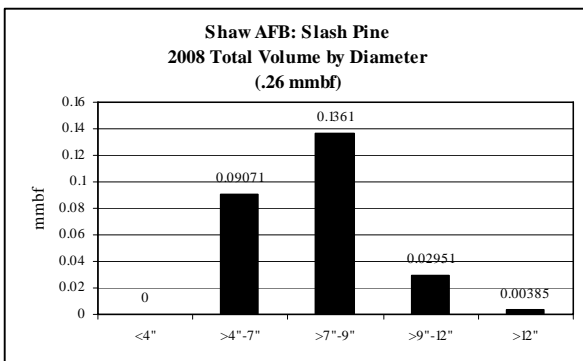
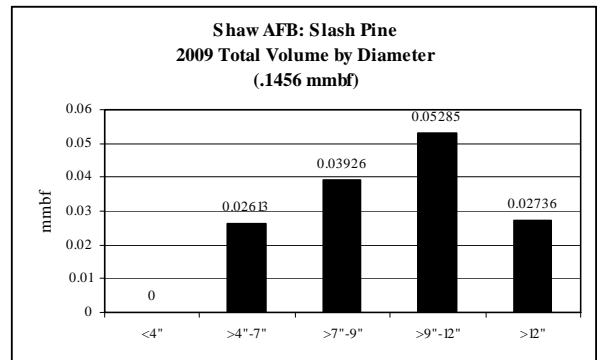
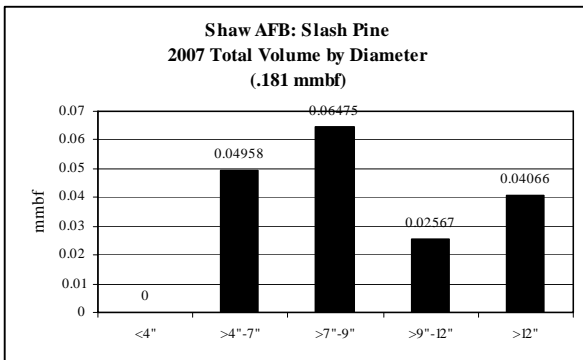
B

Slash Pine SC Forestry Commission	5-yr = 7.974 mmbf; 1.594 mmbf/yr
	<ul style="list-style-type: none"> • Level supply from year to year
gT = 7,734	<ul style="list-style-type: none"> • <4" = 0% (0 mmbf) • >4"-7" = 16% (1.289 mmbf)
S = 2.878	<ul style="list-style-type: none"> • >7"-9" = 16% (1.289 mmbf) • >9"-12" = 20% (1.589 mmbf)
L = 3.807	<ul style="list-style-type: none"> • >12" = 48% (3.807 mmbf)



C

Slash Pine Shaw AFB	5-yr = .7605 mmbf
	<ul style="list-style-type: none"> • No volume in '06; then unlevel supply from year to year
gT = 1,243.9	<ul style="list-style-type: none"> • <4" = 0% (0 mmbf) • >4"-7" = 27% (.2073 mmbf)
S = .4591	<ul style="list-style-type: none"> • >7"-9" = 40% (.3015 mmbf) • >9"-12" = 21% (.1576 mmbf)
L = .0941	<ul style="list-style-type: none"> • >12" = 12% (.0941 mmbf)

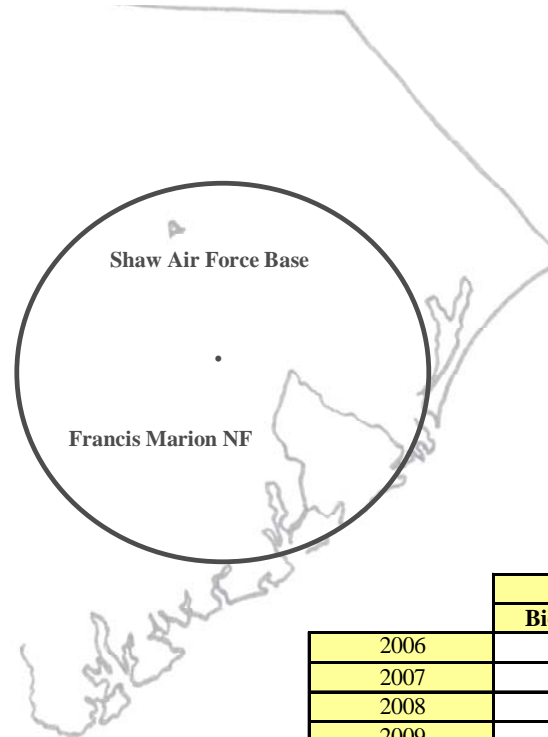


South Carolina 1: Gum Species CROP offering/removal '06 – '10
(gT = 0 / S = 2.385 mmbf / L = 6.053 mmbf)

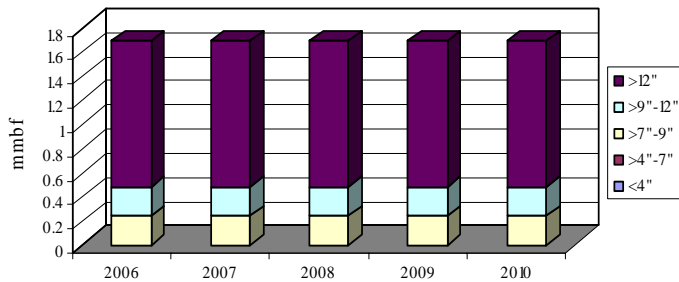
ROM # GS 1

gT = green tons (up to 7" dbh)
 S = small log mmbf (>7"-12" dbh)
 L = large log mmbf (>12" dbh)

SC Forestry Commission: 100%
(gT = 0 / S = 2.385 / L = 6.053)



South Carolina 1 - All Agencies: Gum Species
(5-yr total = 8.438 mmbf)
 0 mmbf is <7" = 0 gT of biomass
 2.385 mmbf is >7"-12" = small logs
 6.053 mmbf is >12" = large logs



	gT	mmbf	
	Biomass	Small Log	Large Log
2006	0	0.477026667	1.21068
2007	0	0.477026667	1.21068
2008	0	0.477026667	1.21068
2009	0	0.477026667	1.21068
2010	0	0.477026667	1.21068
Totals	0	2.385133333	6.0534
%	0%	28%	72%
mmbf	0		

8.438533333

South Carolina 1: Gum Species CROP offering/removal '06 - '10
(gT = 0 / S = 2.385 mmbf / L = 6.053 mmbf)

ROM # GS 1.1

GS = gum species

Francis Marion NF:

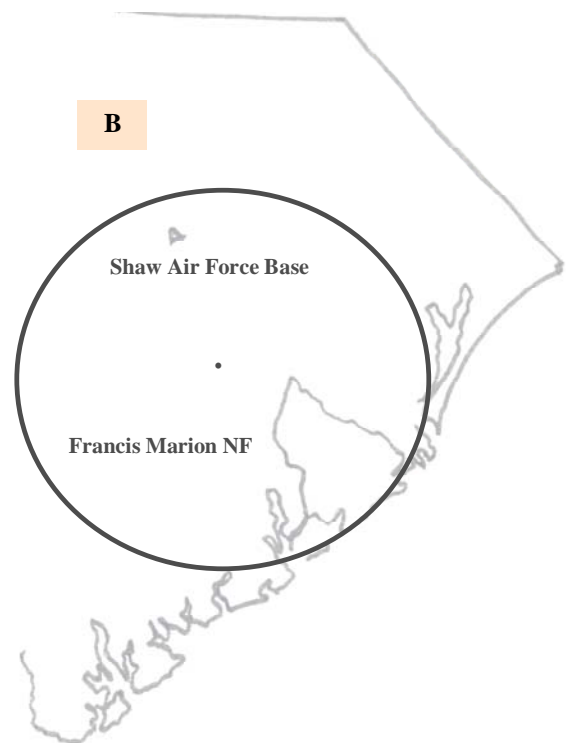
A Francis Marion NF

South Carolina Commission:

B SC Forestry Commission

Shaw AFB:

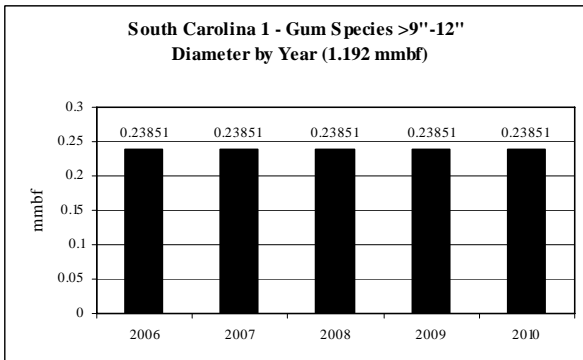
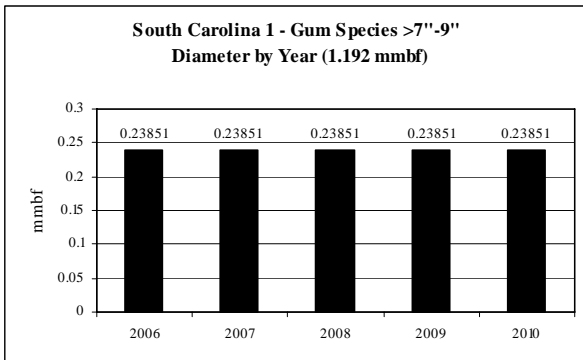
C Shaw AFB



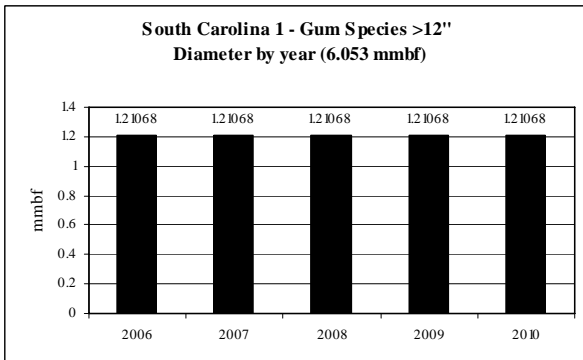
*italics/bold = species offering in CROP

Gum Species: Diameter by Year

ROM # GS 1.2



Note: No volume for <4",
>4"-7" dbh



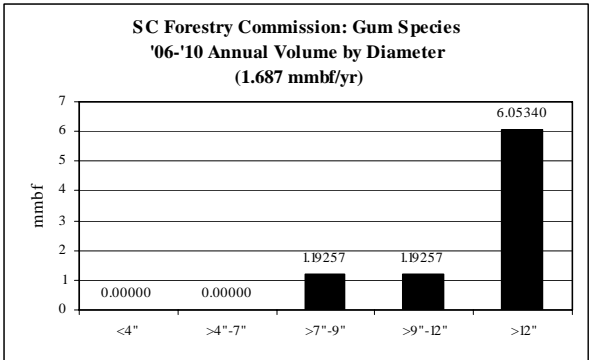
**South Carolina 1: Gum Species CROP offering/removal '06 – '10
(by agency)**

ROM # GS 1.3

gT = green tons (up to 7" dbh)
S = small log mmbf (>7"-12" dbh)
L = large log mmbf (>12" dbh)

B

Gum Species SC Forestry Commission	5-yr = 8.438 mmbf; 1.687 mmb/yr
	<ul style="list-style-type: none"> • Level supply from year to year
gT = 0	<ul style="list-style-type: none"> • <4" = 0% (0 mmbf) • >4"-7" = 0% (0 mmbf)
S = 2.385	<ul style="list-style-type: none"> • >7"-9" = 14% (1.192 mmbf) • >9"-12" = 14% (1.192 mmbf)
L = 6.053	<ul style="list-style-type: none"> • >12" = 72% (6.053 mmbf)

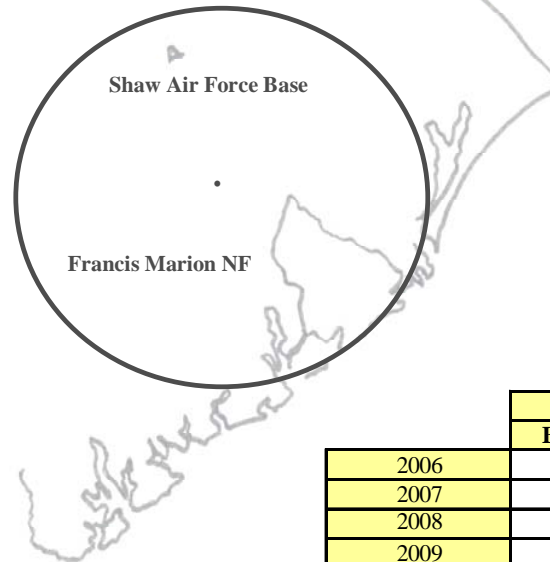


South Carolina 1: Other Hardwoods CROP offering/removal '06 – '10
(gT = 0/ S = 1.92 mmbf / L = 2.86 mmbf)

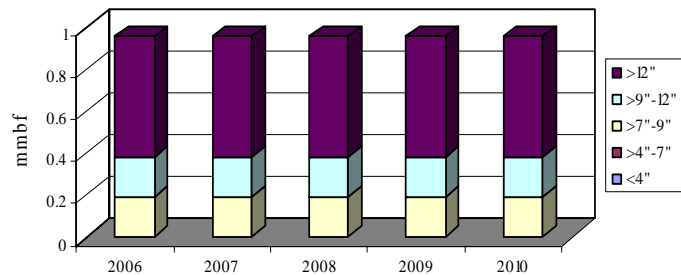
ROM # OH 1

gT = green tons (up to 7" dbh)
 S = small log mmbf (>7"-12" dbh)
 L = large log mmbf (>12" dbh)

SC Forestry Commission: 100%
(gT = 0 / S = 1.92 / L = 2.86)



South Carolina 1 - All Agencies: Other Hardwoods
(5-yr total = 4.779 mmbf)
 0 mmbf is <7" = 0 gT of biomass
 1.92 mmbf is >7"-12" = small logs
 2.86 mmbf is >12" = large logs



	gT	mmbf	
	Biomass	Small Log	Large Log
2006	0	0.383966667	0.5719
2007	0	0.383966667	0.5719
2008	0	0.383966667	0.5719
2009	0	0.383966667	0.5719
2010	0	0.383966667	0.5719
Totals	0	1.919833333	2.8595
%	0%	40%	60%
mmbf	0		

4.779333333

Other Hardwoods CROP offering/removal '06 – '10
(gT = 0/ S = 1.92 mmbf / L = 2.86 mmbf)

ROM # OH 1.1

OH = other hardwoods

Francis Marion NF:

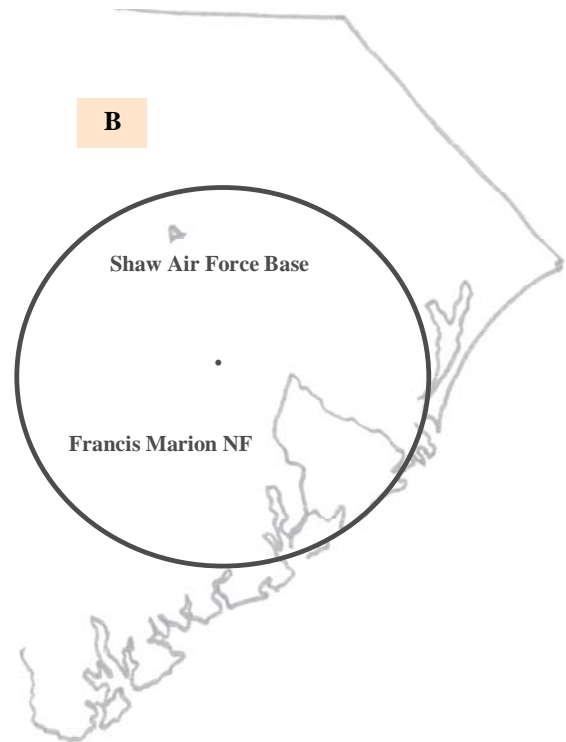
A Francis Marion NF

South Carolina Commission:

B SC Forestry Commission

Shaw AFB:

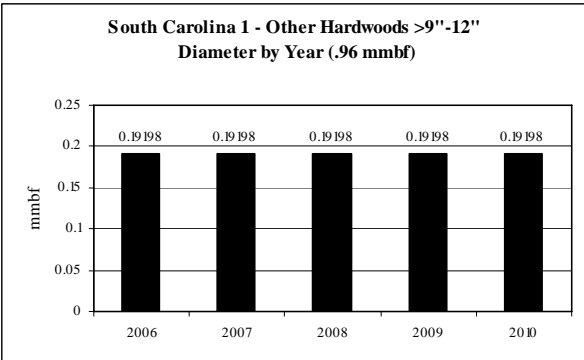
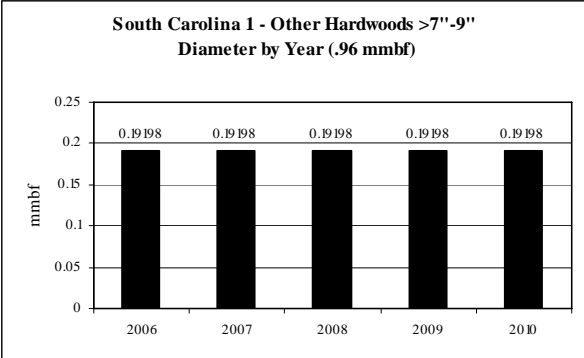
C Shaw AFB



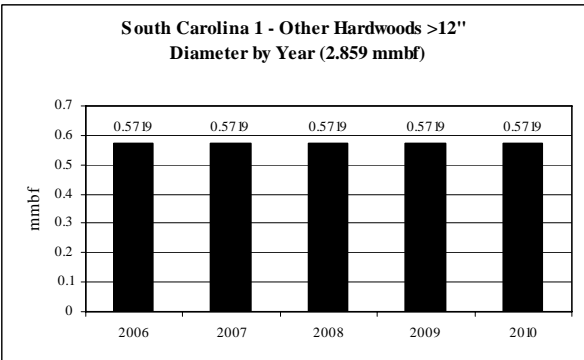
*italics/bold = species offering in CROP

Other Hardwoods: Diameter by Year

ROM # OH 1.2



Note: No volume for <4",
>4"-7" dbh



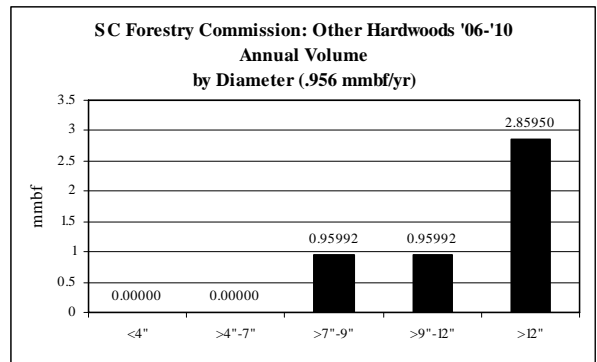
**South Carolina 1: Other Hardwoods CROP offering/removal '06 – '10
(by agency)**

ROM # OH 1.3

gT = green tons (up to 7" dbh)
S = small log mmbf (>7"-12" dbh)
L = large log mmbf (>12" dbh)

B

Other Hardwoods SC Forestry Commission	5-yr = 4.78 mmbf; .956 mmbf/yr
	<ul style="list-style-type: none"> • Level supply from year to year
gT = 0	<ul style="list-style-type: none"> • <4" = 0% (0 mmbf) • >4"-7" = 0% (0 mmbf)
S = 1.92	<ul style="list-style-type: none"> • >7"-9" = 20% (.96 mmbf) • >9"-12" = 20% (.96 mmbf)
L = 2.86	<ul style="list-style-type: none"> • >12" = 60% (2.86 mmbf)

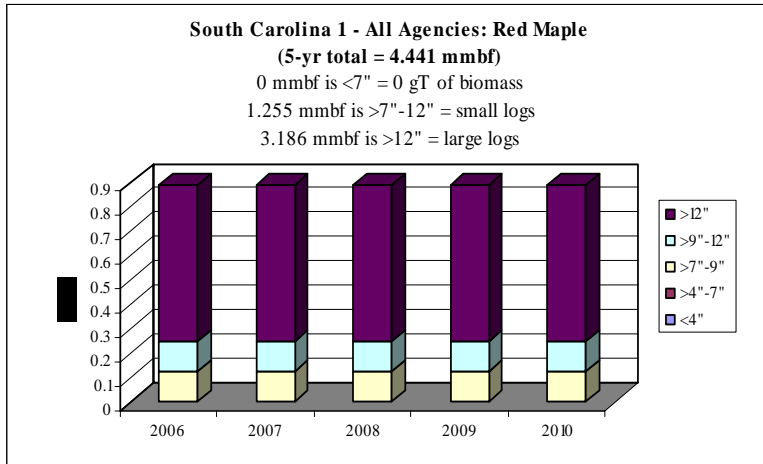
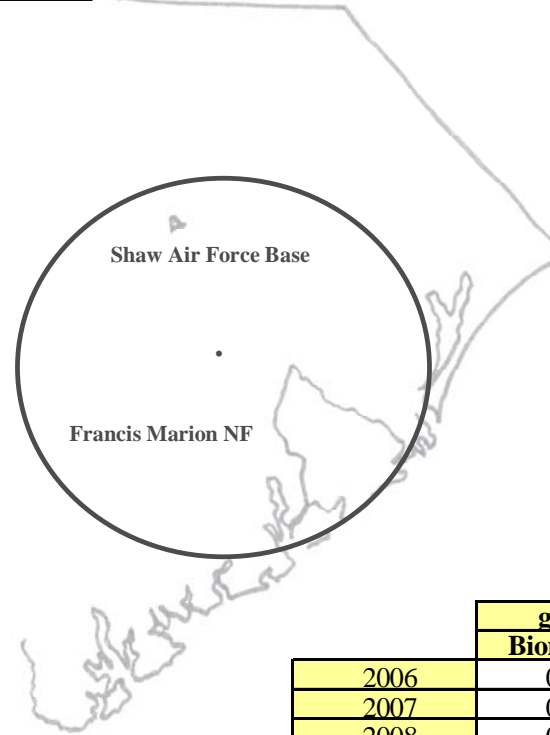


South Carolina 1: Red Maple CROP offering/removal '06 – '10
(gT = 0/ S = 1.255 mmbf / L = 3.186 mmbf)

ROM # RM 1

gT = green tons (up to 7" dbh)
 S = small log mmbf (>7"-12" dbh)
 L = large log mmbf (>12" dbh)

SC Forestry Commission: 100%
(gT = 0 / S = 1.255 / L = 3.186)



	gT	mmbf	
	Biomass	Small	Large Log
2006	0	0.25106666	0.6372
2007	0	0.25106666	0.6372
2008	0	0.25106666	0.6372
2009	0	0.25106666	0.6372
2010	0	0.25106666	0.6372
Totals	0	1.25533333	3.186
%	0%	28%	72%
mmbf	0		

4.44133333

South Carolina: *Red Maple* CROP offering/removal '06 – '10
(gT = 0 / S = 1.255 mmbf / L = 3.186 mmbf)

ROM # RM 1.1

RM = red maple

Francis Marion NF:

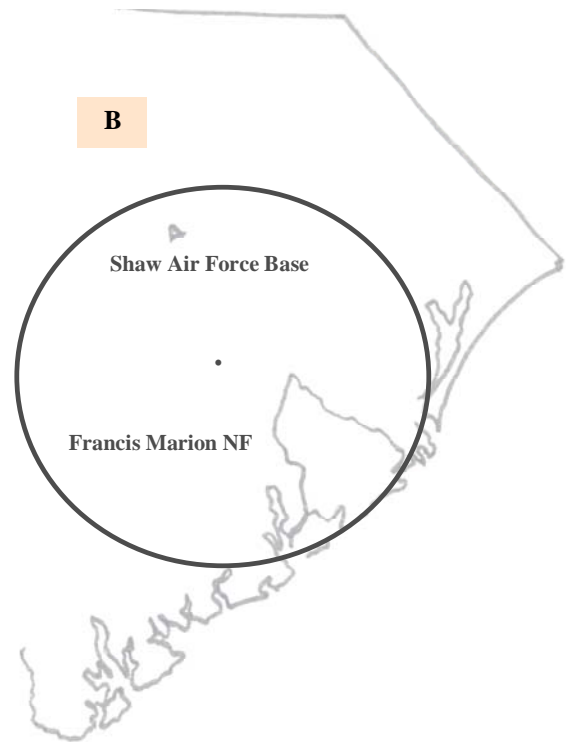
A Francis Marion NF

South Carolina Commission:

B SC Forestry Commission

Shaw AFB:

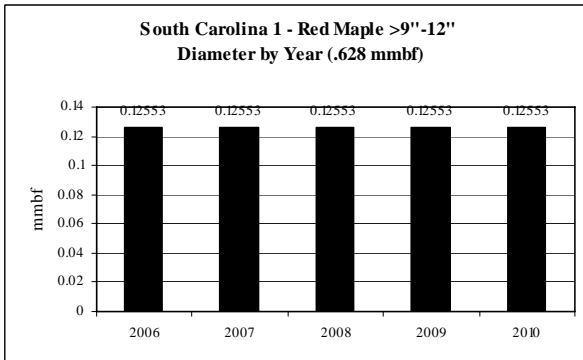
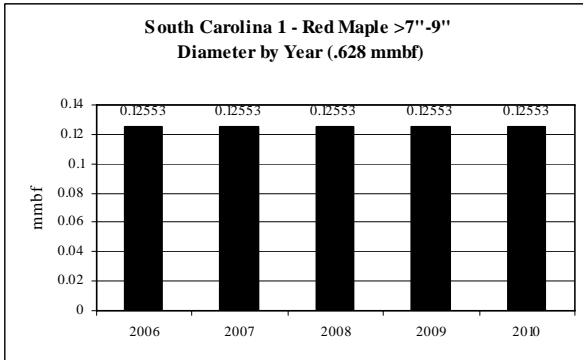
C Shaw AFB



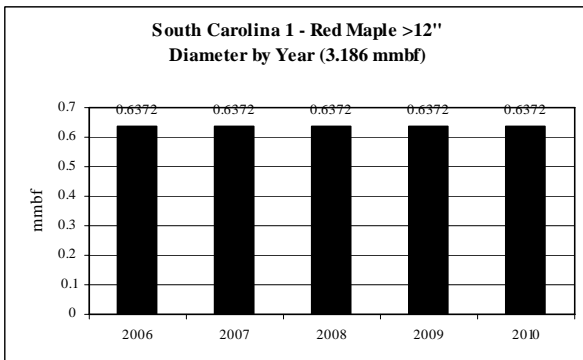
*italics/bold = species offering in CROP

Red Maple: Diameter by Year

ROM # RM 1.2



Note: No volume for <4",
>4"-7" dbh



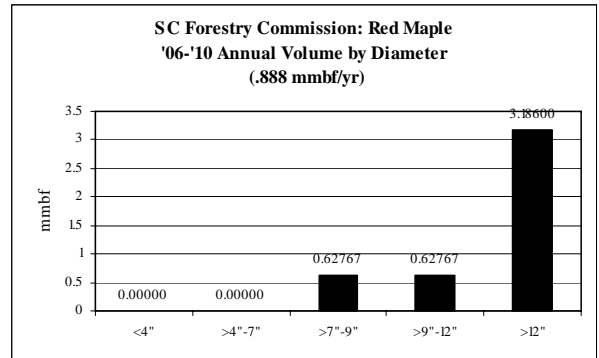
**South Carolina: Red Maple CROP offering/removal '06 – '10
(by agency)**

ROM # RM 1.3

gT = green tons (up to 7" dbh)
S = small log mmbf (>7"-12" dbh)
L = large log mmbf (>12" dbh)

A

Red Maple SC Forestry Commission	5-yr = 4.441 mmbf; .888 mmbf/yr
	<ul style="list-style-type: none"> • Level supply from year to year
gT = 0	<ul style="list-style-type: none"> • <4" = 0% (0 mmbf) • >4"-7" = 0% (0 mmbf)
S = 1.255	<ul style="list-style-type: none"> • >7"-9" = 14% (.628 mmbf) • >9"-12" = 14% (.628 mmbf)
L = 3.186	<ul style="list-style-type: none"> • >12" = 72% (3.186 mmbf)

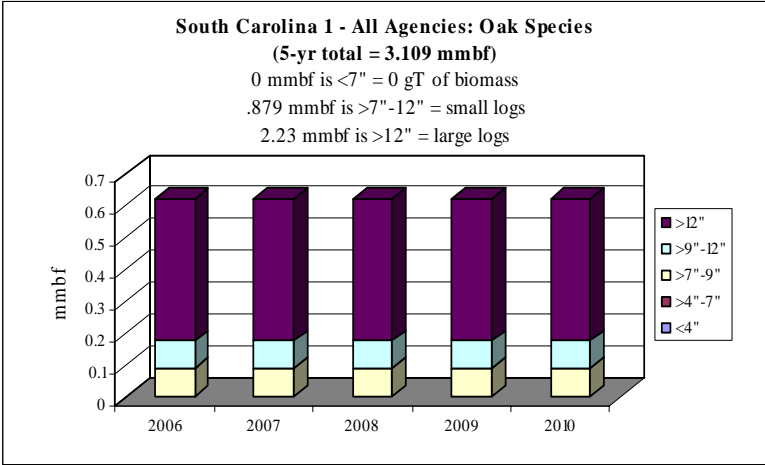
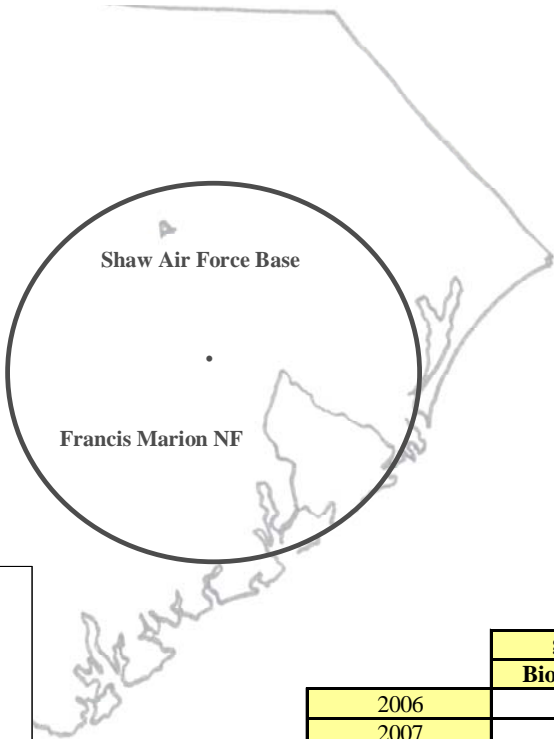


South Carolina: Oak Species CROP offering/removal '06 – '10
(gT = 0 / S = .878 mmbf / L = 2.23 mmbf)

ROM # Oak S 1

gT = green tons (up to 7" dbh)
 S = small log mmbf (>7"-12" dbh)
 L = large log mmbf (>12" dbh)

SC Forestry Commission: 100%
(gT = 0 / S = .878 / L = 2.23)



	gT	mmbf	
	Biomass	Small Log	Large Log
2006	0	0.175746667	0.44604
2007	0	0.175746667	0.44604
2008	0	0.175746667	0.44604
2009	0	0.175746667	0.44604
2010	0	0.175746667	0.44604
Totals	0	0.878733333	2.2302
%	0%	28%	72%
mmbf	0		

3.108933333

South Carolina 1: *Oak Species* CROP offering/removal '06 - '10
(gT = 0 / S = .878 mmbf / L = 2.23 mmbf)

ROM # Oak S 1.1

Oak S = oak species

Francis Marion NF:

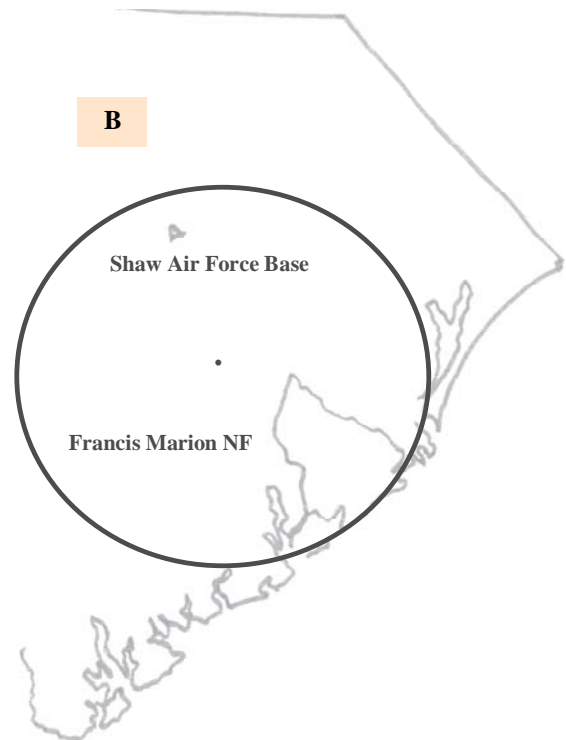
A Francis Marion NF

South Carolina Commission:

B SC Forestry Commission

Shaw AFB:

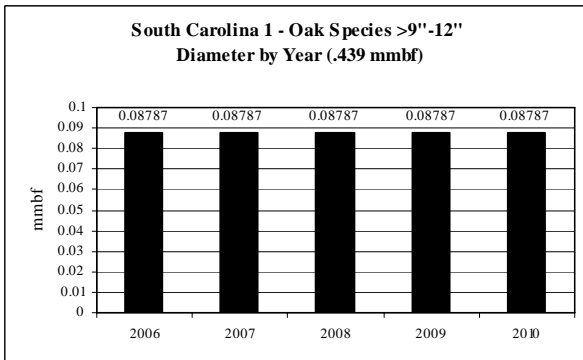
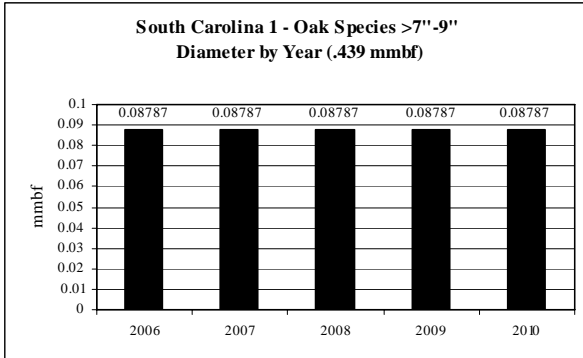
C Shaw AFB



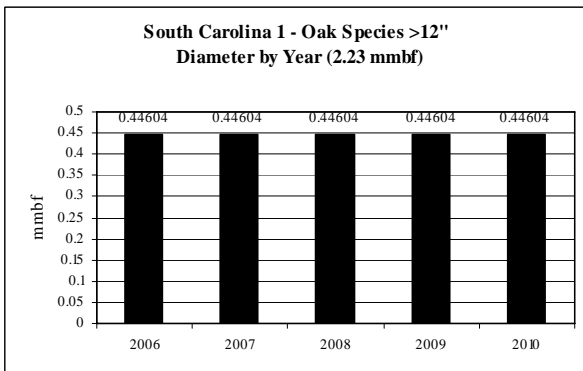
*italics/bold = species offering in CROP

Oak Species: Diameter by Year

ROM # Oak S 1.2



Note: No volume for <4",
>4"-7" dbh



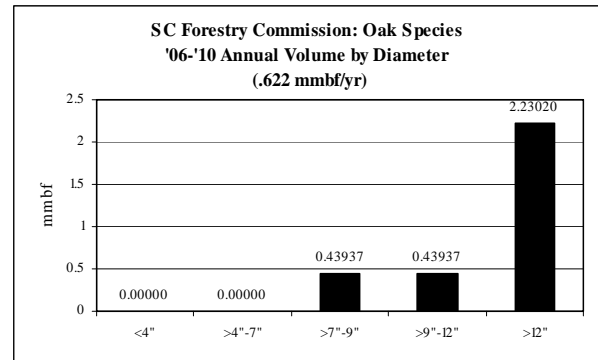
**South Carolina 1: Oak Species CROP offering/removal '06 – '10
(by agency)**

ROM # Oak S 1.3

gT = green tons (up to 7" dbh)
S = small log mmbf (>7"-12" dbh)
L = large log mmbf (>12" dbh)

B

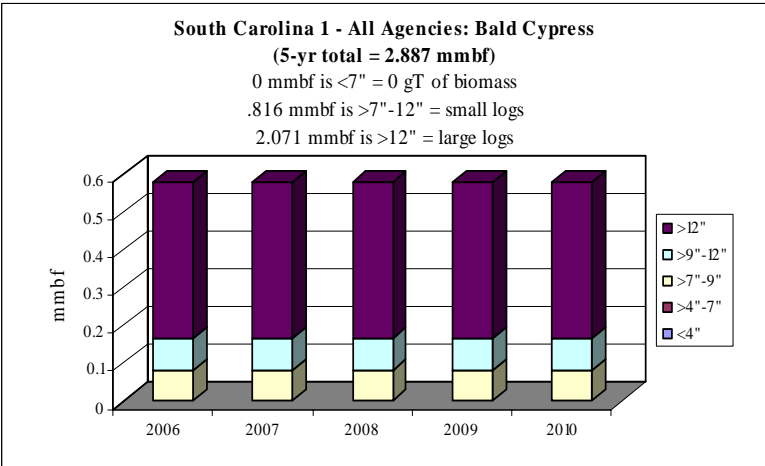
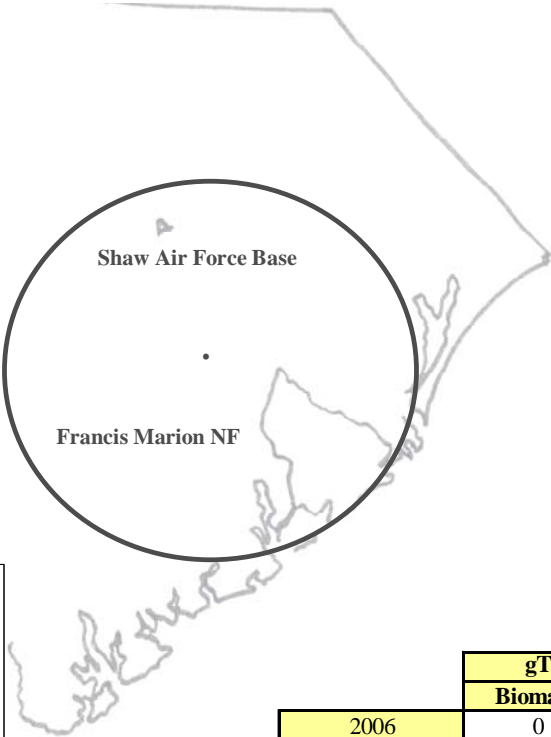
Oak Species SC Forestry Commission	5-yr = 3.108 mmbf; .622 mmbf/yr
	<ul style="list-style-type: none"> • Level supply from year to year
gT = 0	<ul style="list-style-type: none"> • <4" = 0% (0 mmbf) • >4"-7" = 0% (0 mmbf)
S = .878	<ul style="list-style-type: none"> • >7"-9" = 14% (.439 mmbf) • >9"-12" = 14% (.439 mmbf)
L = 2.23	<ul style="list-style-type: none"> • >12" = 72% (2.23 mmbf)



South Carolina 1: Bald Cypress CROP offering/removal '06 – '10
(gT = 0 / S = .816 mmbf / L = 2.07 mmbf)

ROM # BC 1

SC Forestry Commission: 100%
(gT = 0 / S = .816 / L = 2.07)



	gT	mmbf	
	Biomass	Small Log	Large Log
2006	0	0.163193	0.41418
2007	0	0.163193333	0.41418
2008	0	0.163193333	0.41418
2009	0	0.163193333	0.41418
2010	0	0.163193333	0.41418
Totals	0	0.815966667	2.0709
%	0%	28%	72%
mmbf	0		

2.886866667

South Carolina 1: *Bald Cypress* CROP offering/removal '06 - '10
(gT = 0 / S = .816 mmbf / L = 2.07 mmbf)

ROM # BC 1.1

Francis Marion NF:

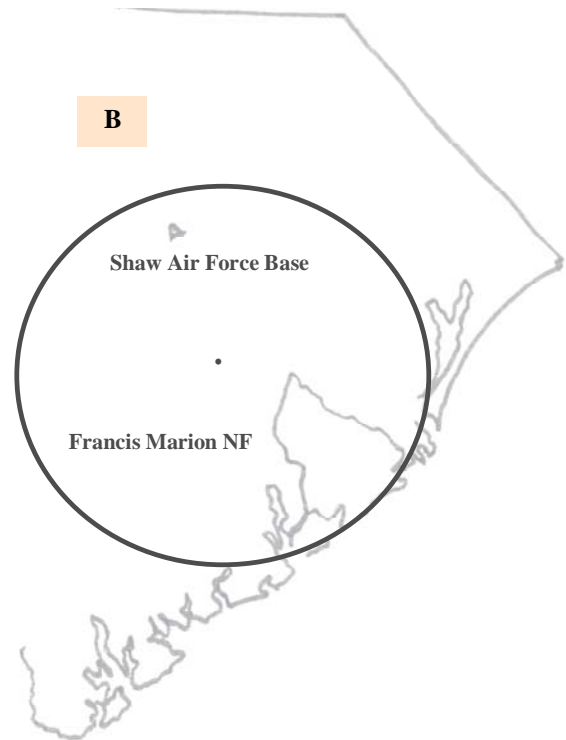
A Francis Marion NF

South Carolina Commission:

B SC Forestry Commission

Shaw AFB:

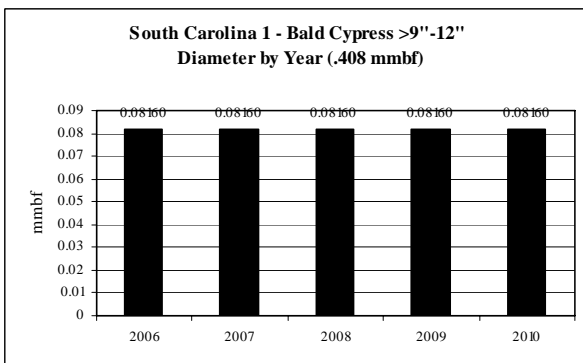
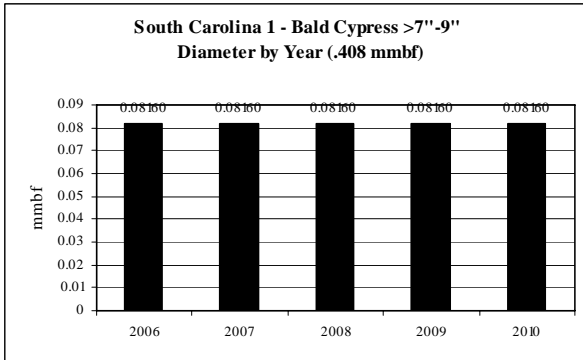
C Shaw AFB



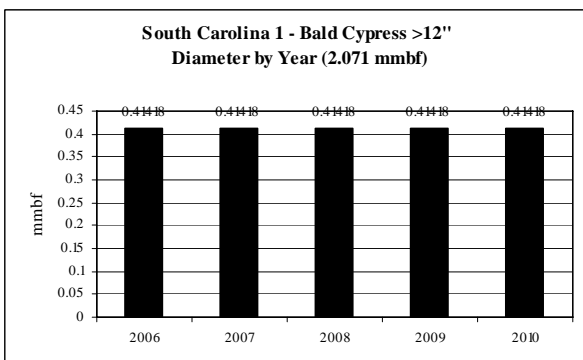
*italics/bold = species offering in CROP

Bald Cypress: Diameter by Year

ROM # BC 1.2



Note: No volume for <4",
>4"-7" dbh



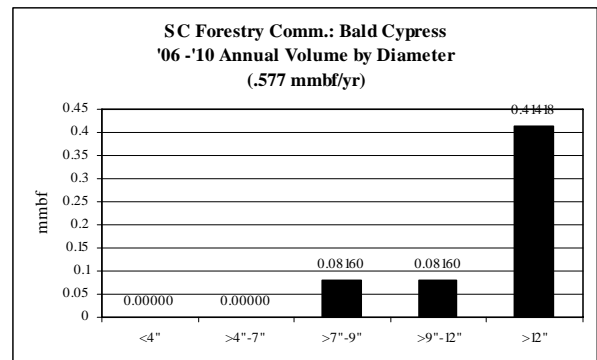
South Carolina 1: Bald Cypress CROP offering/removal '06 – '10
(by agency)

ROM # BC 1.3

gT = green tons (up to 7" dbh)
S = small log mmbf (>7"-12" dbh)
L = large log mmbf (>12" dbh)

B

Bald Cypress SC Forestry Commission	5-yr = 2.886 mmbf; .577 mmbf/yr
	<ul style="list-style-type: none"> • Level supply from year to year
gT = 0	<ul style="list-style-type: none"> • <4" = 0% (0 mmbf) • >4"-7" = 0% (0 mmbf)
S = .816	<ul style="list-style-type: none"> • >7"-9" = 14% (.408 mmbf) • >9"-12" = 14% (.408 mmbf)
L = 2.07	<ul style="list-style-type: none"> • >12" = 72% (2.07 mmbf)

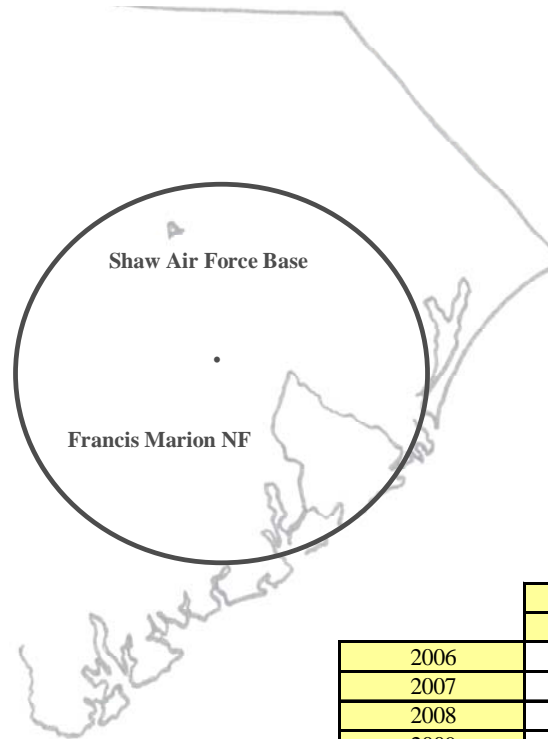


South Carolina 1: Longleaf Pine CROP offering/removal '06 – '10
(gT = 1,422 / S = .525 mmbf / L = .107 mmbf)

ROM # L Leaf 1

gT = green tons (up to 7" dbh)
 S = small log mmbf (>7"-12" dbh)
 L = large log mmbf (>12" dbh)

Shaw AFB: 100%
(gT = 1,422 / S = .525 / L = .107)

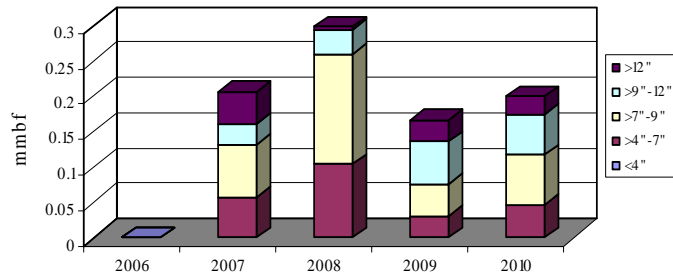


South Carolina 1 - All Agencies: Longleaf Pine
(5-yr total = .869 mmbf)

.237 mmbf is <7" = 1,422 gT of biomass

.525 mmbf is >7"-12" = small logs

.107 mmbf is >12" = large logs



	gT	mmbf	
	Biomass	Small Log	Large Log
2006	0	0	0
2007	340.02	0.10333	0.0465
2008	622.02	0.18923	0.0044
2009	179.22	0.10527	0.03127
2010	280.8	0.1269	0.0253
Totals	1422.06	0.52473	0.10747
%	27%	60%	12%
mmbf	0.23701		

0.86921

South Carolina 1: *Longleaf Pine* CROP offering/removal '06 – '10
(gT = 1,422 / S = .525 mmbf / L = .107 mmbf)

ROM # L Leaf 1.1

L Leaf = longleaf pine

Francis Marion NF:

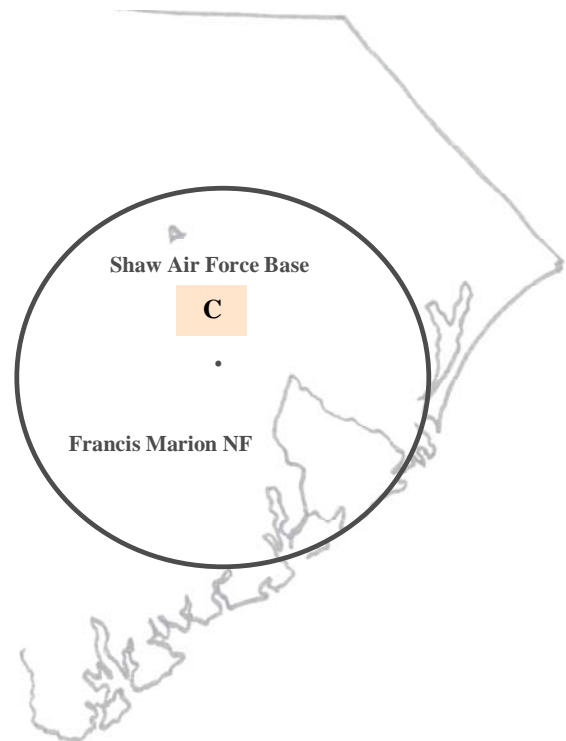
A Francis Marion NF

South Carolina Commission:

B SC Forestry Commission

Shaw AFB:

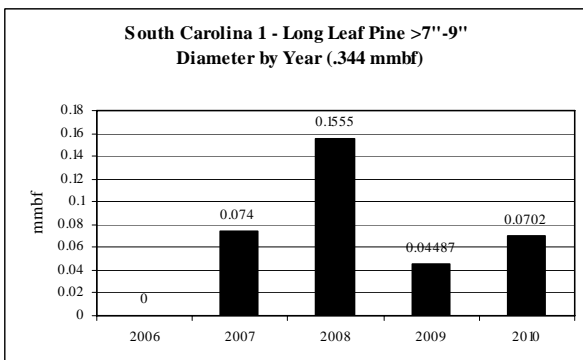
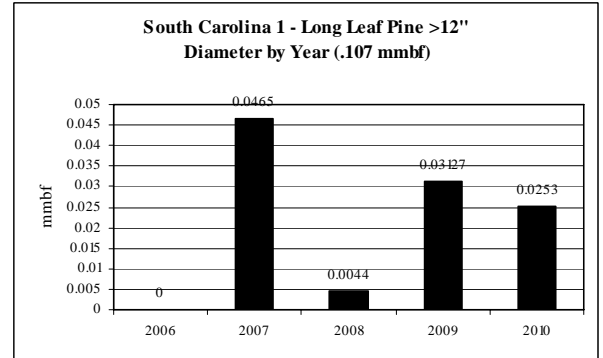
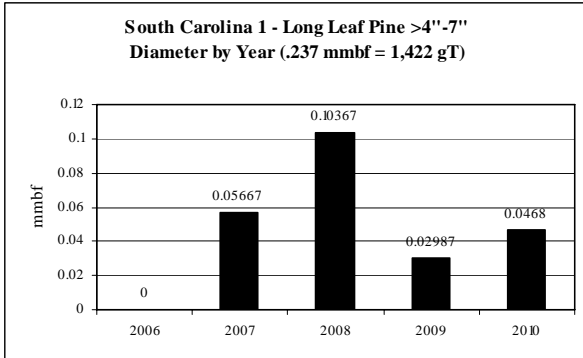
C *Shaw AFB*



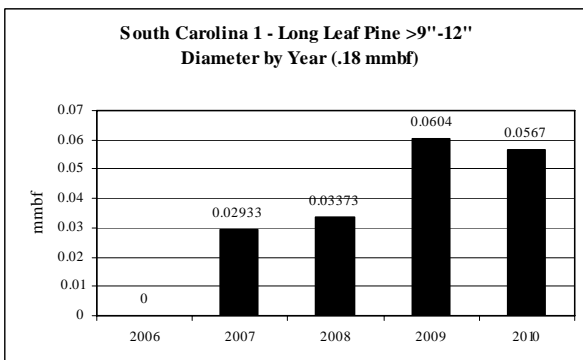
*italics/bold = species offering in CROP

Longleaf Pine: Diameter by Year

ROM # L Leaf 1.2



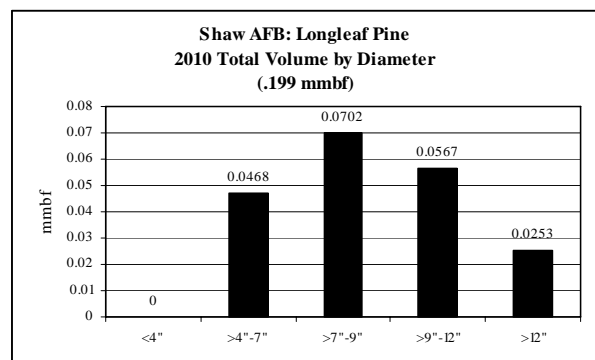
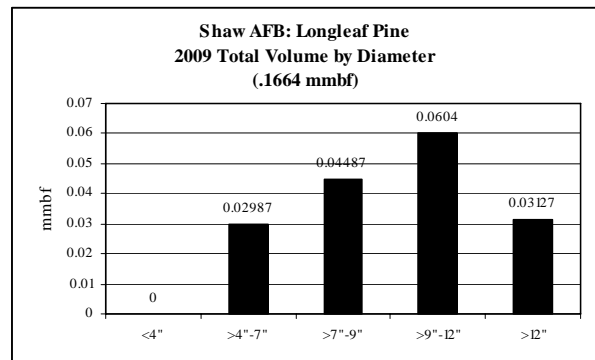
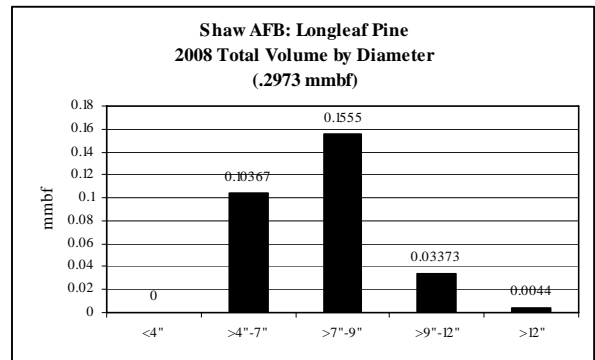
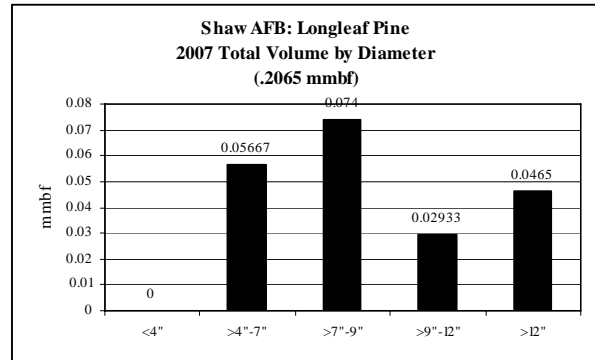
Note: No volume for <4" dbh



South Carolina 1: Longleaf Pine CROP offering/removal '06 – '10
(by agency)

ROM # L Leaf 1.3

gT = green tons (up to 7" dbh)
S = small log mmbf (>7"-12" dbh)
L = large log mmbf (>12" dbh)



C

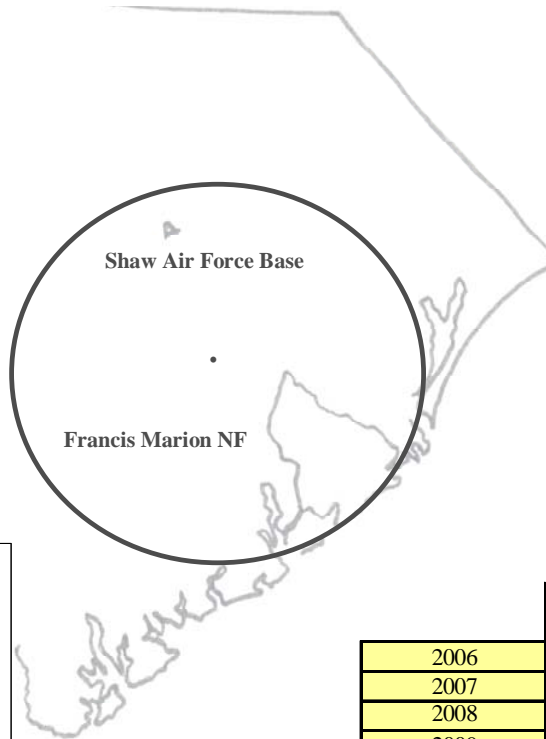
Longleaf Pine Shaw AFB	5-yr = .869 mmbf
	<ul style="list-style-type: none"> • Unlevel supply from year to year
gT = 1,422	<ul style="list-style-type: none"> • <4" = 0% (0 mmbf) • >4"-7" = 27% (.237 mmbf)
S = .525	<ul style="list-style-type: none"> • >7"-9" = 40% (.345 mmbf) • >9"-12" = 21% (.18 mmbf)
L = .107	<ul style="list-style-type: none"> • >12" = 12% (.107 mmbf)

South Carolina 1: Scrub Oak CROP offering/removal '06 – '10
(gT = 71.04 / S = .0262 mmbf / L = .005 mmbf)

ROM # S Oak 1

gT = green tons (up to 7" dbh)
 S = small log mmbf (>7"-12" dbh)
 L = large log mmbf (>12" dbh)

Shaw AFB: 100%
(gT = 71.04 / S = .0262 / L = .005)

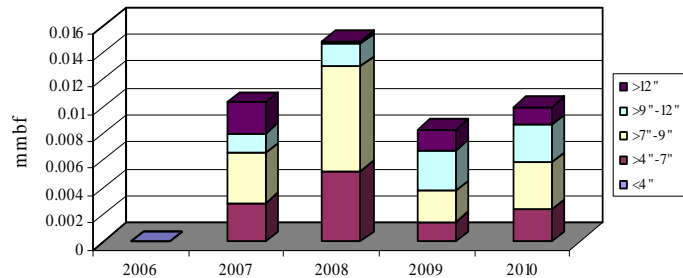


South Carolina 1 - All Agencies: Scrub Oak
(5-yr total = .043 mmbf)

.012 mmbf is <7" = 71.04 gT of biomass

.026 mmbf is >7"-12" = small logs

.005 mmbf is >12" = large logs



	gT	mmbf	
	Biomass	Small Log	Large Log
2006	0	0	0
2007	16.98	0.00517	0.00232
2008	31.08	0.00946	0.00022
2009	8.94	0.00524	0.00156
2010	14.04	0.0063	0.0013
Totals	71.04	0.02617	0.0054
%	27%	60%	12%
mmbf	0.01184		

0.04341

South Carolina 1: *Scrub Oak* CROP offering/removal '06 – '10
(gT = 71.04 / S = .0262 mmbf / L = .005 mmbf)

ROM # S Oak 1.1

S Oak = scrub oak

Francis Marion NF:

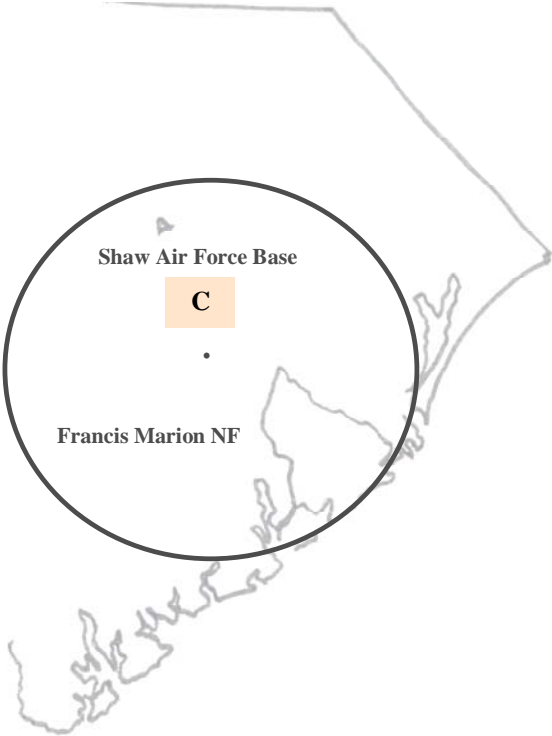
A Francis Marion NF

South Carolina Commission:

B SC Forestry Commission

Shaw AFB:

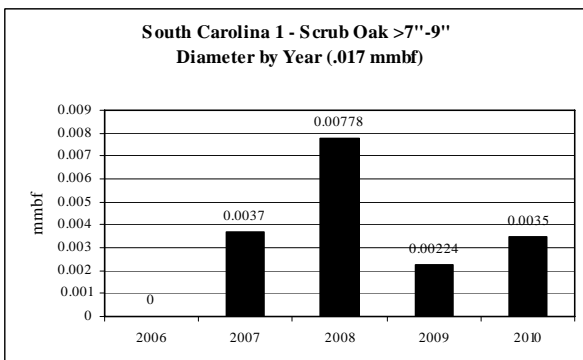
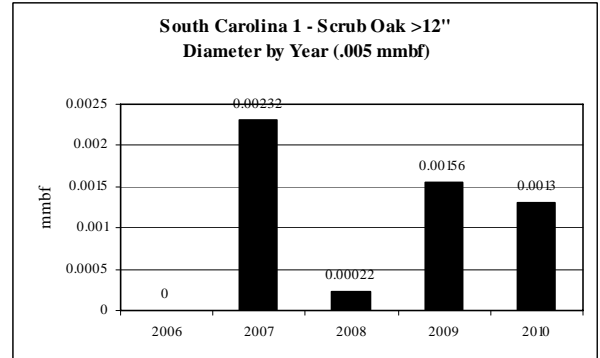
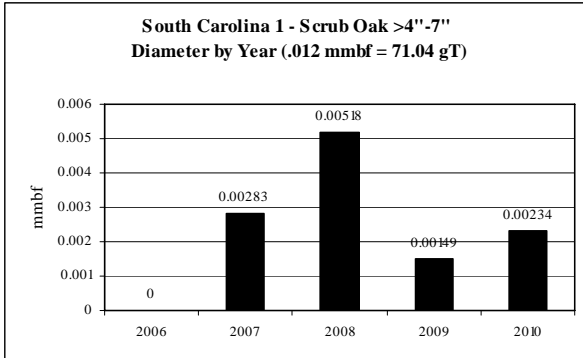
C *Shaw AFB*



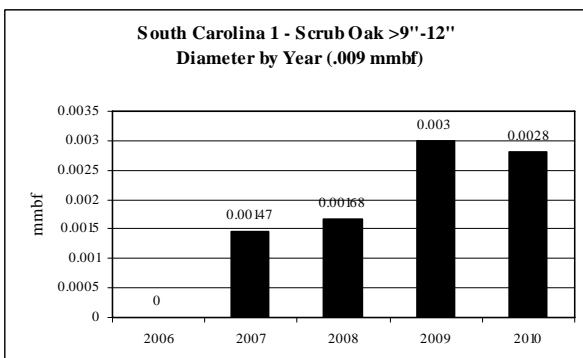
*italics/bold = species offering in CROP

Scrub Oak: Diameter by Year

ROM # S Oak 1.2



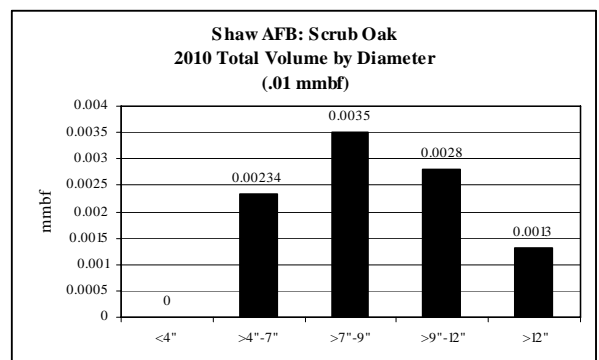
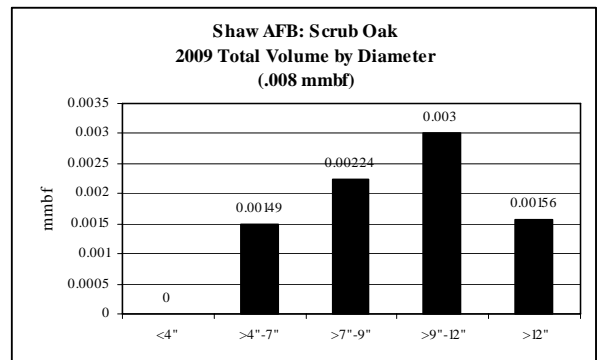
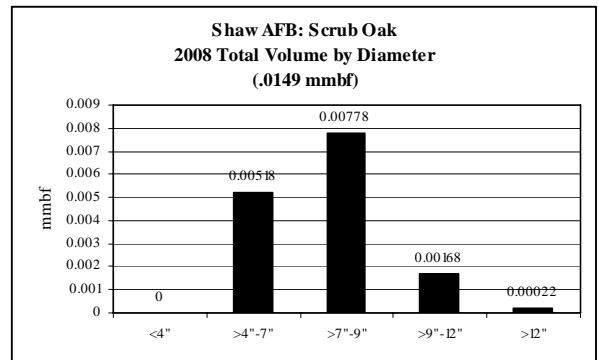
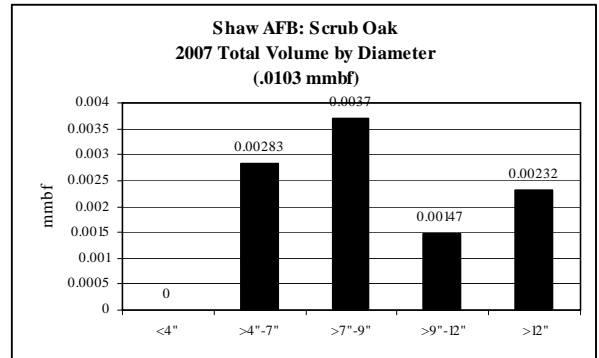
Note: No volume for <4" dbh



**South Carolina 1: Scrub Oak CROP offering/removal '06 – '10
(by agency)**

ROM # S Oak 1.3

gT = green tons (up to 7" dbh)
S = small log mmbf (>7"-12" dbh)
L = large log mmbf (>12" dbh)



C

Scrub Oak Shaw AFB	5-yr = .0434 mmbf
	<ul style="list-style-type: none"> • Unlevel supply from year to year
gT = 71.04	<ul style="list-style-type: none"> • <4" = 0% (0 mmbf) • >4"-7" = 28% (.012 mmbf)
S = .026	<ul style="list-style-type: none"> • >7"-9" = 39% (.017 mmbf) • >9"-12" = 21% (.009 mmbf)
L = .0054	<ul style="list-style-type: none"> • >12" = 12% (.0054 mmbf)