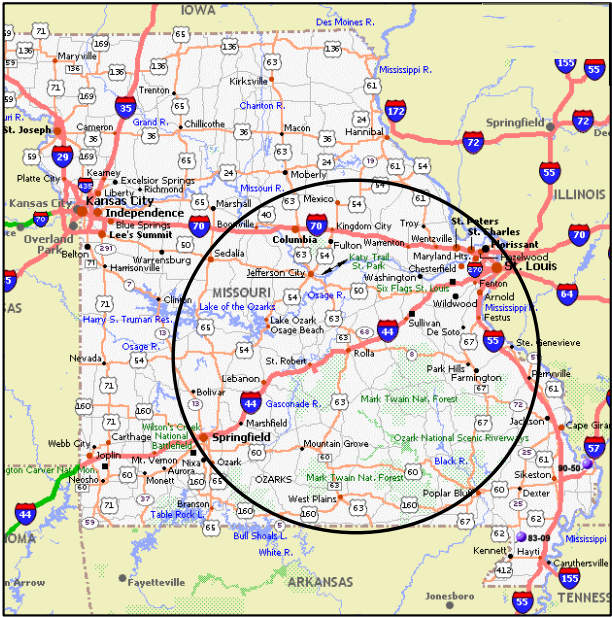


Missouri CROP
A Summary of CROP Landscape Analyses Results
(2009 – 2013)

Missouri CROP:
Center Point:
Rolla
(100-mile radius)

- 1 National Forest
- State lands
- Fort Leonard Wood Army Base
- 60 Counties



gT = green tons (up to 7" dbh)
 S = small log mmbf (>7"-12" dbh)
 L = large log mmbf (>12" dbh)

<i>By Species</i>	5-yr total (Biomass = gT)	5-yr total Small log (mmbf)	5-yr total Large log (mmbf)
Oak species (77% of 5-yr. total)	597,900	99.48	160.45
Short-leaf pine (8% of 5-yr. total)	41,325	19.76	11.60
Eastern red cedar (1% of 5-yr. total)	3,350	5.4	0.3
Oak/pine mix (13% of 5-yr. total)	312,500	1.9	0
% of log volume		42%	58%

Mark Twain NF: (gT= 727,705; Small log = 93.487 mmbf; Large log = 121.2 mmbf)

Ranger Districts	5-yr total (Biomass = gT)	5-yr total Small log (mmbf)	5-yr total Large log (mmbf)
Ava/Cassville/Willow Springs	111,705	20.387	21.3
Houston/Rolla/Cedar Creek	100,000	9.5	20
Potosi/Fredericktown	160,000	15.5	35
Salem	132,500	7.5	28.5
Doniphan/Eleven Point/ Poplar Bluff	223,500	40.6	16.4

Dept. of Conservation: (gT= 216,000; Small log = 32 mmbf; Large log = 48 mmbf)

Counties	5-yr total (Biomass = gT)	5-yr total Small log (mmbf)	5-yr total Large log (mmbf)
Shannon/Reynolds	162,000	24	36
Butler	13,500	2	3
Bollinger	13,500	2	3
Dent	13,500	2	3
Wayne	13,500	2	3

Fort Leonard Wood: (gT= 11,370; Small log = 1.06 mmbf; Large log = 3.15 mmbf)

Fort Leonard Wood	5-yr total (Biomass = gT)	5-yr total Small log (mmbf)	5-yr total Large log (mmbf)
Fort Leonard Wood	11,370	1.06	3.15

Missouri: All Agencies CROP offering/removal '09 - '13
(gT = 955,074 / S = 126.55 mmbf / L = 172.348 mmbf)
(489.913 total mmbf)

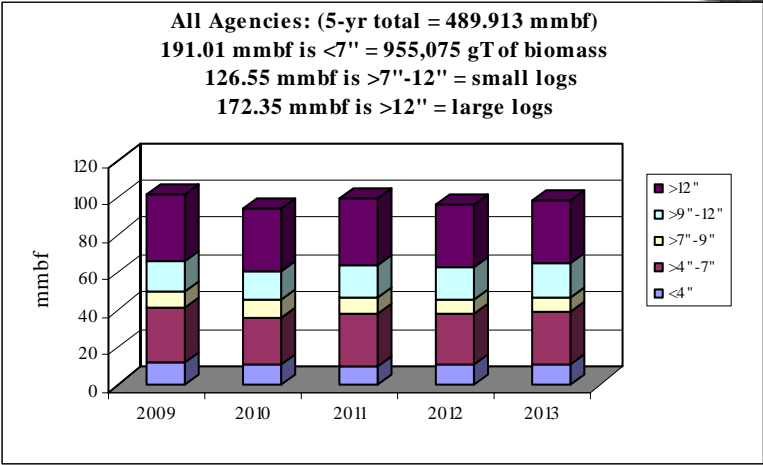
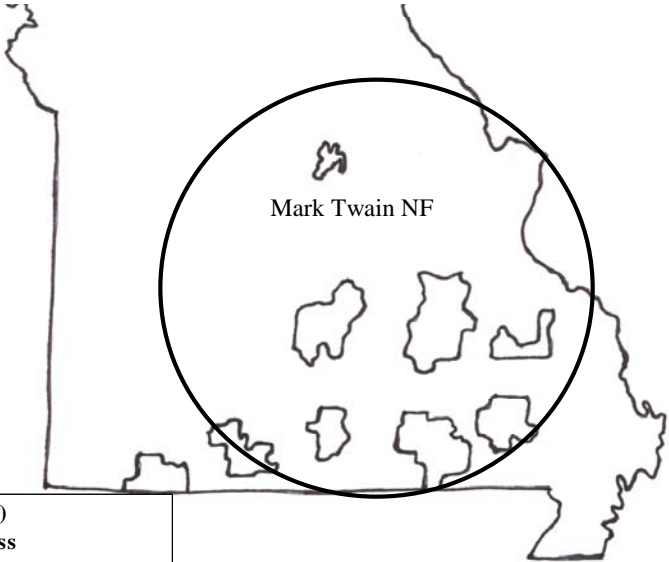
gT = green tons (up to 7" dbh)
 S = small log mmbf (>7"-12" dbh)
 L = large log mmbf (>12" dbh)

Mark Twain NF: 73%
(gT = 727,705 / S = 93.487 / L = 121.2)

Ft. Leonard Wood: 1%
(gT = 11,369 / S = 1.063 / L = 3.148)

***MO Dept. of Conservation: 25%**
(gT = 216,000 / S = 32 / L = 48)
 *some volume not currently accessible by roads

MO Dept. of Transportation:
Not able to calculate volume but will
conduct clearing projects on ~500 acres
over next five years.
(90% acreage to be cleared in '09-'10)

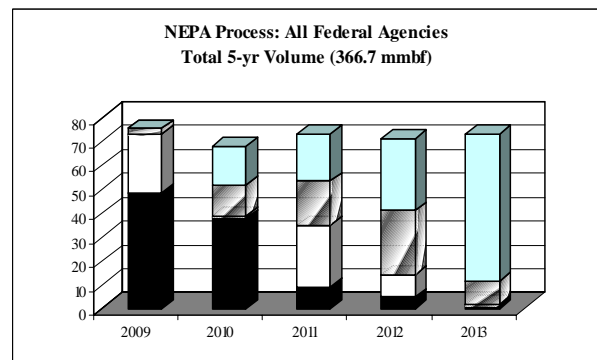
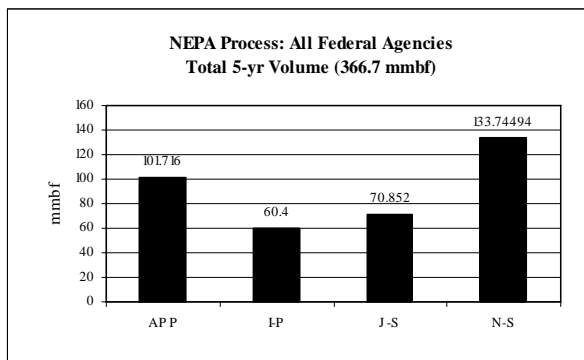
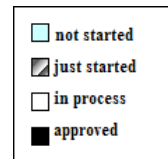


All Agency/Species	gT	mmbf	
	Biomass	Small Log	Large Log
2009	203097.2	25.613	35.273
2010	179504.5	24.427	33.562
2011	189382.9	25.615	35.795
2012	190143.2	24.995	33.671
2013	192946.9	25.9	34.047
Totals	955074.7	126.55	172.348
%	39%	26%	35%
mmbf	191.01494		

489.91294

NEPA Process – All Federal Agencies (Mark Twain NF & Fort Leonard Wood):
 Total 5-yr volume (366.71 mmbf; includes gT as mmbf)

	<i>mmbf</i>	<i>% of total</i>
Approved	101.72	28%
In process	60.4	16%
Just started	70.85	19%
Not started	133.74	36%



Missouri: All Agencies CROP offering/removal '09 – '13
(gT = 955,075 / S = 126.55 mmbf / L = 172,348 mmbf)
(489.913 total mmbf)

gT = green tons (up to 7" dbh)
 S = small log mmbf (>7"-12" dbh)
 L = large log mmbf (>12" dbh)

Mark Twain NF:

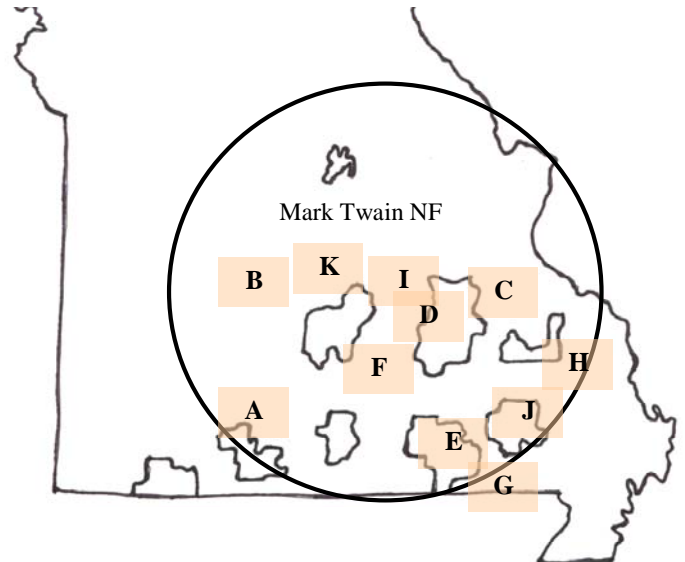
- A Ava/Cassville/Willow Springs RD ($gT = 111,705 / S = 20.387 / L = 21.3$)
- B Houston/Rolla/Cedar Creek RD ($gT = 100,000 / S = 9.5 / L = 20$)
- C Potosi/Fredericktown RD ($gT = 160,000 / S = 15.5 / L = 35$)
- D Salem RD ($gT = 132,500 / S = 7.5 / L = 28.5$)
- E Doniphan/Eleven Pt/Poplar Blf RD ($gT = 223,500 / S = 40.6 / L = 16.4$)

MO Dept. of Conservation:

- F Shannon/Reynolds Co. ($gT = 162,000 / S = 24 / L = 36$)
- G Butler Co. ($gT = 13,500 / S = 2 / L = 3$)
- H Bollinger Co. ($gT = 13,500 / S = 2 / L = 3$)
- I Dent Co. ($gT = 13,500 / S = 2 / L = 3$)
- J Wayne Co. ($gT = 13,500 / S = 2 / L = 3$)

Ft. Leonard Wood:

- K Ft. Leonard Wood ($gT = 11,370 / S = 1.063 / L = 3.148$)



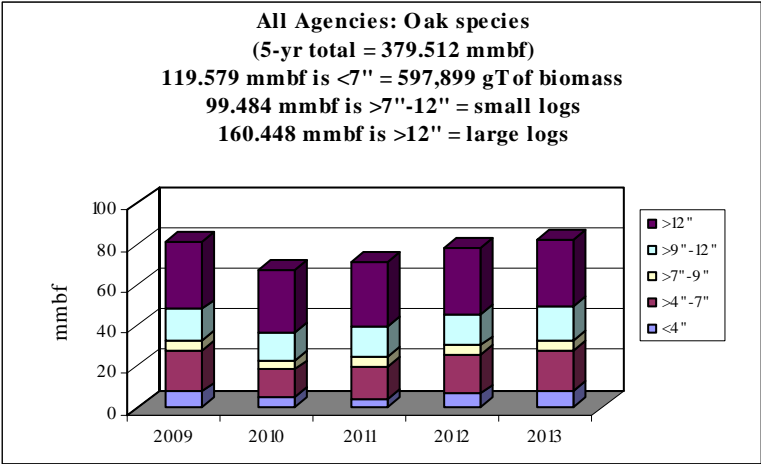
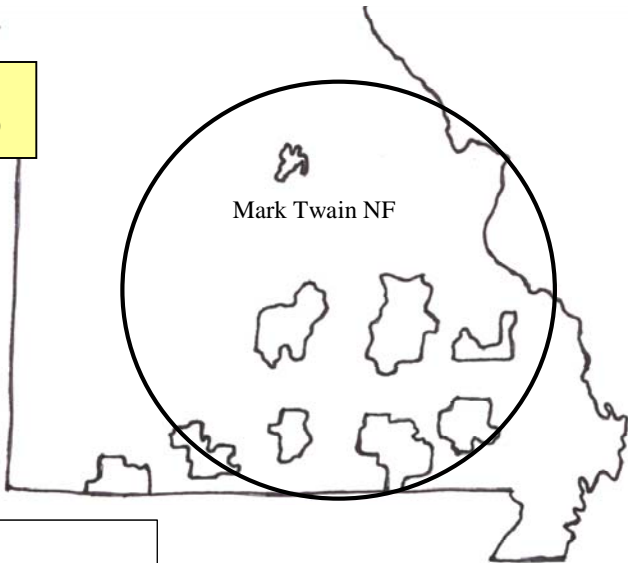
Missouri: Oak species CROP offering/removal '09 – '13
(gT = 597,900 / S = 99.484 mmbf / L = 160.448 mmbf)
(379.512 total mmbf)

gT = green tons (up to 7" dbh)
 S = small log mmbf (>7"-12" dbh)
 L = large log mmbf (>12" dbh)

Mark Twain NF: 66%
(gT = 370,530 / S = 66.421 / L = 109.3)

***MO Dept. of Conservation: 32%**
(gT = 216,000 / S = 32 / L = 48)
 *some volume not currently accessible by roads

Ft. Leonard Wood: 2%
(gT = 11,369 / S = 1.063 / L = 3.148)



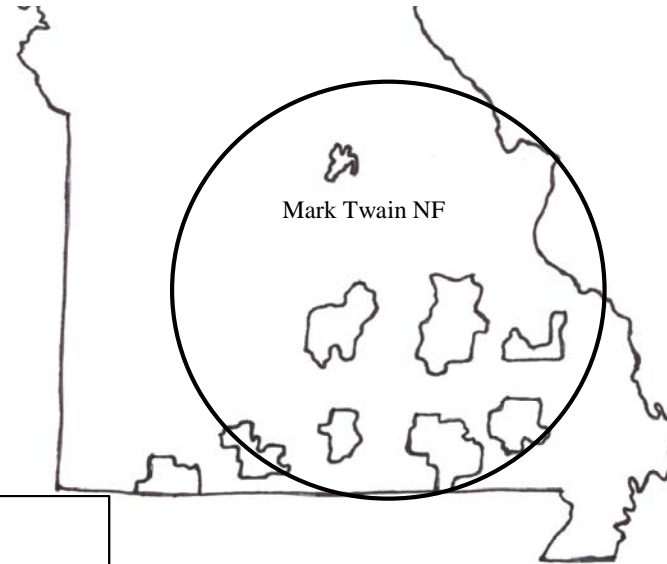
	gT	mmbf	
Oak species	Biomass	Small Log	Large Log
2009	137747.2	20.513	32.873
2010	92089.5	18.044	30.762
2011	100972.9	19.232	32.195
2012	127143.2	20.395	32.071
2013	139946.9	21.3	32.547
Totals	597899.7	99.484	160.448
%	32%	26%	42%
mmbf	119.57994		

379.51194

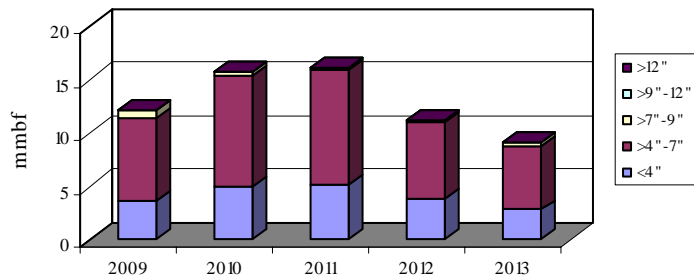
Missouri: Oak/pine CROP offering/removal '09 – '13
(gT = 312,500 / S = 1.9 mmbf / L = 0 mmbf)
(64.4 total mmbf)

gT = green tons (up to 7" dbh)
 S = small log mmbf (>7"-12" dbh)
 L = large log mmbf (>12" dbh)

Mark Twain NF: 100%
(gT = 312,500 / S = 1.9 / L = 0)



All Agencies: Oak/pine
(5-yr total = 64.4 mmbf)
42 mmbf is <7" = 312,500 gT of biomass
1.9 mmbf is >7"-12" = small logs
0 mmbf is >12" = large logs



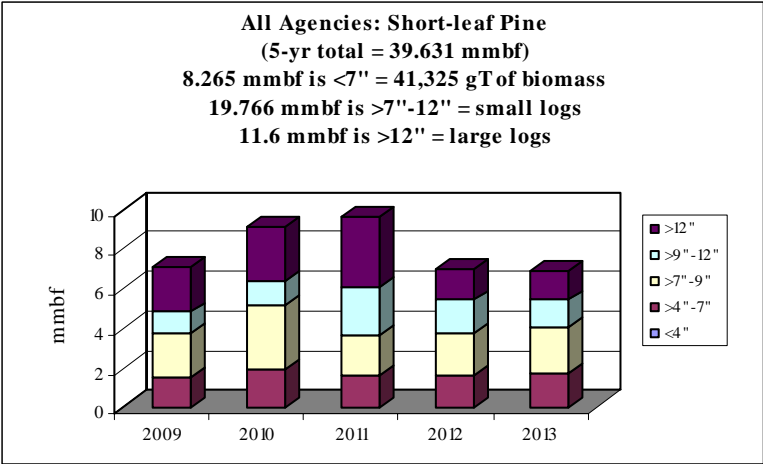
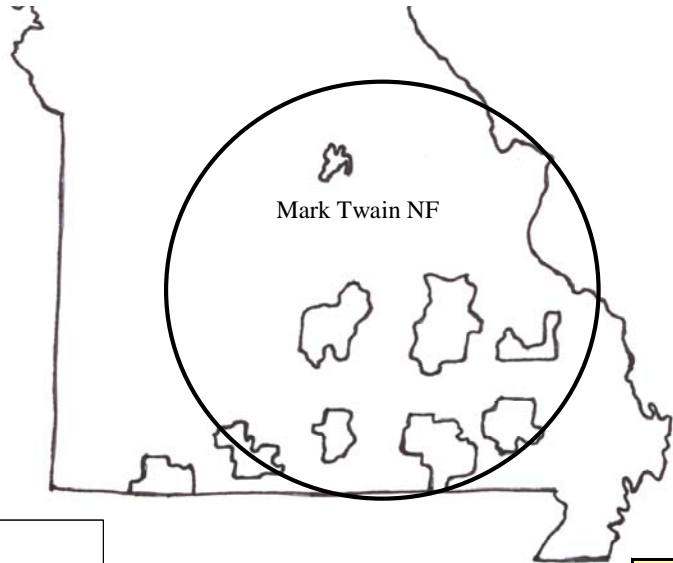
Oak/pine	gT	mmbf	
	Biomass	Small Log	Large Log
2009	57000	0.7	0
2010	77000	0.3	0
2011	79500	0.3	0
2012	55000	0.3	0
2013	44000	0.3	0
Totals	312500	1.9	0
%	97%	3%	0%
mmbf	62.5		

64.4

Missouri: Short-leaf Pine CROP offering/removal '09 – '13
(gT = 41,325 / S = 19.766 mmbf / L = 11.6 mmbf)
(39.631 total mmbf)

gT = green tons (up to 7" dbh)
 S = small log mmbf (>7"-12" dbh)
 L = large log mmbf (>12" dbh)

Mark Twain NF: 100%
(gT = 41,325 / S = 19.766 / L = 11.6)



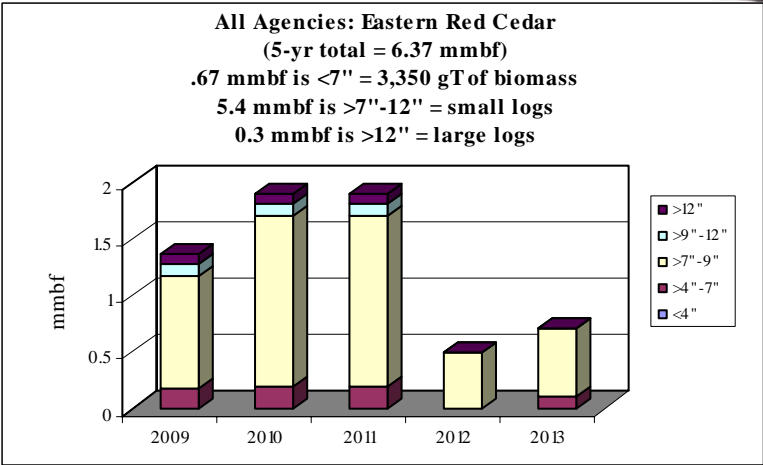
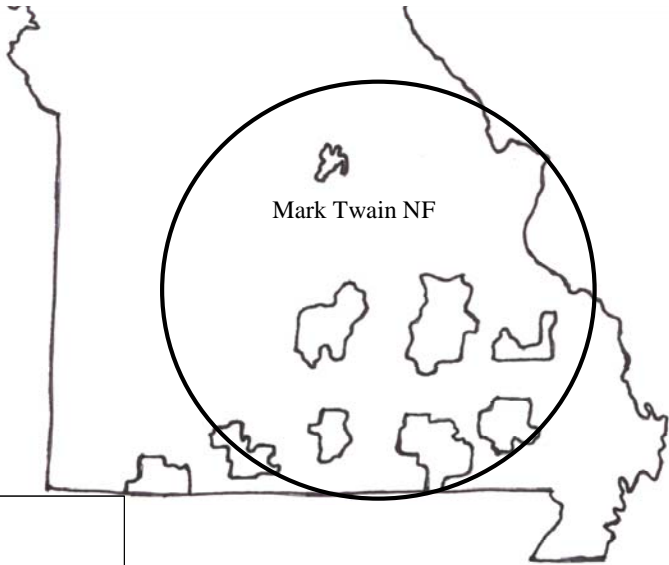
Short-leaf Pine	gT	mmbf	
	Biomass	Small Log	Large Log
2009	7500	3.3	2.3
2010	9415	4.483	2.7
2011	7910	4.483	3.5
2012	8000	3.8	1.6
2013	8500	3.7	1.5
Totals	41325	19.766	11.6
%	21%	50%	29%
mmbf	8.265		

39.631

Missouri: Eastern Red Cedar CROP offering/removal '09 – '13
(gT = 3,350 / S = 5.4 mmbf / L = .3 mmbf)
(6.37 total mmbf)

gT = green tons (up to 7" dbh)
 S = small log mmbf (>7"-12" dbh)
 L = large log mmbf (>12" dbh)

Mark Twain NF: 100%
(gT = 3,350 / S = 5.4 / L = .3)



	gT	mmbf	
Eastern Red Cedar	Biomass	Small Log	Large Log
2009	850	1.1	0.1
2010	1000	1.6	0.1
2011	1000	1.6	0.1
2012	0	0.5	0
2013	500	0.6	0
Totals	3350	5.4	0.3
%	11%	85%	5%
mmbf	0.67		

6.37

For more information contact:

Catherine M. Mater:

President—Mater Ltd.

Senior Fellow – The Pinchot Institute for Conservation

Corvallis, Oregon; Washington, DC

tel: (541) 753-7335 fax: (541) 752-2952; cell: (541) 760-5526

E-mail: catherine@mater.com

Edmund Gee:

Nat'l Woody Biomass Utilization Team Leader

Nat'l Partnership Coordinator USFS

Washington DC

tel: (202) 205-1787 fax: (202) 205-1045 cell: (202) 236-5153

E-mail: eagee@fs.fed.us