

Mississippi CROP*

A Summary of CROP Landscape Analyses Results
(2007 – 2011)

*This CROP summary covers 3 resource sections:

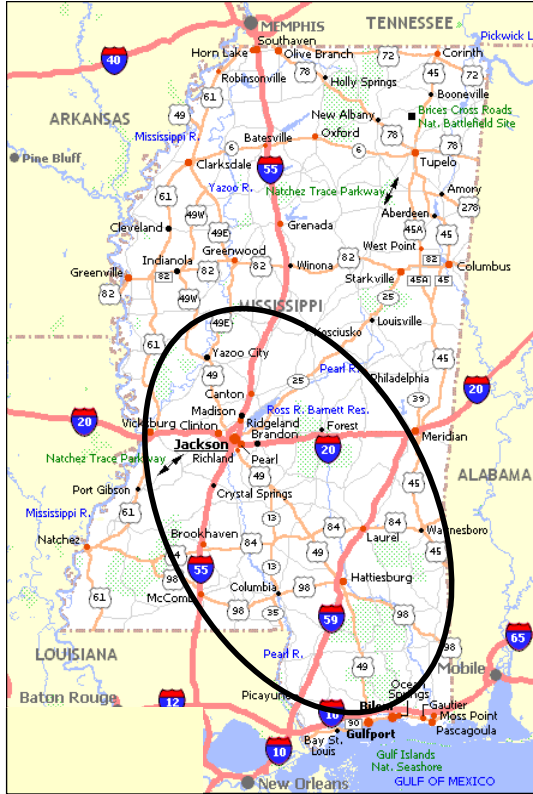
Section A: Resource offering/removal off of **State & Federal lands**, (pgs 2 – 15).

Section B: Resource offering/removal estimates off of **16th Section lands**, (pgs 16 – 26).

Section C: **Katrina-downed** pine & hardwood resource offering, (pgs 27 – 36).

Mississippi CROP

A Summary of CROP Landscape Analyses Results
(2007 – 2011)



Mississippi CROP:
Center Point: Mt. Olive, MS
(100 miles N/S; 60 miles E/W)

4 National Forests
5 Ranger Districts
43 Counties*
State Lands
16th Section Lands
Private Lands (Katrina-downed)
(*no removal planned)

gT = green tons (up to 7" dbh)
S = small log mmbf (>7"-12" dbh)
L = large log mmbf (>12" dbh)

<i>NF & State removals by Species*</i>	5-yr total (Biomass = gT)	5-yr total Small log (mmbf)	5-yr total Large log (mmbf)
Red oak (3% of 5-yr. total)	1,152	2.5386	6.387
Hardwoods (2% of 5-yr. total)	192	.9231	3.0645
Green ash (1% of 5-yr. total)	0	.36	1.44
Gum species (4% of 5-yr. total)	4,472	5.1311	3.9823
Southern yellow pine (80% of 5-yr. total)	157,245	87.4895	93.734
Oak species (2% of 5-yr. total)	3,000	3.365	1.9078
Poplar (1% of 5-yr. total)	974	1.0432	.5522
Hickory (0% of 5-yr. total)	590	.697	.4232
Waxy species (8% of 5-yr. total)	60,000	8	0

De Soto NF: (gT= 136,250; Small log = 63.123 mmbf; Large log = 38.063 mmbf)

Ranger Districts	5-yr total (Biomass = gT) <7" dbh	5-yr total Small log (mmbf) 7"-12" dbh	5-yr total Large log (mmbf) >12" dbh
De Soto RD	100,000	26.873	9.063
Chickasawhay RD	36,250	36.25	29

Bienville, Homochitto, & Delta NFs:

Ranger District	5-yr total (Biomass = gT) <7" dbh	5-yr total Small log (mmbf) 7"-12" dbh	5-yr total Large log (mmbf) >12" dbh
Bienville NF (RD)	62,400	25.32	25
Homochitto NF (RD)	1,592	2.092	1.435
Delta NF (RD)	0	3	12

MS Agencies: (gT= 0; Small log = .119 mmbf; Large log = 1.15 mmbf)

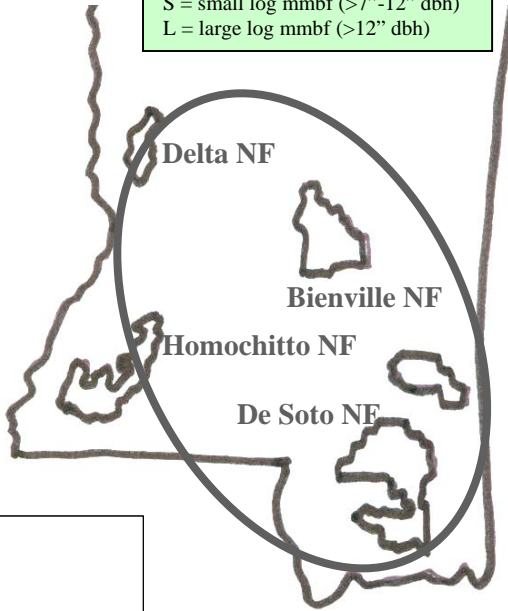
Agency	5-yr total (Biomass = gT) <7" dbh	5-yr total Small log (mmbf) 7"-12" dbh	5-yr total Large log (mmbf) >12" dbh
MS DWF &P	0	.119	1.15

Mississippi: All Agencies CROP offering/removal '07 - '11
(gT = 227,625 / S = 109.547 mmbf / L = 111.491 mmbf)

gT = green tons (up to 7" dbh)
 S = small log mmbf (>7"-12" dbh)
 L = large log mmbf (>12" dbh)

Delta NF: 1 RD - 6%
(gT = 0 / S = 3 / L = 12)

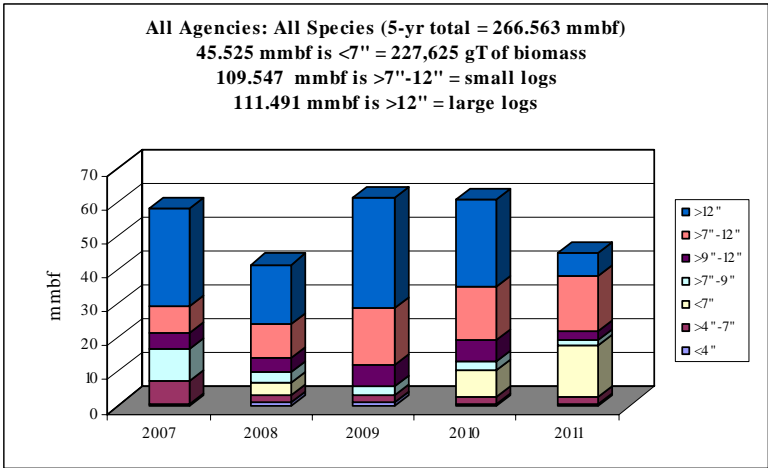
Homochitto NF: 1 RD - 22%
(gT = 28,975 / S = 17.985 / L = 35.278)



Bienville NF: 1 RD - 24%
(gT = 62,400 / S = 25.32 / L = 25)

De Soto NF: 2 RDs - 48%
(gT = 136,250 / S = 63.123 / L = 38.063)

MS DWF & P - <1%
(gT = 0 / S = .119 / L = 1.15)



	gT	mmbf	
	Biomass	Small Log	Large Log
2007	37605	21.855	28.586
2008	34800	16.92	17.66
2009	15190	25.6775	32.609
2010	51890	24.815	25.486
2011	88140	20.28	7.15
Totals	227625	109.5475	111.491
%	17%	41%	42%
mmbf	45.525		

266.5635

Mississippi: All Agencies CROP offering/removal '07 - '11
(gT = 227,625 / S = 109.547 mmbf / L = 111.491 mmbf)

Delta NF:

A Delta RD (gT = 0 / S = 3 mmbf / L = 12 mmbf)*

Homochitto NF:

B Homochitto RD (gT = 28,975 / S = 17.98 mmbf / L = 35.28 mmbf)

De Soto NF:

C De Soto RD (gT = 100,000 / S = 26.87 mmbf / L = 9.06 mmbf)

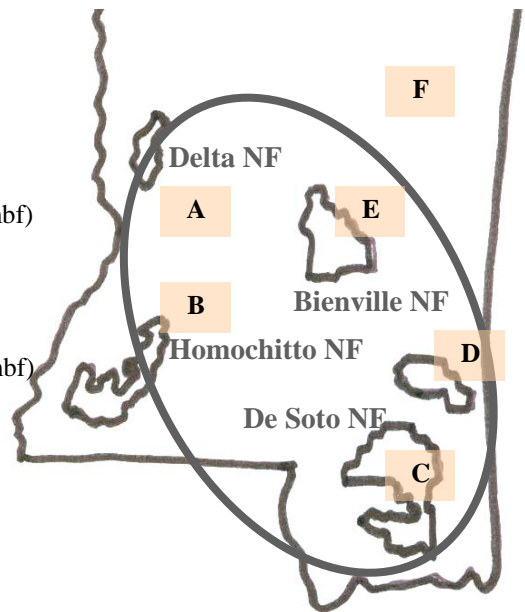
D Chickasawhay RD (gT = 36,250 / S = 36.25 mmbf / L = 29 mmbf)

Bienville NF:

E Bienville RD (gT = 62,400 / S = 25.32 mmbf / L = 25 mmbf)

MS DWF & P:

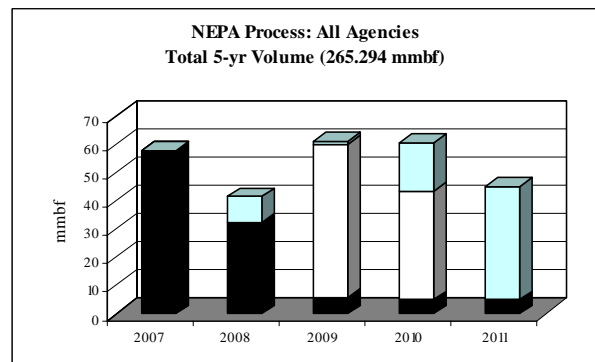
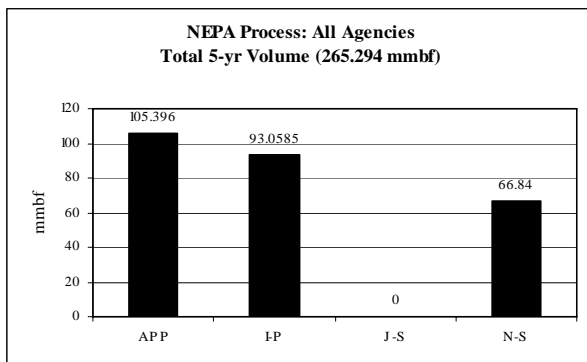
F MS DWF & P (gT = 0 / S = .119 mmbf / L = 1.15 mmbf)



* 5-yr volume offering

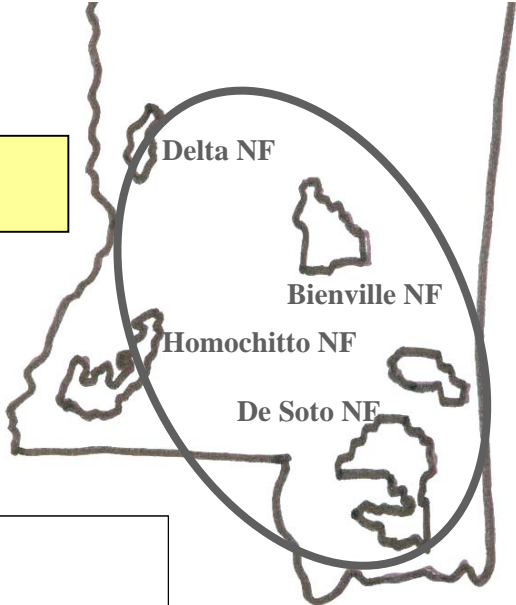
Mississippi NEPA Process – All Agencies:
 Total 5-yr volume (265.294 mmbf; includes gT as mmbf)

	<i>mmbf</i>	<i>% of total</i>
<i>Approved (APP)</i>	105.396	40%
<i>In process (I-P)</i>	93.058	35%
<i>Just started (J-S)</i>	0	0%
<i>Not started (N-S)</i>	66.84	25%



Mississippi: Southern Yellow Pine CROP offering/removal '07 - '11
(gT = 157,245 / S = 87.489 mmbf / L = 93.734 mmbf)

gT = green tons (up to 7" dbh)
 S = small log mmbf (>7"-12" dbh)
 L = large log mmbf (>12" dbh)

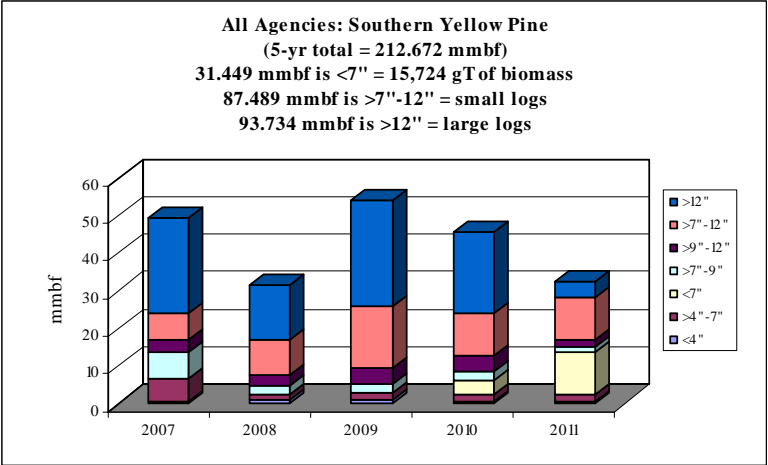


Homochitto NF: 1 RD – 23%
(gT = 24,995 / S = 12.746 / L = 31.691)

Bienville NF: 1 RD – 25%
(gT = 56,000 / S = 19.55 / L = 22.85)

MS DWF & P – <1%
(gT = 0 / S = 0.07 / L = 1.13)

De Soto NF: 2 RDs – 51%
(gT = 76,250 / S = 55.123 / L = 38.063)



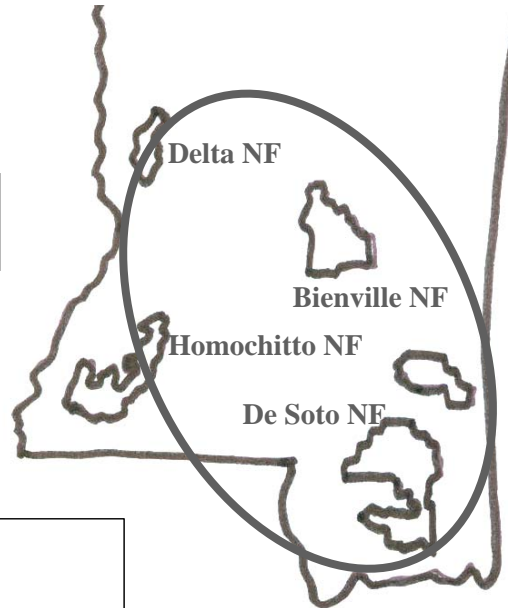
	gT	mmbf	
	Biomass	Small Log	Large Log
2007	32725	17.51	25.153
2008	12300	14.51	14.59
2009	14190	22.7815	28.392
2010	30890	17.918	21.269
2011	67140	14.77	4.33
Totals	157245	87.4895	93.734
%	15%	41%	44%
mmbf	31.449		

212.6725

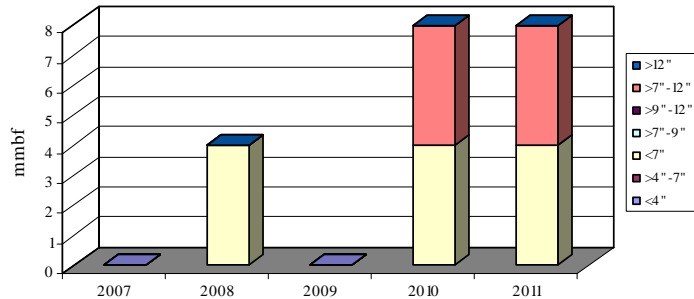
**Mississippi: Waxy Species CROP offering/removal '07 – '11
(gT = 60,000 / S = 8 mmbf / L = 0 mmbf)**

gT = green tons (up to 7" dbh)
S = small log mmbf (>7"-12" dbh)
L = large log mmbf (>12" dbh)

**De Soto NF: 1 RD – 100%
(gT = 60,000 / S = 8 / L = 0)**



All Agencies: Waxy Species (5-yr total = 20 mmbf)
12 mmbf is <7" = 60,000 gT of biomass
8 mmbf is >7"-12" = small logs
0 mmbf is >12" = large logs



	gT	mmbf	
	Biomass	Small Log	Large Log
2007	0	0	0
2008	20000	0	0
2009	0	0	0
2010	20000	4	0
2011	20000	4	0
Totals	60000	8	0
%	60%	40%	0%
mmbf	12		

Mississippi: Gum Species CROP offering/removal '07 – '11
(gT = 4,472 / S = 5.131 mmbf / L = 3.982 mmbf)

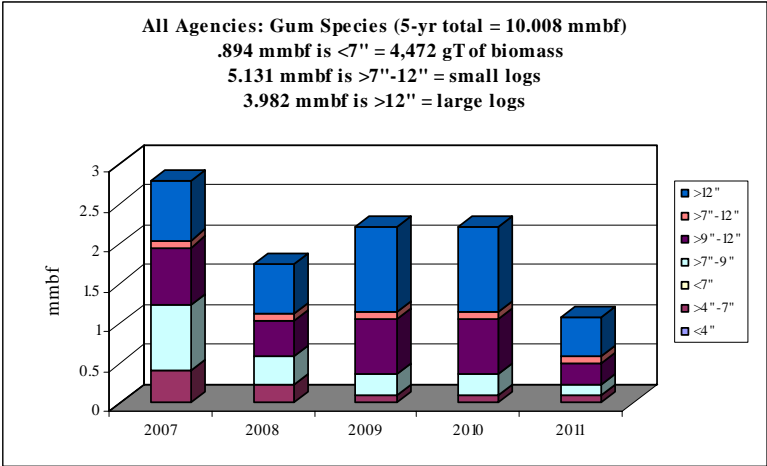
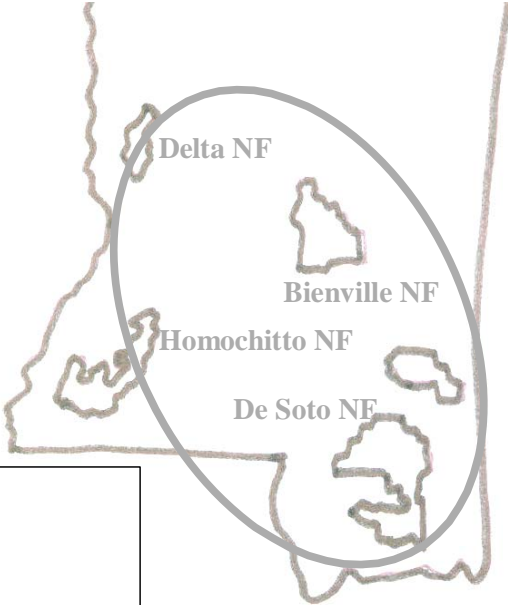
gT = green tons (up to 7" dbh)
 S = small log mmbf (>7"-12" dbh)
 L = large log mmbf (>12" dbh)

Delta NF: 1 RD – 20%
(gT = 0 / S = .39 / L = 1.56)

Homochitto NF: 1 RD – 38%
(gT = 1,592 / S = 2.096 / L = 1.435)

Bienville NF: 1 RD – 41%
(gT = 2,880 / S = 2.596 / L = .967)

MS DWF & P – <1%
(gT = 0 / S = .049 / L = .02)



	gT	mmbf	
	Biomass	Small Log	Large Log
2007	1997	1.6455	0.7362
2008	1125	0.898	0.6135
2009	450	1.0468	1.0658
2010	450	1.0478	1.0658
2011	450	0.493	0.501
Totals	4472	5.1311	3.9823
%	9%	51%	40%
mmbf	0.8944		

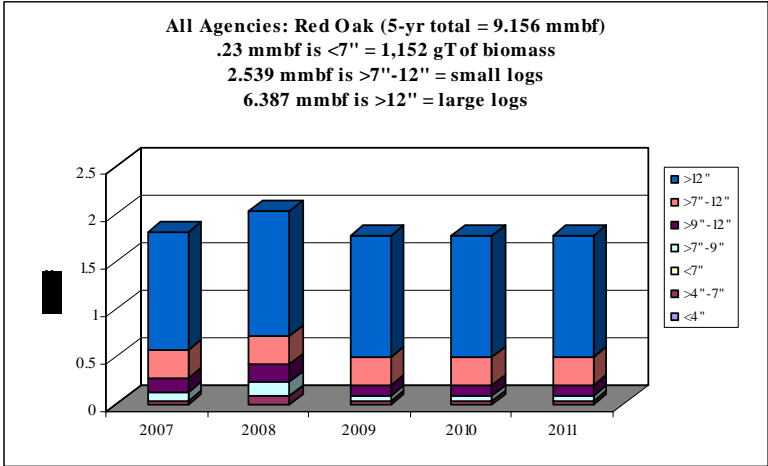
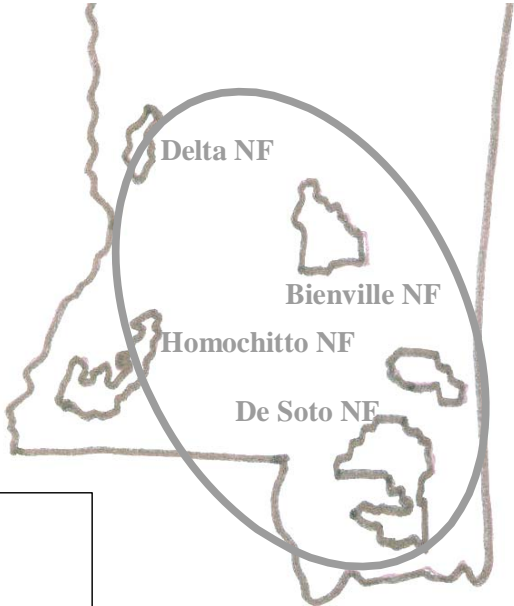
10.0078

Mississippi: Red Oak CROP offering/removal '07 – '11
(gT = 1,152 / S = 2.539 mmbf / L = 6.387 mmbf)

gT = green tons (up to 7" dbh)
 S = small log mmbf (>7"-12" dbh)
 L = large log mmbf (>12" dbh)

Delta NF: 1 RD – 82%
(gT = 0 / S = 1.5 / L = 6)

Bienville NF: 1 RD – 18%
(gT = 1,152 / S = 1.039 / L = .387)



	gT	mmbf	
	Biomass	Small Log	Large Log
2007	162	0.5286	1.2396
2008	450	0.624	1.3206
2009	180	0.462	1.2756
2010	180	0.462	1.2756
2011	180	0.462	1.2756
Totals	1152	2.5386	6.387
%	3%	28%	70%
mmbf	0.2304		

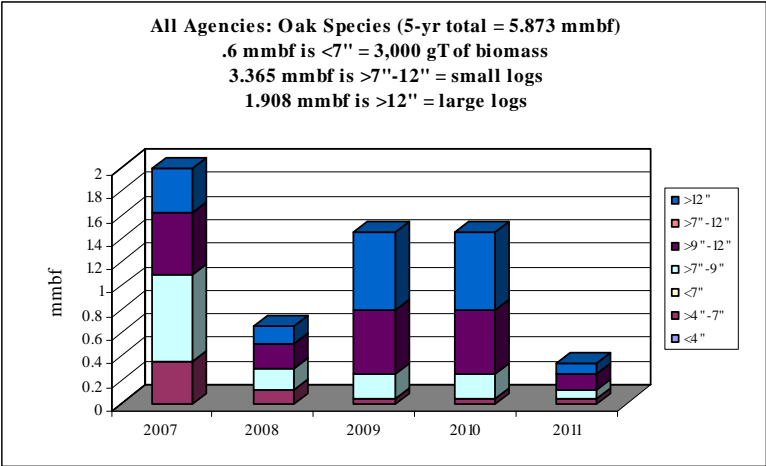
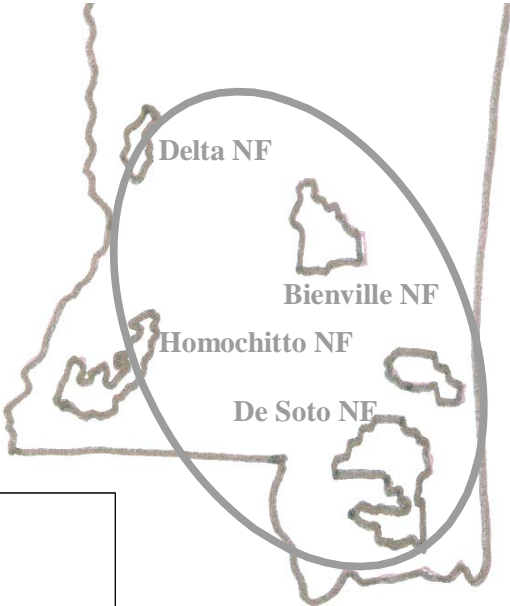
9.156

**Mississippi: Oak Species CROP offering/removal '07 – '11
(gT = 3,000 / S = 3.365 mmbf / L = 1.908 mmbf)**

gT = green tons (up to 7" dbh)
S = small log mmbf (>7"-12" dbh)
L = large log mmbf (>12" dbh)

Homochitto NF: 1 RD – 66%
(gT = 1,592 / S = 2.096 / L = 1.435)

Bienville NF: 1 RD – 34%
(gT = 1,408 / S = 1.269 / L = .473)



	gT	mmbf	
	Biomass	Small Log	Large Log
2007	1790	1.2654	0.3736
2008	550	0.396	0.1474
2009	220	0.7528	0.6472
2010	220	0.7528	0.6472
2011	220	0.198	0.0924
Totals	3000	3.365	1.9078
%	10%	57%	32%
mmbf	0.6		

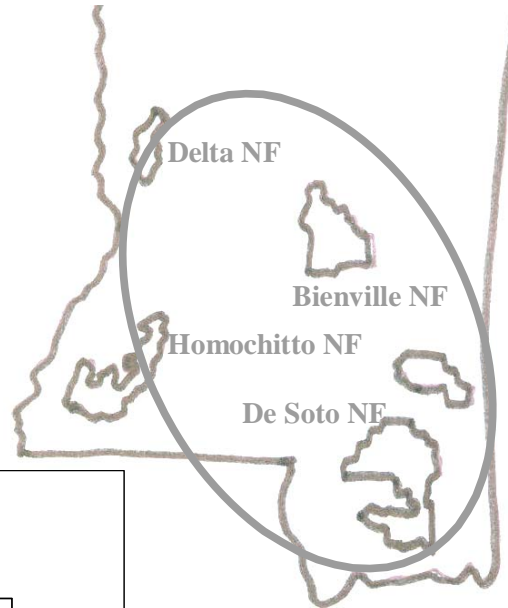
5.8728

Mississippi: Hardwoods CROP offering/removal '07 - '11
(gT = 192 / S = .923 mmbf / L = 3.064 mmbf)

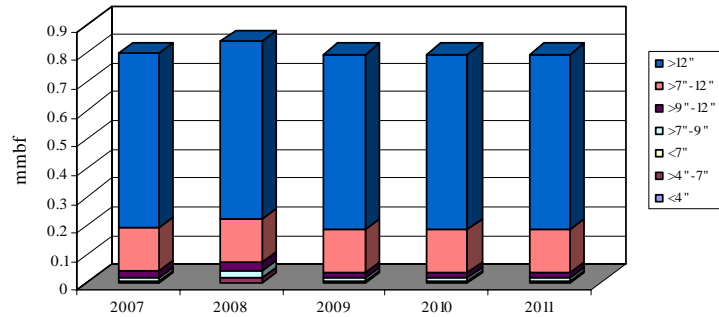
gT = green tons (up to 7" dbh)
 S = small log mmbf (>7"-12" dbh)
 L = large log mmbf (>12" dbh)

Delta NF: 1 NF - 93%
(gT = 0 / S = .75 / L = 3)

Bienville NF: 1 RD - 7%
(gT = 192 / S = .173 / L = .064)



All Agencies: Hardwoods (5-yr total = 4.026 mmbf)
.038 mmbf is <7" = 192 gT of biomass
.923 mmbf is >7"-12" = small logs
3.064 mmbf is >12" = large logs



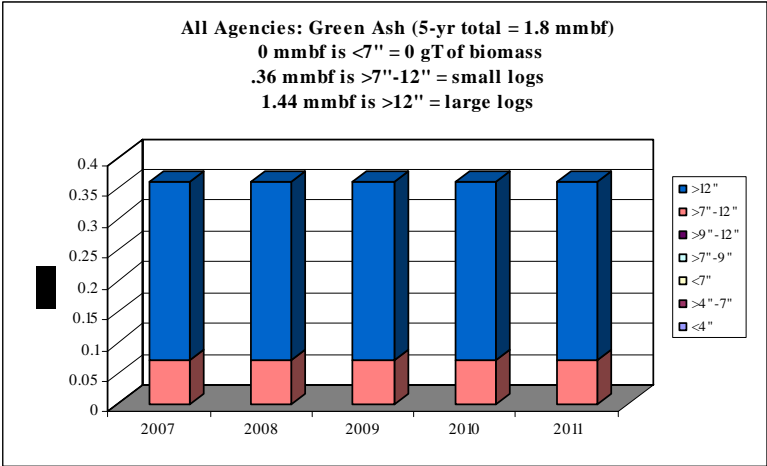
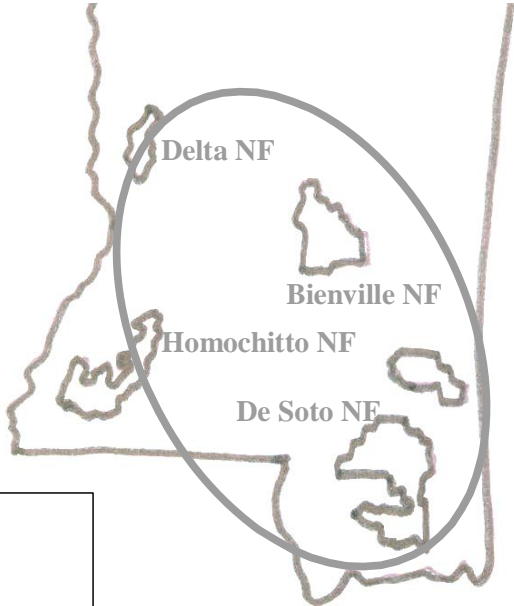
	gT	mmbf	
	Biomass	Small Log	Large Log
2007	27	0.1881	0.6066
2008	75	0.204	0.6201
2009	30	0.177	0.6126
2010	30	0.177	0.6126
2011	30	0.177	0.6126
Totals	192	0.9231	3.0645
%	1%	23%	76%
mmbf	0.0384		

4.026

Mississippi: Green Ash CROP offering/removal '07 – '11
(gT = 0 / S = .36 mmbf / L = 1.44 mmbf)

gT = green tons (up to 7" dbh)
 S = small log mmbf (>7"-12" dbh)
 L = large log mmbf (>12" dbh)

Delta NF: 1 RD – 100%
(gT = 0 / S = .36 / L = 1.44)



	gT	mmbf	
	Biomass	Small Log	Large Log
2007	0	0.072	0.288
2008	0	0.072	0.288
2009	0	0.072	0.288
2010	0	0.072	0.288
2011	0	0.072	0.288
Totals	0	0.36	1.44
%	0%	20%	80%
mmbf	0		

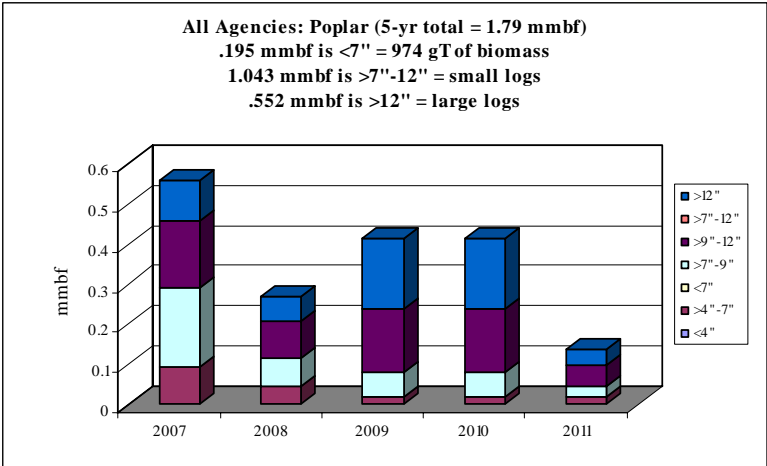
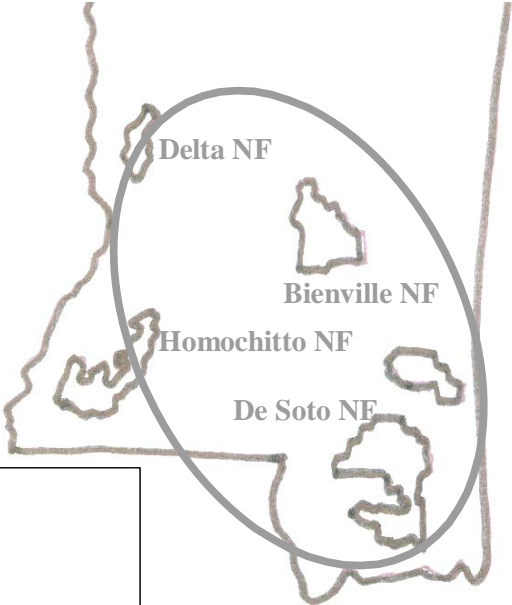
1.8

Mississippi: Poplar CROP offering/removal '07 – '11
(gT = 974 / S = 1.043 mmbf / L = .552 mmbf)

gT = green tons (up to 7" dbh)
 S = small log mmbf (>7"-12" dbh)
 L = large log mmbf (>12" dbh)

Homochitto NF: 1 RD – 54%
(gT = 398 / S = .524 / L = .359)

Bienville NF: 1 RD – 46%
(gT = 576 / S = .519 / L = .193)



	gT	mmbf	
	Biomass	Small Log	Large Log
2007	479	0.3608	0.1011
2008	225	0.162	0.0603
2009	90	0.2197	0.1765
2010	90	0.2197	0.1765
2011	90	0.081	0.0378
Totals	974	1.0432	0.5522
%	11%	58%	31%
mmbf	0.1948		

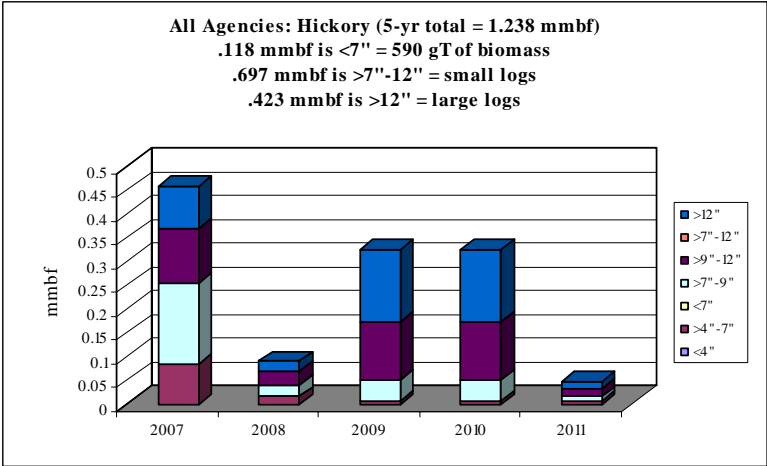
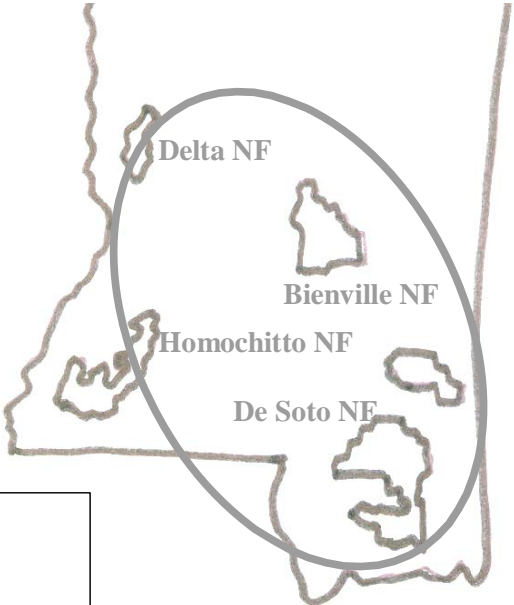
1.7902

Mississippi: *Hickory* CROP offering/removal '07 – '11
(gT = 590 / S = .697 mmbf / L = .423 mmbf)

gT = green tons (up to 7" dbh)
 S = small log mmbf (>7"-12" dbh)
 L = large log mmbf (>12" dbh)

Homochitto NF: 1 RD – 78%
(gT = 398 / S = .524 / L = .359)

Bienville NF: 1 RD – 22%
(gT = 192 / S = .173 / L = .064)



	gT	mmbf	
	Biomass	Small Log	Large Log
2007	425	0.2846	0.0879
2008	75	0.054	0.0201
2009	30	0.1657	0.1513
2010	30	0.1657	0.1513
2011	30	0.027	0.0126
Totals	590	0.697	0.4232
%	10%	56%	34%
mmbf	0.118		

1.2382

Assumptions

16th Section lands: (lands managed by state for benefit of school systems):

- 43 counties in CROP landscape with 16th Section lands
- Data & diameter breakout received from MIFI.
- Between '01 through '05, amount in CROP landscape removed was:
 - Pine: 99 mmbf + 396,000 gT
 - Hardwood: 32 mmbf + 114,000 gT
- Of 43 counties, only 18 counties experienced annual removals between '01 – '05.
- Estimates in CROP based only on those counties with historical annual removals from '01 – '05. Averaged annual removal volumes calculated.

**Mississippi-16th Section Lands: All Regions in CROP Landscape
 averaged annual offering/removal (based on '01-'05 performance)*
 (gT = 71,113 / S = 6.159 mmbf / L = 7.746 mmbf)**

*only those counties with 16th Section
 timber removal each year between '01 - '05
 (18 out of 43).

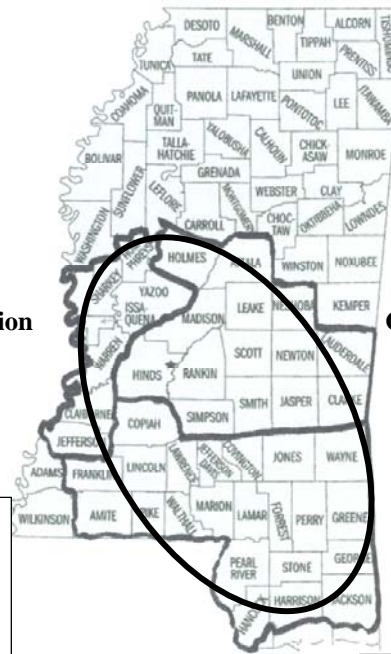
gT = green tons (up to 7" dbh)
 S = small log mmbf (>7"-12" dbh)
 L = large log mmbf (>12" dbh)

Delta/River Region: 2 of 7 counties - 10%
 (gT = 3,581 / S = .809 / L = 1.325)

Central Region: 7 of 14 counties - 40%
 (gT = 31,621 / S = 2.185 / L = 2.651)

Delta/River Region

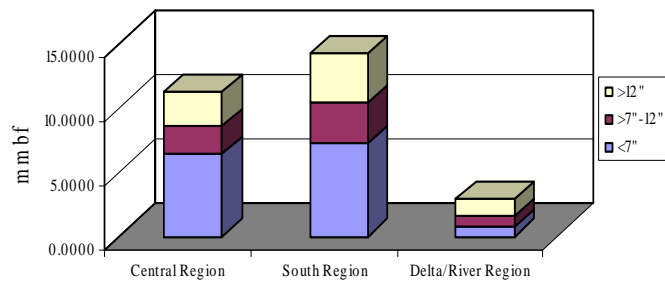
Central Region



South Region

South Region: 9 of 22 counties - 50%
 (gT = 35,910 / S = 3.164 / L = 3.77)

All Regions in CROP Landscape:
 All Species (avg. annual total based on '01-'05 performance)
 biomass (<7") = 14.223 mmbf or 71,113 gT
 small logs (>7"-12") = 6.159 mmbf
 large logs (>12") = 7.746 mmbf



**Mississippi-16th Section Lands: All Regions in CROP Landscape
 averaged annual offering/removal (based on '01-'05 performance)*
 (gT = 71,113 / S = 6.159 mmbf / L = 7.746 mmbf)**

*only those counties with 16th Section
 timber removal each year between '01 – '05
 (18 out of 43).

A

Central Region: (7 of 14 counties in CROP landscape)

Central Region Counties (gT = 31,621; S = 2.18 mmbf; L = 2.651 mmbf)**

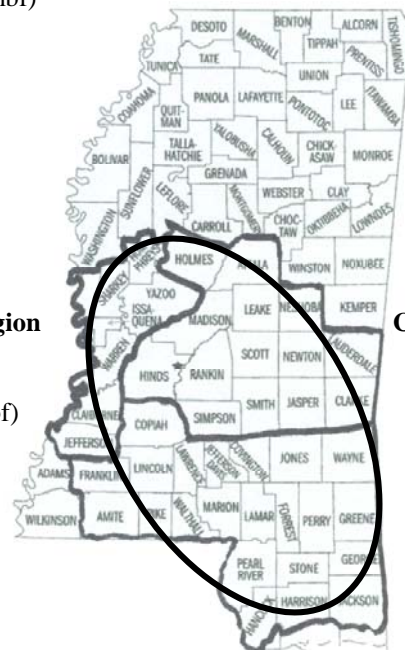
- Clarke
- Hinds
- Jasper
- Newton
- Scott
- Simpson
- Smith

B

South Region: (9 of 22 counties in CROP landscape)

South Region Counties (gT = 35,910; S = 3.165 mmbf; L = 3.77 mmbf)

- Amite
- Copiah
- Franklin
- Jefferson Davis
- Jones
- Lincoln
- Marion
- Walthall
- Wayne



C

Delta/River Region: (2 of 7 counties in CROP landscape)

Delta/River Region Counties (gT = 3,581; S = .809 mmbf; L = 1.325 mmbf)

- Jefferson
- Warren

** 5 -yr volume offering

**Mississippi-16th Section Lands: Pine All Regions in CROP Landscape
 average annual offering/removal (based on '01-'05 performance)*
 (gT = 56,435 / S = 5.046 mmbf / L = 5.881 mmbf)**

*only those counties with 16th Section
 timber removal each year between '01 - '05
 (18 out of 43).

gT = green tons (up to 7" dbh)
 S = small log mmbf (>7"-12" dbh)
 L = large log mmbf (>12" dbh)

**Delta/River Region: 2 of 7 counties - 1%
 (gT = 243 / S = .0622 / L = .0725)**

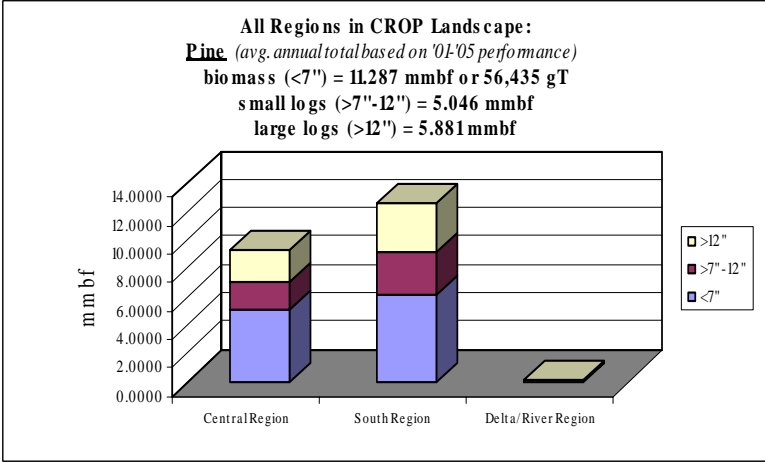
**Central Region: 7 of 14 counties - 42%
 (gT = 25,361 / S = 1.98 / L = 2.308)**



Delta/River Region

Central Region

South Region



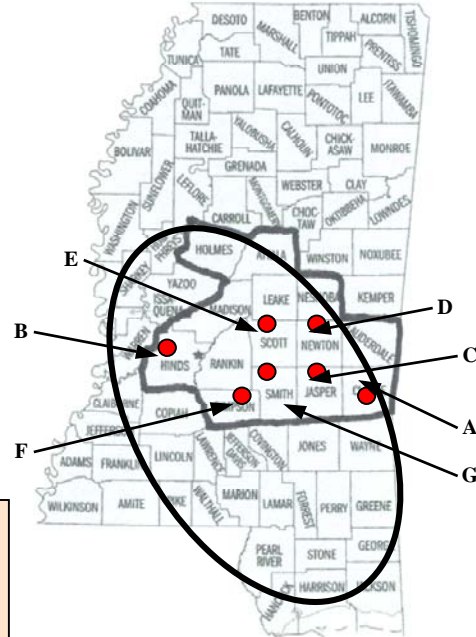
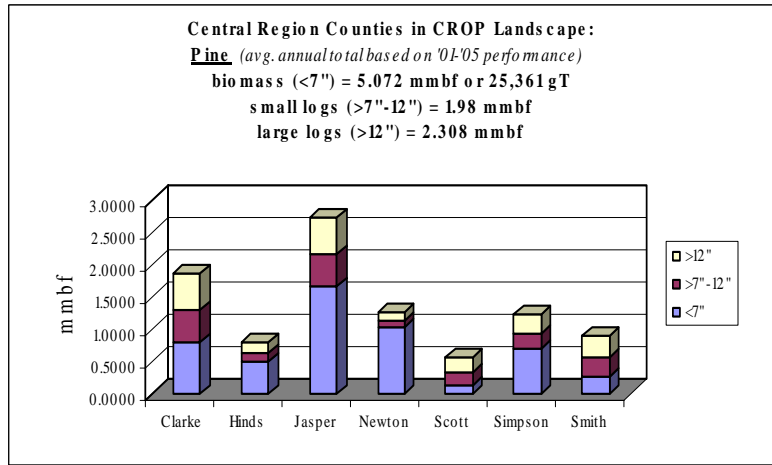
**South Region: 9 of 22 counties - 57%
 (gT = 30,831 / S = 3.004 / L = 3.501)**

Mississippi Central Region: Pine CROP offering/removal
 (averaged annual total removal based on '01-'05 performance)*
 (gT = 25,361 / S = 1.98 mmbf / L = 2.308 mmbf)

*only those counties with 16th Section
 timber removal each year between '01 - '05
 (18 out of 43).

gT = green tons (up to 7" dbh)
 S = small log mmbf (>7"-12" dbh)
 L = large log mmbf (>12" dbh)

● Central Region in CROP Landscape
 (7 of 14 counties with annual removals)



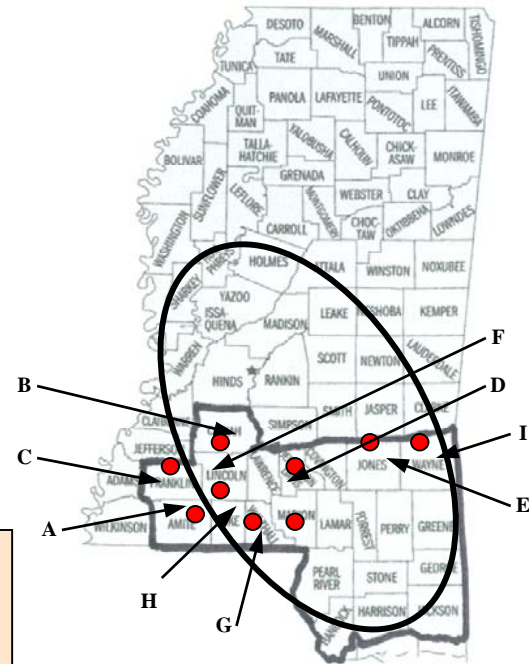
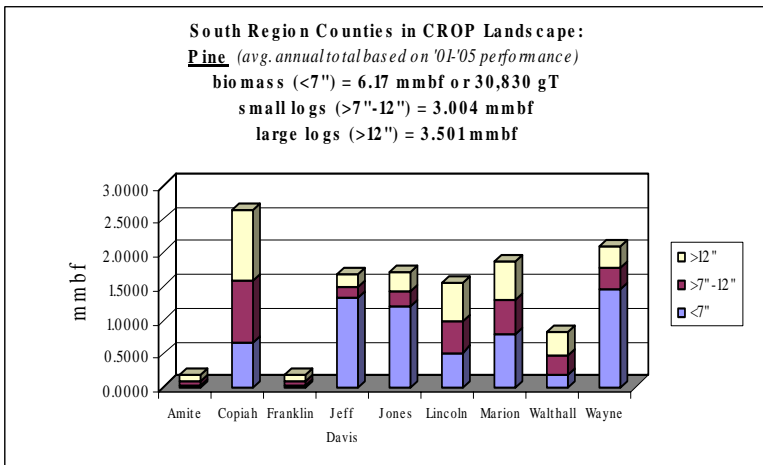
A = Clarke
 B = Hinds
 C = Jasper
 D = Newton
 E = Scott
 F = Simpson
 G = Smith

Mississippi South Region: Pine CROP offering/removal
*(averaged annual total removal based on '01-'05 performance)**
(gT = 30,831 / S = 3.004 mmbf / L = 3.501 mmbf)

gT = green tons (up to 7" dbh)
 S = small log mmbf (>7"-12" dbh)
 L = large log mmbf (>12" dbh)

*only those counties with 16th Section
 timber removal each year between '01 – '05
 (18 out of 43).

South Region in CROP Landscape
 ● (9 of 22 counties with annual removals)



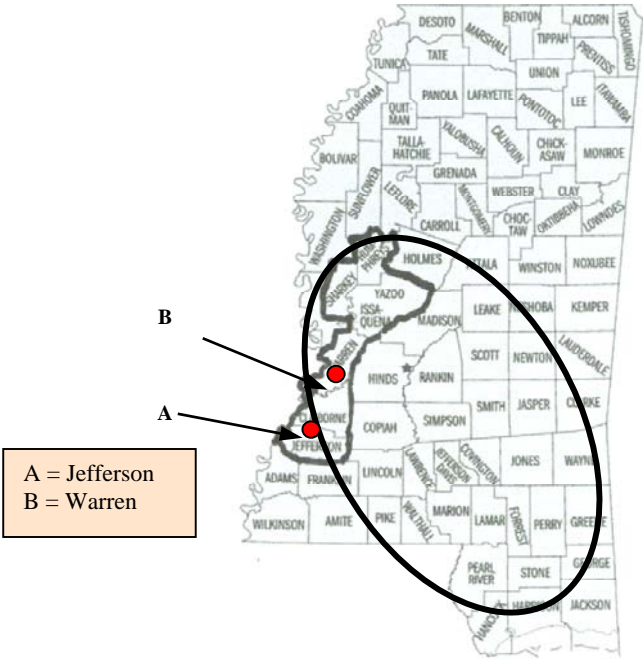
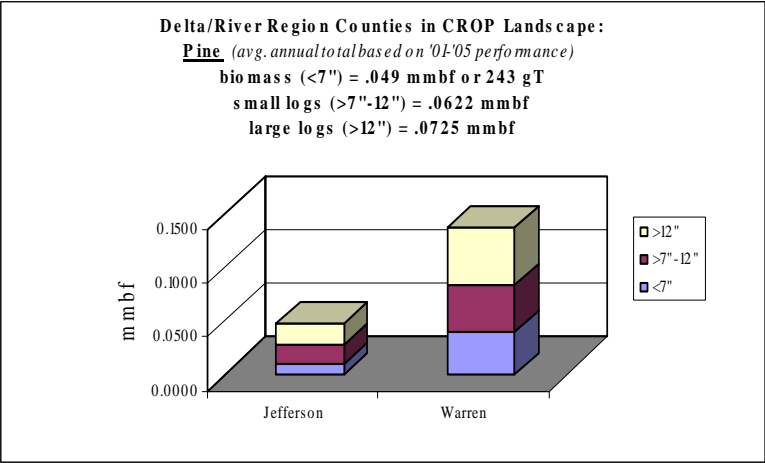
- A = Amite
- B = Copiah
- C = Franklin
- D = Jefferson Davis
- E = Jones
- F = Lincoln
- G = Marion
- H = Walthall
- I = Wayne

Mississippi Delta/River Region: Pine CROP offering/removal
*(averaged annual total removal based on '01-'05 performance)**
(gT = 243 / S = .0622 mmbf / L = .0725 mmbf)

gT = green tons (up to 7" dbh)
 S = small log mmbf (>7"-12" dbh)
 L = large log mmbf (>12" dbh)

*only those counties with 16th Section
 timber removal each year between '01 – '05
 (18 out of 43).

Delta/River Region in CROP Landscape
 ● (2 of 7 counties with annual removals)



Mississippi-16th Section Lands: Hardwood All Regions in CROP Landscape
averaged annual offering/removal (based on '01-'05 performance)*
(gT = 14,678 / S = 1.112 mmbf / L = 1.865 mmbf)

*only those counties with 16th Section timber removal each year between '01 - '05 (18 out of 43).

gT = green tons (up to 7" dbh)
 S = small log mmbf (>7"-12" dbh)
 L = large log mmbf (>12" dbh)

Delta/River Region: 2 of 7 counties - 45%
(gT = 3,338 / S = .747 / L = 1.253)

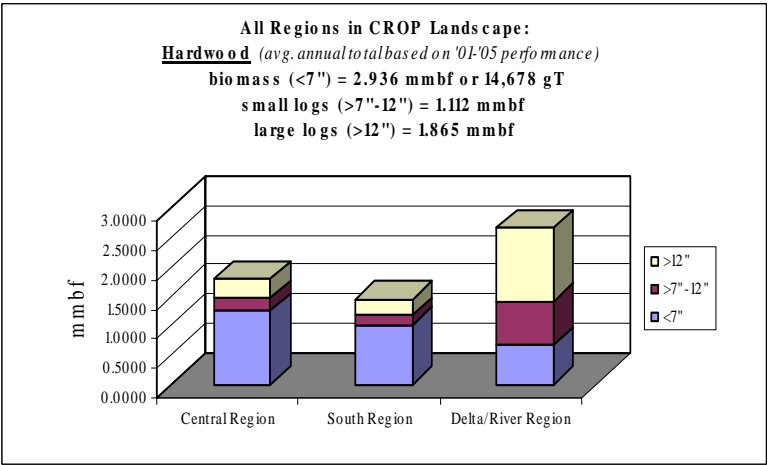
Central Region: 7 of 14 counties - 30%
(gT = 6,260 / S = .2043 / L = .3426)



Delta/River Region

Central Region

South Region



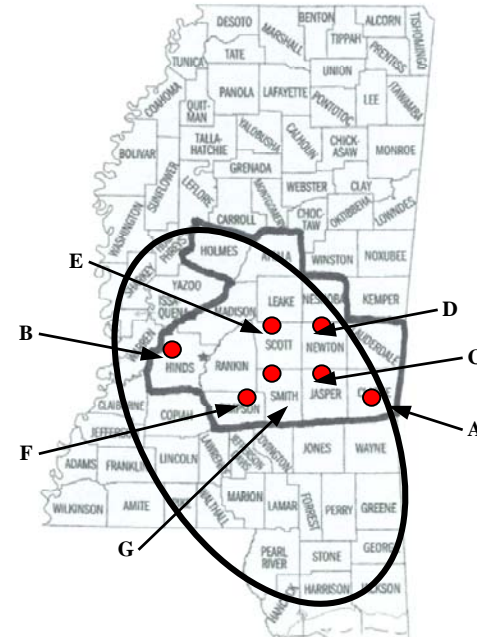
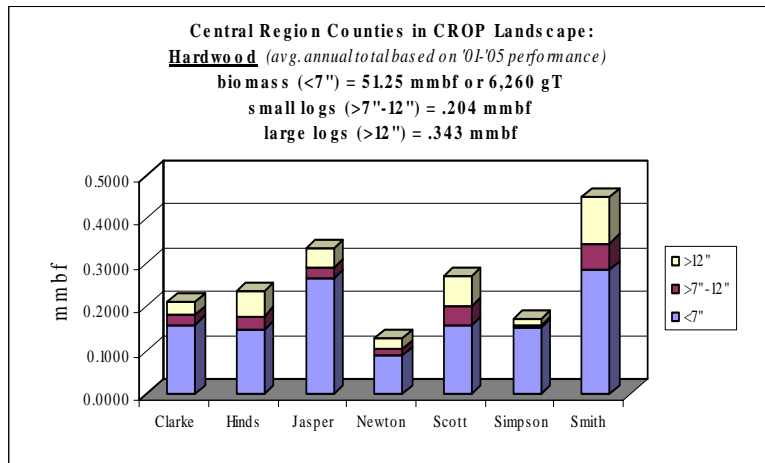
South Region: 9 of 22 counties - 24%
(gT = 5,079 / S = .161 / L = .2699)

Mississippi Central Region: Hardwood CROP offering/removal
 (averaged annual total removal based on '01-'05 performance)*
 (gT = 6,260 / S = .2043 mmbf / L = .3426 mmbf)

gT = green tons (up to 7" dbh)
 S = small log mmbf (>7"-12" dbh)
 L = large log mmbf (>12" dbh)

*only those counties with 16th Section
 timber removal each year between '01 – '05
 (18 out of 43).

Central Region in CROP Landscape
 ● (7 of 14 counties with annual removals)



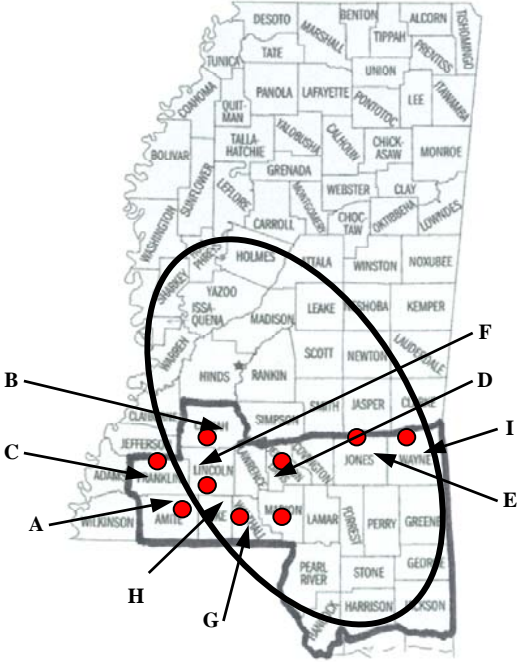
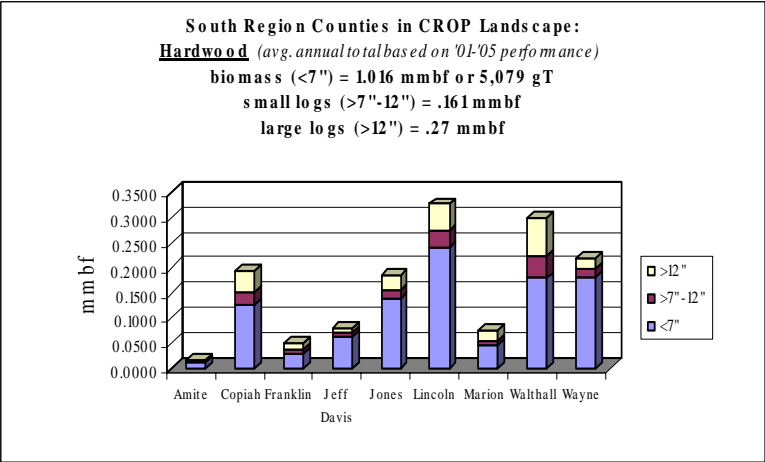
A = Clarke
 B = Hinds
 C = Jasper
 D = Newton
 E = Scott
 F = Simpson
 G = Smith

Mississippi South Region: Hardwood CROP offering/removal
*(averaged annual total removal based on '01-'05 performance)**
(gT = 5,079 / S = .161 mmbf / L = .2699 mmbf)

gT = green tons (up to 7" dbh)
 S = small log mmbf (>7"-12" dbh)
 L = large log mmbf (>12" dbh)

*only those counties with 16th Section
 timber removal each year between '01 – '05
 (18 out of 43).

South Region in CROP Landscape
 ● (9 of 22 counties with annual removals)



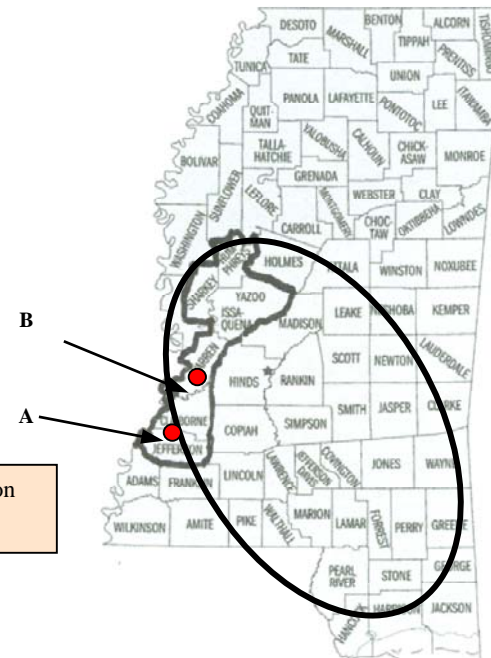
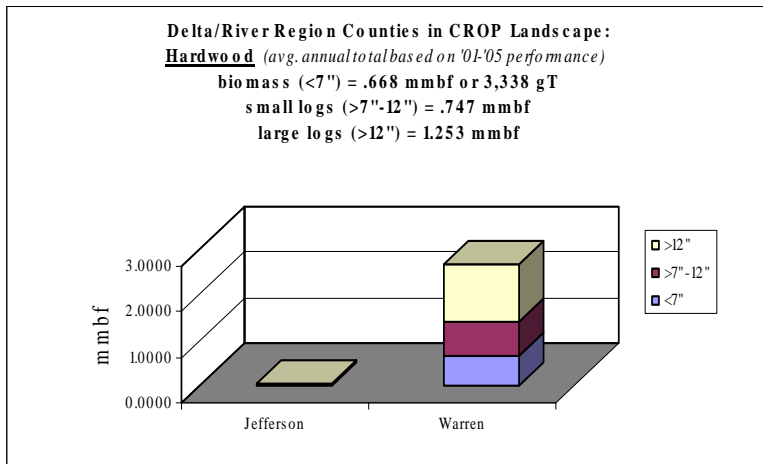
- A = Amite
- B = Copiah
- C = Franklin
- D = Jefferson Davis
- E = Jones
- F = Lincoln
- G = Marion
- H = Walthall
- I = Wayne

Mississippi Delta/River Region: Hardwood CROP offering/removal
*(averaged annual total removal based on '01-'05 performance)**
(gT = 3,338 / S = .747 mmbf / L = 1.253 mmbf)

*only those counties with 16th Section
 timber removal each year between '01 – '05
 (18 out of 43).

gT = green tons (up to 7" dbh)
 S = small log mmbf (>7"-12" dbh)
 L = large log mmbf (>12" dbh)

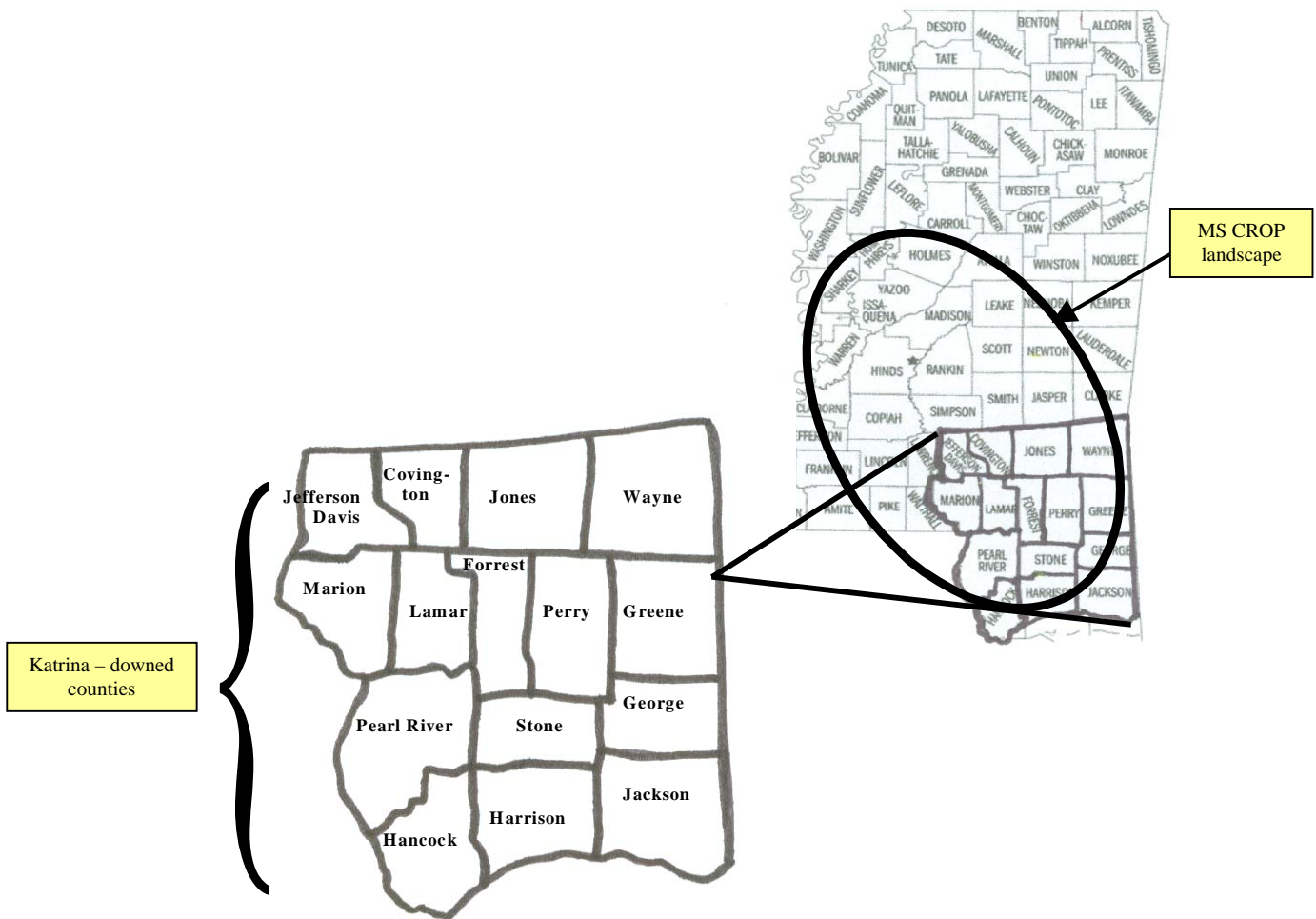
Delta/River Region in CROP Landscape
 ● (2 of 7 counties with annual removals)



A = Jefferson
 B = Warren

Katrina-Downed Resource: (one-time volume offering):

- 15 southern counties evaluated.
- Initial downed data collected by Mississippi Institute of Forest Inventory (MIFI).
- Diameter breakout, decay rates, usable blue stain (pine) volume, heartwood (pine) volume, & hardwood volume determined (with MIFI & MSU guidance).
- Volume breakouts provided on county-by-county basis.
- All volume <9” for pine and <7” for hardwood calculated as biomass.



Katrina – Downed Resource:

Assumptions:

- 1) pine: 49% of original volume already removed. Estimated remaining volume 994.3 mmbf:
 - biomass = 46%
 - small log = 24%
 - large log = 34%

- 2) hardwood: 39% already removed. Estimated remaining volume is 833.38 mmbf:
 - biomass = 31%
 - small log = 35%
 - large log = 34%

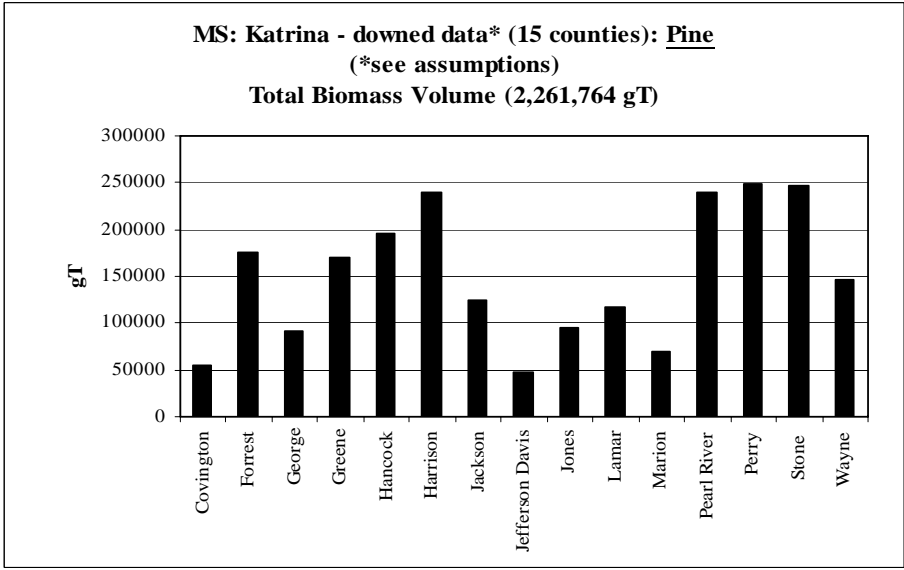
Summary:

	biomass (gT)	Small log – 7”-12” (mmbf)			Large log - >12” (mmbf)		
		blue stain	heartwood	hardwood	blue stain	heartwood	hardwood
<i>pine</i>	2,261,764	45.25	193.88	—	82.93	219.89	—
<i>hardwood</i>	1,275,840	—	—	293.83	—	—	284.38

<i>usable blue stain (pine)</i>	128 mmbf
<i>usable heartwood (pine)</i>	413.7 mmbf
<i>usable hardwood</i>	578.21 mmbf
<i>biomass</i>	3,537,604 gT

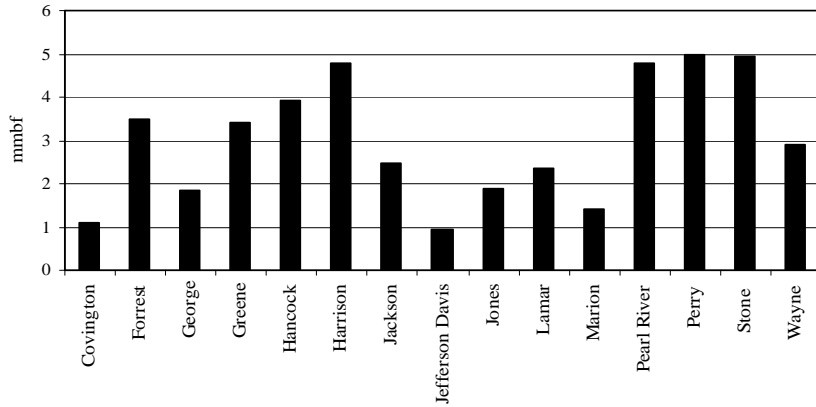
Pine: Katrina-Downed *Biomass* (gT)*
 (*see assumptions)
Total biomass volume = 2,261,764

gT = green tons

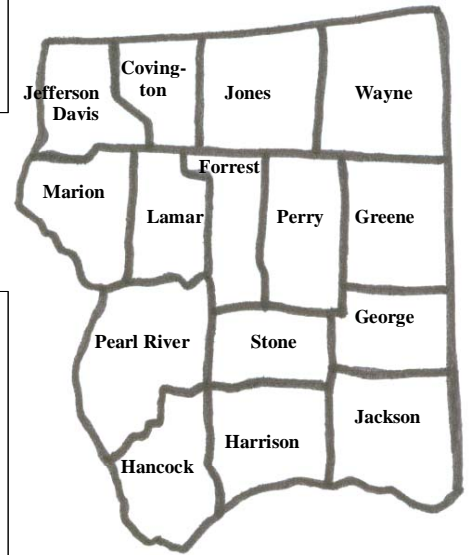
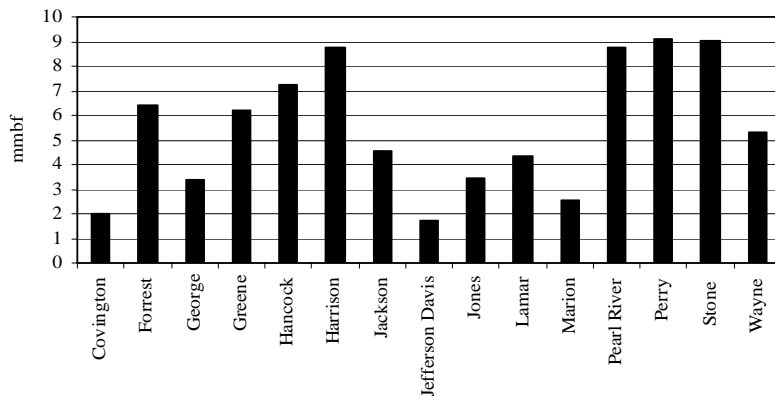


Pine: Katrina-Downed *Blue Stain**
 (*see assumptions)
Total blue stain volume = 128.172 mmbf

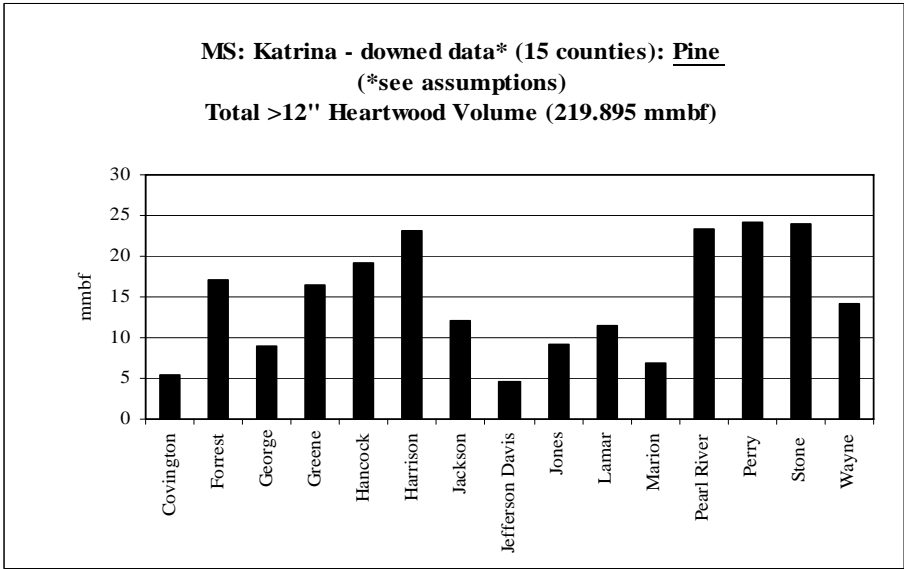
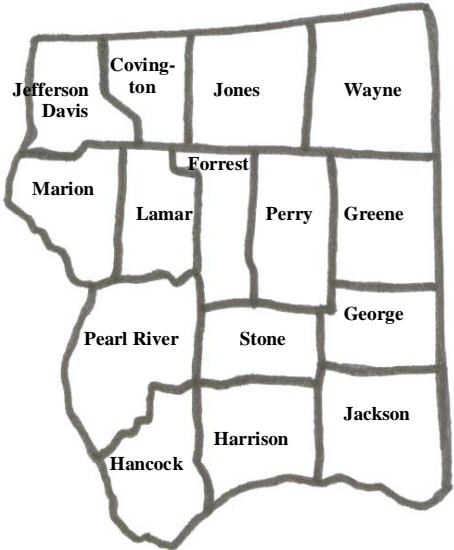
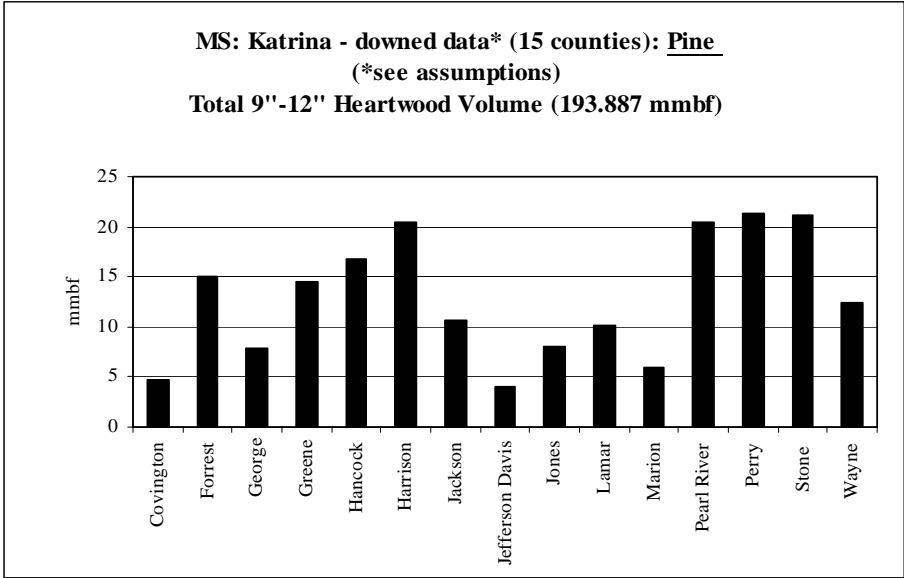
MS: Katrina - downed data* (15 counties): Pine
 (*see assumptions)
Total 9"-12" Blue Stain Volume (45.2403 mmbf)



MS: Katrina - downed data* (15 counties): Pine
 (*see assumptions)
Total >12" Blue Stain Volume (82.932 mmbf)

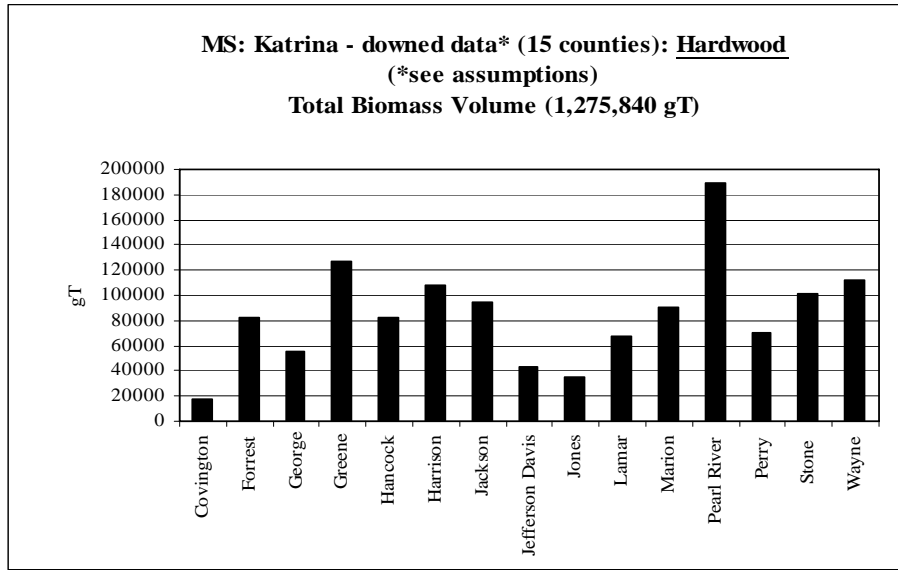


Pine: Katrina-Downed *Heartwood**
 (*see assumptions)
Total heartwood volume = 413.782 mmbf

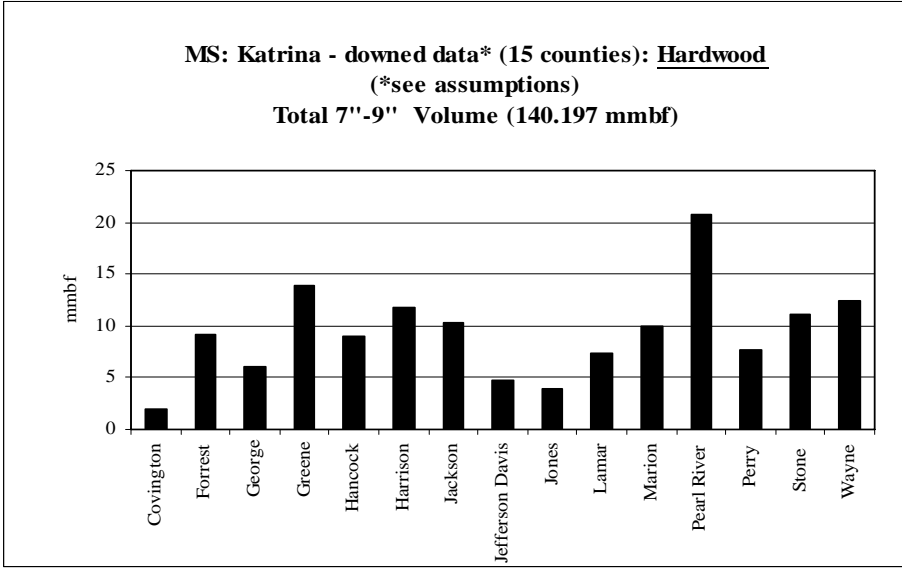


Hardwood: Katrina-Downed Biomass (gT)*
 (*see assumptions)
Total biomass volume = 1,275,840

gT = green tons



Hardwood: Katrina-Downed 7"-9"*
 (*see assumptions)
Total volume = 140.197 mmbf



Hardwood: Katrina-Downed 9"-12"*

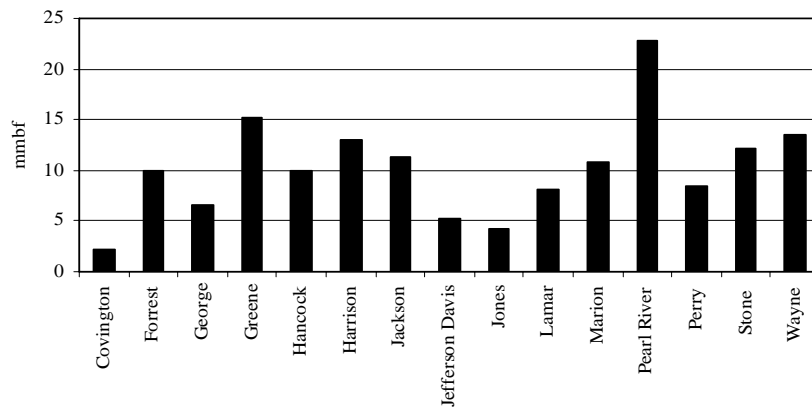
(*see assumptions)

Total volume = 153.641 mmbf

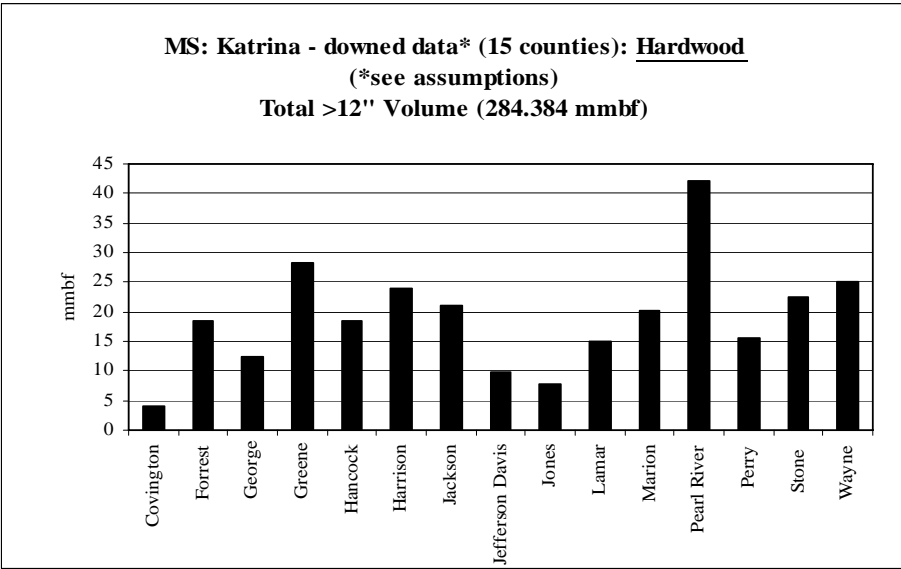
MS: Katrina - downed data* (15 counties): Hardwood

(*see assumptions)

Total 9"-12" Volume (153.641 mmbf)



Hardwood: Katrina-Downed >12''*
 (*see assumptions)
Total volume = 284.384 mmbf



Questions? Contact:

Edmund Gee:

Nat'l Woody Biomass Utilization Team Leader
Nat'l Partnership Coordinator USFS
Washington DC
tel: (202) 205-1787 fax: (202) 205-1045 cell: (202) 236-5153
E-mail: eagee@fs.fed.us

Catherine M. Mater:

President—Mater Limited
Senior Fellow – The Pinchot Institute for Conservation
Corvallis, Oregon; Washington, DC
tel: (541) 753-7335 fax: (541) 752-2952; cell: (541) 760-5526
E-mail: catherine@mater.com