

**Mississippi CROP\***  
**ROMs**  
(Resource Offering/Removal Maps)

April 2007

\*This CROP report covers 3 resource sections:

**Section A:** Resource offering/removal off of State & Federal lands.

**Section B:** Resource offering/removal estimates off of 16<sup>th</sup> Section lands.

**Section C:** Katrina-downed pine & hardwood resource offering.

**Prepared by:**

**Catherine M. Mater**  
**Mater Engineering, Ltd.**  
**136 SW Washington Ave., Ste. 201**  
**Corvallis, Oregon 97333**  
*Tel: 541-753-7335 Fx: 541-752-2952*  
[mater@mater.com](mailto:mater@mater.com)  
[www.mater.com](http://www.mater.com)

**Section A: Mississippi CROP  
ROMs (state & federal lands)  
(Centerpoint: Mt. Olive)**

**April 2007**

*Table of Contents*

	<i>Page</i>
<b>Mississippi All Agencies</b> .....	6
All Agencies Location Map .....	7
NEPA Overviews .....	8
NEPA All Agencies .....	8-10
ROMs by Species.....	11
a) <b><u>Southern Yellow Pine Overview</u></b> .....	12
b) Southern Yellow Pine Location Map .....	13
c) Diameter by Year .....	14
d) Source Specific:	
<i>Homochitto NF</i> : .....	15
<i>De Soto NF</i> : .....	16-17
<i>Bienville NF</i> : .....	18
<i>MS DWF &amp; P</i> : .....	19
a) <b><u>Waxy Species Overview</u></b> .....	20
b) Waxy Species Location Map .....	21
c) Diameter by Year .....	22
d) Source Specific:	
<i>De Soto NF</i> : .....	23
a) <b><u>Gum Species Overview</u></b> .....	24
b) Gum Species Location Map .....	25
c) Diameter by Year .....	26
d) Source Specific:	
<i>Delta NF</i> : .....	27
<i>Homochitto NF</i> : .....	27
<i>Bienville NF</i> : .....	28
<i>MS DWF &amp; P</i> : .....	29

## Table of Contents

	<i>Page</i>
a) <b><u>Red Oak Overview</u></b> .....	30
b) Red Oak Location Map .....	31
c) Diameter by Year .....	32
d) Source Specific:	
<i>Delta NF:</i> .....	33
<i>Bienville NF:</i> .....	33
a) <b><u>Oak Species Overview</u></b> .....	34
b) Oak Species Location Map .....	35
c) Diameter by Year .....	36
d) Source Specific:	
<i>Homochitto NF:</i> .....	37
<i>Bienville NF:</i> .....	38
a) <b><u>Hardwoods Overview</u></b> .....	39
b) Hardwoods Location Map .....	40
c) Diameter by Year .....	41
d) Source Specific:	
<i>Delta NF:</i> .....	42
<i>Bienville NF:</i> .....	42
a) <b><u>Green Ash Overview</u></b> .....	43
b) Green Ash Location Map .....	44
c) Diameter by Year .....	45
d) Source Specific:	
<i>Delta NF:</i> .....	46
a) <b><u>Poplar Overview</u></b> .....	47
b) Poplar Location Map .....	48
c) Diameter by Year .....	49
d) Source Specific:	
<i>Homochitto NF:</i> .....	50
<i>Bienville NF:</i> .....	51

**Table of Contents**

	<i>Page</i>
a) <b><u>Hickory Overview</u></b> .....	52
b) Hickory Location Map .....	53
c) Diameter by Year .....	54
d) Source Specific:	
<i>Homochitto NF</i> : .....	55
<i>Bienville NF</i> : .....	56

**Section B: Mississippi CROP  
16<sup>th</sup> Section Lands ROMs**

	<i>Page</i>
<b>Title page</b> .....	57
<b>Assumptions</b> .....	58
<b>Table of Contents</b> .....	59
 <b>Mississippi All Regions Data</b> .....	 60
All Regions Location Map .....	61
ROMs by Species .....	62
a) <b><u>Pine Overview</u></b> .....	63-64
1. <i>Central Region Map</i> : .....	65
• County breakout data .....	66
2. <i>South Region Map</i> : .....	67
• County breakout data .....	68
3. <i>Delta/River Region Map</i> : .....	69
• County breakout data .....	70
b) <b><u>Hardwood Overview</u></b> .....	71-72
1. <i>Central Region Map</i> : .....	73
• County breakout data .....	74
2. <i>South Region Map</i> : .....	75
• County breakout data .....	76
3. <i>Delta/River Region Map</i> : .....	77
• County breakout data .....	78

**Section C: Mississippi CROP  
Katrina-Downed Pine & Hardwood**

	<i>Page</i>
<b>Title page</b> .....	79
<b>Assumptions</b> .....	80
<b>Table of Contents</b> .....	81

**Katrina-Downed Pine ROMs**

a) Pine biomass by County .....	82
b) Pine blue-stain 9"-12" by County.....	83
c) Pine blue-stain >12" by County .....	83
d) Pine heartwood 9"-12" by County .....	84
e) Pine heartwood >12" by County .....	84

**Katrina-Downed Hardwood ROMs**

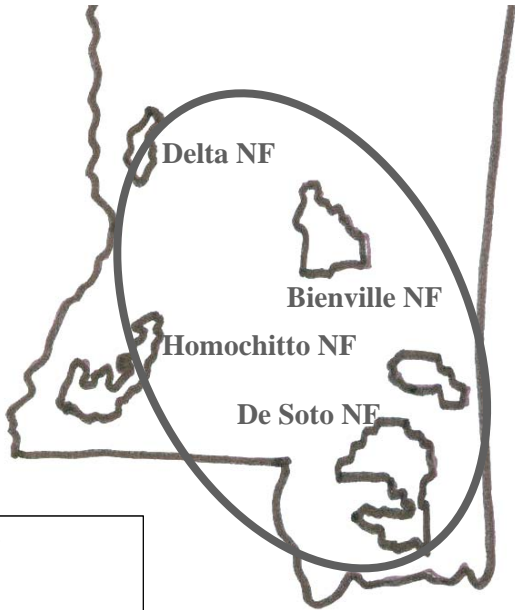
a) Hardwood biomass by County .....	85
b) Hardwood 7"-8" by County .....	86
c) Hardwood >9"-12" by County .....	87
d) Hardwood >12" by County .....	88

**Mississippi: All Agencies CROP offering/removal '07 – '11**  
**(gT = 227,625 / S = 109.547 mmbf / L = 111.491 mmbf)**

gT = green tons (up to 7" dbh)  
 S = small log mmbf (>7"-12" dbh)  
 L = large log mmbf (>12" dbh)

**Delta NF: 1 RD – 6%**  
**(gT = 0 / S = 3 / L = 12)**

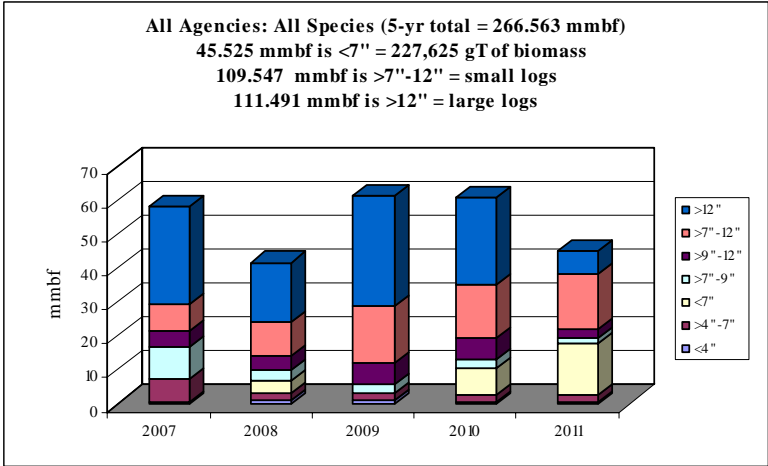
**Homochitto NF: 1 RD – 22%**  
**(gT = 28,975 / S = 17.985 / L = 35.278)**



**Bienville NF: 1 RD – 24%**  
**(gT = 62,400 / S = 25.32 / L = 25)**

**De Soto NF: 2 RDs – 48%**  
**(gT = 136,250 / S = 63.123 / L = 38.063)**

**MS DWF & P – <1%**  
**(gT = 0 / S = .119 / L = 1.15)**



	gT	mmbf	
	Biomass	Small Log	Large Log
2007	37605	21.855	28.586
2008	34800	16.92	17.66
2009	15190	25.6775	32.609
2010	51890	24.815	25.486
2011	88140	20.28	7.15
<b>Totals</b>	<b>227625</b>	<b>109.5475</b>	<b>111.491</b>
%	17%	41%	42%
mmbf	45.525		

**266.5635**

**Mississippi: All Agencies CROP offering/removal '07 – '11**  
**(gT = 227,625 / S = 109.547 mmbf / L = 111.491 mmbf)**

**Delta NF:**

A Delta RD ( $gT = 0 / S = 3 \text{ mmbf} / L = 12 \text{ mmbf}$ )

**Homochitto NF:**

B Homochitto RD ( $gT = 28.975 / S = 17.98 \text{ mmbf} / L = 35.28 \text{ mmbf}$ )

**De Soto NF:**

C De Soto RD ( $gT = 100,000 / S = 26.87 \text{ mmbf} / L = 9.06 \text{ mmbf}$ )

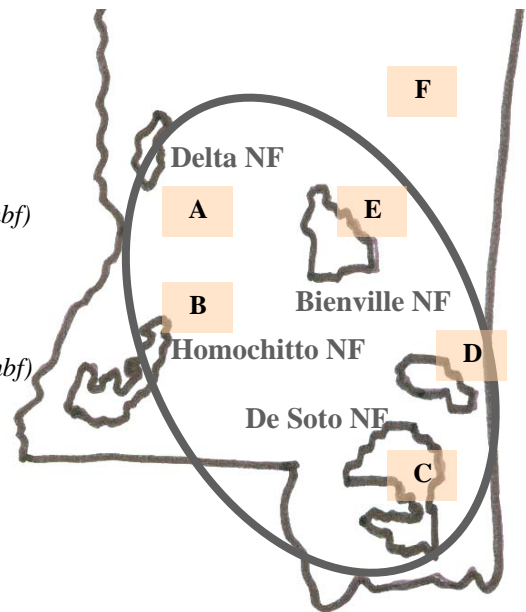
D Chickasawhay RD ( $gT = 36,250 / S = 36.25 \text{ mmbf} / L = 29 \text{ mmbf}$ )

**Bienville NF:**

E Bienville RD ( $gT = 62,400 / S = 25.32 \text{ mmbf} / L = 25 \text{ mmbf}$ )

**MS DWF & P:**

F MS DWF & P ( $gT = 0 / S = .119 \text{ mmbf} / L = 1.15 \text{ mmbf}$ )

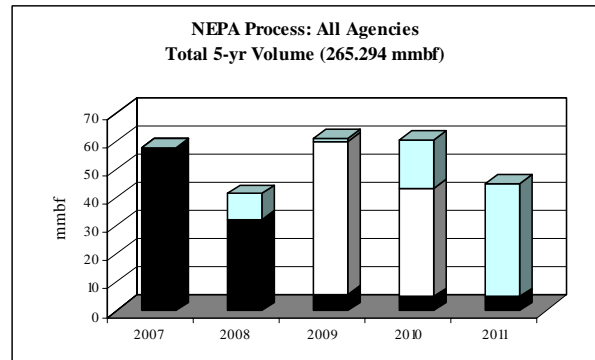
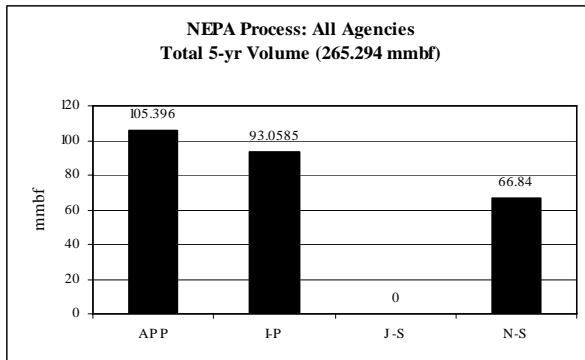


# NEPA Overviews

## (National Environmental Policy Act)

NEPA Process – All Agencies:  
 Total 5-yr volume (265.294 mmbf; includes gT as mmbf)

	<i>mmbf</i>	<i>% of total</i>
<i>Approved</i>	<b>105.396</b>	<b>40%</b>
<i>In process</i>	<b>93.058</b>	<b>35%</b>
<i>Just started</i>	<b>0</b>	<b>0%</b>
<i>Not started</i>	<b>66.84</b>	<b>25%</b>

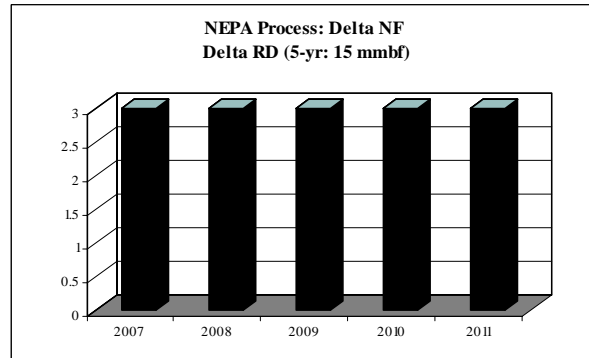






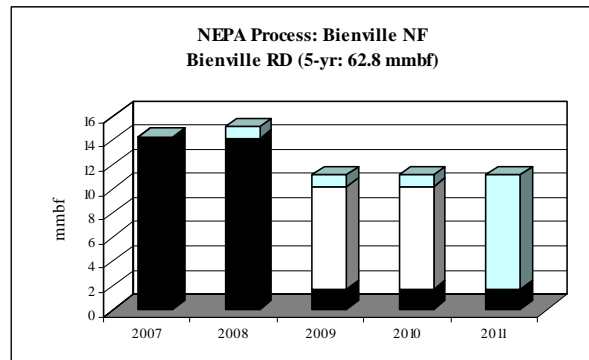
Delta NF – Delta RD: Total 5-yr volume (15 mmbf; includes gT as mmbf)

	<i>mmbf</i>	<i>% of total</i>
<i>Approved</i>	15	100%
<i>In process</i>	0	0%
<i>Just started</i>	0	0%
<i>Not started</i>	0	0%



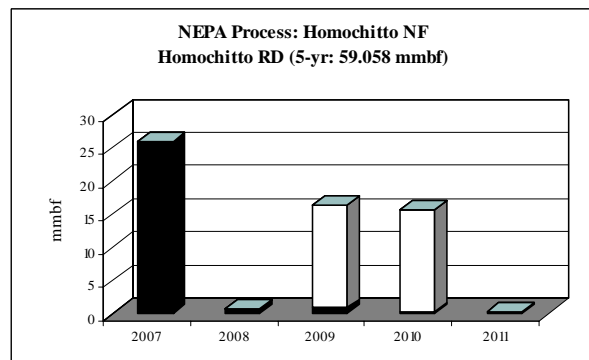
Bienville NF – Bienville RD: Total 5-yr volume (62.8 mmbf; includes gT as mmbf)

	<i>mmbf</i>	<i>% of total</i>
<i>Approved</i>	33.46	53%
<i>In process</i>	17	27%
<i>Just started</i>	0	0%
<i>Not started</i>	12.34	20%



Homochitto NF – Homochitto RD: Total 5-yr volume (59.058 mmbf; includes gT as mmbf)

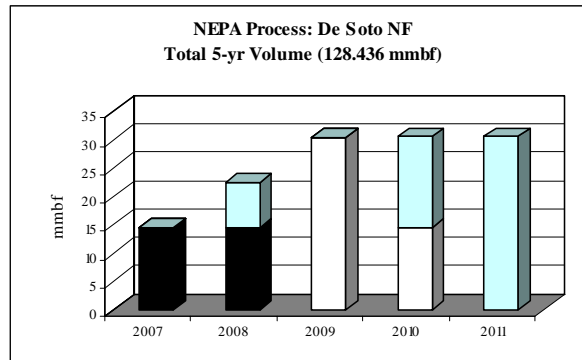
	<i>mmbf</i>	<i>% of total</i>
<i>Approved</i>	27.936	47%
<i>In process</i>	31.122	53%
<i>Just started</i>	0	0%
<i>Not started</i>	0	0%





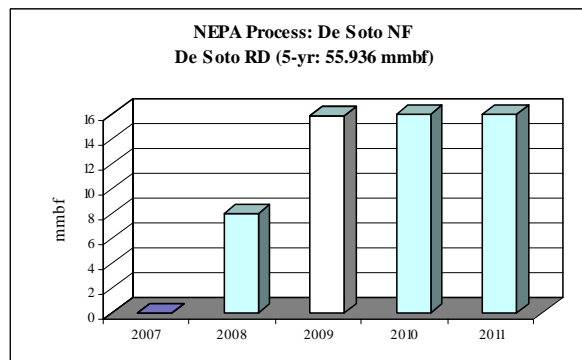
De Soto NF: Total 5-yr volume (128.436 mmbf; includes gT as mmbf)

	<i>mmbf</i>	<i>% of total</i>
<i>Approved</i>	29	23%
<i>In process</i>	44.936	35%
<i>Just started</i>	0	0%
<i>Not started</i>	54.5	42%



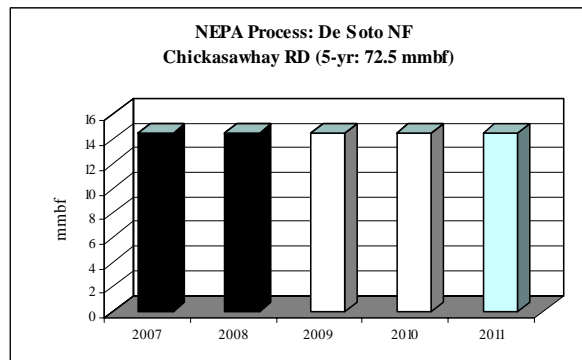
De Soto NF: De Soto RD Total 5-yr volume (55.936 mmbf; includes gT as mmbf)

	<i>mmbf</i>	<i>% of total</i>
<i>Approved</i>	0	0%
<i>In process</i>	15.936	28%
<i>Just started</i>	0	0%
<i>Not started</i>	40	72%



De Soto NF: Chickasawhay RD Total 5-yr volume (72.5 mmbf; includes gT as mmbf)

	<i>mmbf</i>	<i>% of total</i>
<i>Approved</i>	29	40%
<i>In process</i>	29	40%
<i>Just started</i>	0	0%
<i>Not started</i>	14.5	20%



# **ROMs by Species**

(Resource Offering/Removal Maps)

**Mississippi: Southern Yellow Pine CROP offering/removal '07 – '11**  
**(gT = 157,245 / S = 87.489 mmbf / L = 93.734 mmbf)**

**ROM # SYP 1**

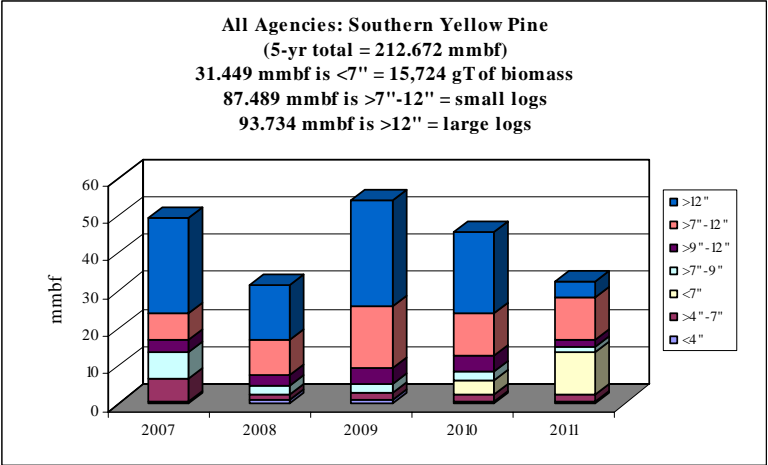
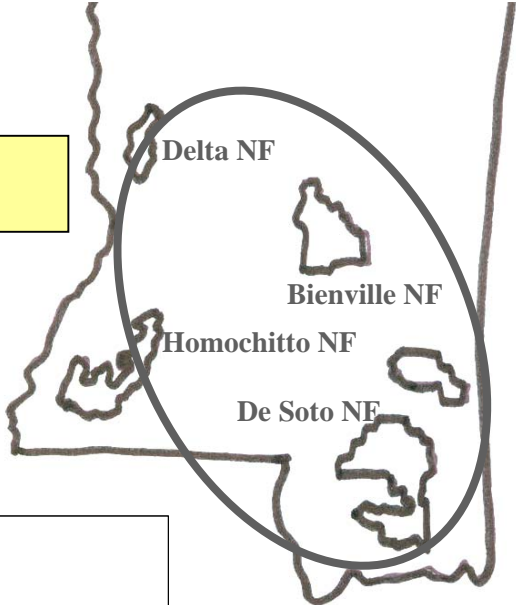
gT = green tons (up to 7" dbh)  
 S = small log mmbf (>7"-12" dbh)  
 L = large log mmbf (>12" dbh)

**Homochitto NF: 1 RD – 23%**  
**(gT = 24,995 / S = 12.746 / L = 31.691)**

**Bienville NF: 1 RD – 25%**  
**(gT = 56,000 / S = 19.55 / L = 22.85)**

**MS DWF & P – <1%**  
**(gT = 0 / S = 0.07 / L = 1.13)**

**De Soto NF: 2 RDs – 51%**  
**(gT = 76,250 / S = 55.123 / L = 38.063)**



	gT	mmbf	
	Biomass	Small Log	Large Log
2007	32725	17.51	25.153
2008	12300	14.51	14.59
2009	14190	22.7815	28.392
2010	30890	17.918	21.269
2011	67140	14.77	4.33
<b>Totals</b>	<b>157245</b>	<b>87.4895</b>	<b>93.734</b>
<b>%</b>	<b>15%</b>	<b>41%</b>	<b>44%</b>
<b>mmbf</b>	<b>31.449</b>		

**212.6725**

**Mississippi: *Southern Yellow Pine* CROP offering/removal '07 – '11**  
(gT = 157,245 / S = 87.489 mmbf / L = 93.734 mmbf)

ROM # SYP 1.1

SYP = southern yellow pine

**Delta NF:**

A Delta RD

**Homochitto NF:**

B ***Homochitto RD*** \* (gT = 24,995 / S = 12.746 mmbf / L = 31.691 mmbf)

**De Soto NF:**

C ***De Soto RD*** (gT = 40,000 / S = 18.87 mmbf / L = 9.06 mmbf)

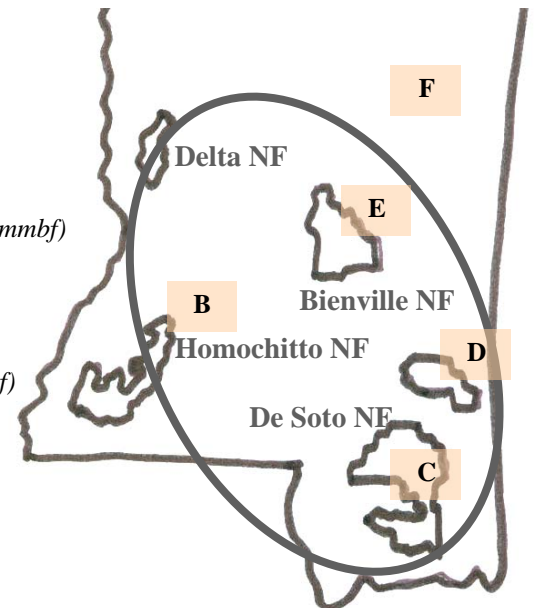
D ***Chickasawhay RD*** (gT = 36,250 / S = 36.25 mmbf / L = 29 mmbf)

**Bienville NF:**

E ***Bienville RD*** (gT = 56,000 / S = 19.55 mmbf / L = 22.85 mmbf)

**MS DWF & P:**

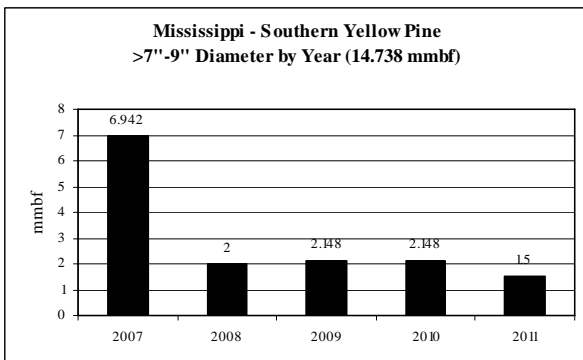
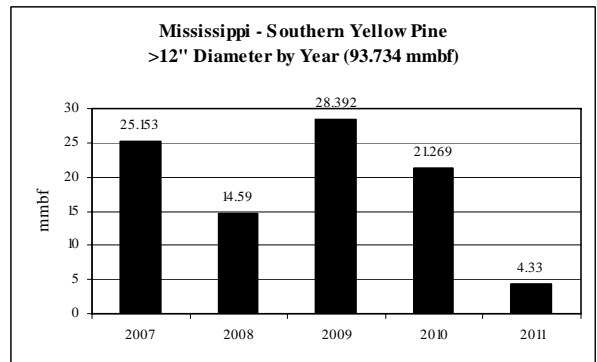
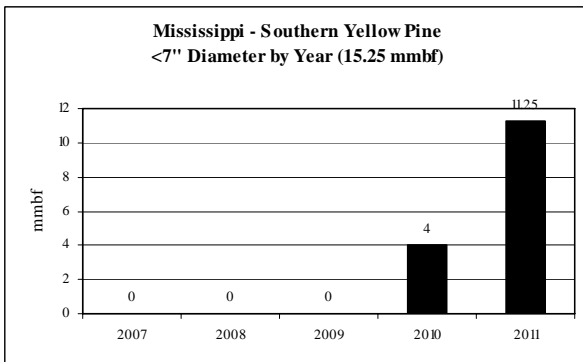
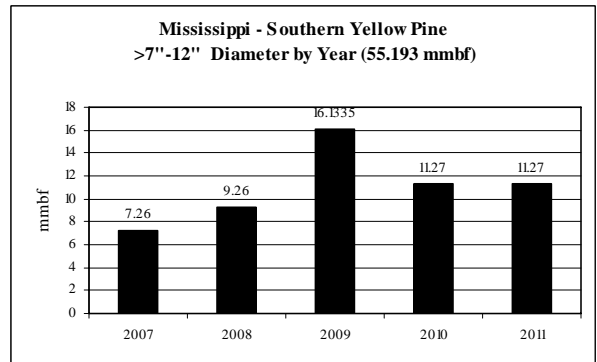
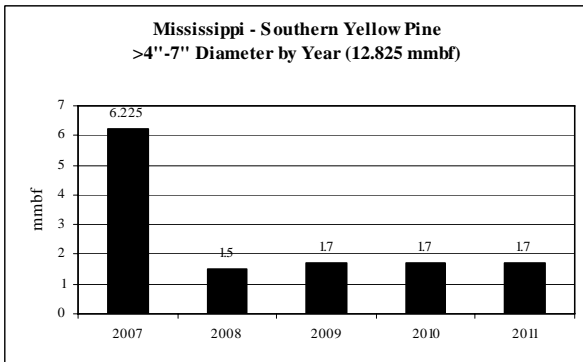
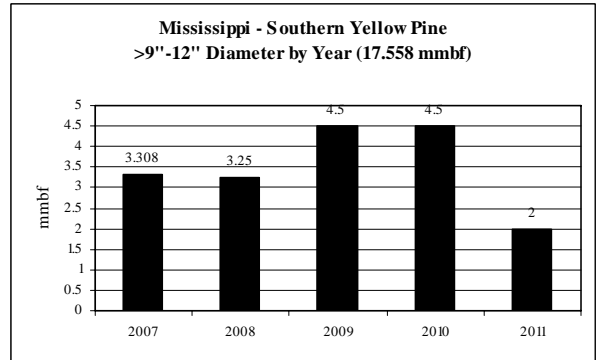
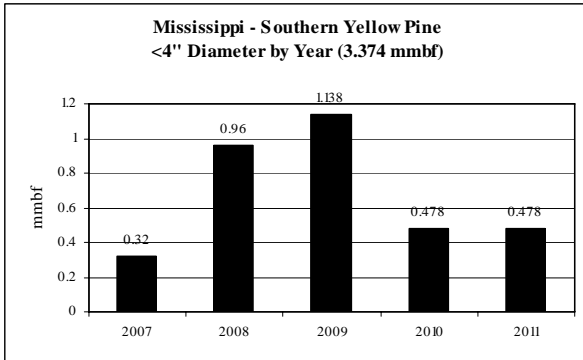
F ***MS DWF & P*** (gT = 0 / S = .07 mmbf / L = 1.13 mmbf)



\*italics/bold = species offering in CROP

***Southern Yellow Pine: Diameter by Year***

**ROM # SYP 1.2**



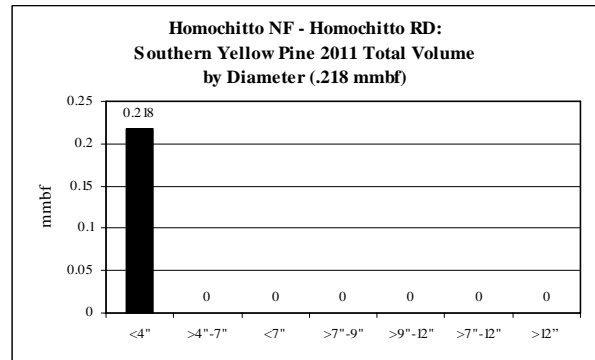
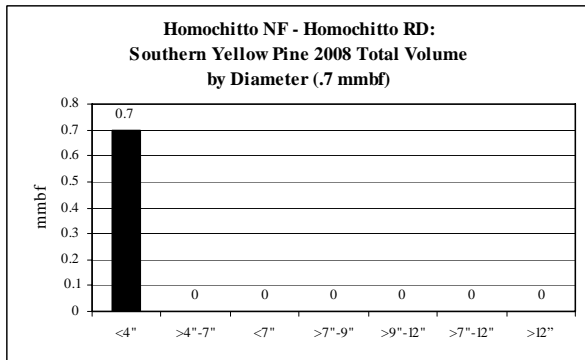
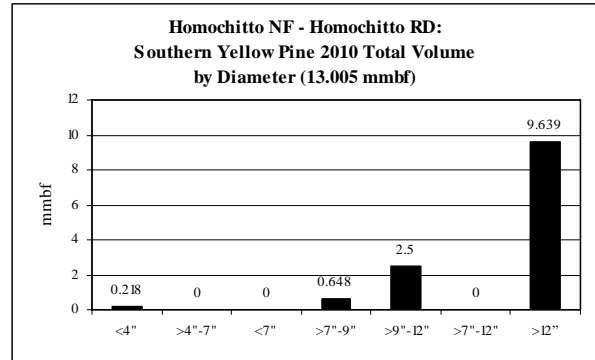
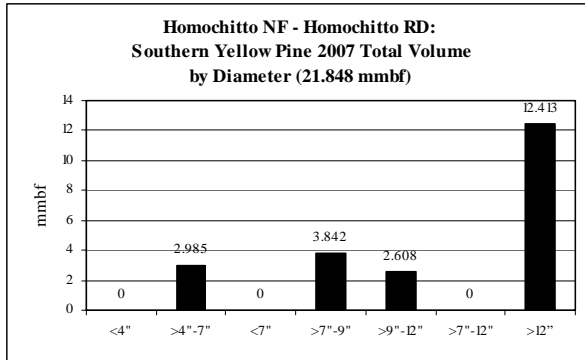
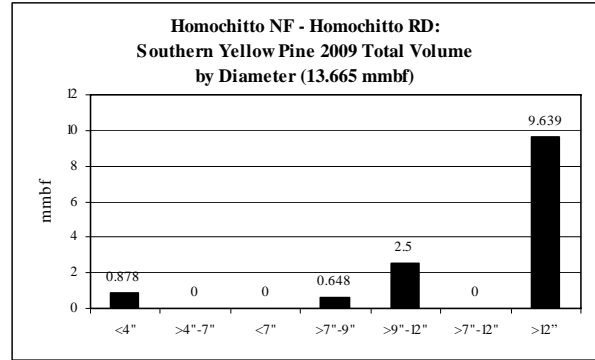
**Mississippi: Southern Yellow Pine CROP offering/removal '07 – '11  
(by agency)**

**ROM # SYP 1.3**

gT = green tons (up to 7" dbh)  
S = small log mmbf (>7"-12" dbh)  
L = large log mmbf (>12" dbh)

**B**

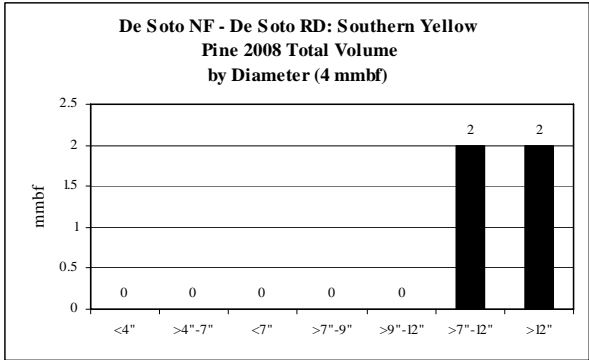
<b>Southern Yellow Pine Homochitto NF: Homochitto RD</b>	<b>5-yr = 49.436 mmbf</b>
	<ul style="list-style-type: none"> <li>• <b>Unlevel supply from year to year</b></li> </ul>
gT = 24,995	<ul style="list-style-type: none"> <li>• &lt;4" = 4% (2.014 mmbf)</li> <li>• &gt;4"-7" = 6% (2.985 mmbf)</li> <li>• &lt;7" = 0% (0 mmbf)</li> </ul>
S = 12.746	<ul style="list-style-type: none"> <li>• &gt;7"-9" = 10% (5.138 mmbf)</li> <li>• &gt;9"-12" = 15% (7.608 mmbf)</li> <li>• &gt;7"-12" = 0% (0 mmbf)</li> </ul>
L = 31.691	<ul style="list-style-type: none"> <li>• &gt;12" = 64% (31.691 mmbf)</li> </ul>



**Mississippi: Southern Yellow Pine CROP offering/removal '07 – '11  
(by agency)**

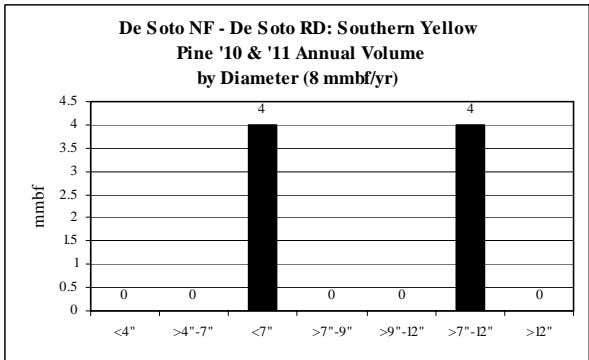
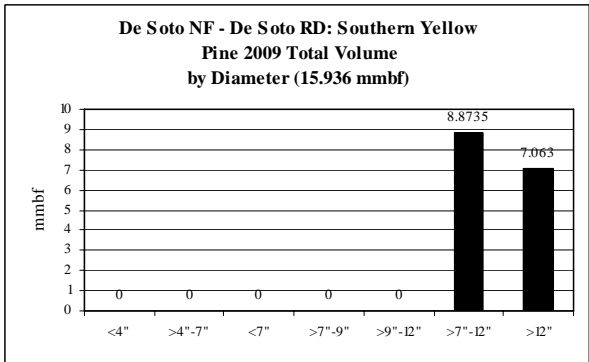
**ROM # SYP 1.4**

gT = green tons (up to 7" dbh)  
S = small log mmbf (>7"-12" dbh)  
L = large log mmbf (>12" dbh)



C

<b>Southern Yellow Pine De Soto NF: De Soto RD</b>	<b>5-yr = 35.936 mmbf</b>
	<ul style="list-style-type: none"> <li>No volume offered in 2007; unlevel supply in offering years</li> </ul>
gT = 40,0000	<ul style="list-style-type: none"> <li>&lt;4" = 0% (0 mmbf)</li> <li>&gt;4"-7" = 0% (0 mmbf)</li> <li>&lt;7" = 22% (8 mmbf)</li> </ul>
S = 18.873	<ul style="list-style-type: none"> <li>&gt;7"-9" = 0% (0 mmbf)</li> <li>&gt;9"-12" = 0% (0 mmbf)</li> <li>&gt;7"-12" = 53% (18.873 mmbf)</li> </ul>
L = 9.063	<ul style="list-style-type: none"> <li>&gt;12" = 25% (9.063 mmbf)</li> </ul>





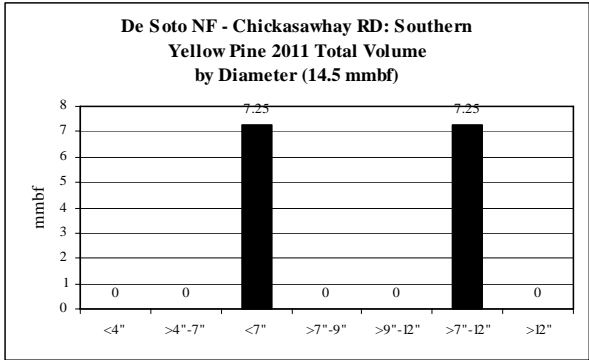
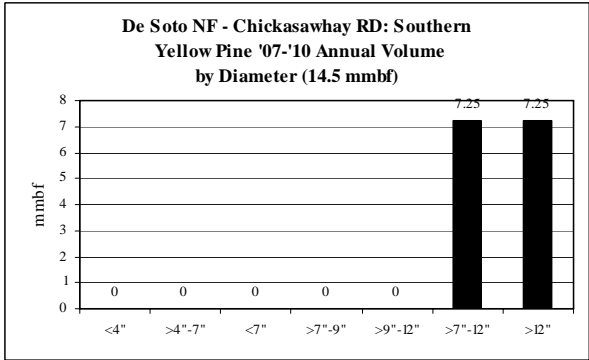
**Mississippi: Southern Yellow Pine CROP offering/removal '07 – '11  
(by agency)**

**ROM # SYP 1.5**

gT = green tons (up to 7" dbh)  
 S = small log mmbf (>7"-12" dbh)  
 L = large log mmbf (>12" dbh)

**D**

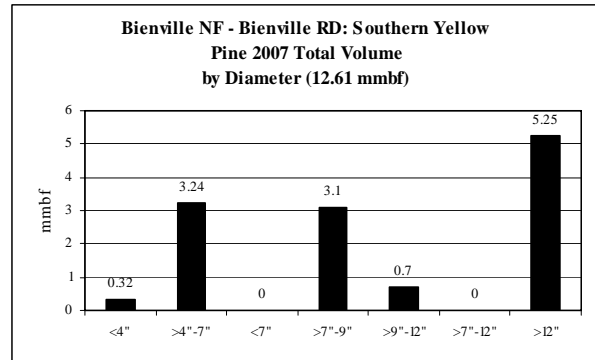
<b>Southern Yellow Pine De Soto NF: Chickasawhay RD</b>	<b>5-yr = 72.5 mmbf; 14.5 mmbf/yr</b>
	<ul style="list-style-type: none"> <li>• <b>Level supply from year to year</b></li> </ul>
gT = 36,250	<ul style="list-style-type: none"> <li>• &lt;4" = 0% (0 mmbf)</li> <li>• &gt;4"-7" = 0% (0 mmbf)</li> <li>• &lt;7" = 10% (7.25 mmbf)</li> </ul>
S = 36.25	<ul style="list-style-type: none"> <li>• &gt;7"-9" = 0% (0 mmbf)</li> <li>• &gt;9"-12" = 0% (0 mmbf)</li> <li>• &gt;7"-12" = 50% (36.25 mmbf)</li> </ul>
L = 29	<ul style="list-style-type: none"> <li>• &gt;12" = 40% (29 mmbf)</li> </ul>



**Mississippi: Southern Yellow Pine CROP offering/removal '07 – '11  
(by agency)**

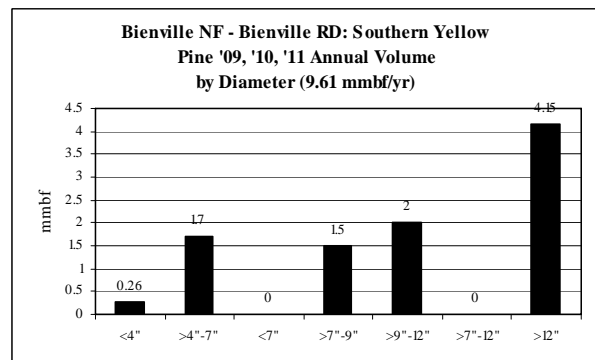
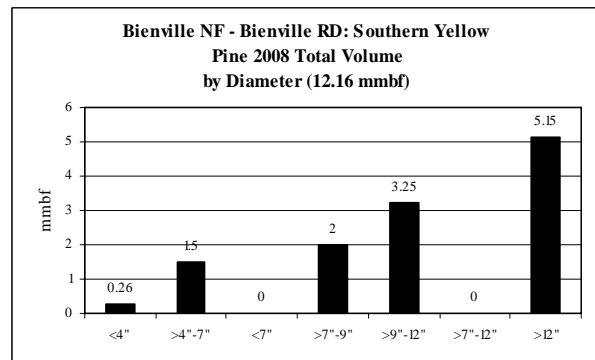
**ROM # SYP 1.6**

gT = green tons (up to 7" dbh)  
S = small log mmbf (>7"-12" dbh)  
L = large log mmbf (>12" dbh)



**E**

<b>Southern Yellow Pine Bienville NF: Bienville RD</b>	<b>5-yr = 53.6 mmbf</b>
	<ul style="list-style-type: none"> <li>Fairly level supply from year to year</li> </ul>
gT = 56,000	<ul style="list-style-type: none"> <li>&lt;4" = 2% (1.36 mmbf)</li> <li>&gt;4"-7" = 18% (9.84 mmbf)</li> <li>&lt;7" = 0% (0 mmbf)</li> </ul>
S = 19.55	<ul style="list-style-type: none"> <li>&gt;7"-9" = 18% (9.6 mmbf)</li> <li>&gt;9"-12" = 19% (9.95 mmbf)</li> <li>&gt;7"-12" = 0% (0 mmbf)</li> </ul>
L = 22.85	<ul style="list-style-type: none"> <li>&gt;12" = 43% (22.85 mmbf)</li> </ul>



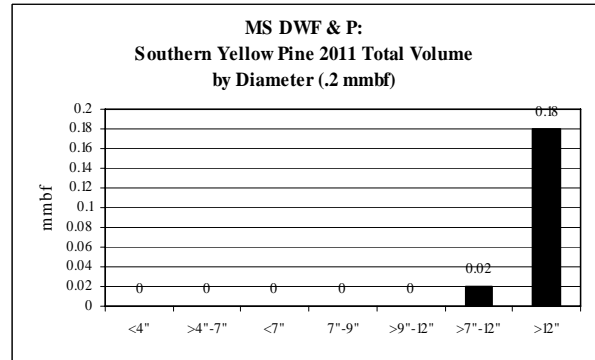
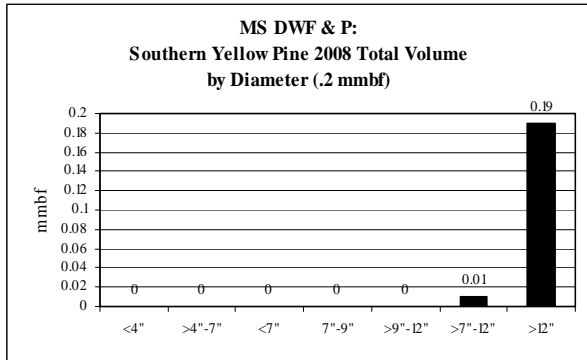
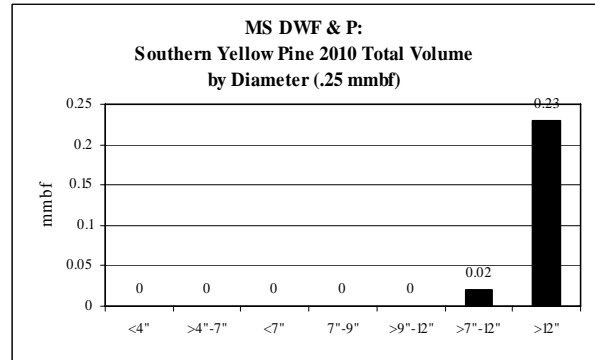
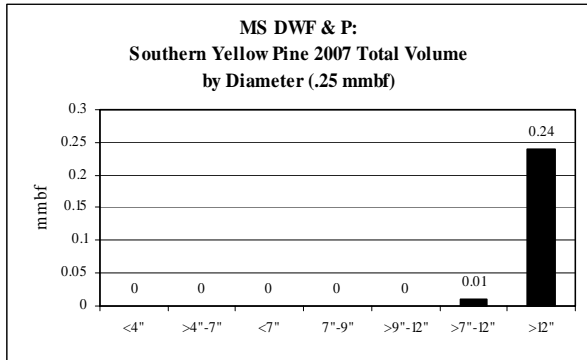
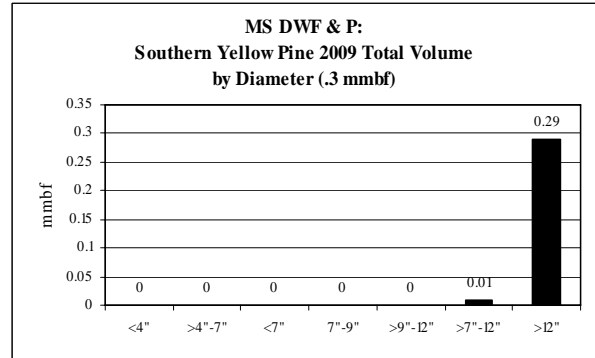
**Mississippi: Southern Yellow Pine CROP offering/removal '07 – '11  
(by agency)**

**ROM # SYP 1.7**

gT = green tons (up to 7" dbh)  
S = small log mmbf (>7"-12" dbh)  
L = large log mmbf (>12" dbh)

**F**

<b>Southern Yellow Pine MS DWF &amp; P</b>	<b>5-yr = 1.2 mmbf</b>
	<ul style="list-style-type: none"> <li>Fairly level supply from year to year</li> </ul>
gT = 0	<ul style="list-style-type: none"> <li>&lt;4" = 0% (0 mmbf)</li> <li>&gt;4"-7" = 0% (0 mmbf)</li> <li>&lt;7" = 0% (0 mmbf)</li> </ul>
S = .07	<ul style="list-style-type: none"> <li>&gt;7"-9" = 0% (0 mmbf)</li> <li>&gt;9"-12" = 0% (0 mmbf)</li> <li>&gt;7"-12" = 6% (.07 mmbf)</li> </ul>
L = 1.13	<ul style="list-style-type: none"> <li>&gt;12" = 94% (1.13 mmbf)</li> </ul>

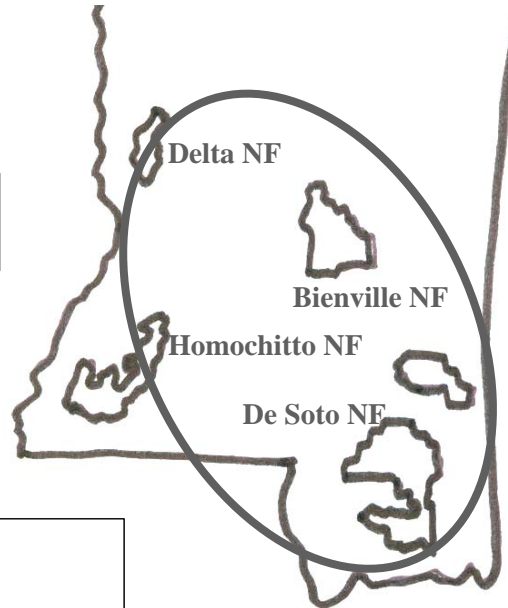


**Mississippi: Waxy Species CROP offering/removal '07 – '11**  
**(gT = 60,000 / S = 8 mmbf / L = 0 mmbf)**

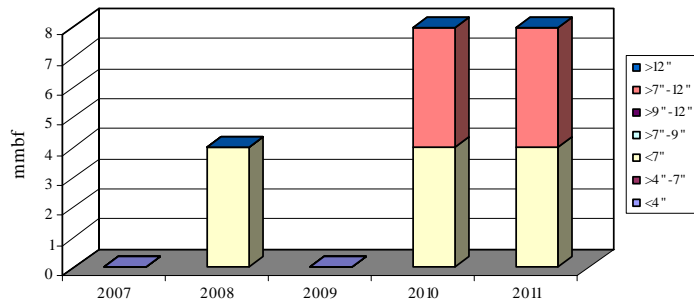
**ROM # Waxy sp 1**

gT = green tons (up to 7" dbh)  
 S = small log mmbf (>7"-12" dbh)  
 L = large log mmbf (>12" dbh)

**De Soto NF: 1 RD – 100%**  
**(gT = 60,000 / S = 8 / L = 0)**



**All Agencies: Waxy Species (5-yr total = 20 mmbf)**  
 12 mmbf is <7" = 60,000 gT of biomass  
 8 mmbf is >7"-12" = small logs  
 0 mmbf is >12" = large logs



	gT	mmbf	
	Biomass	Small Log	Large Log
2007	0	0	0
2008	20000	0	0
2009	0	0	0
2010	20000	4	0
2011	20000	4	0
Totals	60000	8	0
%	60%	40%	0%
mmbf	12		

**Mississippi: *Waxy Species* CROP offering/removal '07 – '11**  
( $gT = 60,000 / S = 8 \text{ mmbf} / L = 0 \text{ mmbf}$ )

ROM # **Waxy sp 1.1**

*Waxy sp = waxy species*

**Delta NF:**

A Delta RD

**Homochitto NF:**

B Homochitto RD

**De Soto NF:**

C ***De Soto RD*** \* ( $gT = 60,000 / S = 8 / L = 0$ )

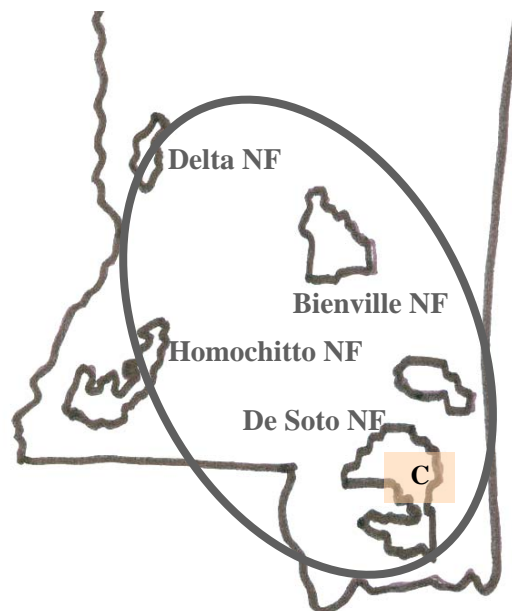
D Chickasawhay RD

**Bienville NF:**

E Bienville RD

**MS DWF & P:**

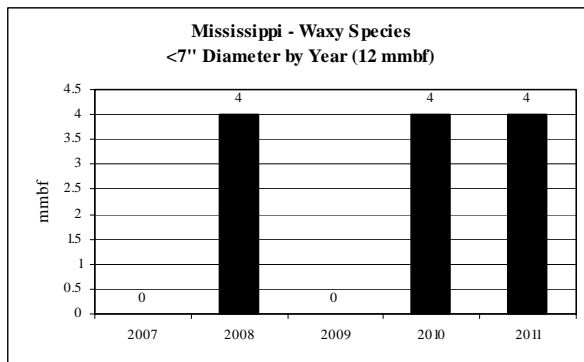
F MS DWF & P



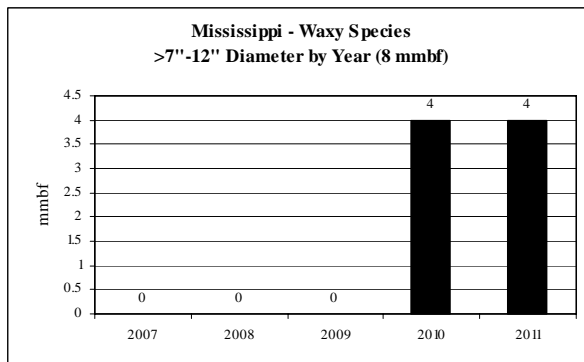
\*italics/bold = species offering in CROP

**Waxy Species: Diameter by Year**

**ROM # Waxy sp 1.2**



Note: no <4" or >12" dbh. No further diameter breakouts for >7"-12"



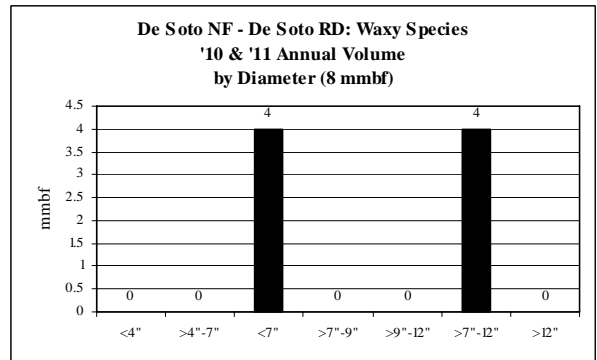
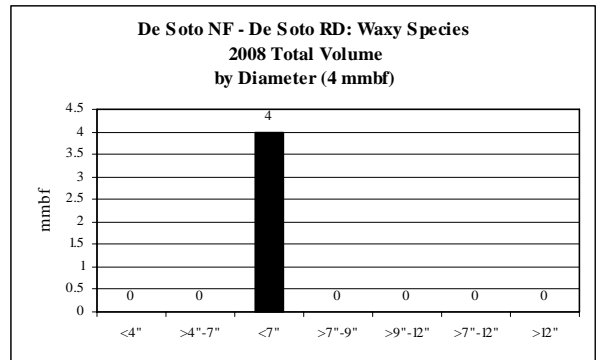
**Mississippi: Waxy Species CROP offering/removal '07 – '11  
(by agency)**

**ROM # Waxy sp 1.3**

gT = green tons (up to 7" dbh)  
S = small log mmbf (>7"-12" dbh)  
L = large log mmbf (>12" dbh)

**C**

<b>Waxy Species De Soto NF: De Soto RD</b>	<b>5-yr = 20 mmbf</b>
	<ul style="list-style-type: none"> <li>• <b>No volume offering in '07 &amp; '09</b></li> </ul>
gT = 60,000	<ul style="list-style-type: none"> <li>• &lt;4" = 0% (0 mmbf)</li> <li>• &gt;4"-7" = 0% (0 mmbf)</li> <li>• &lt;7" = 60% (12 mmbf)</li> </ul>
S = 8	<ul style="list-style-type: none"> <li>• &gt;7"-9" = 0% (0 mmbf)</li> <li>• &gt;9"-12" = 0% (0 mmbf)</li> <li>• &gt;7"-12" = 40% (8 mmbf)</li> </ul>
L = 0	<ul style="list-style-type: none"> <li>• &gt;12" = 0% (0 mmbf)</li> </ul>



**Mississippi: Gum Species CROP offering/removal '07 - '11**  
**(gT = 4,472 / S = 5.131 mmbf / L = 3.982 mmbf)**

**ROM # Gum sp 1**

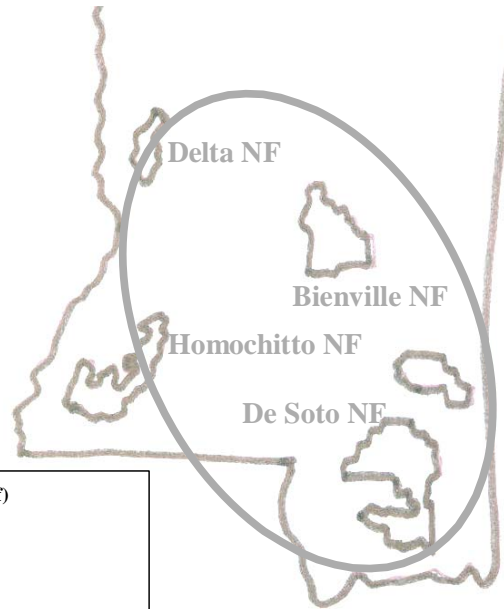
gT = green tons (up to 7" dbh)  
 S = small log mmbf (>7"-12" dbh)  
 L = large log mmbf (>12" dbh)

**Delta NF: 1 RD - 20%**  
**(gT = 0 / S = .39 / L = 1.56)**

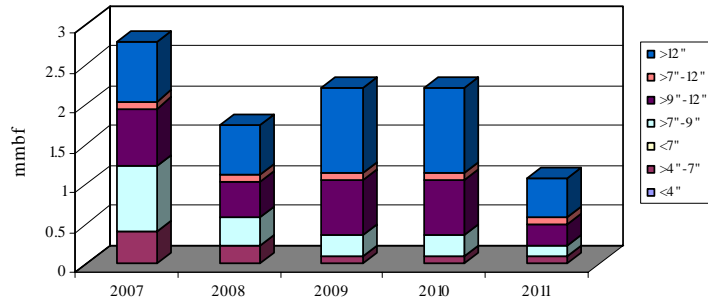
**Homochitto NF: 1 RD - 38%**  
**(gT = 1,592 / S = 2.096 / L = 1.435)**

**Bienville NF: 1 RD - 41%**  
**(gT = 2,880 / S = 2.596 / L = .967)**

**MS DWF & P - <1%**  
**(gT = 0 / S = .049 / L = .02)**



**All Agencies: Gum Species (5-yr total = 10.008 mmbf)**  
 .894 mmbf is <7" = 4,472 gT of biomass  
 5.131 mmbf is >7"-12" = small logs  
 3.982 mmbf is >12" = large logs



	gT	mmbf	
	Biomass	Small Log	Large Log
2007	1997	1.6455	0.7362
2008	1125	0.898	0.6135
2009	450	1.0468	1.0658
2010	450	1.0478	1.0658
2011	450	0.493	0.501
Totals	4472	5.1311	3.9823
%	9%	51%	40%
mmbf	0.8944		

**10.0078**



**Mississippi: *Gum Species* CROP offering/removal '07 – '11**  
**(gT = 4,472 / S = 5.131 mmbf / L = 3.982 mmbf)**

**ROM # Gum sp 1.1**

*Gum sp = gum species*

**Delta NF:**

**A** *Delta RD* \* ( $gT = 0 / S = .39 / L = 1.56$ )

**Homochitto NF:**

**B** *Homochitto RD* ( $gT = 1,592 / S = 2.096 / L = 1.435$ )

**De Soto NF:**

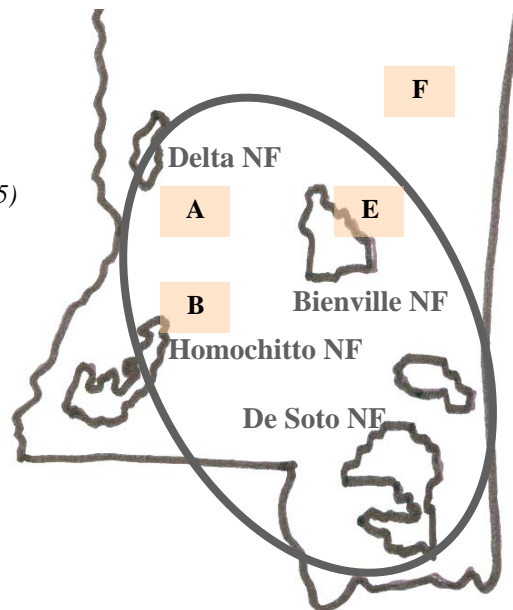
**C** De Soto RD  
**D** Chickasawhay RD

**Bienville NF:**

**E** *Bienville RD* ( $gT = 2,880 / S = 2.596 / L = .967$ )

**MS DWF & P:**

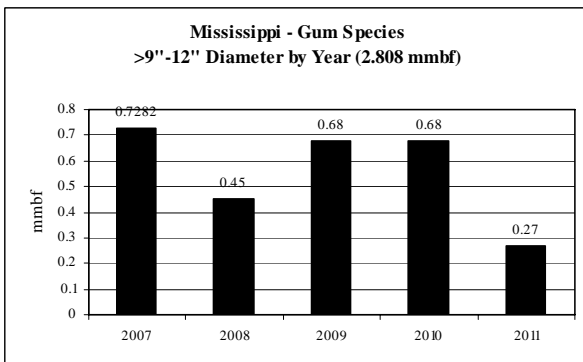
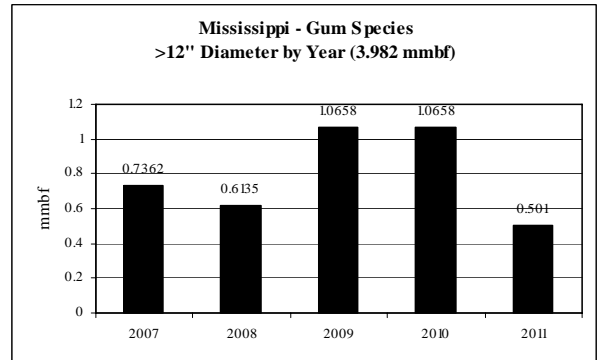
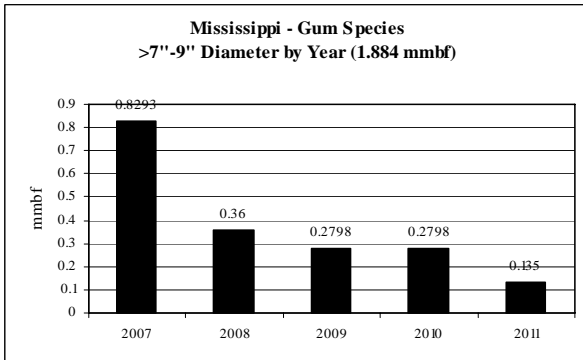
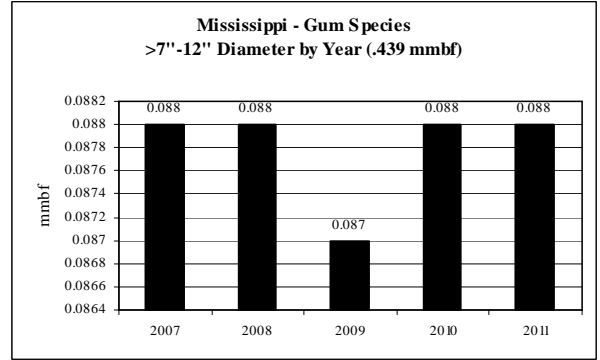
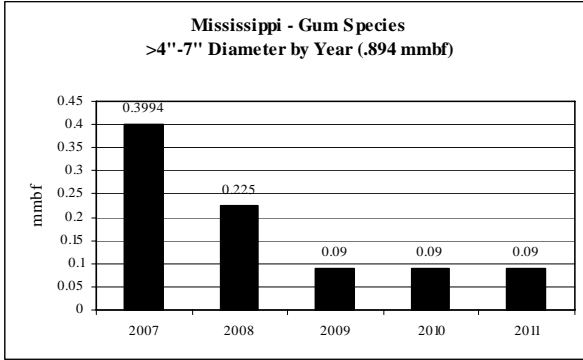
**F** *MS DWF & P* ( $gT = 0 / S = .049 / L = .02$ )



\*italics/bold = species offering in CROP

**Mississippi: Diameter by Year**

**ROM # Gum sp 1.2**



Note: no <4" dbh

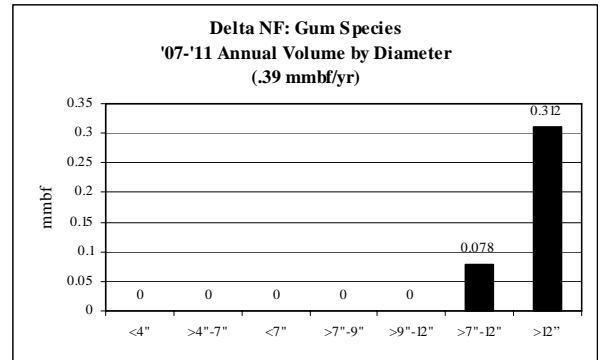
**Mississippi: Gum Species CROP offering/removal '07 – '11  
(by agency)**

**ROM # Gum sp 1.3**

gT = green tons (up to 7" dbh)  
S = small log mmbf (>7"-12" dbh)  
L = large log mmbf (>12" dbh)

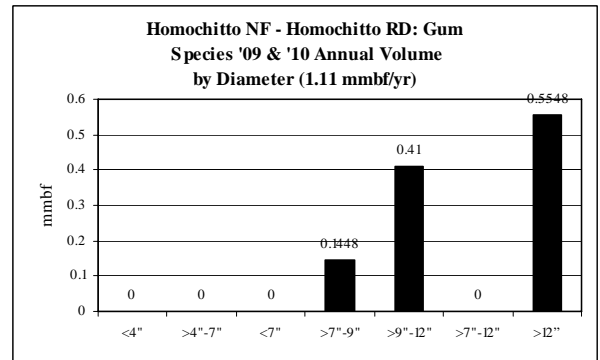
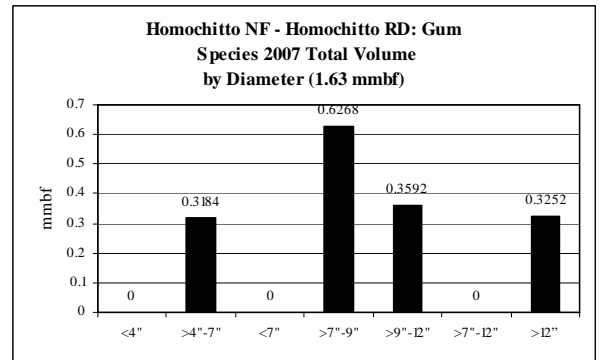
**A**

<b>Gum Species Delta NF: Delta RD</b>	<b>5-yr = 1.95 mmbf; .39 mmbf/yr</b>
	<ul style="list-style-type: none"> <li>• <b>Level supply from year to year</b></li> </ul>
gT = 0	<ul style="list-style-type: none"> <li>• &lt;4" = 0% (0 mmbf)</li> <li>• &gt;4"-7" = 0% (0 mmbf)</li> <li>• &lt;7" = 0% (0 mmbf)</li> </ul>
S = .39	<ul style="list-style-type: none"> <li>• &gt;7"-9" = 0% (0 mmbf)</li> <li>• &gt;9"-12" = 0% (0 mmbf)</li> <li>• &gt;7"-12" = 20% (.39 mmbf)</li> </ul>
L = 1.56	<ul style="list-style-type: none"> <li>• &gt;12" = 80% (1.56 mmbf)</li> </ul>



**B**

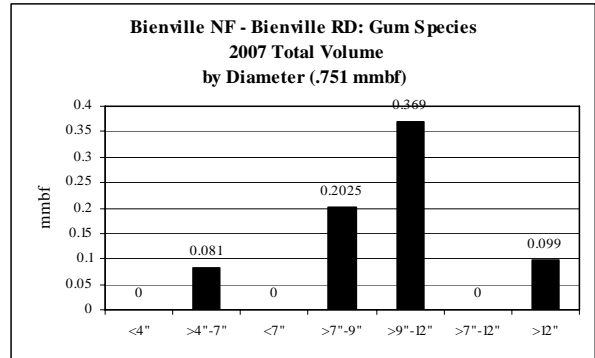
<b>Gum Species Homochitto NF: Homochitto RD</b>	<b>5-yr = 3.849 mmbf</b>
	<ul style="list-style-type: none"> <li>• <b>No volume offered in '08 &amp; '11</b></li> </ul>
gT = 1,592	<ul style="list-style-type: none"> <li>• &lt;4" = 0% (0 mmbf)</li> <li>• &gt;4"-7" = 8% (.318 mmbf)</li> <li>• &lt;7" = 0% (0 mmbf)</li> </ul>
S = 2.096	<ul style="list-style-type: none"> <li>• &gt;7"-9" = 24% (.916 mmbf)</li> <li>• &gt;9"-12" = 31% (1.179 mmbf)</li> <li>• &gt;7"-12" = 0% (0 mmbf)</li> </ul>
L = 1.435	<ul style="list-style-type: none"> <li>• &gt;12" = 37% (1.435 mmbf)</li> </ul>



Mississippi: Gum Species CROP offering/removal '07 – '11  
(by agency)

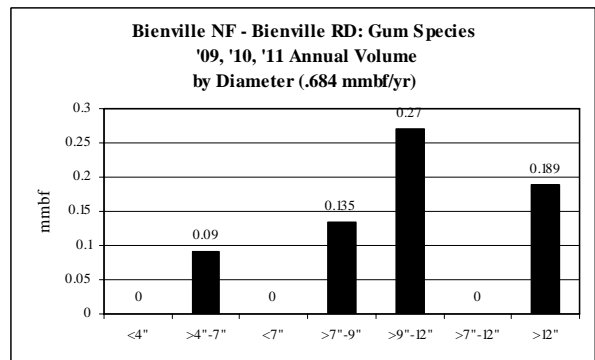
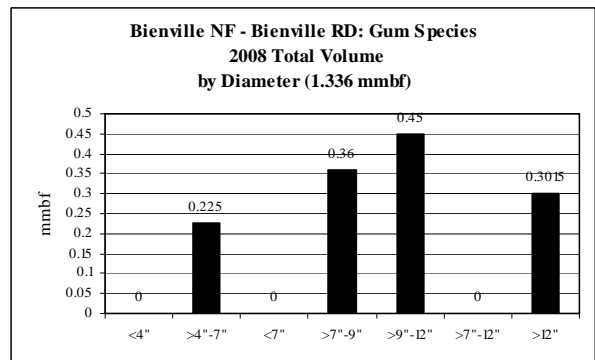
ROM # Gum sp 1.4

gT = green tons (up to 7" dbh)  
S = small log mmbf (>7"-12" dbh)  
L = large log mmbf (>12" dbh)



**E**

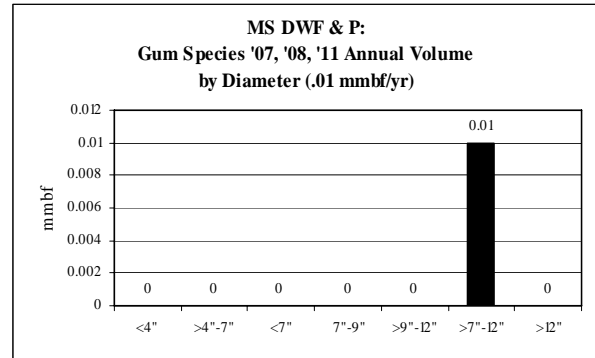
<b>Gum Species Bienville NF: Bienville RD</b>	<b>5-yr = 4.14 mmbf</b>
	<ul style="list-style-type: none"> <li>• <b>Unlevel supply from year to year</b></li> </ul>
gT = 2,880	<ul style="list-style-type: none"> <li>• &lt;4" = 0% (0 mmbf)</li> <li>• &gt;4"-7" = 14% (.576 mmbf)</li> <li>• &lt;7" = 0% (0 mmbf)</li> </ul>
S = 2.596	<ul style="list-style-type: none"> <li>• &gt;7"-9" = 23% (.967 mmbf)</li> <li>• &gt;9"-12" = 40% (1.629 mmbf)</li> <li>• &gt;7"-12" = 0% (0 mmbf)</li> </ul>
L = .967	<ul style="list-style-type: none"> <li>• &gt;12" = 23% (.967 mmbf)</li> </ul>



**Mississippi: Gum Species CROP offering/removal '07 – '11  
(by agency)**

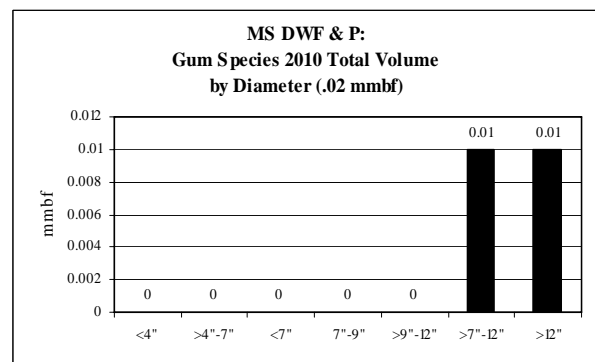
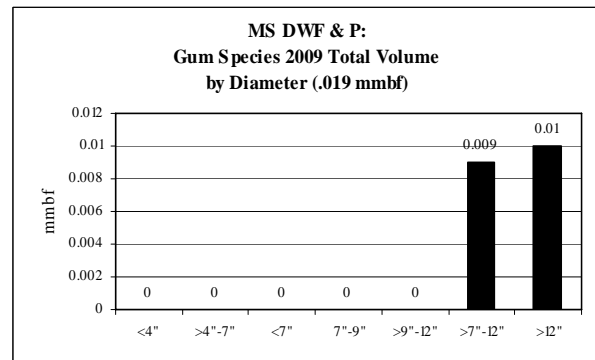
**ROM # Gum sp 1.5**

gT = green tons (up to 7" dbh)  
S = small log mmbf (>7"-12" dbh)  
L = large log mmbf (>12" dbh)



**F**

<b>Gum Species MS DWF &amp; P</b>	<b>5-yr = 1.2 mmbf</b>
	<ul style="list-style-type: none"> <li>Fairly level supply from year to year</li> </ul>
gT = 0	<ul style="list-style-type: none"> <li>&lt;4" = 0% (0 mmbf)</li> <li>&gt;4"-7" = 0% (0 mmbf)</li> <li>&lt;7" = 0% (0 mmbf)</li> </ul>
S = .07	<ul style="list-style-type: none"> <li>&gt;7"-9" = 0% (0 mmbf)</li> <li>&gt;9"-12" = 0% (0 mmbf)</li> <li>&gt;7"-12" = 6% (.07 mmbf)</li> </ul>
L = 1.13	<ul style="list-style-type: none"> <li>&gt;12" = 94% (1.13 mmbf)</li> </ul>



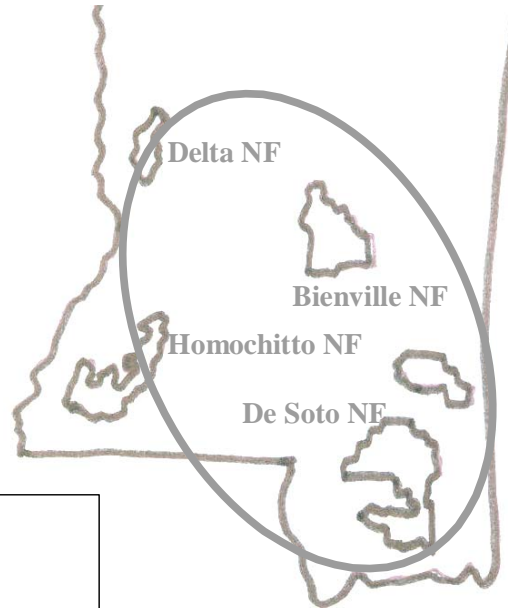
**Mississippi: Red Oak CROP offering/removal '07 – '11**  
**(gT = 1,152 / S = 2.539 mmbf / L = 6.387 mmbf)**

**ROM # RO 1**

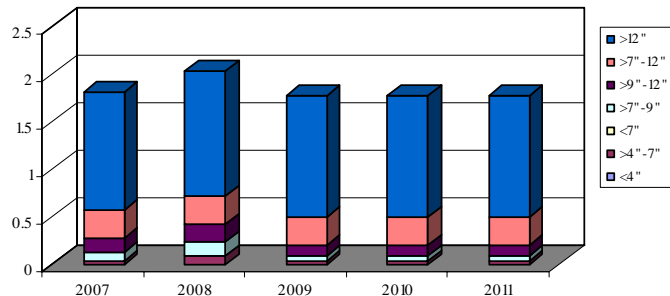
gT = green tons (up to 7" dbh)  
 S = small log mmbf (>7"-12" dbh)  
 L = large log mmbf (>12" dbh)

**Delta NF: 1 RD – 82%**  
**(gT = 0 / S = 1.5 / L = 6)**

**Bienville NF: 1 RD – 18%**  
**(gT = 1,152 / S = 1.039 / L = .387)**



**All Agencies: Red Oak (5-yr total = 9.156 mmbf)**  
 .23 mmbf is <7" = 1,152 gT of biomass  
 2.539 mmbf is >7"-12" = small logs  
 6.387 mmbf is >12" = large logs



	gT	mmbf	
	Biomass	Small Log	Large Log
2007	162	0.5286	1.2396
2008	450	0.624	1.3206
2009	180	0.462	1.2756
2010	180	0.462	1.2756
2011	180	0.462	1.2756
Totals	1152	2.5386	6.387
%	3%	28%	70%
mmbf	0.2304		

**9.156**

**Mississippi: Red Oak CROP offering/removal '07 - '11**  
(gT = 1,152 / S = 2.539 mmbf / L = 6.387 mmbf)

**ROM # RO 1.1**

RO = red oak

**Delta NF:**

A ***Delta RD*** \*(gT = 0 / S = 1.5 / L = 6)

**Homochitto NF:**

B Homochitto RD

**De Soto NF:**

C De Soto RD

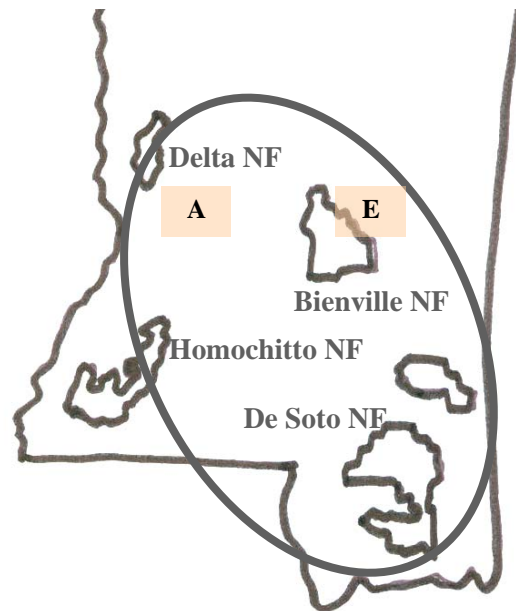
D Chickasawhay RD

**Bienville NF:**

E ***Bienville RD*** (gT = 1,152 / S = 1.039 / L = .387)

**MS DWF & P:**

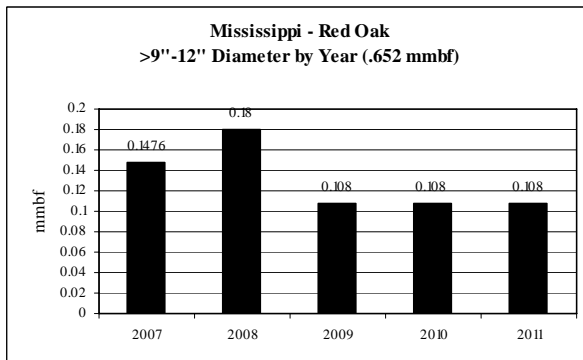
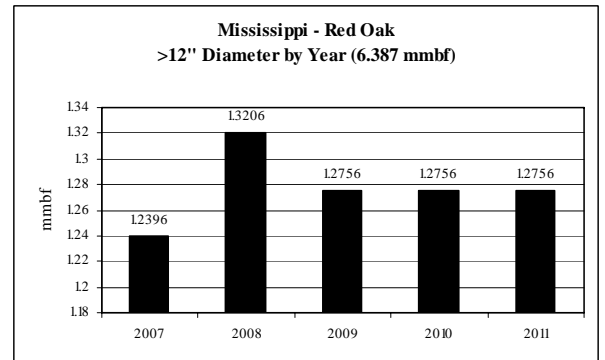
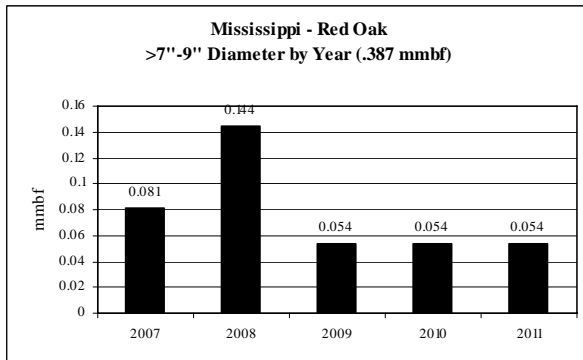
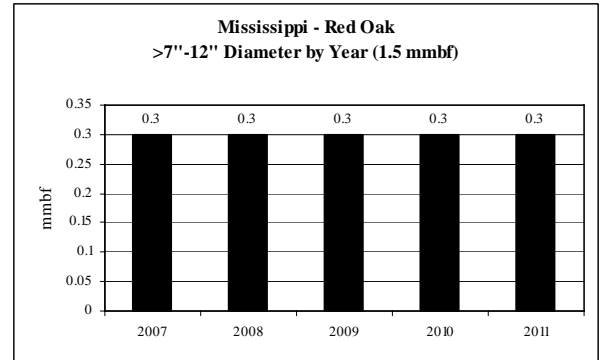
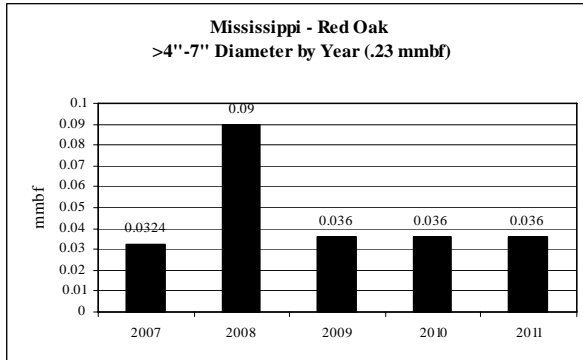
F MS DWF & P



\*italics/bold = species offering in CROP

**Red Oak: Diameter by Year**

**ROM # RO 1.2**



Note: no <4" dbh



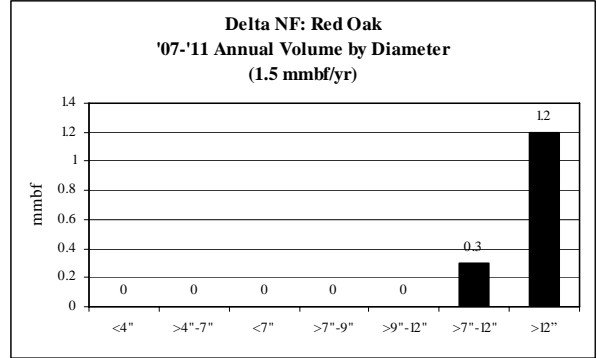
**Mississippi: Red Oak CROP offering/removal '07 – '11  
(by agency)**

**ROM # RO 1.3**

gT = green tons (up to 7" dbh)  
S = small log mmbf (>7"-12" dbh)  
L = large log mmbf (>12" dbh)

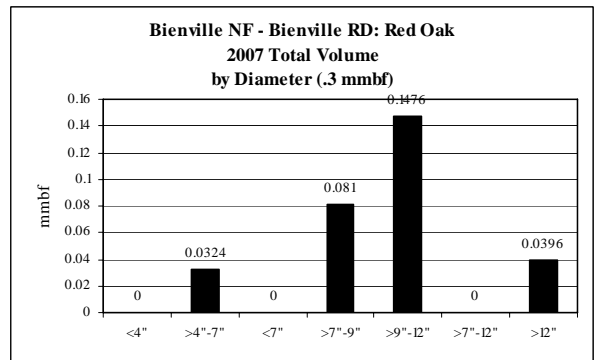
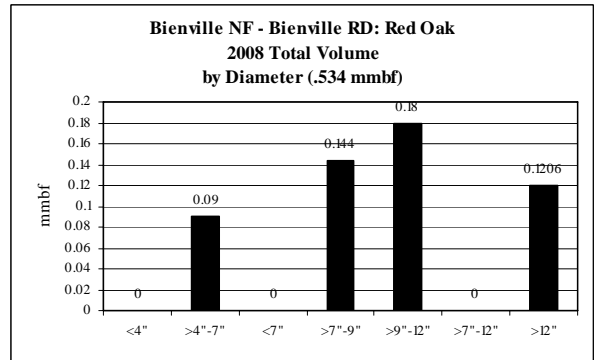
**A**

<b>Red Oak Delta NF: Delta RD</b>	<b>5-yr = 7.5 mmbf; 1.5 mmbf/yr</b>
	<ul style="list-style-type: none"> <li>• <b>Level supply from year to year</b></li> </ul>
gT = 0	<ul style="list-style-type: none"> <li>• &lt;4" = 0% (0 mmbf)</li> <li>• &gt;4"-7" = 0% (0 mmbf)</li> <li>• &lt;7" = 0% (0 mmbf)</li> </ul>
S = 1.5	<ul style="list-style-type: none"> <li>• &gt;7"-9" = 0% (0 mmbf)</li> <li>• &gt;9"-12" = 0% (0 mmbf)</li> <li>• &gt;7"-12" = 20% (1.5 mmbf)</li> </ul>
L = 6	<ul style="list-style-type: none"> <li>• &gt;12" = 80% (6 mmbf)</li> </ul>



**E**

<b>Red Oak Bienville NF: Bienville RD</b>	<b>5-yr = 1.656 mmbf</b>
	<ul style="list-style-type: none"> <li>• <b>Fairly level supply from year to year</b></li> </ul>
gT = 1,152	<ul style="list-style-type: none"> <li>• &lt;4" = 0% (0 mmbf)</li> <li>• &gt;4"-7" = 14% (.23 mmbf)</li> <li>• &lt;7" = 0% (0 mmbf)</li> </ul>
S = 1.039	<ul style="list-style-type: none"> <li>• &gt;7"-9" = 23% (.387 mmbf)</li> <li>• &gt;9"-12" = 40% (.652 mmbf)</li> <li>• &gt;7"-12" = 0% (0 mmbf)</li> </ul>
L = .387	<ul style="list-style-type: none"> <li>• &gt;12" = 23% (.387 mmbf)</li> </ul>



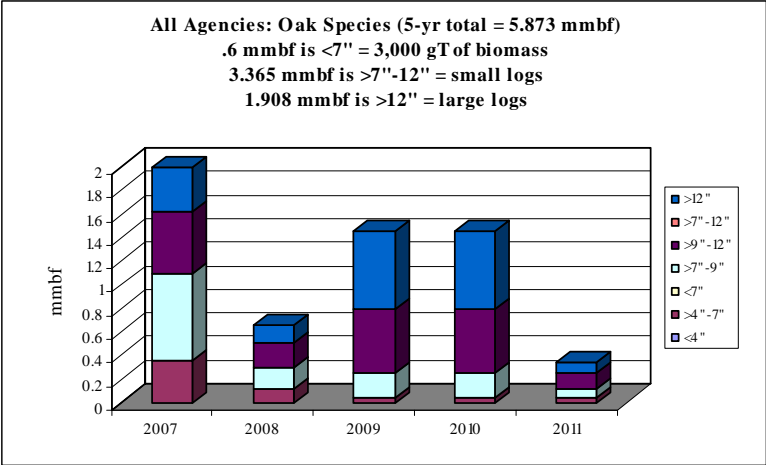
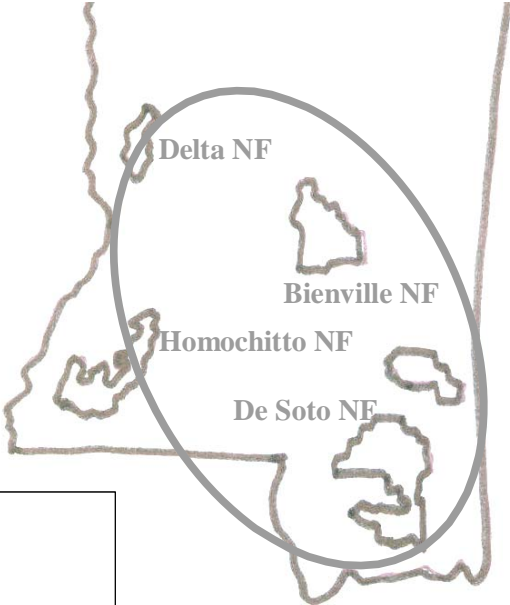
**Mississippi: Oak Species CROP offering/removal '07 – '11  
(gT = 3,000 / S = 3.365 mmbf / L = 1.908 mmbf)**

**ROM # Oak sp 1**

gT = green tons (up to 7" dbh)  
S = small log mmbf (>7"-12" dbh)  
L = large log mmbf (>12" dbh)

**Homochitto NF: 1 RD – 66%  
(gT = 1,592 / S = 2.096 / L = 1.435)**

**Bienville NF: 1 RD – 34%  
(gT = 1,408 / S = 1.269 / L = .473)**



	gT	mmbf	
	Biomass	Small Log	Large Log
2007	1790	1.2654	0.3736
2008	550	0.396	0.1474
2009	220	0.7528	0.6472
2010	220	0.7528	0.6472
2011	220	0.198	0.0924
<b>Totals</b>	<b>3000</b>	<b>3.365</b>	<b>1.9078</b>
%	10%	57%	32%
mmbf	0.6		

**5.8728**

**Mississippi: Oak Species CROP offering/removal '07 – '11**  
(gT = 3,000 / S = 3.365 mmbf / L = 1.908 mmbf)

**ROM # Oak sp 1.1**

*Oak sp= oak species*

**Delta NF:**

A Delta RD

**Homochitto NF:**

**B** *Homochitto RD* \* (gT = 1,592 / S = 2.094 / L = 1.435)

**De Soto NF:**

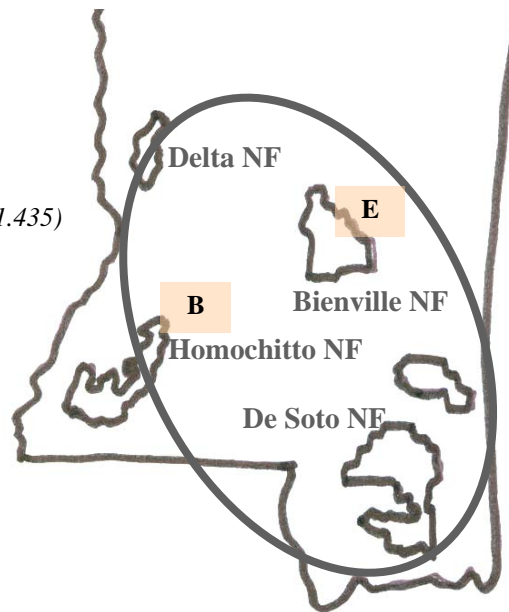
C De Soto RD  
D Chickasawhay RD

**Bienville NF:**

**E** *Bienville RD* (gT = 1,408 / S = 1,269 / L = .473)

**MS DWF & P:**

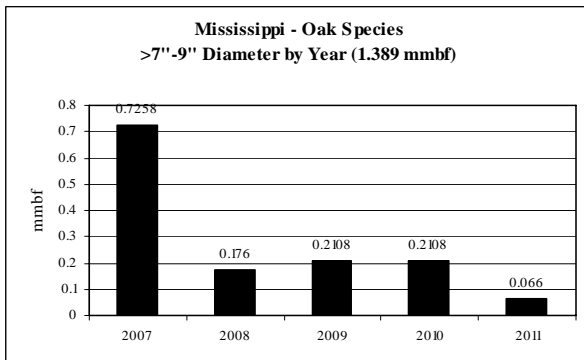
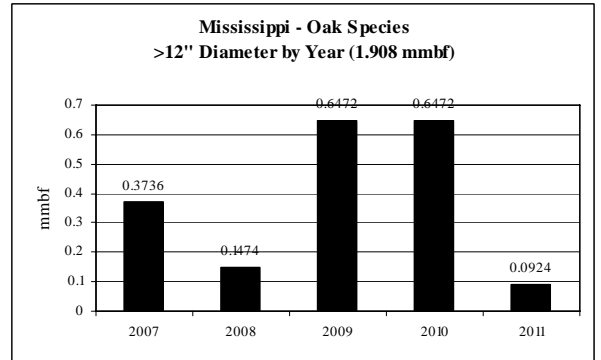
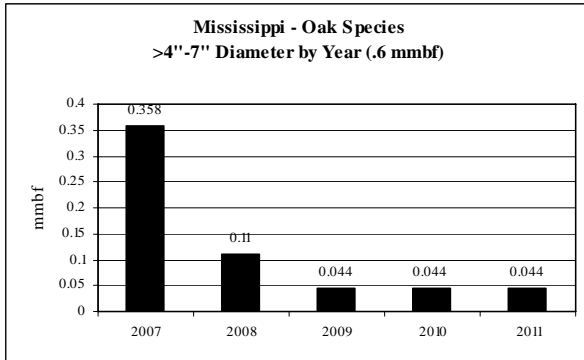
F MS DWF & P



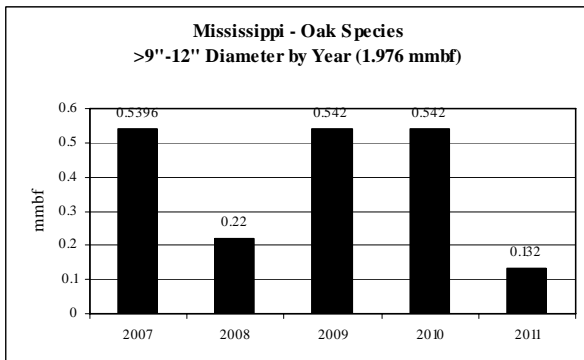
\*italics/bold = species offering in CROP

**Mississippi: Diameter by Year**

**ROM # Oak sp 1.2**



Note: no <4" dbh



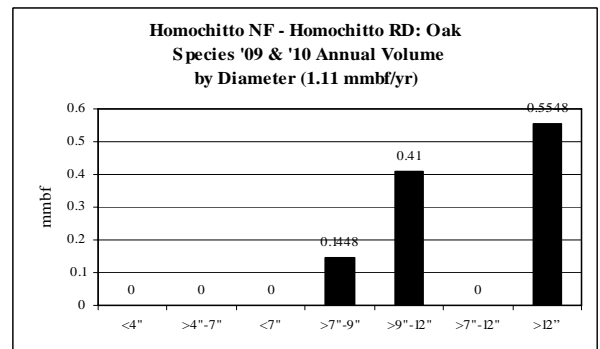
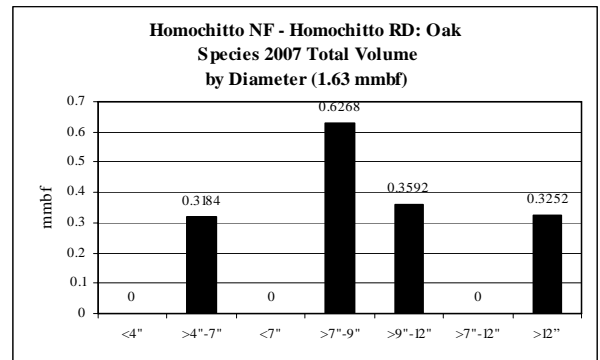
**Mississippi: Oak Species CROP offering/removal '07 – '11  
(by agency)**

**ROM # Oak sp 1.3**

gT = green tons (up to 7" dbh)  
S = small log mmbf (>7"-12" dbh)  
L = large log mmbf (>12" dbh)

**B**

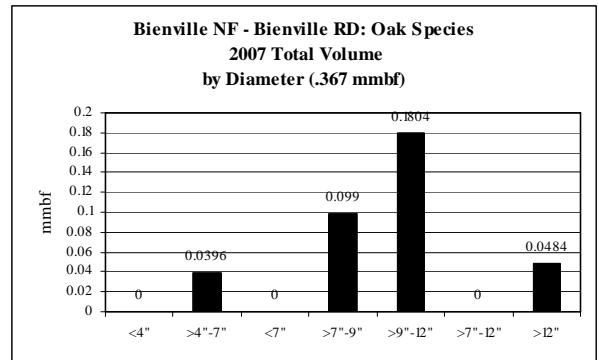
<b>Oak Species Homochitto NF: Homochitto RD</b>	<b>5-yr = 3.849 mmbf</b>
	<ul style="list-style-type: none"> <li>• No offering in '08 &amp; '11</li> </ul>
gT = 1,592	<ul style="list-style-type: none"> <li>• &lt;4" = 0% (0 mmbf)</li> <li>• &gt;4"-7" = 8% (.318 mmbf)</li> <li>• &lt;7" = 0% (0 mmbf)</li> </ul>
S = 2.096	<ul style="list-style-type: none"> <li>• &gt;7"-9" = 24% (.916 mmbf)</li> <li>• &gt;9"-12" = 31% (1.179 mmbf)</li> <li>• &gt;7"-12" = 0% (0 mmbf)</li> </ul>
L = 1.435	<ul style="list-style-type: none"> <li>• &gt;12" = 37% (1.435 mmbf)</li> </ul>



**Mississippi: Oak Species CROP offering/removal '07 – '11  
(by agency)**

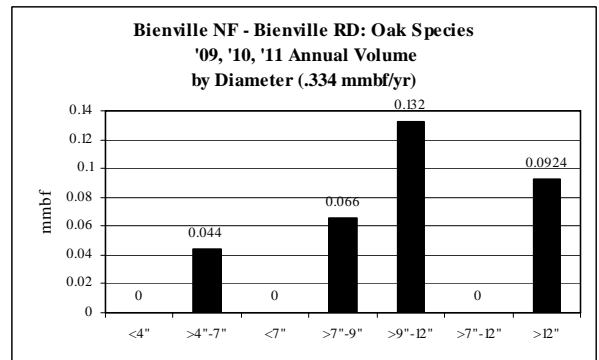
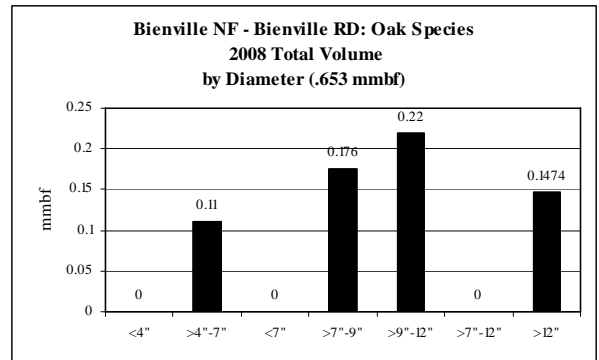
**ROM # Oak sp 1.4**

gT = green tons (up to 7" dbh)  
S = small log mmbf (>7"-12" dbh)  
L = large log mmbf (>12" dbh)



**E**

<b>Oak Species Bienville NF: Bienville RD</b>	<b>5-yr = 2.024 mmbf</b>
	<ul style="list-style-type: none"> <li>Fairly level supply from year to year</li> </ul>
gT = 1,408	<ul style="list-style-type: none"> <li>&lt;4" = 0% (0 mmbf)</li> <li>&gt;4"-7" = 14% (.282 mmbf)</li> <li>&lt;7" = 0% (0 mmbf)</li> </ul>
S = 1.269	<ul style="list-style-type: none"> <li>&gt;7"-9" = 23% (.473 mmbf)</li> <li>&gt;9"-12" = 40% (.796 mmbf)</li> <li>&gt;7"-12" = 0% (0 mmbf)</li> </ul>
L = .473	<ul style="list-style-type: none"> <li>&gt;12" = 23% (.473 mmbf)</li> </ul>



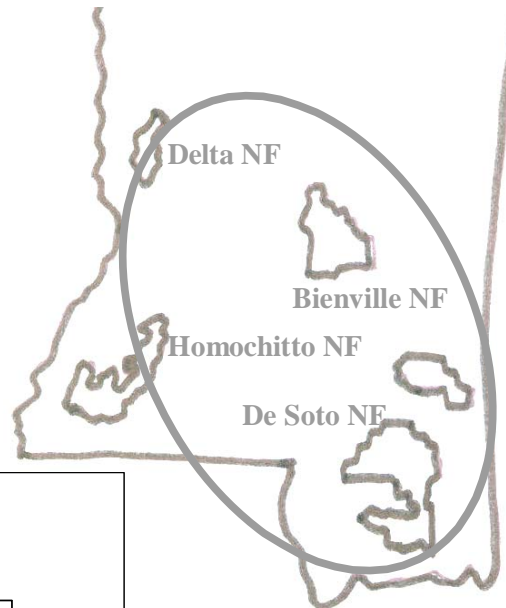
**Mississippi: Hardwoods CROP offering/removal '07 - '11**  
**(gT = 192 / S = .923 mmbf / L = 3.064 mmbf)**

**ROM # HWD 1**

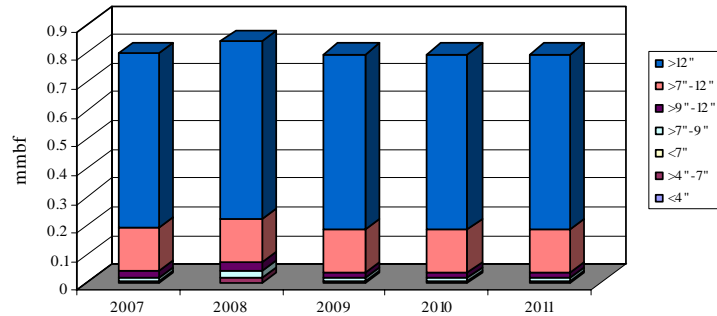
gT = green tons (up to 7" dbh)  
 S = small log mmbf (>7"-12" dbh)  
 L = large log mmbf (>12" dbh)

**Delta NF: 1 NF - 93%**  
**(gT = 0 / S = .75 / L = 3)**

**Bienville NF: 1 RD - 7%**  
**(gT = 192 / S = .173 / L = .064)**



**All Agencies: Hardwoods (5-yr total = 4.026 mmbf)**  
**.038 mmbf is <7" = 192 gT of biomass**  
**.923 mmbf is >7"-12" = small logs**  
**3.064 mmbf is >12" = large logs**



	gT	mmbf	
	Biomass	Small Log	Large Log
2007	27	0.1881	0.6066
2008	75	0.204	0.6201
2009	30	0.177	0.6126
2010	30	0.177	0.6126
2011	30	0.177	0.6126
Totals	192	0.9231	3.0645
%	1%	23%	76%
mmbf	0.0384		

**4.026**

**Mississippi: *Hardwoods* CROP offering/removal '07 – '11**  
(***gT = 192 / S = .923 mmbf / L = 3.064 mmbf***)

**ROM # HWD 1.1**

*HWD = hardwoods*

**Delta NF:**

**A** *Delta RD* \* ( $gT = 0 / S = .75 / L = 3$ )

**Homochitto NF:**

**B** Homochitto RD

**De Soto NF:**

**C** De Soto RD

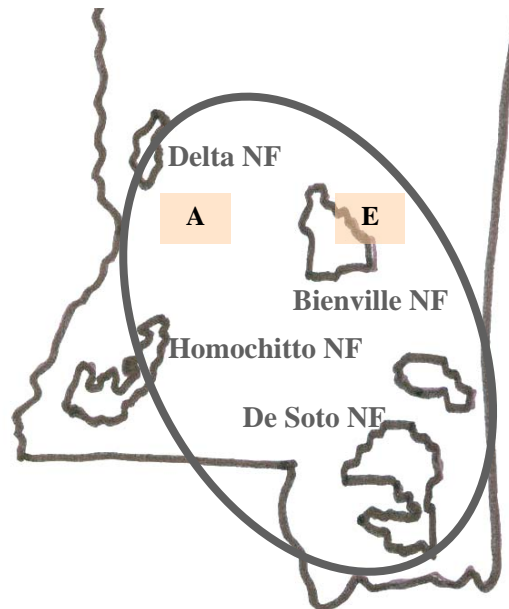
**D** Chickasawhay RD

**Bienville NF:**

**E** *Bienville RD* ( $gT = 192 / S = .173 / L = .064$ )

**MS DWF & P:**

**F** MS DWF & P

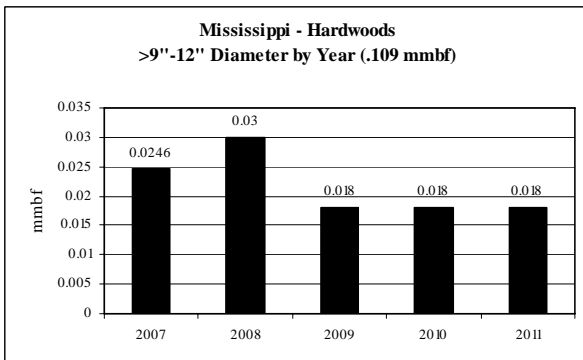
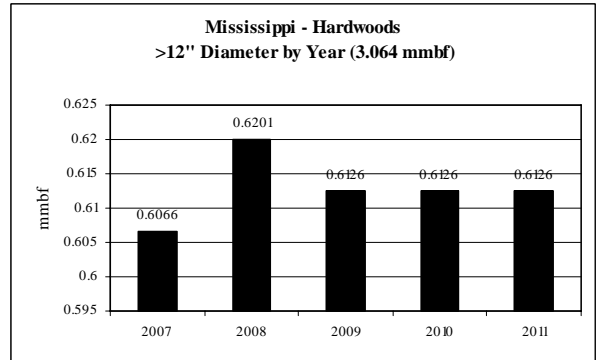
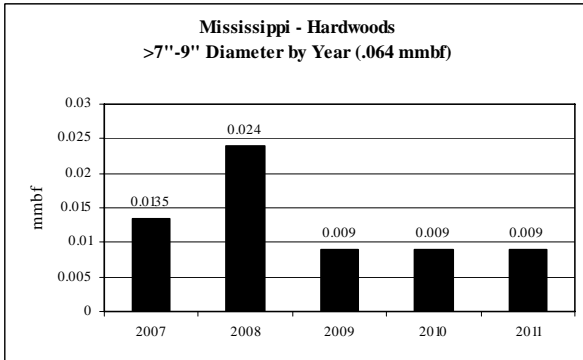
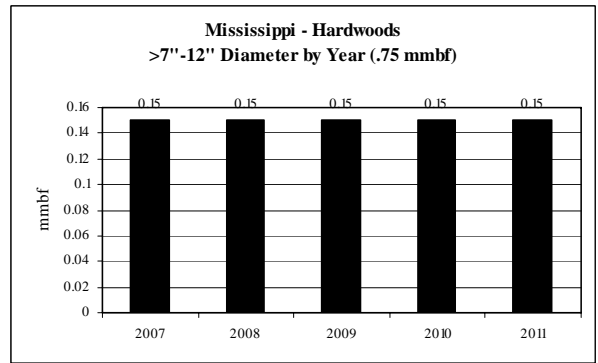
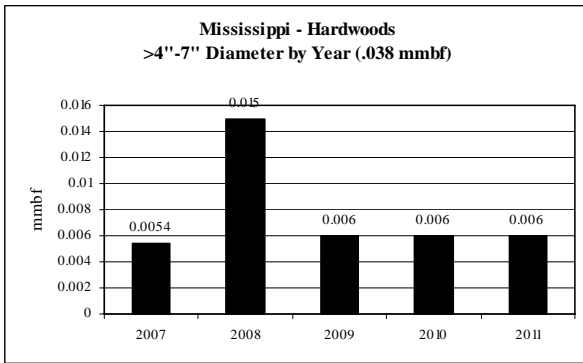


\*italics/bold = species offering in CROP



**Hardwoods: Diameter by Year**

**ROM # HWD 1.2**



Note: no <4" dbh

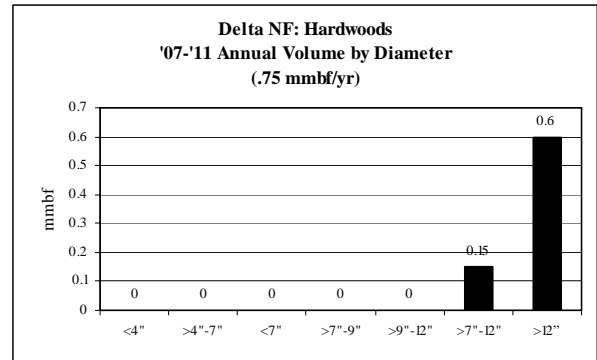
**Mississippi: Hardwoods CROP offering/removal '07 – '11  
(by agency)**

**ROM # HWD 1.3**

gT = green tons (up to 7" dbh)  
S = small log mmbf (>7"-12" dbh)  
L = large log mmbf (>12" dbh)

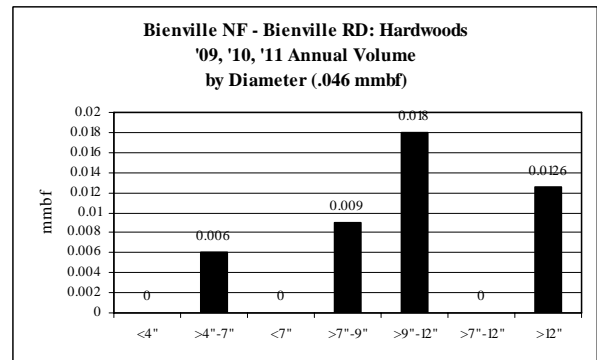
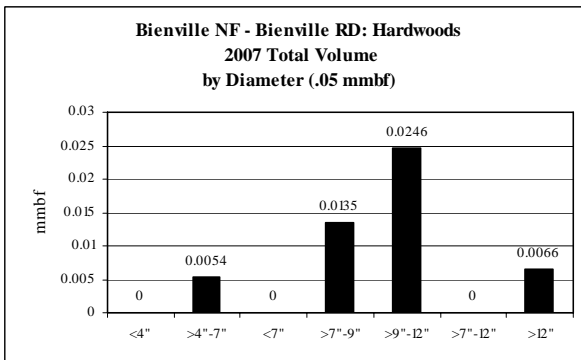
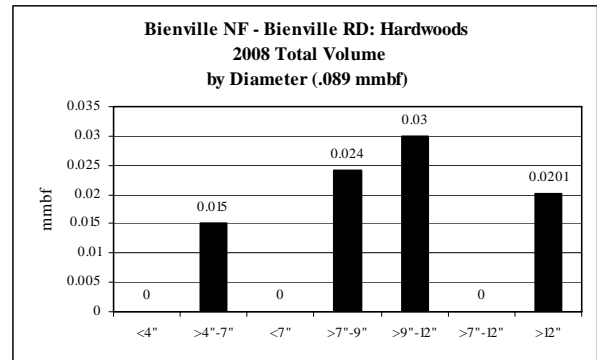
**A**

<b>Hardwoods Delta NF: Delta RD</b>	<b>5-yr = 3.75 mmbf; .75 mmbf/yr</b>
	<ul style="list-style-type: none"> <li>• <b>Level supply from year to year</b></li> </ul>
gT = 0	<ul style="list-style-type: none"> <li>• &lt;4" = 0% (0 mmbf)</li> <li>• &gt;4"-7" = 0% (0 mmbf)</li> <li>• &lt;7" = 0% (0 mmbf)</li> </ul>
S = .75	<ul style="list-style-type: none"> <li>• &gt;7"-9" = 0% (0 mmbf)</li> <li>• &gt;9"-12" = 0% (0 mmbf)</li> <li>• &gt;7"-12" = 20% (.75 mmbf)</li> </ul>
L = 3	<ul style="list-style-type: none"> <li>• &gt;12" = 80% (3 mmbf)</li> </ul>



**E**

<b>Hardwoods Bienville NF: Bienville RD</b>	<b>5-yr = .276 mmbf</b>
	<ul style="list-style-type: none"> <li>• <b>Fairly level supply from year to year</b></li> </ul>
gT = 192	<ul style="list-style-type: none"> <li>• &lt;4" = 0% (0 mmbf)</li> <li>• &gt;4"-7" = 14% (.038 mmbf)</li> <li>• &lt;7" = 0% (0 mmbf)</li> </ul>
S = .173	<ul style="list-style-type: none"> <li>• &gt;7"-9" = 23% (.064 mmbf)</li> <li>• &gt;9"-12" = 40% (.109 mmbf)</li> <li>• &gt;7"-12" = 0% (0 mmbf)</li> </ul>
L = .064	<ul style="list-style-type: none"> <li>• &gt;12" = 23% (.064 mmbf)</li> </ul>



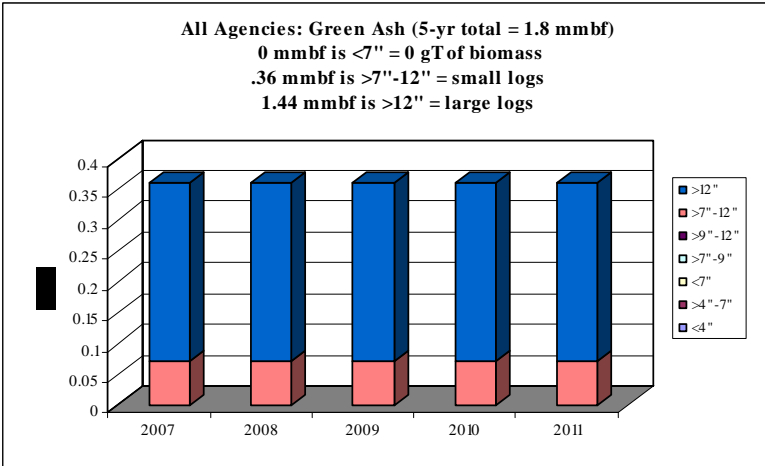
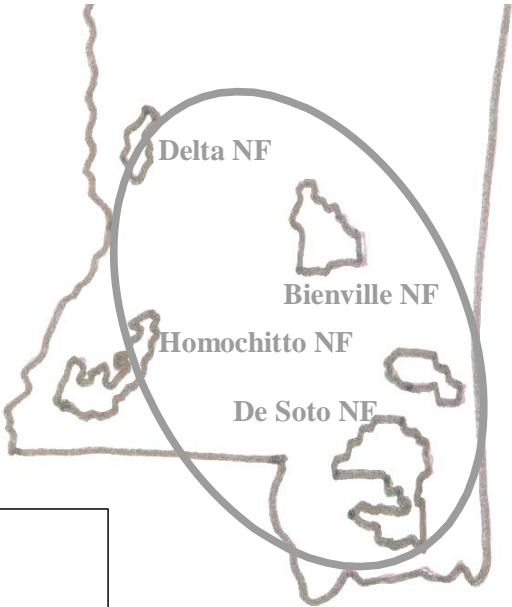
**Mississippi: Green Ash CROP offering/removal '07 – '11**  
**(gT = 0 / S = .36 mmbf / L = 1.44 mmbf)**

**ROM # GA 1**

gT = green tons (up to 7" dbh)  
 S = small log mmbf (>7"-12" dbh)  
 L = large log mmbf (>12" dbh)

GA= green ash

**Delta NF: 1 RD – 100%**  
**(gT = 0 / S = .36 / L = 1.44)**



	gT	mmbf	
	Biomass	Small Log	Large Log
2007	0	0.072	0.288
2008	0	0.072	0.288
2009	0	0.072	0.288
2010	0	0.072	0.288
2011	0	0.072	0.288
Totals	0	0.36	1.44
%	0%	20%	80%
mmbf	0		

**Mississippi: *Green Ash* CROP offering/removal '07 – '11**  
(gT = 0 / S = .36 mmbf / L = 1.44 mmbf)

ROM # GA 1.1

**Delta NF:**

A *Delta RD* \* (gT = 0 / S = .36 / L = 1.44)

**Homochitto NF:**

B Homochitto RD

**De Soto NF:**

C De Soto RD

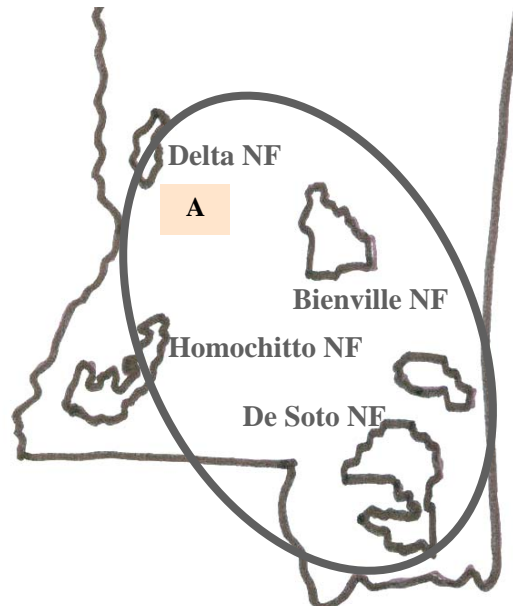
D Chickasawhay RD

**Bienville NF:**

E Bienville RD

**MS DWF & P:**

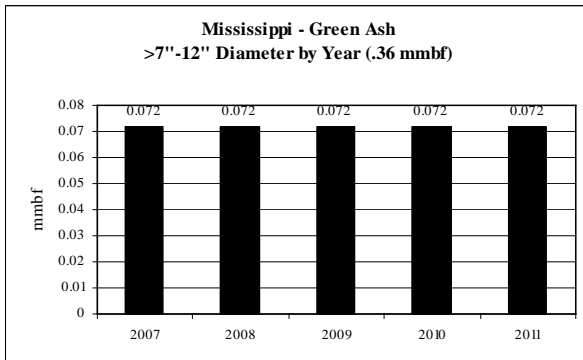
F MS DWF & P



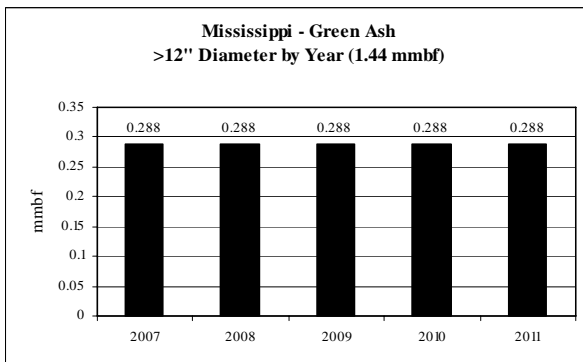
\*italics/bold = species offering in CROP

**Green Ash Diameter by Year**

**ROM # GA 1.2**



Note: no <4" or >4"-7" dbh



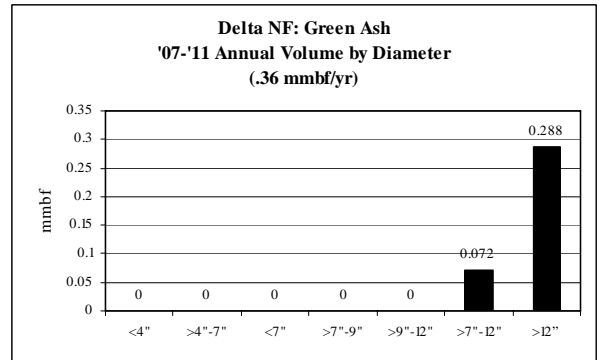
**Mississippi: Green Ash CROP offering/removal '07 – '11  
(by agency)**

**ROM # GA 1.3**

gT = green tons (up to 7" dbh)  
S = small log mmbf (>7"-12" dbh)  
L = large log mmbf (>12" dbh)

A

<b>Green Ash Delta NF: Delta RD</b>	<b>5-yr = 1.8 mmbf; .36 mmbf/yr</b>
	<ul style="list-style-type: none"> <li>• <b>Level supply from year to year</b></li> </ul>
gT = 0	<ul style="list-style-type: none"> <li>• &lt;4" = 0% (0 mmbf)</li> <li>• &gt;4"-7" = 0% (0 mmbf)</li> <li>• &lt;7" = 0% (0 mmbf)</li> </ul>
S = .36	<ul style="list-style-type: none"> <li>• &gt;7"-9" = 0% (0 mmbf)</li> <li>• &gt;9"-12" = 0% (0 mmbf)</li> <li>• &gt;7"-12" = 20% (.36 mmbf)</li> </ul>
L = 1.44	<ul style="list-style-type: none"> <li>• &gt;12" = 80% (1.44 mmbf)</li> </ul>



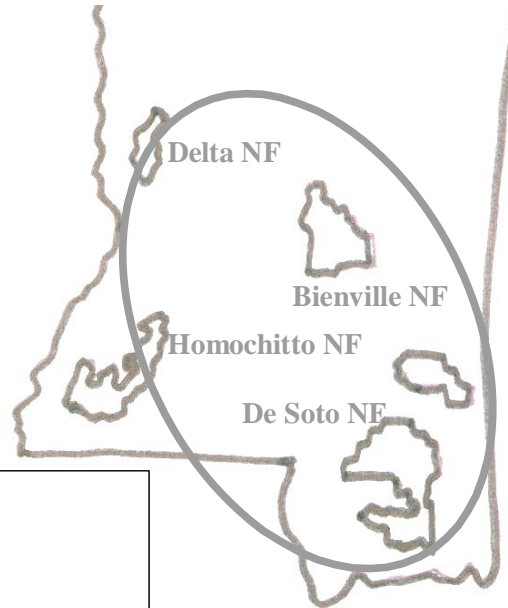
**Mississippi: Poplar CROP offering/removal '07 - '11**  
 (gT = 974 / S = 1.043 mmbf / L = .552 mmbf)

**ROM # Poplar 1**

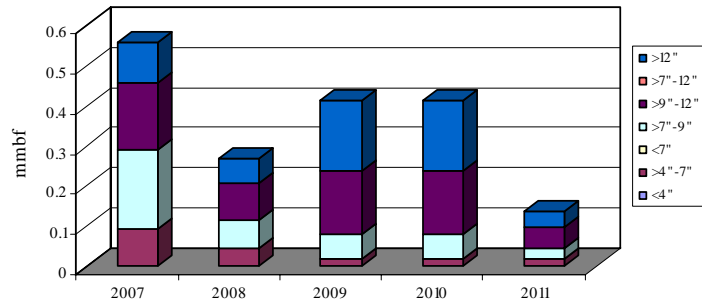
gT = green tons (up to 7" dbh)  
 S = small log mmbf (>7"-12" dbh)  
 L = large log mmbf (>12" dbh)

**Homochitto NF: 1 RD - 54%**  
 (gT = 398 / S = .524 / L = .359)

**Bienville NF: 1 RD - 46%**  
 (gT = 576 / S = .519 / L = .193)



**All Agencies: Poplar (5-yr total = 1.79 mmbf)**  
 .195 mmbf is <7" = 974 gT of biomass  
 1.043 mmbf is >7"-12" = small logs  
 .552 mmbf is >12" = large logs



	gT	mmbf	
	Biomass	Small Log	Large Log
2007	479	0.3608	0.1011
2008	225	0.162	0.0603
2009	90	0.2197	0.1765
2010	90	0.2197	0.1765
2011	90	0.081	0.0378
<b>Totals</b>	<b>974</b>	<b>1.0432</b>	<b>0.5522</b>
%	11%	58%	31%
mmbf	0.1948		

**1.7902**

**Mississippi: *Poplar* CROP offering/removal '07 - '11**  
(gT = 974 / S = 1.043 mmbf / L = .552 mmbf)

ROM # Poplar 1.1

*Poplar* = poplar

**Delta NF:**

A Delta RD

**Homochitto NF:**

**B** *Homochitto RD* \* (gT = 398 / S = .524 / L = .359)

**De Soto NF:**

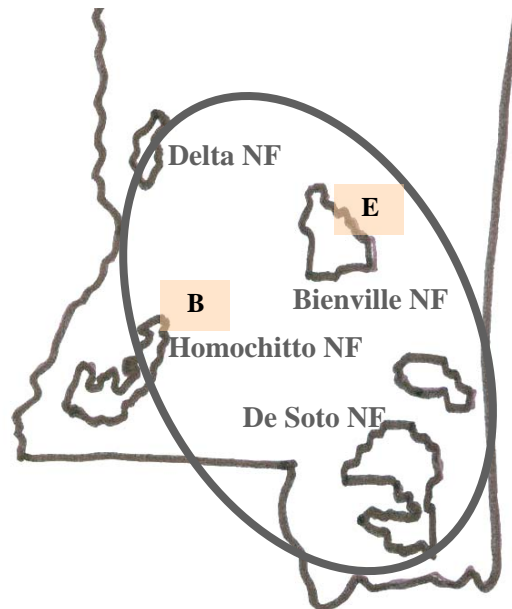
C De Soto RD  
D Chickasawhay RD

**Bienville NF:**

**E** *Bienville RD* (gT = 576 / S = .519 / L = .193)

**MS DWF & P:**

F MS DWF & P

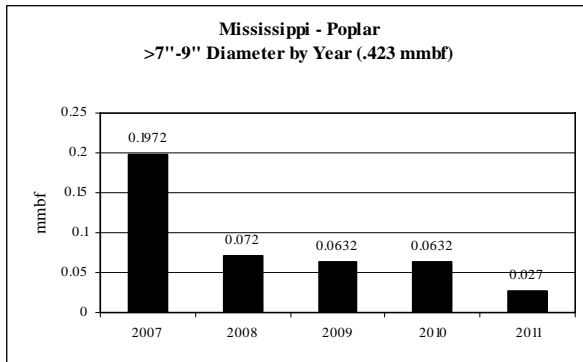
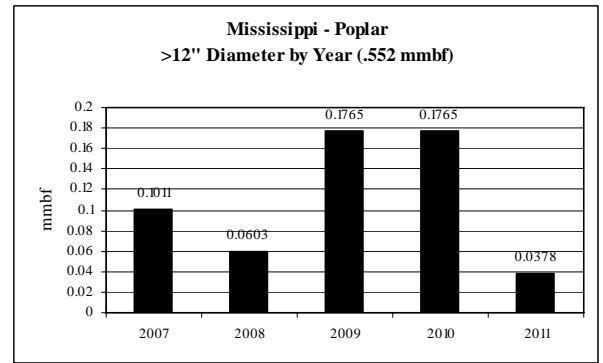
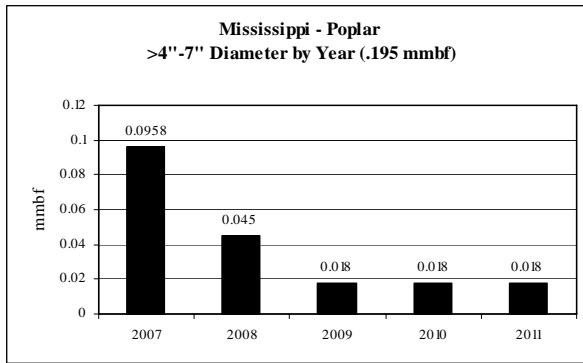


\*italics/bold = species offering in CROP

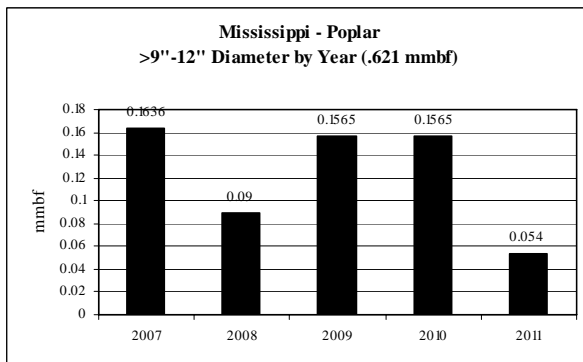


**Poplar: Diameter by Year**

**ROM # Poplar 1.2**



Note: <4" dbh



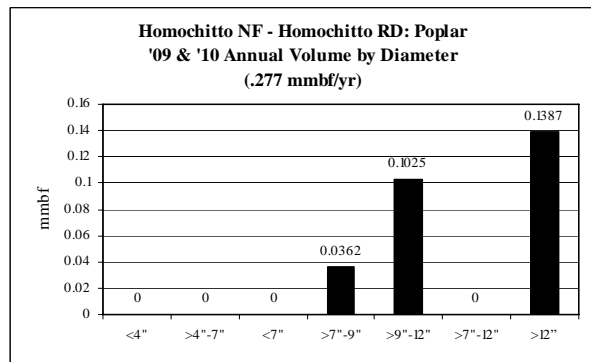
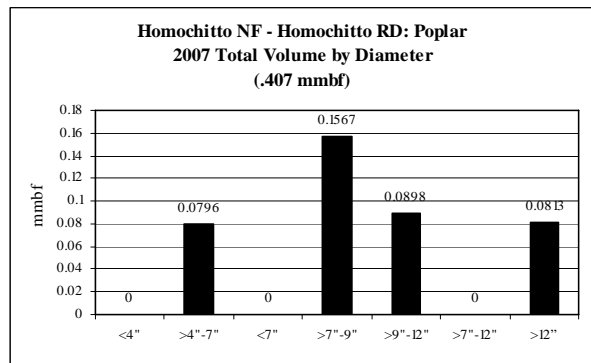
**Mississippi: Poplar CROP offering/removal '07 – '11  
(by agency)**

**ROM # Poplar 1.3**

gT = green tons (up to 7" dbh)  
S = small log mmbf (>7"-12" dbh)  
L = large log mmbf (>12" dbh)

**B**

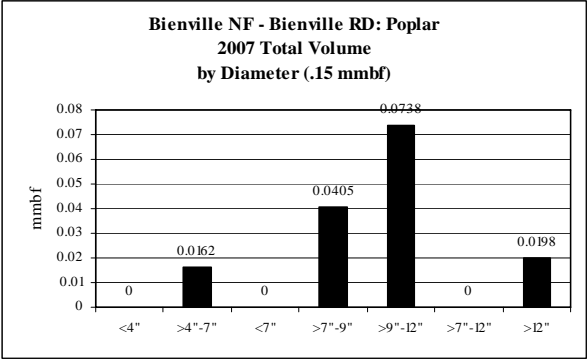
<b>Poplar Homochitto NF: Homochitto RD</b>	<b>5-yr = .962 mmbf</b>
	<ul style="list-style-type: none"> <li>• <b>No offering in '08 &amp; '11</b></li> </ul>
gT = 398	<ul style="list-style-type: none"> <li>• &lt;4" = 0% (0 mmbf)</li> <li>• &gt;4"-7" = 8% (.08 mmbf)</li> <li>• &lt;7" = 0% (0 mmbf)</li> </ul>
S = .524	<ul style="list-style-type: none"> <li>• &gt;7"-9" = 24% (.229 mmbf)</li> <li>• &gt;9"-12" = 31% (.295 mmbf)</li> <li>• &gt;7"-12" = 0% (0 mmbf)</li> </ul>
L = .359	<ul style="list-style-type: none"> <li>• &gt;12" = 37% (.359 mmbf)</li> </ul>



**Mississippi: Poplar CROP offering/removal '07 – '11  
(by agency)**

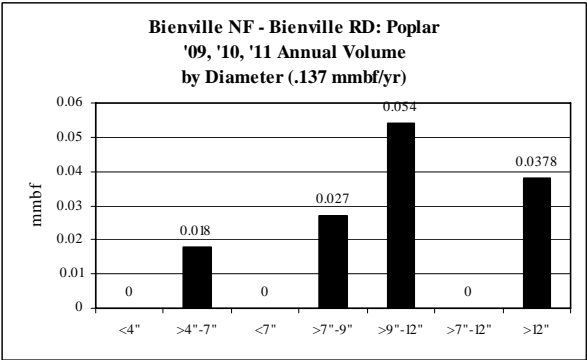
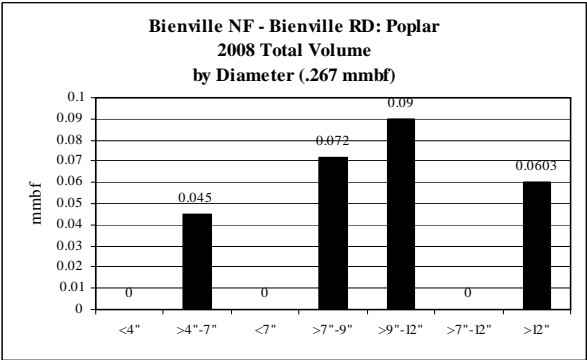
**ROM # Poplar 1.4**

gT = green tons (up to 7" dbh)  
S = small log mmbf (>7"-12" dbh)  
L = large log mmbf (>12" dbh)



**E**

<b>Poplar Bienville NF: Bienville RD</b>	<b>5-yr = .828 mmbf</b>
	<ul style="list-style-type: none"> <li>Fairly level supply from year to year</li> </ul>
gT = 576	<ul style="list-style-type: none"> <li>&lt;4" = 0% (0 mmbf)</li> <li>&gt;4"-7" = 14% (.115 mmbf)</li> <li>&lt;7" = 0% (0 mmbf)</li> </ul>
S = .519	<ul style="list-style-type: none"> <li>&gt;7"-9" = 23% (.193 mmbf)</li> <li>&gt;9"-12" = 40% (.326 mmbf)</li> <li>&gt;7"-12" = 0% (0 mmbf)</li> </ul>
L = .193	<ul style="list-style-type: none"> <li>&gt;12" = 23% (.193 mmbf)</li> </ul>



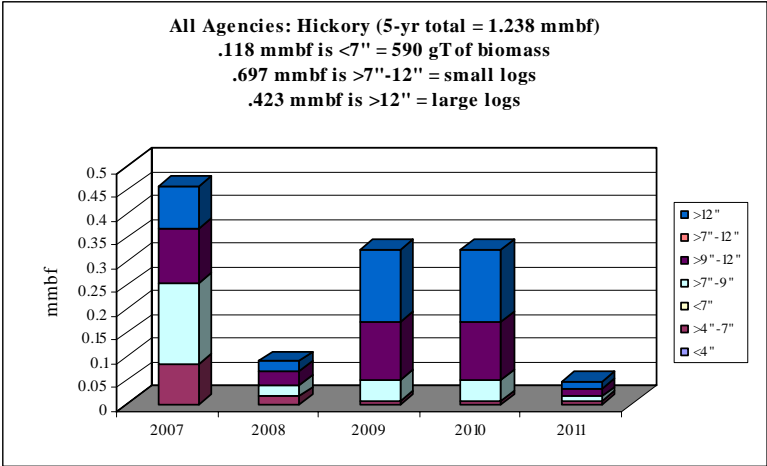
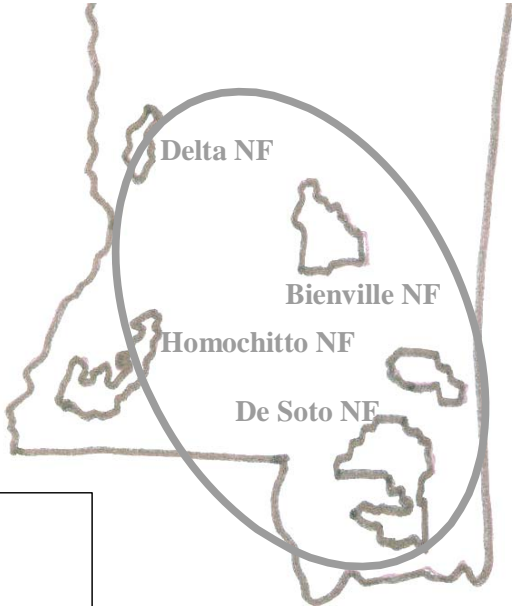
**Mississippi: Hickory CROP offering/removal '07 - '11**  
**(gT = 590 / S = .697 mmbf / L = .423 mmbf)**

**ROM # Hickory 1**

gT = green tons (up to 7" dbh)  
 S = small log mmbf (>7"-12" dbh)  
 L = large log mmbf (>12" dbh)

**Homochitto NF: 1 RD - 78%**  
**(gT = 398 / S = .524 / L = .359)**

**Bienville NF: 1 RD - 22%**  
**(gT = 192 / S = .173 / L = .064)**



	gT	mmbf	
	Biomass	Small Log	Large Log
2007	425	0.2846	0.0879
2008	75	0.054	0.0201
2009	30	0.1657	0.1513
2010	30	0.1657	0.1513
2011	30	0.027	0.0126
<b>Totals</b>	<b>590</b>	<b>0.697</b>	<b>0.4232</b>
<b>%</b>	<b>10%</b>	<b>56%</b>	<b>34%</b>
<b>mmbf</b>	<b>0.118</b>		

**1.2382**

**Mississippi: Hickory CROP offering/removal '07 – '11**  
(gT = 590 / S = .697 mmbf / L = .423 mmbf)

**ROM # Hickory 1.1**

*Hickory= hickory*

**Delta NF:**

A Delta RD

**Homochitto NF:**

***B Homochitto RD\**** (gT = 398 / S = .524 / L = .359)

**De Soto NF:**

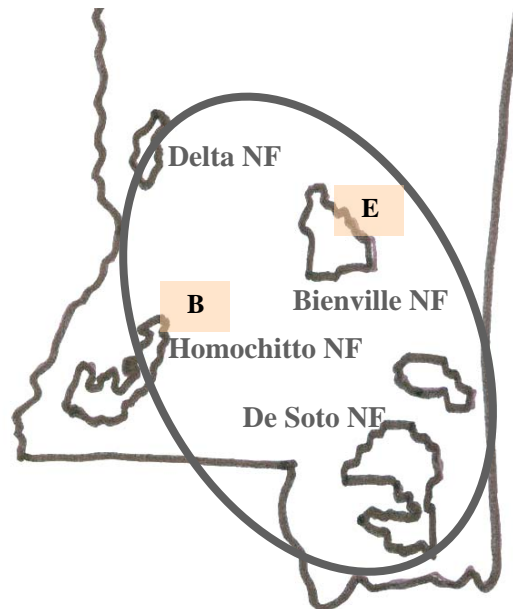
C De Soto RD  
D Chickasawhay RD

**Bienville NF:**

***E Bienville RD*** (gT = 192 / S = .173 / L = .064)

**MS DWF & P:**

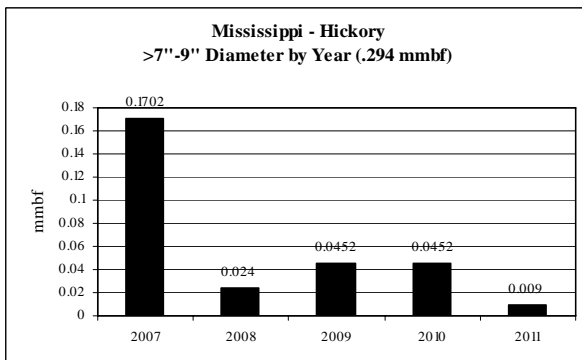
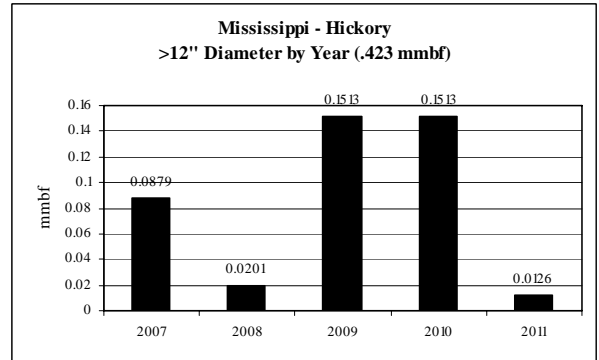
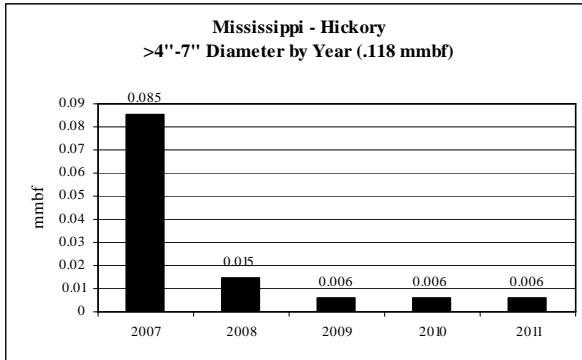
F MS DWF & P



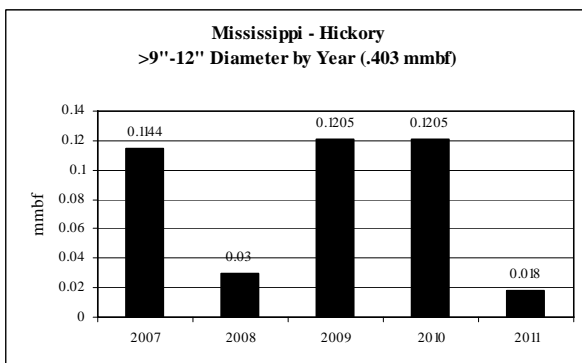
\*italics/bold = species offering in CROP

**Hickory: Diameter by Year**

**ROM # Hickory 1.2**



Note: no <4" dbh



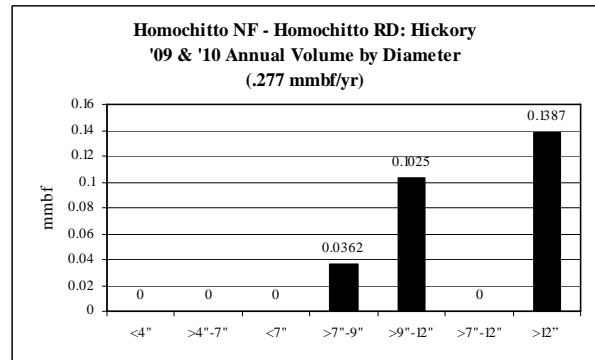
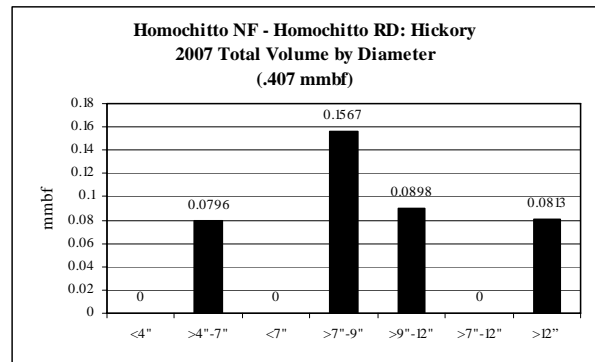
Mississippi: Hickory CROP offering/removal '07 – '11  
(by agency)

ROM # Hickory 1.3

gT = green tons (up to 7" dbh)  
S = small log mmbf (>7"-12" dbh)  
L = large log mmbf (>12" dbh)

**B**

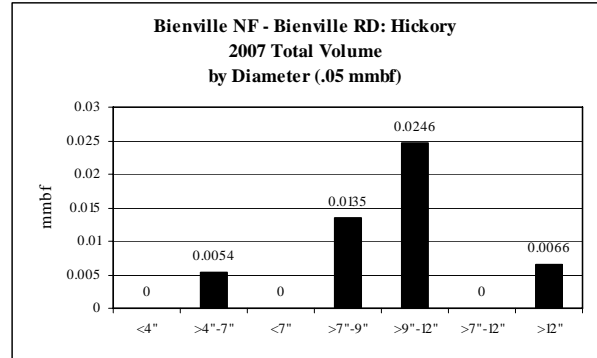
<b>Hickory Homochitto NF: Homochitto RD</b>	<b>5-yr = .962 mmbf</b>
	<ul style="list-style-type: none"> <li>• No offering in '08 &amp; '11</li> </ul>
gT = 398	<ul style="list-style-type: none"> <li>• &lt;4" = 0% (0 mmbf)</li> <li>• &gt;4"-7" = 8% (.08 mmbf)</li> <li>• &lt;7" = 0% (0 mmbf)</li> </ul>
S = .524	<ul style="list-style-type: none"> <li>• &gt;7"-9" = 24% (.229 mmbf)</li> <li>• &gt;9"-12" = 31% (.295 mmbf)</li> <li>• &gt;7"-12" = 0% (0 mmbf)</li> </ul>
L = .359	<ul style="list-style-type: none"> <li>• &gt;12" = 37% (.359 mmbf)</li> </ul>



Mississippi: Hickory CROP offering/removal '07 – '11  
(by agency)

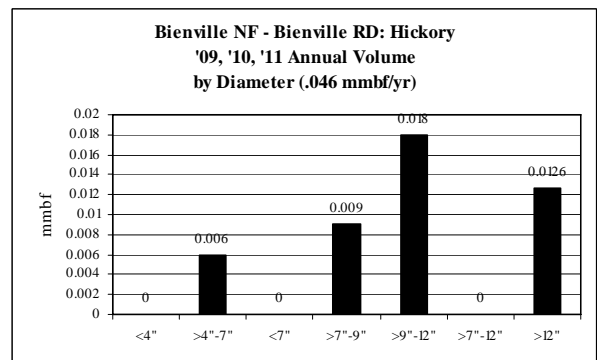
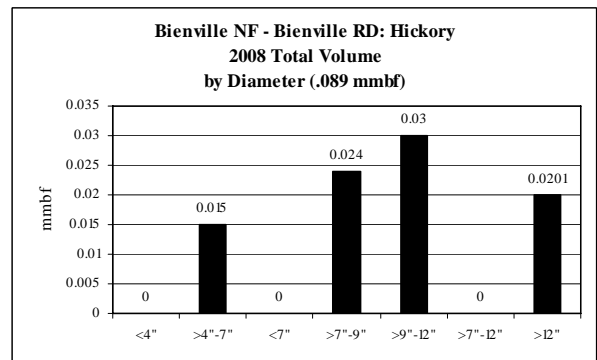
ROM # Hickory 1.4

gT = green tons (up to 7" dbh)  
S = small log mmbf (>7"-12" dbh)  
L = large log mmbf (>12" dbh)



E

<b>Hickory Bienville NF: Bienville RD</b>	<b>5-yr = .276 mmbf</b>
	<ul style="list-style-type: none"> <li>• Unlevel supply from year to year</li> </ul>
gT = 192	<ul style="list-style-type: none"> <li>• &lt;4" = 0% (0 mmbf)</li> <li>• &gt;4"-7" = 14% (.038 mmbf)</li> <li>• &lt;7" = 0% (0 mmbf)</li> </ul>
S = .173	<ul style="list-style-type: none"> <li>• &gt;7"-9" = 23% (.064 mmbf)</li> <li>• &gt;9"-12" = 40% (.109 mmbf)</li> <li>• &gt;7"-12" = 0% (0 mmbf)</li> </ul>
L = .064	<ul style="list-style-type: none"> <li>• &gt;12" = 23% (.064 mmbf)</li> </ul>





**Section B: Mississippi CROP**  
**16<sup>th</sup> Section Lands ROMs**  
**(*Annual* Resource Offering/Removal Maps)**  
*(average annual removal based on '01-'05 performance)\**

\*see special note on next page for data & assumptions used

**Section B: 16<sup>th</sup> Section Lands ROMS Assumptions**

As no projections are available for future removal off these dedicated lands, it was determined that only those counties (18 out of 43) with demonstrated annual timber removals during the last five years would be analyzed for CROP projections and included in this special 16<sup>th</sup> Section ROMS section. Data and assumptions used for these unique lands are as follows:

- c) There are 43 counties within the Mississippi CROP landscape that have 16<sup>th</sup> Section lands included in their boundaries. Between '01 and '05, over 99 mmbf of pine timber and 396,000 green tons of pine pulp were removed from these lands. During that same period of time, over 32 mmbf of hardwood timber and 114,000 green tons of hardwood pulp were removed. Of the 43 counties with 16<sup>th</sup> Section lands, only 18 counties experienced annual removals off these special lands: **Central region** counties where annual removal occurred include Clarke, Hinds, Jasper, Newton, Scott, Simpson, and Smith counties; **Southern region** counties include Amite, Copiah, Franklin, Jefferson Davis, Jones, Lincoln, Marion, Walthall, and Wayne counties; and **Delta/River region** counties include Jefferson and Warren counties. Collectively, these 18 counties provided over 60% and 51% of the pine and hardwood timber removed in the CROP landscape respectively, and provided over 56% and 62% of the pine and hardwood pulp removed in the CROP landscape respectively.
- d) For the Central Region, 7 of the 14 counties included in this region harvested annual volumes of timber off 16<sup>th</sup> Section lands. These 7 counties produced 58% of the total 5-year **pine** volume, 30% of the total 5-year **hardwood**, and 63% of the total 5-year **pulpwood** volume harvested off all 16<sup>th</sup> Section lands in this region.
- e) For the Southern Region, 9 of the 22 counties included in this region harvested annual volumes of timber off 16<sup>th</sup> Section lands. These 9 counties produced 65% of the total 5-year **pine** volume, 35% of the total 5-year **hardwood**, and 63% of the total 5-year **pulpwood** volume harvested off all 16<sup>th</sup> Section lands in this region.
- f) For the Delta/River Region, 2 of the 7 counties included in this region harvested annual volumes of timber off 16<sup>th</sup> Section lands. The 2 counties produced 31% of the total 5-year **pine** volume, 73% of the total 5-year **hardwood**, and 48% of the total 5-year **pulpwood** volume harvested off all 16<sup>th</sup> Section lands in this region.

Protocol for determining projected volumes for these targeted counties from '07-'11 was as follows:

1. Historical 16<sup>th</sup> Section harvest data was received from the Mississippi Institute for Forest Inventory (MIFI); Mississippi Forestry Commission. Diameter breakouts provided by MIFI to be used in the CROP evaluation were as follows:

	<7"	>7"- 12"	>12"
<b>Pine</b>	9.7%	41.7%	48.6%
<b>Hardwoods</b>	10.6%	33.4%	56%

As with all ROM data, the <7" volume was converted to gT for biomass designation; the >7"-12" was classified as **small log** volume; and the >12" was classified as **large log** volume.

2. While harvest variations for the 18 counties analyzed for this CROP evaluation did occur from year to year, for this project the five-year removals for 16<sup>th</sup> Section lands were averaged to give an estimated annual removal for the next five years – assuming historical patterns might reflect actual future removal practices.

**Section B: Mississippi CROP  
16<sup>th</sup> Section Lands ROMs**

*Table of Contents*

	<i>Page</i>
<b>Mississippi All Regions Data</b> .....	59
All Regions Location Map.....	60
ROMs by Species.....	61
a) <b><u>Pine Overview</u></b> .....	62-63
1. <i>Central Region Map:</i> .....	64
• County breakout data.....	65
2. <i>South Region Map:</i> .....	66
• County breakout data.....	67
3. <i>Delta/River Region Map:</i> .....	68
• County breakout data.....	69
b) <b><u>Hardwood Overview</u></b> .....	70-71
1. <i>Central Region Map:</i> .....	72
• County breakout data.....	73
2. <i>South Region Map:</i> .....	74
• County breakout data.....	75
3. <i>Delta/River Region Map:</i> .....	76
• County breakout data.....	77

**Mississippi-16<sup>th</sup> Section Lands: All Regions in CROP Landscape  
 averaged annual offering/removal (based on '01-'05 performance)\*  
 (gT = 71,113 / S = 6.159 mmbf / L = 7.746 mmbf)**

\*only those counties with 16<sup>th</sup> Section  
 timber removal each year between '01 - '05  
 (18 out of 43).

gT = green tons (up to 7" dbh)  
 S = small log mmbf (>7"-12" dbh)  
 L = large log mmbf (>12" dbh)

**Delta/River Region: 2 of 7 counties - 10%**  
 (gT = 3,581 / S = .809 / L = 1.325)

**Central Region: 7 of 14 counties - 40%**  
 (gT = 31,621 / S = 2.185 / L = 2.651)

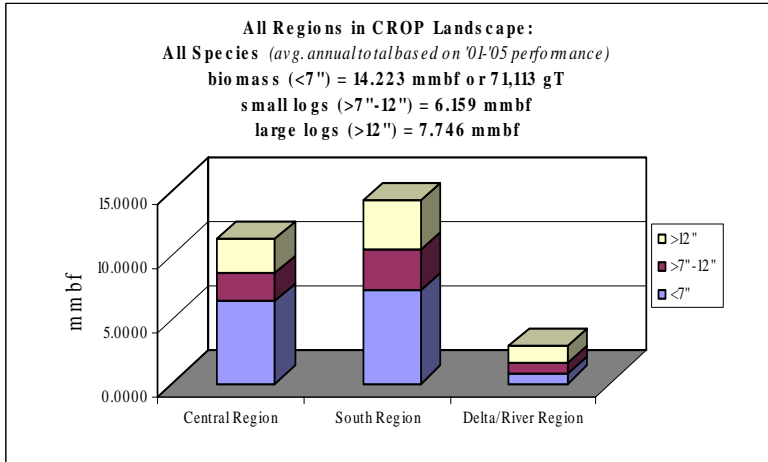


Delta/River Region

Central Region

South Region

**South Region: 9 of 22 counties - 50%**  
 (gT = 35,910 / S = 3.164 / L = 3.77)



**Mississippi-16<sup>th</sup> Section Lands: All Regions in CROP Landscape  
 averaged annual offering/removal (based on '01-'05 performance)\*  
 (gT = 71,113 / S = 6.159 mmbf / L = 7.746 mmbf)**

\*only those counties with 16<sup>th</sup> Section  
 timber removal each year between '01 – '05  
 (18 out of 43).

**A**

**Central Region:** (7 of 14 counties in CROP landscape)

*Central Region Counties (gT = 31,621; S = 2.18 mmbf; L = 2.651 mmbf)*

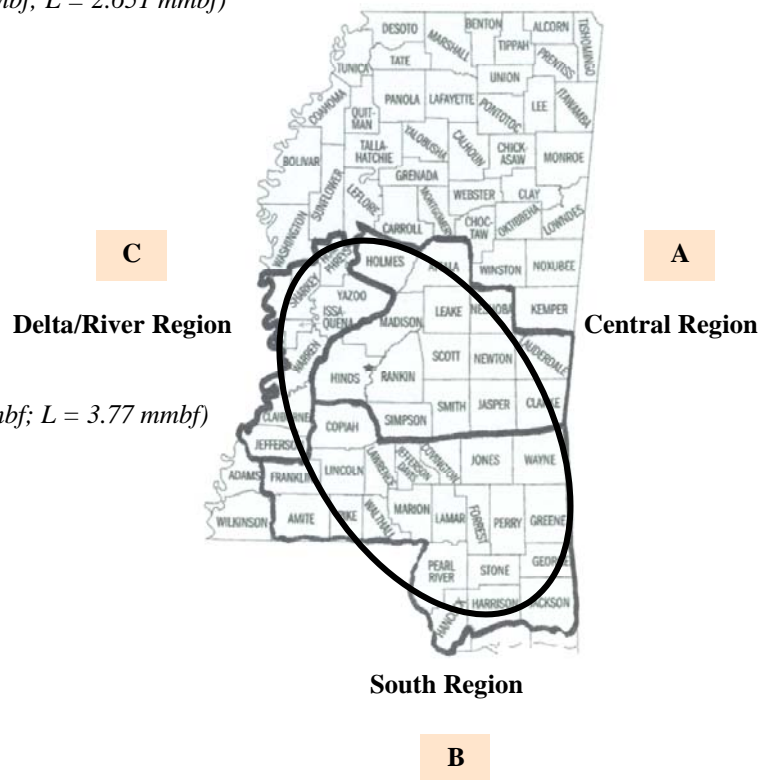
- Clarke
- Hinds
- Jasper
- Newton
- Scott
- Simpson
- Smith

**B**

**South Region:** (9 of 22 counties in CROP landscape)

*South Region Counties (gT = 35,910; S = 3.165 mmbf; L = 3.77 mmbf)*

- Amite
- Copiah
- Franklin
- Jefferson Davis
- Jones
- Lincoln
- Marion
- Walthall
- Wayne



**C**

**Delta/River Region:** (2 of 7 counties in CROP landscape)

*Delta/River Region Counties (gT = 3,581; S = .809 mmbf; L = 1.325 mmbf)*

- Jefferson
- Warren

## **ROMs by Specie Types**

(Averaged Annual Resource Offering/Removal Maps)

for 16<sup>th</sup> Section Lands

*(based on annual removal performance from '01 thru '05)*

**Mississippi-16<sup>th</sup> Section Lands: Pine All Regions in CROP Landscape  
 average annual offering/removal (based on '01-'05 performance)\*  
 (gT = 56,435 / S = 5.046 mmbf / L = 5.881 mmbf)**

\*only those counties with 16<sup>th</sup> Section  
 timber removal each year between '01 - '05  
 (18 out of 43).

gT = green tons (up to 7" dbh)  
 S = small log mmbf (>7"-12" dbh)  
 L = large log mmbf (>12" dbh)

**Delta/River Region: 2 of 7 counties - 1%  
 (gT = 243 / S = .0622 / L = .0725)**

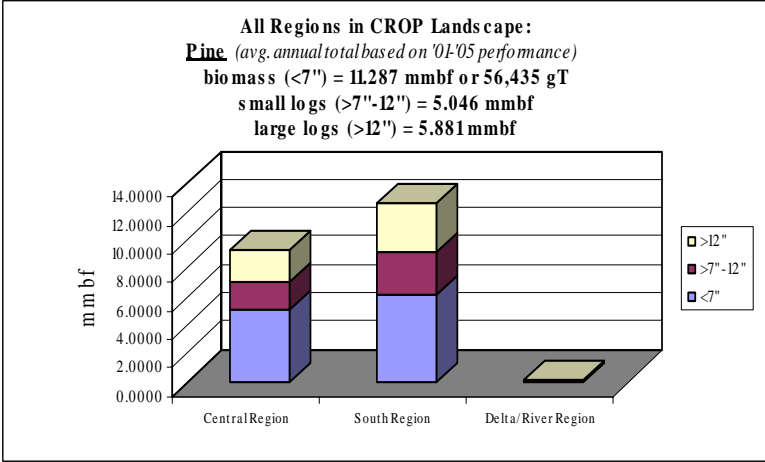
**Central Region: 7 of 14 counties - 42%  
 (gT = 25,361 / S = 1.98 / L = 2.308)**



Delta/River Region

Central Region

South Region



**South Region: 9 of 22 counties - 57%  
 (gT = 30,831 / S = 3.004 / L = 3.501)**

**Mississippi-16<sup>th</sup> Section Lands: Pine All Regions in CROP Landscape  
 averaged annual offering/removal (based on '01-'05 performance)\*  
 (gT = 56,435 / S = 5.046 mmbf / L = 5.881 mmbf)**

\*only those counties with 16<sup>th</sup> Section  
 timber removal each year between '01 – '05  
 (18 out of 43).

**A**

**Central Region:** (7 of 14 counties in CROP landscape)

*Central Region Counties (gT = 25,361; S = 1.98 mmbf; L = 2.3 mmbf)*

- Clarke
- Hinds
- Jasper
- Newton
- Scott
- Simpson
- Smith

**B**

**South Region:** (9 of 22 counties in CROP landscape)

*South Region Counties (gT = 30,830; S = 3.0 mmbf; L = 3.5 mmbf)*

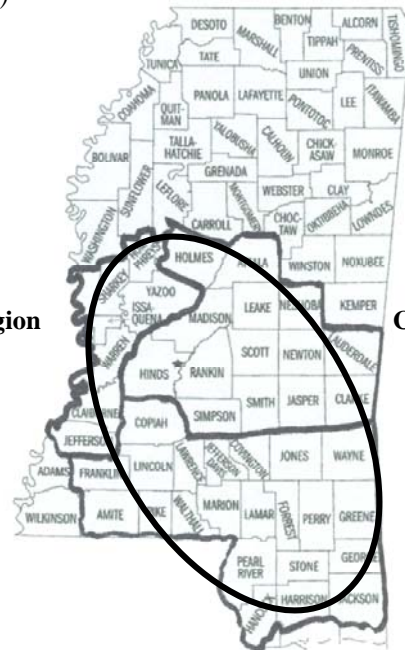
- Amite
- Copiah
- Franklin
- Jefferson Davis
- Jones
- Lincoln
- Marion
- Walthall
- Wayne

**C**

**Delta/River Region:** (2 of 7 counties in CROP landscape)

*Delta/River Region Counties (gT = 243; S = .062 mmbf; L = .072 mmbf)*

- Jefferson
- Warren





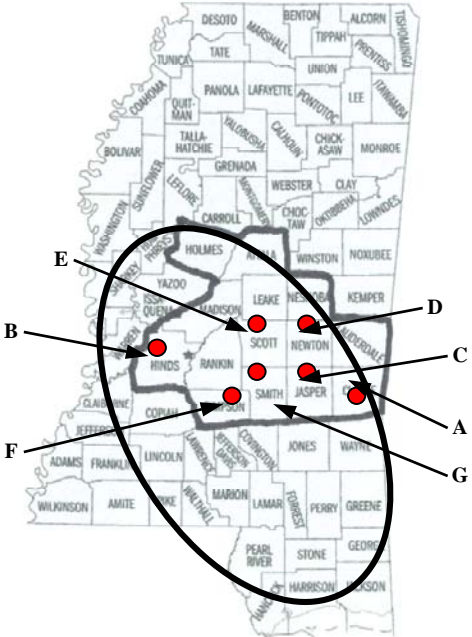
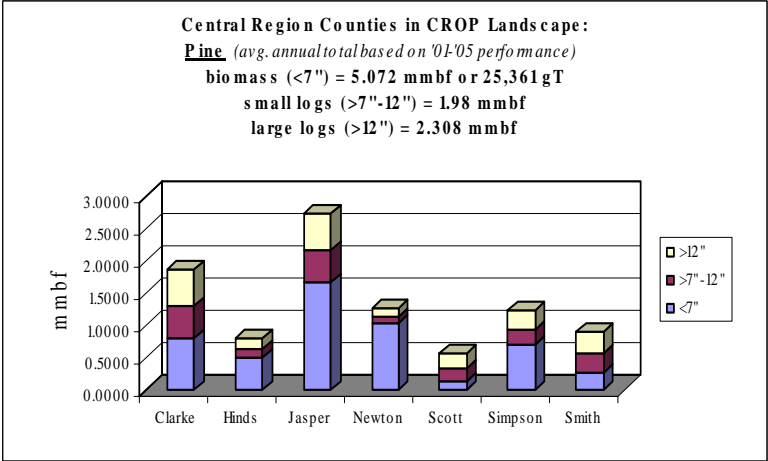
**Mississippi Central Region: Pine CROP offering/removal**  
*(averaged annual total removal based on '01-'05 performance)\**  
**(gT = 25,361 / S = 1.98 mmbf / L = 2.308 mmbf)**

**ROM # 16th Pine 1**

\*only those counties with 16<sup>th</sup> Section  
 timber removal each year between '01 – '05  
 (18 out of 43).

gT = green tons (up to 7" dbh)  
 S = small log mmbf (>7"-12" dbh)  
 L = large log mmbf (>12" dbh)

*Central Region in CROP Landscape*  
 ● (7 of 14 counties with annual removals)



A = Clarke  
 B = Hinds  
 C = Jasper  
 D = Newton  
 E = Scott  
 F = Simpson  
 G = Smith

**Mississippi Central Region: Pine CROP offering/removal**  
 (averaged annual total removal based on '01-'05 performance)\*  
 (gT = 25,361 / S = 1.98 mmbf / L = 2.308 mmbf)

**ROM # 16<sup>th</sup> Pine 1.1**

\*only those counties with 16<sup>th</sup> Section  
 timber removal each year between '01 – '05  
 (18 out of 43).

<i>Central Region: Pine</i>	<i>Biomass</i>		<i>Small Log</i>		<i>Large Log</i>	
	<i>gT</i>	<i>%</i>	<i>mmbf</i>	<i>%</i>	<i>mmbf</i>	<i>%</i>
<b>Clarke</b>	4,037.87	16%	.4914	25%	.5727	25%
<b>Hinds</b>	2,513.54	10%	.1371	7%	.1598	7%
<b>Jasper</b>	8,254.59	32%	.5017	25%	.5847	25%
<b>Newton</b>	5,125.74	20%	.1119	6%	.1304	6%
<b>Scott</b>	615.35	2%	.2014	10%	.2347	10%
<b>Simpson</b>	3,478.46	14%	.2421	12%	.2821	12%
<b>Smith</b>	1,335.68	5%	.2948	15%	.3436	15%
<b>Total</b>	<b>25,361.23</b>		<b>1.98</b>		<b>2.308</b>	

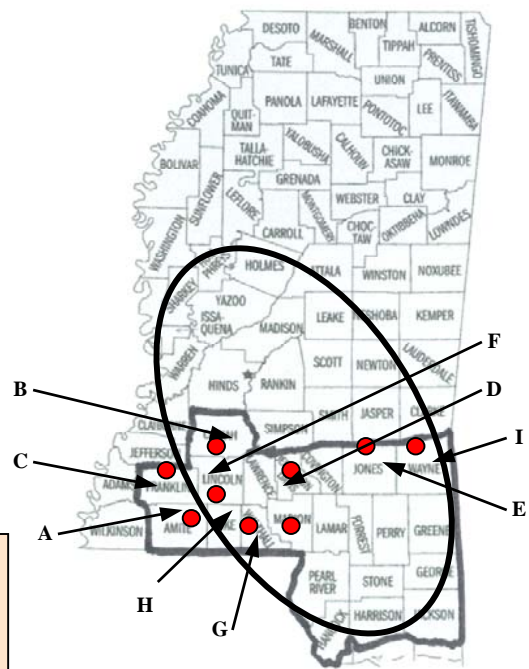
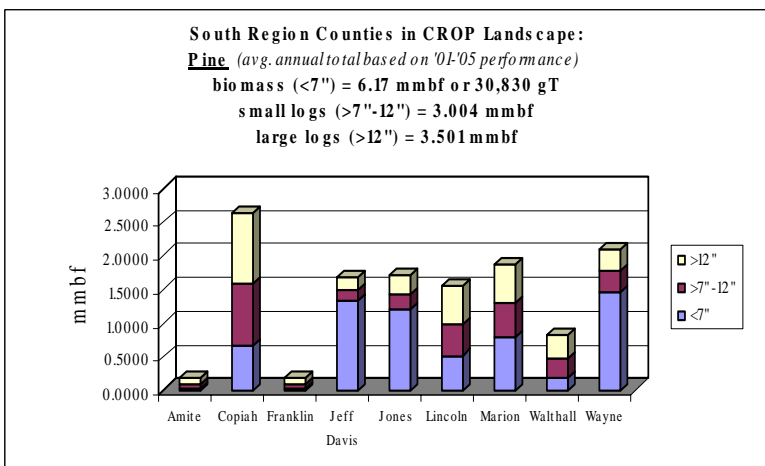
**Mississippi South Region: Pine CROP offering/removal**  
*(averaged annual total removal based on '01-'05 performance)\**  
**(gT = 30,831 / S = 3.004 mmbf / L = 3.501 mmbf)**

**ROM # 16<sup>th</sup> Pine 1**

gT = green tons (up to 7" dbh)  
 S = small log mmbf (>7"-12" dbh)  
 L = large log mmbf (>12" dbh)

\*only those counties with 16<sup>th</sup> Section  
 timber removal each year between '01 – '05  
 (18 out of 43).

South Region in CROP Landscape  
 ● (9 of 22 counties with annual removals)



A = Amite  
 B = Copiah  
 C = Franklin  
 D = Jefferson Davis  
 E = Jones  
 F = Lincoln  
 G = Marion  
 H = Walthall  
 I = Wayne

**Mississippi South Region: Pine CROP offering/removal**  
*(averaged annual total removal based on '01-'05 performance)\**  
**(gT = 30,831 / S = 3.004 mmbf / L = 3.501 mmbf)**

**ROM # 16<sup>th</sup> Pine 1.1**

\*only those counties with 16<sup>th</sup> Section  
 timber removal each year between '01 – '05  
 (18 out of 43).

<i>South Region: Pine</i>	<i>Biomass</i>		<i>Small Log</i>		<i>Large Log</i>	
	<i>gT</i>	<i>%</i>	<i>mmbf</i>	<i>%</i>	<i>mmbf</i>	<i>%</i>
<b>Amite</b>	119.93	<1%	.0657	2%	.0765	2%
<b>Copiah</b>	3304.18	11%	.9135	30%	1.064	30%
<b>Franklin</b>	127.78	<1%	.0648	2%	.0755	2%
<b>Jefferson Davis</b>	6587.67	21%	.1635	5%	.1905	5%
<b>Jones</b>	5924.23	19%	.2404	8%	.2802	8%
<b>Lincoln</b>	2562.43	8%	.4756	16%	.5543	16%
<b>Marion</b>	3968.49	13%	.4988	17%	.5814	17%
<b>Walthall</b>	912.19	3%	.2867	9%	.3341	9%
<b>Wayne</b>	7323.83	24%	.2946	10%	.3434	10%
<b>Total</b>	<b>30,830.77</b>		<b>3.0036</b>		<b>3.5006</b>	

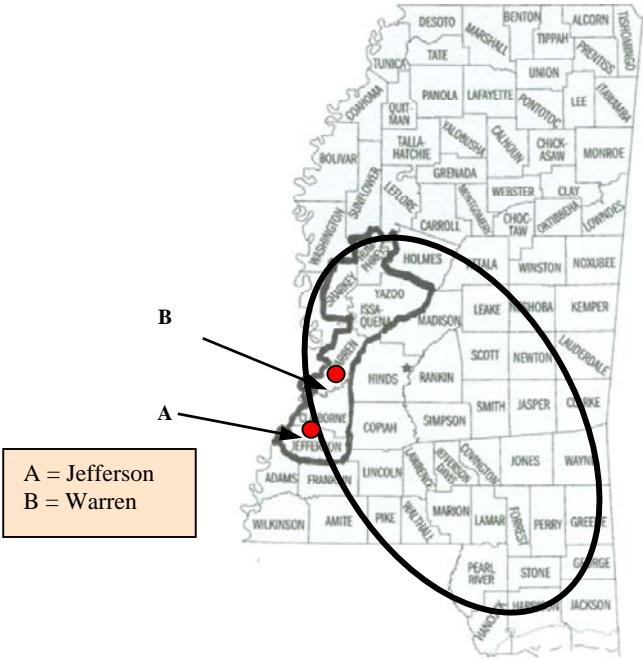
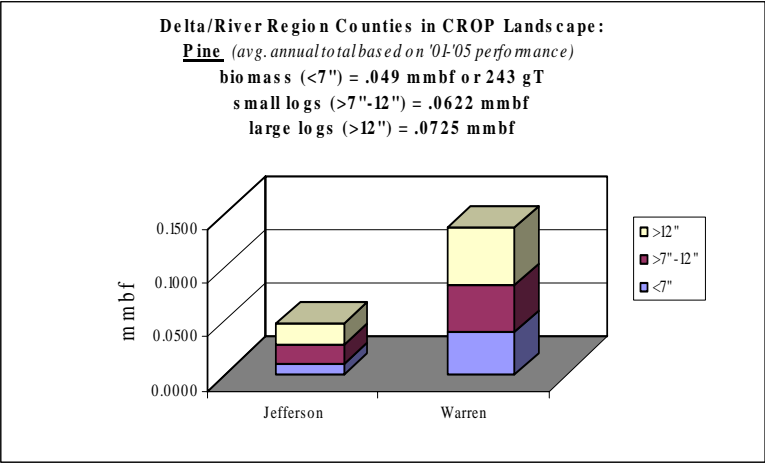
**Mississippi Delta/River Region: Pine CROP offering/removal**  
*(averaged annual total removal based on '01-'05 performance)\**  
**(gT = 243 / S = .0622 mmbf / L = .0725 mmbf)**

**ROM # 16<sup>th</sup> Pine 1**

gT = green tons (up to 7" dbh)  
 S = small log mmbf (>7"-12" dbh)  
 L = large log mmbf (>12" dbh)

\*only those counties with 16<sup>th</sup> Section  
 timber removal each year between '01 – '05  
 (18 out of 43).

*Delta/River Region in CROP Landscape*  
 ● (2 of 7 counties with annual removals)



**Mississippi Delta/River Region: Pine CROP offering/removal**  
*(averaged annual total removal based on '01-'05 performance)\**  
**(gT = 243 / S = .0622 mmbf / L = .0725 mmbf)**

**ROM # 16<sup>th</sup> Pine 1.1**

\*only those counties with 16<sup>th</sup> Section  
 timber removal each year between '01 – '05  
 (18 out of 43).

<i>Delta/River Region: Pine</i>	<i>Biomass</i>		<i>Small Log</i>		<i>Large Log</i>	
	<i>gT</i>	<i>%</i>	<i>mmbf</i>	<i>%</i>	<i>mmbf</i>	<i>%</i>
<b>Jefferson</b>	47.13	16%	.0177	28%	.0207	28%
<b>Warren</b>	195.83	10%	.0444	71%	.0518	71%
<b>Total</b>	<b>242.97</b>		<b>.0622</b>		<b>.0725</b>	

**Mississippi-16<sup>th</sup> Section Lands: Hardwood All Regions in CROP Landscape  
averaged annual offering/removal (based on '01-'05 performance)\*  
(gT = 14,678 / S = 1.112 mmbf / L = 1.865 mmbf)**

\*only those counties with 16<sup>th</sup> Section timber removal each year between '01 - '05 (18 out of 43).

gT = green tons (up to 7" dbh)  
S = small log mmbf (>7"-12" dbh)  
L = large log mmbf (>12" dbh)

**Delta/River Region: 2 of 7 counties - 45%**  
(gT = 3,338 / S = .747 / L = 1.253)

**Central Region: 7 of 14 counties - 30%**  
(gT = 6,260 / S = .2043 / L = .3426)

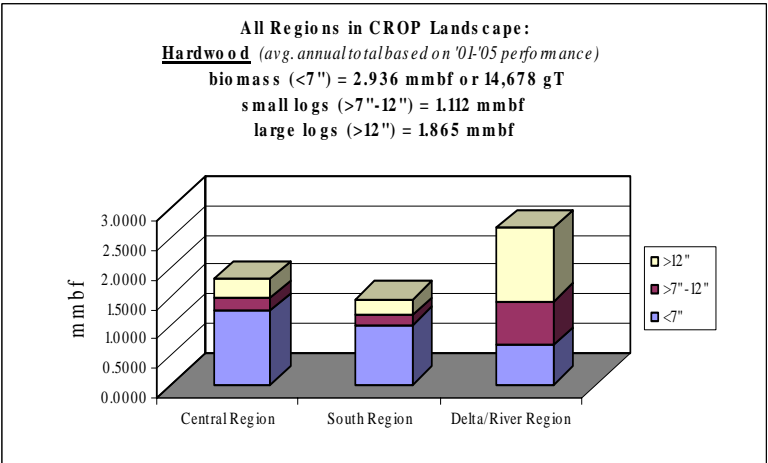


Delta/River Region

Central Region

South Region

**South Region: 9 of 22 counties - 24%**  
(gT = 5,079 / S = .161 / L = .2699)



**Mississippi-16<sup>th</sup> Section Lands: Hardwood All Regions in CROP Landscape  
averaged annual offering/removal (based on '01-'05 performance)\*  
(gT = 14,678 / S = 1.112 mmbf / L = 1.865 mmbf)**

\*only those counties with 16<sup>th</sup> Section  
timber removal each year between '01 - '05  
(18 out of 43).

**A**

**Central Region:** (7 of 14 counties in CROP landscape)

*Central Region Counties (gT = 6,260; S = .2043 mmbf; L = .3426 mmbf)*

- Clarke
- Hinds
- Jasper
- Newton
- Scott
- Simpson
- Smith

**B**

**South Region:** (9 of 22 counties in CROP landscape)

*South Region Counties (gT = 5,079; S = .161 mmbf; L = .2699 mmbf)*

- Amite
- Copiah
- Franklin
- Jefferson Davis
- Jones
- Lincoln
- Marion
- Walthall
- Wayne

**C**

**Delta/River Region**

**A**

**Central Region**



**South Region**

**B**

**C**

**Delta/River Region:** (2 of 7 counties in CROP landscape)

*Delta/River Region Counties (gT = 3,338; S = .747 mmbf; L = 1.253 mmbf)*

- Jefferson
- Warren



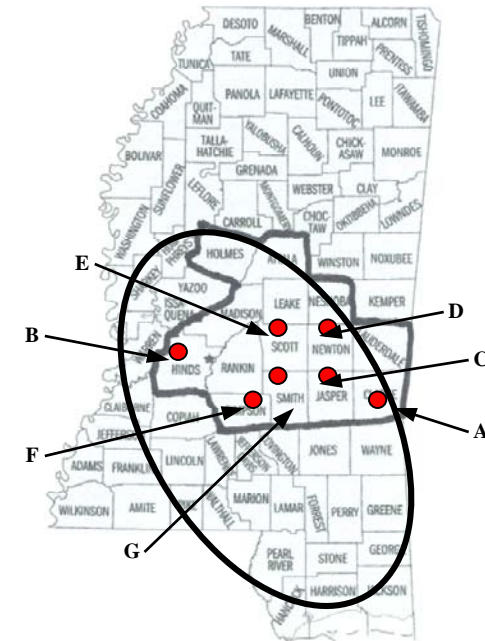
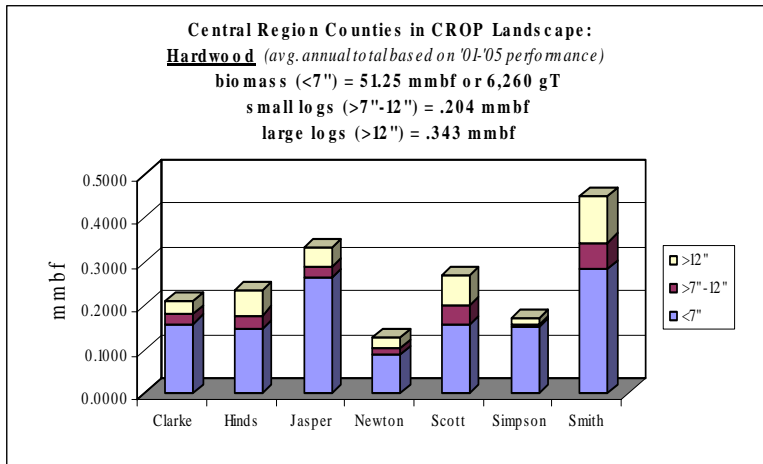
**Mississippi Central Region: Hardwood CROP offering/removal**  
*(averaged annual total removal based on '01-'05 performance)\**  
**(gT = 6,260 / S = .2043 mmbf / L = .3426 mmbf)**

**ROM # 16<sup>th</sup> HWD 1**

gT = green tons (up to 7" dbh)  
 S = small log mmbf (>7"-12" dbh)  
 L = large log mmbf (>12" dbh)

\*only those counties with 16<sup>th</sup> Section  
 timber removal each year between '01 - '05  
 (18 out of 43).

*Central Region in CROP Landscape*  
 ● (7 of 14 counties with annual removals)



A = Clarke  
 B = Hinds  
 C = Jasper  
 D = Newton  
 E = Scott  
 F = Simpson  
 G = Smith

**Mississippi Central Region: Hardwood CROP offering/removal**  
 (averaged annual total removal based on '01-'05 performance)\*  
 (gT = 6,260 / S = .2043 mmbf / L = .3426 mmbf)

**ROM # 16<sup>th</sup> HWD 1.1**

\*only those counties with 16<sup>th</sup> Section  
 timber removal each year between '01 – '05  
 (18 out of 43).

<i>Central Region: Hardwoods</i>	<i>Biomass</i>		<i>Small Log</i>		<i>Large Log</i>	
	<i>gT</i>	<i>%</i>	<i>mmbf</i>	<i>%</i>	<i>mmbf</i>	<i>%</i>
<b>Clarke</b>	799.66	13%	.0198	10%	.0332	10%
<b>Hinds</b>	734.16	12%	.0325	16%	.0545	16%
<b>Jasper</b>	1327.52	21%	.0248	12%	.0416	12%
<b>Newton</b>	442.74	7%	.0148	7%	.0248	7%
<b>Scott</b>	783.72	12%	.0428	21%	.0718	21%
<b>Simpson</b>	758.46	12%	.0075	4%	.0126	4%
<b>Smith</b>	1413.94	22%	.0621	30%	.1041	30%
<b>Total</b>	<b>6260.2</b>		<b>.2043</b>		<b>.3426</b>	

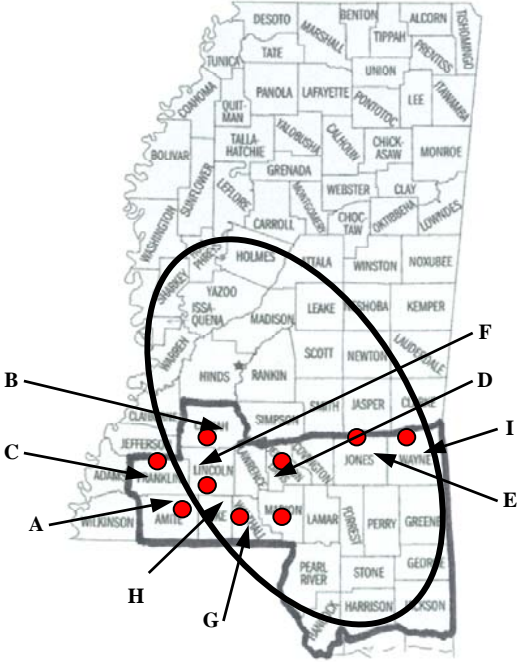
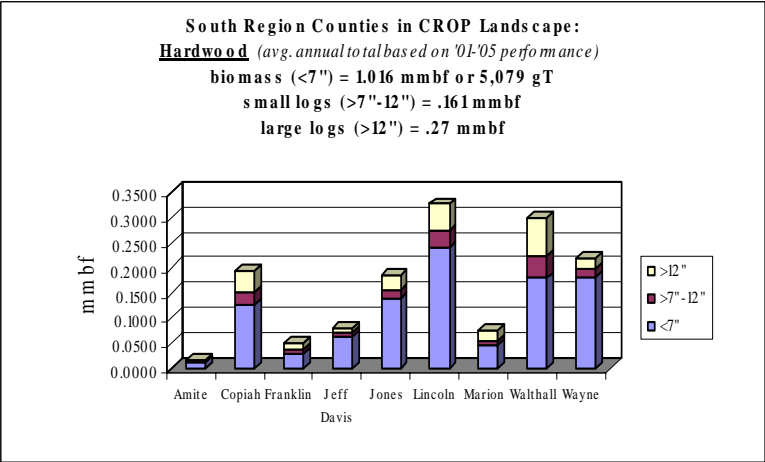
**Mississippi South Region: Hardwood CROP offering/removal**  
*(averaged annual total removal based on '01-'05 performance)\**  
**(gT = 5,079 / S = .161 mmbf / L = .2699 mmbf)**

**ROM # 16<sup>th</sup> HWD 1**

gT = green tons (up to 7" dbh)  
 S = small log mmbf (>7"-12" dbh)  
 L = large log mmbf (>12" dbh)

\*only those counties with 16<sup>th</sup> Section timber removal each year between '01 – '05 (18 out of 43).

South Region in CROP Landscape  
 ● (9 of 22 counties with annual removals)



A = Amite  
 B = Copiah  
 C = Franklin  
 D = Jefferson Davis  
 E = Jones  
 F = Lincoln  
 G = Marion  
 H = Walthall  
 I = Wayne

**Mississippi South Region: Hardwood CROP offering/removal**  
*(averaged annual total removal based on '01-'05 performance)\**  
**(gT = 5,079 / S = .161 mmbf / L = .2699 mmbf)**

**ROM # 16<sup>th</sup> HWD 1.1**

\*only those counties with 16<sup>th</sup> Section  
 timber removal each year between '01 – '05  
 (18 out of 43).

<i>South Region: Hardwoods</i>	<i>Biomass</i>		<i>Small Log</i>		<i>Large Log</i>	
	<i>gT</i>	<i>%</i>	<i>mmbf</i>	<i>%</i>	<i>mmbf</i>	<i>%</i>
<b>Amite</b>	66.18	1%	.001	1%	.0016	1%
<b>Copiah</b>	622.71	12%	.0266	16%	.0445	16%
<b>Franklin</b>	139.18	3%	.0086	5%	.0144	5%
<b>Jefferson Davis</b>	321.9	6%	.0058	4%	.0098	4%
<b>Jones</b>	696.42	14%	.0167	10%	.0280	10%
<b>Lincoln</b>	1200.11	24%	.0326	20%	.0546	20%
<b>Marion</b>	221.12	4%	.0114	7%	.0191	7%
<b>Walthall</b>	896.64	18%	.0446	28%	.0747	28%
<b>Wayne</b>	915.41	18%	.0137	8%	.0230	8%
<b>Total</b>	<b>5078.7</b>		<b>.161</b>		<b>.2699</b>	

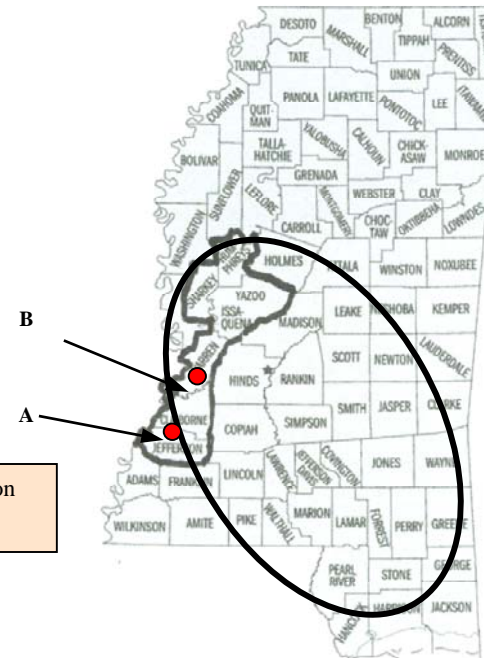
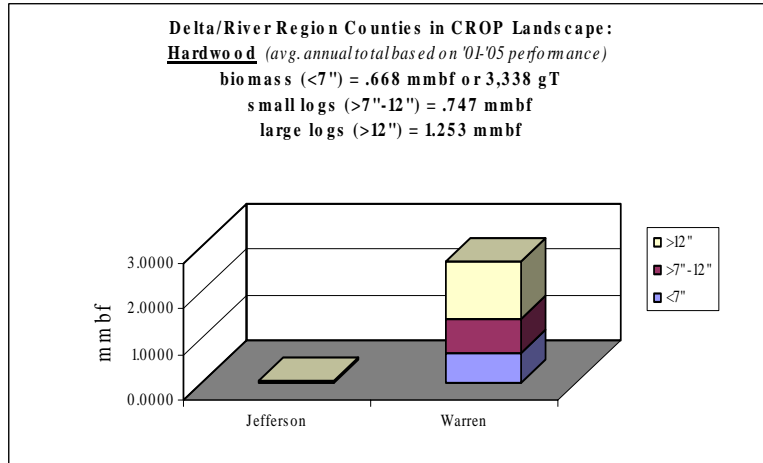
**Mississippi Delta/River Region: Hardwood CROP offering/removal**  
*(averaged annual total removal based on '01-'05 performance)\**  
**(gT = 3,338 / S = .747 mmbf / L = 1.253 mmbf)**

**ROM # 16<sup>th</sup> HWD 1**

\*only those counties with 16<sup>th</sup> Section  
 timber removal each year between '01 – '05  
 (18 out of 43).

gT = green tons (up to 7" dbh)  
 S = small log mmbf (>7"-12" dbh)  
 L = large log mmbf (>12" dbh)

*Delta/River Region in CROP Landscape*  
 ● (2 of 7 counties with annual removals)



**Mississippi Delta/River Region: Hardwood CROP offering/removal**  
*(averaged annual total removal based on '01-'05 performance)\**  
**(gT = 3,338 / S = .747 mmbf / L = 1.253 mmbf)**

**ROM # 16<sup>th</sup> HWD 1.1**

\*only those counties with 16<sup>th</sup> Section  
 timber removal each year between '01 – '05  
 (18 out of 43).

<i>Delta/River Region: Hardwoods</i>	<i>Biomass</i>		<i>Small Log</i>		<i>Large Log</i>	
	<i>gT</i>	<i>%</i>	<i>mmbf</i>	<i>%</i>	<i>mmbf</i>	<i>%</i>
<b>Jefferson</b>	107.1	3%	.0056	1%	.0094	1%
<b>Warren</b>	3231.33	97%	.7416	99%	1.2434	99%
<b>Total</b>	<b>3338.43</b>		<b>.7472</b>		<b>1.253</b>	

**Section C: Mississippi CROP  
Katrina-Downed Pine & Hardwood Resource Offering\***

\*see special note on next page for data & assumptions used

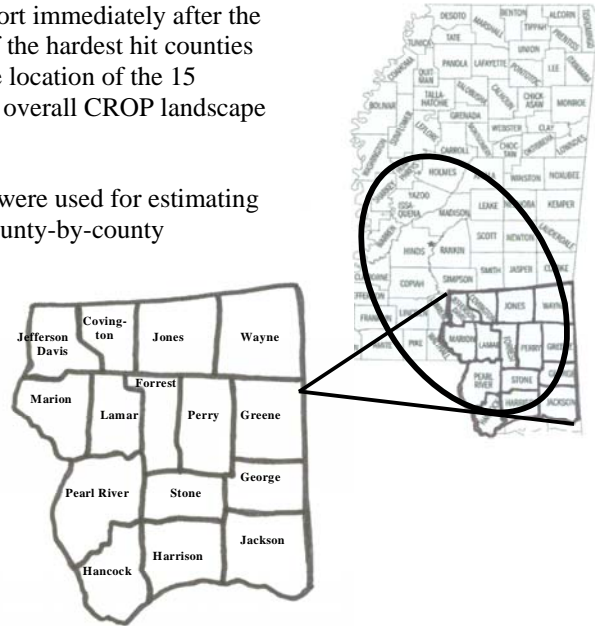
### Katrina-Downed Pine and Hardwood ROM Assumptions

Hurricane Katrina posed many problems for both public and private forestland owners relative to clean-up efforts and timeliness of clean-up efforts for the downed pine and hardwoods in the hurricane path. Although no statewide data exists to document volume of downed material, the Mississippi Institute for Forest Inventory (MIFI) did conduct a reconnaissance effort immediately after the hurricane to document estimated downed volume in 15 of the hardest hit counties in the south part of the state. The attached map shows the location of the 15 counties surveyed by MIFI after Katrina in relation to the overall CROP landscape evaluated in this project.

Using the MIFI baseline data, the following assumptions were used for estimating current volumes potentially available for clean-up on a county-by-county basis:

#### Assumptions for pine:

- g) Diameter sizes by volume (in mmbf) for material still left on the ground was provided by MIFI as follows: 11.9% for trees <7" dbh; 48% for trees >7"-12"; and 40.1% for trees >12" dbh. It was further assumed that 50% of the 7"-12" material would be 7"-9" material with the remainder >9"-12".
- h) Immediately following the hurricane, some clean-up efforts were undertaken by Georgia Pacific and others. Estimated **remaining volumes** by diameter size provided by MIFI were as follows: 70% for <7"; 55% for 7"-12"; and 40% for >12".
- i) Blue stain occurs only in the sapwood of pine. It was assumed that 25% of volume in trees <12" would be sapwood, and 30% in trees >12". It was assumed that 100% of all sapwood would have blue-stain.
- j) Decay rates were applied to sapwood only; 100% heartwood volume assumed usable. Decay rate assumptions for sapwood were as follows: for projected volume in trees <9" – 100% decay rate assumed with entire volume converted to green tons (gT). For 9"-12" trees, a 30% decay rate was used. For trees >12" – a 12% decay rate was used. All decayed volume was converted to gT. All non-decayed volume was assumed as usable for blue-stain 'characterwood' use.



#### Assumptions for hardwood:

- k) Diameter sizes by volume (in mmbf) for material still left on the ground was provided by MIFI as follows: 10.6% for trees <7" dbh; 37.2% for trees >7"-12"; and 52.2% for trees >12" dbh. It was further assumed that 50% of the 7"-12" material would be 7"-9" material with the remainder >9"-12".
- l) After initial clean-up efforts, estimated **remaining volumes** by diameter size provided by MIFI were as follows: 85% for <7"; 76% for 7"-12"; and 60% for >12".
- Decay rate assumptions were as follows: for projected volume in trees <7" – 100% decay rate assumed with entire volume converted to green tons (gT). For 7"-9" trees, a 27% decay rate was used. For >9"-12" trees, a 20% decay rate was used. For trees >12" – a 13% decay rate was used. All decayed volume was converted to gT. All non-decayed volume was assumed usable in solid wood production.



**Section C: Mississippi CROP  
Katrina-Downed Pine & Hardwood**

*Page*

**Katrina-Downed Pine ROMs**

a) Pine biomass by County .....	82
b) Pine Blue-stain 9"-12" by County .....	83
c) Pine Blue-stain >12" by County .....	83
d) Pine heartwood 9"-12" by County .....	84
e) Pine heartwood >12" by County .....	84

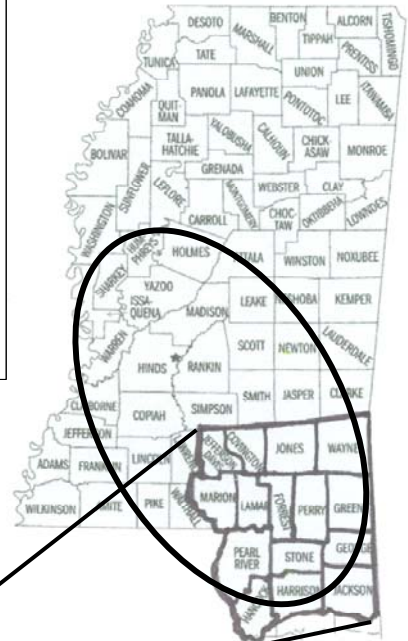
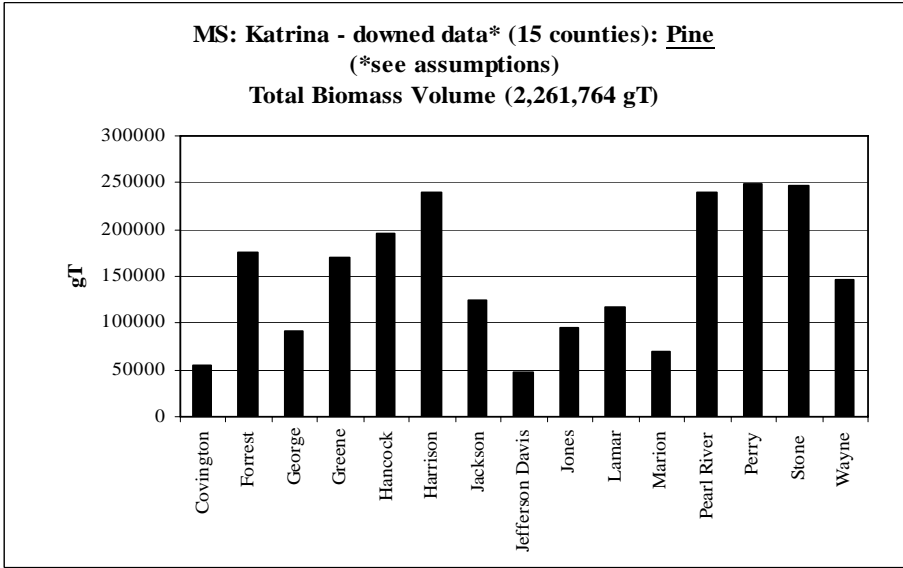
**Katrina-Downed Hardwood ROMs**

a) Hardwood biomass by County .....	85
b) Hardwood 7"-9" by County .....	86
c) Hardwood >9"-12" by County .....	87
d) Hardwood >12" by County .....	88

**Pine: Katrina-Downed Biomass (gT)\***  
 (\*see assumptions)  
**Total biomass volume = 2,261,764**

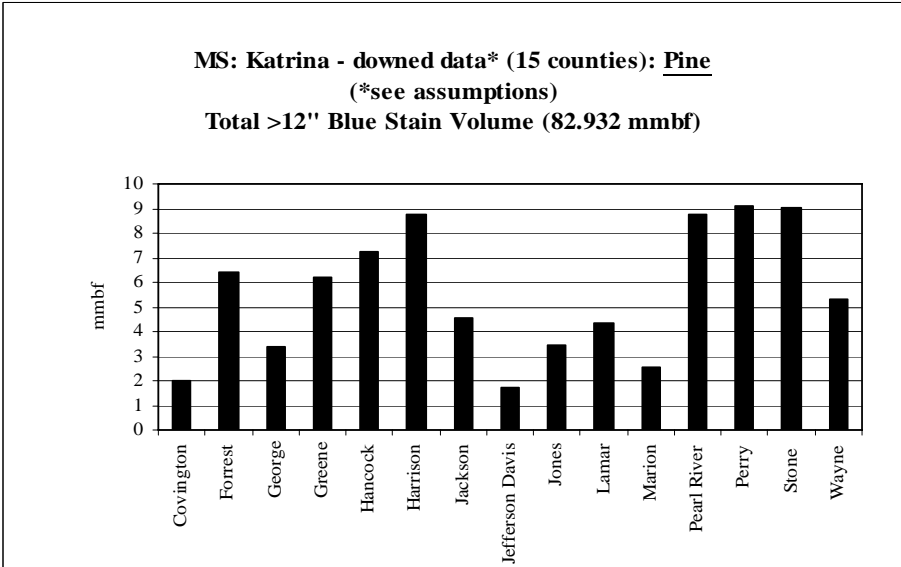
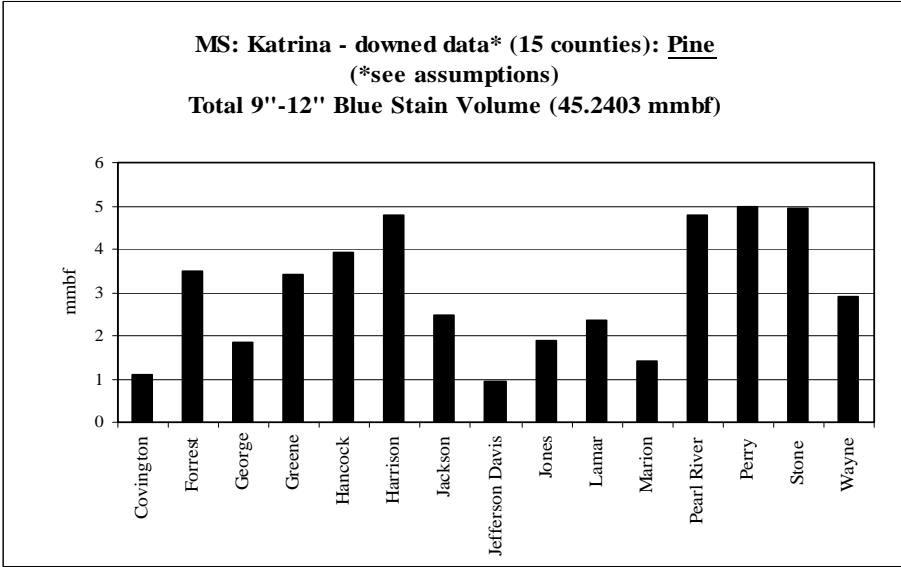
**ROM # Katrina-Pine 1**

gT = green tons



**Pine: Katrina-Downed *Blue Stain*\***  
 (\*see assumptions)  
**Total blue stain volume = 128.172 mmbf**

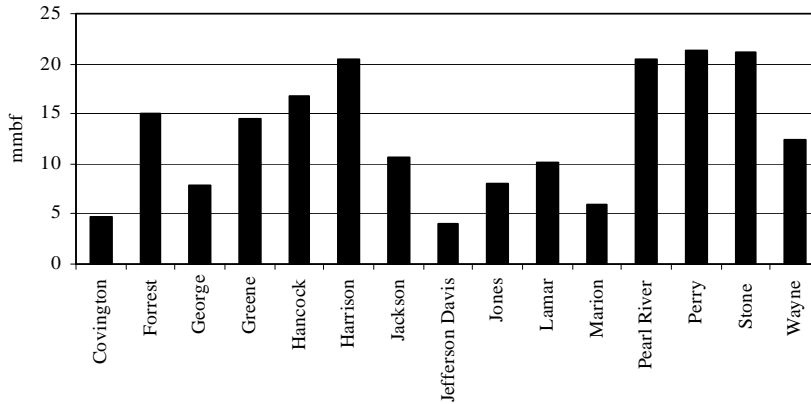
**ROM # Katrina-Pine 1.1**



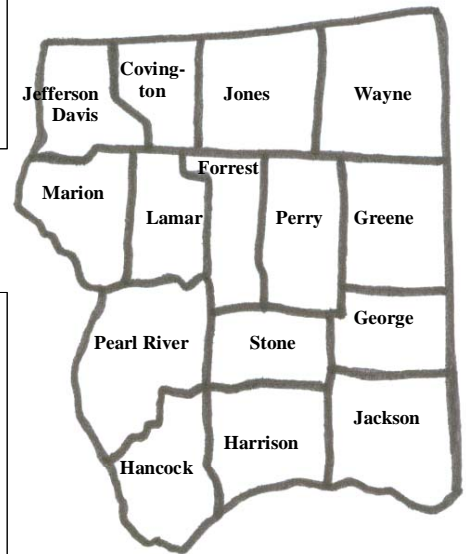
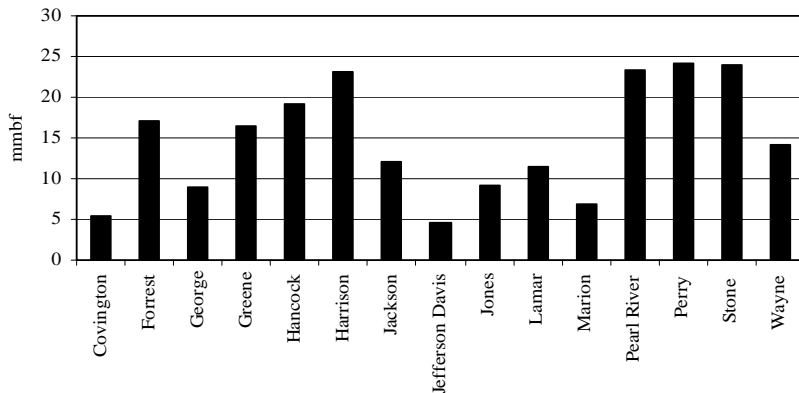
**Pine: Katrina-Downed *Heartwood*\***  
 (\*see assumptions)  
**Total heartwood volume = 413.782 mmbf**

**ROM # Katrina-Pine 1.2**

**MS: Katrina - downed data\* (15 counties): Pine**  
 (\*see assumptions)  
**Total 9"-12" Heartwood Volume (193.887 mmbf)**



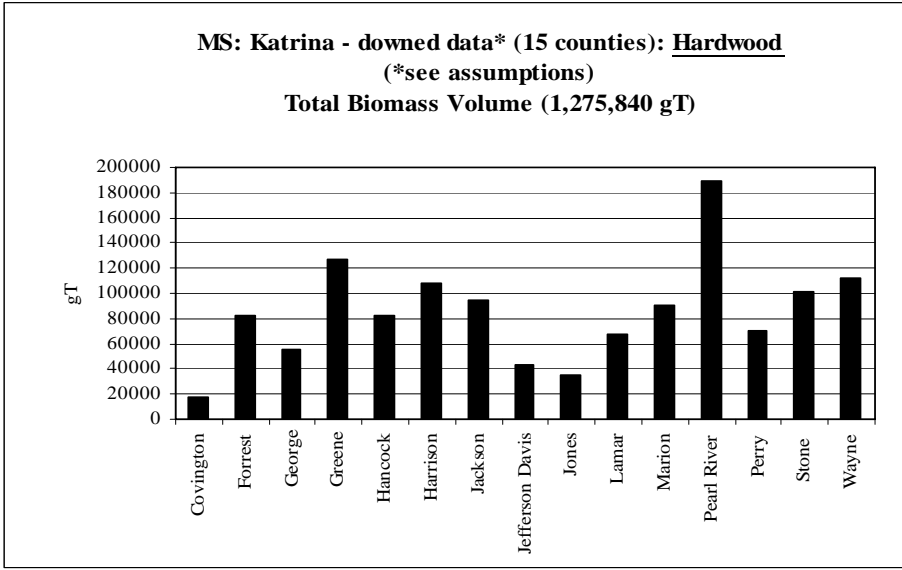
**MS: Katrina - downed data\* (15 counties): Pine**  
 (\*see assumptions)  
**Total >12" Heartwood Volume (219.895 mmbf)**



**Hardwood: Katrina-Downed *Biomass* (gT)\***  
 (\*see assumptions)  
**Total biomass volume = 1,275,840**

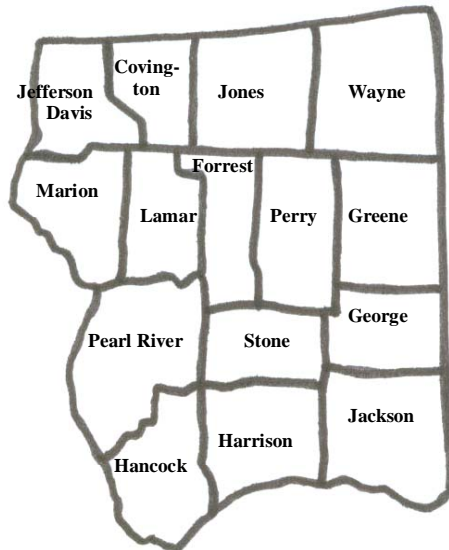
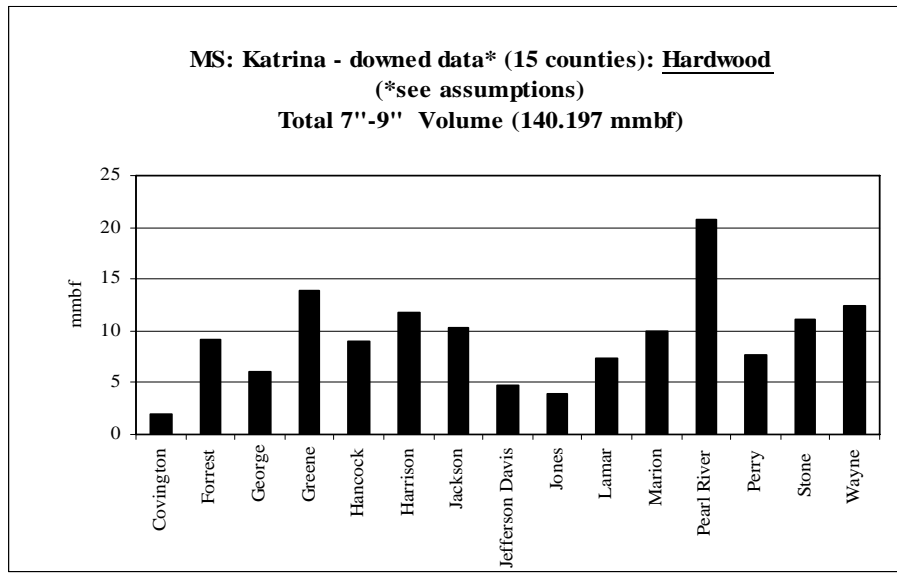
**ROM # Katrina-HWD 1**

gT = green tons



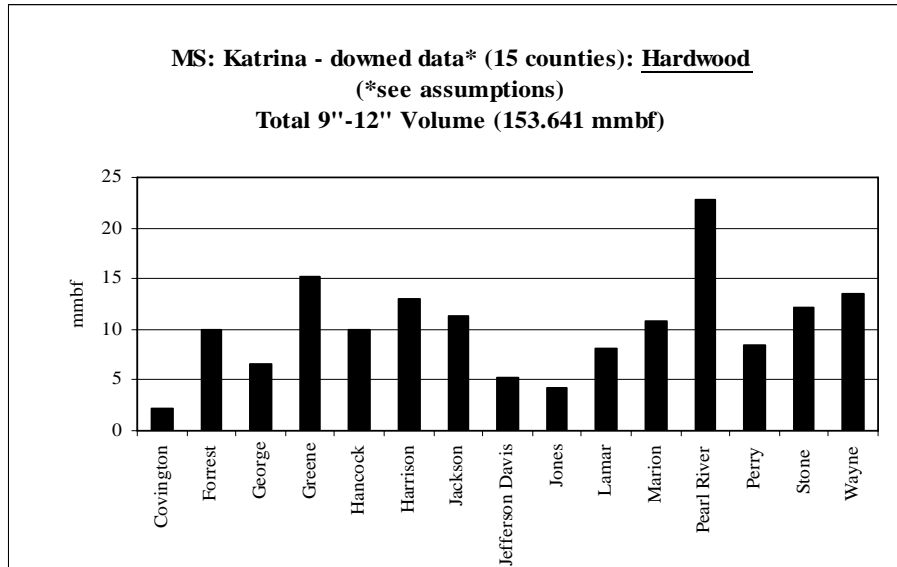
**Hardwood: Katrina-Downed 7''-9''\***  
 (\*see assumptions)  
**Total volume = 140.197 mmbf**

**ROM # Katrina-HWD 1.1**



**Hardwood: Katrina-Downed 9"-12"\***  
 (\*see assumptions)  
**Total volume = 153.641 mmbf**

**ROM # Katrina-HWD 1.2**



**Hardwood: Katrina-Downed >12''\***  
 (\*see assumptions)  
**Total volume = 284.384 mmbf**

**ROM # Katrina-HWD 1.3**

