

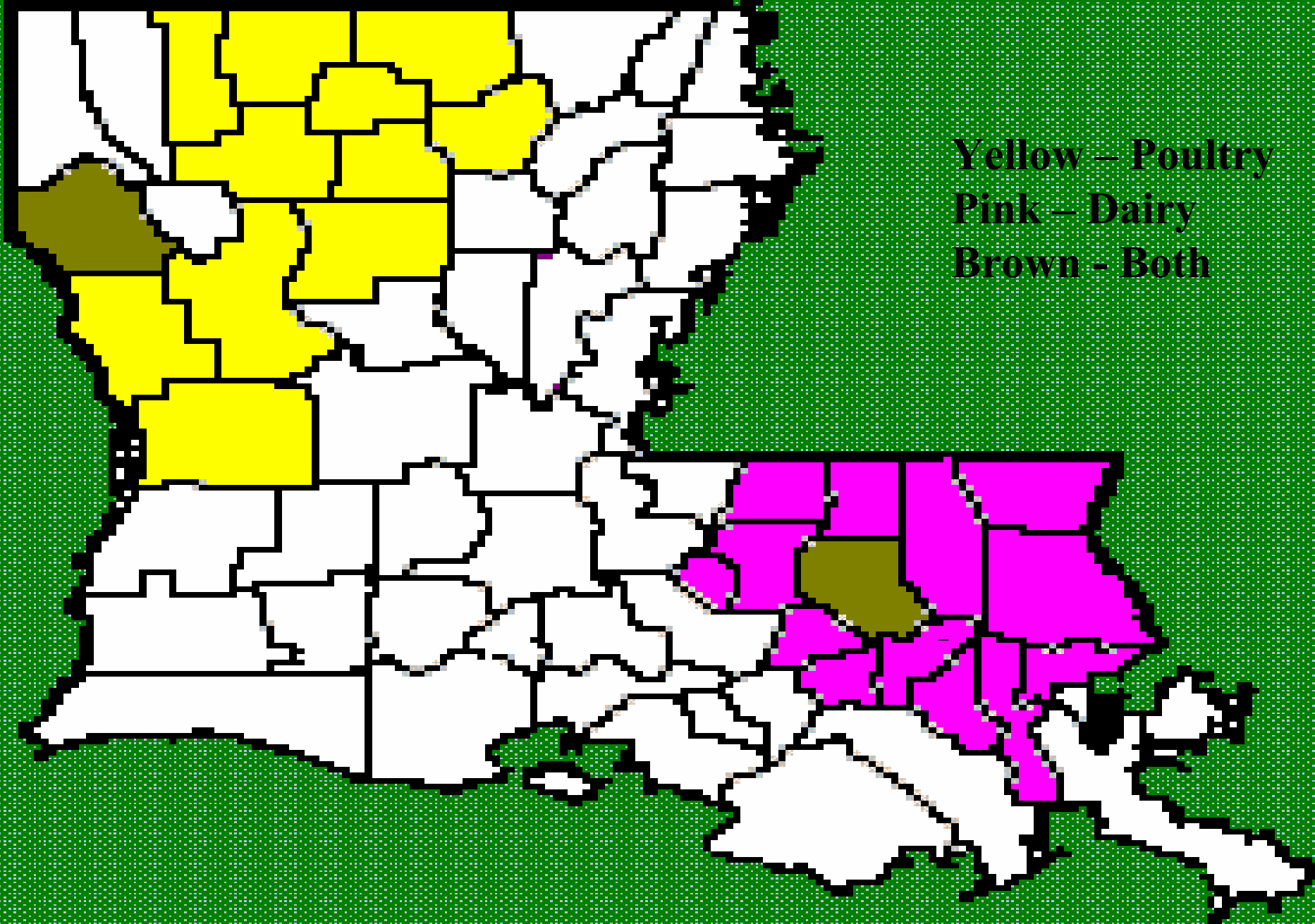
Louisiana's Nutrient Management Educational/Research Programs



Matthew F. Stephens
Area Agent
Calhoun, La.

Louisiana Facts

- **Poultry production is largest animal waste contributor**
- **Very little swine production**
- **No large beef feedlots**
- **90% of the dairy herds are concentrated in southeastern part of the state and one parish in northwestern. Ave. herd is ~ 125**
- **Horse Racetracks (4)**
- **Aquaculture: Crawfish, Catfish and Alligator**

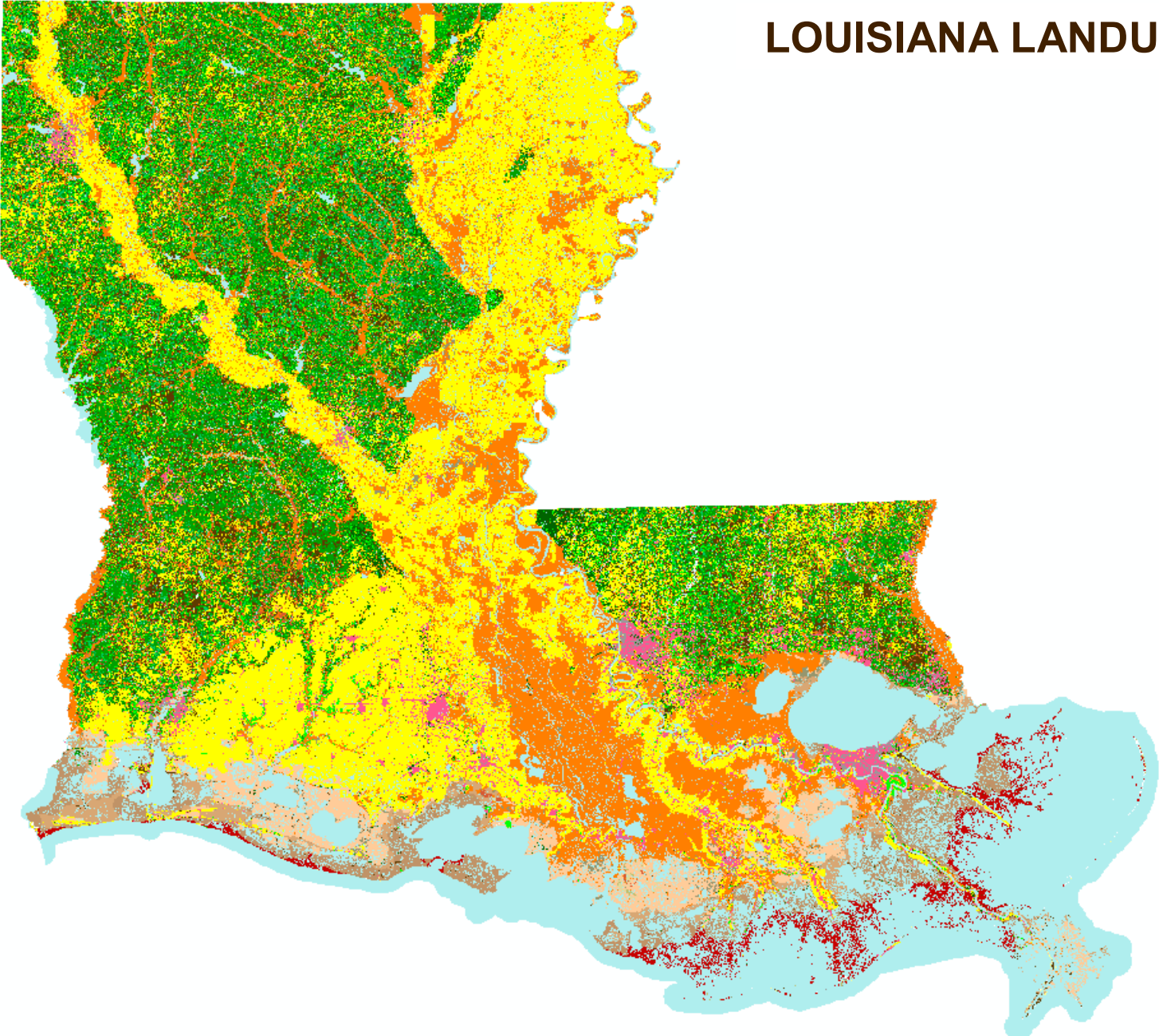


Yellow – Poultry
Pink – Dairy
Brown - Both

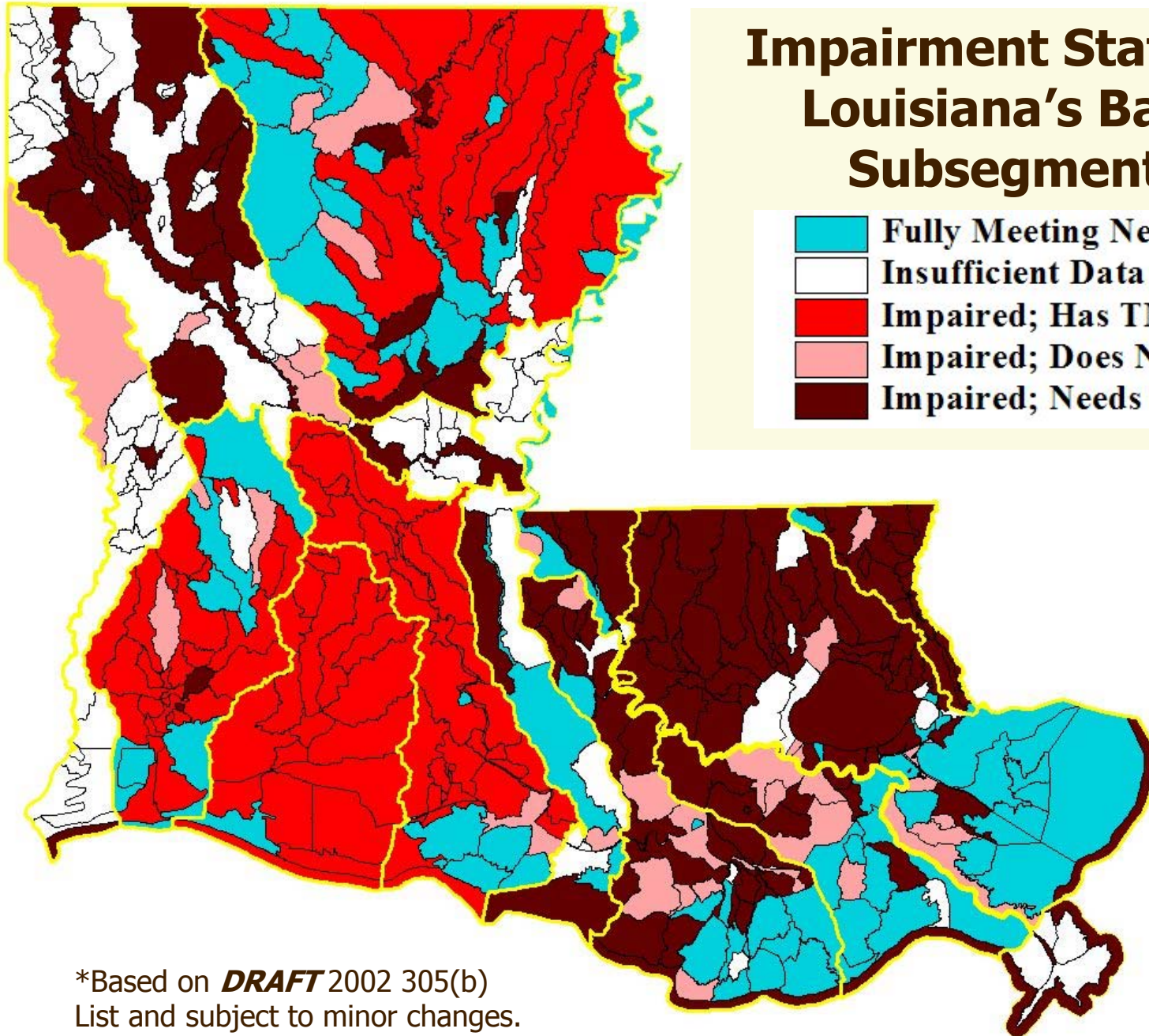
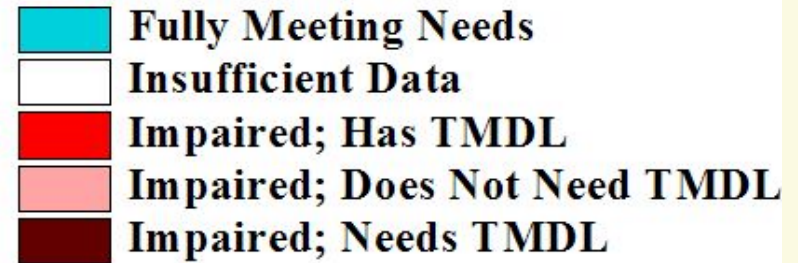
Louisiana Facts

- Cotton491,000 acres
- Rice.....530,000 acres
- Soybeans....770,000 acres
- Grain Crops.....697,000
- Sugarcane....495,000
- Forestry....Largest Industry

LOUISIANA LANDUSE



Impairment Status of Louisiana's Basin Subsegments



*Based on **DRAFT** 2002 305(b)
List and subject to minor changes.

Research/Demonstration Activities

There are currently approximately 25 research or demonstration projects being conducted by LSU AgCenter personnel.

Examples:

1. **Reducing Fecal Nutrient Content Through Diet Manipulation**
2. **Constructed Wetlands for Row Crop Runoff**
3. **Constructed Wetlands for Treatment of Dairy Wastes**
4. **Management of Aquaculture Effluents**
5. **Reducing Phosphorous Inputs to Watersheds From Poultry Production**

Educational Programs

- 1. Louisiana Master Farmer Program**
- 2. Nutrient Management Educational Programs**
- 3. Commodity Assoc. Programs**
- 4. On Farm Visits by Agents**
- 5. Mass Media**

Regulatory History

- **Agriculture is basically free from nutrient related regulations**
- **CAFOs will be regulated by general permit**
- **TMDL regulations have not been established**
- **Municipal bio-solids are regulated per pathogens**
- **All nutrient regulations will follow federal guidelines using the P. I. designed by the NRCS.**

Master Farmer Program

Over 800 producers accounting for 650,000 acres of production are currently enrolled in Master Farmer Program.

Phase I...8 Hour Environmental Stewardship Training.

Phase II...Model Farm Field Day/Virtual Model Farm Training

Phase III...Development & Implementation of CNMP

On Farm Challenges

- **Producers not accustomed to environmental issues**
- **Producers weary of governmental agencies**
- **“It’s my place and I’ll do what I want to do”**
- **Less land available to “set back”**
- **Integrators not wanting producers to gather**

Educational Challenges

- ❖ **Lack of “local” research on BMP effectiveness**
- ❖ **Lack of alternative usage options that are feasible for agriculture producers**
- ❖ **Lack of concurring among stake holders**
- ❖ **Water quality education is a new issue**

Educational Needs

- ❖ **Integration of water quality education with major degree programs within university**
- ❖ **Cohesion of policies, opinions, data, etc. among all stakeholders**
- ❖ **Educational effort targeting producers regarding “why” issues must be addressed**
- ❖ **On farm demonstrations of effective BMPs**

Questions

LSU

AgCenter

Research & Extension