

Bent Creek Experimental Forest

New Facility Upgrades

Watershed Repairs....

- Trail Rehabilitation
- Road Repair
- Stream Bank Restoration
- Lake Dredging

What to Expect.... The details!

Repairs.... UpgradesWhy?

Bent Creek is a heavily used recreation area, favored for hiking, biking, running, and other recreational uses.

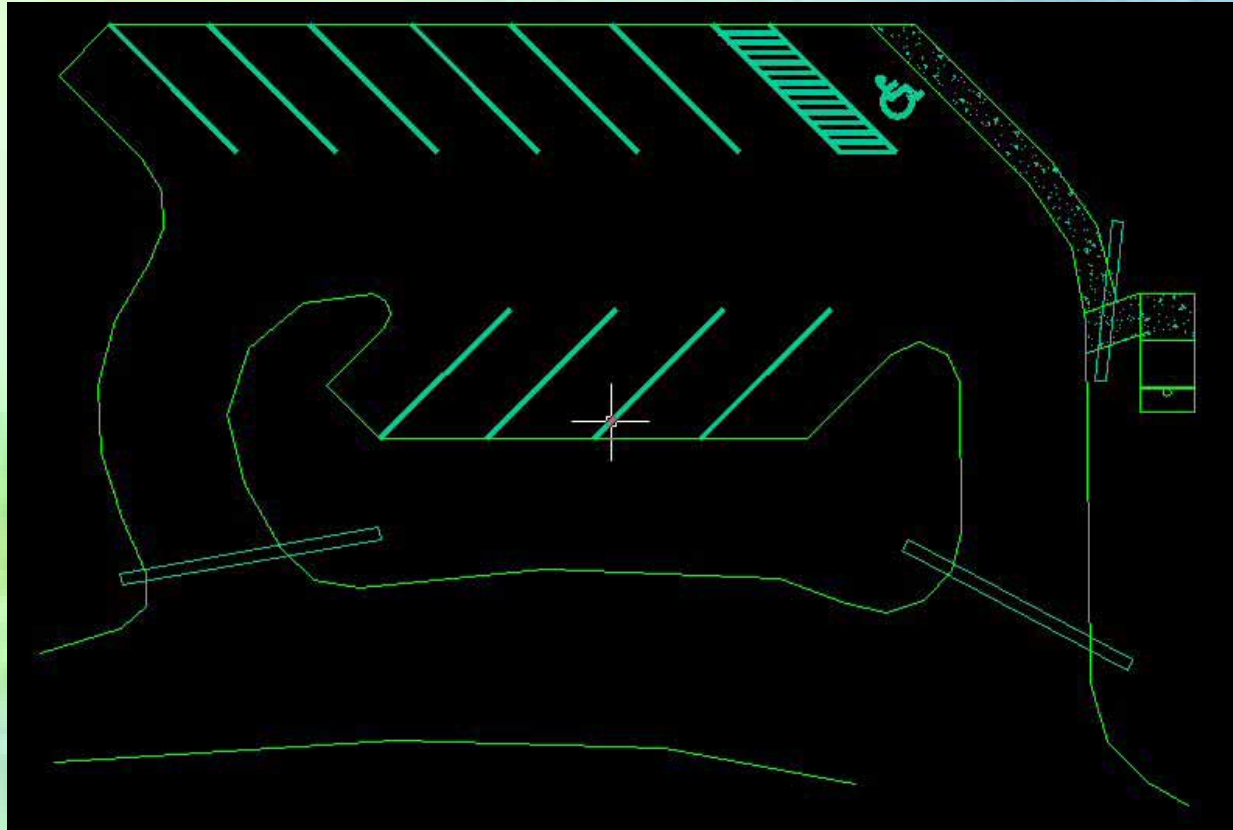
Increased visitor use has required upgrades to parking areas and bathroom facilities.

Parking Lot Expansion & Upgrades



Parking lots were paved in April

Parking Lot Expansion & Upgrades



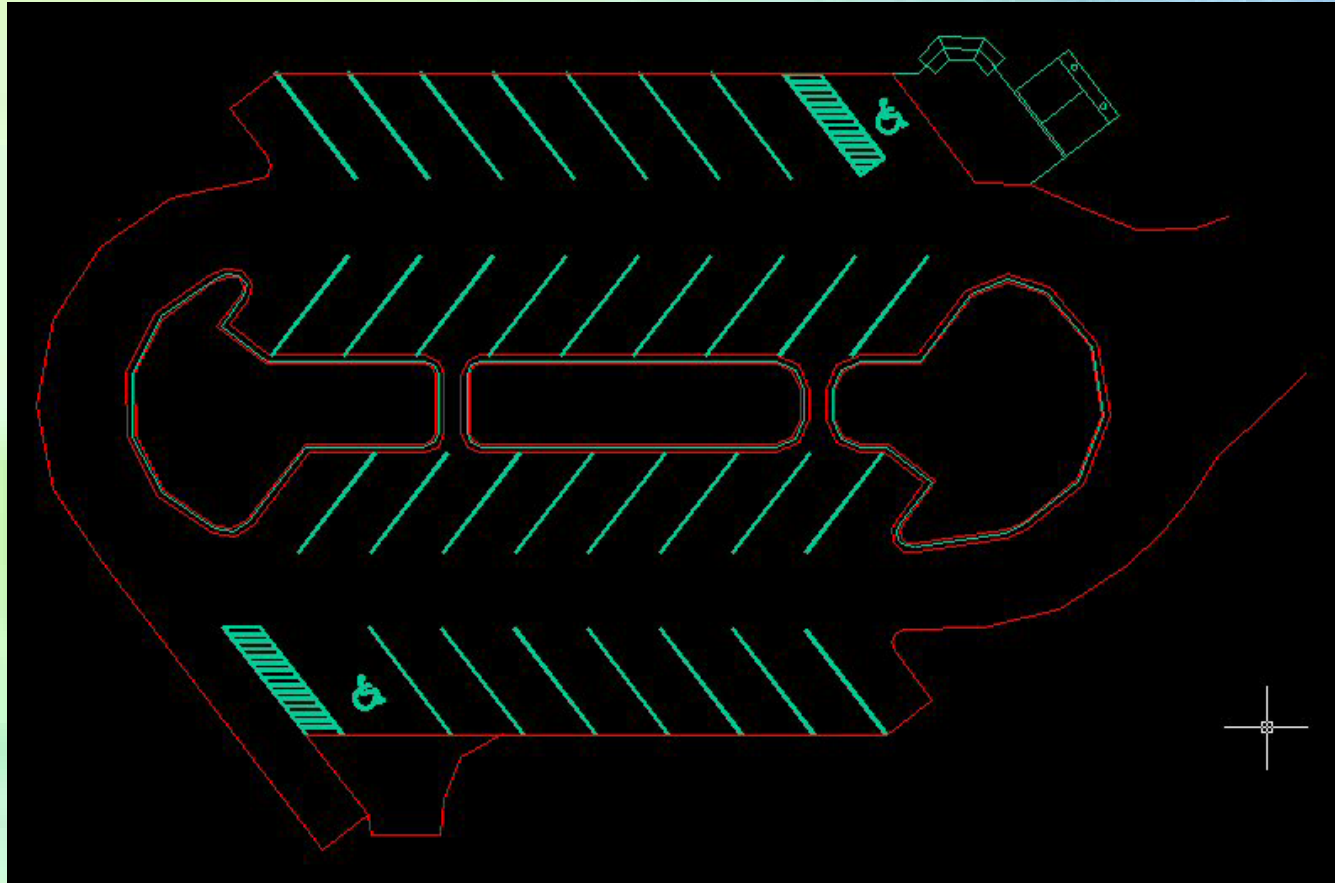
13 new spaces, SST, & Kiosk at Ledford Branch

Parking Lot Expansion & Upgrades



Rice Pinnacle Parking Lot - 4/12/06

Parking Lot Expansion & Upgrades



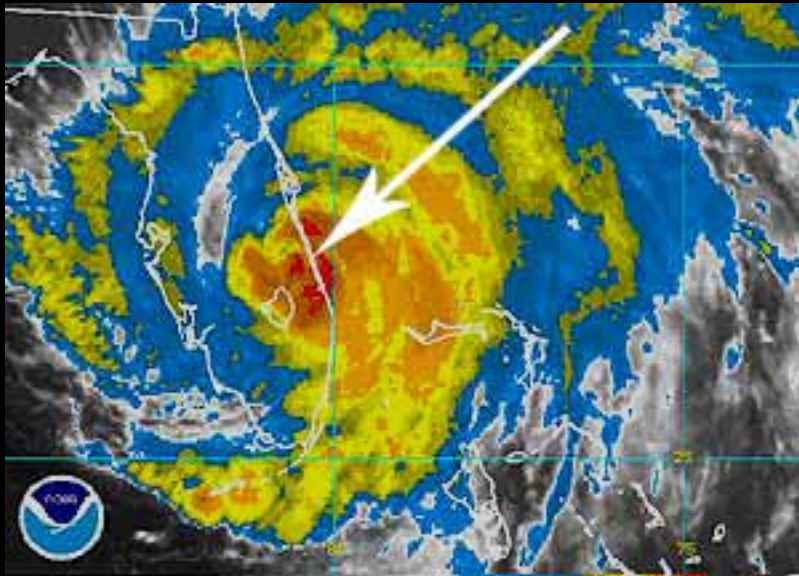
36 spaces at Rice Pinnacle

New Pit Toilets Installed



At Ledford Branch, Rice Pinnacle, and Hardtimes lots

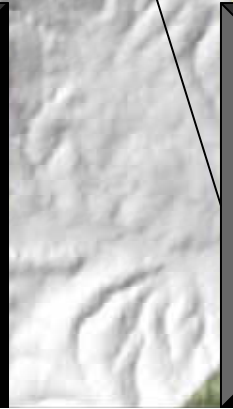
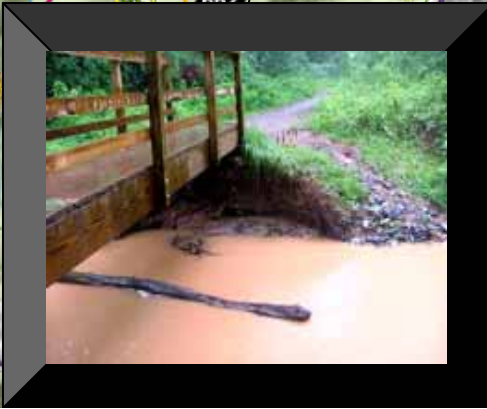
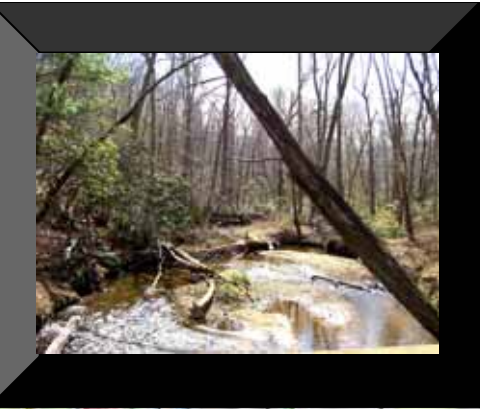
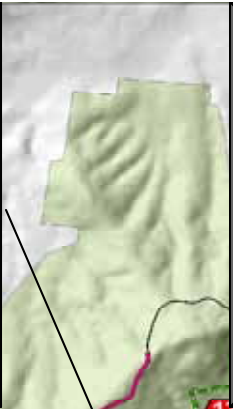
Repairs.... Upgrades Why?



Hurricane Frances 9/8/04
14 inches of rain in 24 hours



Hurricane Ivan 9/17/04
Total rainfall for September
was more than 2 feet!

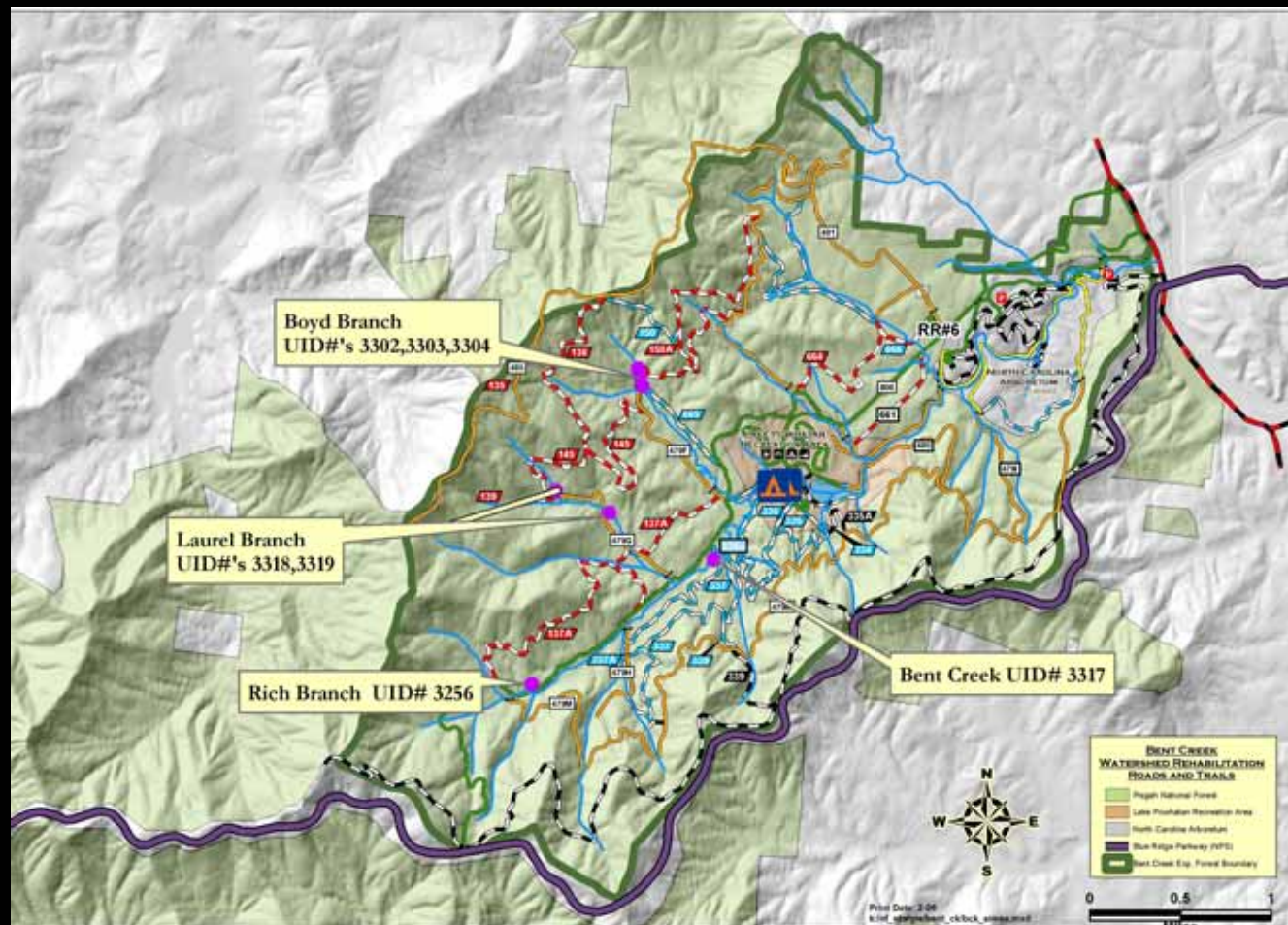


Watershed Rehabilitation Activities

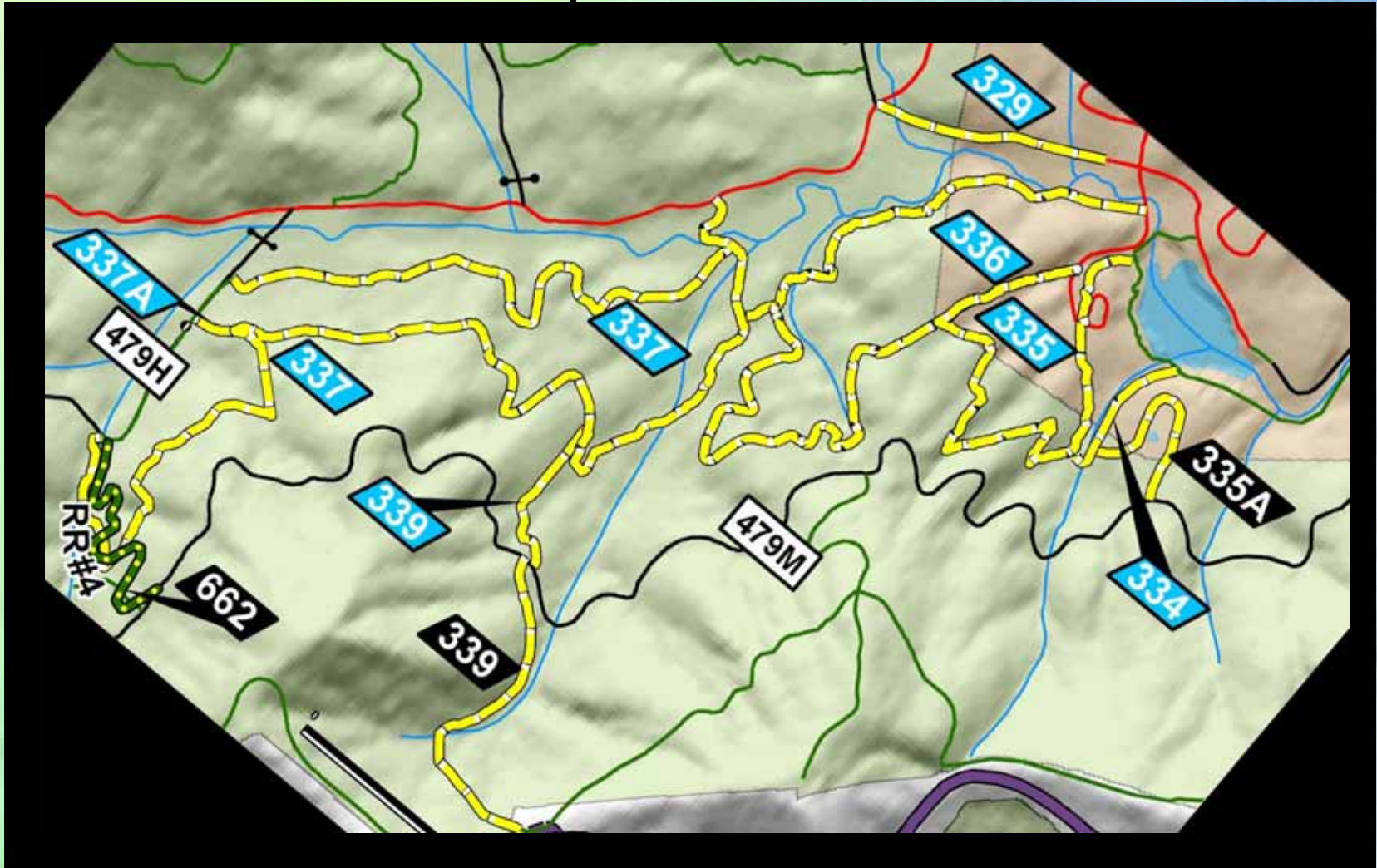
(Work Scheduled Spring - Fall)

- Trail Rehabilitation & Re-contouring
- Road Repair & Re-contouring
- Stream Bank Restoration
- Lake Dredging

Stream Restoration Projects



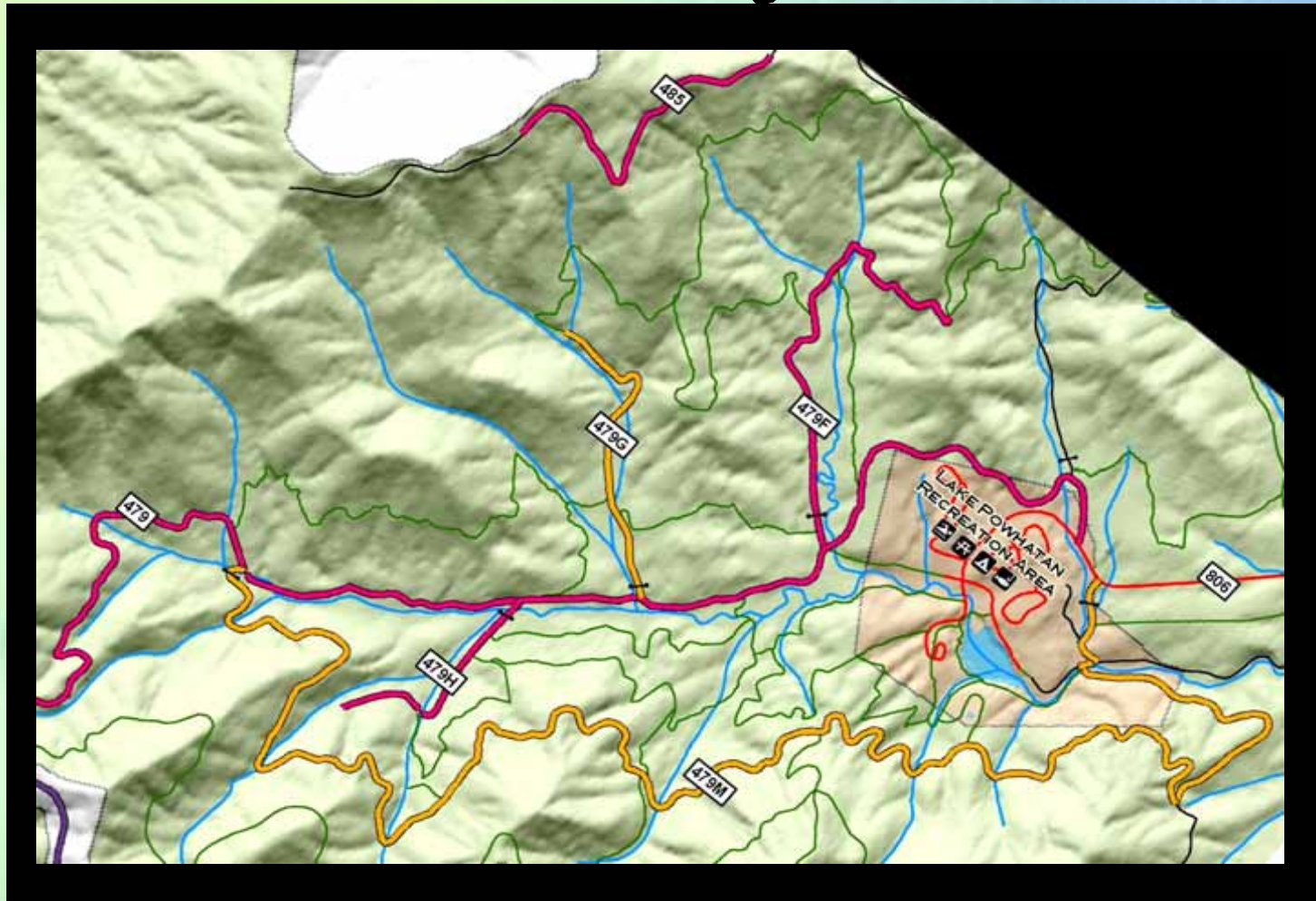
Trail Projects ~ South Side



Trail Projects ~ What to Expect

- New Drainage Features
- Closure of unauthorized trails
- Rerouting off the fall-line where practical
- Tread restoration
- Stream ford maintenance

Road Projects



Road Projects ~ What to Expect

- Clearing road limits (bushhog)
- Re-contouring for proper drainage
- Cleaning & replacing culverts
- Armoring wet areas ~ with smoother top coat of fine-sized material
- Dump-trucks will be exiting Hardtimes parking lot

Road Projects ~ What to Expect

Efforts to Minimize User Impact

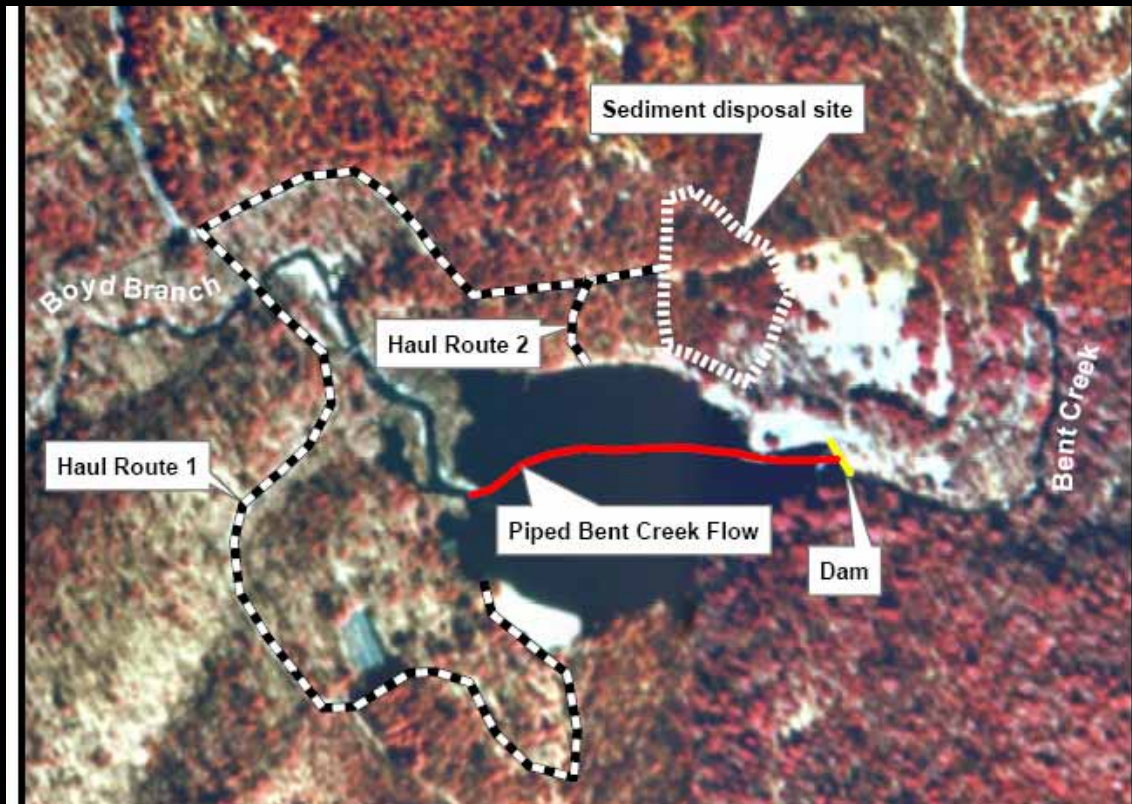
- Greatly reduced aggregate from usual road design specifications
- Work is staggered to reduce impacts
- Ballast only in drainage dips on storm damaged roads ~ with fine top course
- Road stays open to cyclist ~ use caution, may need to walk around construction areas
- No construction on weekends

Construction Info at Kiosks



Temporary Kiosk at Ledford Branch Parking Lot

Lake Dredging Project



Proposed Action with Potential Haul Routes & Disposal Site

Lake Dredging ~ What to Expect

- Planned for Mid-Sep thru Jan 07
- Lake drawdown & dewatering ~ 4 weeks
- Mechanical Dredging 2-3 months
- 1300+ dump-truck loads hauled for disposal