

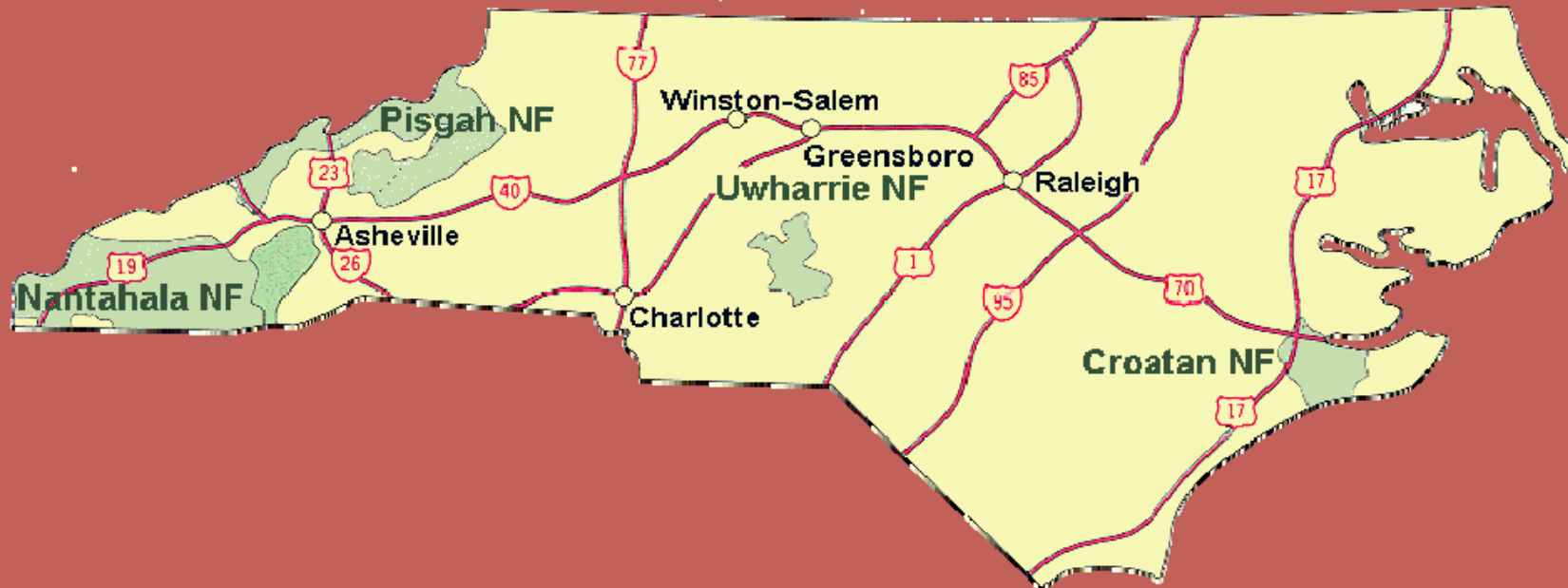
# National Forests in NC Restoration Workshop July 26, 2008



*Nantahala National Forest*



# National Forests in North Carolina



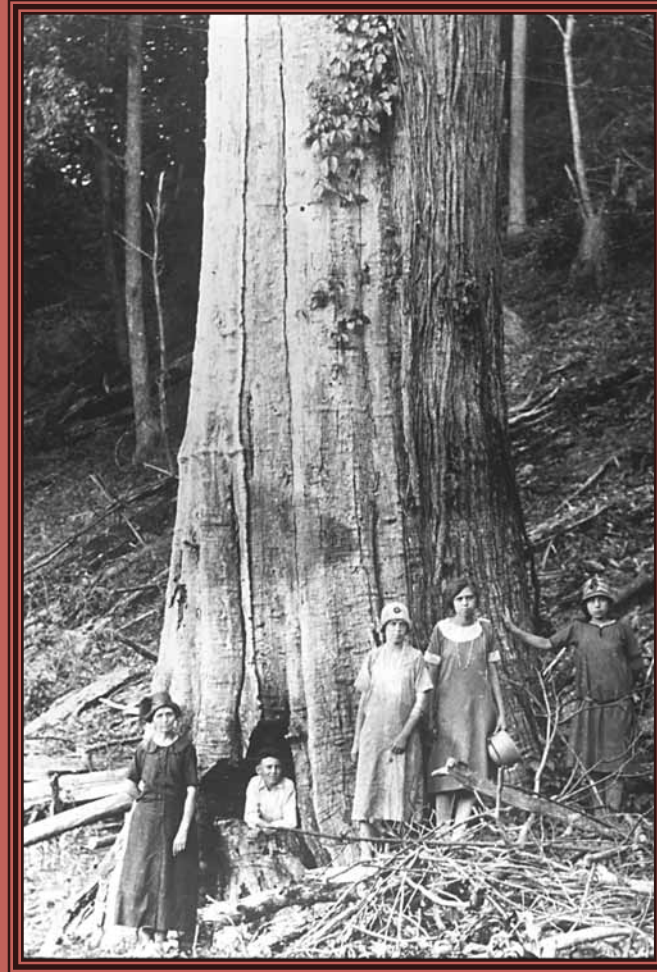
# Why We Are Here Today

- **Regional Focus on Restoration (protect, restore, respond)**
- **Emphasis on Partnerships**
- **Leverage cooperative efforts**
- **Prioritize work on the ground**



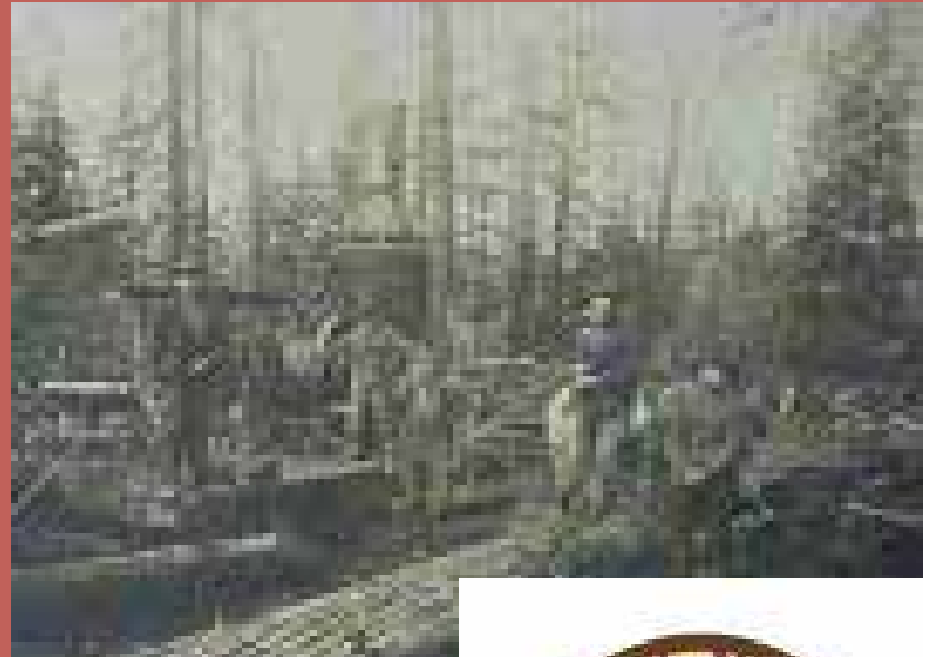
# American Chestnut

■ A family stands in front of a huge chestnut tree. The forests certainly looked different prior to the arrival of the chestnut blight. This photo may have been taken sometime in the 1920s.

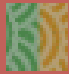


# Factors Which Affected Current Forest Conditions

- Exploitive logging
- Fire Suppression
- Loss of Chestnut
- Selective Logging
- Land Development
- Loss of Hemlocks



# Objective of this meeting

 To identify restoration priorities for the Nantahala and Pisgah National Forests that partners, managers and scientists consider important and support.



# Desired Outcomes

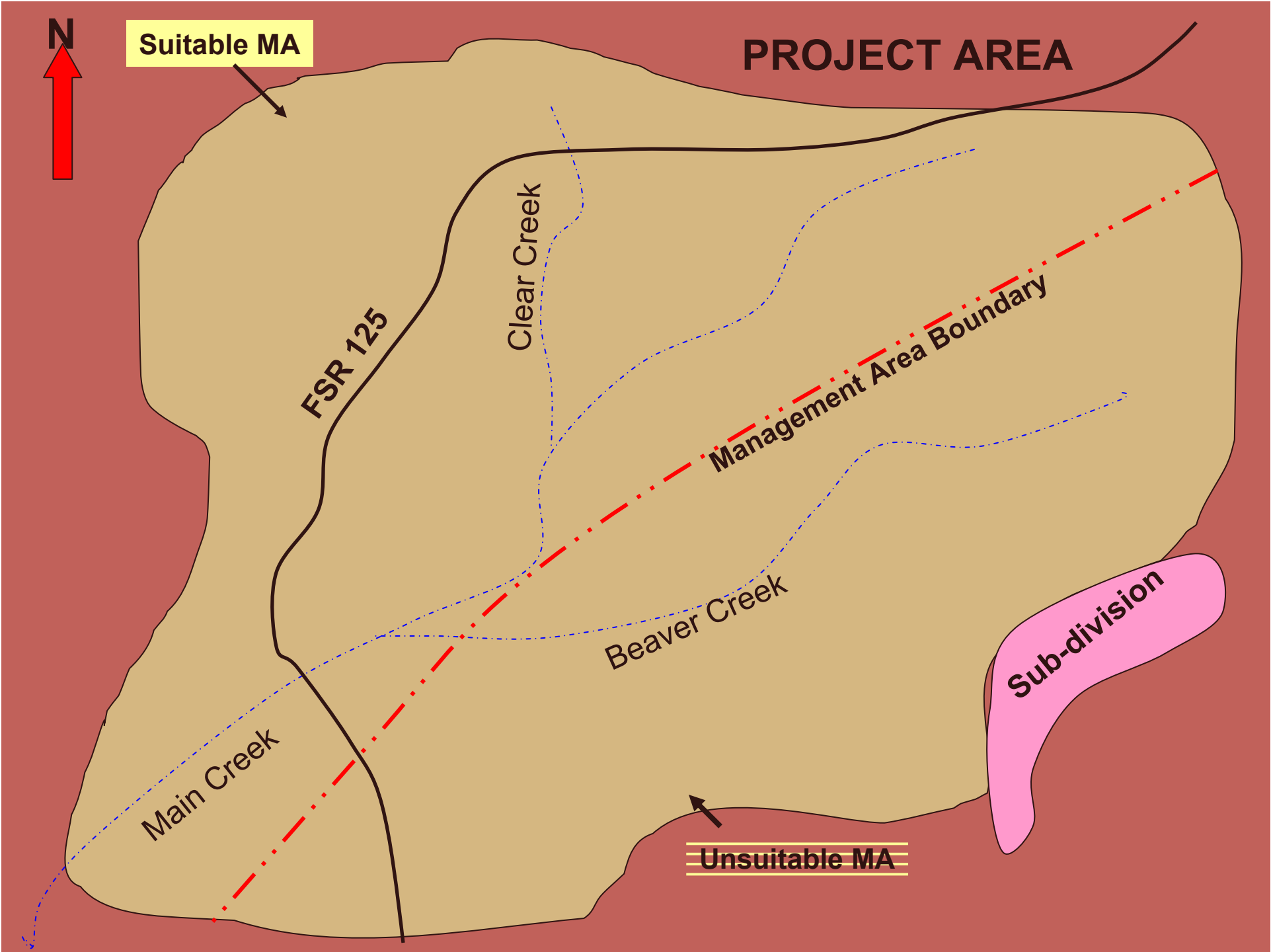
- **Enthusiasm grows for accomplishing restoration goals across the Forest.**
- **Restoration goals are integrated into project planning.**
- **Opportunities for future cooperative efforts are identified.**
- **Dialogue helps set the stage for Forest Plan amendment / revision.**



# Rapid Assessment Process

 **Uses Forest Plan direction to identify “needs” for an area and possible activities to address the highest priority needs.**





Suitable MA

PROJECT AREA

FSR 125

Clear Creek

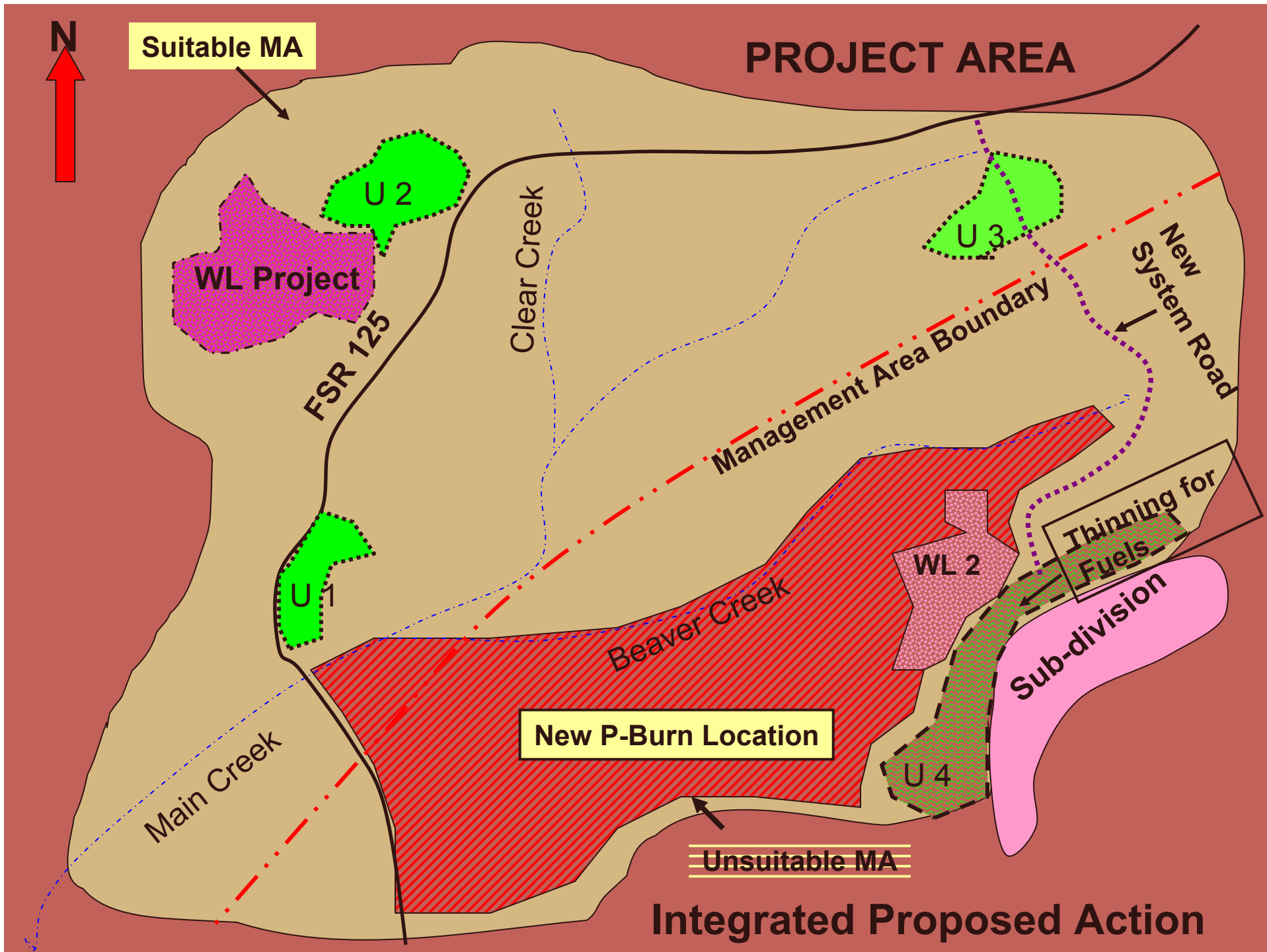
Management Area Boundary

Beaver Creek

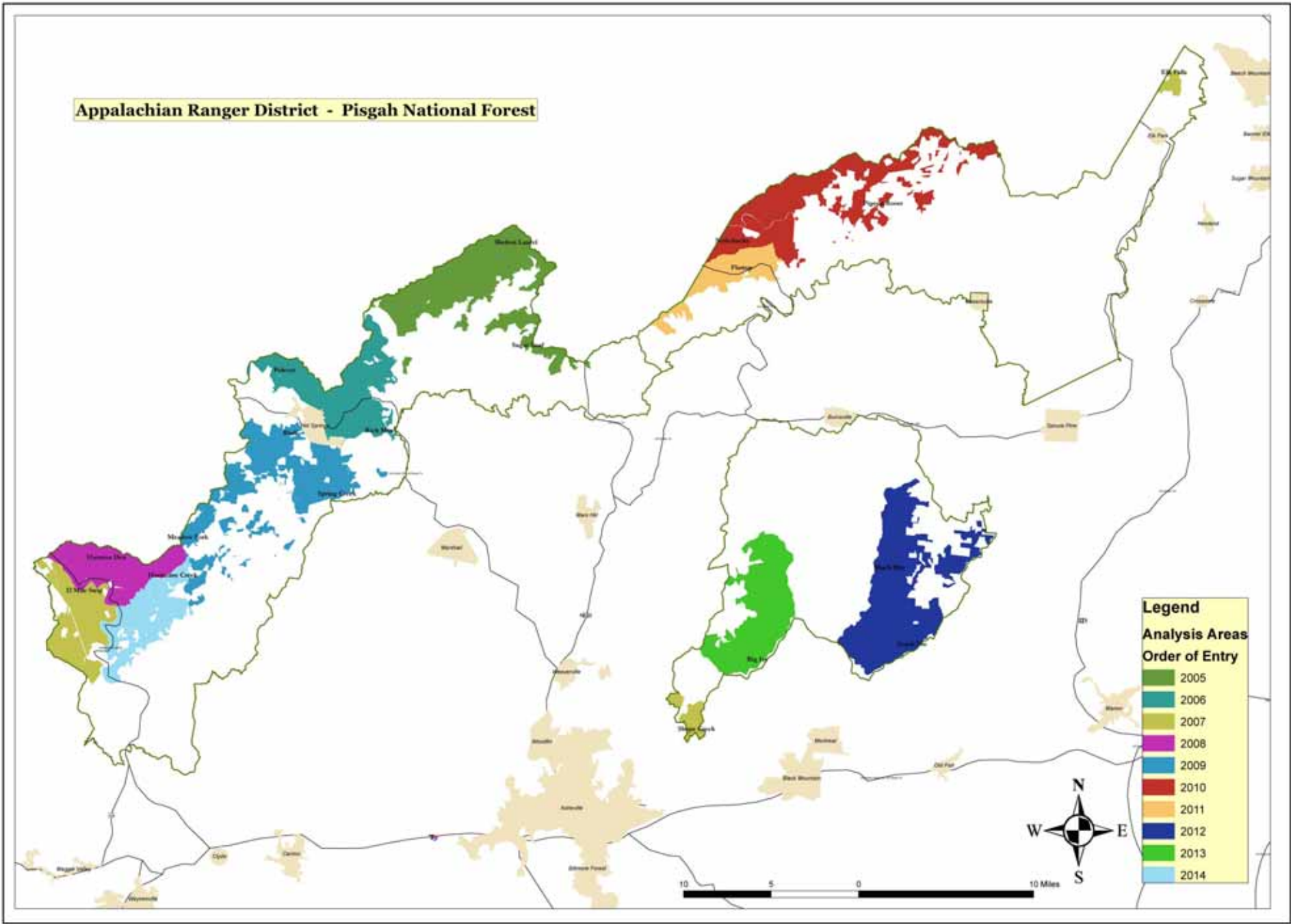
Main Creek

Sub-division

Unsuitable MA



**Appalachian Ranger District - Pisgah National Forest**



# What defines a restoration priority for this meeting?

- Addresses a critical ecosystem restoration need.
- Holds high potential for impact (where our actions can make a big difference).
- Supported by FS and Partners.
- Has large-scale application.



**Our approach  
for today...**

