

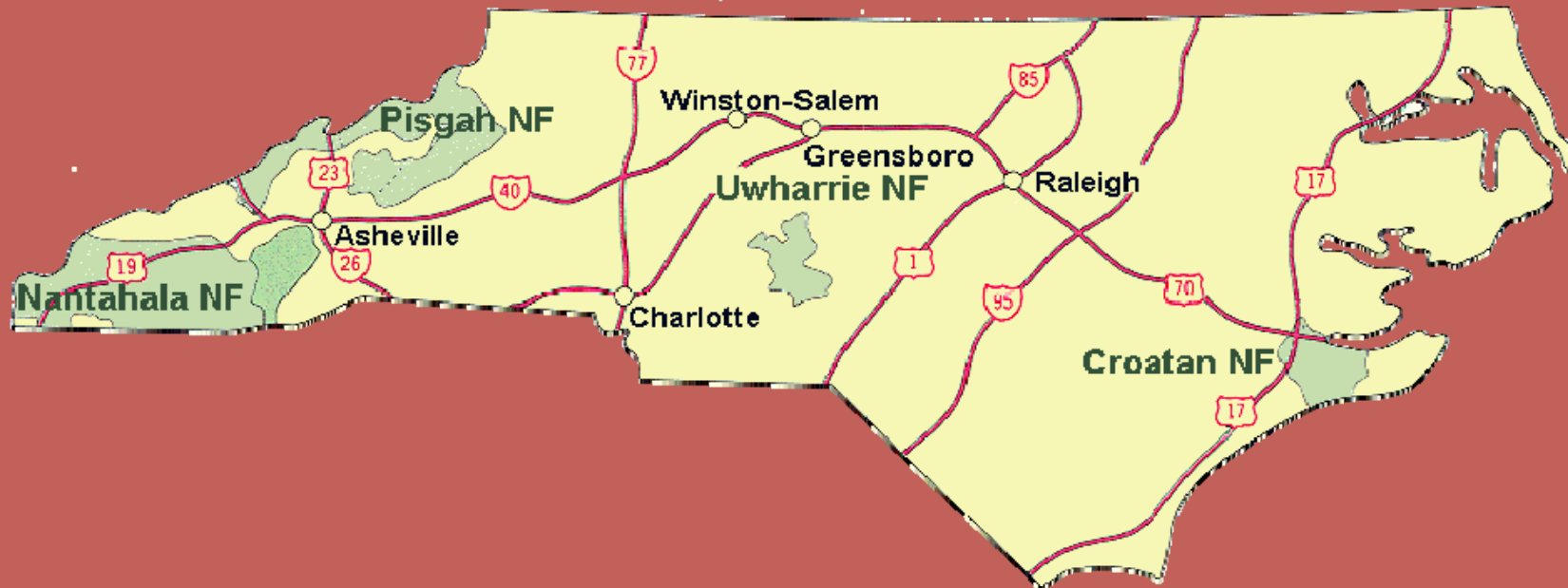
National Forests in NC Restoration Workshop August 23, 2008



Nantahala/Pisgah National Forest



National Forests in North Carolina




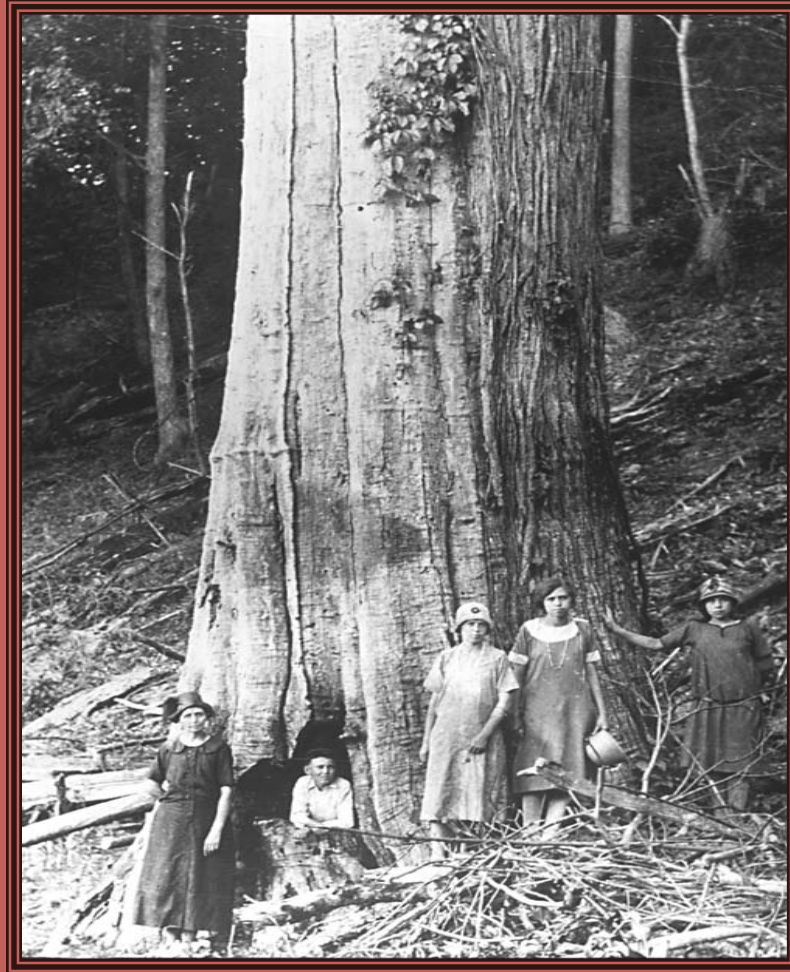
Why We Are Here Today

- **Regional Focus on Restoration (protect, restore, respond)**
- **Emphasis on Partnerships**
- **Leverage cooperative efforts**
- **Prioritize work on the ground**



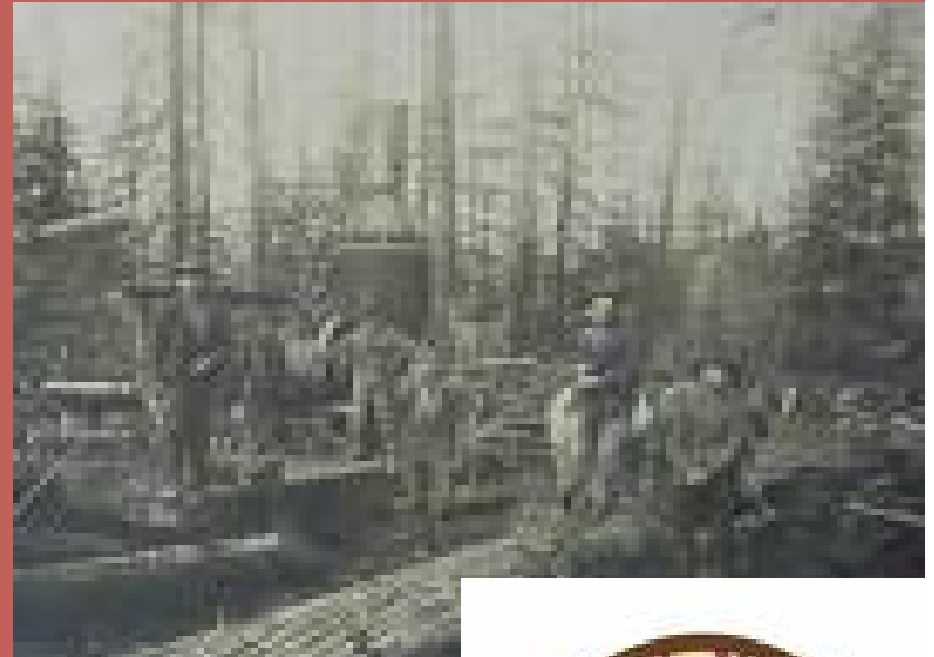
American Chestnut

 A family stands in front of a huge chestnut tree. The forests certainly looked different prior to the arrival of the chestnut blight.




Factors Which Affected Current Forest Conditions

- Exploitive logging
- Fire Suppression
- Loss of Chestnut
- Selective Logging
- Land Development
- Loss of Hemlocks



Objective of July 26 meeting

 **To identify restoration priorities for the Nantahala and Pisgah National Forests that partners, managers and scientists consider important and support.**



A restoration priority ...

- **Addresses a critical ecosystem restoration need.**
- **Holds high potential for impact (where our actions can make a big difference).**
- **Supported by FS and Partners.**
- **Has large-scale application.**

Priorities Identified

- **Restoration of Streams and Watersheds**
- **Restoration of Rare Native Communities (including hemlock)**



Priorities Identified

■ Restoration of Fire-Adapted Ecosystems

■ Restoration of Diversity in Low-Diversity Forest Stands



Priorities Identified

■ Restoration of Wildlife
Habitat Diversity

■ Recovery of
Threatened and
Endangered Species

■ Control of Invasive
Species



Desired Outcomes

- **Discuss approaches for addressing the priorities we have identified.**
- **Share information on specific partnership activities/opportunities for leveraging resources.**
- **Explore topics where there is not full agreement and identify avenues for further dialogue.**