

# Forest\*A\*Syst: Educating Forest Landowners on Forest Uses and Water Quality

Tina W. Pagan, University of Georgia  
David Mercker, University of Tennessee

2003 Southern Region Water  
Quality Conference  
Ruidoso, New Mexico  
October 19-22, 2003





# Where are We in Educating the Private Landowner?

- Programs traditionally have educated landowners on timber and wildlife management.
- Few programs have addressed water quality on private forestlands.



## Why?

Landowners may think:

- Water quality does not provide financial incentives,
- It is the responsibility of loggers, and/or
- Resources are not available to educate them.



# Why are Forestry Specialists Addressing Water Quality?

- Educational materials on water quality are important because:
  - Most forestland in the Southeast belongs to private landowners.
    - 79% in Tennessee
    - 72% in Georgia
  - The number of forest landowners is growing; however, many of these landowners have less than 100 acres.
    - 87% in Tennessee





# What New Materials Exist to Teach Landowners About Water Quality?

- **Forest\*A\*Syst** (*“A\*Syst” concept*)
  - Guides
  - Regional Interactive CD-ROM



Forest\*A\*Syst **self-assessments** help landowners:

- Manage their forest for timber,
- Improve recreation opportunities,
- Enhance the visual appearance of their forest,
- Sustain and promote wildlife populations, and/or
- Enjoy the natural resources,  
***while protecting water quality in adjoining streams and rivers.***



# How do the Forest\*A\*Syst Materials Work?

- The guide and interactive CD-ROM provides landowners:
  - A questionnaire to determine their primary objective.
  - Information on proper management techniques necessary to obtain their management goals.
  - An assessment to evaluate their current management practices and be offered suggestions for improvement.
  - A list of resources and other publications.



***The role of forests in stabilizing soils and protecting a watershed has been universally recognized and incorporated into these materials.***

# Why the Forest\*A\*Syst Interactive CD-ROM?

- An interactive CD:
  - Provides a “self-tutorial” program that accesses more landowners using a computer.
  - Reduces the amount of time state resource professionals work with their clientele.
    - CD allows landowner to be prepared before a visit with a state forester.
    - Few state foresters exist because of budget constraints.
  - Select information based on their knowledge of a particular management technique.







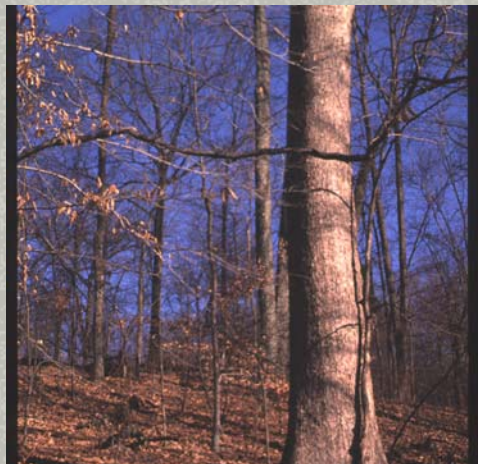
# What Resources were Available to Develop Forest\*A\*Syst?

- Partners

State Forestry agencies, Soil and Water Conservation Commissions, Cooperative Extension Service, and NRCS



- Resources



Financed through grants from North Carolina State Extension Forestry (RREA) and various state forestry funds, such as the Georgia Forest Stewardship Program