

Cry of the Wild

FIFTEEN YEARS



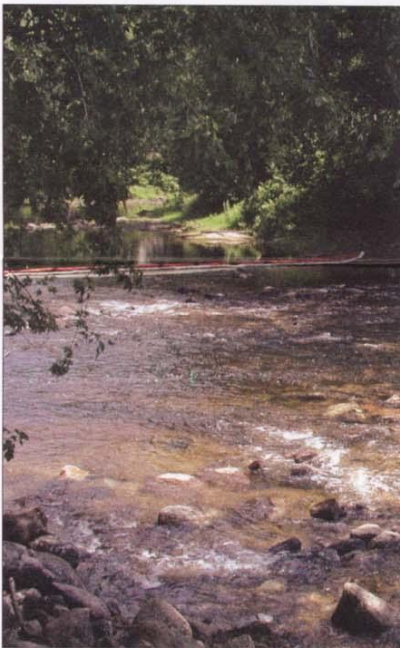
Winter 2003, Volume 52

Newsletter of Wildlife Forever

Dam Removal Returns Historic Spawning Sites

A diminutive structure by human standards but an impassable obstacle to many fish, the Winchester Dam on the Ashelot River in New Hampshire was removed to restore 15 miles of free flowing river.

The dam removal was made possible with the support of Wildlife Forever and FishAmerica. It was part of a larger effort to remove several dams and bring back thousands of



The free flowing water opens spawning grounds for shad, herring and salmon.



The 100 year old timbers are pulled to the side and then removed.

American shad, blueback herring and Atlantic salmon.

The Ashelot is one of New Hampshire's major tributary streams to the Connecticut River.

The 3-foot high, 105-foot long timber crib dam was built in 1900 to provide water storage for the New England Box Company. Having long since out lived its usefulness,

local residents viewed the dam as a hazard to anglers and an impediment to a healthy fishery.

With the dam's removal, a variety of fish will be able to reach their historic spawning grounds that hadn't been available for more than 100 years. Fishing is getting better in New Hampshire thanks, in part, to the support of Wildlife Forever members.



From The Field

Working For Wildlife . . . forever

Rodney Spotts is a busy man. He always has been. After 25 years in the army and then several years with Honeywell, you don't slow down just because you've retired. And you don't give up the things that have been important to you all your life.

Despite his many interests and activities, Rodney still manages to work an hour a month for wildlife

conservation. Every month without fail. An hour a month doesn't sound like a lot. But life is so busy. How many of us could be sure to contribute an hour every month to wildlife? If we found the time, where would we go and what would we do? Rodney took a creative approach to those questions. Recognizing he didn't have the time to get out into the field to do the conservation work himself, Rodney began donating an hour of wages each month to Wildlife Forever (Using the wage he had

prior to retirement). It's automatically deducted from his account each month.

It was a creative and unique way to work an hour a month and give something back to wildlife.

It's inspiring and it encouraged Wildlife Forever to develop a program for others who want to work an hour a month for wildlife conservation, but like Rodney, don't have the time to go out into the field, find a project and do it.

If you'd like to contribute an hour of your time each month (Or even just half an hour) to wildlife conservation, visit the Wildlife forever web site at www.wildlife forever.org or call 763-253-0222. There you can have an amount you determine deducted from your account each month. You can even have your contributions targeted to specific species such as waterfowl, trout or upland birds.

To participate in the Working for Wildlife . . . forever program, sign up in the membership area or in the donations area within any species category. Select whatever monthly amount you want.

All those who contribute through this monthly giving program will not receive additional requests in the mail, but will still receive the Wildlife Forever calendar and address labels each year plus your membership card.

It's a great way to know for a fact that you are doing more than most to give something back to wildlife.

Yours for wildlife . . . forever,

Doug
Douglas H. Grann
President & CEO

Upland Habitat Created

The Yellow Bank Wildlife Management Area lies within Breckenridge County, Kentucky along the Ohio River. Of its 6,000 acres, 2,000 acres are managed for upland game.

When an additional 1,000 acres was added to the WMA, the intention was that this land would be converted and added to the upland habitat. There were three obstacles. The land had been an agricultural pasture dominated by fescue, a very poor wildlife supporting grass. Further, the land had been enrolled in the Conservation Reserve Program (CRP). CRP is a federally subsidized farm program to remove highly erodible land from row crop production. For agriculture and wildlife, it is a great program. But now that the land was part of the WMA, the CRP contract restricted the number of acres per year that could be converted to upland habitat.

There was little anyone could do about the CRP contract. But working with the local chapter of Quail Unlimited, Wildlife Forever was able to help solve the fescue problem by solving the third obstacle . . . funding.

To account for CRP, a small portion of the new land would be converted each year from fescue to upland bird supporting warm season grasses. Wildlife Forever's challenge grant provided the support needed to implement controlled burns, apply herbicide and plant grass seed using a no-till drill.

When the CRP contract expires, plans call for a complete conversion of all 1,000 acres. Until that happens, a little more upland habitat will be added each year. And Kentucky hunters will have a little more public land to walk during the quail and turkey seasons. 96-1021

Welcome Life Members

Each of these exceptional conservationists has made a special contribution to The Forever Fund, Wildlife Forever's endowment in which only the interest is spent. The result is a conservation gift which will go on forever. Thank you. If you would like details on becoming a Life Member, contact us at (763) 253-0222.

Howard Barnes
J.M. Bentine
John G. Geiger
Steve Hough
Bill R. Moesch
Ann Ovitt

Conservation Update: 1997 Support Still Generating Trout

In 1989, the Yough Area Fisherman's Association made a big decision. They would build a nursery to raise brook, brown and rainbow trout for stocking the public waters around Connellsville, Pennsylvania. There were considerable investments in time and money. And a tremendous learning curve. But by 1996, the nursery was adding 10,000 trout per year to the Yough River and its tributaries.

It was a great achievement, one that the Association believed they could improve upon. Over the years, they had watched the summer heat take its toll on the young fish. Fish mortality grew during the summer because the increased temperature of the water reduced the available oxygen in the nursery's raceways.



Recent additions to the trout nursery have further increased trout production.

The Associate also realized that an automatic feeder would help their fish grow larger and healthier.

The Association's belief that they could increase trout production by 30% with a bit more investment caught their attention of Wildlife Forever. That projection, along with their many years of commitment to stocking public waters soon had a challenge grant check on its way to Pennsylvania.

With aerators and eight automatic feeders in place, the Association saw trout production increase by 50% to 15,000 per year, fish mortality was down and the fish being added to the

river were better able to survive.

The Yough Area Fisherman's Association continues its stocking efforts today and has made additional investments in their nursery to maximize the number of fish they release. New raceways have been added along with fencing and motion detectors to keep out "two-legged" predators.

This project had all characteristics of quality, long-term conservation project. The most important characteristic was a local organization with a committed membership.



These young anglers represent one of the reasons why Wildlife Forever members support conservation. We do it for them.

Wildlife Forever Duck, Bat, and Bluebird Houses

You can help wildlife and increase your watchable wildlife opportunities by placing these houses in your neighborhood or backyard. These duck, bat, and bluebird houses are easy to assemble and maintain. This is a great family project!

To order by mail, send \$35 for each wood duck box and \$20 for each bluebird or bat house ordered.



Contact:
Wildlife Forever
2700 Freeway Blvd., #1000
Brooklyn Center, MN 55430

To order by phone call:
(763) 253-0222

or on-line at:
www.wildlifeforever.org

Wildlife Forever Members Remember Loved Ones With Memorial And Honoraria Contributions

In Memory of:
 Charlie Greenleaf
 Charles Binkly
 Florence Cooper
 Willford Matilla
 Gene S. Miller
 Theodore Sirak
 James Corriea
 Waide G. Easton
 Mindy L. Grubisic
 Howard W. Hill

Received From:
 Freedom Valley Bassmasters
 Donald Morrow, WY
 Judy Taylor, CA
 Frank Challis, OR
 Leo J. Miller, MN
 Clarence W. Linsinbigler, PA
 Marilyn B. Pilliken, CA
 Elizabeth J. McCaughan, WA
 Rodney Grubisic, WI
 Ronnie Hill, TX

In Memory of:
 Wayne McVay
 Kenneth R. Minks
 George T. Seward
 James D. Weir
 Francis M. Williams

**In Honor of
 a Birthday:**
 Kristol & Jayson Belec
 Daniel D. Schell

Received From:
 Lois McVay, FL
 Matt Sardarov, WA
 Wayne Seward, NJ
 Thomas Burke, WI
 Buddy Williams, MA

Received From:
 Alvin Belec, IN
 Duane Schell, TX



Memorials And Celebratory Gifts

You can remember a loved one or special event with a gift to **The Forever Fund**, Wildlife Forever's endowment. This is a special account in which only the interest is used to support our mission. Your gift . . . your memorial . . . your special recognition will continue "forever".

Wildlife Forever will send an acknowledgement to the person or family you designate. Plus, your special gift will be acknowledged in *Cry Of The Wild*.

This gift is:

- A Memorial
- To honor an/a
 - Anniversary
 - Birthday
 - Graduation
 - Other _____

Enclosed is my gift of \$ _____ on behalf of: _____
(name of individual to be honored)

Simply complete this information

Name _____
 Address _____
 City _____ State _____ Zip _____

Wildlife Forever is a registered 501(c)3 nonprofit organization.
 Gifts are tax-deductible to the extent allowed by law.
 Return this form to: Wildlife Forever, 2700 Freeway Blvd. #1000,
 Brooklyn Center, MN 55430.

Please send an acknowledgement to:

Name _____
 Address _____
 City _____ State _____ Zip _____

NEWS-03-W

Cry of the Wild is a quarterly publication of Wildlife Forever. Douglas H. Grann, President & CEO, Editor
 Pete Wuebker, Director of Marketing • Todd Sauers, Designer • Logo photo by Lon E. Lauber
 Wildlife Forever, 2700 Freeway Blvd #1000, Brooklyn Center, MN 55430 (763) 253-0222.

Visit our web page at www.wildlifeforever.org • E-mail us at info@wildlifeforever.org