

Fresh Market Tomato Fact Sheet

<http://www.uky.edu/Ag/HortBiz/>



Production

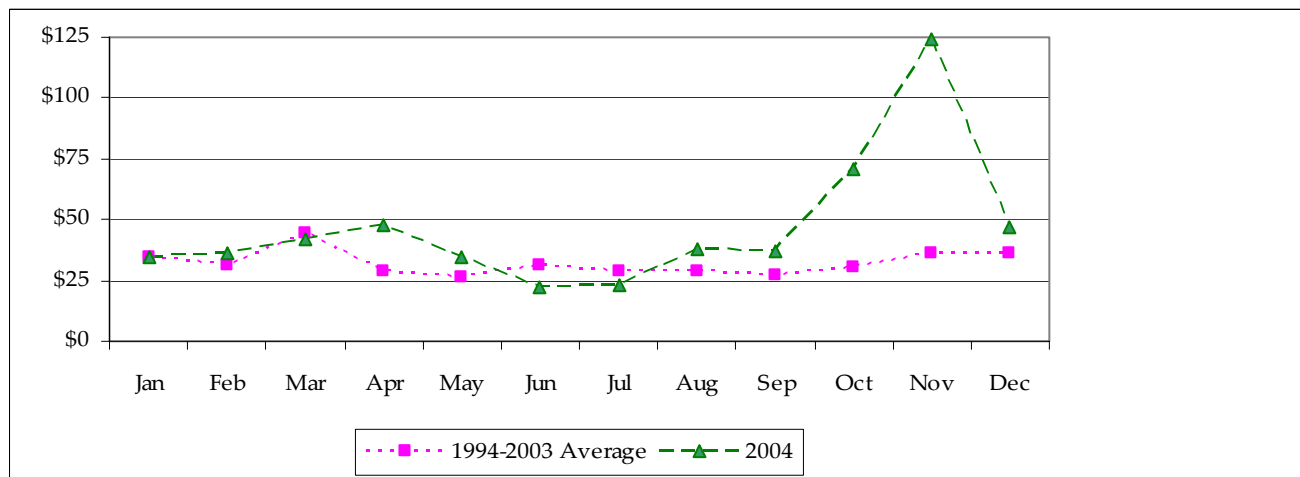
- Tomatoes remain one of the most profitable and popular crop alternatives in KY
- U.S. field-grown tomatoes face increased competition from both domestic and import hothouse varieties
- Shipping point prices for tomatoes are typically ¼ of retail prices

U.S. Fresh Market Tomato Production Data (USDA/ERS)

	1997	1998	1999	2000	2001	2002	2003
<i>Area Harvested</i>	115,190	122,590	134,750	126,290	130,840	129,020	124,300
<i>Yield Per Acre (cwt)</i>	285	268	278	308	288	307	283
<i>Production (1,000 cwt)</i>	32,777	32,906	37,409	38,890	37,701	39,588	35,147
<i>Value per Cwt</i>	31.74	35.22	25.81	30.72	30.01	31.65	36.68
<i>Total Value (\$1,000)</i>	1,040,382	1,158,935	965,586	1,194,710	1,131,421	1,252,801	1,289,298

Source: USDA/ERS

U.S. Fresh Market Tomatoes F.o.b. Shipping Point Prices (\$/cwt)



Source: USDA/ERS



Fresh tomato shipping-point prices hit highs for much of fall 2004, peaking at about four times the average price in November



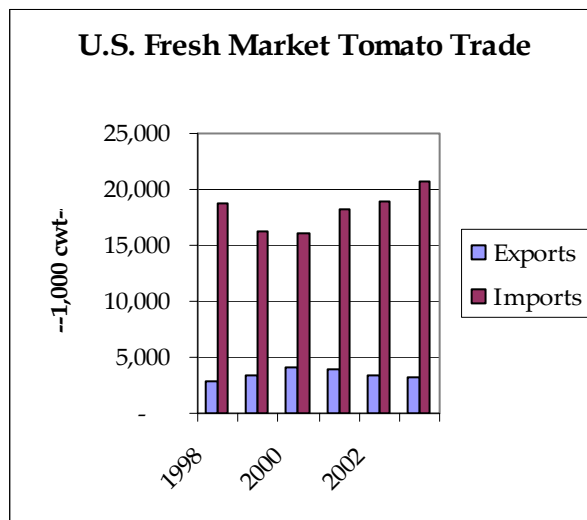
About 550 acres of tomatoes were grown in Kentucky in 2004, with a 5% increase anticipated for 2005



In a 2004 survey, grape tomatoes were one of the crops named by produce buyers in Kentucky and six surrounding states as having the greatest market growth potential in coming years

TRADE DATA

- Mexico is the largest international source for fresh market tomatoes to the U.S.
- A Census Bureau HS import code for greenhouse tomatoes was added in July 2000. Hothouse tomatoes from Canada have significantly impacted Mexico's winter market share in the US.



Source: USDA/ERS

KY Staked Fresh Tomato Breakeven Prices

	-----yield per acre-----							
25# boxes per acre	1,450	1,500	1,550	1,600	1,650	1,700	1,750	1,800
\$/box*	\$ 7.15	\$ 6.95	\$ 6.76	\$ 6.58	\$ 6.42	\$ 6.26	\$ 6.11	\$ 5.98

*Price required for \$0 to land, capital and management

Source: 2003-04 UK Vegetable Budget Updates

Information Sources

USDA/ERS Tomatoes Briefing Room

<http://www.ers.usda.gov/briefing/tomatoes/>

USDA Vegetable and Melons Report

<http://www.ers.usda.gov/publications/vgs/>

UF Marketing Information System

<http://mids.ifas.ufl.edu/>

UK Horticulture Budgets

<http://www.uky.edu/Ag/HortBiz/pubs.html>

NASS Vegetable Reports

<http://usda.mannlib.cornell.edu/reports/nassr/fruit/pvg-bban/>

Prepared by Matt Ernst (mernst(at)uky.edu) and Tim Woods (tawoods(at)uky.edu), University of Kentucky Department of Agricultural Economics, 400 Charles E. Barnhart Building, Lexington, KY, 40546-0276, Phone 859-257-7272, Fax 859-323-1913.

<http://www.uky.edu/Ag/AgEcon>

Educational programs of the Kentucky Cooperative Extension Service serve all people regardless of race, color, age, sex, religion, disability, or national origin.